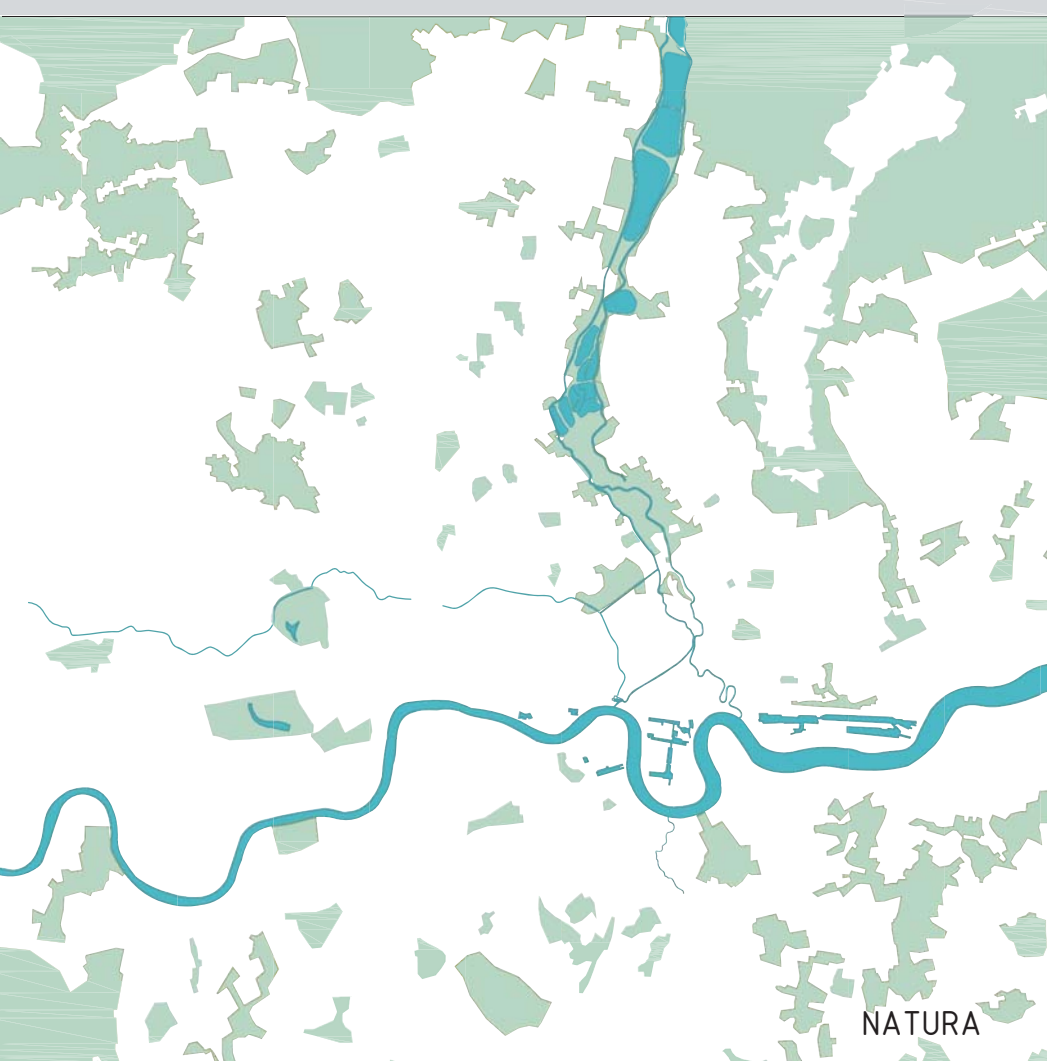




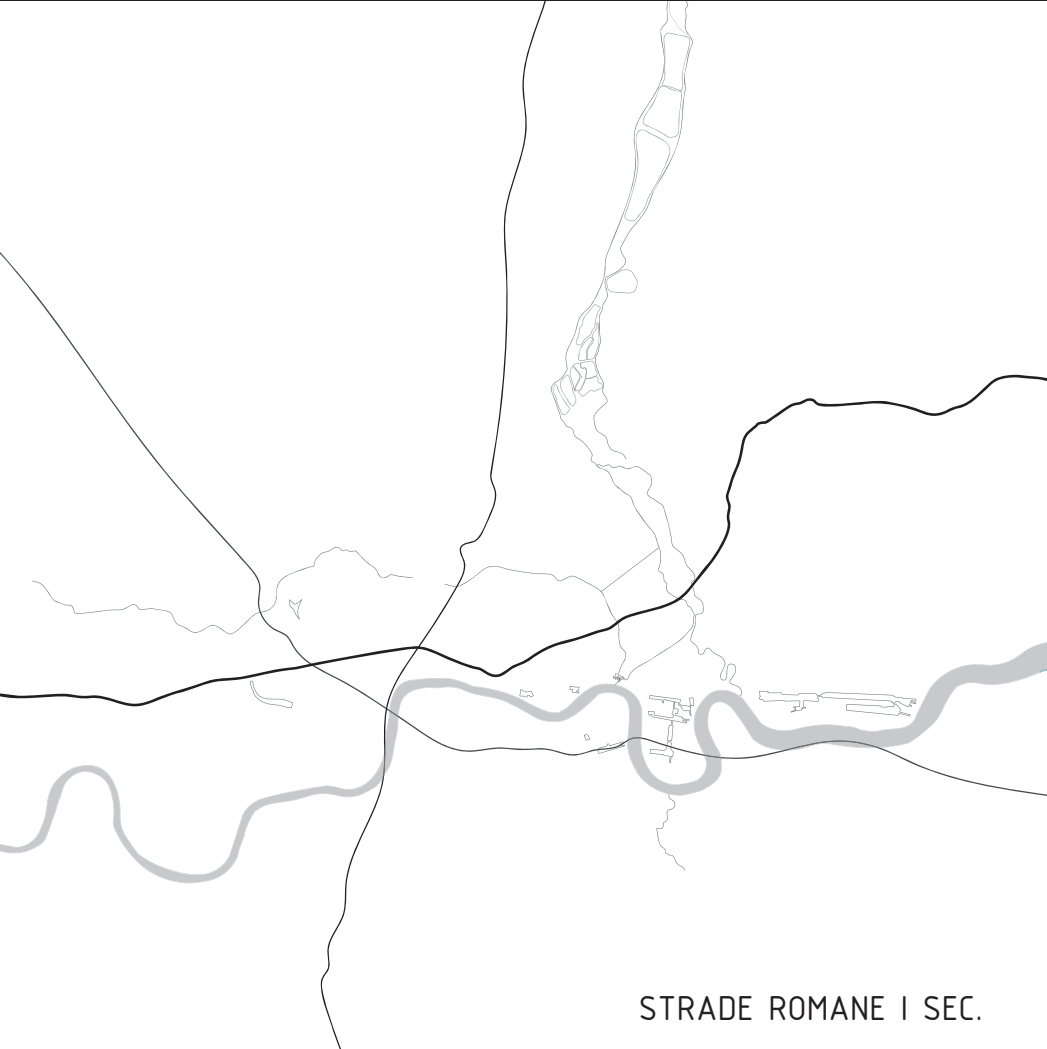
OROGRAFIA



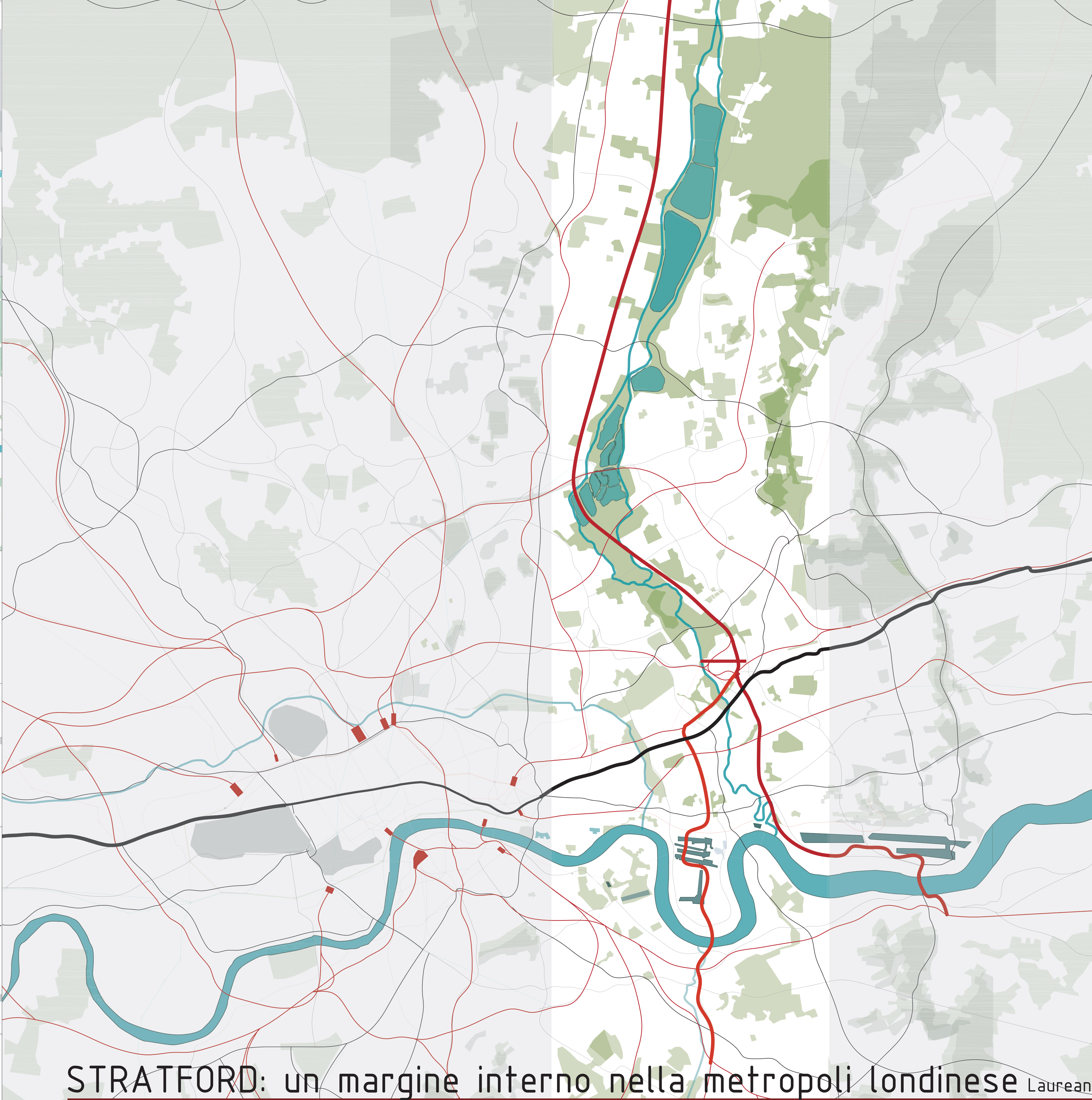
NATURA



POLI



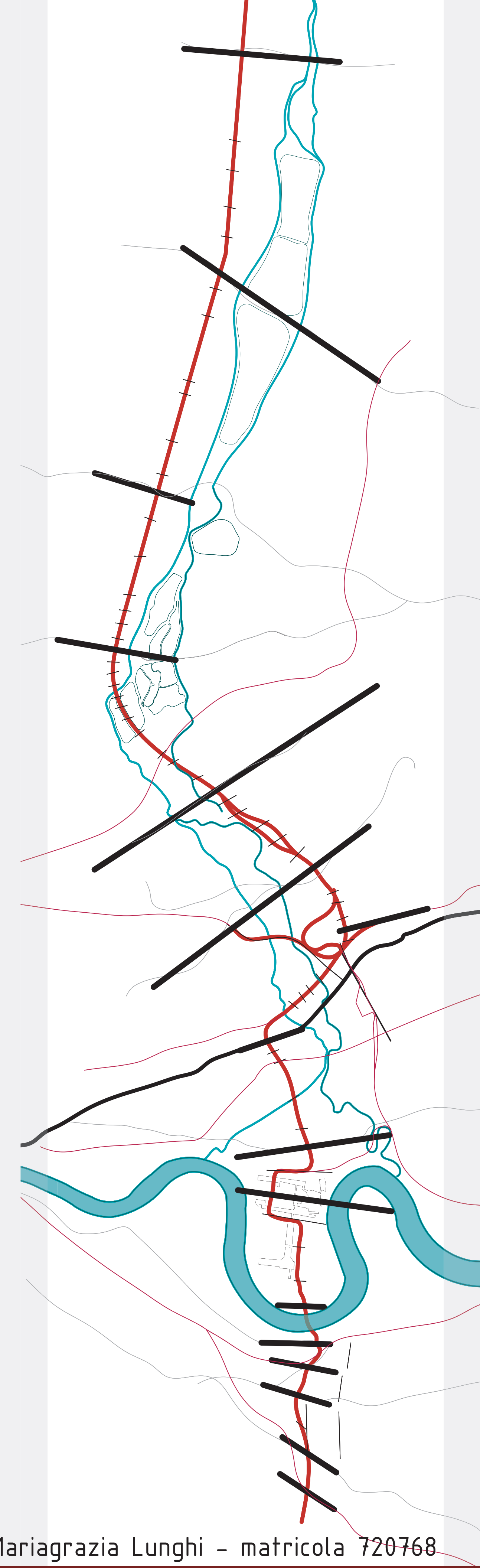
STRADE ROMANE I SEC.



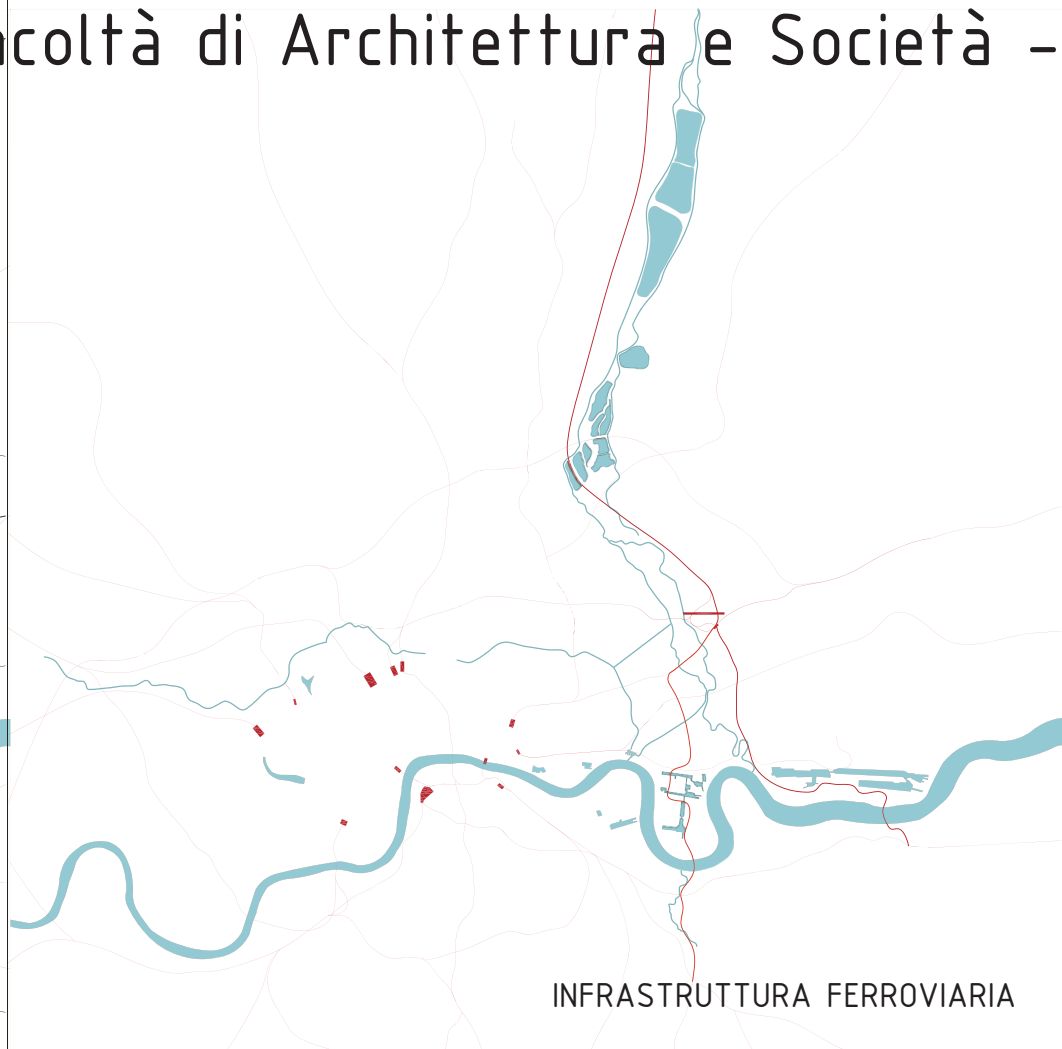
STRATFORD: un margine interno nella metropoli londinese

Laureanda Mariagrazia Lunghi - matricola 720768

Politecnico di Milano - Facoltà di Architettura e Società - Corso di Laurea Specialistica in Architettura - A.A. 2009/2010 - Relatore Prof. Ernesto D'Alfonso



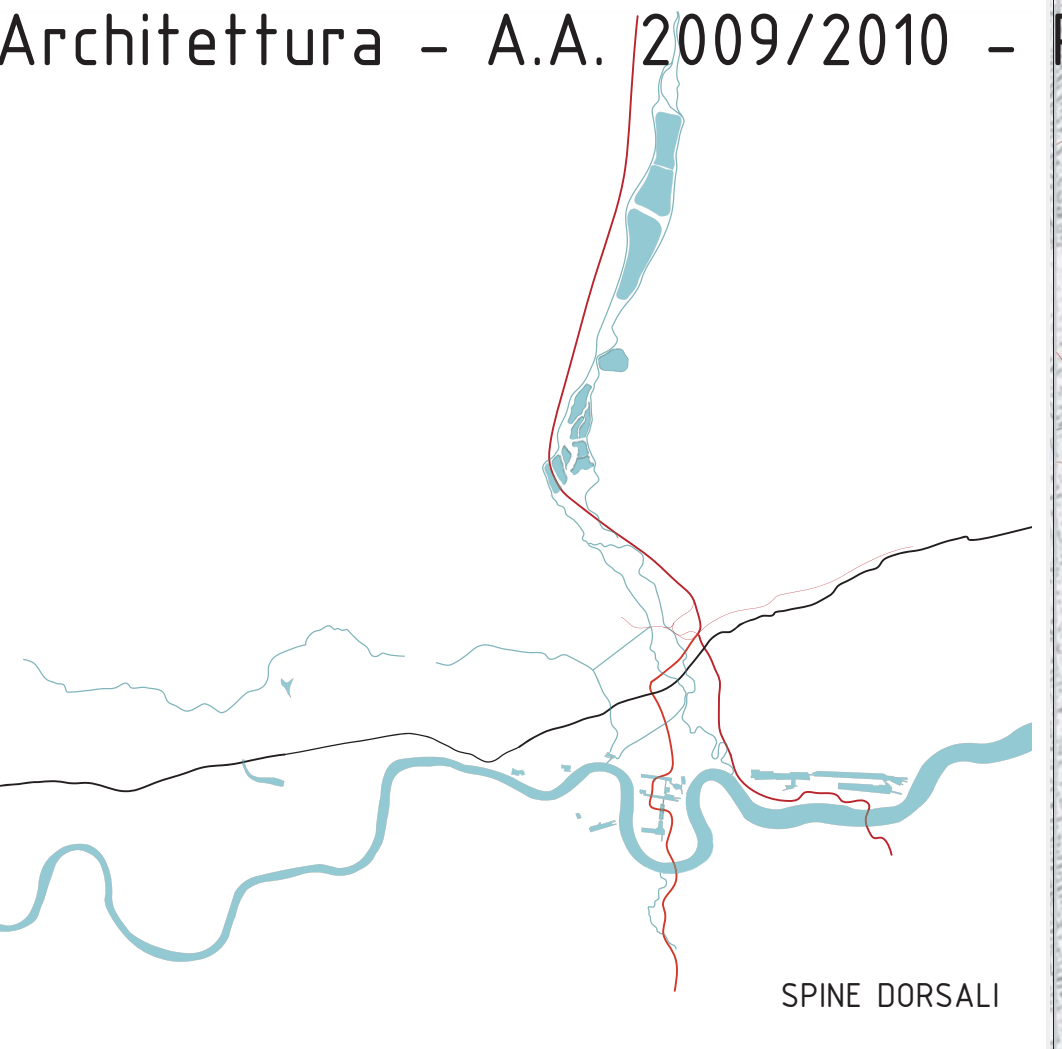
INFRASTRUTTURA STRADALE



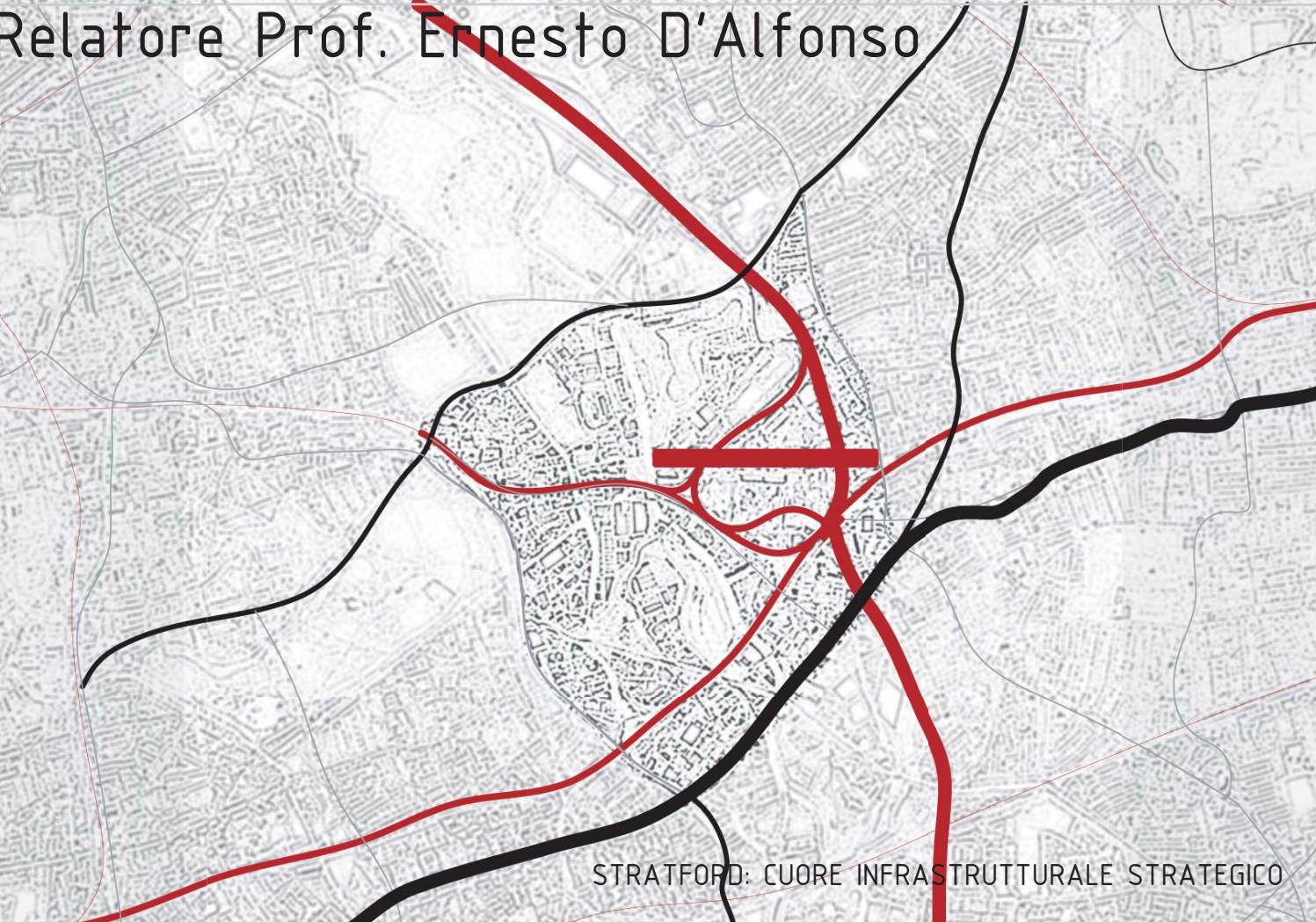
INFRASTRUTTURA FERROVIARIA



INFRASTRUTTURA SOTTERRANEA



SPINE DORSALI



STRATFORD: CUORE INFRASTRUTTURALE STRATEGICO