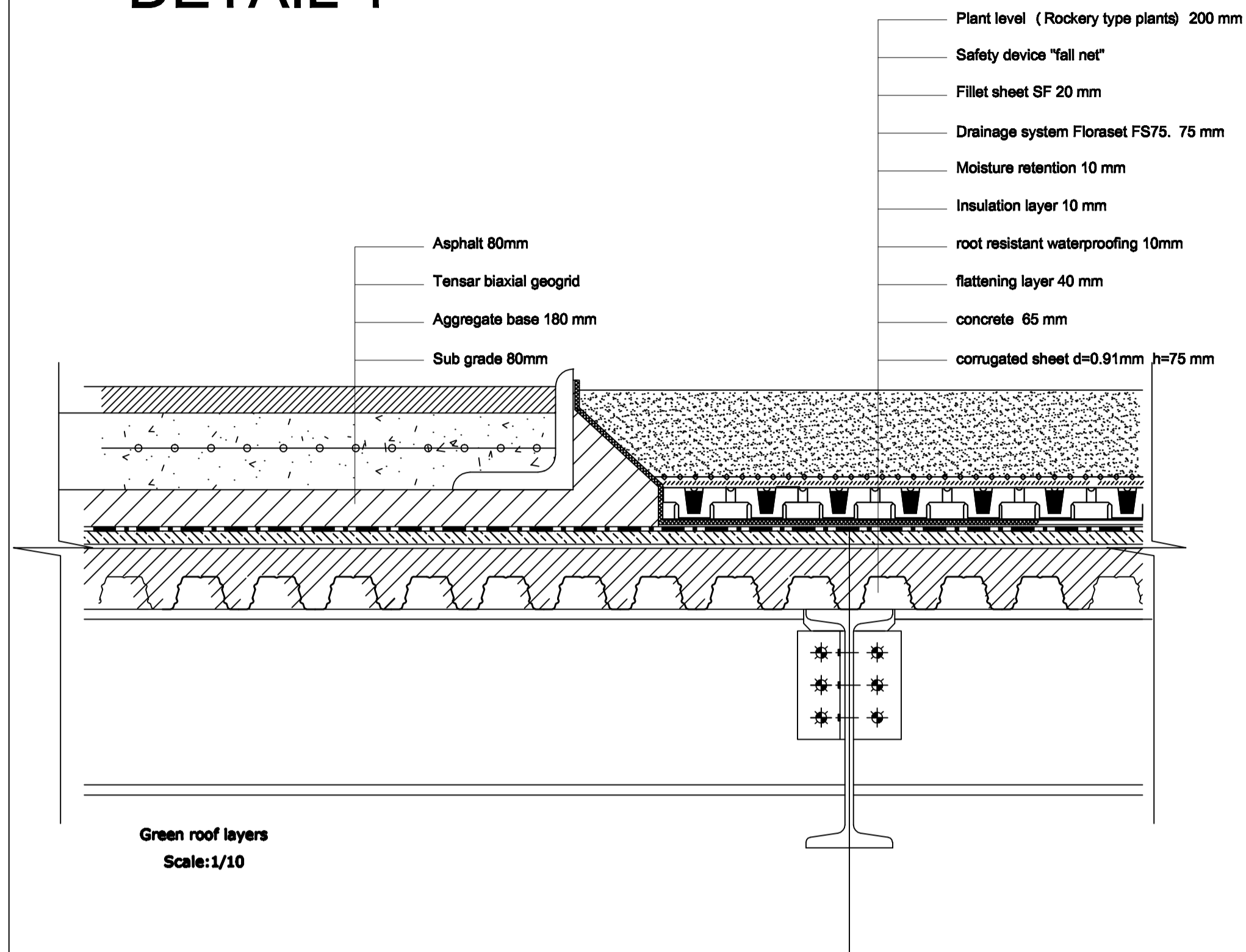
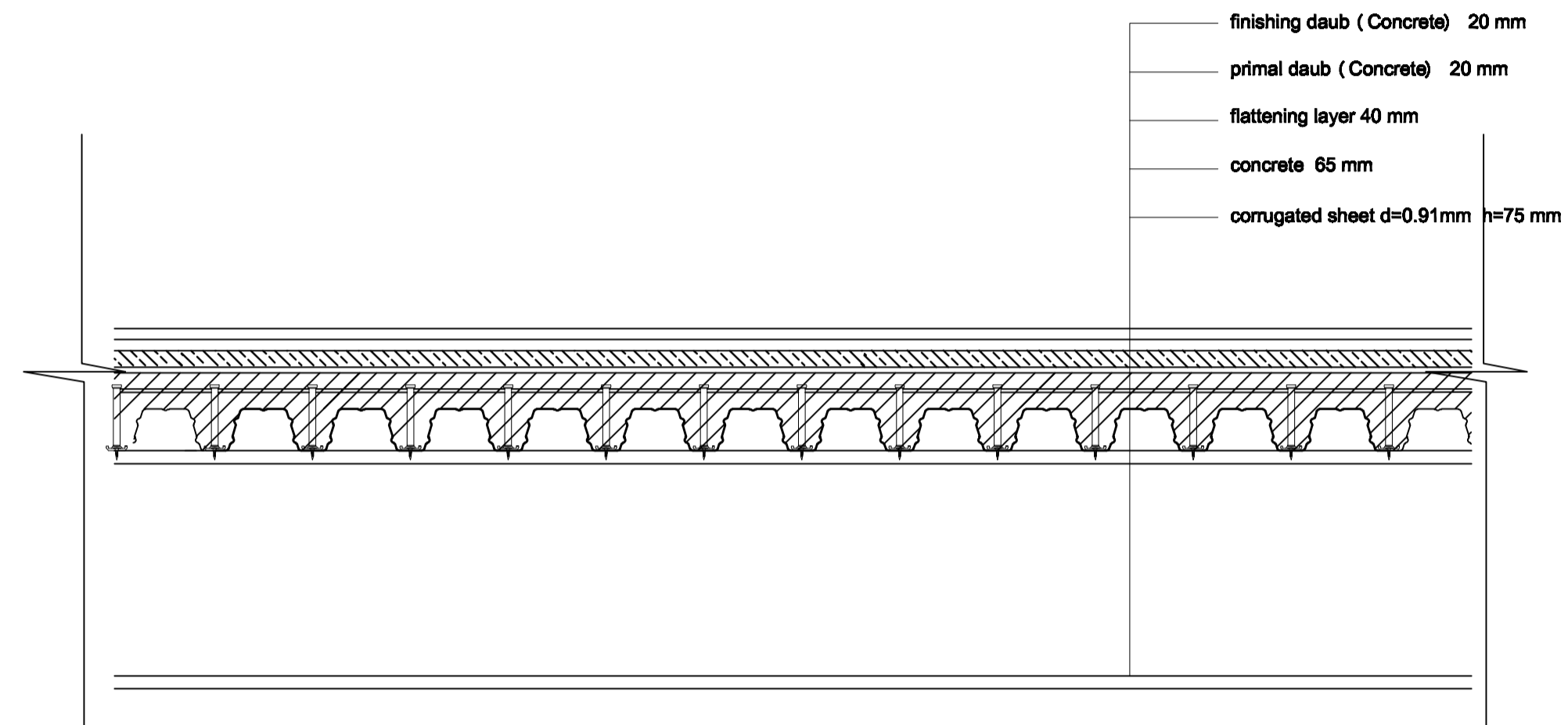


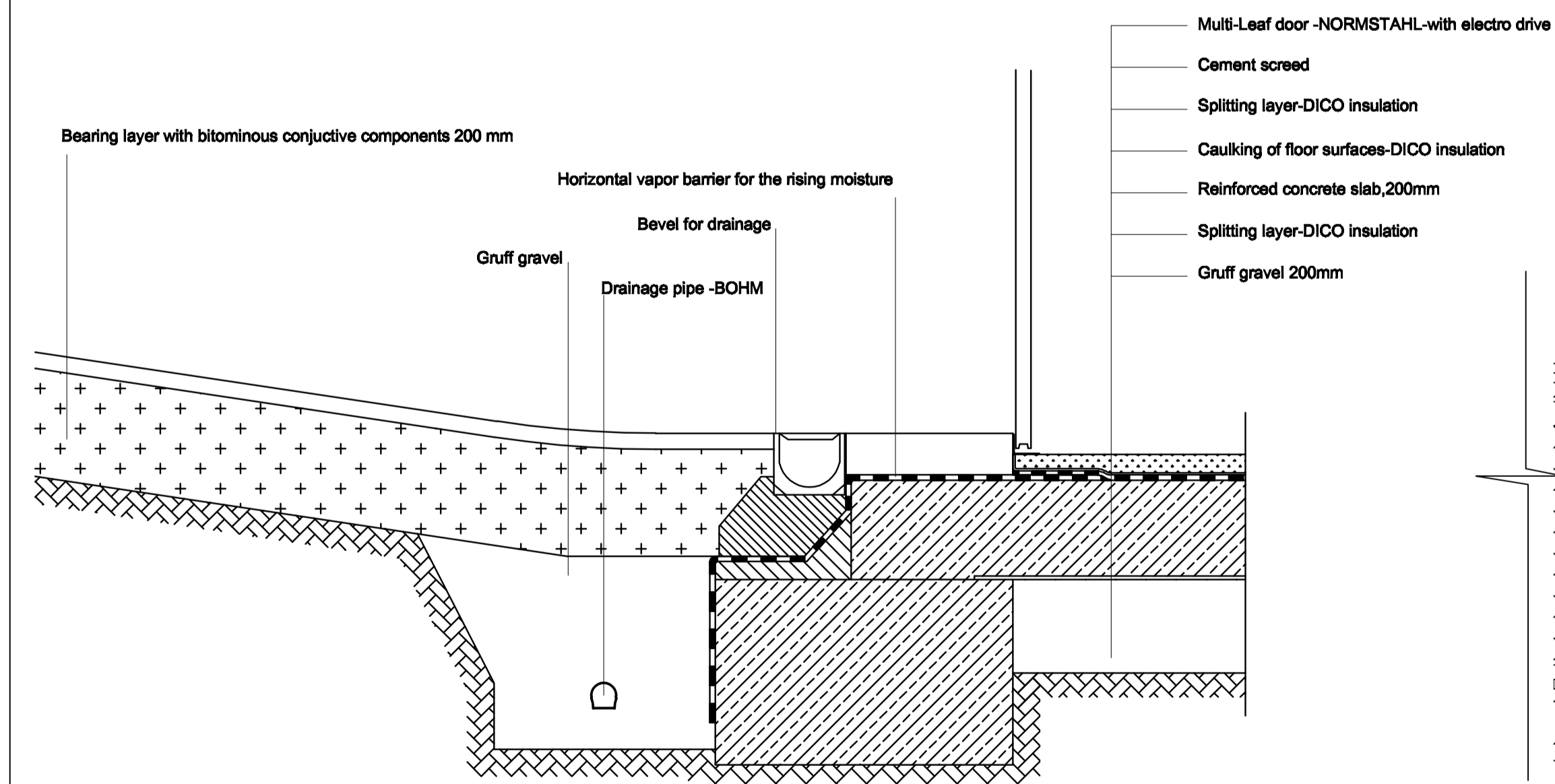
### DETAIL 1



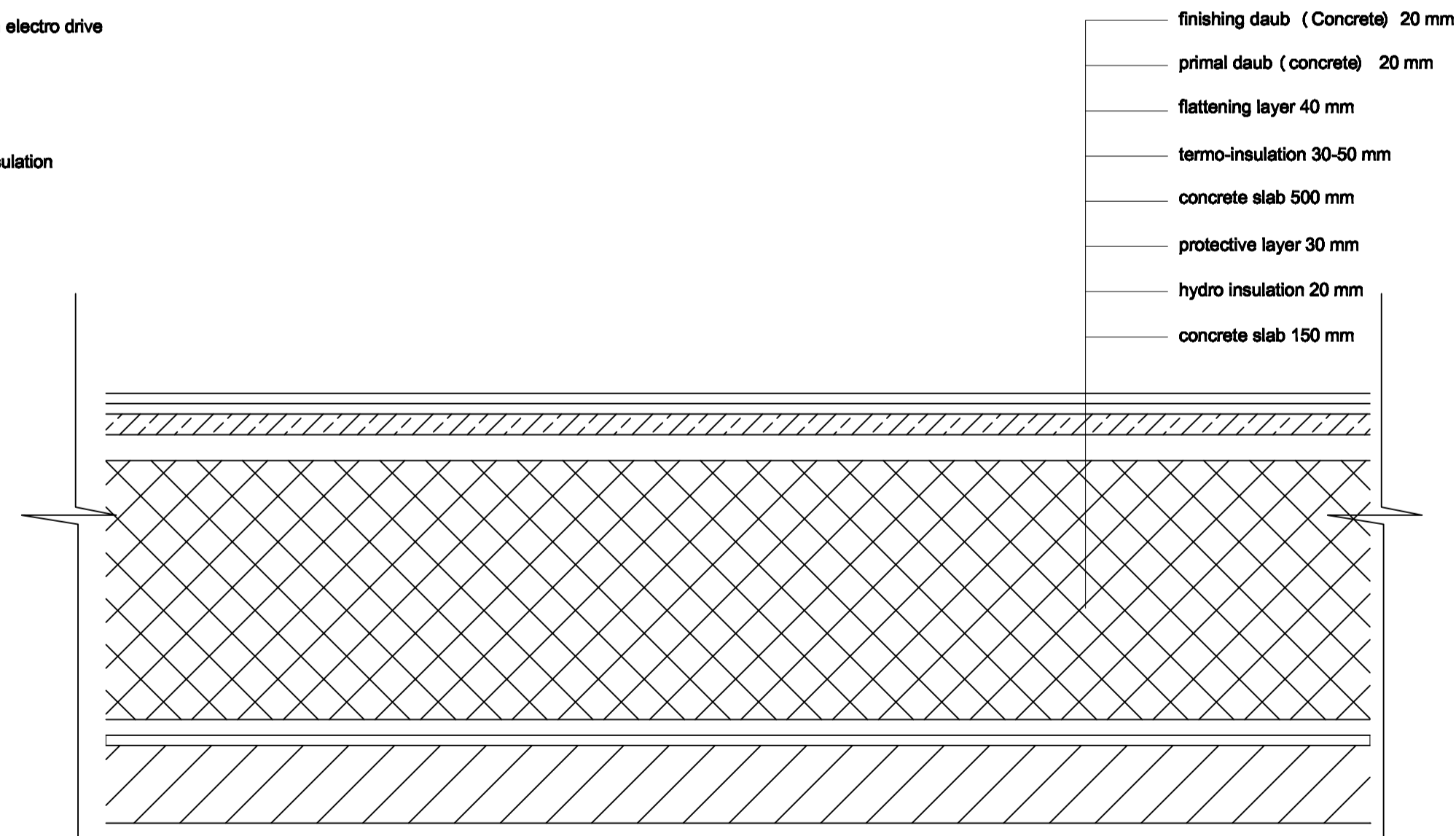
### DETAIL 2



### DETAIL 3



### DETAIL 4



Politecnico di Milano - Piacenza  
Facoltà di Architettura e Società  
Corso di Laurea specialistica in Architettura -  
Progettazione sostenibile di grandi opere

a.y. 2009/2010

supervisor: arch. prof. Alberico BARBIANO di BELGIOJOSO

**NEW MASTER PLAN FOR THE SCALO  
FARINI IN MILAN. PEDESTRIAN AND  
VEHICULAR CIRCULATION SYSTEM  
AND CAR PARKING**

UNDERGROUND PARKING - ARCHITECTURAL DETAILS

STUDENT:  
Pavlovic Boban 723543

22. July 2010.

POSTER

8

Scale 1:10