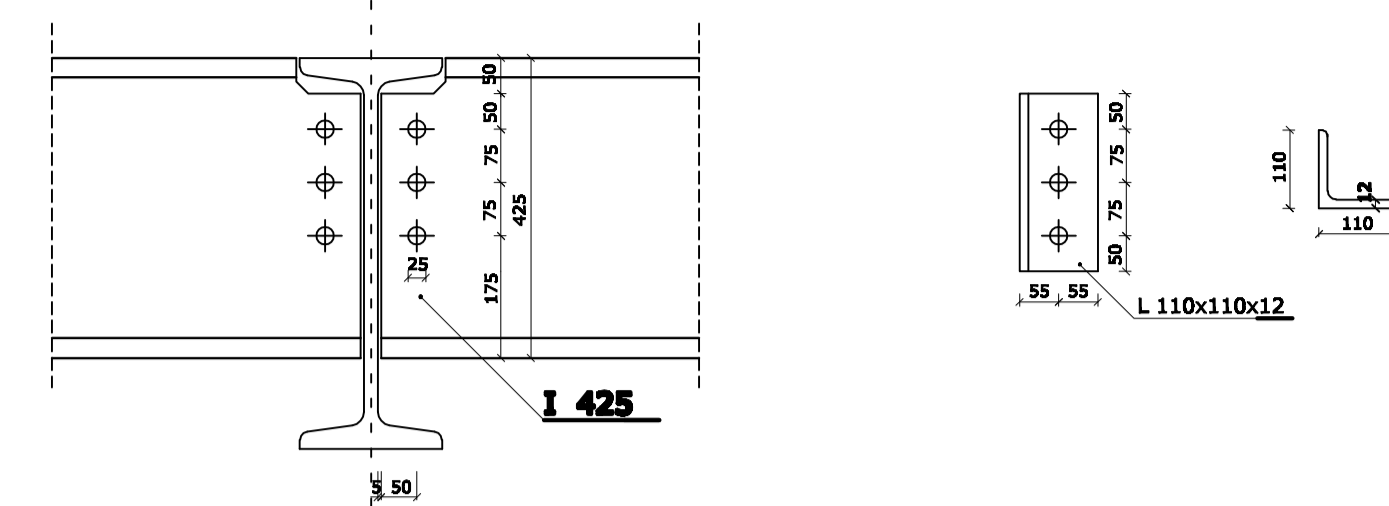


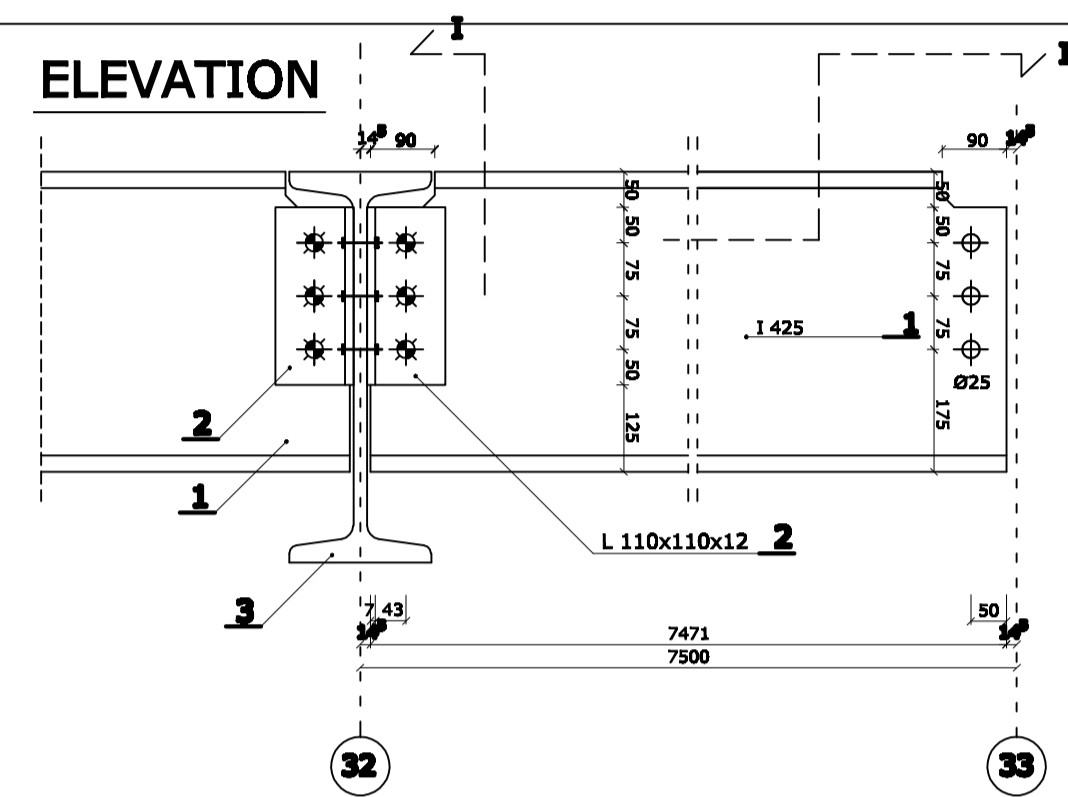
DETAIL 1: CONNECTION - PRIMARY TO SECONDARY BEAM 1:10

primary beam : IPE 550
 secondary beam : IPE 425
 steel type Fe 365
 effective length of primary beam : 7,5m
 effective length of secondary beam : 7,5m
 Bolting : bolts of type 8.8
 used type of bolts : Ø 24 with whole Ø 25

ELEMENTS

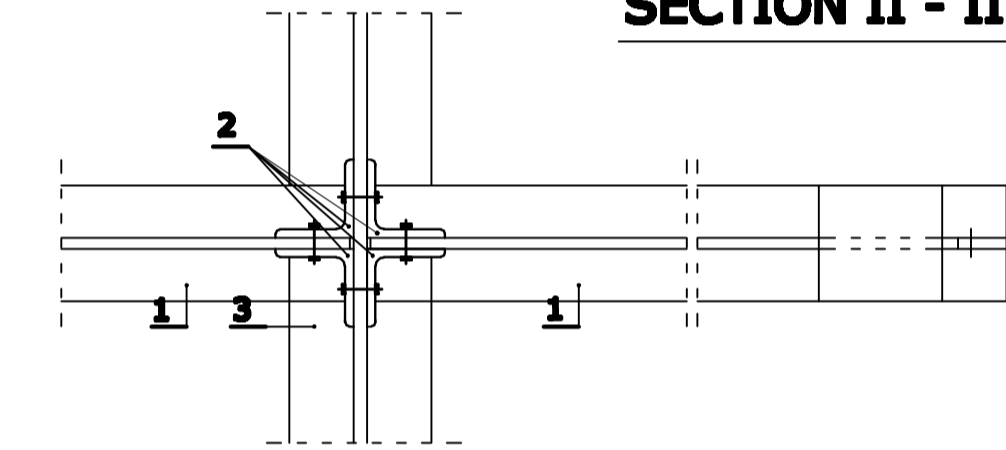


ELEVATION

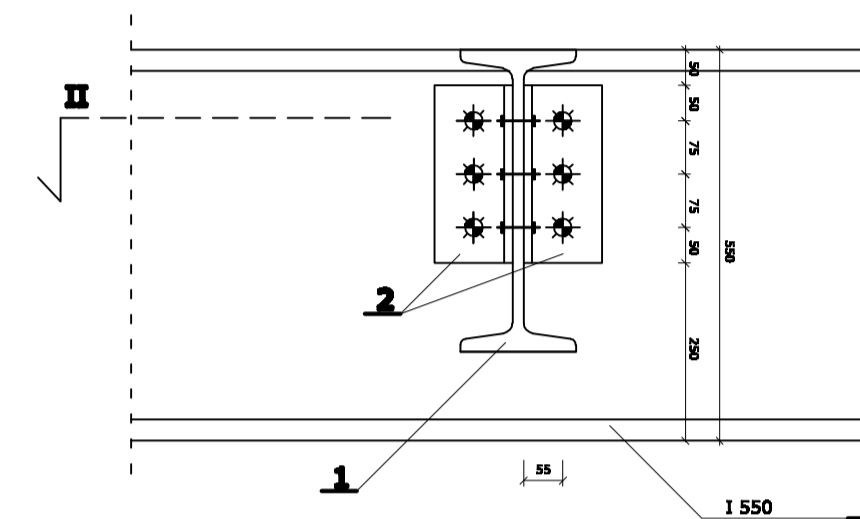


R = 1:10

SECTION II - II



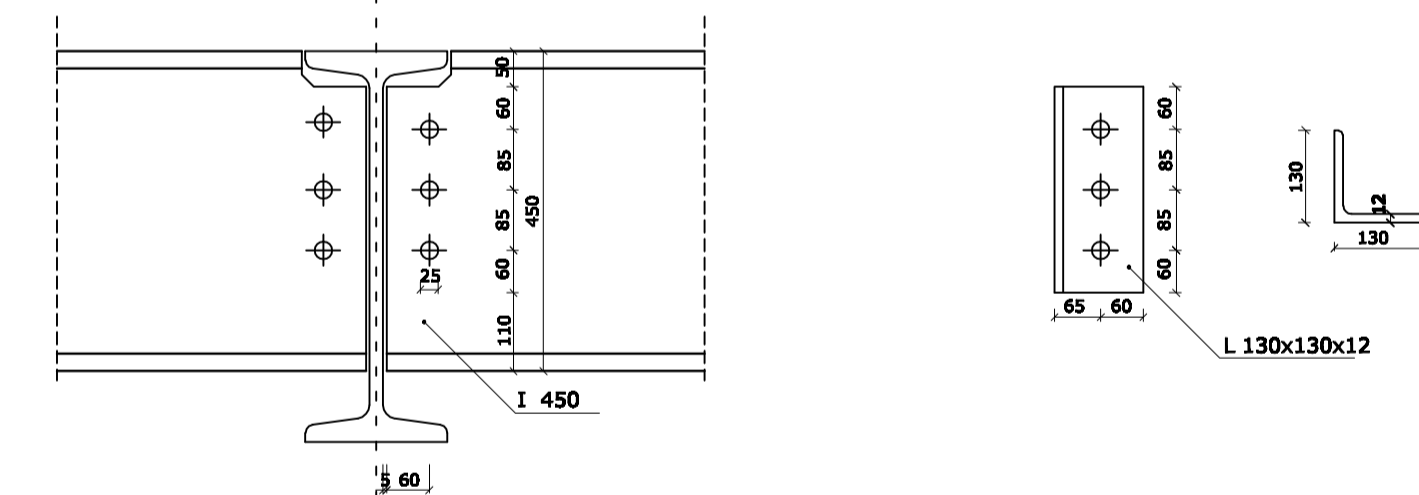
SECTION I - I



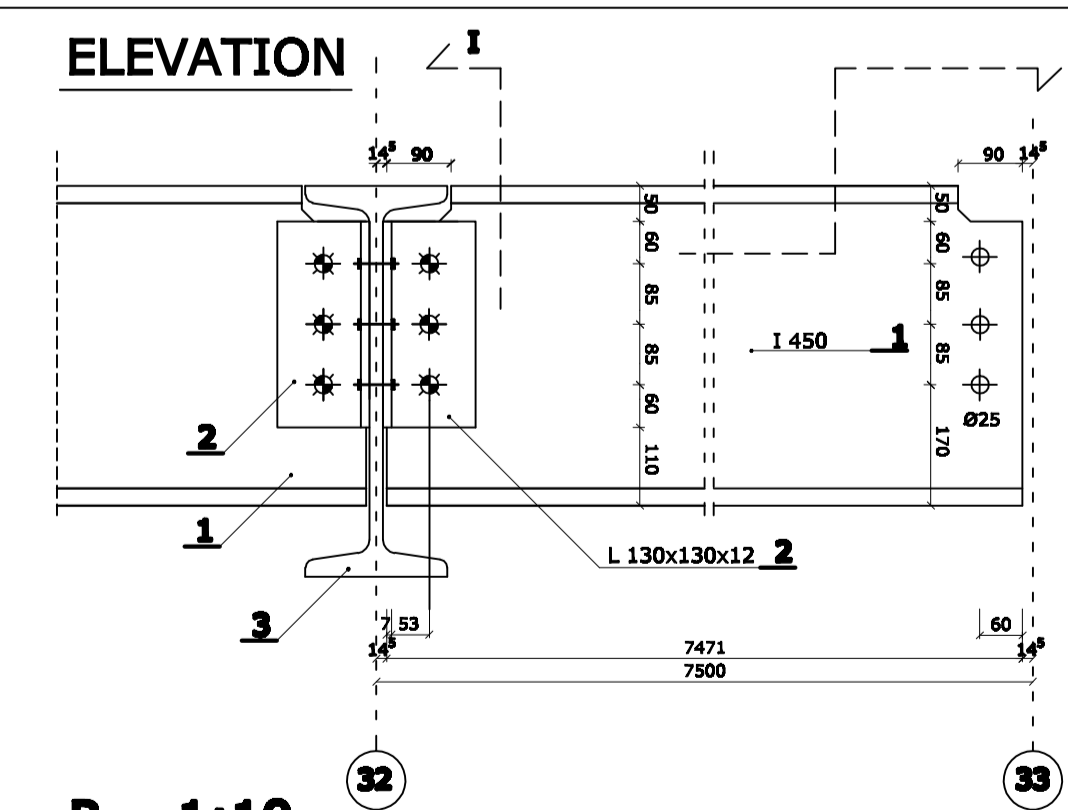
DETAIL 2: CONNECTION - PRIMARY TO SECONDARY BEAM 1:10

primary beam : IPE 550
 secondary beam : IPE 450
 steel type Fe 365
 effective length of primary beam : 7,5m
 effective length of secondary beam : 7,5m
 Bolting : bolts of type 8.8
 used type of bolts : Ø 24 with whole Ø 25

ELEMENTS

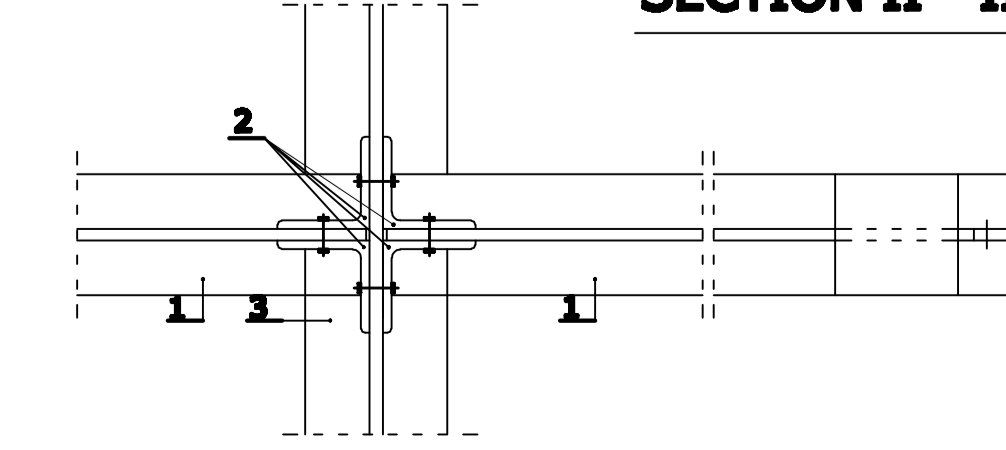


ELEVATION

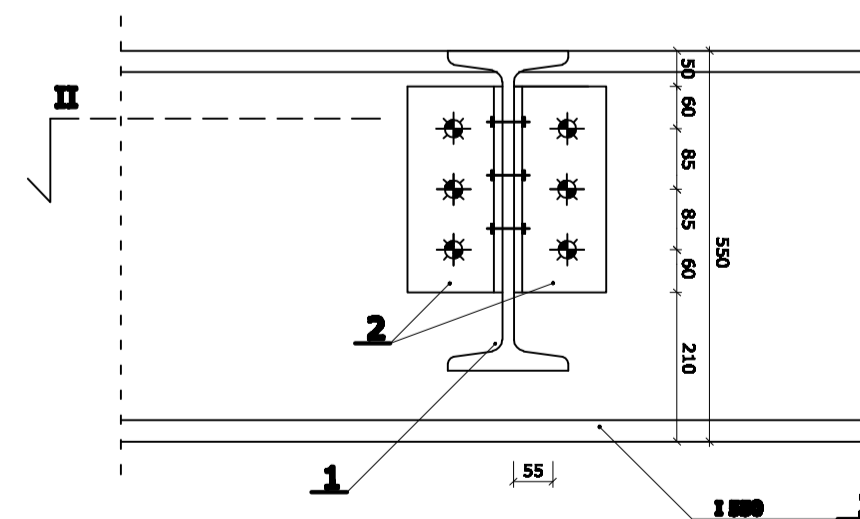


R = 1:10

SECTION II - II



SECTION I - I



Politecnico di Milano - Piacenza
 Facoltà di Architettura e Società
 Corso di Laurea specialistica in Architettura -
 Progettazione sostenibile di grandi opere

a.y. 2009/2010

supervisor: arch. prof. Alberico BARBIANO di BELGIOJOSO

**NEW MASTER PLAN FOR THE SCALO
 FARINI IN MILAN. PEDESTRIAN AND
 VEHICULAR CIRCULATION SYSTEM
 AND CAR PARKING**

UNDERGROUND PARKING - STRUCTURAL DETAILS

STUDENT:
 Pavlovic Boban 723543

22. July 2010.

POSTER
12
 Scale 1:10