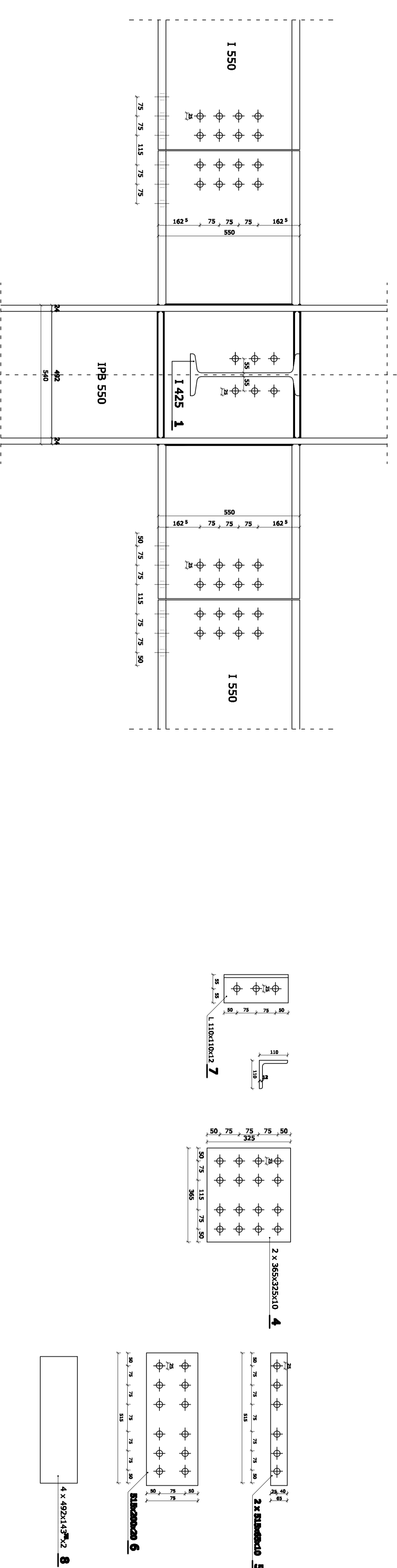


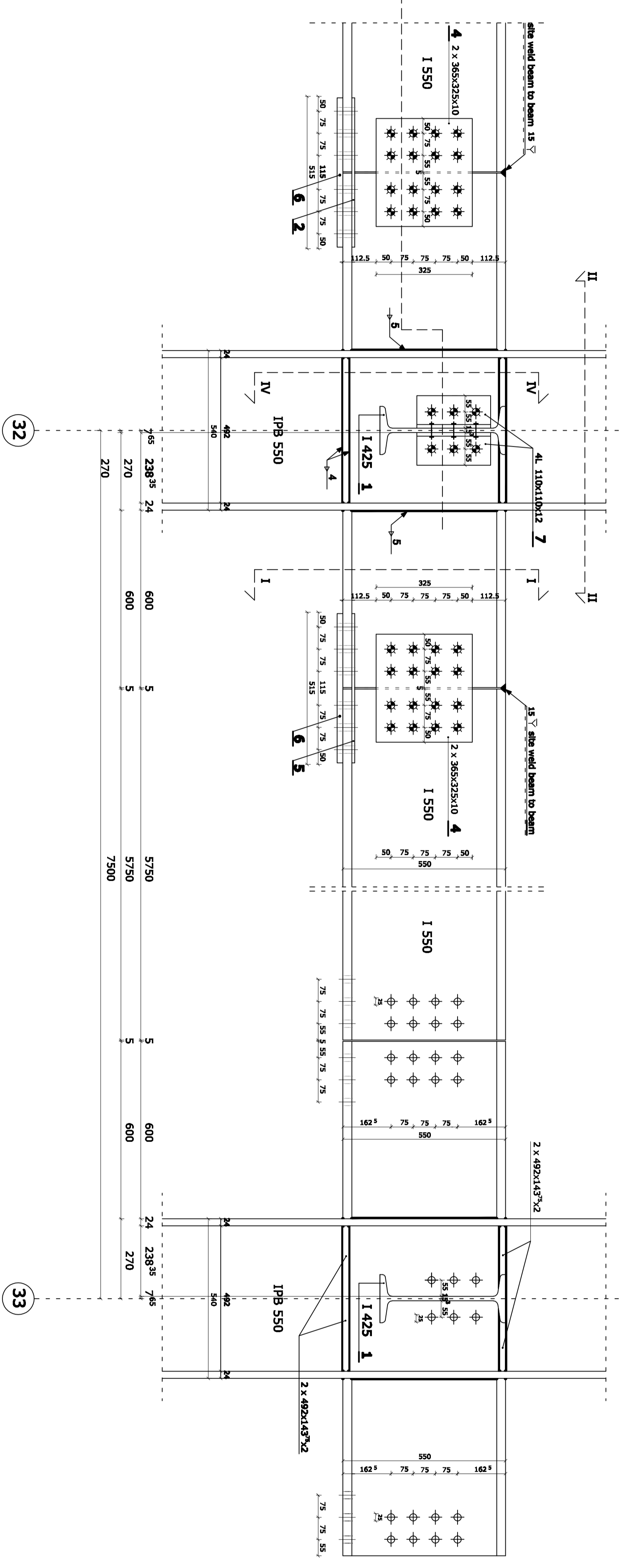
DETAIL 3: CONNECTION - PREFABRICATED ELEMENT 1 TO PRIMARY BEAM 1:10  
 DETAIL 4: CONNECTION - SECONDARY BEAM TO COLUMN 1:10

element 1 : column with previously welded parts (60cm) of primary beam  
 column : IPB 550  
 primary beam : IPE 550  
 secondary beam : IPE 425  
 steel type Fe 365  
 effective length of column : 13,6m  
 effective length of primary beam : 5,75m  
 effective length of secondary beam : 7,5m  
 Bolting : bolts of type 8.8  
 used type of bolts : Ø 24 with whole Ø 25

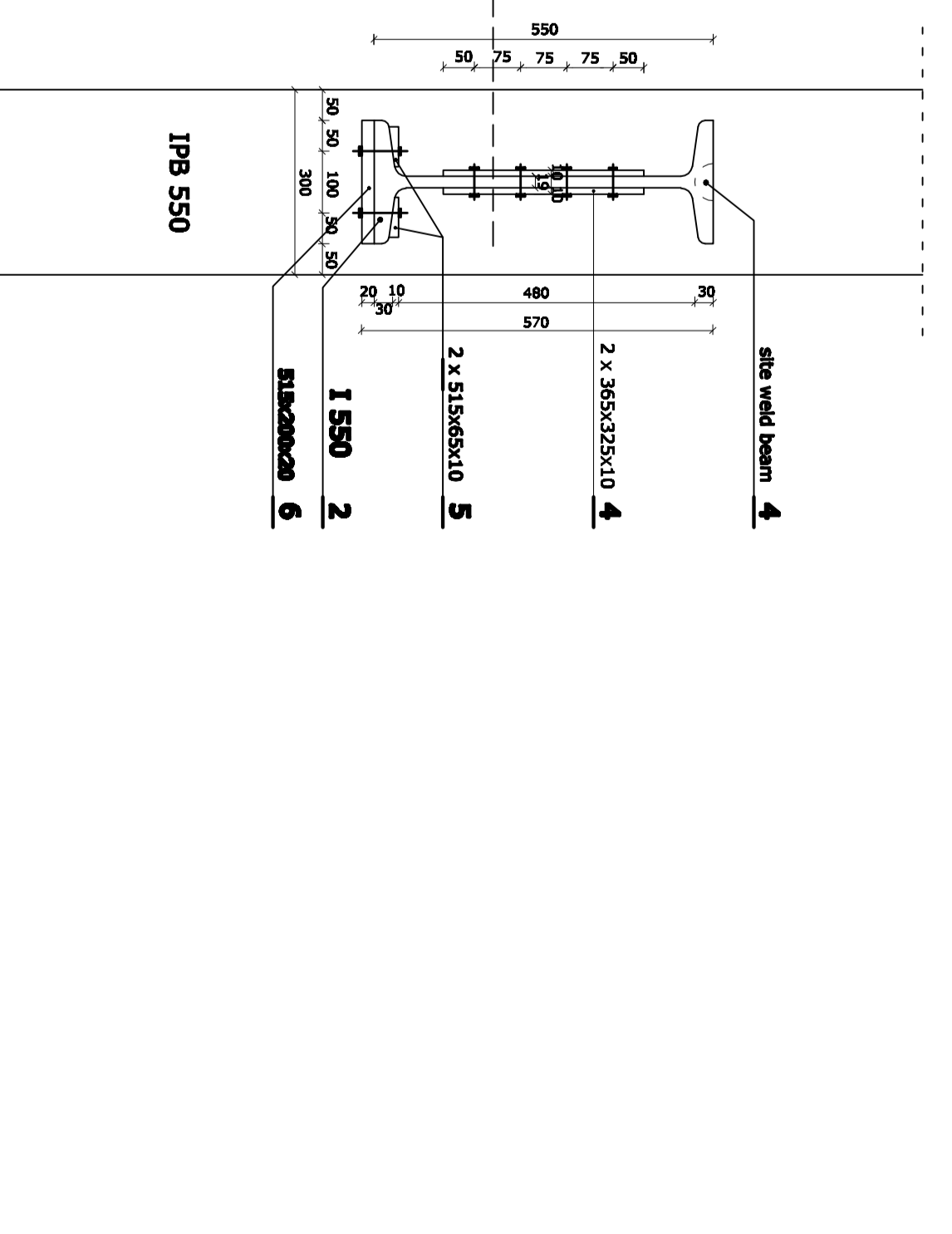
ELEMENTS



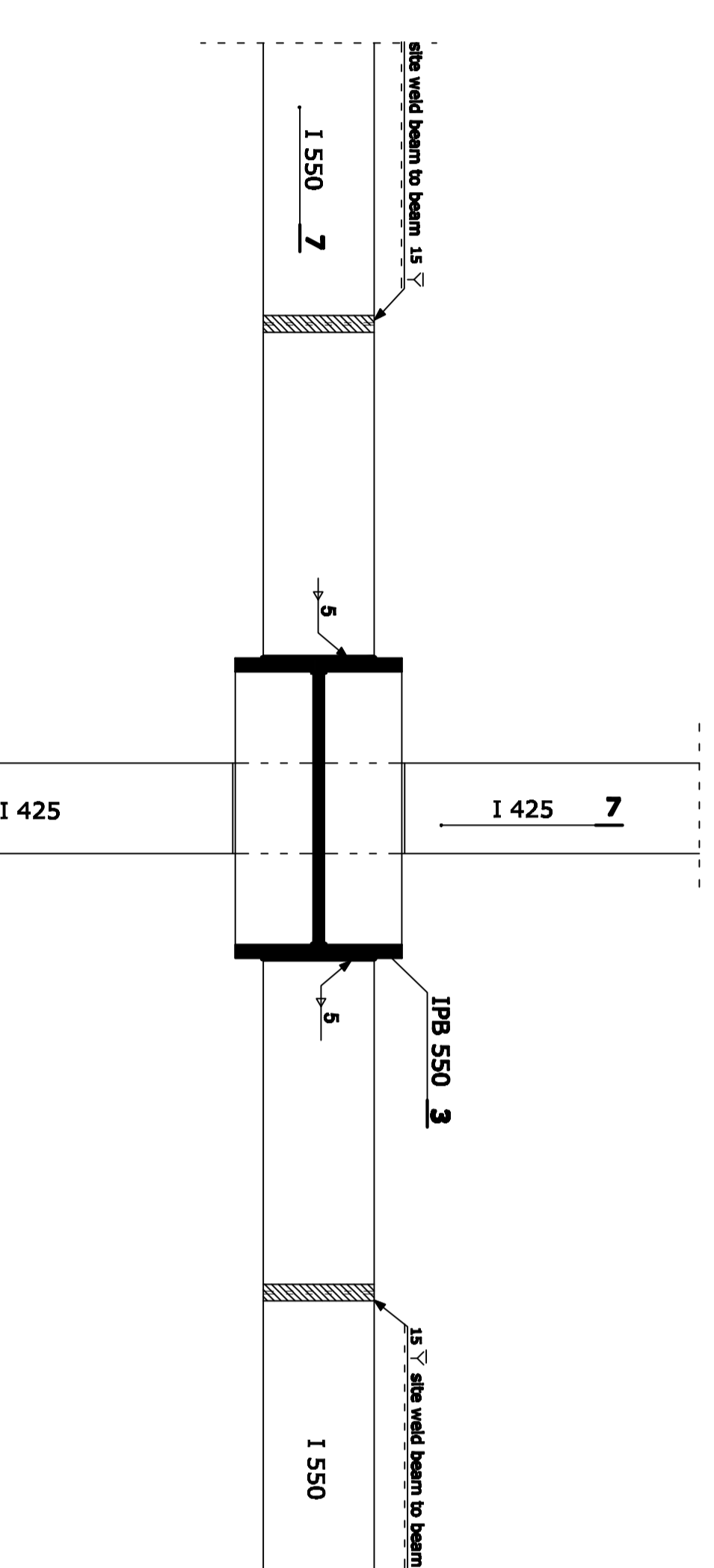
ELEVATION



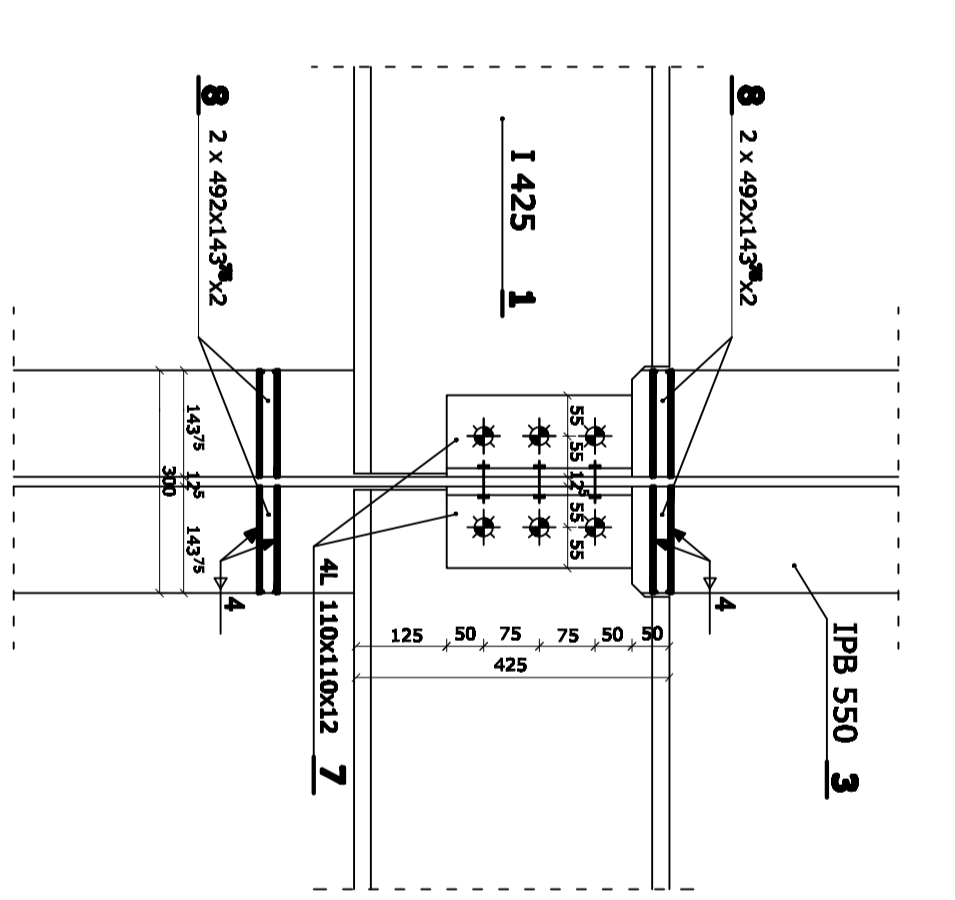
SECTION I - I



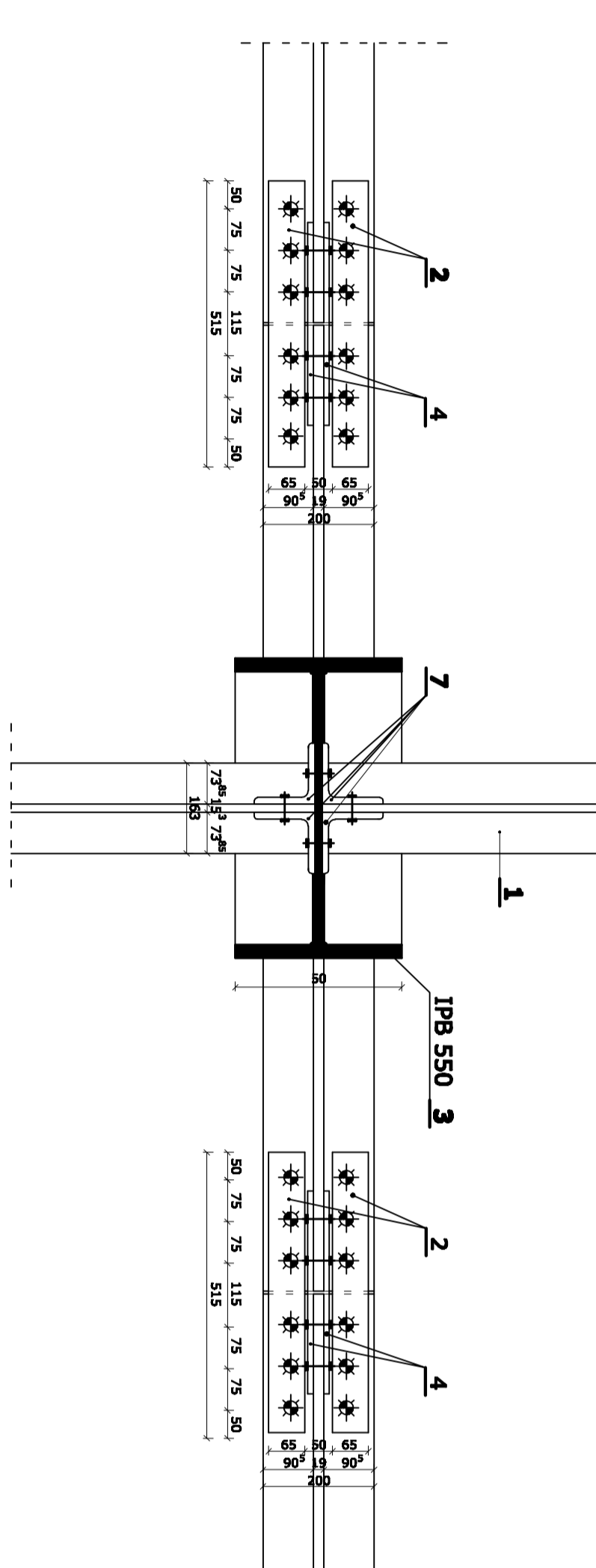
SECTION II - II



SECTION IV - IV



SECTION III - III



**Politecnico di Milano - Piacenza**  
 Facoltà di Architettura e Società  
 Corso di Laurea specialistica in Architettura -  
 Progettazione sostenibile di grandi opere

a.y. 2009/2010

supervisor: arch. prof. Alberto BARBIANO di BELGIOIOSO

**NEW MASTER PLAN FOR THE SCALO FARINI IN MILAN. PEDESTRIAN AND VEHICULAR CIRCULATION SYSTEM AND CAR PARKING**

**UNDERGROUND PARKING- STRUCTURAL DETAILS**

STUDENT:  
 Pavlovic Boban 723543

22. July 2010.

POSTER  
**13**  
 Scale 1:10