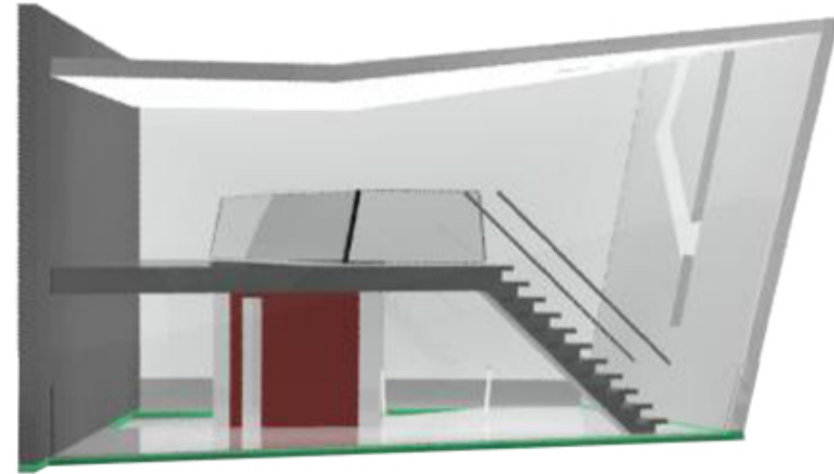
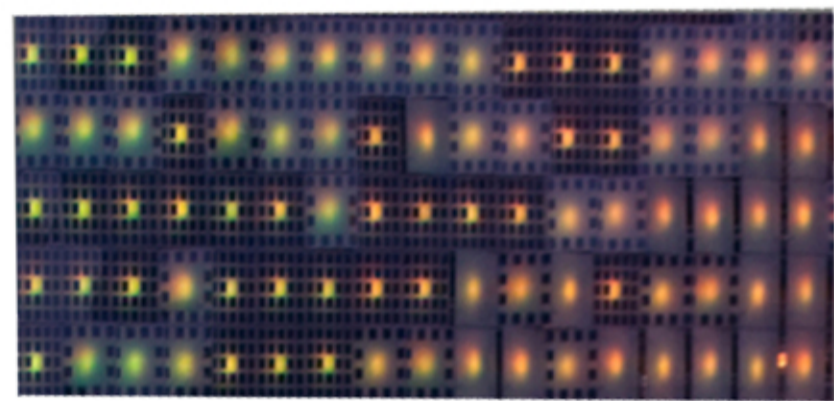


NORTH FACADE

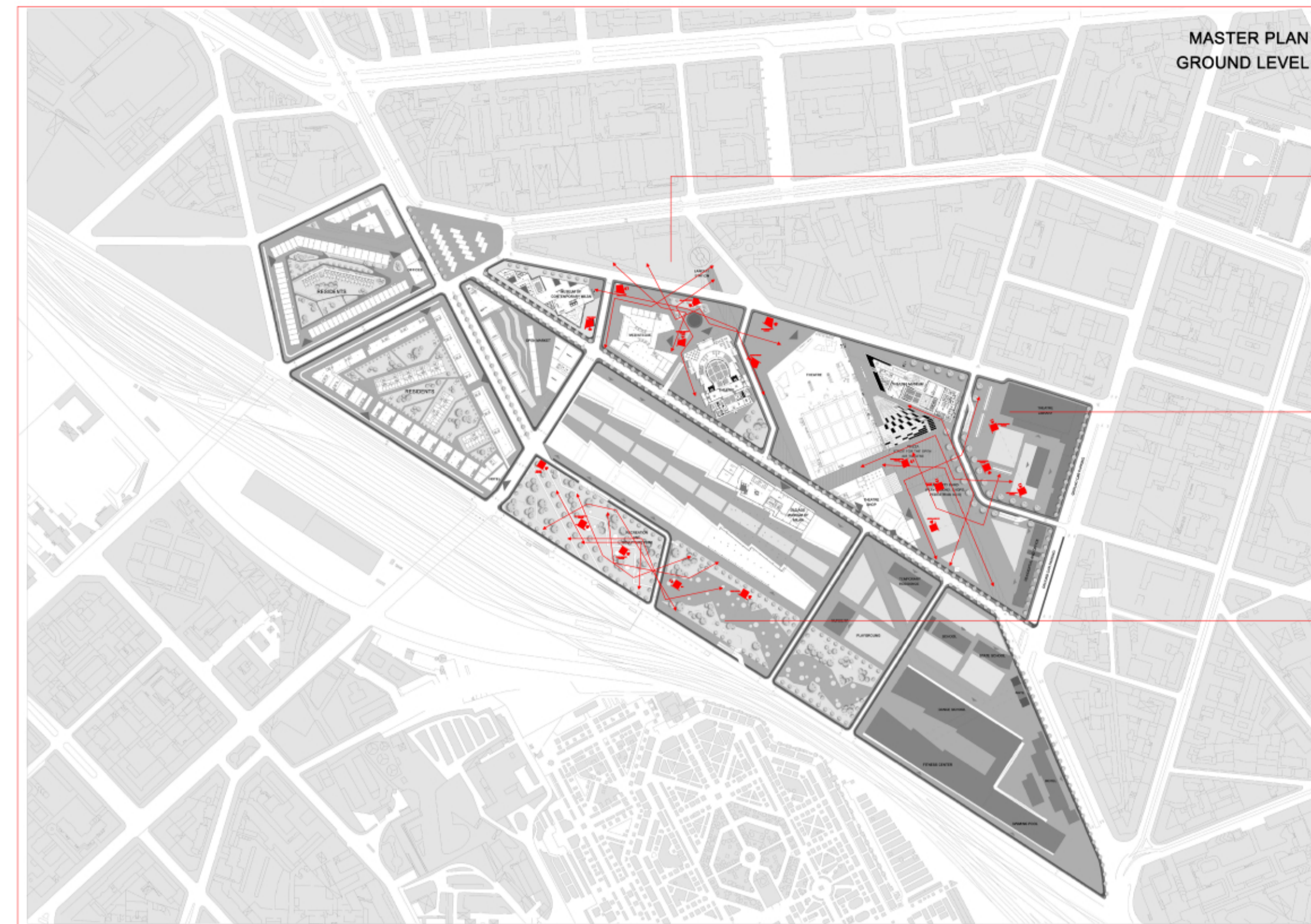
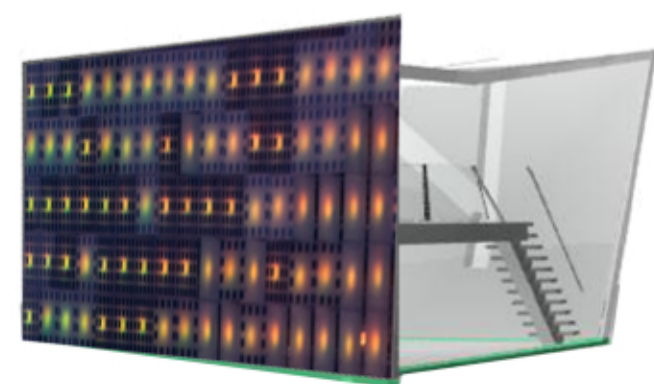
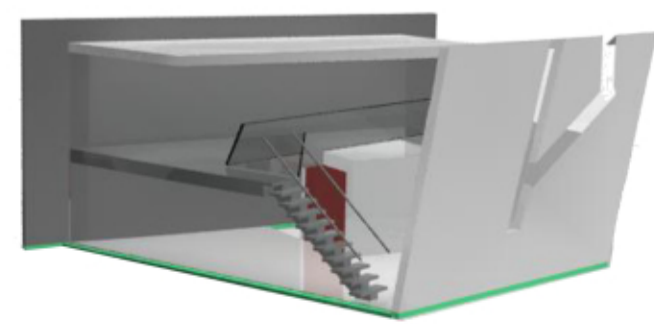
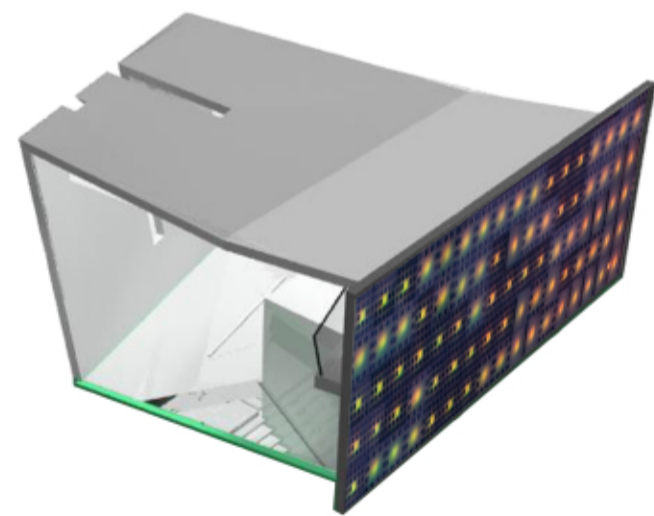
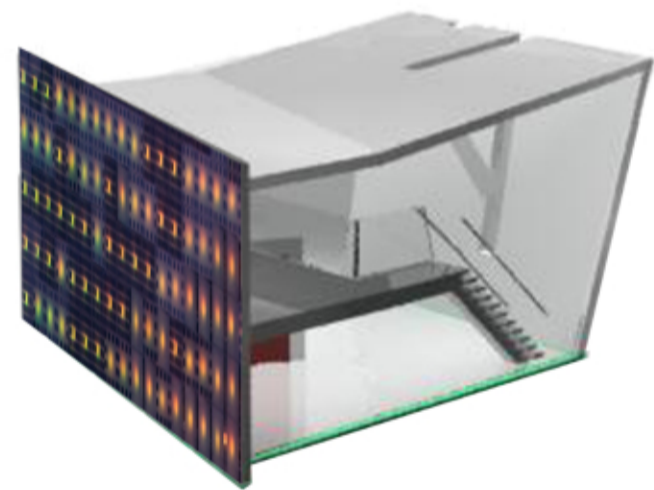


SOUTH FACADE



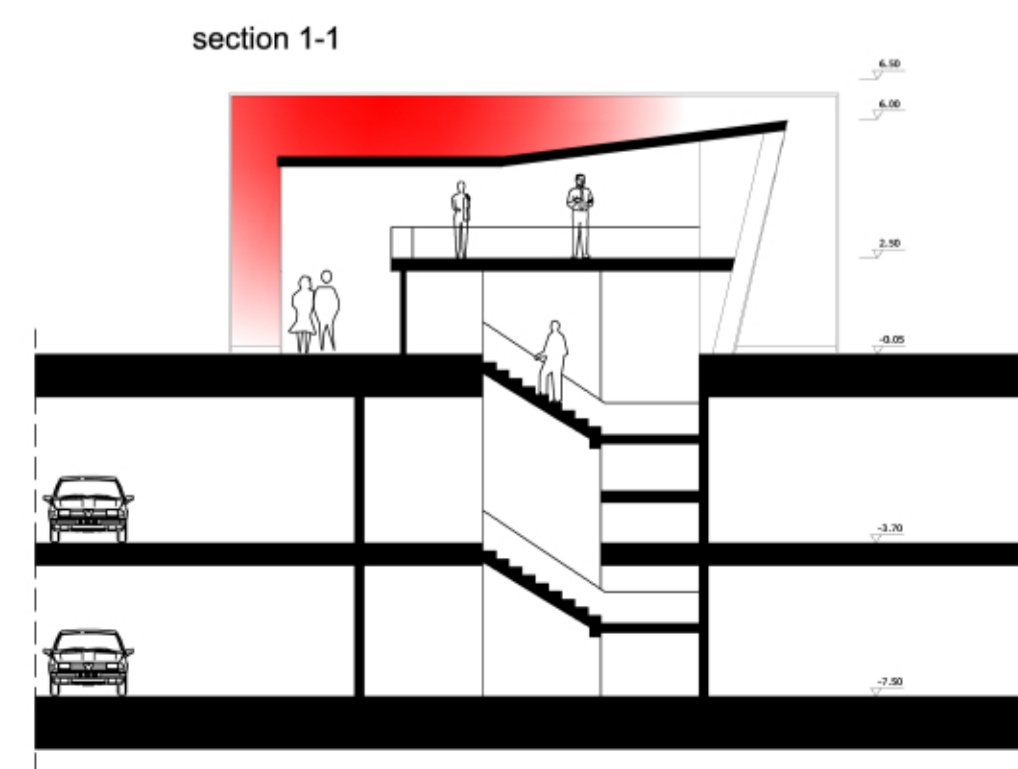
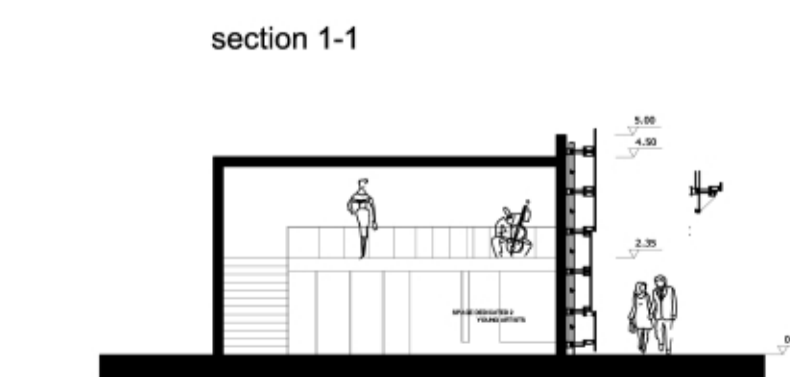
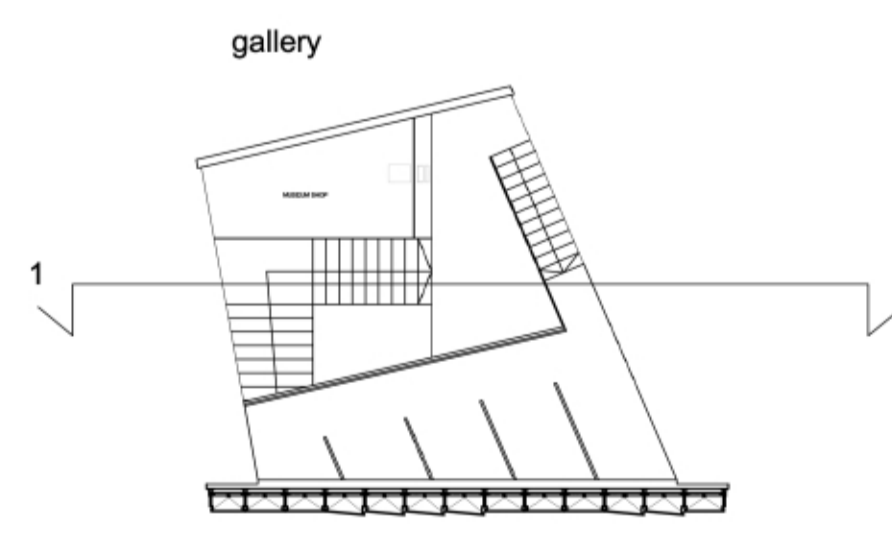
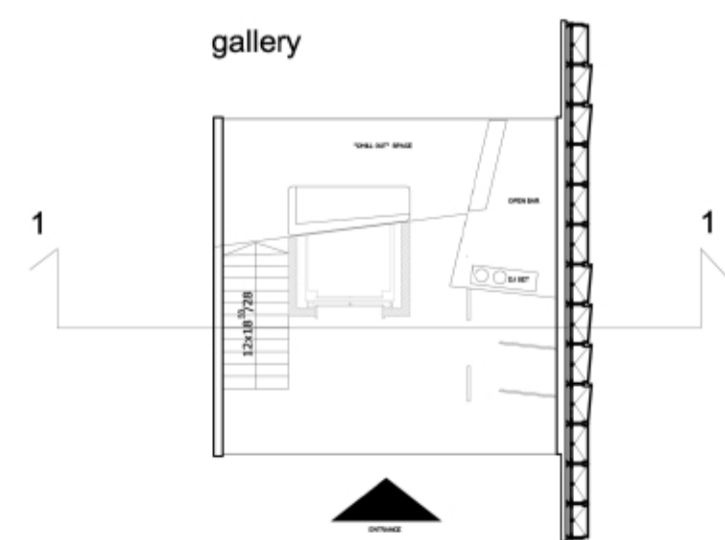
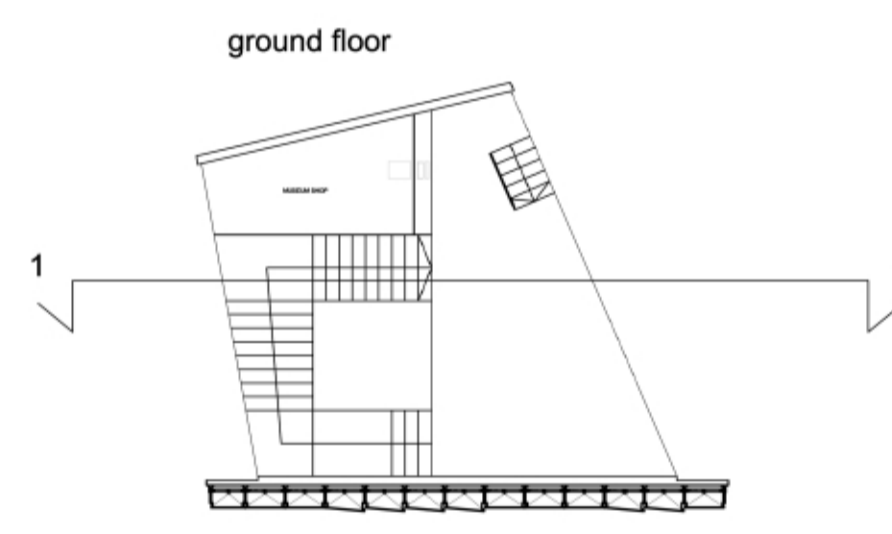
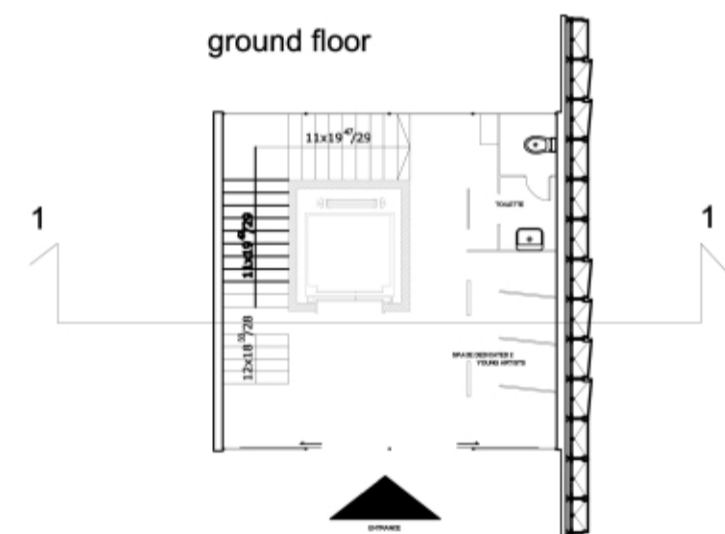
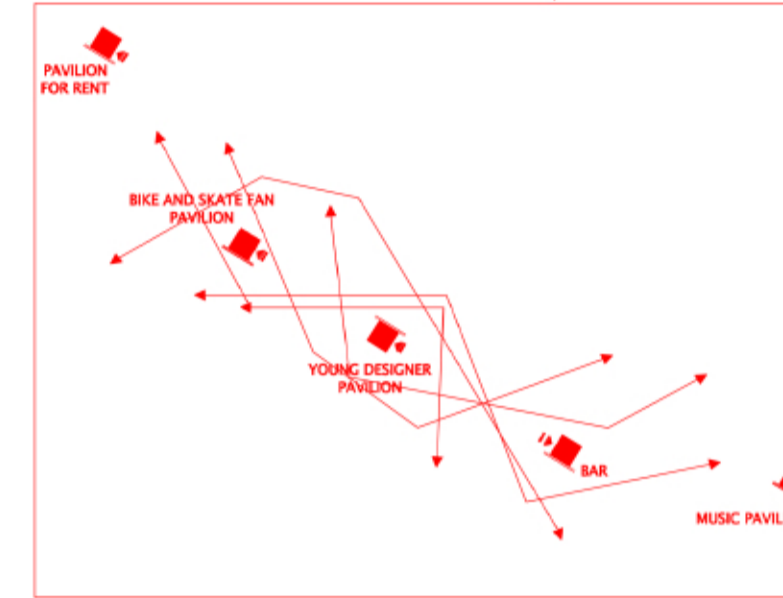
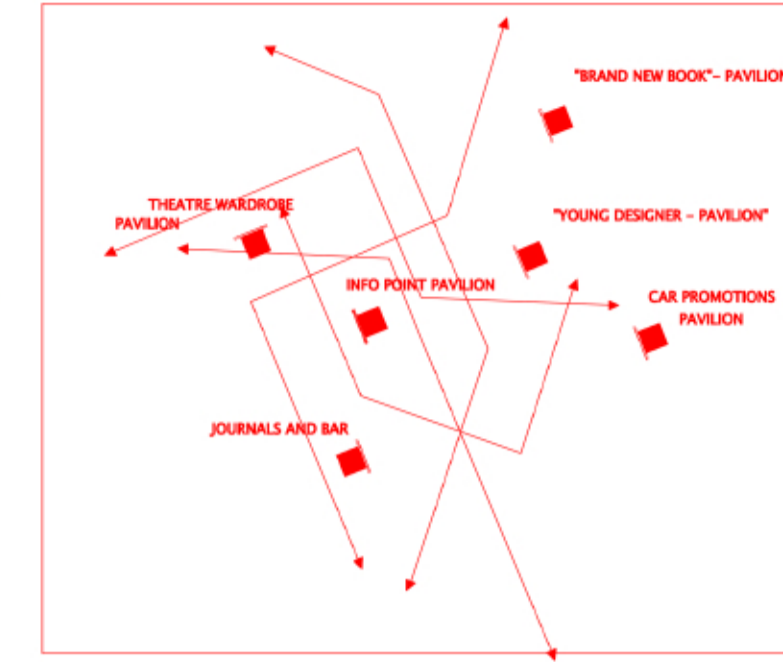
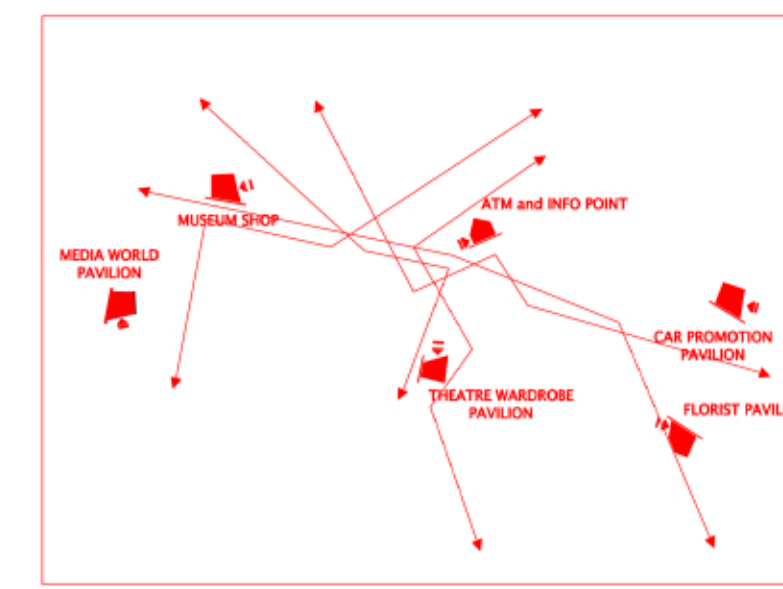
FRONT VIEW

PERSPECTIVE VIEWS:

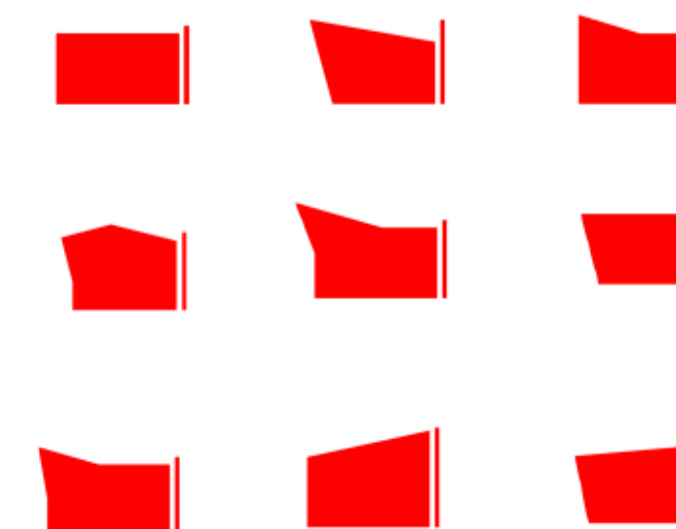


MASTER PLAN  
GROUND LEVEL

PAVILLION POSITIONS AND THEIR INTER-CONNECTIONS



GENESYS OF FORM-sections



Politecnico di Milano - Piacenza  
Facoltà di Architettura e Società  
Corso di Laurea specialistica in Architettura -  
Progettazione sostenibile di grandi opere

a.y. 2009/2010

supervisor: arch. prof. Alberico BARBIANO di BELGIOJOSO

NEW MASTER PLAN FOR THE SCALO  
FARINI IN MILAN. PEDESTRIAN AND  
VEHICULAR CIRCULATION SYSTEM  
AND CAR PARKING

PEDESTRIAN EXITS

STUDENT:  
Pavlovic Boban 723543

22. July 2010.

POSTER  
17