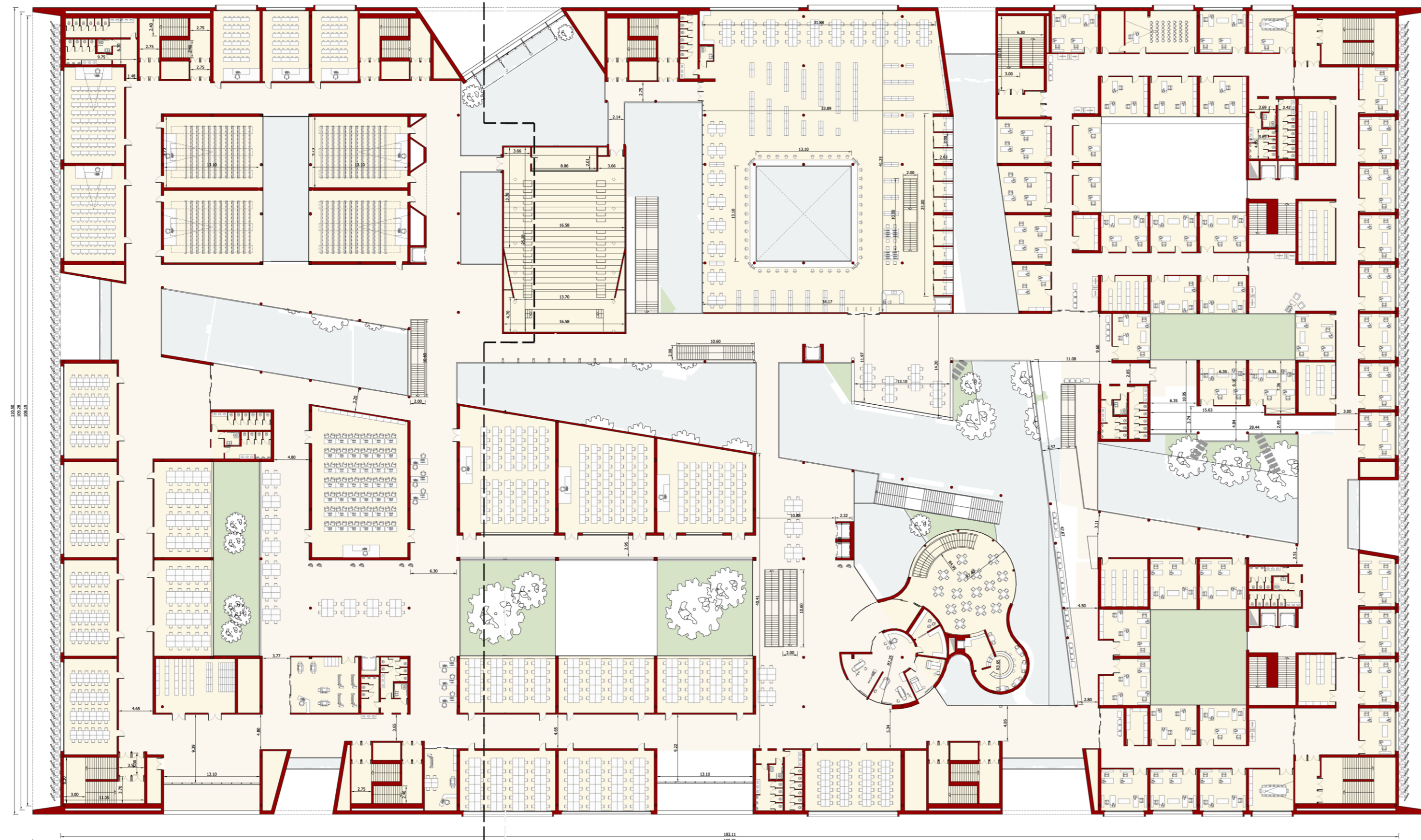
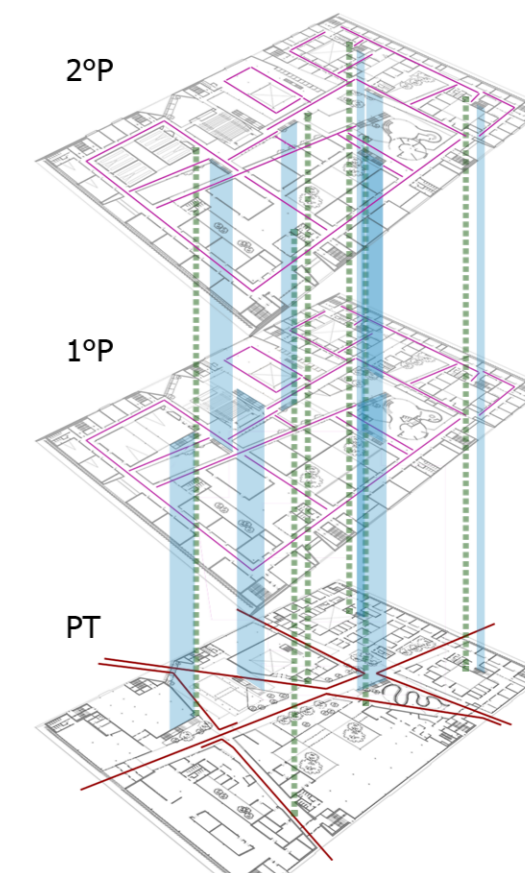


LIVELLO: PIANO 2° (+11,00m)

SEZIONE
TRASVERSALE



SEZIONE
TRASVERSALE



legenda:

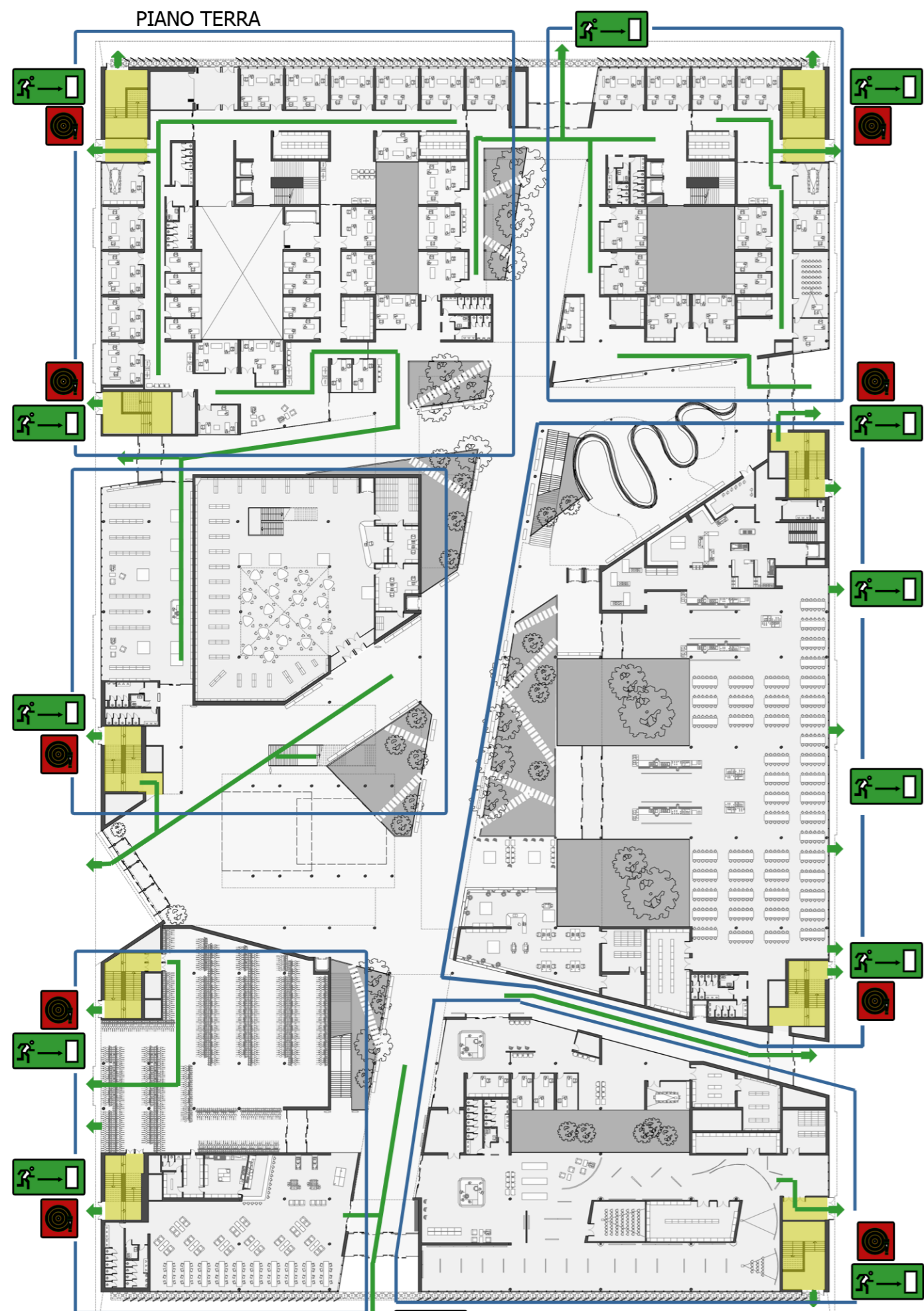
- percorsi piano terra
- percorsi piano 1° e 2°
- █ scale
- - - ascensori




legenda:

- █ aule lezione / studio / lavoro
- █ infermeria
- █ bar
- █ aule lezione
- █ biblioteca
- █ aula pc / deposito / sala stampa
- █ aule disegno
- █ uffici direzionali / uffici professori
- █ aula magna

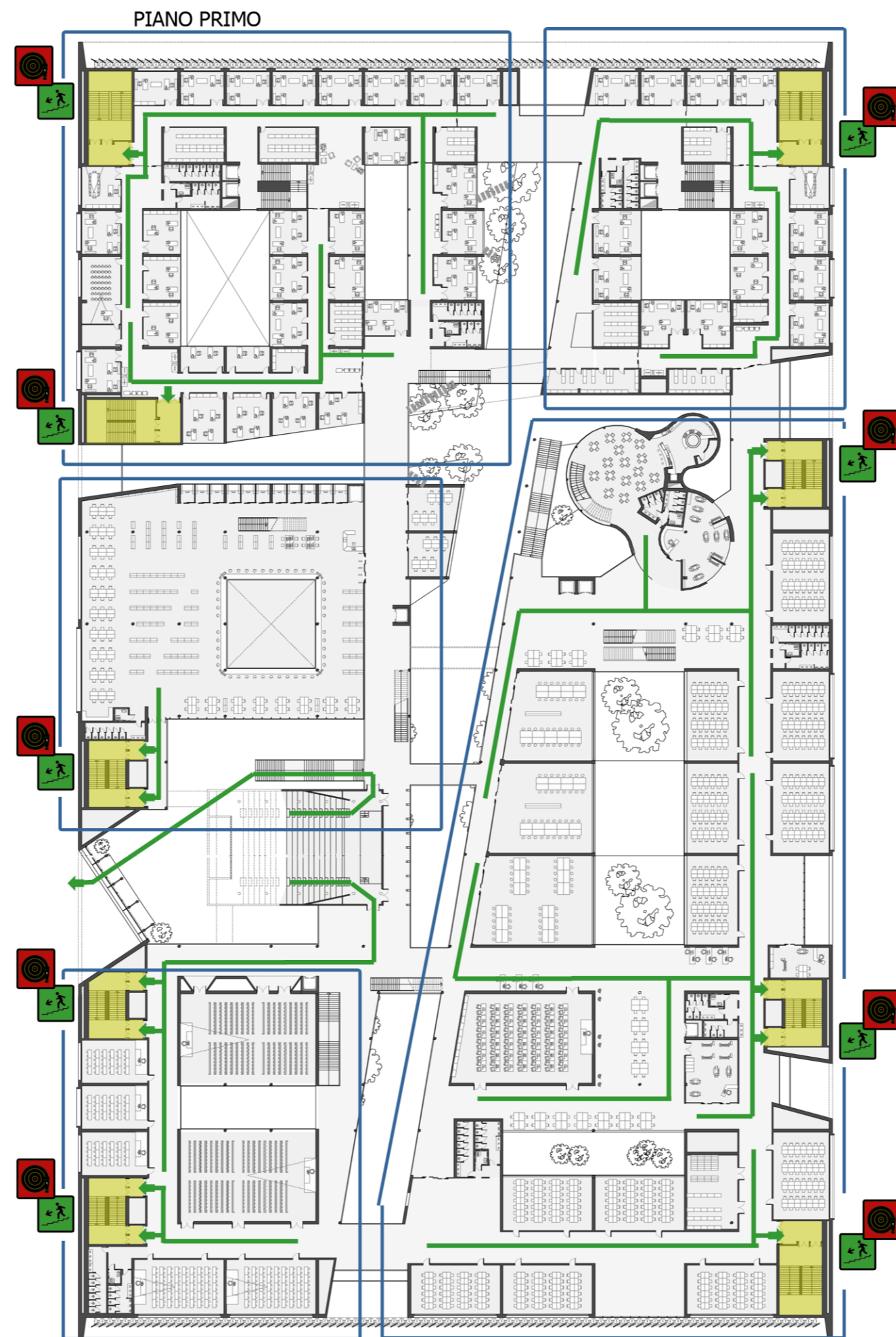





 estintori presenti in ogni locale e almeno 1 ogni 200m²

  compartimento antincendio

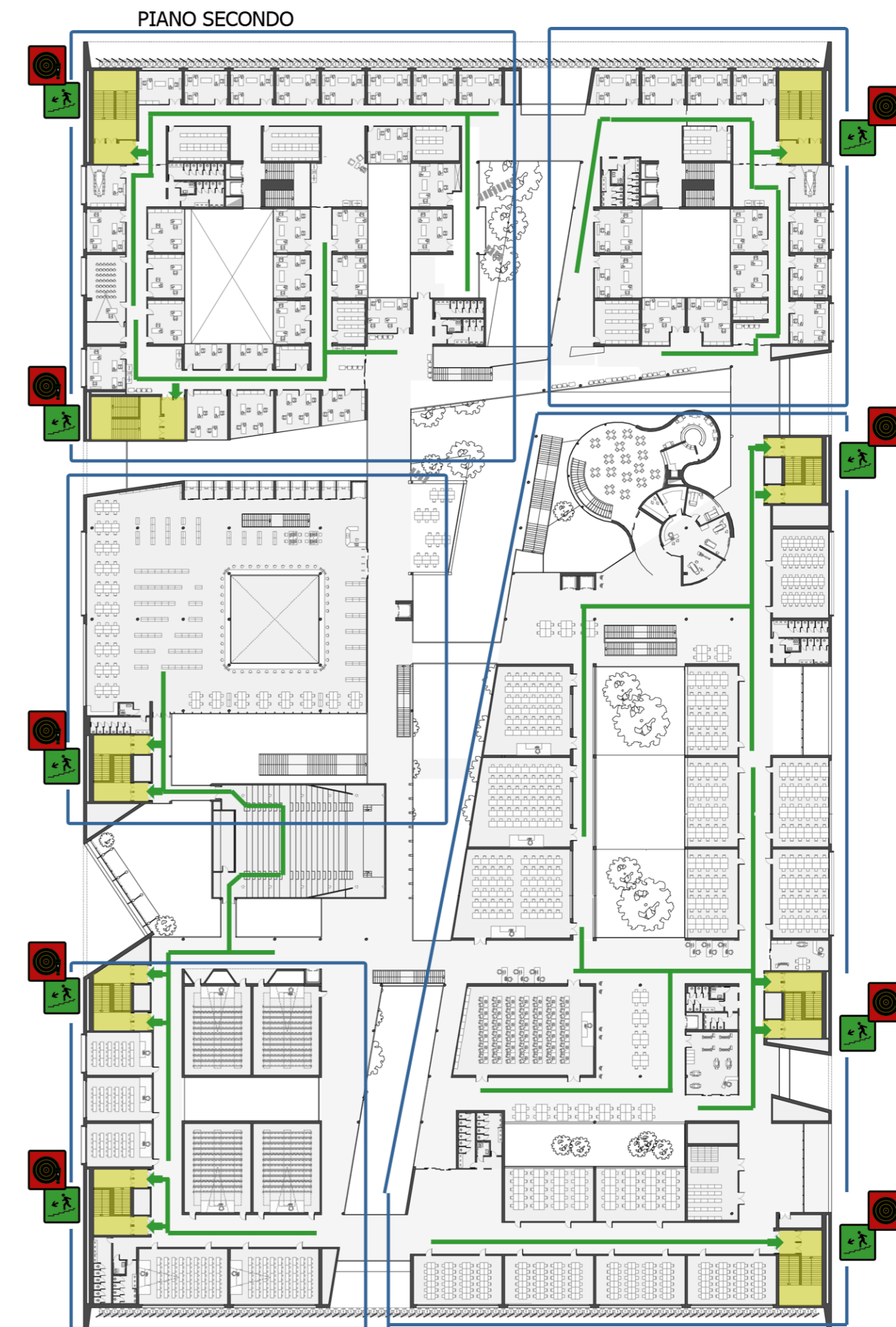
** ogni locale è dotato di rilevatore di fumo




 estintori presenti in ogni locale e almeno 1 ogni 200m²

  compartimento antincendio

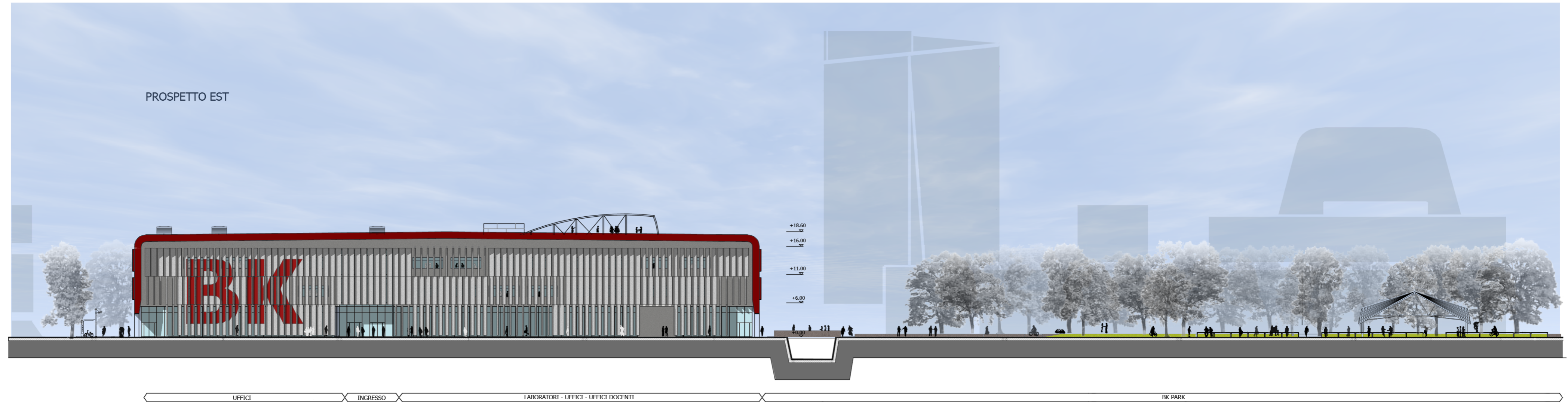
** ogni locale è dotato di rilevatore di fumo



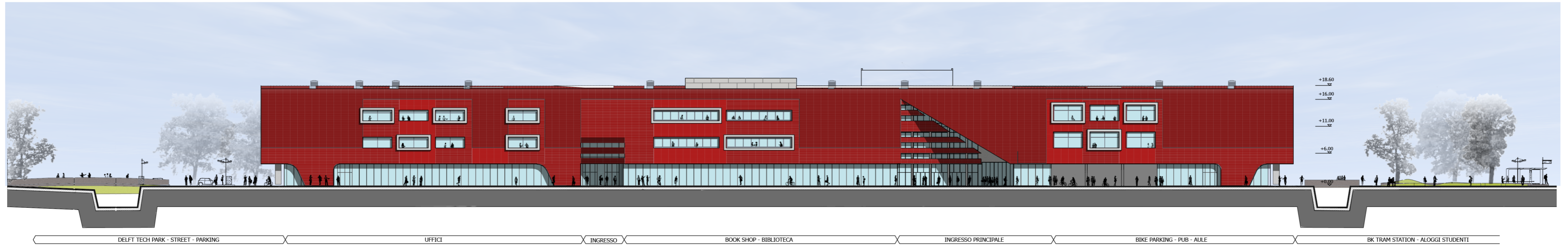
 estintori presenti in ogni locale e almeno 1 ogni 200m²

  compartimento antincendio

** ogni locale è dotato di rilevatore di fumo

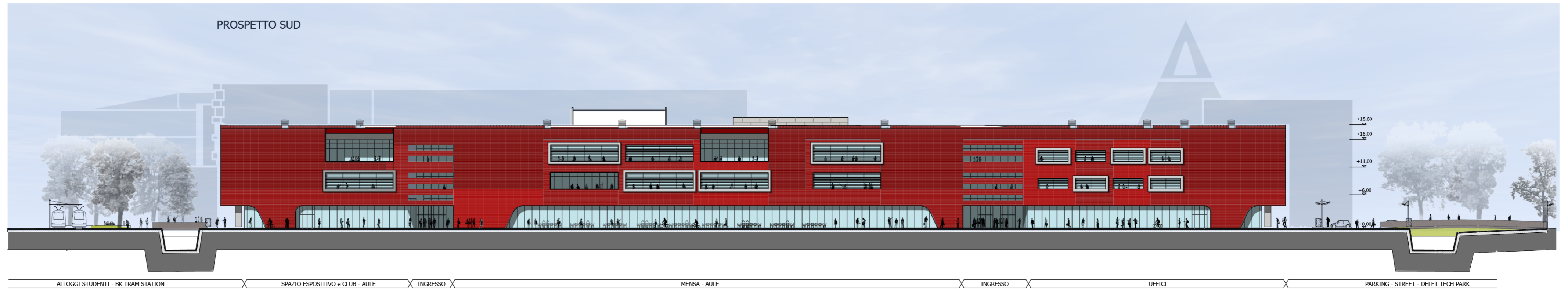


PROSPETTO NORD

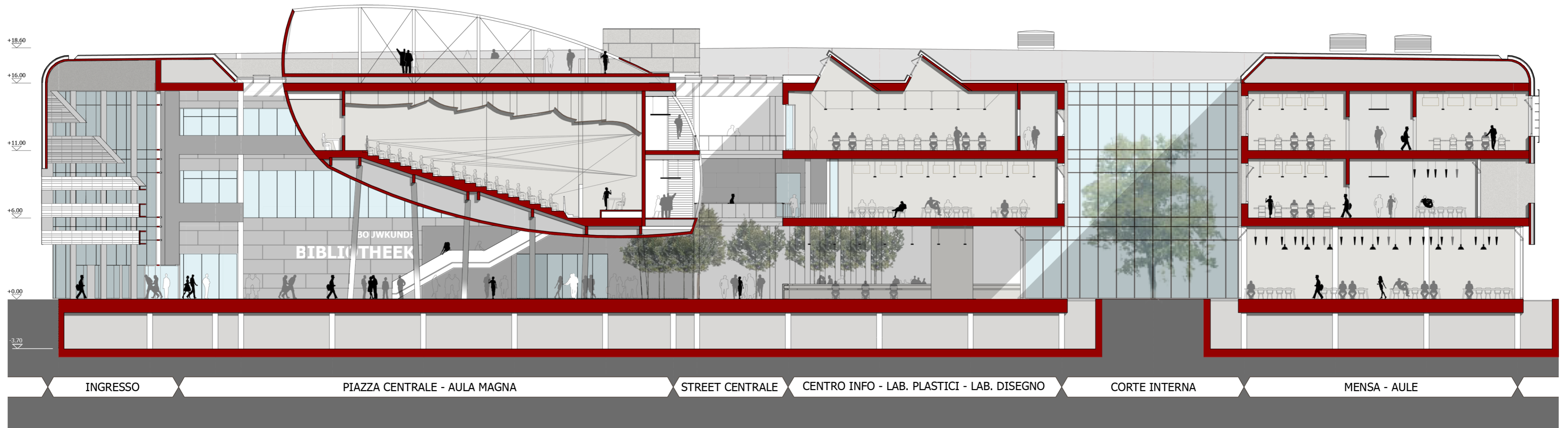


DELFT TECH PARK - STREET - PARKING UFFICI INGRESSO BOOK SHOP - BIBLIOTECA INGRESSO PRINCIPALE BIKE PARKING - PUB - AULE BK TRAM STATION - ALOGGI STUDENTI

PROSPETTO SUD

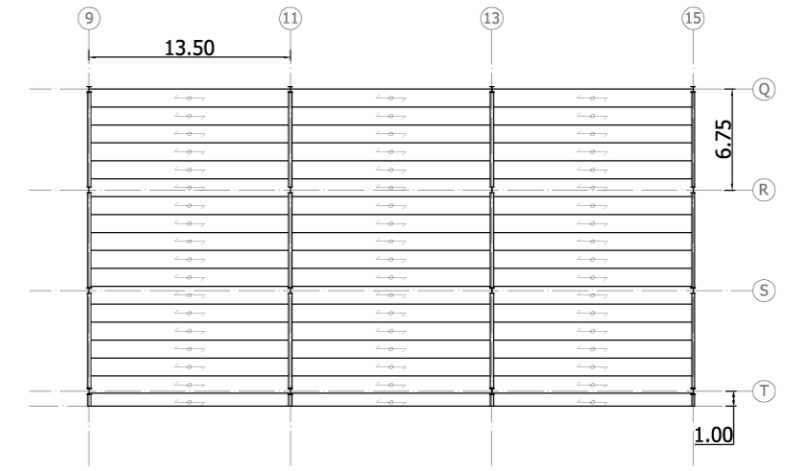


ALLOGGI STUDENTI - BK TRAM STATION SPAZIO ESPOSITIVO e CLUB - AULE INGRESSO MENSA - AULE INGRESSO UFFICI PARKING - STREET - DELFT TECH PARK

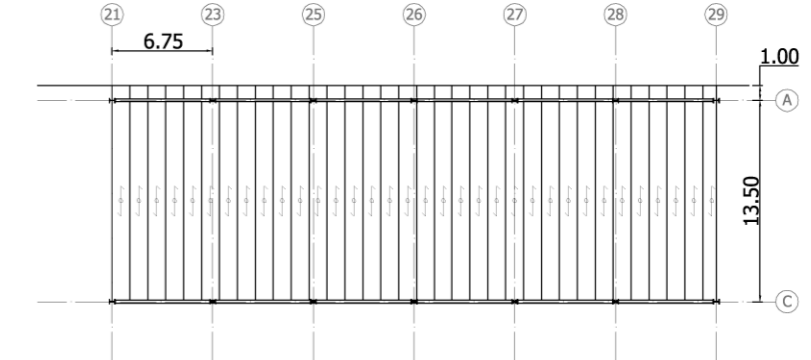




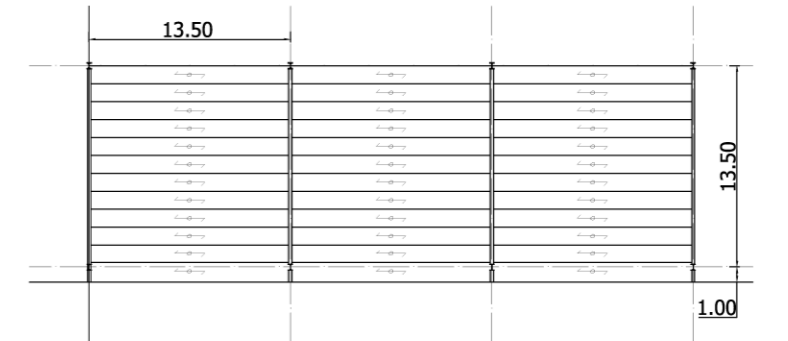
CASO STUDIO 1



CASO STUDIO 2



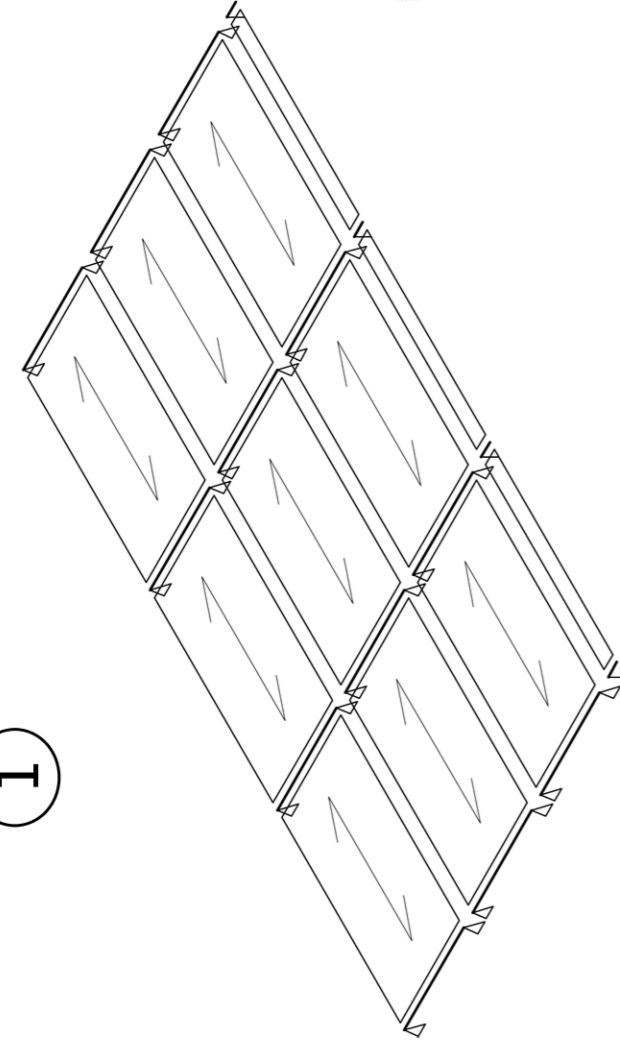
CASO STUDIO 2 (ALTERNATIVA)



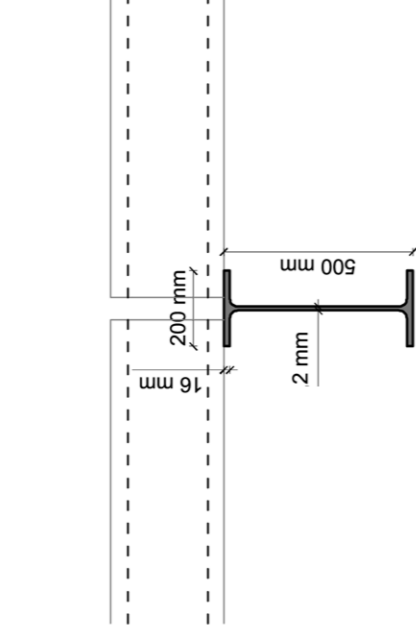
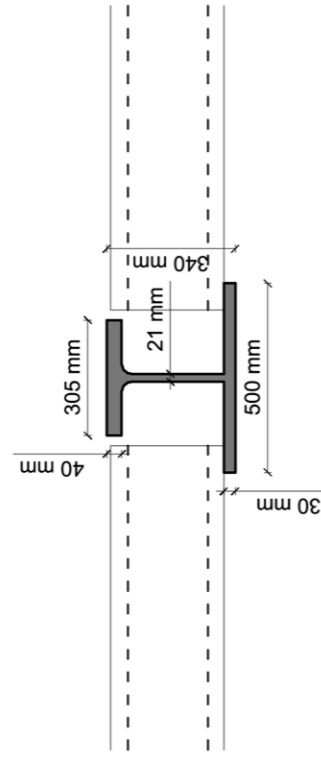
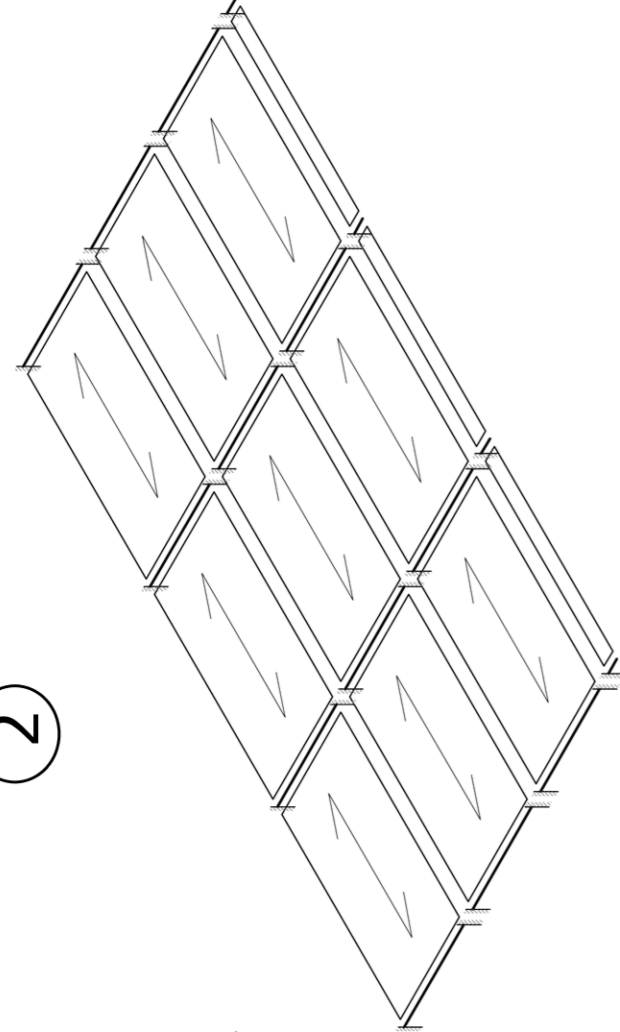
LEGENDA

- GIUNTI STRUTTURALI
- CAVEDI
- PASSERELLE CON STRUTT. ACCIAIO
- SOLAIO IN CLS PREFABBRICATO
- ZONE IN CLS GETTATO
- ZONE DI CONTROLLO
- SITUAZIONI STUDIATE

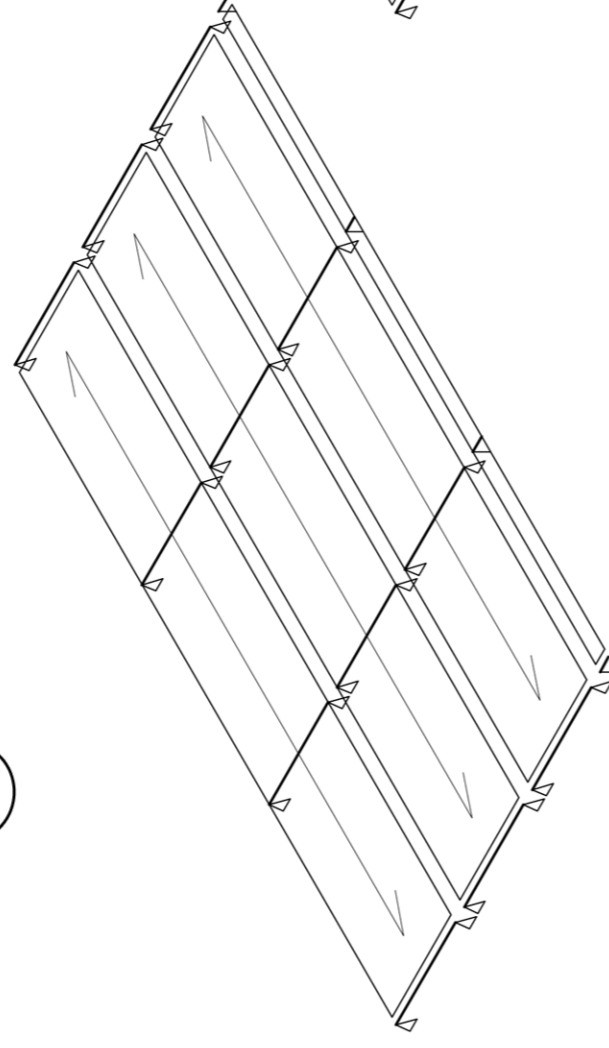
1



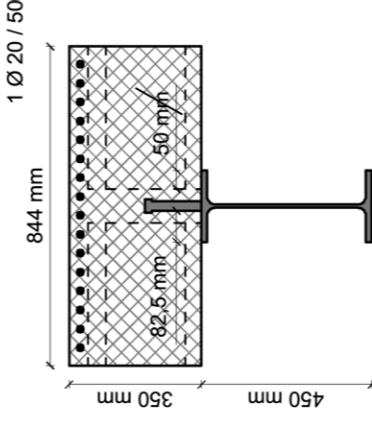
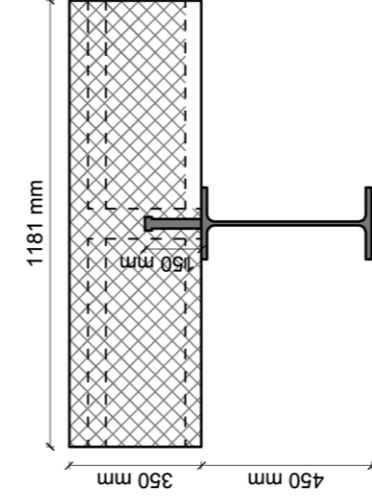
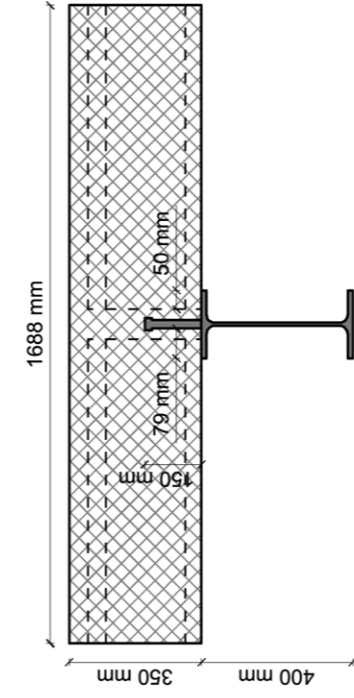
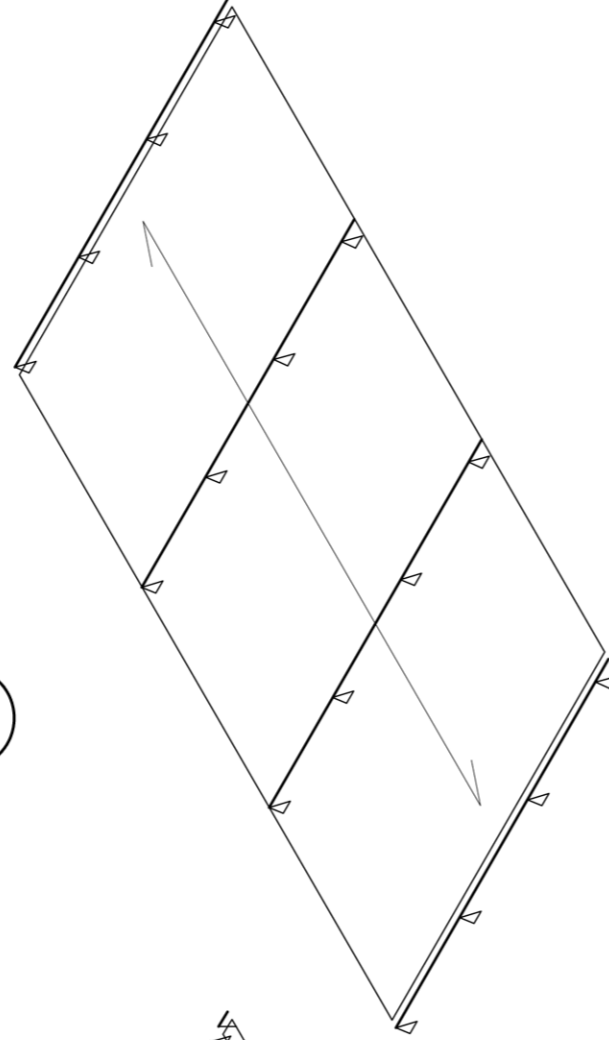
2



3

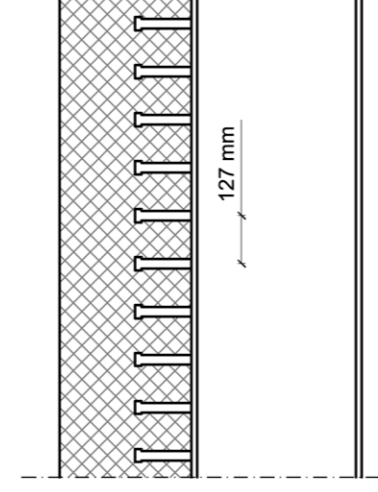
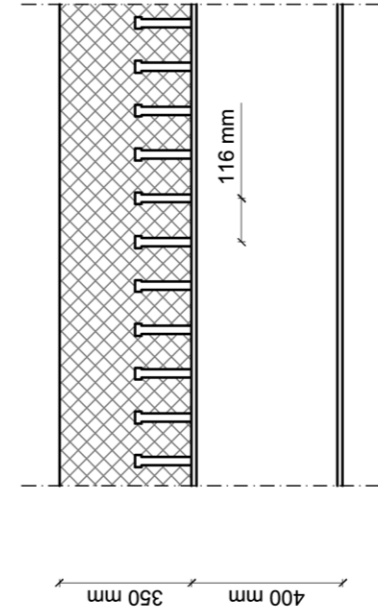


4

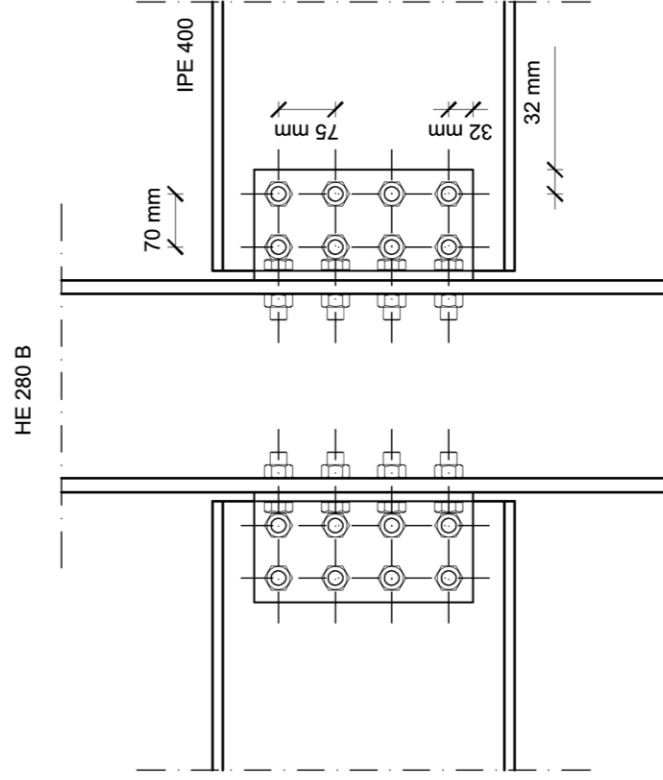


Sezione in campata

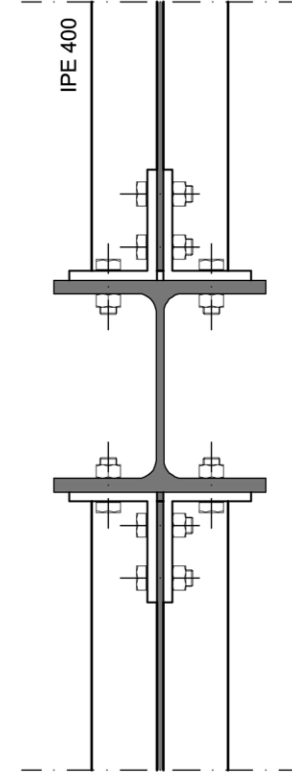
Sezione all'appoggio



VISTA FRONTALE



VISTA IN PIANTA

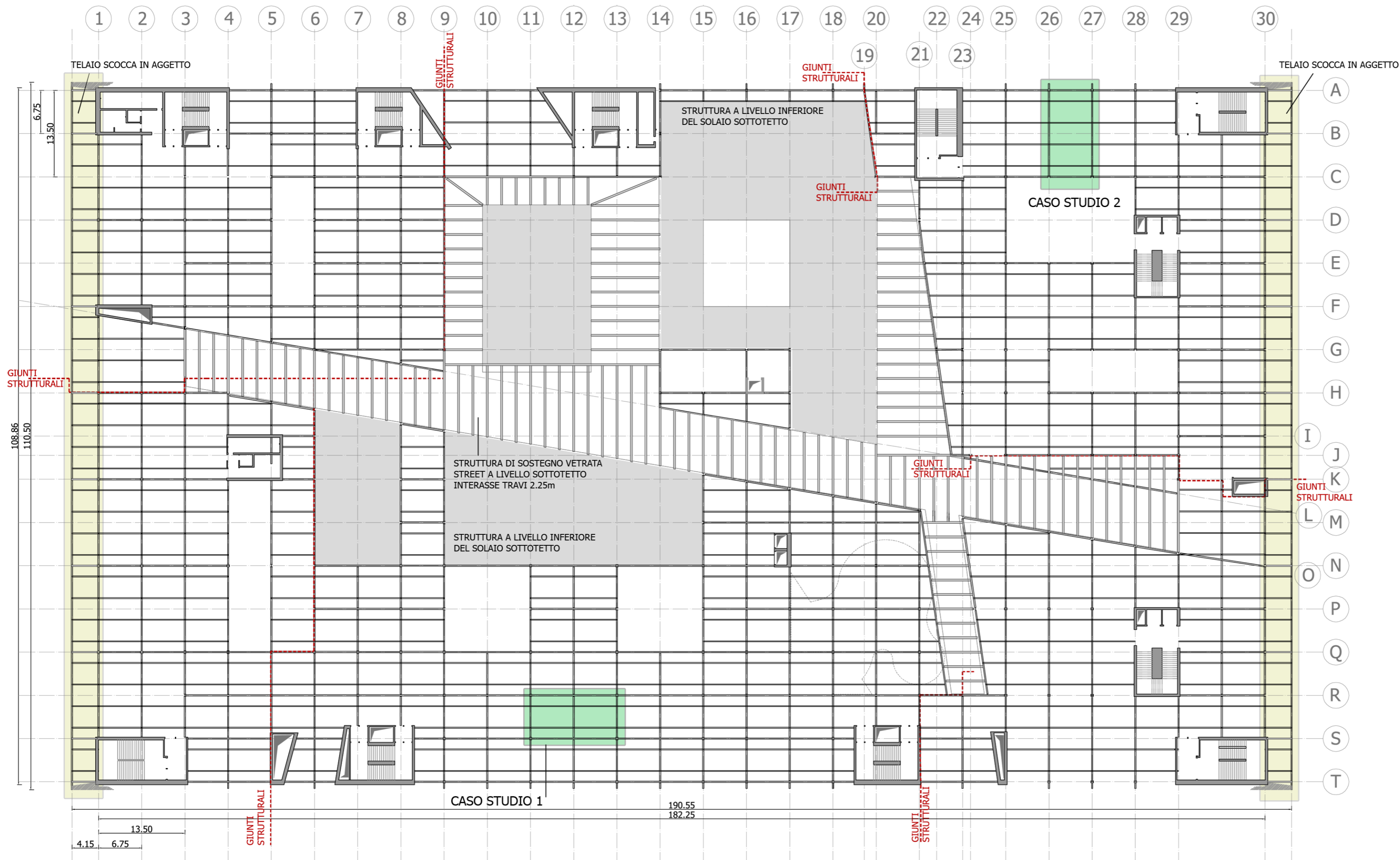


TIPOLOGIE DI SCHEMI ANALIZZATI

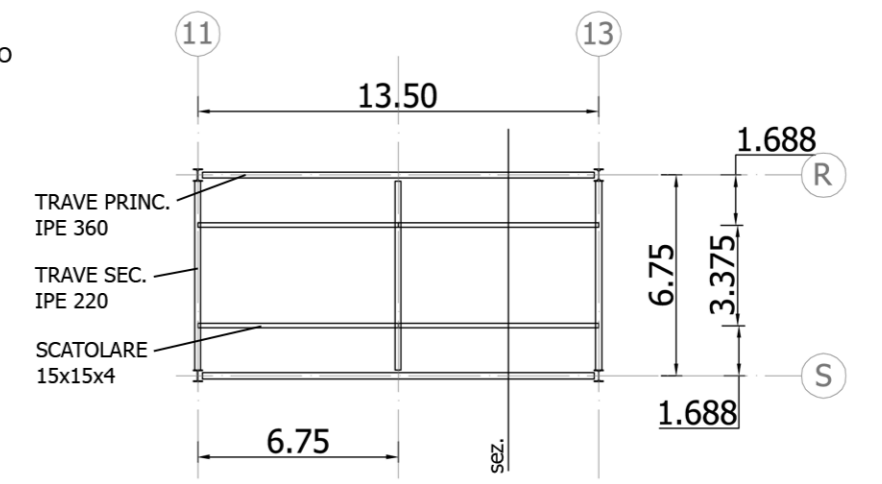
- ① TRAVI IN ACCIAIO APPOGGIATE, SOLAI ALVEOLARI APPOGGIATI
- ② TRAVI IN ACCIAIO INCASTRATE, SOLAI ALVEOLARI APPOGGIATI
- ③ TRAVI MISTE ACC-CLS APPOGGIATE, SOLAI ALVEOLARI CONTINUI (SOLUZIONE ADOTTATA)
- ④ TRAVI MISTE ACC-CLS CONTINUE, SOLAI ALVEOLARI CONTINUI

UNIONE IMBULLONATA (CERNIERA) TRA TRAVE E PILASTRO

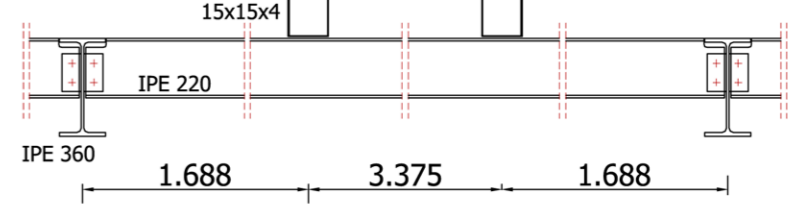
SCALA 1:10



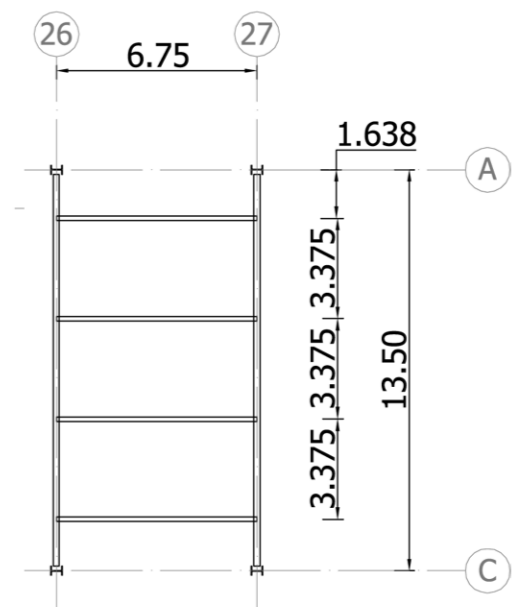
CASO STUDIO 1



RIVESTIMENTO RIVERCLACK



CASO STUDIO 2



LEGENDA

- GIUNTI STRUTTURALI DEL TELAI COV.
- CAVEDI
- ZONE DI CONTROVENTO
- TRAVI COPERTURA VETRATA