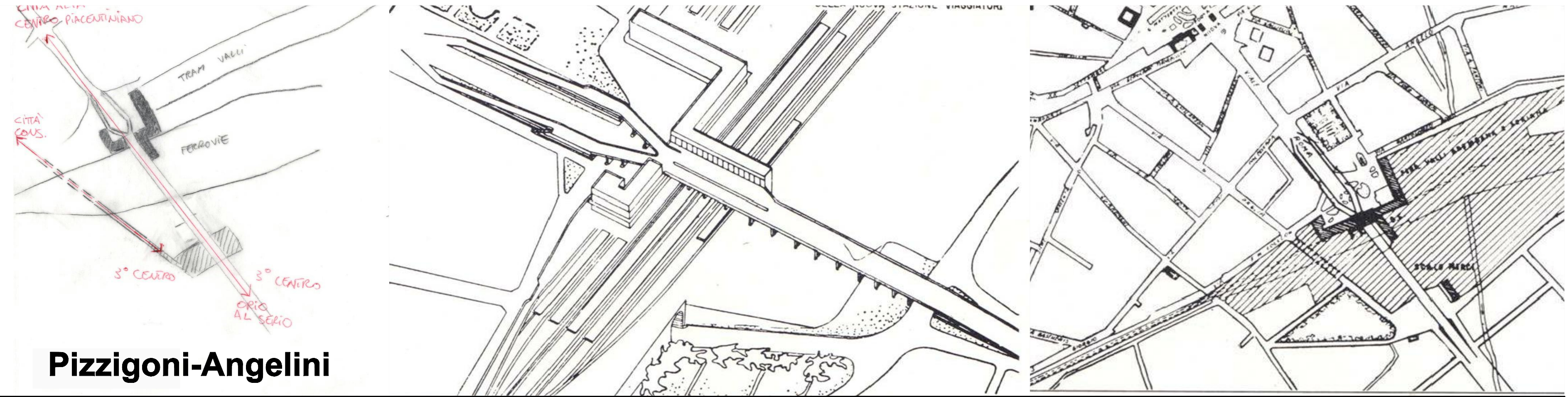
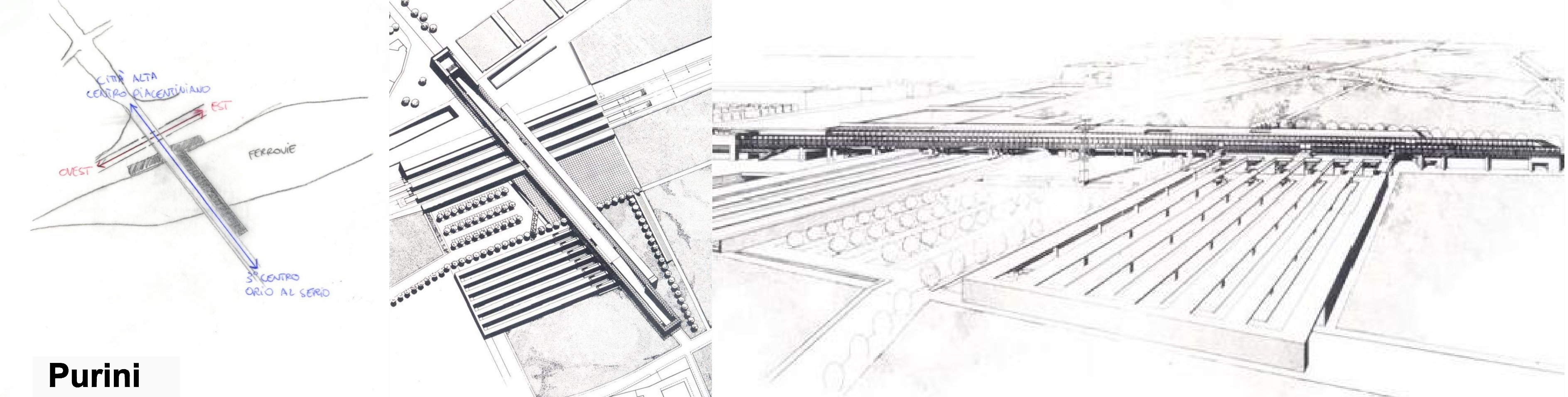


1  
9  
4  
7



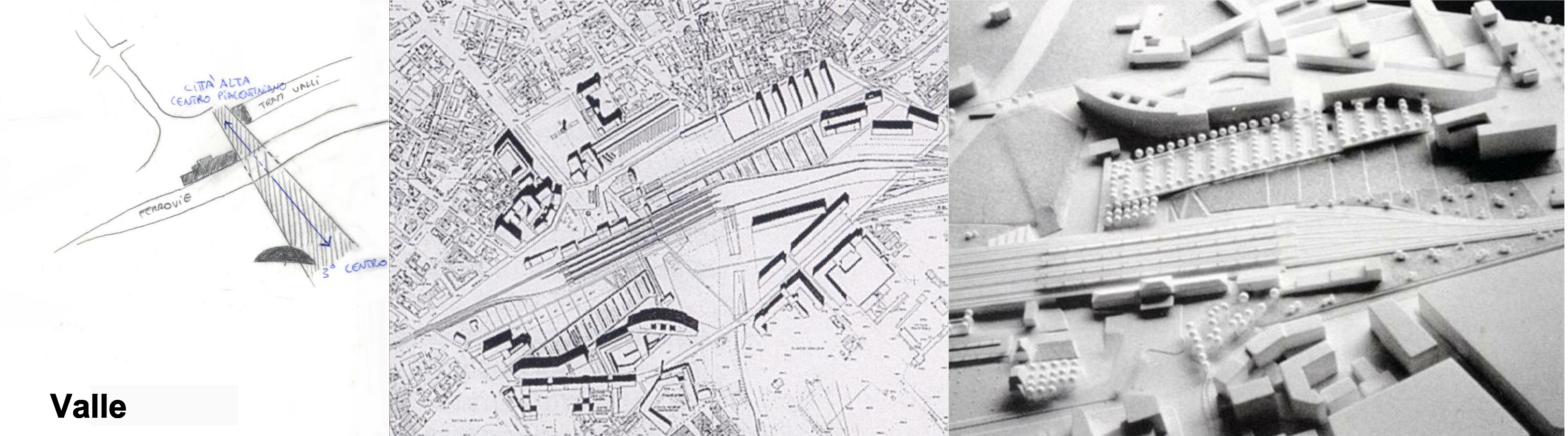
Pizzigoni-Angelini

1  
9  
7  
7



Purini

1  
9  
9  
7



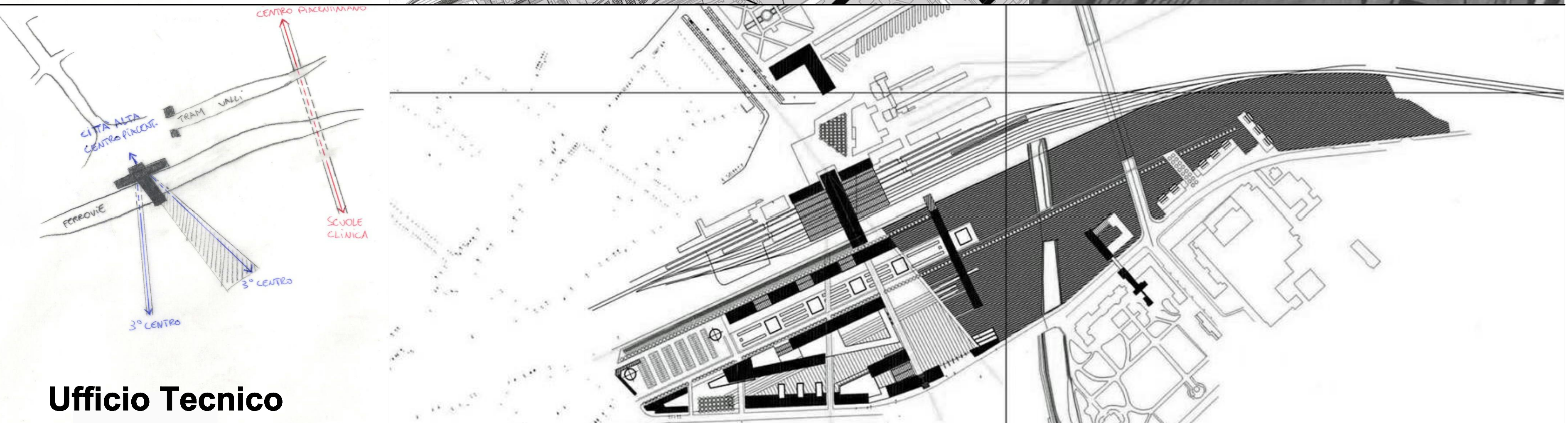
Valle

1  
9  
9  
9



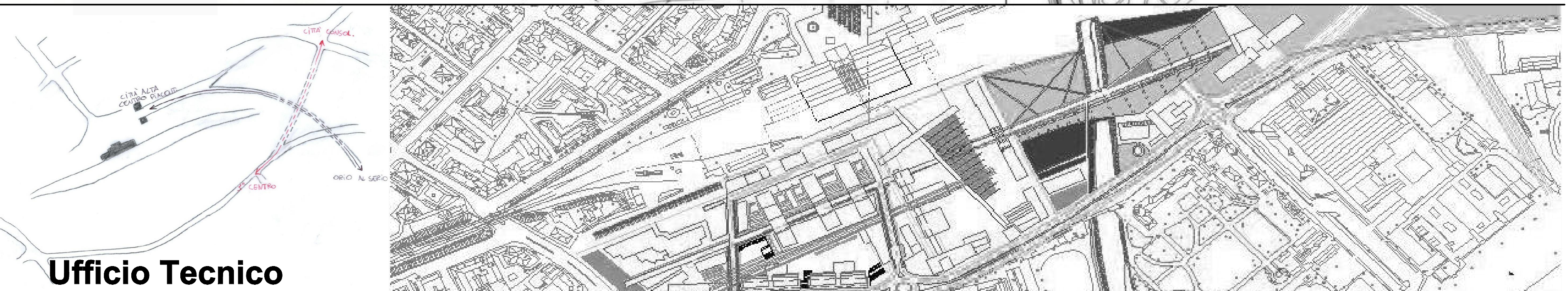
Bosi-Cortinovis

2  
0  
0  
1

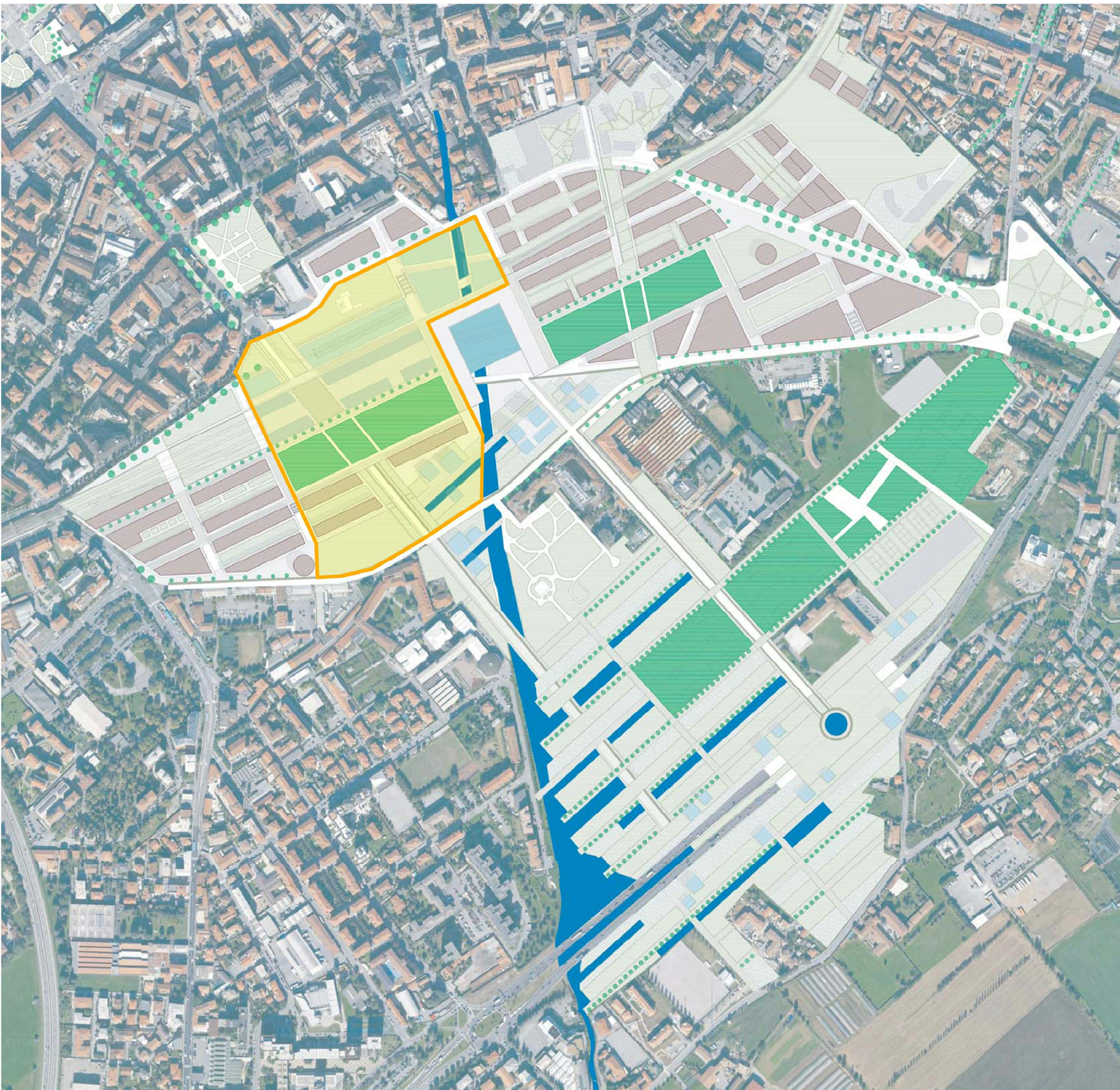


Ufficio Tecnico

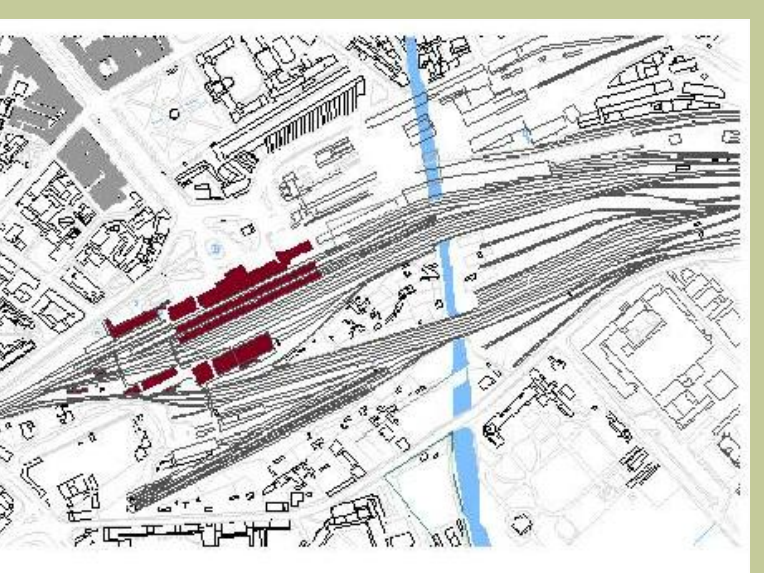
2  
0  
0  
3



Ufficio Tecnico



Marinoni 2008



Tesi Laurea Magistrale - Nuove Centralità Urbane: Progetto della Stazione di Bergamo  
AA 2009/2010  
Progetto: Prof. Roberto Spagnolo  
Coordinatore: Prof. Massimiliano Roca  
Collaboratori: Arch. Marco Contardi - Arch. Chiara Guerini - Arch. Francesco Guerini

Il progetto  
**Il superamento del limite ferroviario**  
Pietro Mazzocchi 735264 - Chiara Fiorani 740559 - Paolo Pastorelli 740176  
**03**

**GreenStation**