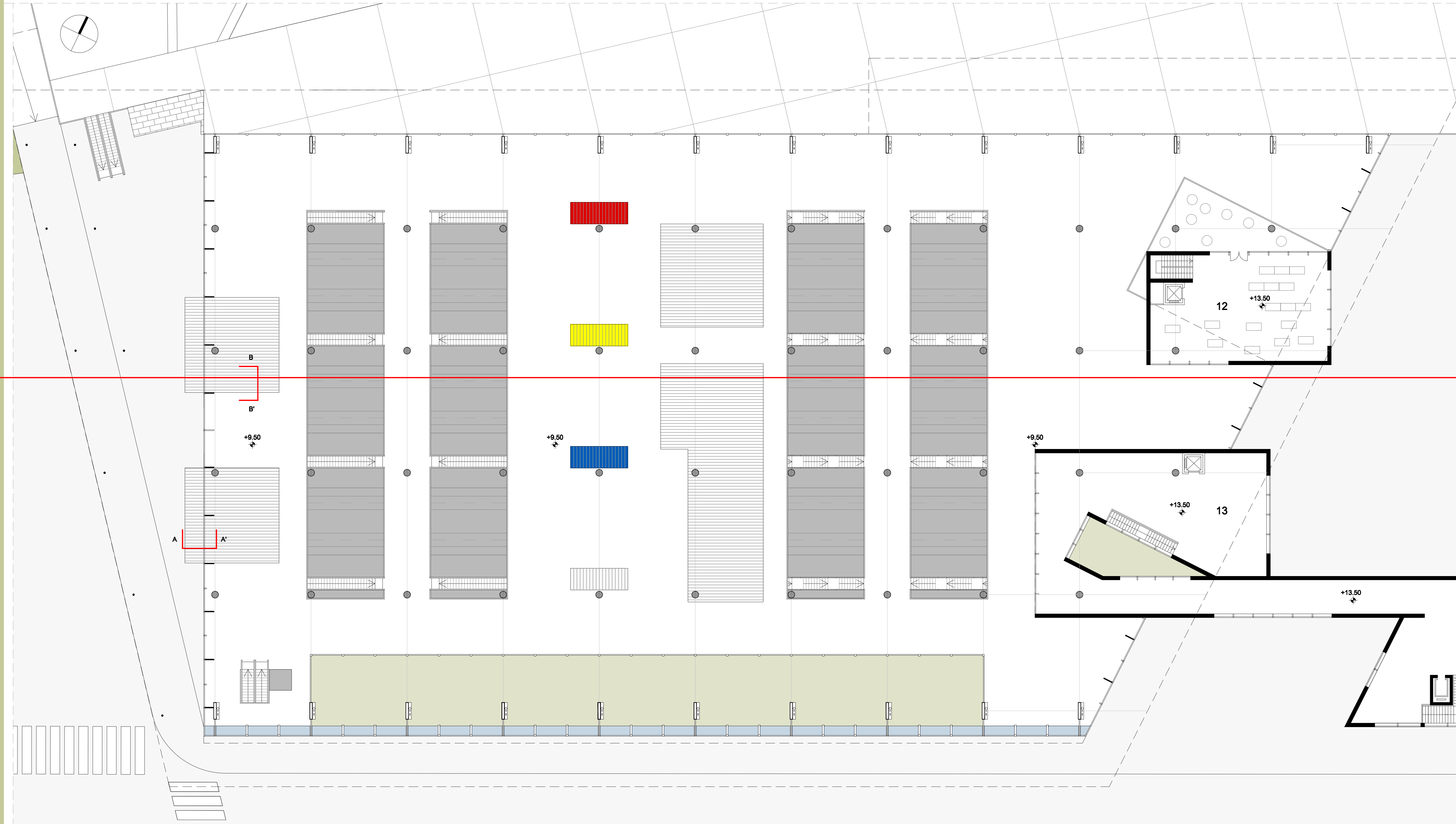
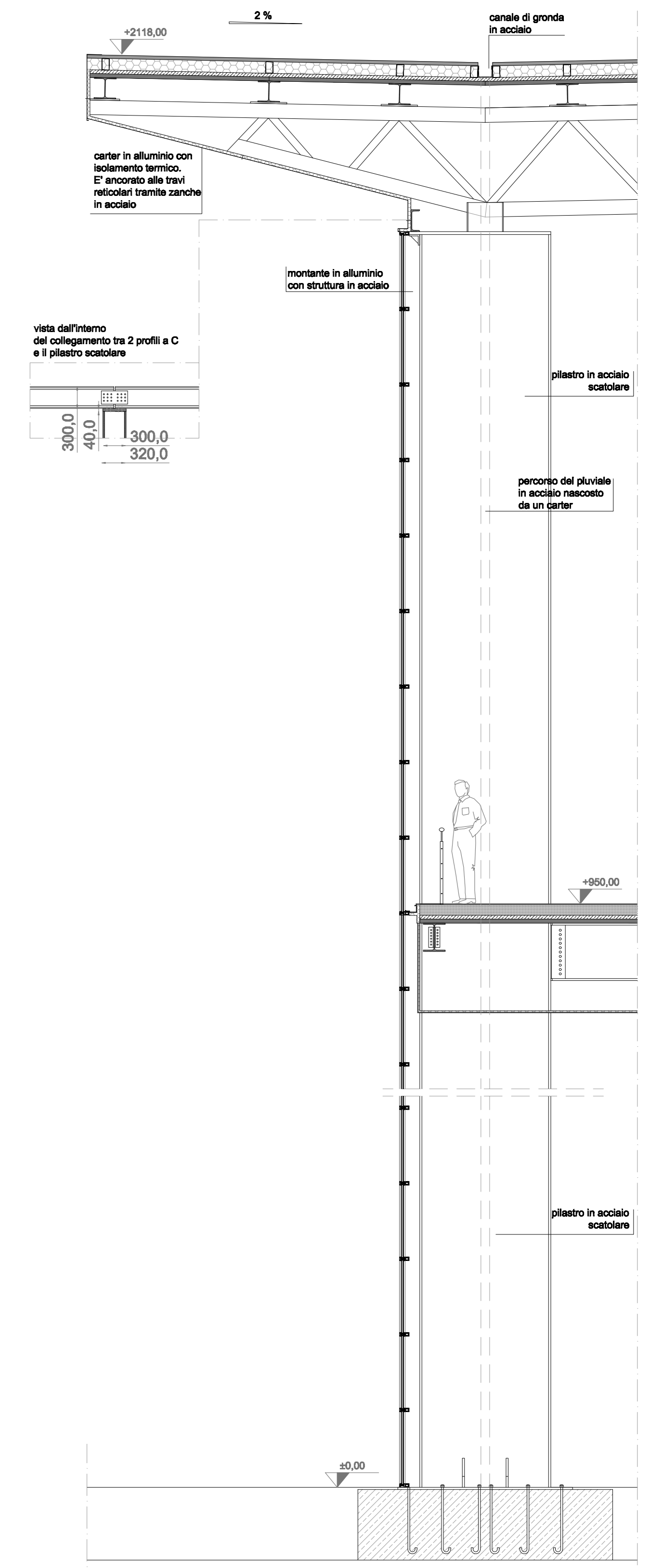


pianta stazione
quota +13.50

legenda:
12 ristorante (sala)
13 museo (primo piano)



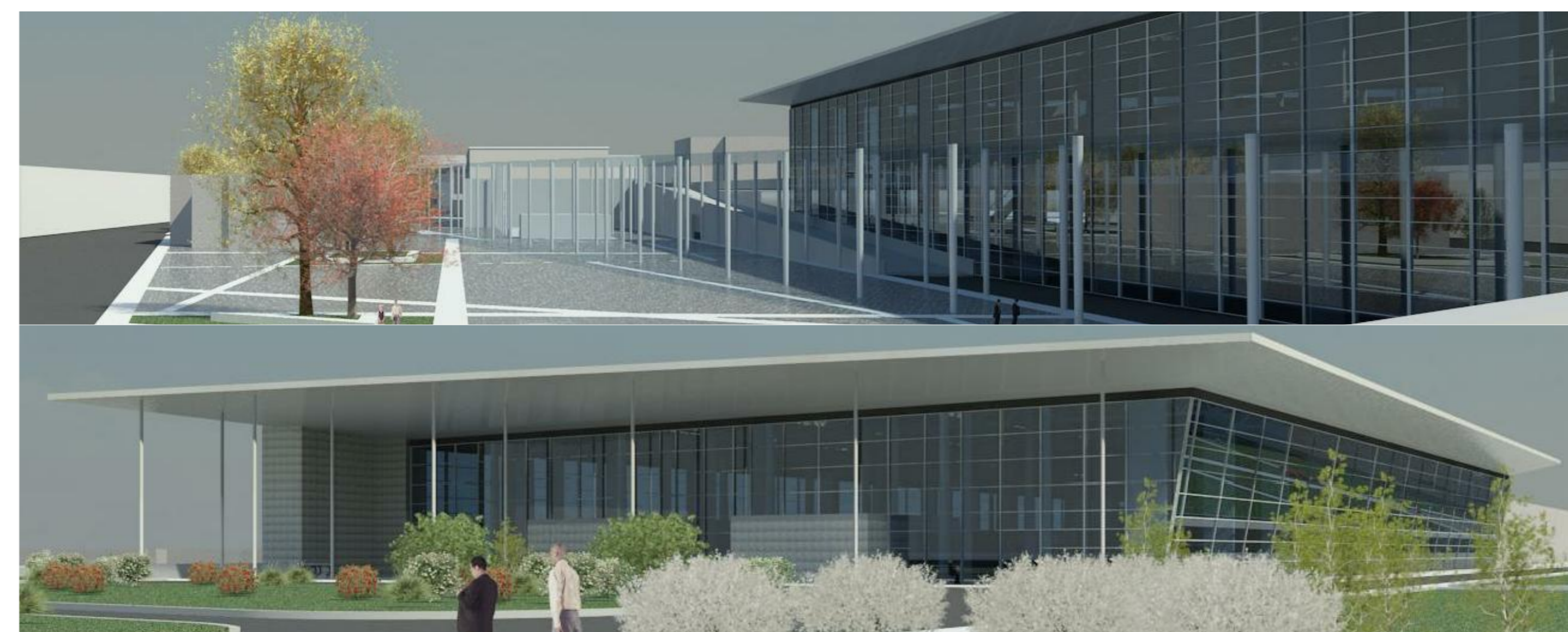
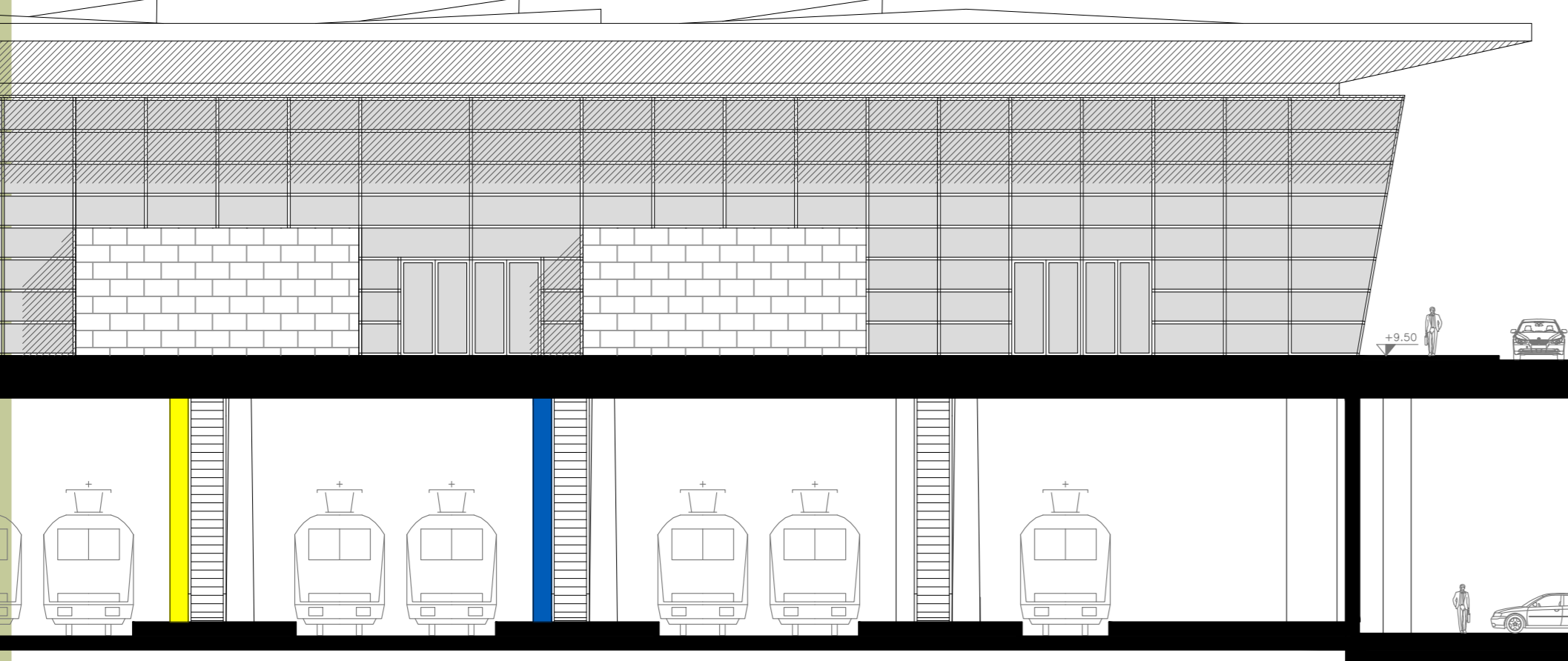
facciata nord
scala 1:50



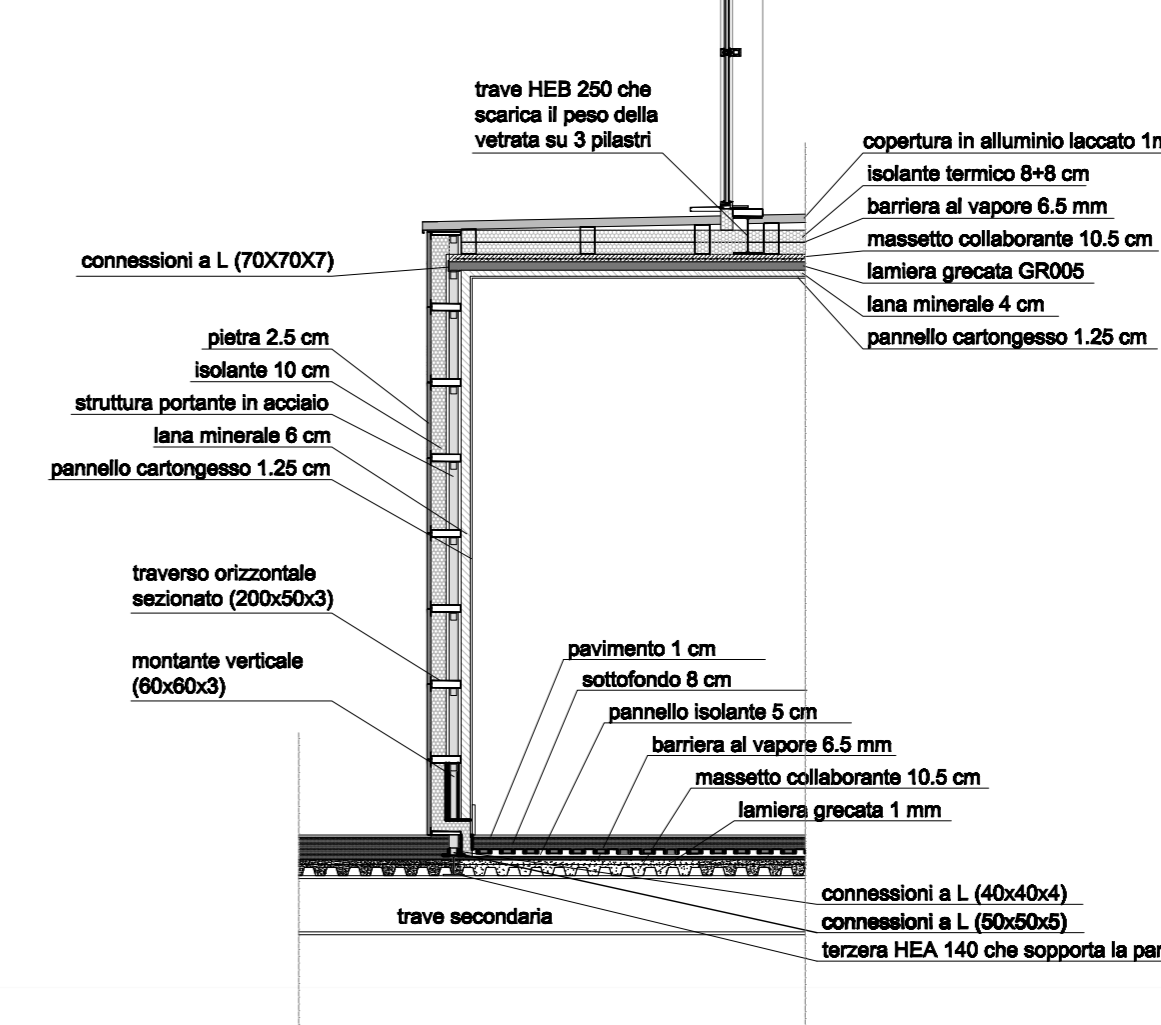
prospetto nord stazione



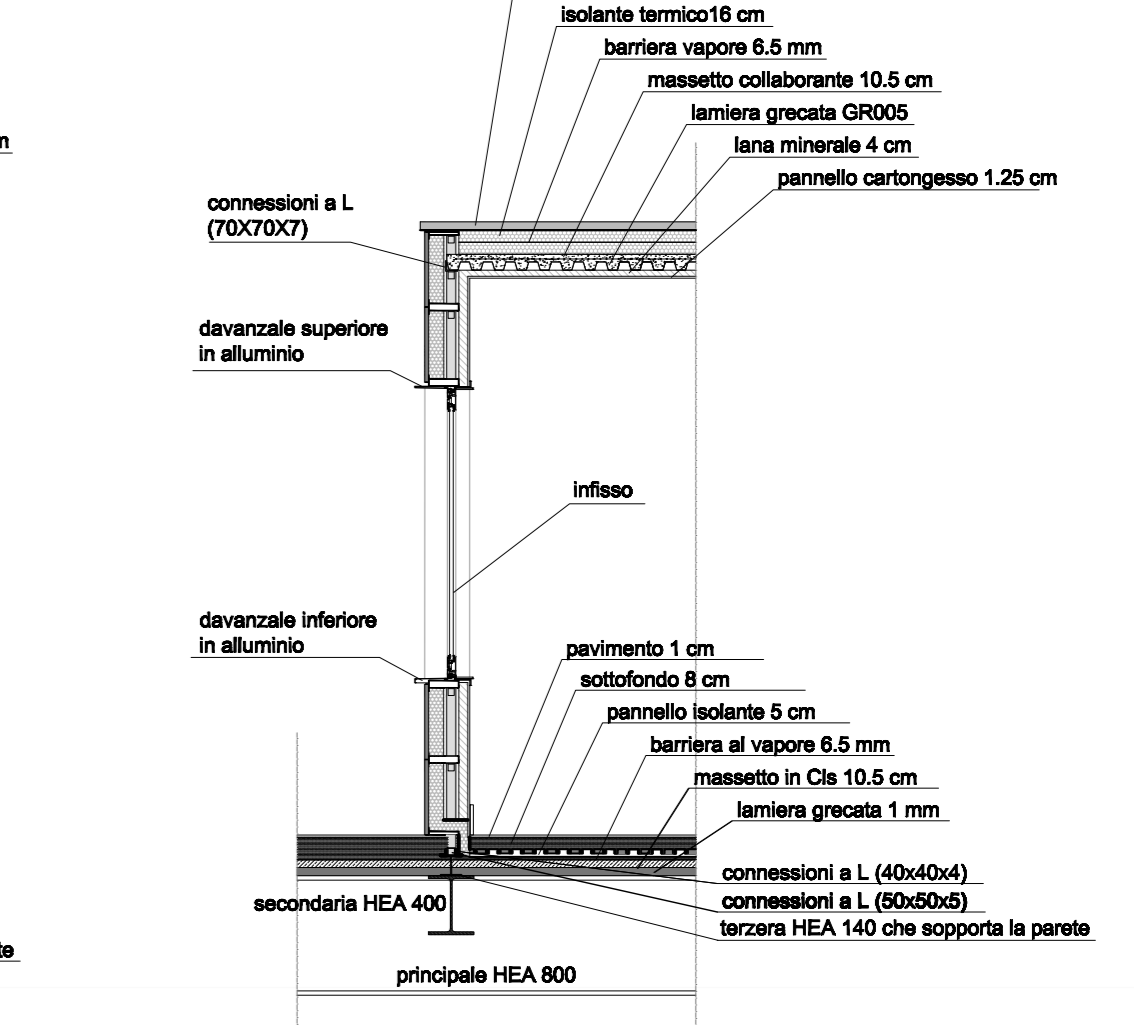
prospetto ovest stazione



sezione A-A'



sezione B-B'



Laboratorio di progettazione architettonica grandi opere
AA 2009/2010

Prof. Roberto Spagnolo - Prof. Massimiliano Roca
assistenti:
Arch. Marco Contardi - Arch. Chiara Guerini - Arch. Francesco Guerini

Il progetto
Piante e prospetti stazione
Pietro Mazzocchi 735264 - Chiara Fiorani 740559 - Paolo Pastorelli 740176

Scala 1:200

08a

GreenStation