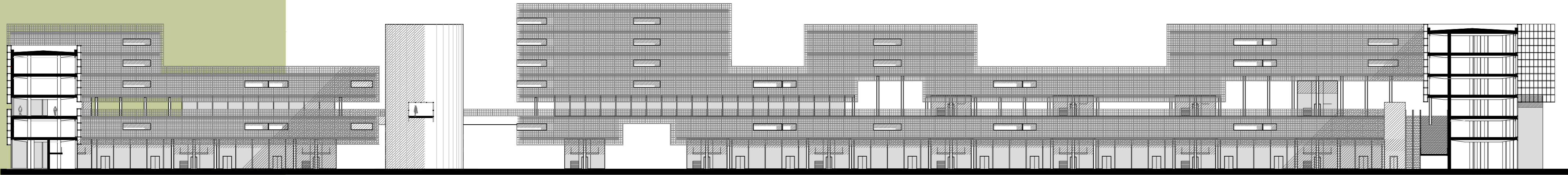
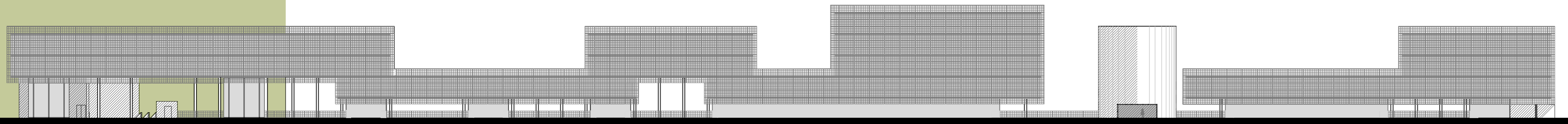


sezione DD' 1:500



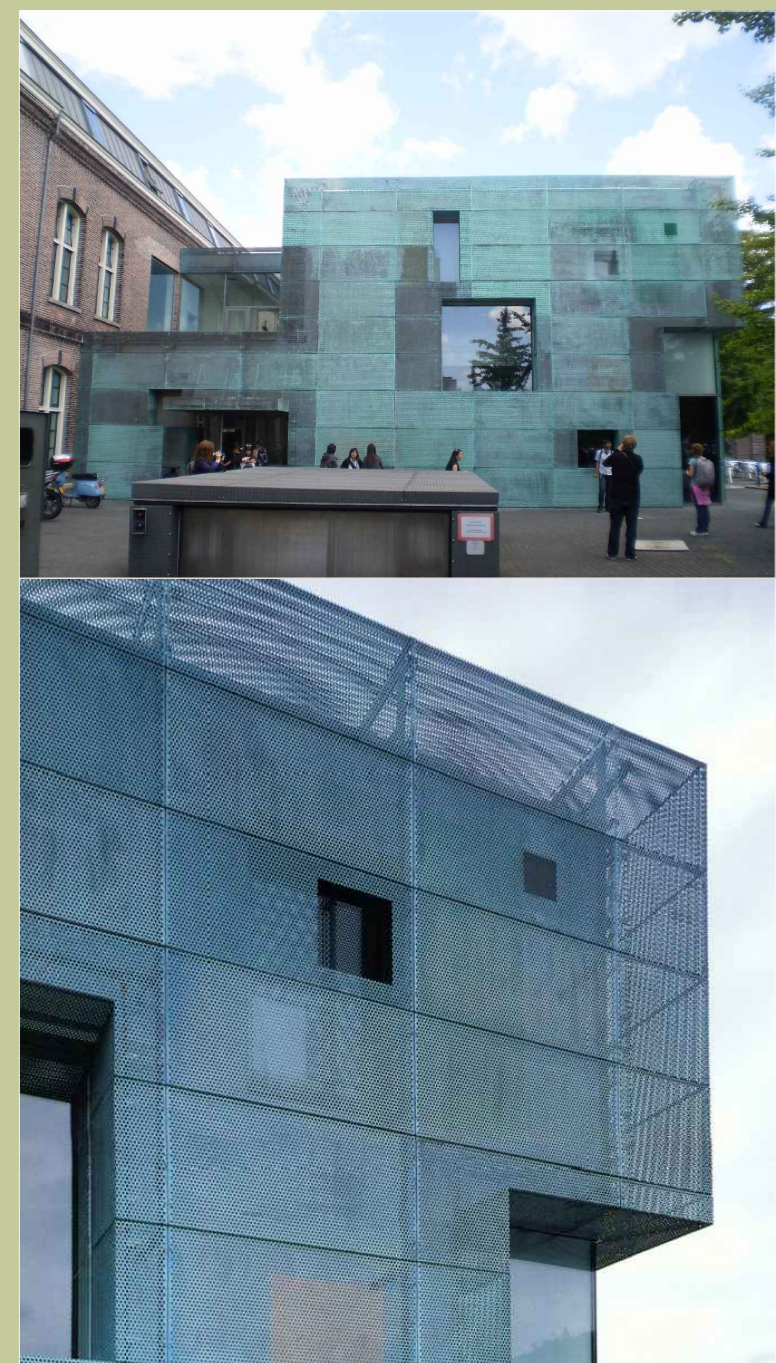
prospetto nord 1:500



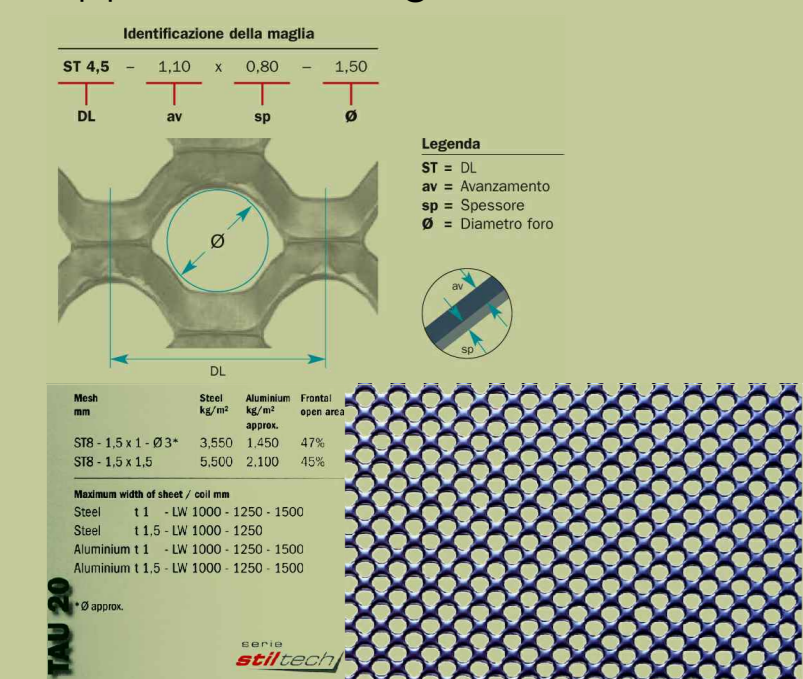
Unité d'Abitation, Le Corbusier, Marsiglia



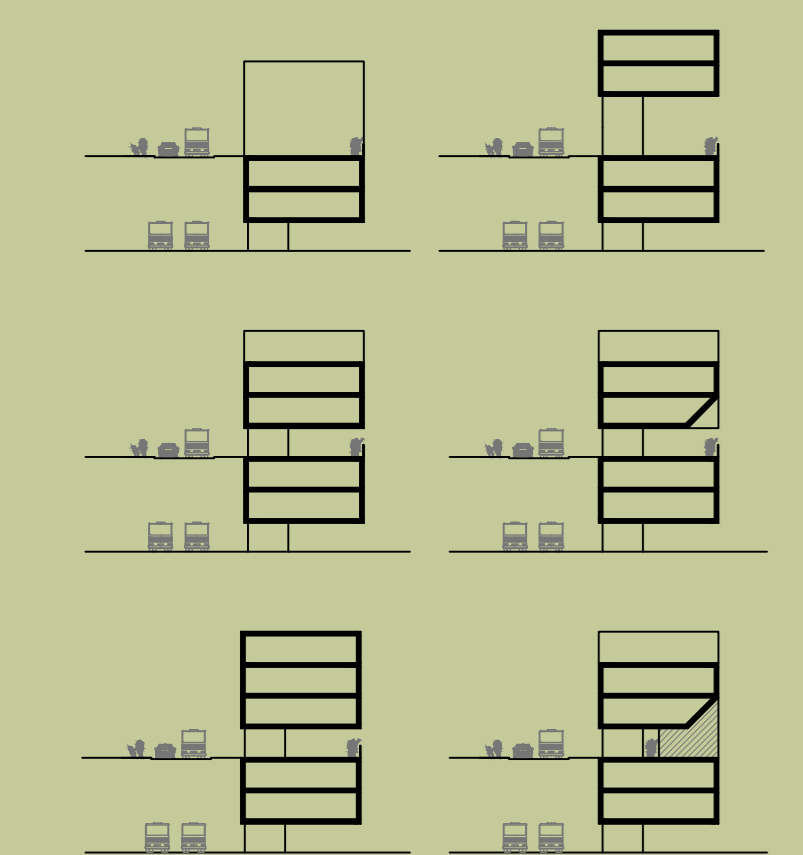
Sarphatistraat Offices, Steven Holl, Amsterdam



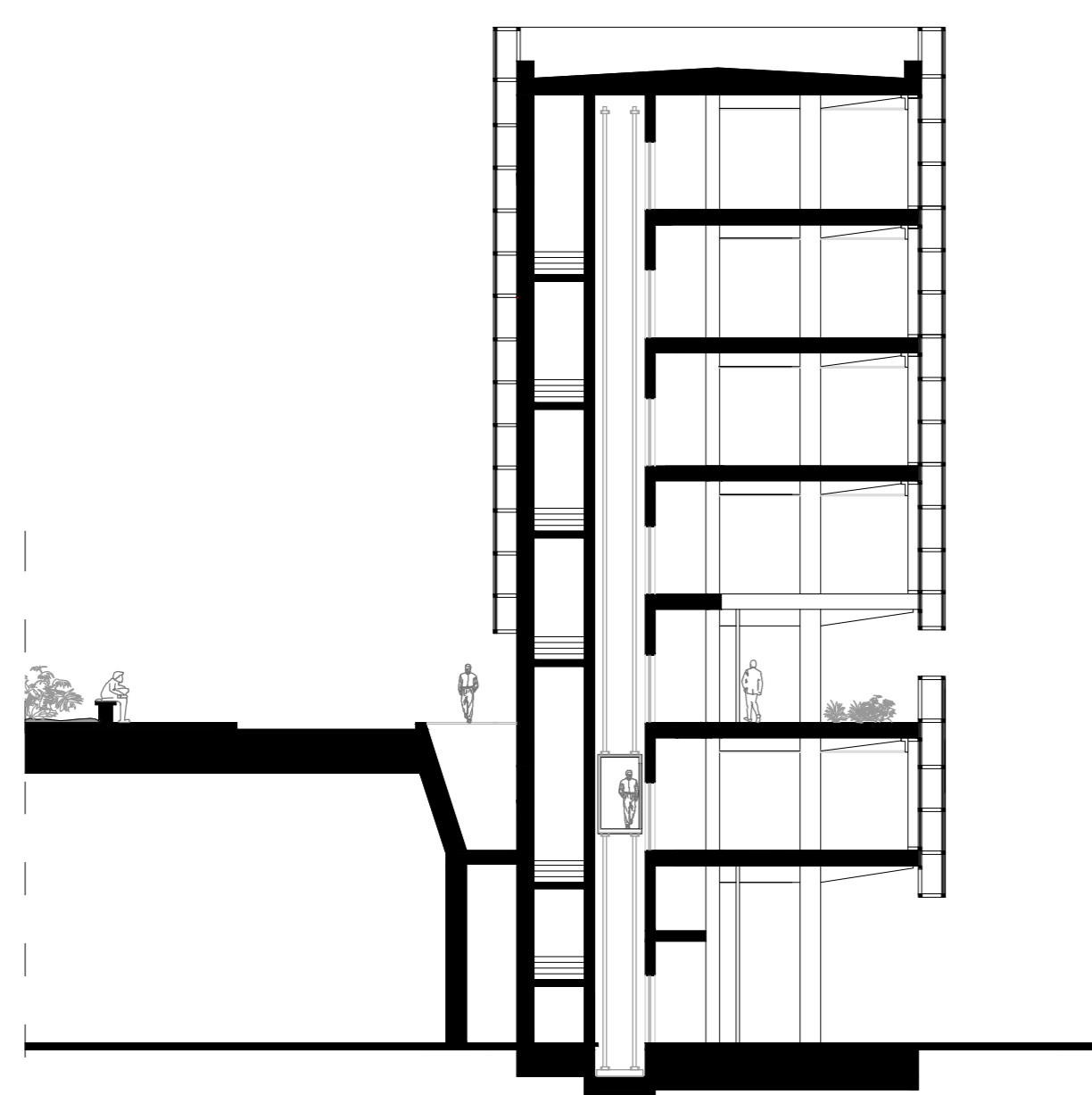
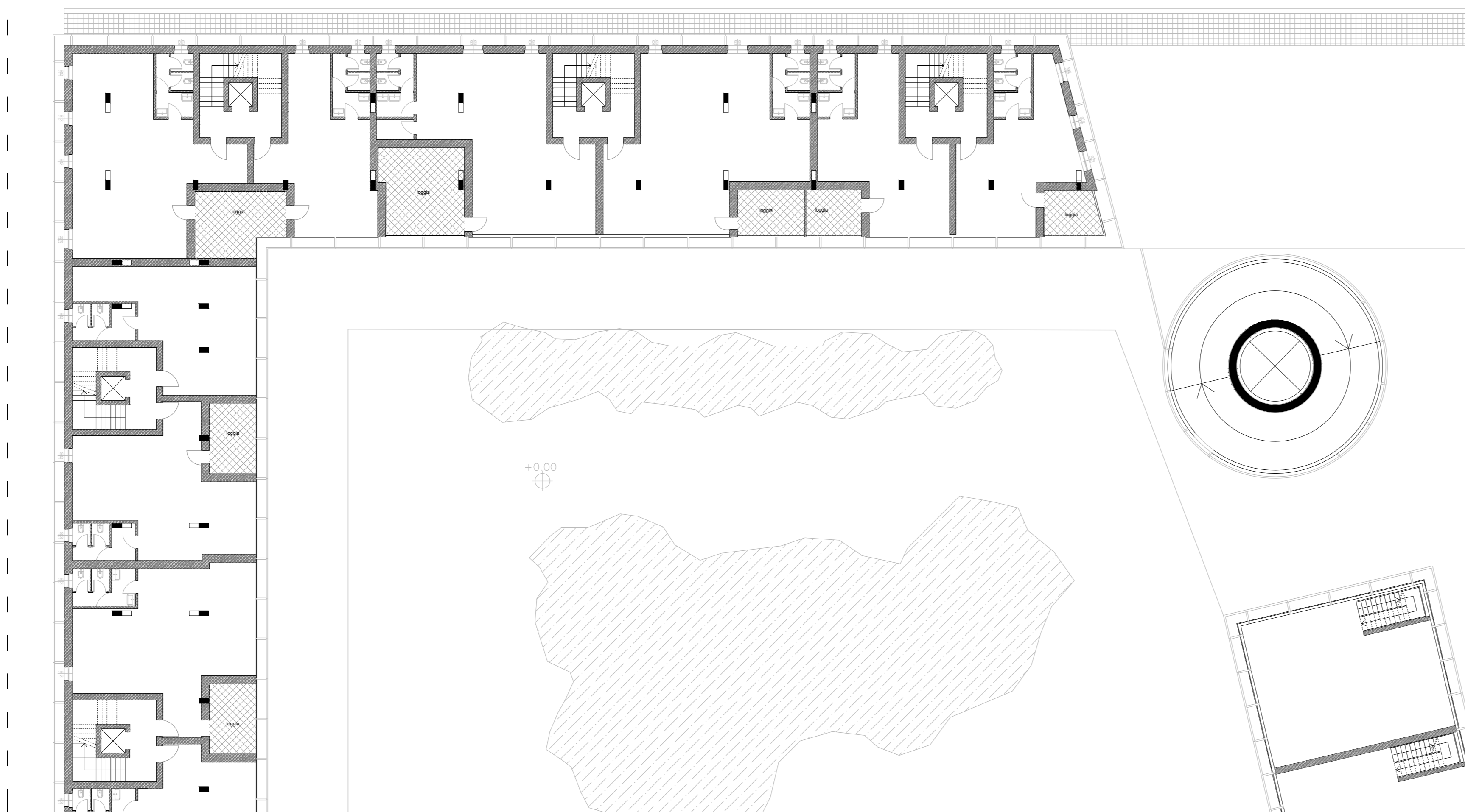
approfondimenti grata



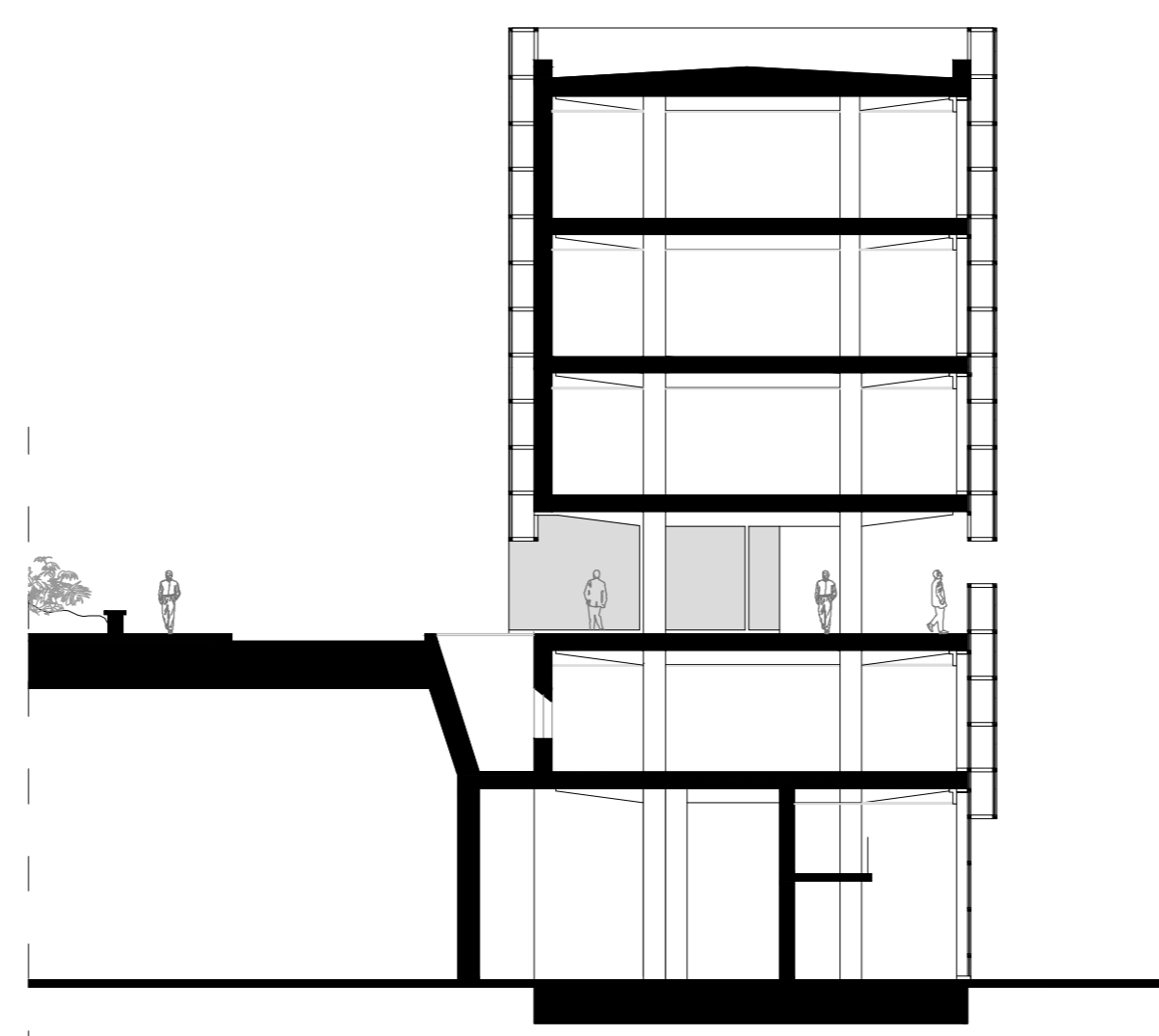
schemi sezione edificio



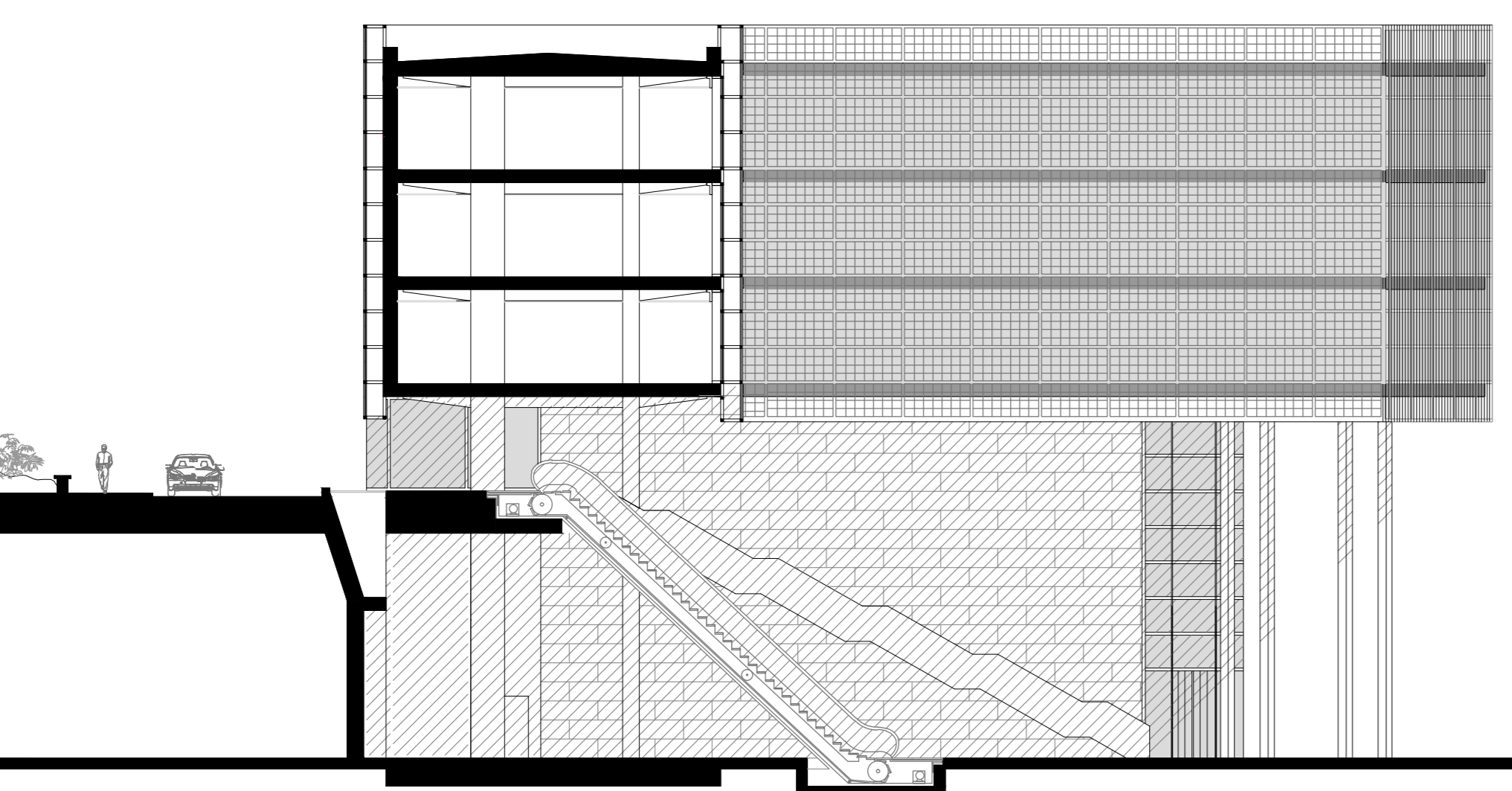
pianta quota 13.30 residenze/uffici 1:200



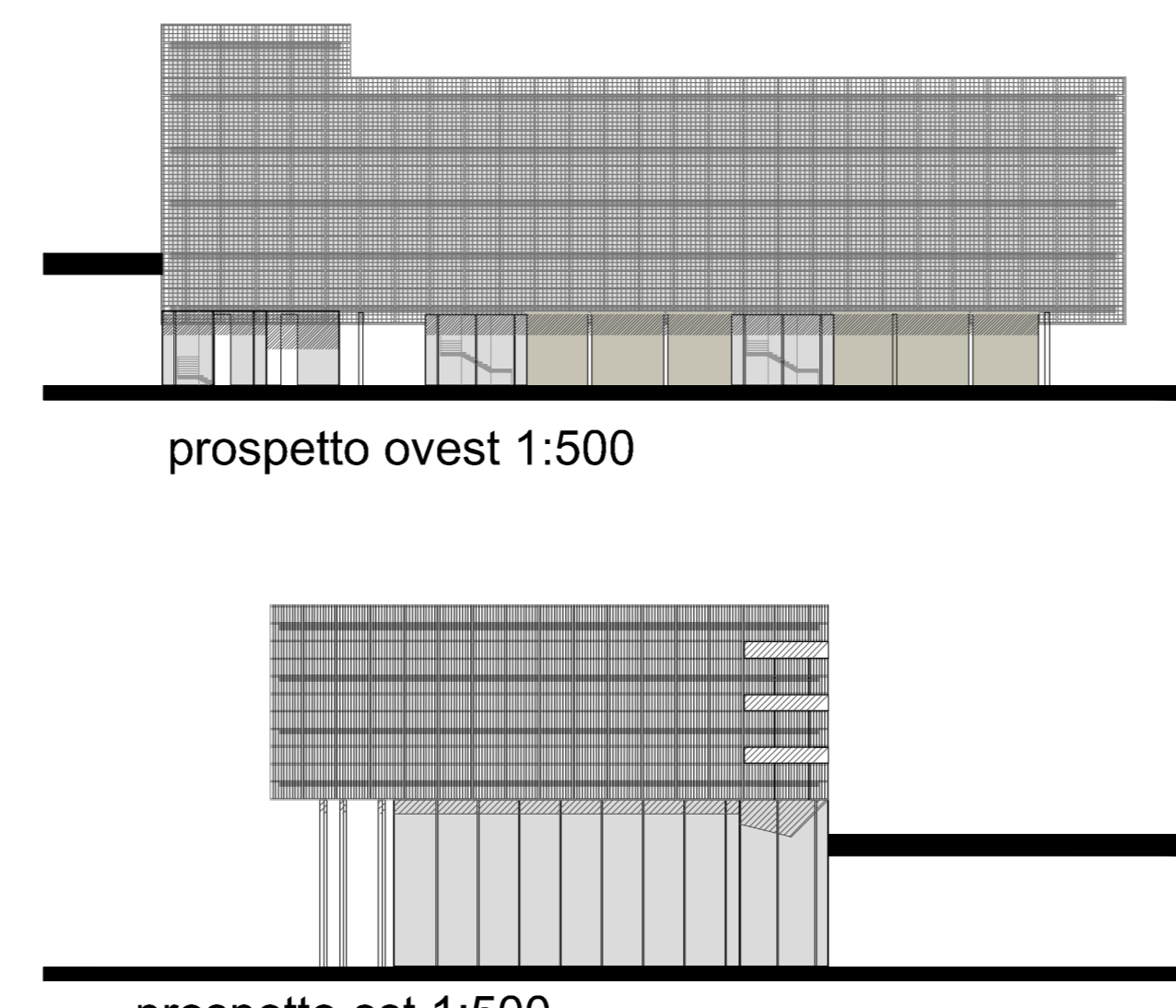
sezione A-A' 1:200



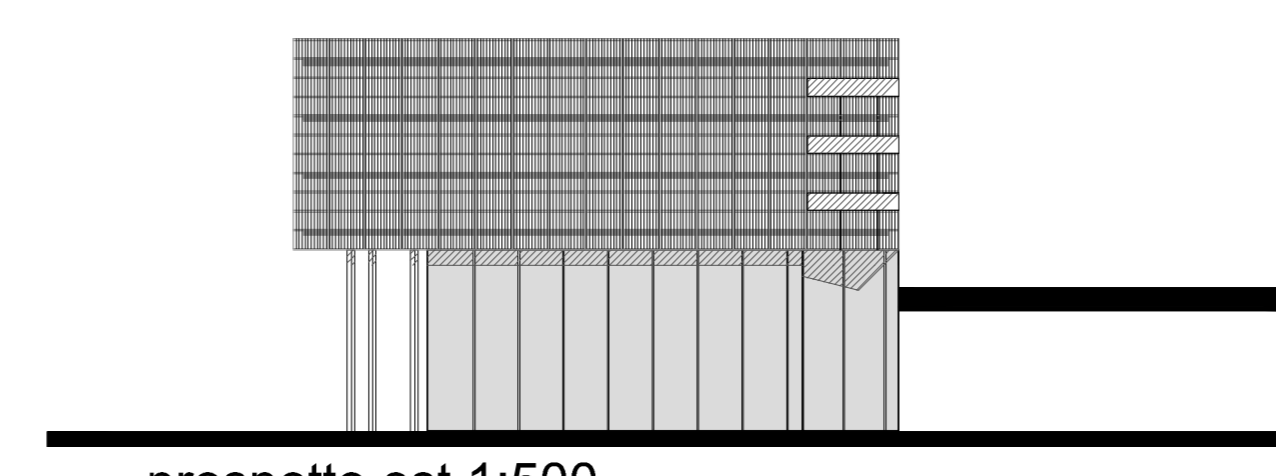
sezione B-B' 1:200



sezione C-C' 1:200



prospetto ovest 1:500



prospetto est 1:500

