

Foto riferimenti



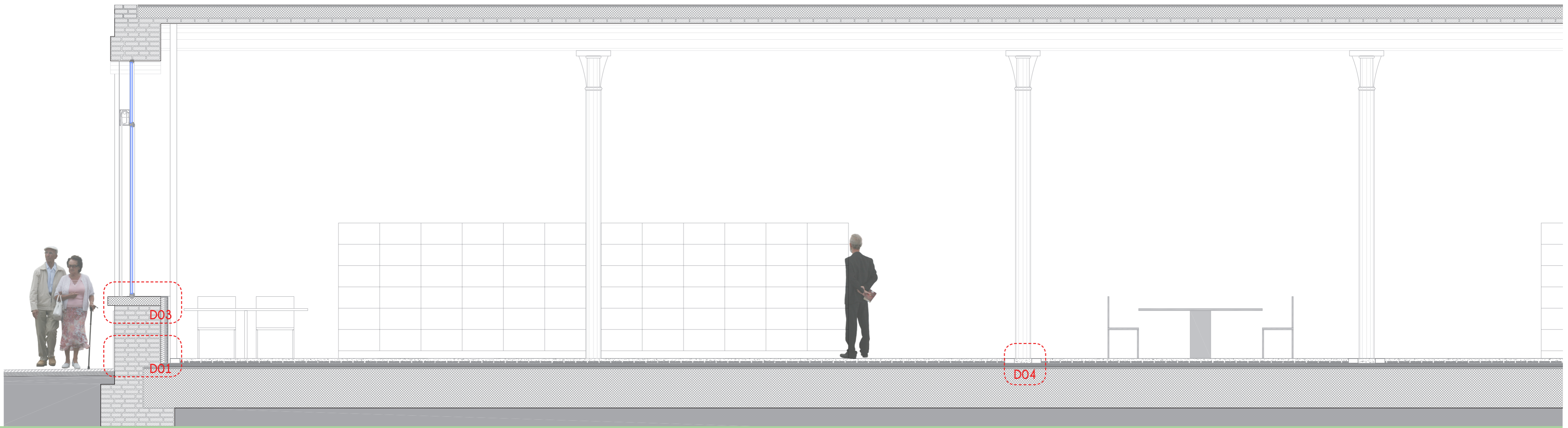
40. Jon S Architects, Kinwood Public Library, 2009. area lettura vicino a parete perimetrale con aperture.

41. Joca & Biancacci, Mediatheque Amnieres, 2007. area consultazione a scaffale aperto.

42. Meyer von Scholten Architects, Biblioteca pubblica di Alcinere, Paesi Bassi 2010. area bambini.

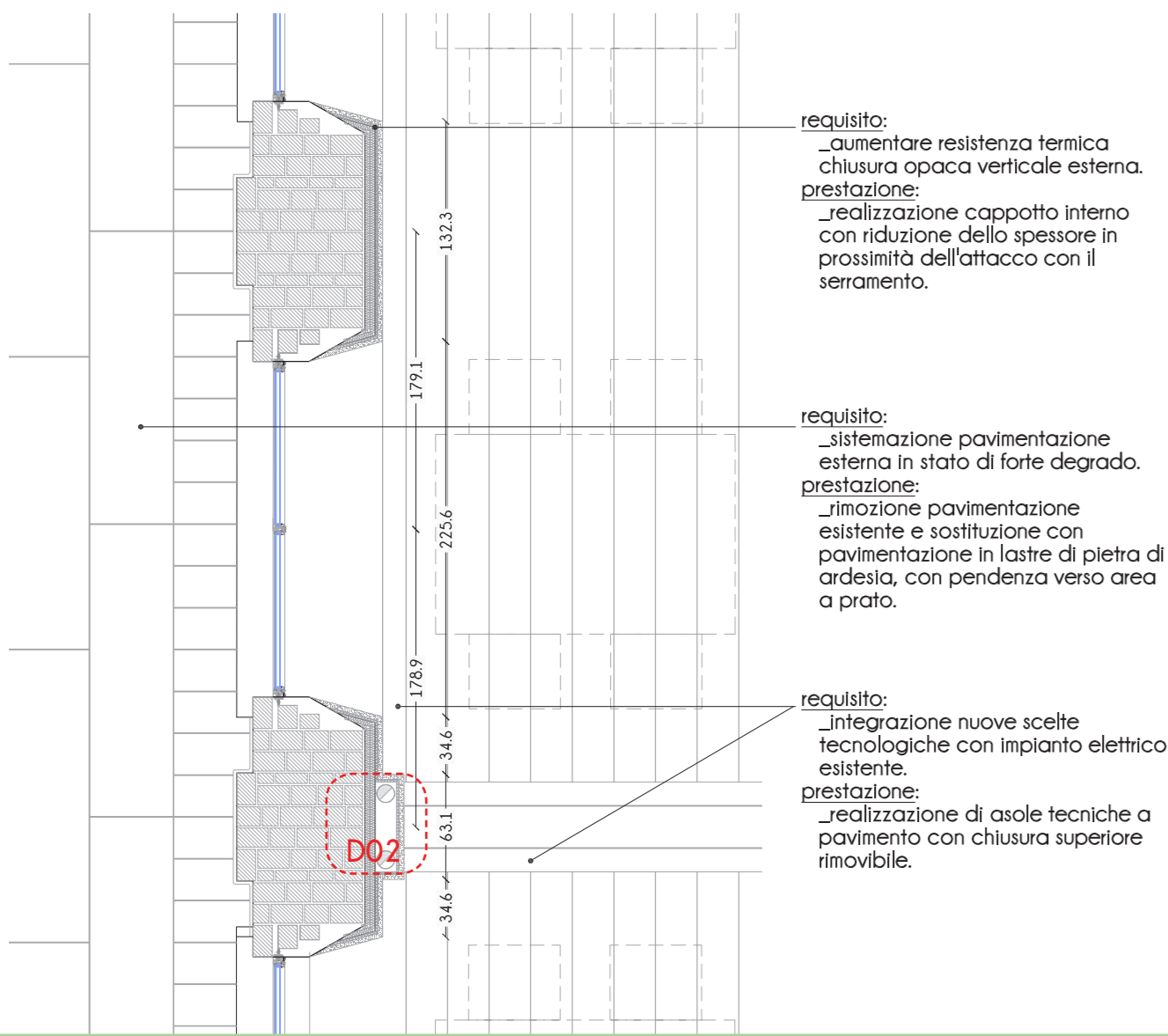
43. Joca Rota, Mediateca Sandro Penna di Perugia, 2004. area a scaffale aperto, postazioni studio.

scala 1:25

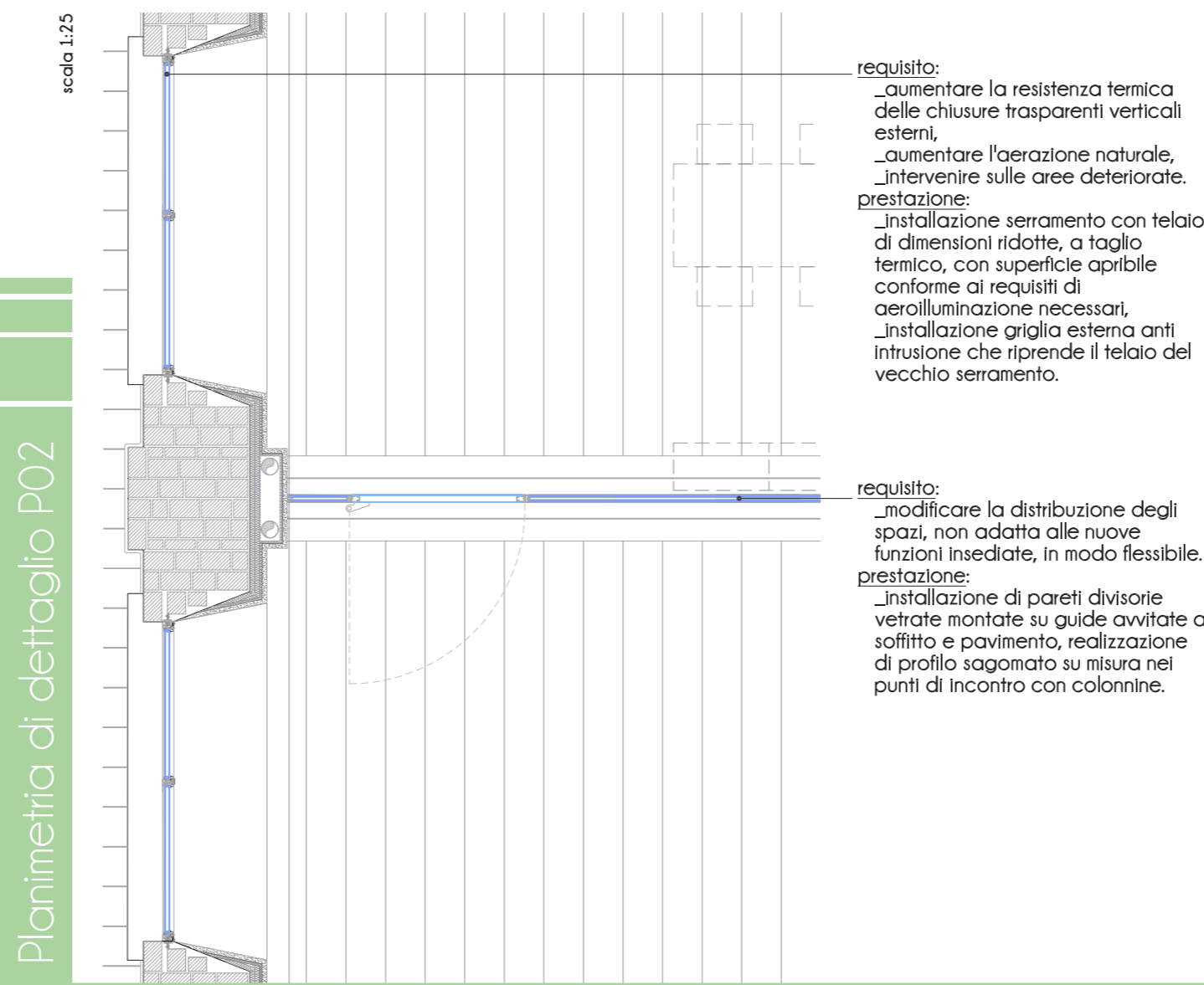


Sezione di dettaglio PT

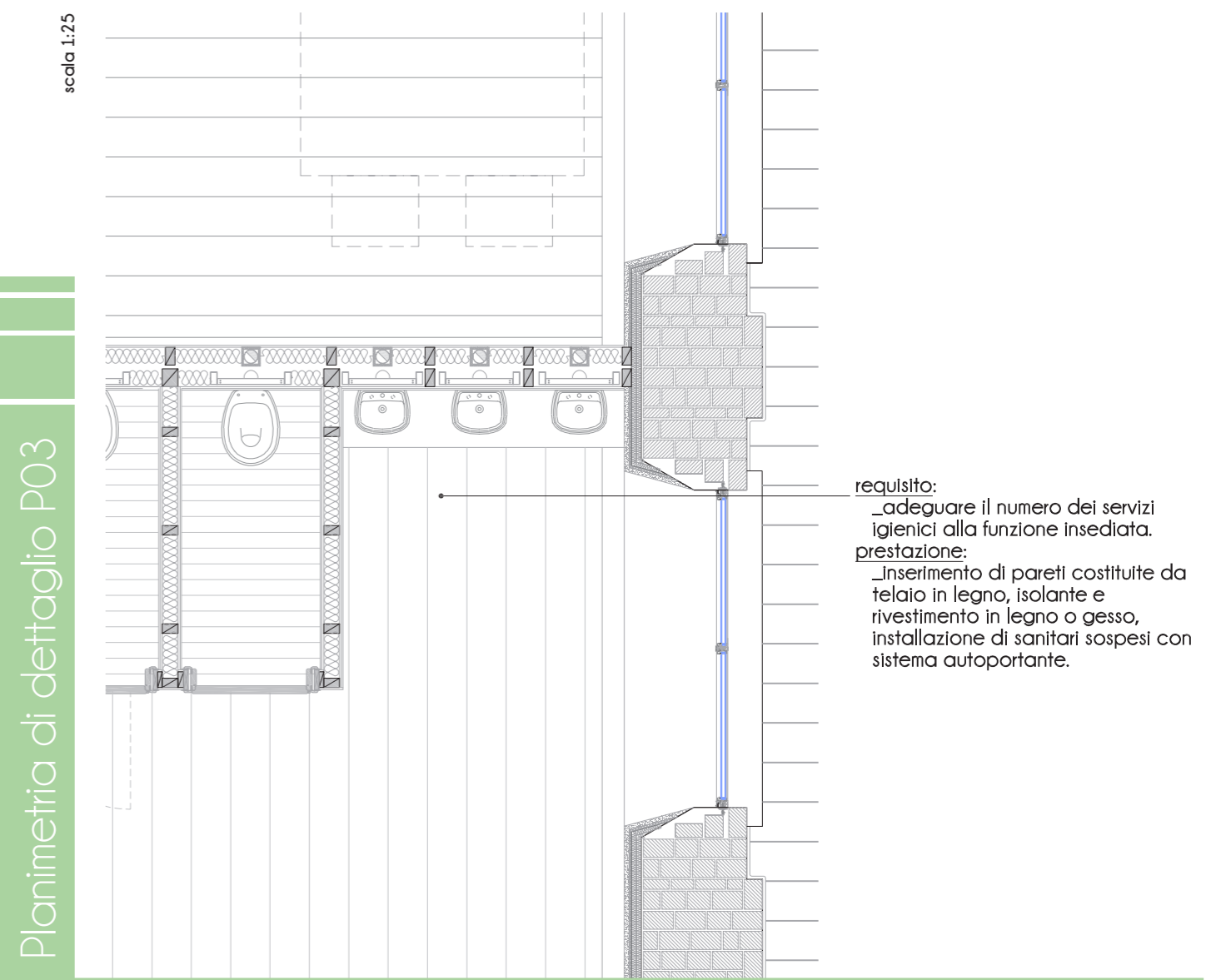
scala 1:25



Planimetria di dettaglio P01

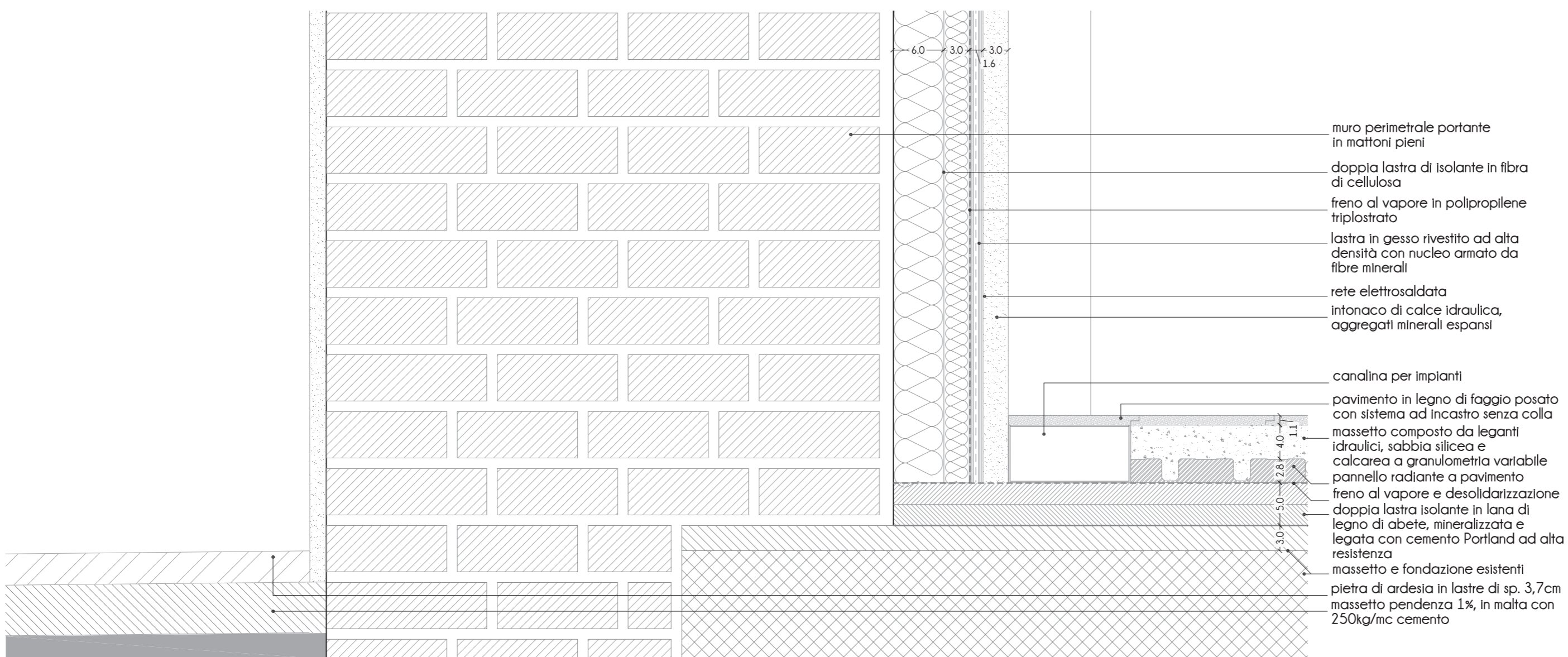


Planimetria di dettaglio P02

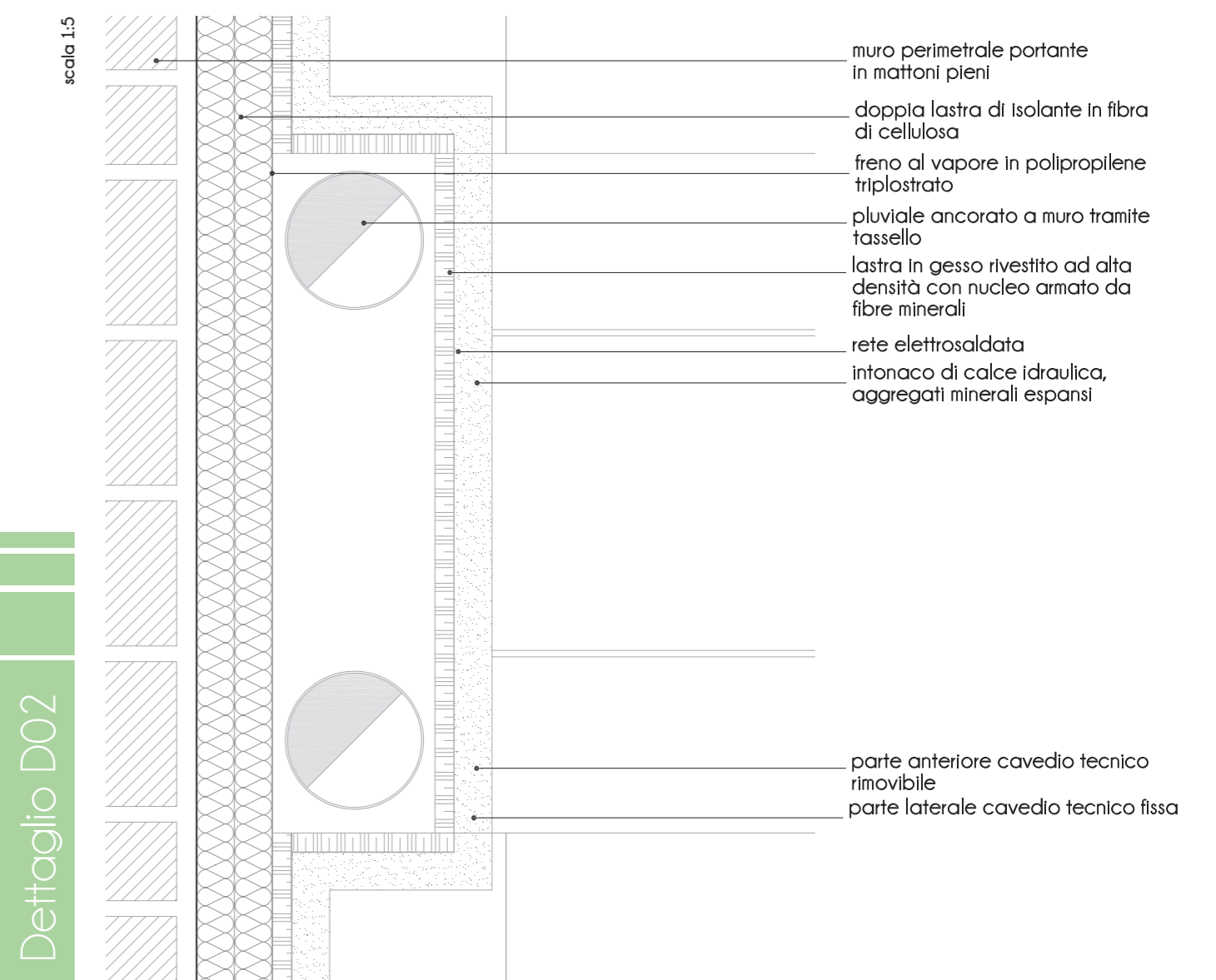


Planimetria di dettaglio P03

scala 1:5

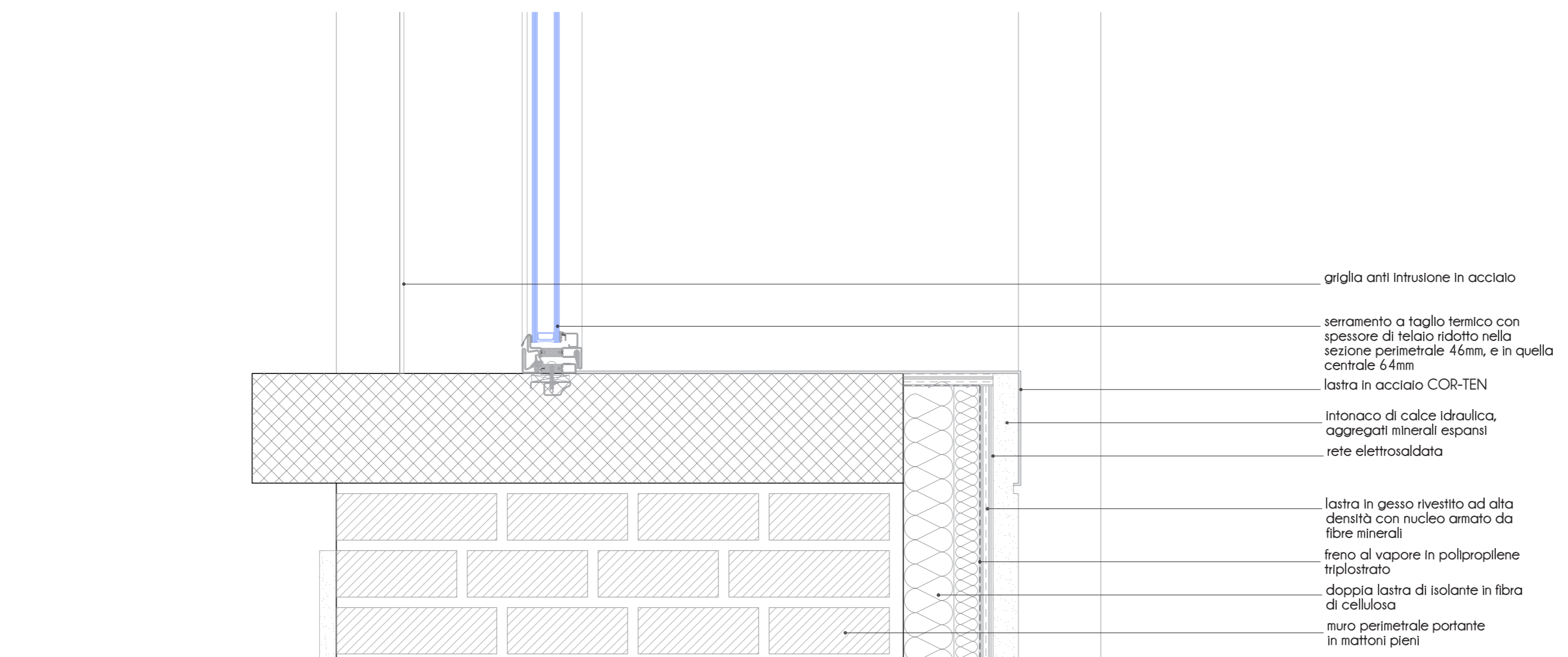


Dettaglio D01

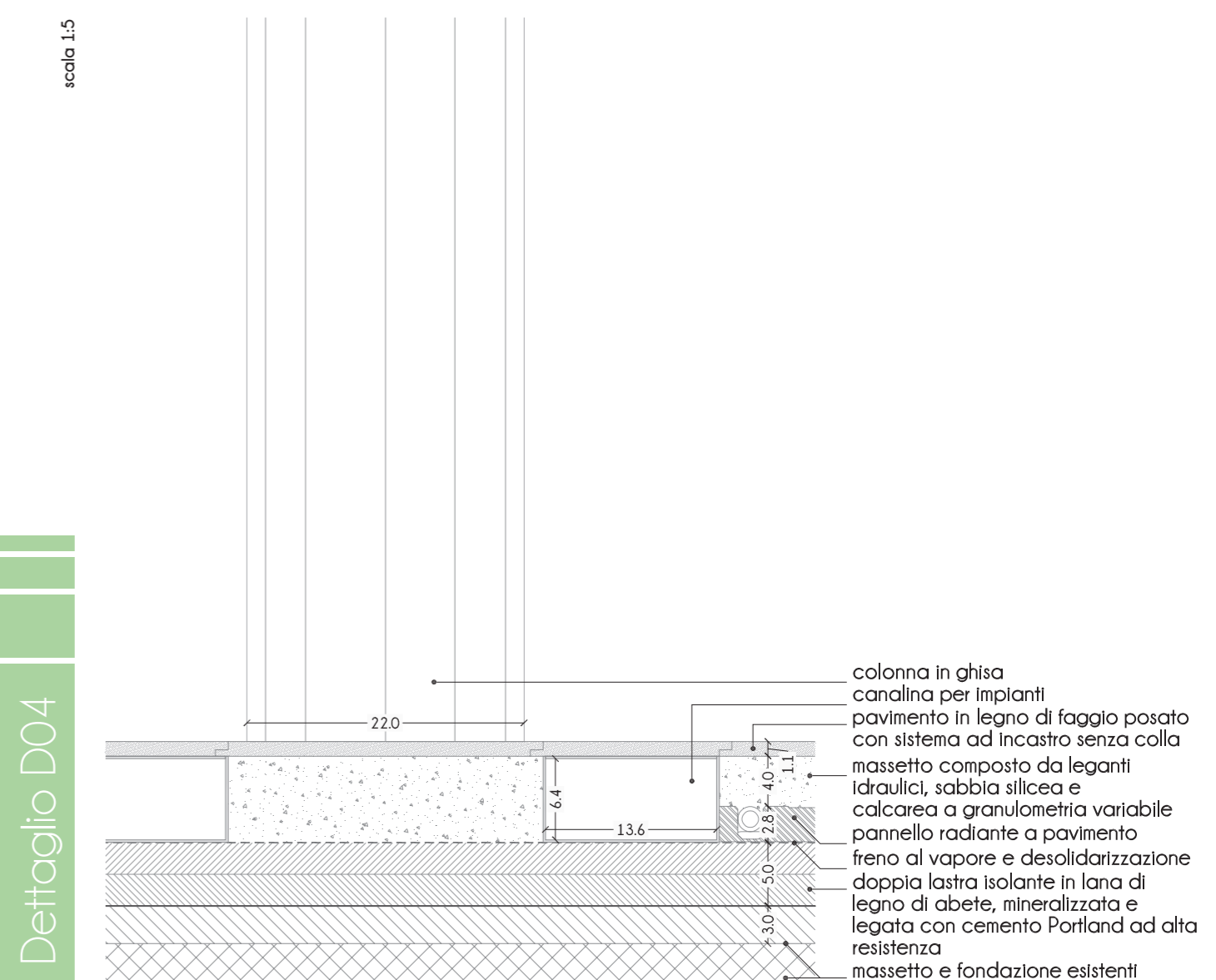


Dettaglio D02

scala 1:5

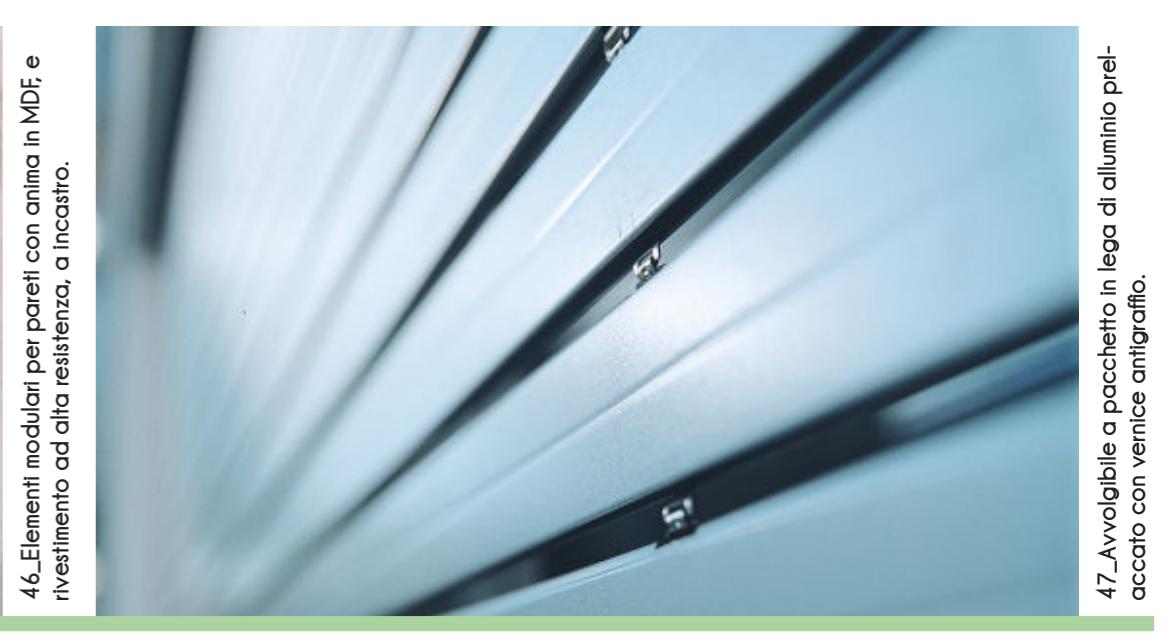
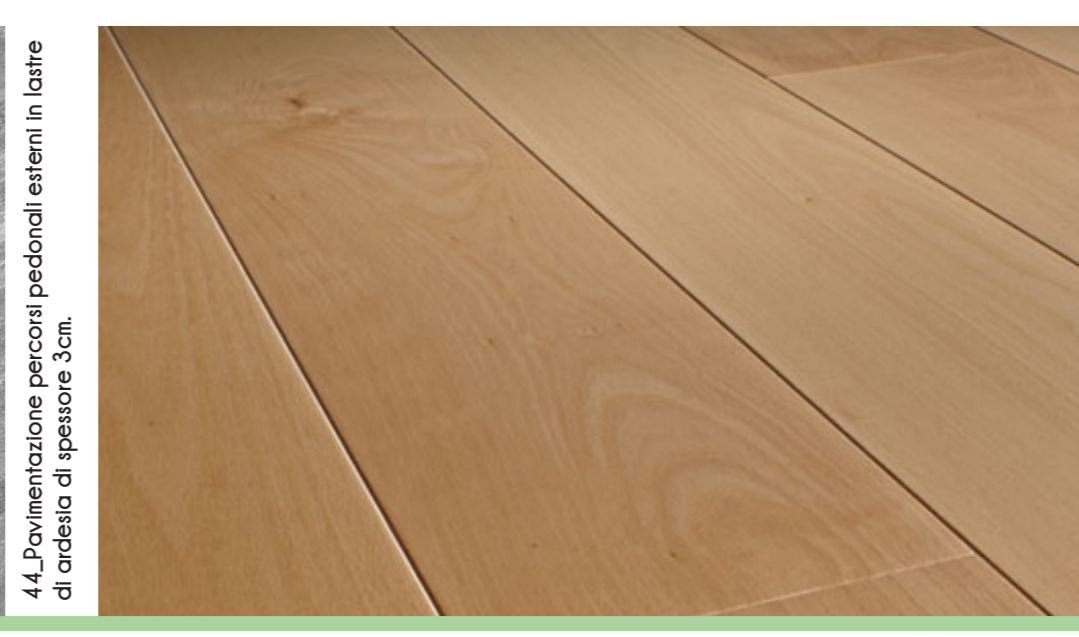
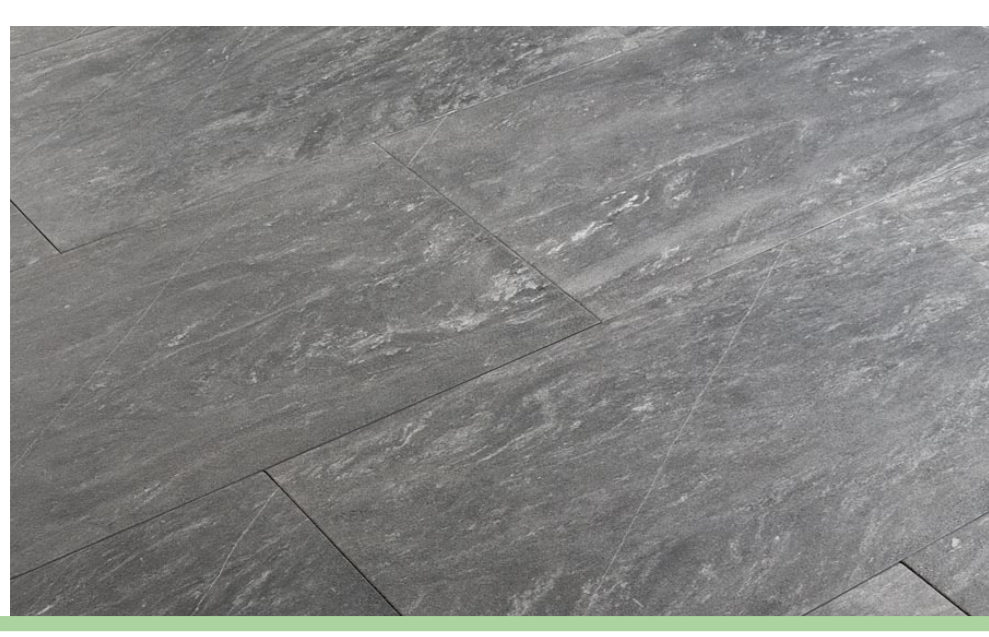


Dettaglio D03



Dettaglio D04

Materiali



44. Pavimentazione percorsi pedonali esterni in lastre di ardesia di spessore 3cm.

45. Pavimentazione biblioteca in legno di faggio sp. 37mm, posato con sistema ad incastro.

46. Elementi modulari per pareti con ancia in MDF e rivestimento ad alta resistenza, a incastro.

47. Avvolgibile a pacchetto in lega di alluminio pre-anodato con vernice anallergica.