

Foto Riferimenti



48\_C2-S Associati\_Scuola Elementare, 2009\_Panzano Veneto\_spaZI comuni separati con pareti vetrate.



49\_I29 Interior Architects\_School 01, 2005\_Amsterdam Olanda\_Paesi Bassi\_spaZIo comune.



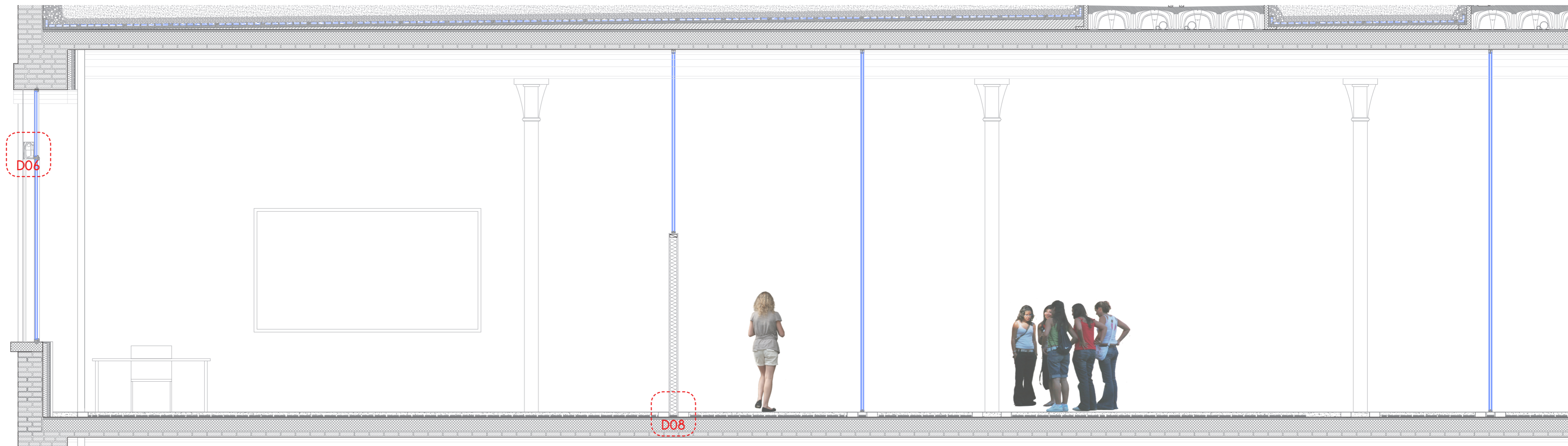
50\_A18 Hapag-Lloyd\_Esplanade, Centre de Formation des Apprentis, 2009\_Saint Mair, Francia\_arena laboratori.



51\_Behnick Architects\_Scuola Patroux, 2004\_Herbrechtingen, Germania\_divisione pannelli legno-vello.

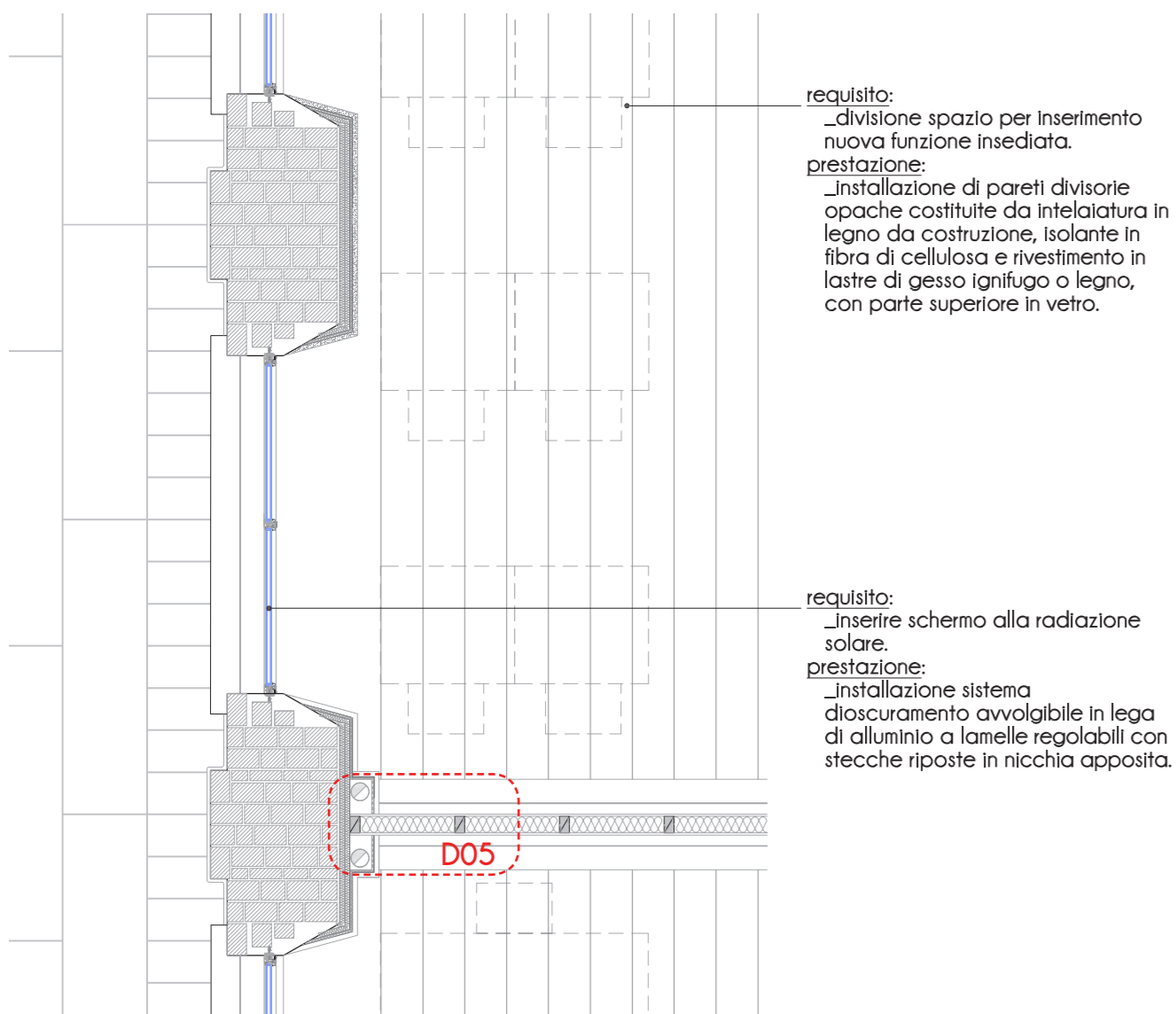
Sezione di dettaglio P1

scala 1:25

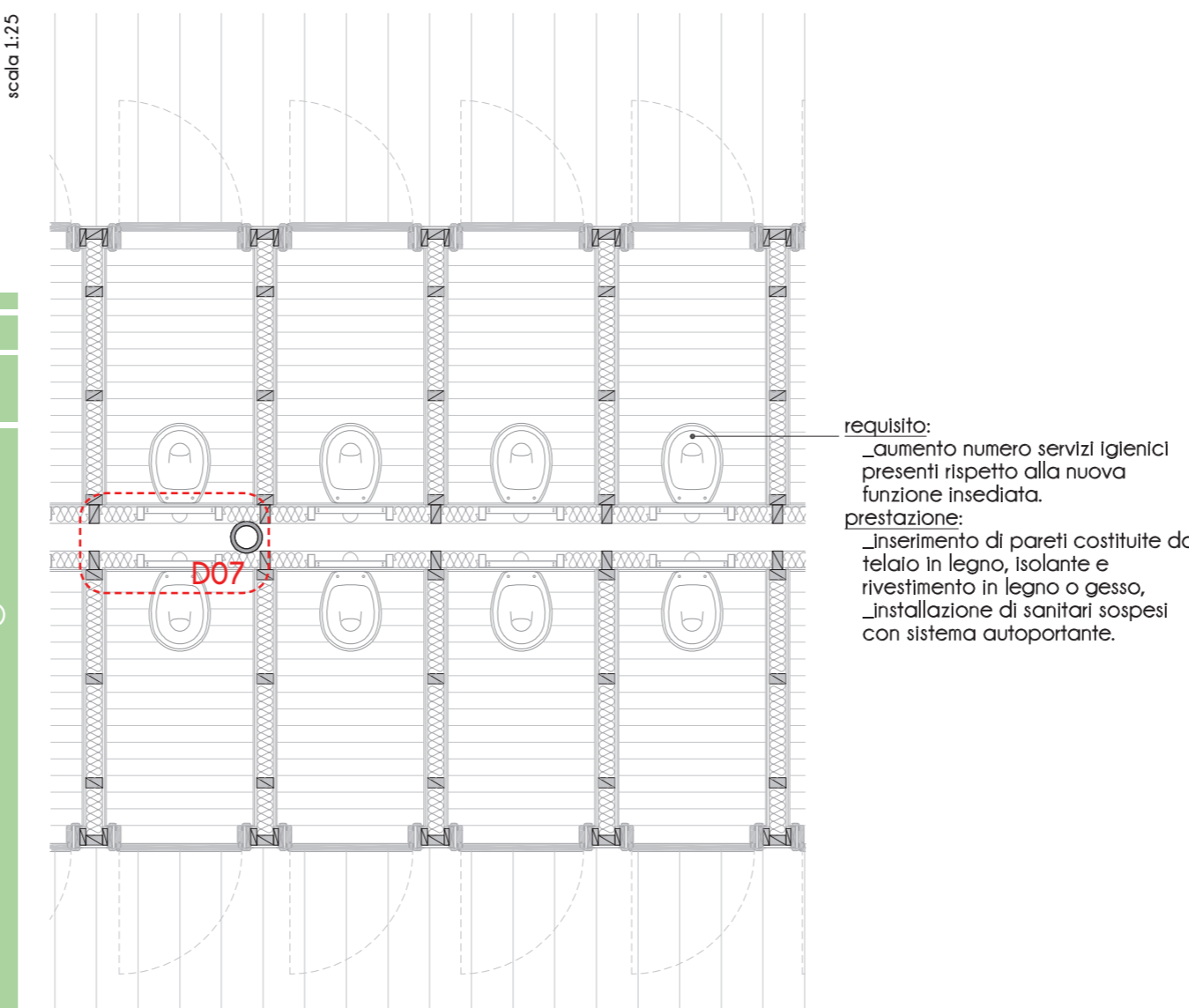


Planimetria di dettaglio P04

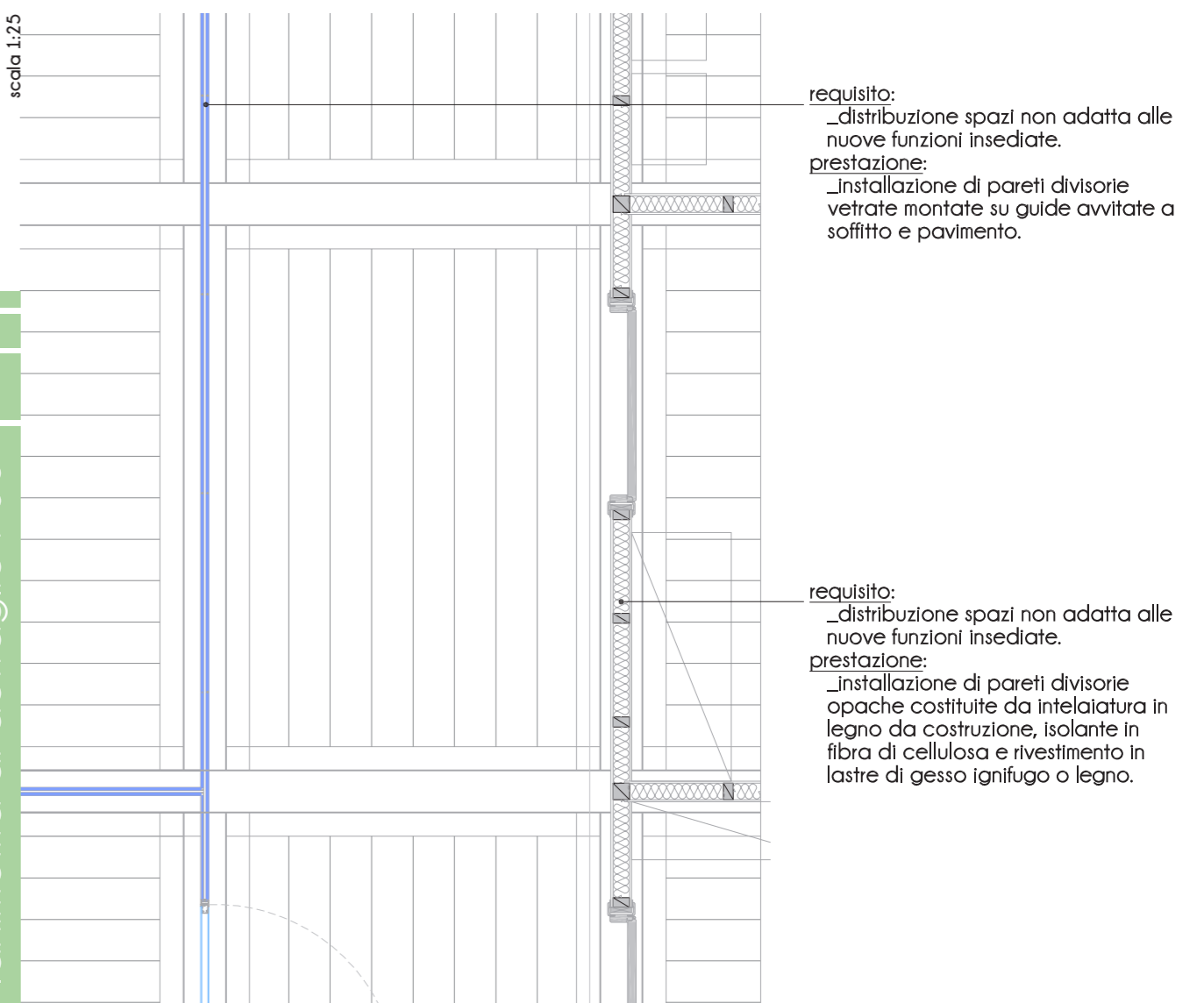
scala 1:25



Planimetria di dettaglio P05

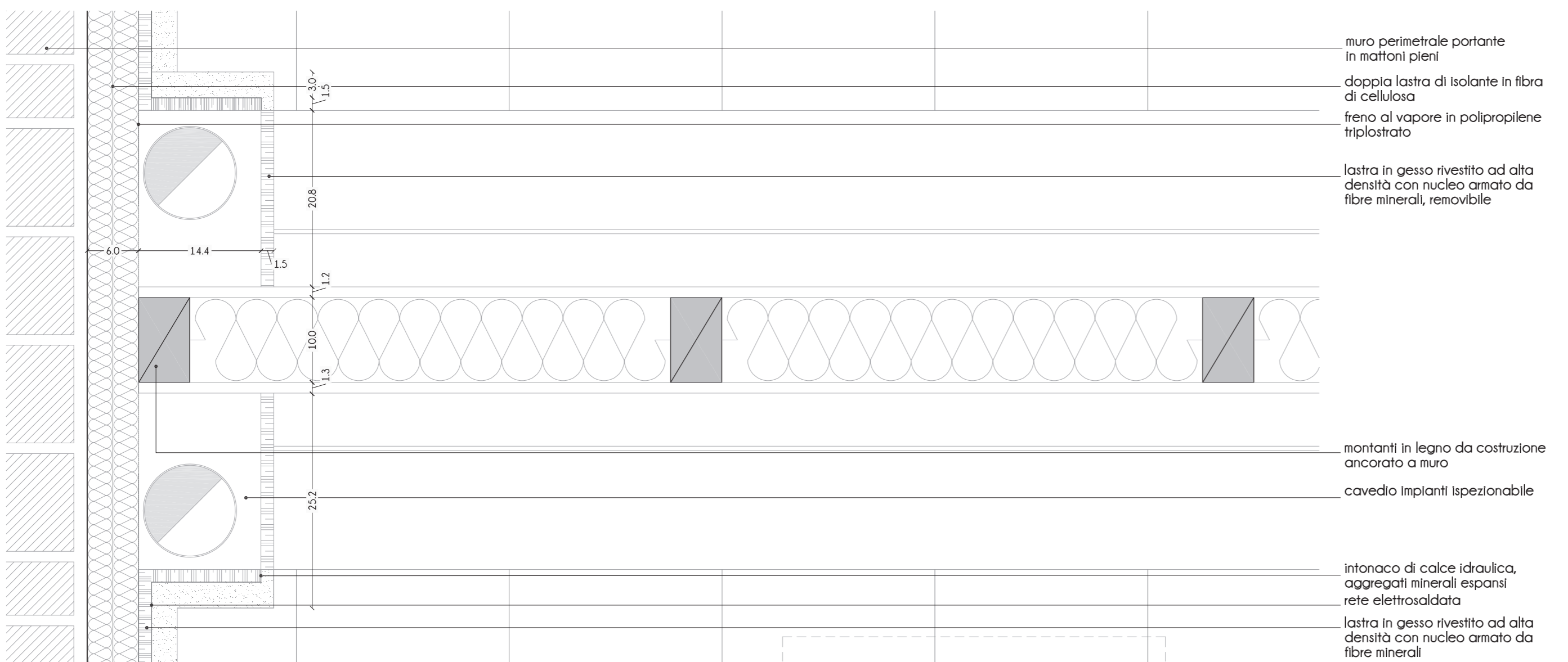


Planimetria di dettaglio P06

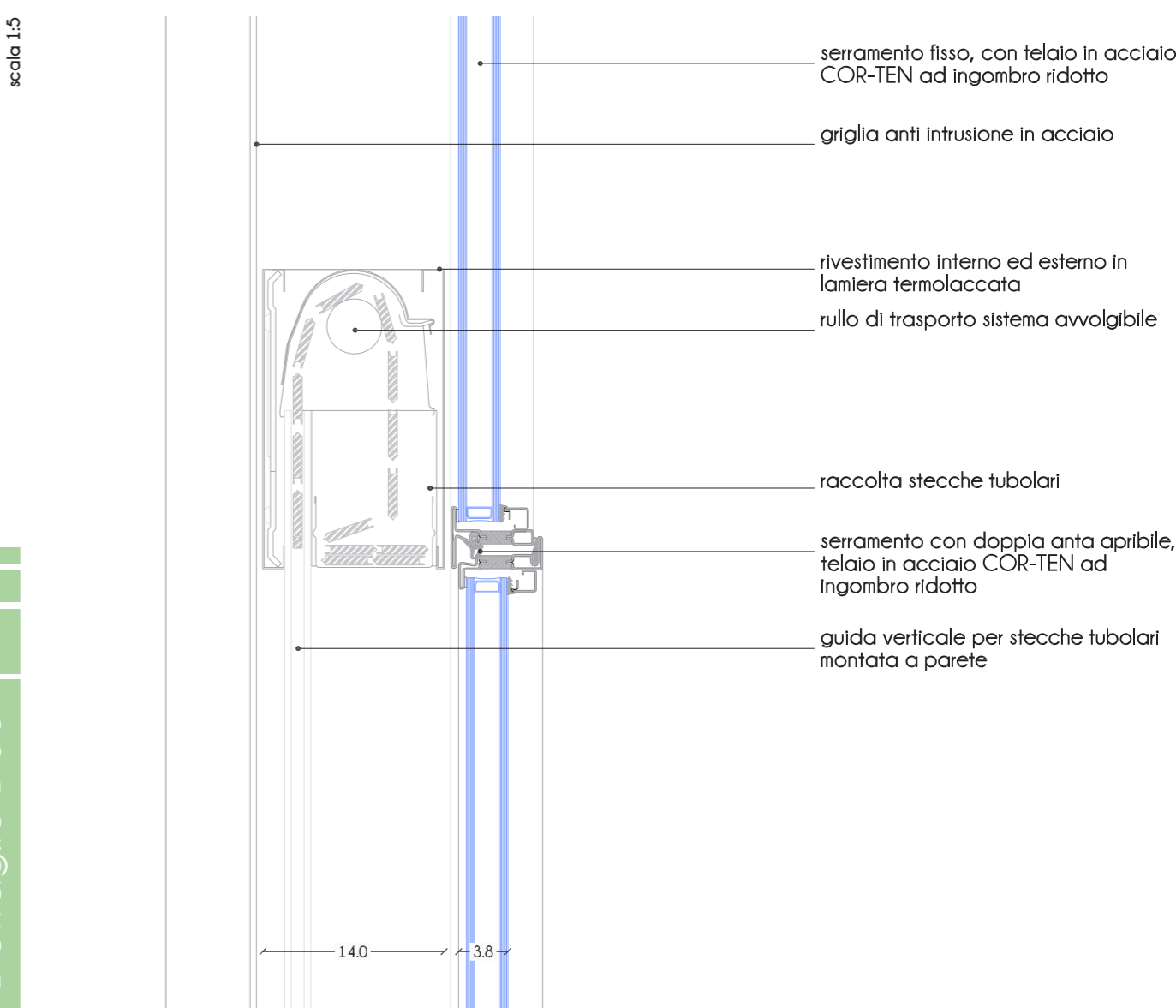


Dettaglio D05

scala 1:5

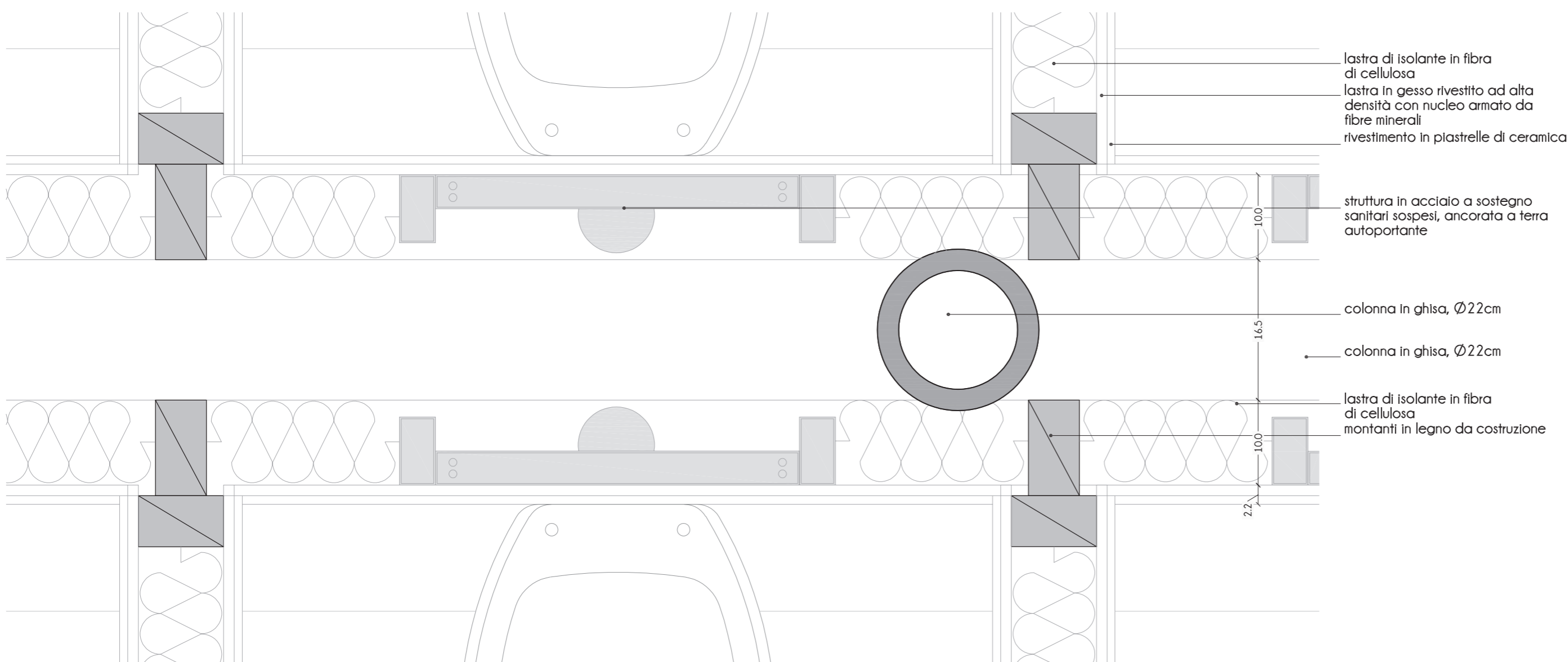


Dettaglio D06

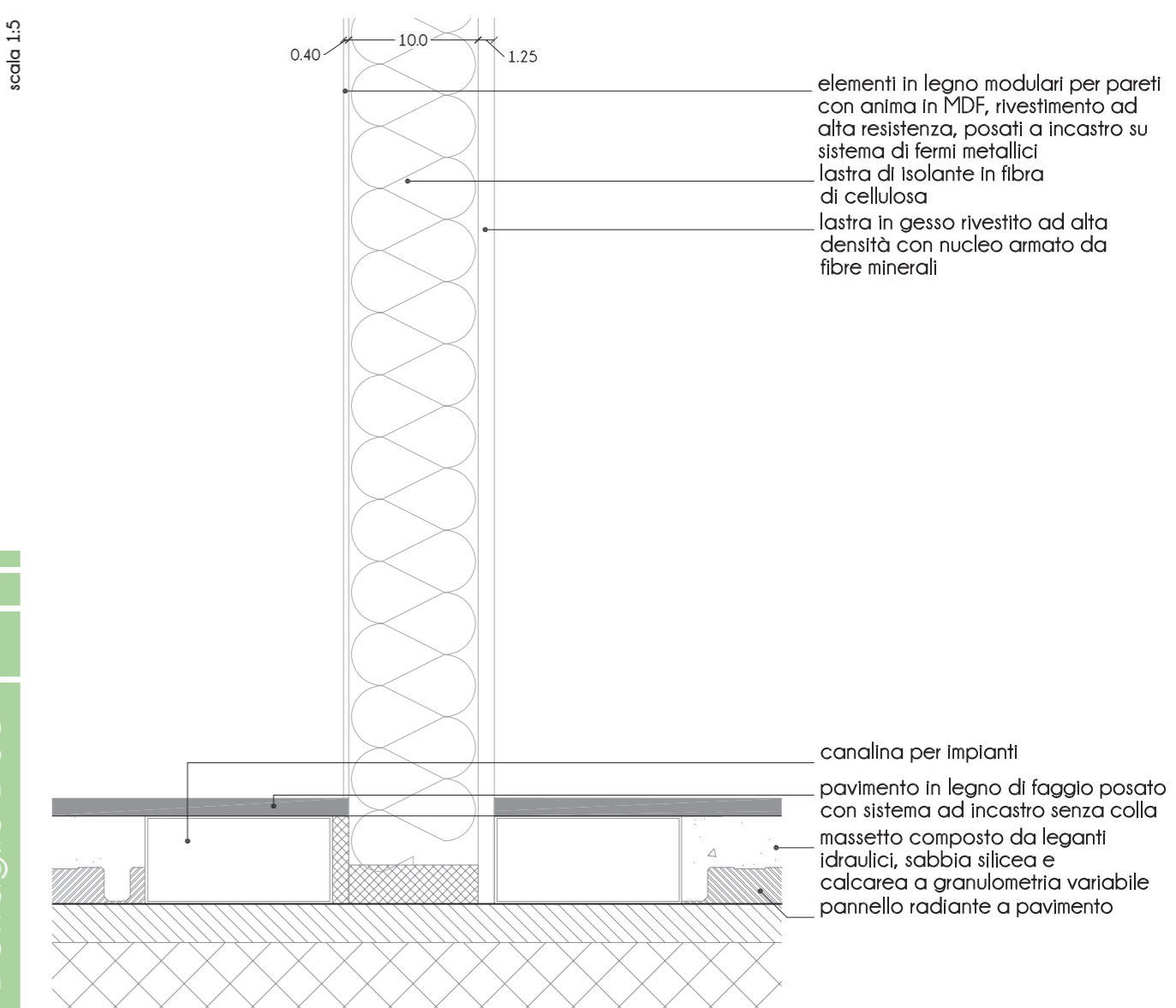


Dettaglio D07

scala 1:5



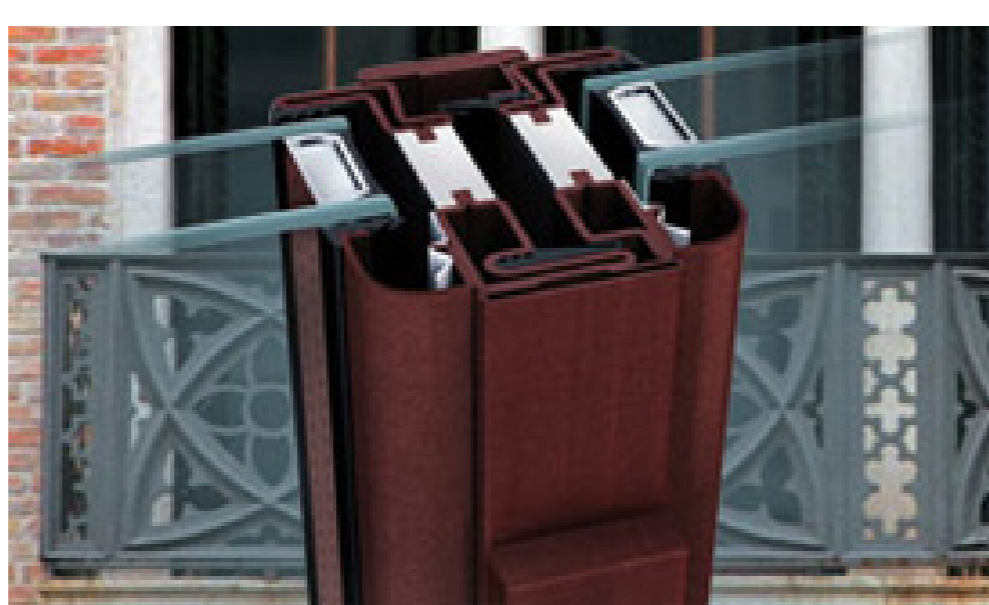
Dettaglio D08



Materiali



52\_Parete modulare in vetro, montata su guide metalliche a pavimento e soffitto.



53\_Seramento in acciaio COR-TEN con telaio a ingombro ridotto.



54\_Sistema autoportante per sanitari, struttura metallica ancorata a pavimento.



55\_Piastrelle in ceramica per rivestimenti pareti e pavimenti bagni e infermeria.