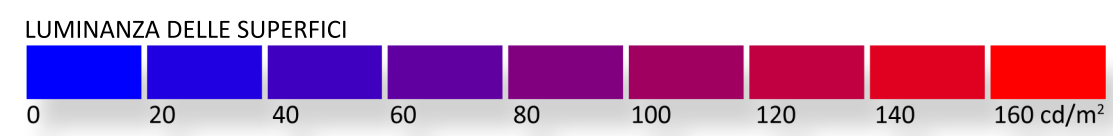
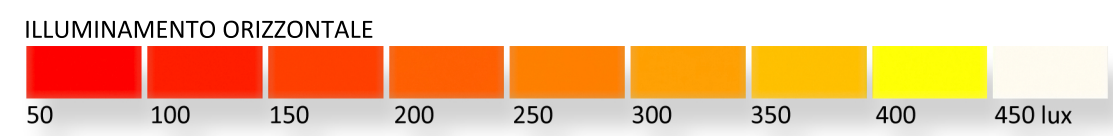
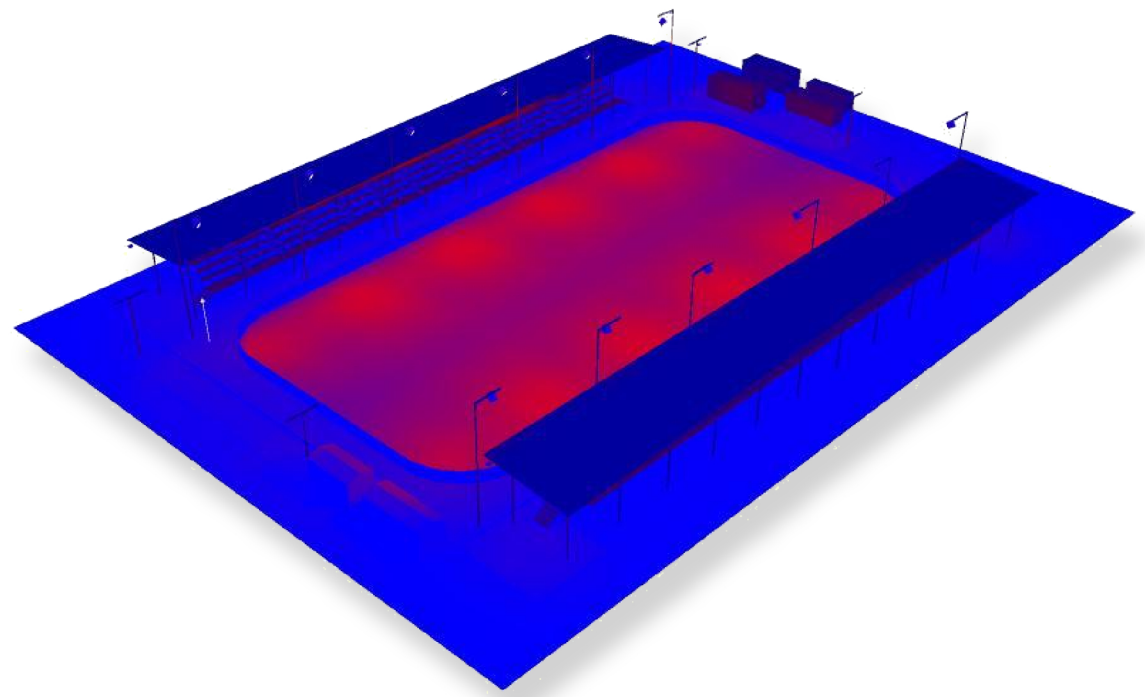
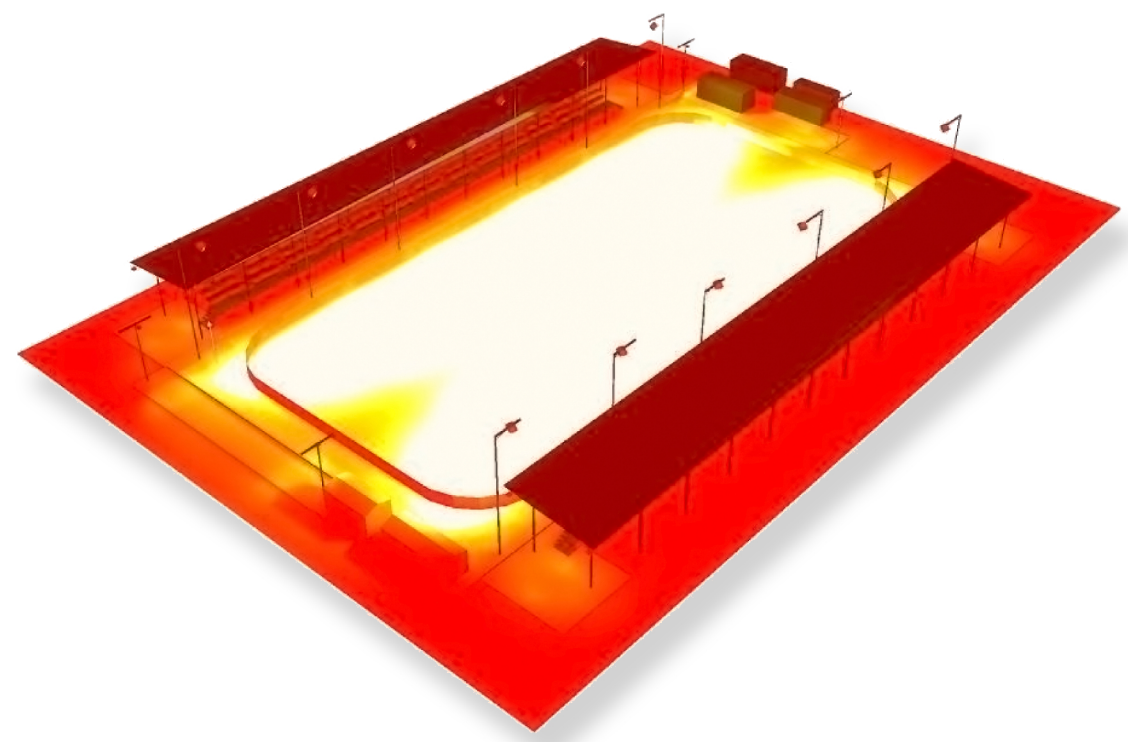


- 533 lx
- 181, 206, 221, 217, 208 lx
- 260 lx
- 201 lx
- 349 lx
- 301 lx



Impianto di riferimento a ioduri metallici: calcolo illuminotecnico

ILLUMINAZIONE A LED PER LO SPORT:  
Confronto fra tradizione e nuove tecnologie applicate ad una pista di ghiaccio temporanea  
Relatore: Prof. Ing. Ruggero Guanella  
Correlatore: Arch. Francesco Marelli

Andrea Rovati  
n° 182409

Politecnico di Milano  
Facoltà di Architettura  
Campus Leonardo  
A.A. 2009-2010