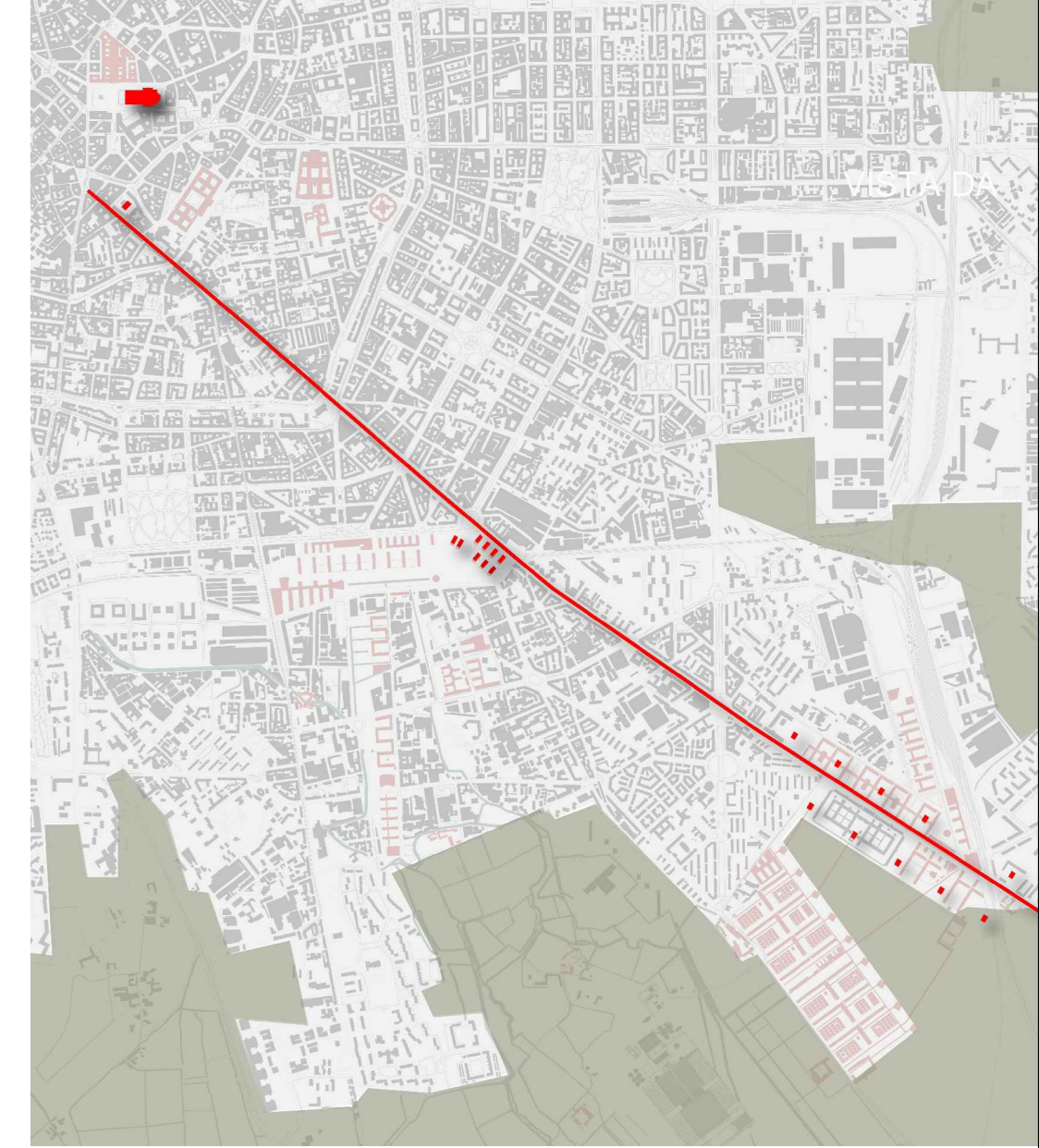
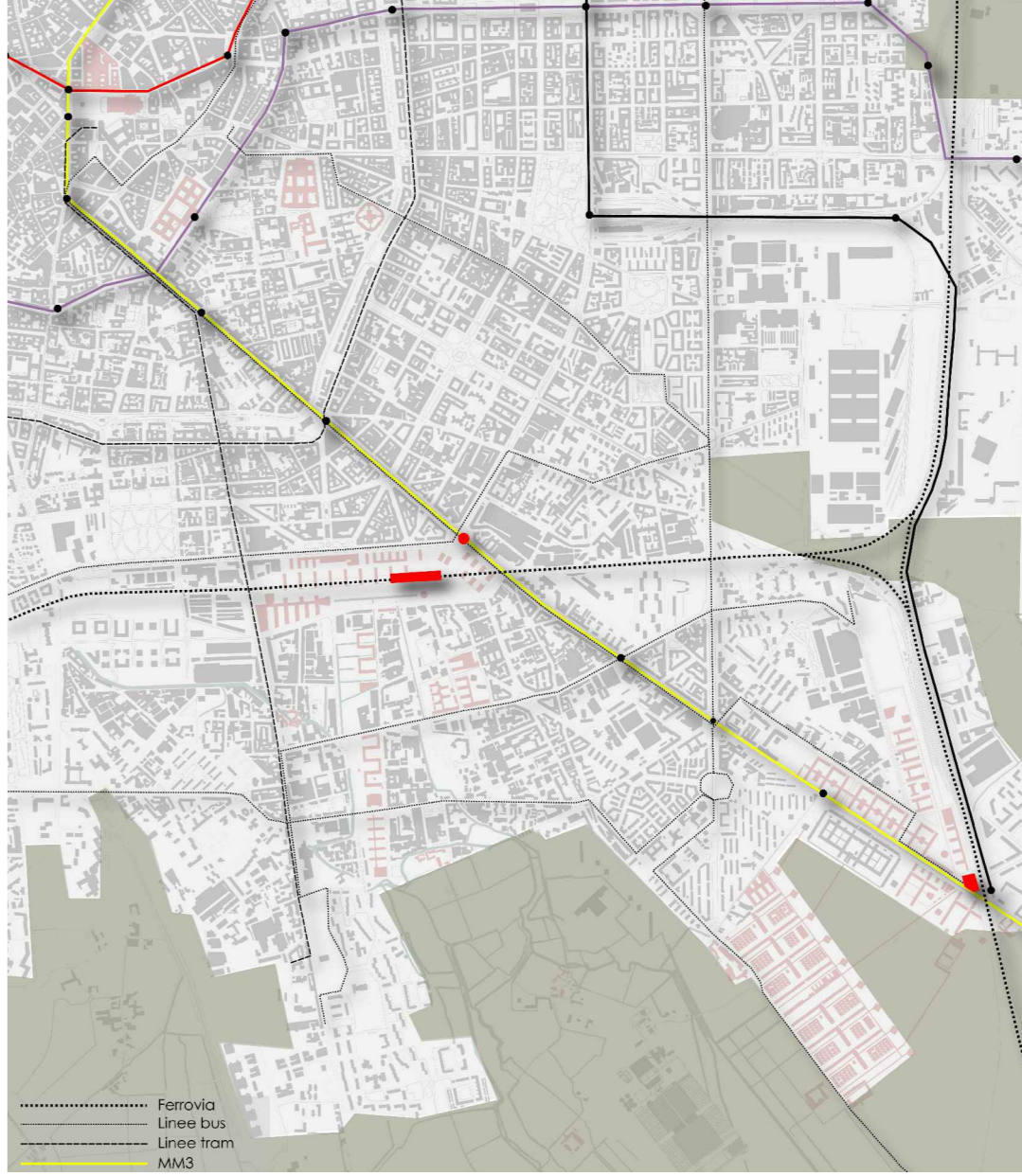
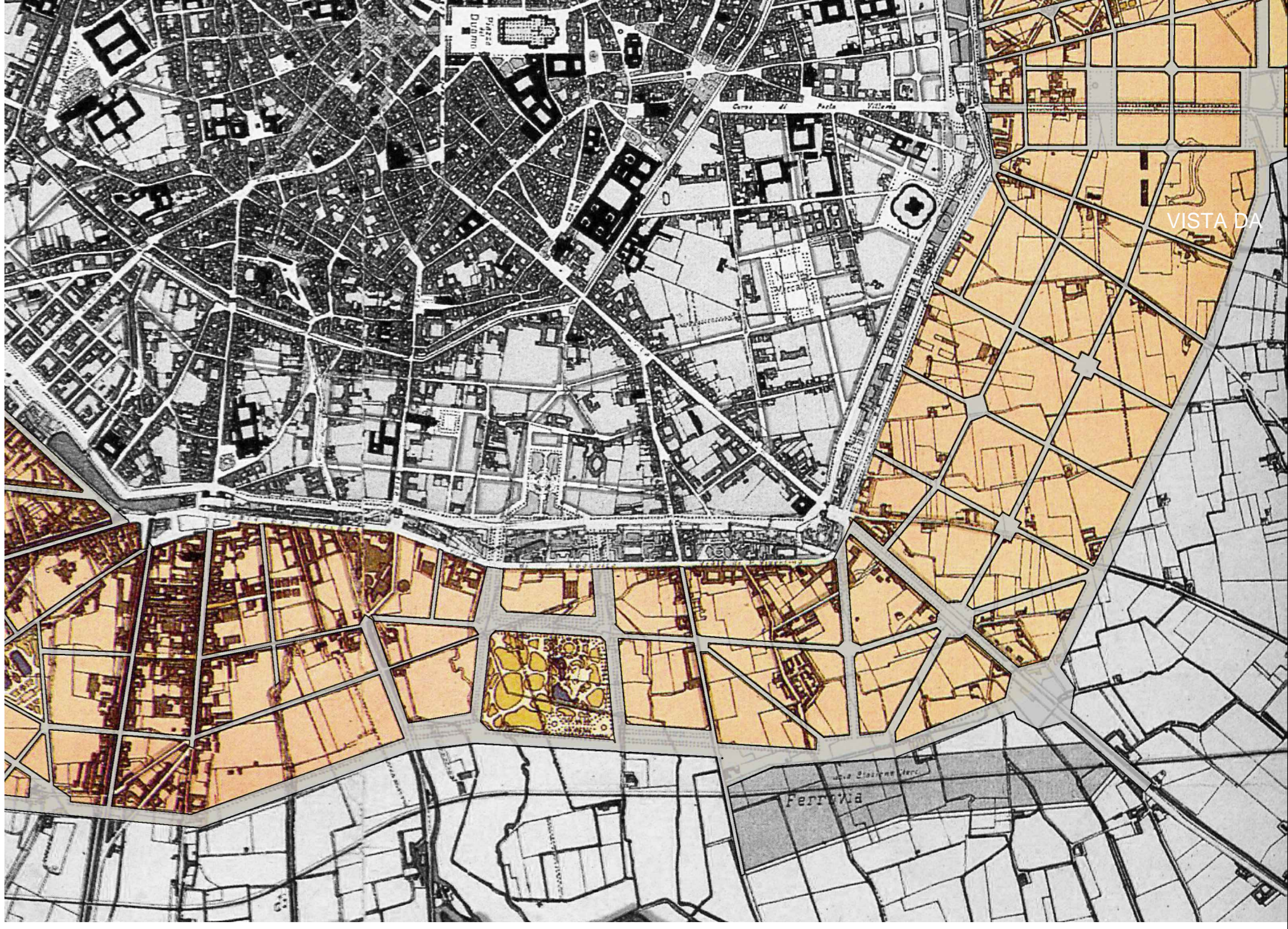


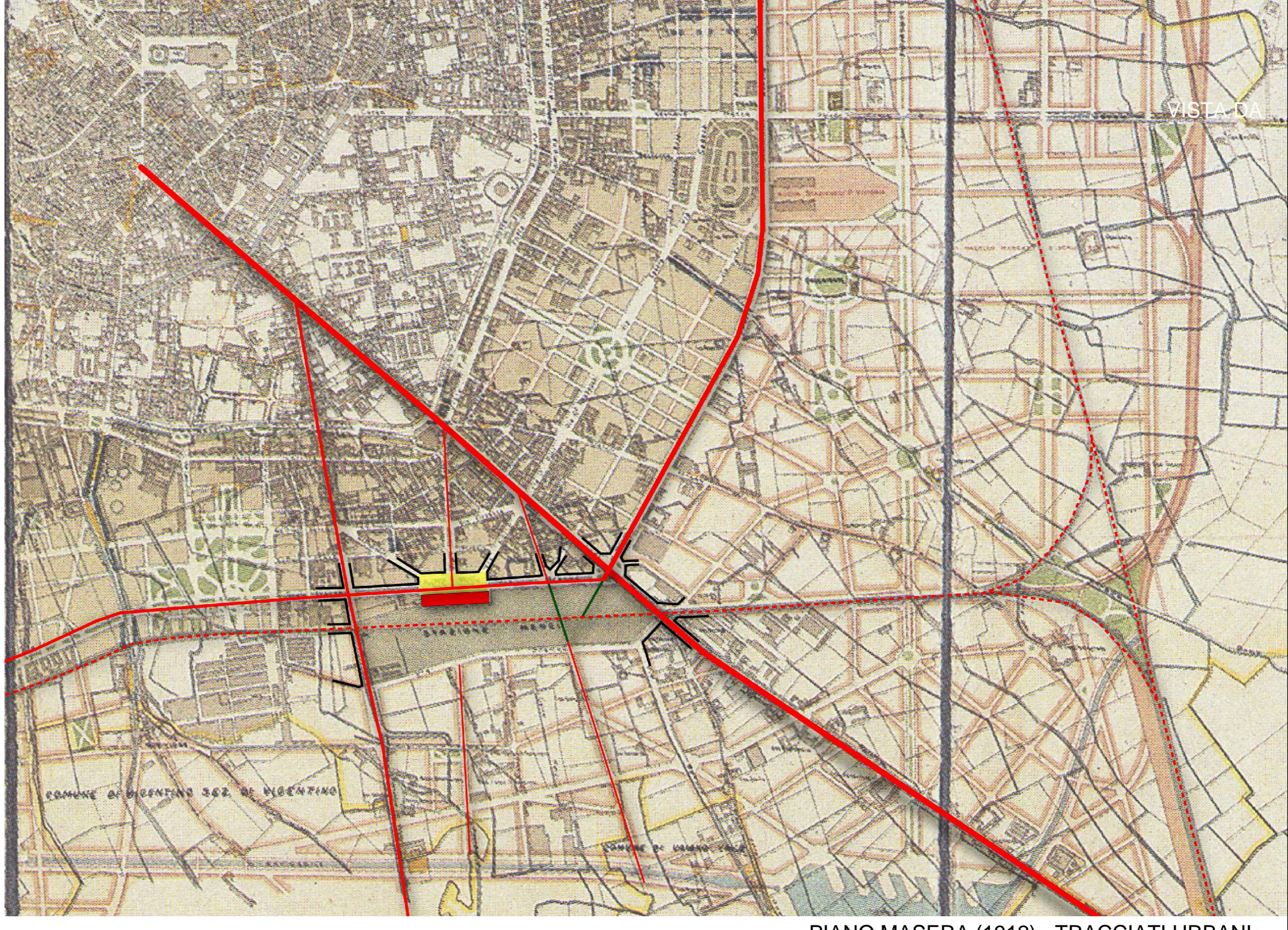
ANTICHI SISTEMI DELLE ACQUE E POSSIBILE RELAZIONE CITTA' CAMPAGNA



QUADRO INFRASTRUTTURALE E SISTEMA DEGLI EDIFICI ALTI



PIANO BERUTO (1884-85) - TRACCIATI STRADALI



PIANO MASERA (1912) - TRACCIATI URBANI

MILANO - PORTA ROMANA
EDIFICI RESIDENZIALI E PER UFFICI

PIANO
1 : 5000
TAVOLA 1