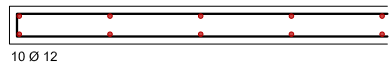


11

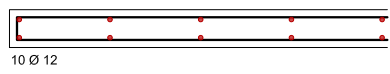
R = 309,6 (216,5 + 93,1) KN
N = 309,6-1-1,05 = 325,08 KN
 $A = \frac{325,08 \cdot 10}{18,84} = 174,10 \text{ cm}^2 \Rightarrow$ LATO A = 10 cm
LATO B = 100 cm
As = 0,008-10-100 = 8,00 cm² \Rightarrow 10 Ø 12



passo staffe ≤ 30 ; 20-Ø = 24 cm
Ø staffa ≥ 6 mm; Ø / 3 = Ø 6 mm
numero staffe: 300/24 = 13 + 4
Ø 6

10

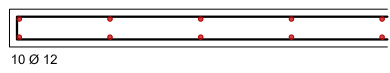
R = 309,6 (216,5 + 93,1) KN
N = 309,6-2-1,05 = 650,16 KN
 $A = \frac{650,16 \cdot 10}{18,84} = 348,20 \text{ cm}^2 \Rightarrow$ LATO A = 10 cm
LATO B = 100 cm
As = 0,008-10-100 = 8,00 cm² \Rightarrow 10 Ø 12



passo staffe ≤ 30 ; 20-Ø = 24 cm
Ø staffa ≥ 6 mm; Ø / 3 = Ø 6 mm
numero staffe: 300/24 = 13 + 4
Ø 6

9

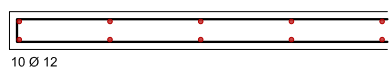
R = 309,6 (216,5 + 93,1) KN
N = 309,6-3-1,05 = 975,24 KN
 $A = \frac{975,24 \cdot 10}{18,84} = 522,30 \text{ cm}^2 \Rightarrow$ LATO A = 10 cm
LATO B = 100 cm
As = 0,008-10-100 = 8,00 cm² \Rightarrow 10 Ø 12



passo staffe ≤ 30 ; 20-Ø = 24 cm
Ø staffa ≥ 6 mm; Ø / 3 = Ø 6 mm
numero staffe: 300/24 = 13 + 4
Ø 6

8

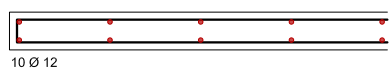
R = 309,6 (216,5 + 93,1) KN
N = 309,6-4-1,05 = 1300,32 KN
 $A = \frac{1300,32 \cdot 10}{18,84} = 696,40 \text{ cm}^2 \Rightarrow$ LATO A = 10 cm
LATO B = 100 cm
As = 0,008-10-100 = 8,00 cm² \Rightarrow 10 Ø 12



passo staffe ≤ 30 ; 20-Ø = 24 cm
Ø staffa ≥ 6 mm; Ø / 3 = Ø 6 mm
numero staffe: 300/24 = 13 + 4
Ø 6

7

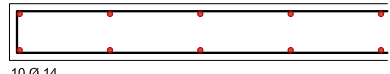
R = 309,6 (216,5 + 93,1) KN
N = 309,6-5-1,05 = 1625,40 KN
 $A = \frac{1625,40 \cdot 10}{18,84} = 870,50 \text{ cm}^2 \Rightarrow$ LATO A = 10 cm
LATO B = 100 cm
As = 0,008-10-100 = 8,00 cm² \Rightarrow 10 Ø 12



passo staffe ≤ 30 ; 20-Ø = 24 cm
Ø staffa ≥ 6 mm; Ø / 3 = Ø 6 mm
numero staffe: 300/24 = 13 + 4
Ø 6

6

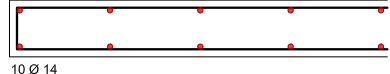
R = 309,6 (216,5 + 93,1) KN
N = 309,6-6-1,05 = 1950,48 KN
 $A = \frac{1950,48 \cdot 10}{18,84} = 1044,60 \text{ cm}^2 \Rightarrow$ LATO A = 15 cm
LATO B = 100 cm
As = 0,008-15-100 = 12,00 cm² \Rightarrow 10 Ø 14



passo staffe ≤ 30 ; 20-Ø = 28 cm
Ø staffa ≥ 6 mm; Ø / 3 = Ø 6 mm
numero staffe: 300/28 = 11 + 4
Ø 6

5

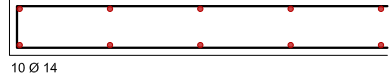
R = 309,6 (216,5 + 93,1) KN
N = 309,6-7-1,05 = 2275,56 KN
 $A = \frac{2275,56 \cdot 10}{18,84} = 1218,70 \text{ cm}^2 \Rightarrow$ LATO A = 15 cm
LATO B = 100 cm
As = 0,008-15-100 = 12,00 cm² \Rightarrow 10 Ø 14



passo staffe ≤ 30 ; 20-Ø = 28 cm
Ø staffa ≥ 6 mm; Ø / 3 = Ø 6 mm
numero staffe: 300/28 = 11 + 4
Ø 6

4

R = 309,6 (216,5 + 93,1) KN
N = 309,6-8-1,05 = 2600,64 KN
 $A = \frac{2600,64 \cdot 10}{18,84} = 1392,80 \text{ cm}^2 \Rightarrow$ LATO A = 15 cm
LATO B = 100 cm
As = 0,008-15-100 = 12,00 cm² \Rightarrow 10 Ø 14



passo staffe ≤ 30 ; 20-Ø = 28 cm
Ø staffa ≥ 6 mm; Ø / 3 = Ø 6 mm
numero staffe: 300/28 = 11 + 4
Ø 6

3

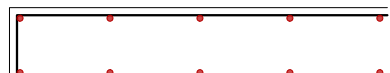
R = 309,6 (216,5 + 93,1) KN
N = 309,6-9-1,05 = 2925,72 KN
 $A = \frac{2925,72 \cdot 10}{18,84} = 1566,90 \text{ cm}^2 \Rightarrow$ LATO A = 20 cm
LATO B = 100 cm
As = 0,008-20-100 = 16,00 cm² \Rightarrow 10 Ø 16



passo staffe ≤ 30 ; 20-Ø = 30 cm
Ø staffa ≥ 6 mm; Ø / 3 = Ø 6 mm
numero staffe: 300/30 = 10 + 4
Ø 6

2

R = 309,6 (216,5 + 93,1) KN
N = 309,6-10-1,05 = 3250,8 KN
 $A = \frac{3250,8 \cdot 10}{18,84} = 1741,00 \text{ cm}^2 \Rightarrow$ LATO A = 20 cm
LATO B = 100 cm
As = 0,008-20-100 = 16,00 cm² \Rightarrow 10 Ø 16



passo staffe ≤ 30 ; 20-Ø = 30 cm
Ø staffa ≥ 6 mm; Ø / 3 = Ø 6 mm
numero staffe: 300/30 = 10 + 4
Ø 6

1

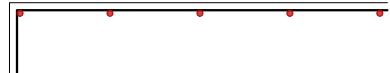
R = 309,6 (216,5 + 93,1) KN
N = 309,6-11-1,05 = 3575,88 KN
 $A = \frac{3575,88 \cdot 10}{18,84} = 1884,82 \text{ cm}^2 \Rightarrow$ LATO A = 20 cm
LATO B = 100 cm
As = 0,008-20-100 = 16,00 cm² \Rightarrow 10 Ø 16



passo staffe ≤ 30 ; 20-Ø = 30 cm
Ø staffa ≥ 6 mm; Ø / 3 = Ø 6 mm
numero staffe: 300/30 = 10 + 4
Ø 6

0

R = 309,6 (216,5 + 93,1) KN
N = 309,6-12-1,05 = 3900,96 KN
 $A = \frac{3900,96 \cdot 10}{18,84} = 2089,20 \text{ cm}^2 \Rightarrow$ LATO A = 25 cm
LATO B = 100 cm
As = 0,008-25-100 = 20,00 cm² \Rightarrow 10 Ø 16



passo staffe ≤ 30 ; 20-Ø = 30 cm
Ø staffa ≥ 6 mm; Ø / 3 = Ø 6 mm
numero staffe: 300/30 = 10 + 4
Ø 6

