



LANDSCAPE LAYERS - ANALYSIS ...

It is been considered a quite extended area in order to develop a new future settlement different from that one proposed by EXPO-PARK Company. In fact moving along a north-south direction, this area includes various landscape features and it presents a lot of very huge empty or not totally used grounds.

Analysing the landscape structure it can be traced a very simple scheme in order to underlined the main elements which come together in this amorphous area, since it is quite boundless. Mainly there are three different layers which are related to a specific landscape: the *green landscape* layer, the *urban landscape* layer and an undefined space, that can be seen as a *hybrid landscape* layer.

The *green landscape* layer includes all those natural and open spaces: in particular the Expo Park on the southern part of the ex-Expo area; the very extended agricultural fields and meadows which are next to the Expo Park, where some wind blades were installed to produce sustainable energy; finally in the northern part of the project area considered there is a playground-park which is on the border of the Kronsberg neighborhood, a residential area built for the Expo 2000 following ecological and sustainable criteria.

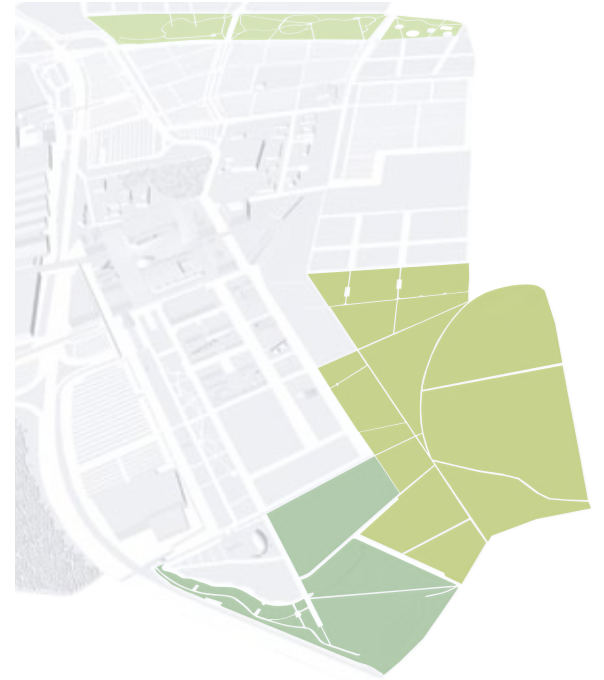
The set of all the present buildings on the ex-Expo grounds, either they are still working or not, forms the *urban landscape* layer; from the end of the Expo 2000 until today some of them have been converted, abandoned or newly built (for example the IKEA shop). Anyway this layer includes all those structures which occupy physically an area.

Finally there is a third layer: it includes empty and very extended spaces not completely exploit.

They forms a sort of *hybrid landscape* that can be compared with the *third landscape* by Gill Clément.

These *hybrid landscape* spaces actually work as car parking grounds; because of their huge extension and the low vehicles traffic around the ex-Expo area, they works mostly as urban voids. In this way some of them lost their car parking configuration during the last 10 years, becoming big and wild pieces of ground.

GREEN LANDSCAPE



URBAN LANDSCAPE



HYBRID LANDSCAPE





22.5 ha



GREEN AREA / PLAYGROUND ...

This green area is a 22.5 ha playground.

It is placed next the Kronsberg neighborhood, a residential area built following the sustainable and ecological criteria during the construction of the Expo 2000 site.

The southern part of this park confines with extended and unused car parking grounds, back the Expo Plaza and the ex-Expo pavilions area.



PARK AGRICOLE AND KRONSBURG LANDSCAPE ...

The vision for the Kronsberg landscape as part of the registered EXPO project *City as Garden* was: that a dreary 'beet prairie' should be transformed into a unique landscape that emphasises its natural and historical character, that the views over the city and countryside should be enriched flora and fauna habitats, maintaining a long-term agricultural use. Following the first landscape plan, from 1987, some 60 hectares of the crest of the hill have already been planted as woodland.

Alterations to the land use plan also brought about changes to the landscape plan. Major co-funders of the project with the *City of Hannover* are the Hannover region local government association, federal government and the *EXPO 2000 Hannover GmbH* Company. In this connection the federal department of environmental protection has recognised significant parts of the Kronsberg landscape concepts as developmental and experimental programmes in nature conservation and landscape care.

The Kronsberg (Krons Mountain) is the highest point in Hannover's landscape. Traditionally used for growing grain, Kronsberg was identified as the City's largest remaining land area that was suitable for major development. The vision for the Kronsberg landscape has been influenced by the EXPO initiative *City as Garden*. As part of this, more than 60 hectares have been reforested, and the district has been designed with an extensive system of small and large parks, ranging from semi-public to public, a network of playgrounds and foot and bicycle paths, and a creative system for capturing and retaining rainwater. An Agri-Expo project, *Environmentally Friendly Agriculture and Regional Marketing at Kronsberg* has been developed to demonstrate more sustainable agricultural methods and new possibilities for relationships between urban and agricultural processes.

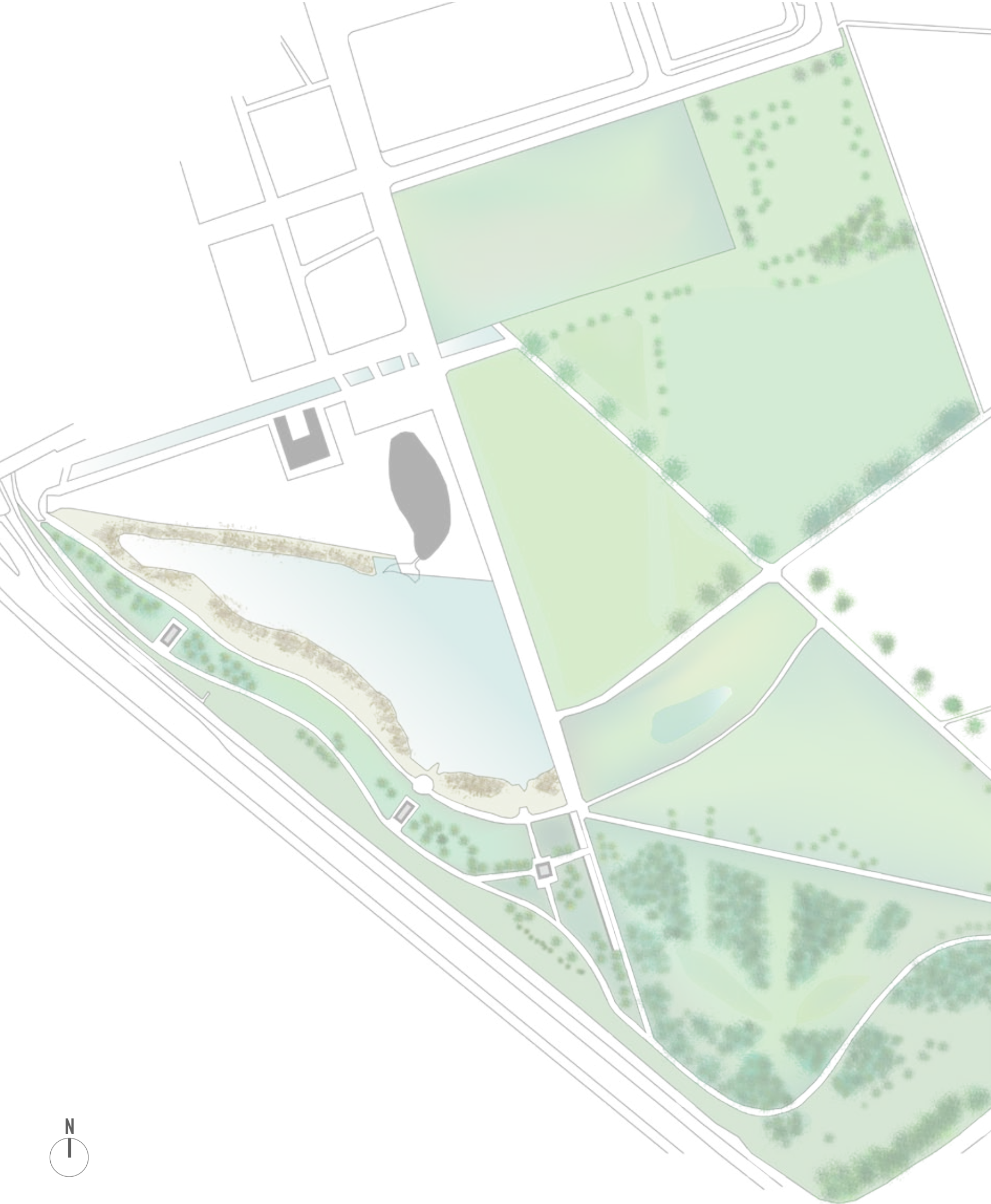
Today the *Herrmannsforfer Landwerkstätten am Kronsberg (Country Workshops)* is an ecological model farm of about 100 hectares in size. The farm's produce is processed and marketed locally, either direct at the farm in its own eco-market or through other area markets. The farm produces meat, dairy products, bread, and beer.

These considered 38.5 ha agricultural fields are just a part of the whole 120 ha area of the *Kronsberg landscape program*: these lands are used mainly as grazing for sheep-farming and as production of eolic energy thanks to the installation of some wind-blades.



38.5 ha





EXPO PARK ...

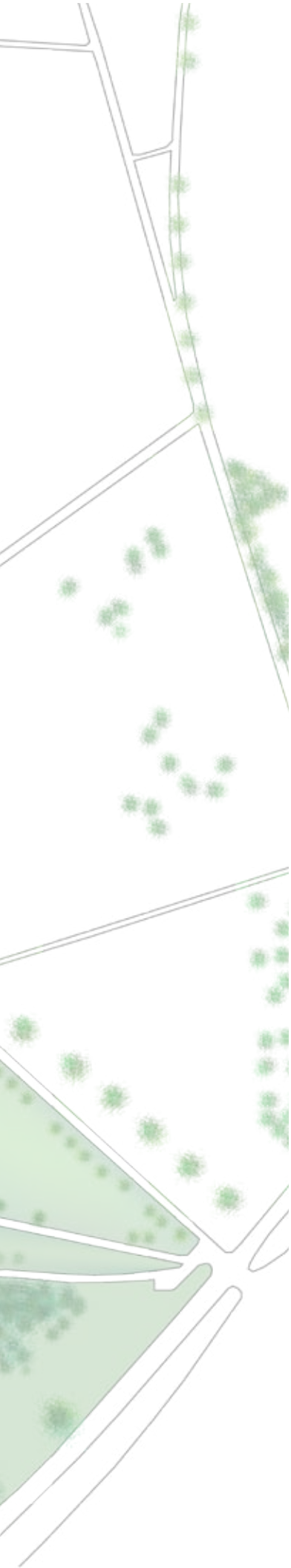
The Expo Park was built as green area for the Expo 2000 together with the Parc Agricole; it is extended at the end of the pavilion settlement and it is about 20 ha wide.

Starting from the from the Whale pavilion, the symbolic architecture at the ex-south entrance to the Expo 2000, this park presents different landscape elements.

First of all the artificial lake behind the Whale pavilion is a marsh and it collects the whole water coming from the Expo buildings and the rain water, cleaning this fluids through a fitodepuration process due to the presence of vegetation. So this marsh is a humid area to collect and purify polluted water.

Another element is the main path which goes between the marsh / artificial lake and an artificial height, an artificial hill that works as a panoramic sight on the Expo pavilions. There are also other three panoramic points to look around the whole landscape.

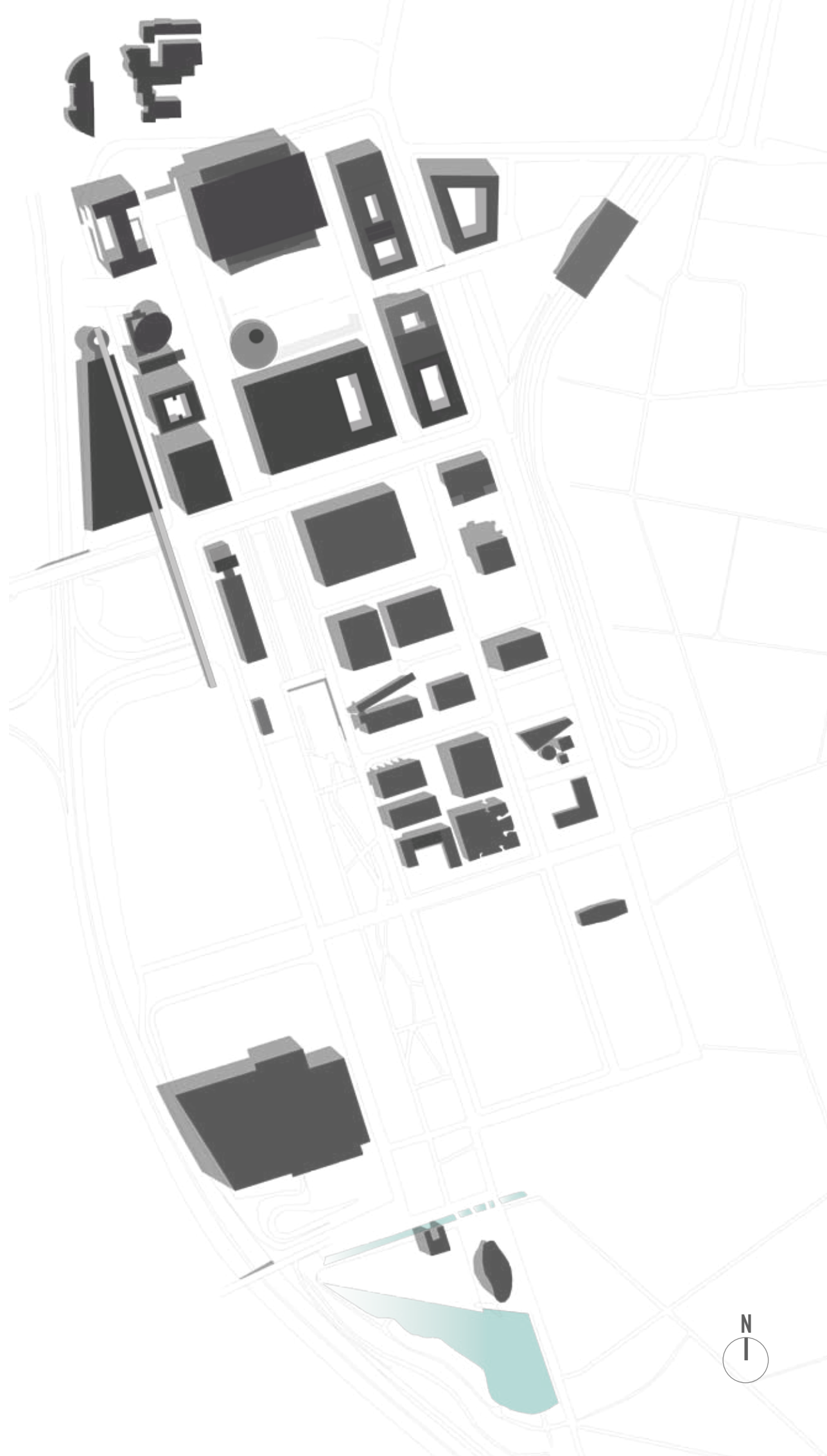
Going towards an east direction there is another linear height, a sort of strip-hill where you can reach its top going up some stairs: also this height is a panoramic point which looks towards the bordering Parc Agricole, a more plain and flatter green area.

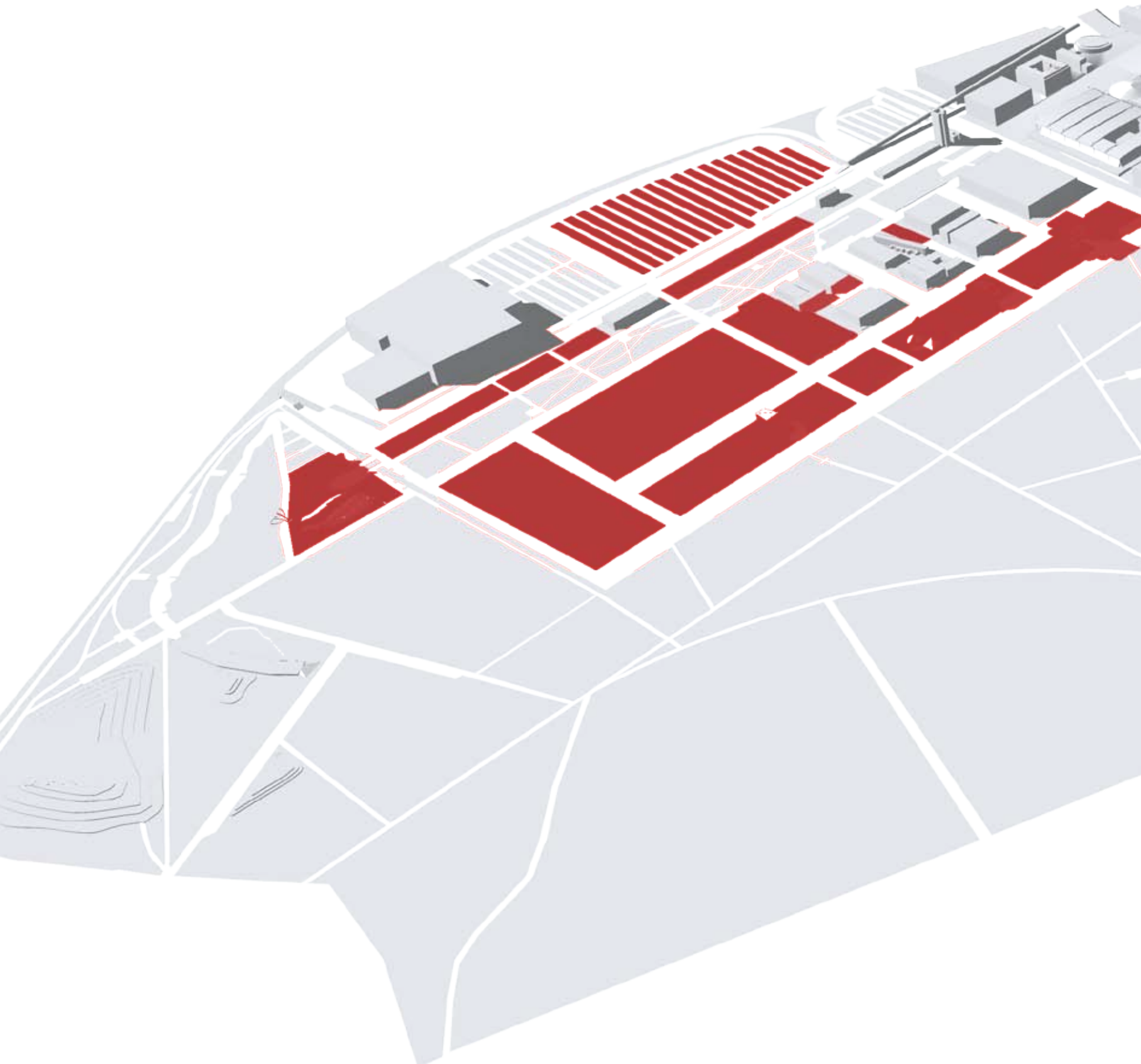


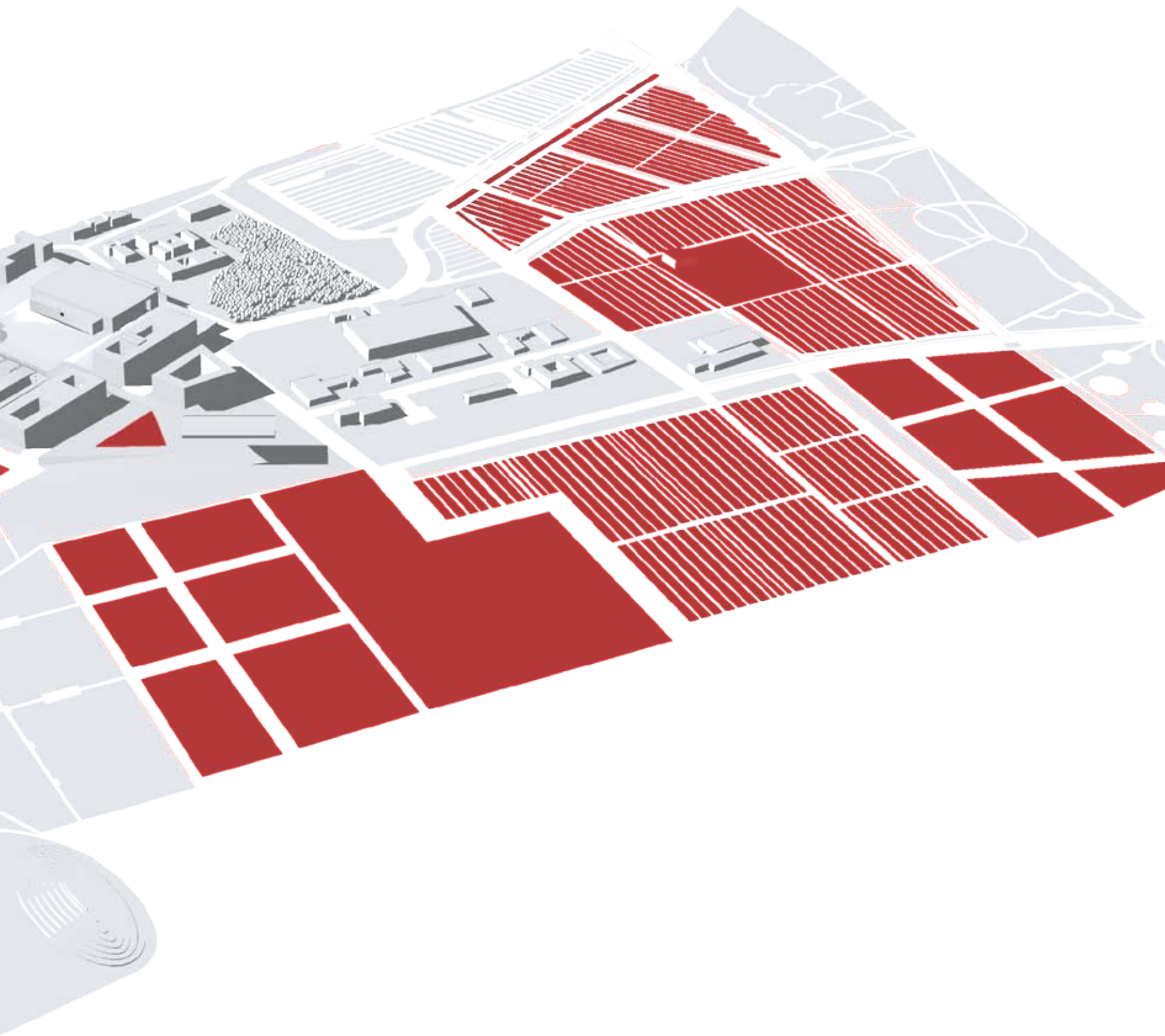
18 ha



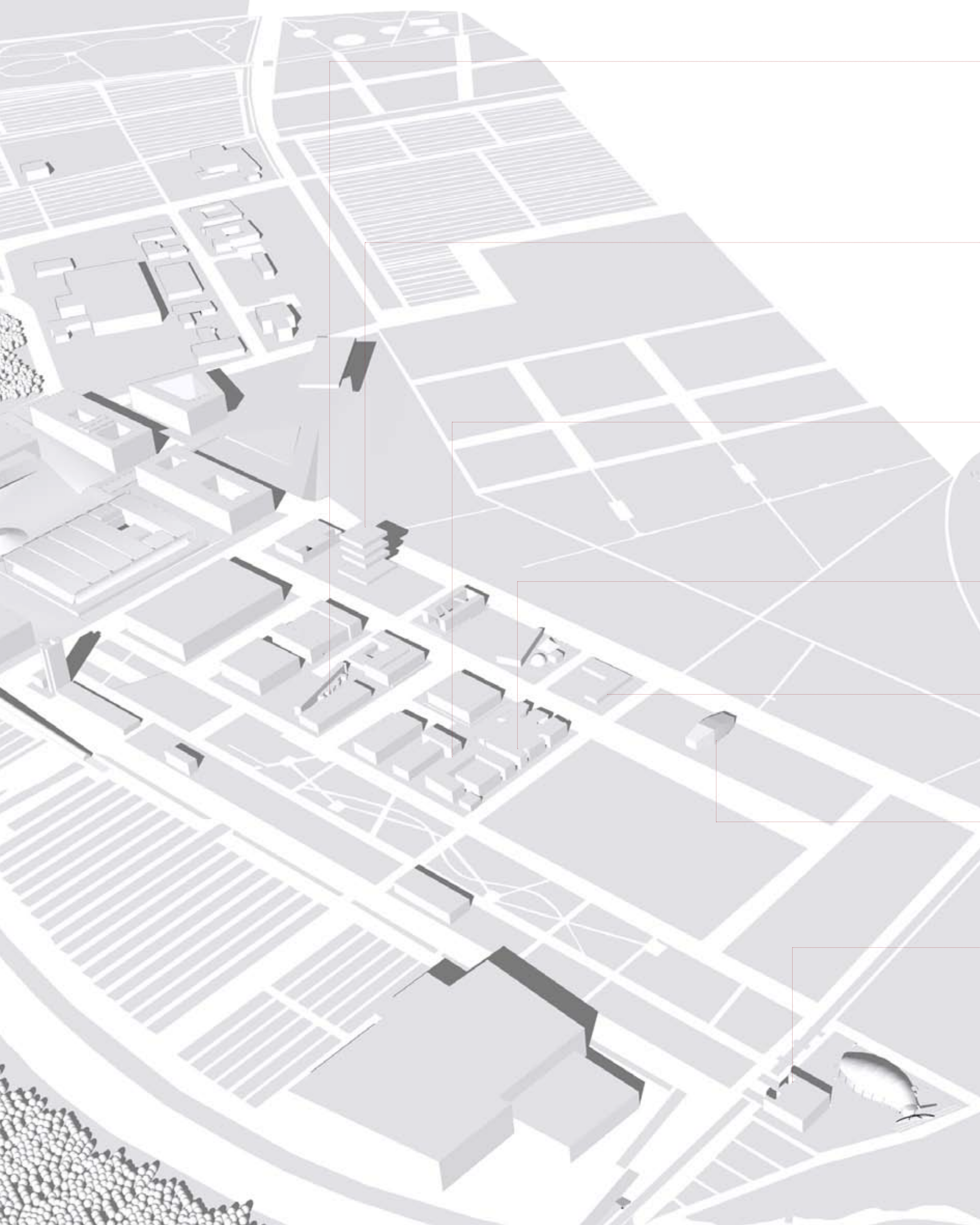
EXPO PLAZA AND EXPO PAVILIONS ...







New settlements, future sceneries ...





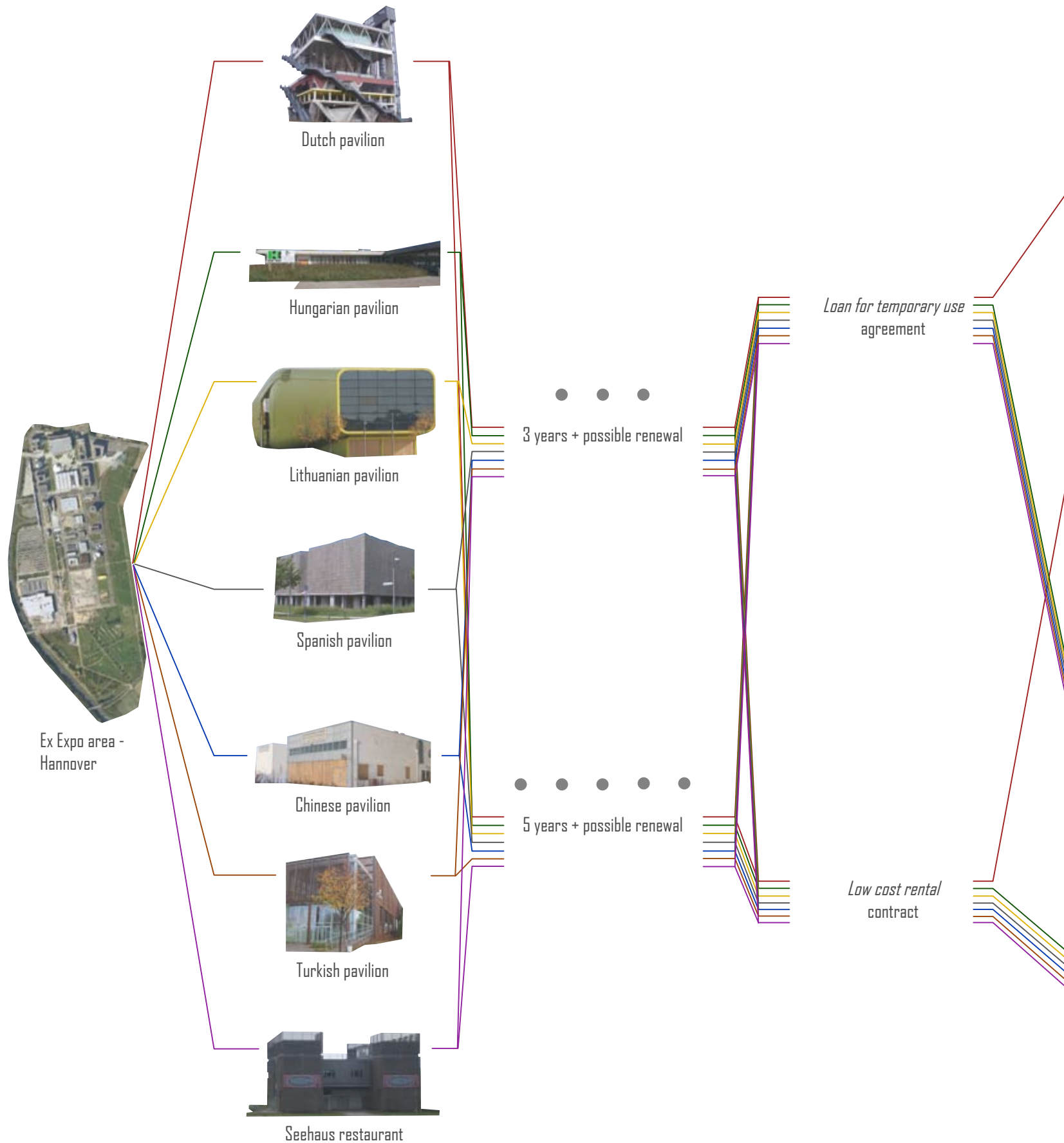
**ARCHITECTONIC VOIDS - abandoned pavilions -
temporary reuse program ...**

AVAILABLE AREAS
Abandoned urban areas

AVAILABLE SPACES
Abandoned buildings

DURATION
of temporary reuse program

RULES
agreements for temporary reuse

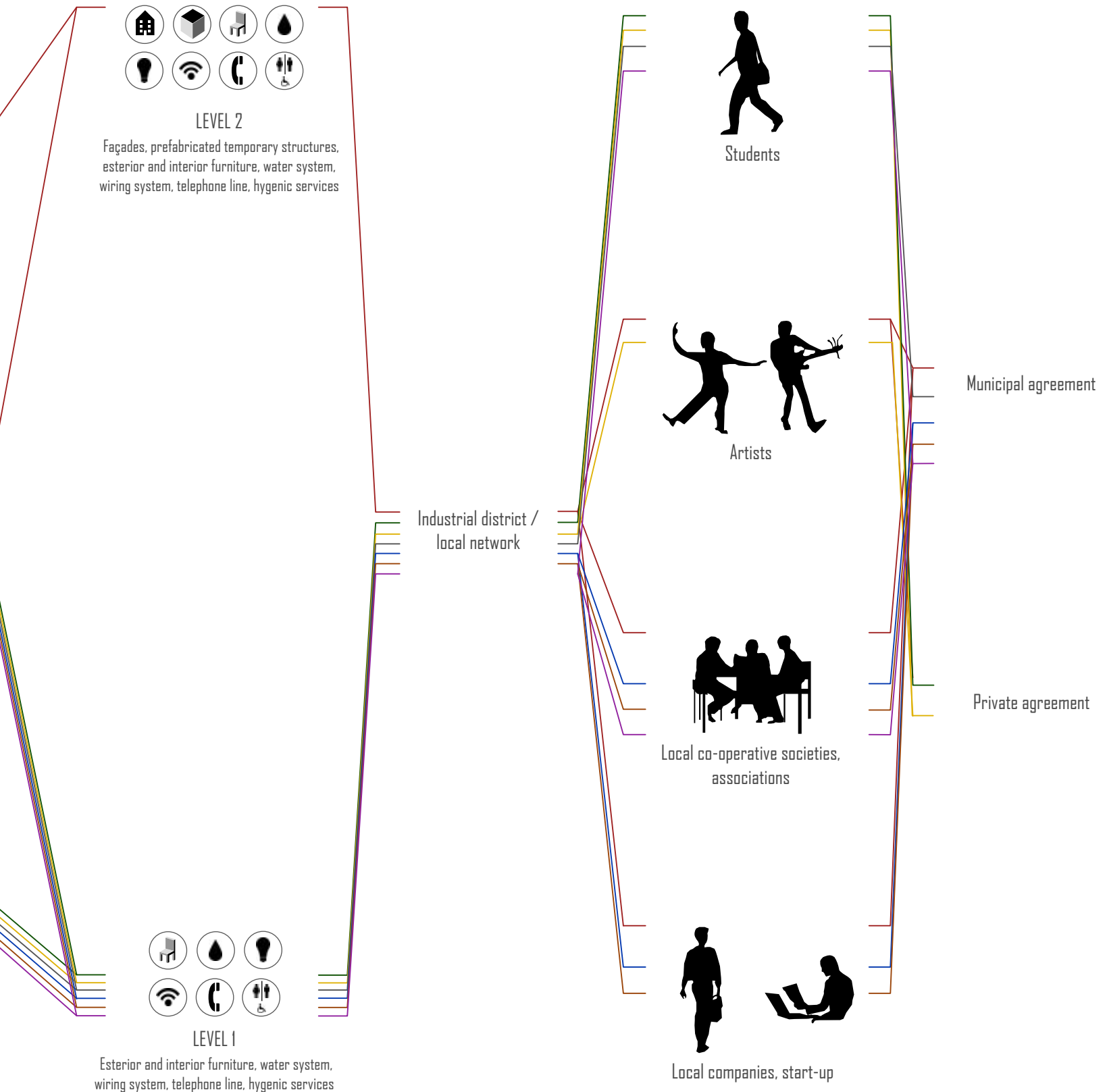


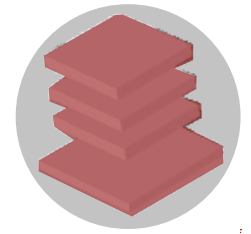
LEVELS OF INTERVENTION
for temporary architecture

URBAN TRANSFORMATIONS
developed system with temporary reuse
process

TEMPORARY USERS
people involved in using temporary
spaces

SUPPORT POLICIES
tools and standards for temporary
reuse





Ex area Expo

Abandoned industrial-commercial area in Hannover south periferifery - extension: 60 ha



Abandoned building

Dutch pavilion - Expo 2000 by MVRDV Architekten, Rotterdam
- built area: 1024 sqm - height: 40 m



Owner

Hannover municipality together with Dutch government

OFFERED AREAS/SPACES
Abandoned urban spaces / owners



3 years + possible renewal

or



5 years + possible renewal

Loan for temporary use agreement

Low cost rental contract

DURATION
Temporary reuse

RULES
Temporary reuse

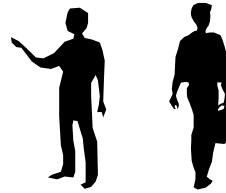
DUTCH PAVILION - NEW RESEARCH CENTRE FOR BOTANY SCIENCES AND LANDSCAPE

During the Expo 2000 Dutch pavilion was one of the most allegoric architecture about landscape and ecological themes: it represented in each floor a specific tipology of dutch landscape. The main idea is consequently to transform this structure as a research centre for landscape and botany, recovering some floors as gardens or greenhouse, and other levels with temporary and modular structures for offices and research spaces. Moreover there is also the possibility to equip the fourth level for artistic or scientific exhibitions.



LEVEL 2

Façades, prefabricated temporary structures, exterior and interior furniture, water system, wiring system, telephone line, hygenic services



BROKER 1 Local start-up



USERS Associacions, co-operative societies, artists

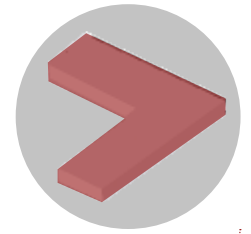
MUNICIPAL AGREEMENT

Temporary reuse agreement between Hannover Municipality and local start-up for short-term activities with timetable and possible final settlement for a research centre for landscape and botanical subjects.

LEVELS
Temporary architecture

SUBJECTS
Broker/user

SUPPORT POLICIES
Tools and standards for temporary reuse



Ex area Expo

Abandoned industrial-commercial area in Hannover south periferifery - extension: 60 ha



Abandoned building

Hungarian pavilion - Expo 2000 by György Vadász & Partners Architectural Co., Budapest - built area: 1788 sqm - height: 5 m



Owner

BBK-BAU GmbH, construction Company



3 years + possible renewal

or



5 years + possible renewal

Low cost rental/contract

OFFERED AREAS/SPACES
Abandoned urban spaces / owners

DURATION
Temporary reuse

RULES
Temporary reuse

HUNGARIAN PAVILION - PUBLIC STUDY HALL FOR STUDENTS

During the Expo 2000 Hungarian pavilion presented two different spaces: a removable wood structure that today is been removed, and a smaller building that wasn't dismantled. This building could be a good place where to equip a public study hall for the students of the near University Campus. The private owner could rent this space to the University Institutions with a low-cost contract in order to not leave in decay this building.



LEVEL 1
 Exterior and interior furniture, water system, wiring system, telephone line, hygienic services

BROKER 1
 Hannover Universities



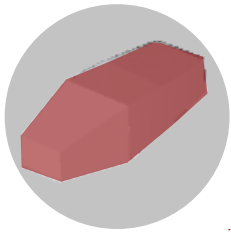
USERS
 Students

PRIVATE AGREEMENT
 Temporary reuse agreement between BBK-BAU GmbH and Hannover Universities in order to equip the hungarian pavilion as a public study hall.

LEVELS
 Temporary architecture

SUBJECTS
 Broker/user

SUPPORT POLICIES
 Tools and standards for temporary reuse



Ex area Expo

Abandoned industrial-commercial area in Hannover south periferifery - extension: 60 ha



Abandoned building

Lithuanian pavilion - Expo 2000 by Audrius Bucas and Gyn-taras Kuginys, Vilnius - built area: 1200 sqm - height: 15 m



Owner

Gintaro Kelias, holding Company



3 years + possible renewal

or



5 years + possible renewal

Loan for temporary use agreement

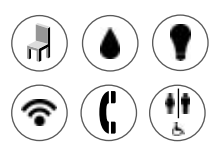
OFFERED AREAS/SPACES
Abandoned urban spaces / owners

DURATION
Temporary reuse

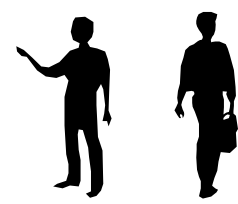
RULES
Temporary reuse

LITHUANIAN PAVILION - CENTRE FOR MEDIA AND DESIGN EXHIBITIONS

Lithuanian pavilion is another impressive architecture of the Expo 2000: it appears like a huge yellow box, looking like a big telescope on the outside landscape. Because of its shape this pavilion could be reused as space for creative and artistic activities, including design and web-design, multimedia arts, cinema and photography; these activities could be supported also with the cooperation of the Faculty of Media and Communication that is in the near Expo Plaza, developing a collaboration between students, local industry (start-up) and association/co-operative societies of artists.

LEVEL 1
 Exterior and interior furniture, water system, wiring system, telephone line, hygienic services



BROKER 1
 Local start-up for design, arts and media



PRIVATE AGREEMENT

Temporary reuse agreement between Gintaro Kelis Holding Company and a local start-up in order to develop design and multimedial projects with artists, associations and cooperative societies for arts and entertainments.

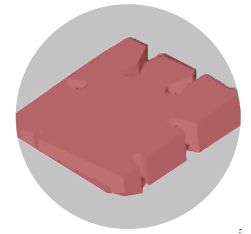


USERS
 Associations, co-operative societies, artists students of Media an Communication Faculty

LEVELS
 Temporary architecture

SUBJECTS
 Broker/user

SUPPORT POLICIES
 Tools and standards for temporary reuse



Ex area Expo

Abandoned industrial-commercial area in Hannover south periferifery - extension: 60 ha



Abandoned building

Spanish pavilion - Expo 2000 by Cruz y Ortiz, Seville - built area: 2987 sqm - height: 25 m



Owner

Hannover municipality

OFFERED AREAS/ SPACES
Abandoned urban spaces / owners



3 years + possible renewal

or



5 years + possible renewal

Low cost rental/contract

DURATION
Temporary reuse

RULES
Temporary reuse

SPANISH PAVILION - NEW LIBRARY FOR ARTS AND COMMUNICATION SCIENCES

Spanish pavilion is a big square box: it looks like a big rock, but inside there is a very bright patio. Because its shape and the interior distributions this pavilion could be readapt as a library for students of the University Campus in the near Expo Plaza. The program of temporary reuse can start with an agreement between the Hannover Municipality, that is the actual owner, and the University Campus in order to reactivate this huge space as a public culture place. The process could start as a temporary reuse project at the beginning and later it can be definitively settled as a new public library specialized in arts and communications subjects.



LEVEL 1
 Exterior and interior furniture, water system, wiring system, telephone line, hygienic services



BROKER 1
 Hannover Universities



USERS
 Students

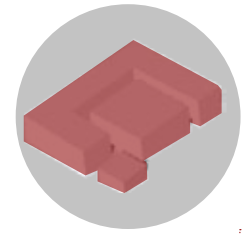
MUNICIPAL AGREEMENT

Temporary reuse agreement between Hannover municipality and Hannover Universities in order to equip the spanish pavilion as a public library.

LEVELS
 Temporary architecture

SUBJECTS
 Broker/user

SUPPORT POLICIES
 Tools and standards for temporary reuse



Ex area Expo

Abandoned industrial-commercial area in Hannover south periferifery - extension: 60 ha



Abandoned building

Chinese pavilion - Expo 2000 by GVI Gesellschaft zur Verwaltung von Immobilien mbH, Hannover - built area: 1875 sqm - height: 20 m



Owner

Hannover municipality

OFFERED AREAS/SPACES
Abandoned urban spaces / owners



3 years + possible renewal

or



5 years + possible renewal

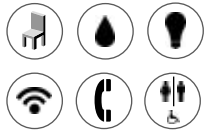
Low cost rental contract

DURATION
Temporary reuse

RULES
Temporary reuse

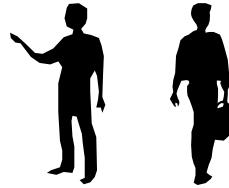
CHINESE PAVILION - SPACES FOR LOCAL START-UP IN TECHNOLOGICAL INDUSTRY

Chinese pavilion is a big pavilion without a specific architectural character. Anyway it offers a lot of space to install offices and industrial activity for informatic and technology. The idea infact consists in renting these spaces to local start-up interested in the new technology field (informatic systems, internet). The reuse program can start giving these spaces, owned by the Hannover municipality, with a low cost rent to these local company groups.



LEVEL 1

Esterior and interior furniture, water system, wiring system, telephone line, hygenic services



BROKER 1 / USERS

Local start-up for technology and informatic systems

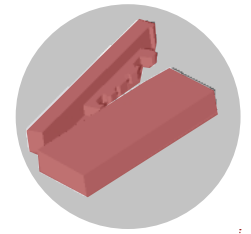
MUNICIPAL AGREEMENT

Temporary reuse agreement between Hannover municipality and local start-up for technology and informatic systems.

LEVELS
Temporary architecture

SUBJECTS
Broker/user

SUPPORT POLICIES
Tools and standards for temporary reuse



Ex area Expo

Abandoned industrial-commercial area in Hannover south periferifery - extension: 60 ha



Abandoned building

Turkish pavilion - Expo 2000 by Tabanlıoğlu Architecture & Consulting LTD.CO, Istanbul - built area: 1848 sqm - height: 20 m



Owner

Hannover municipality together Dutch government

OFFERED AREAS/ SPACES
Abandoned urban spaces / owners



3 years + possible renewal

or



5 years + possible renewal

Low cost rental contract

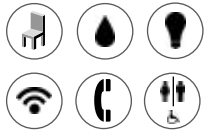
DURATION
Temporary reuse

RULES
Temporary reuse

TURKISH PAVILION - SPACES FOR LOCAL START-UP IN TECHNOLOGICAL SERVICES

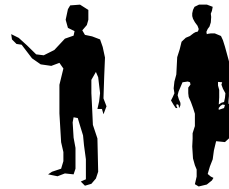
Turkish pavilion is a big and bright pavilion that can offer spaces for companies which work in technological services field (for example telephonic companies).

The reuse program can start giving these spaces, owned by the Hannover municipality, with a low cost rent to these local company groups.



LEVEL I

Exterior and interior furniture, water system, wiring system, telephone line, hygienic services



BROKER 1 / USERS

Local start-up for technological services

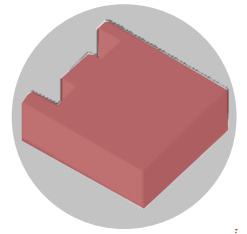
MUNICIPAL AGREEMENT

Temporary reuse agreement between Hannover municipality and local start-up for technological services.

LEVELS
Temporary architecture

SUBJECTS
Broker/user

SUPPORT POLICIES
Tools and standards for temporary reuse



Ex area Expo

Abandoned industrial-commercial area in Hannover south periferifery - extension: 60 ha



Abandoned building

Seehaus restaurant - Expo 2000 - built area: 990 sqm - height: 25 m



Owner

Hannover municipality



3 years + possible renewal

or



5 years + possible renewal

Low cost rental contract

OFFERED AREAS/ SPACES
Abandoned urban spaces / owners

DURATION
Temporary reuse

RULES
Temporary reuse

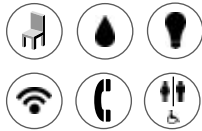
SEEHAUS RESTAURANT - NEW SELF SERVICE STUDENT CAFÉ

Seehaus pavilion was used as a restaurant during the Expo 2000, After the event it was gradually abandoned, going in decay like some other pavilions. Anyway this building could be reactivated with a very simple program, re-establishing its previous function: in fact Seehaus could be transformed in a café / canteen under contract with Studentwerk Hannover Agency, in order to give more advantageous and cheaper services to the students which attending the University Campus in the near Expo Plaza.



BROKER I

Studentwerk Hannover -
Local Agency for university students' services



LEVEL I

Exterior and interior furniture, water system, wiring system, telephone line, hygienic services



USERS

University Students

MUNICIPAL AGREEMENT

Temporary reuse agreement between Hannover municipality and Studentwerk Hannover in order to equip the buildings as café/ canteen.

The Studentwerk offers a public service giving more advantageous prices to the students.

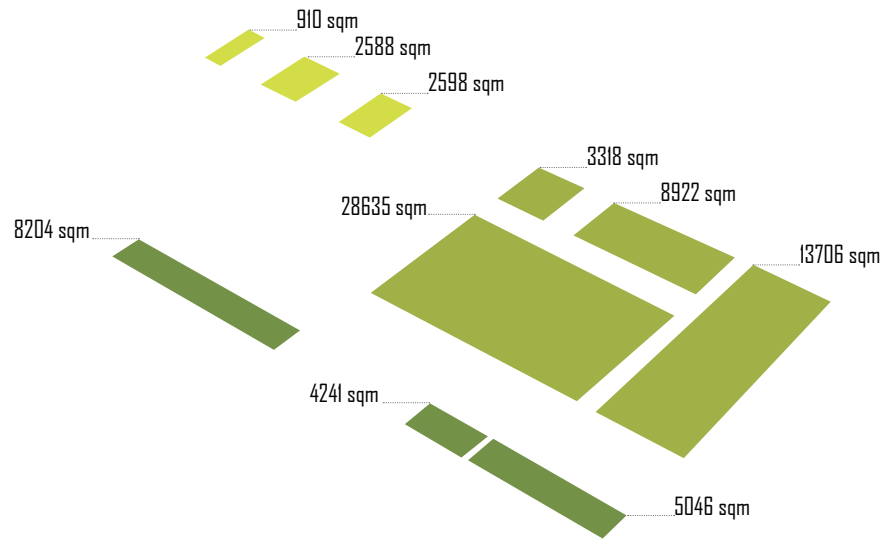
The municipal agreement may consist in a low-cost rent contract.

LEVELS
Temporary architecture

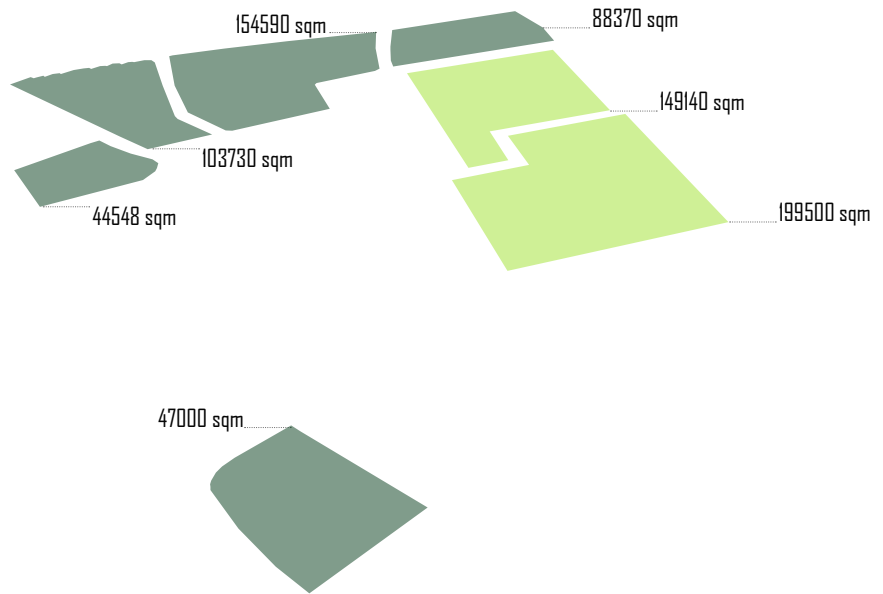
SUBJECTS
Broker/user

SUPPORT POLICIES
Tools and standards for temporary reuse



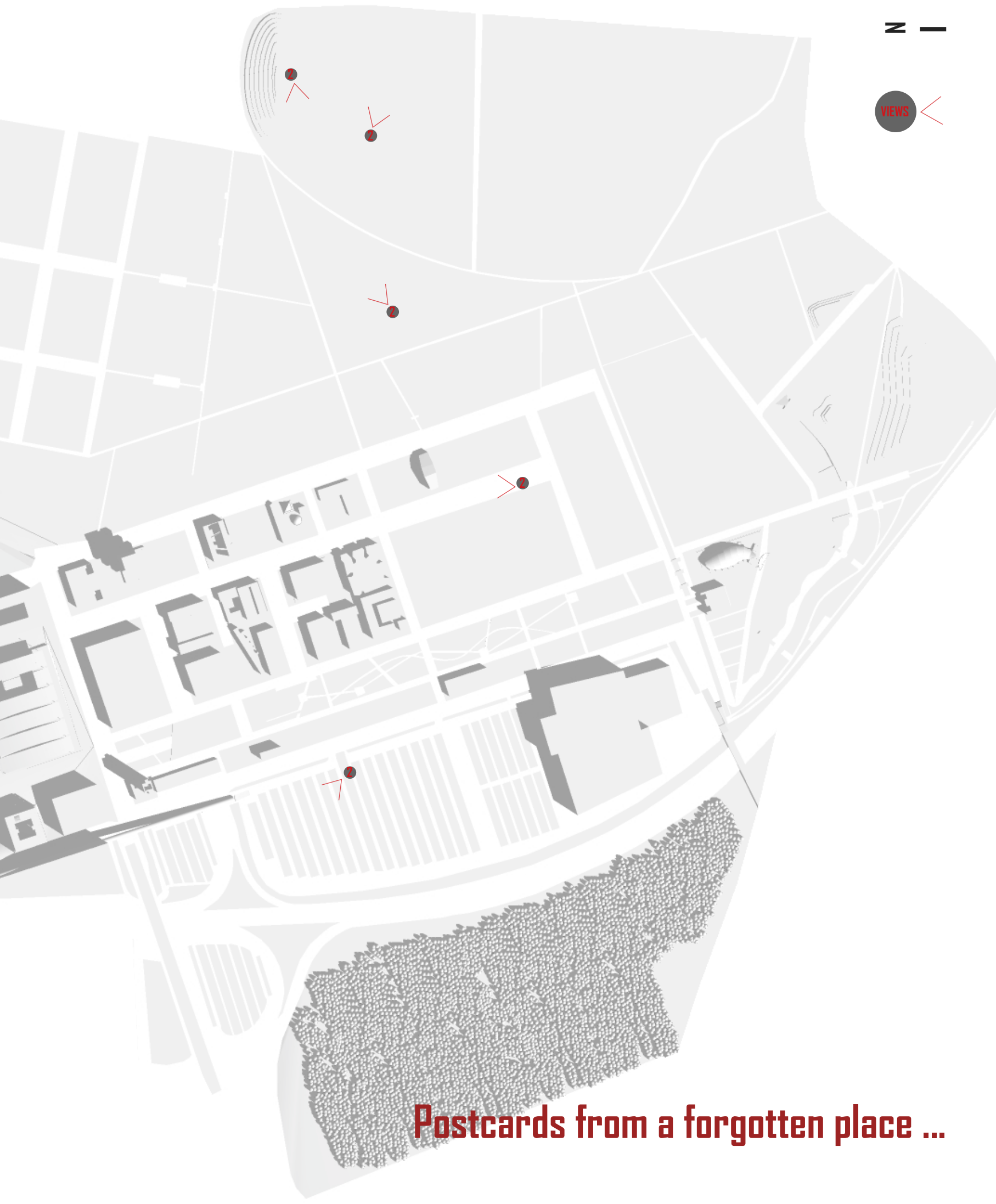


SPONTANEOUS GARDENS - 6096 sqm	COMPLETING OF THE EXISTING "EVOLVING GARDENS" - 17491 sqm	NEW LANDSCAPE PARK - 54581 sqm
--------------------------------	---	--------------------------------



LAND ART INSTALLATIONS ON EXISTING AGRICULTURAL AREA - 348640 sqm	NEW WOODLAND, REFORESTATION ON EXISTING CAR PARKING AREA - 438238 sqm
---	---





Postcards from a forgotten place ...





