



UN NUOVO RUOLO DI MILANO PER LA CITTA' POLICENTRICA:

MELEGNANO - Scalo intermodale - Ortomercaio

Riferimenti progettuali

RELAORE: E. Borodogna

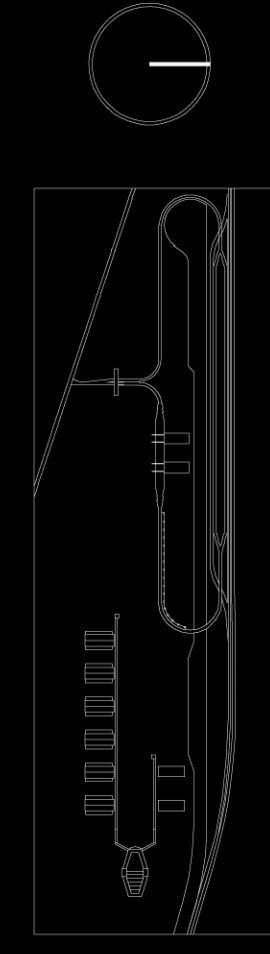
CORRELATORI: M. Canesi, Ge. Canella

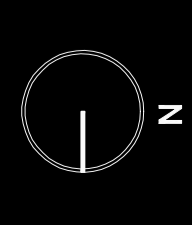
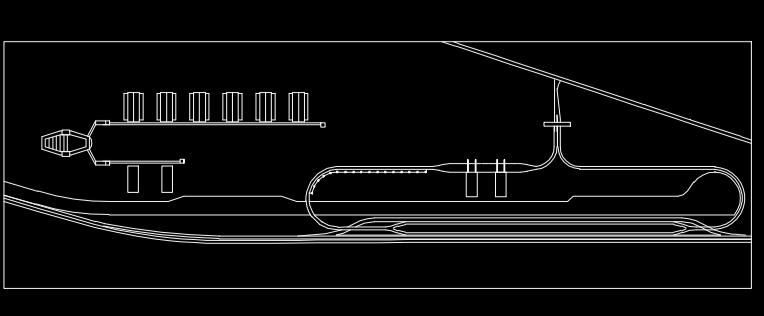
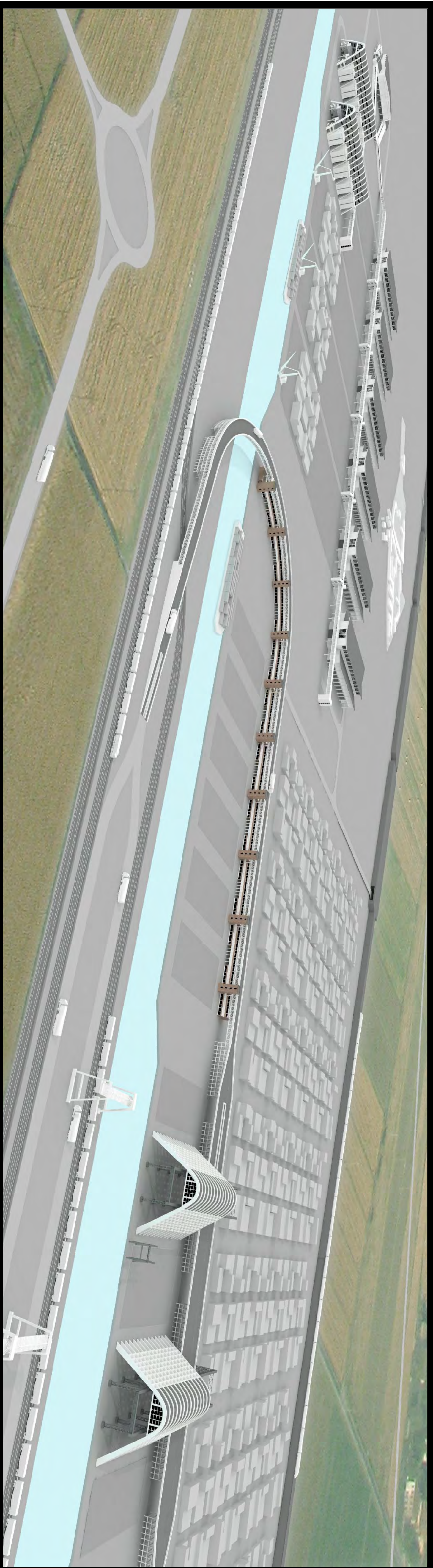
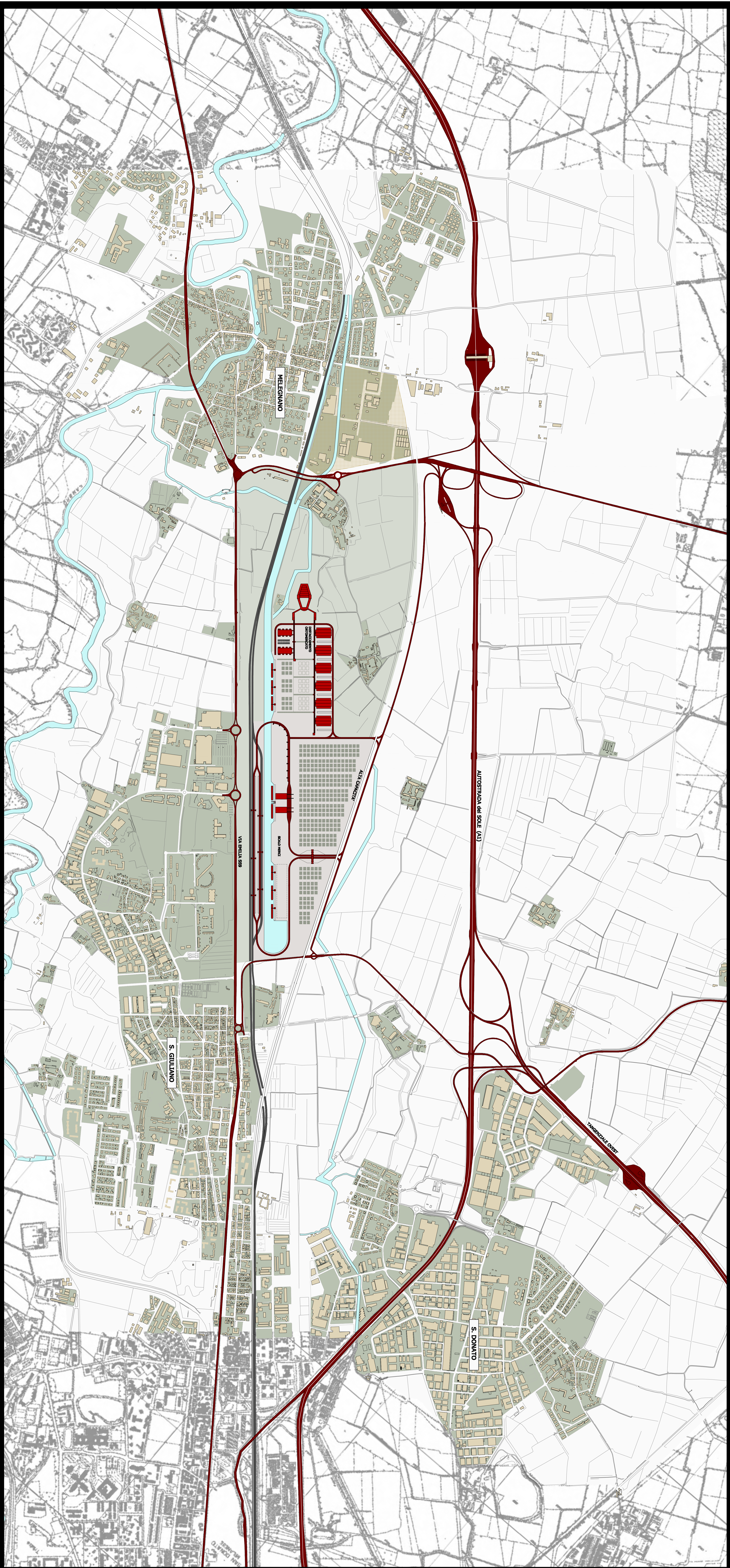
M. Biagi, E. Mangano, M. Madeddu V. M. Finzi

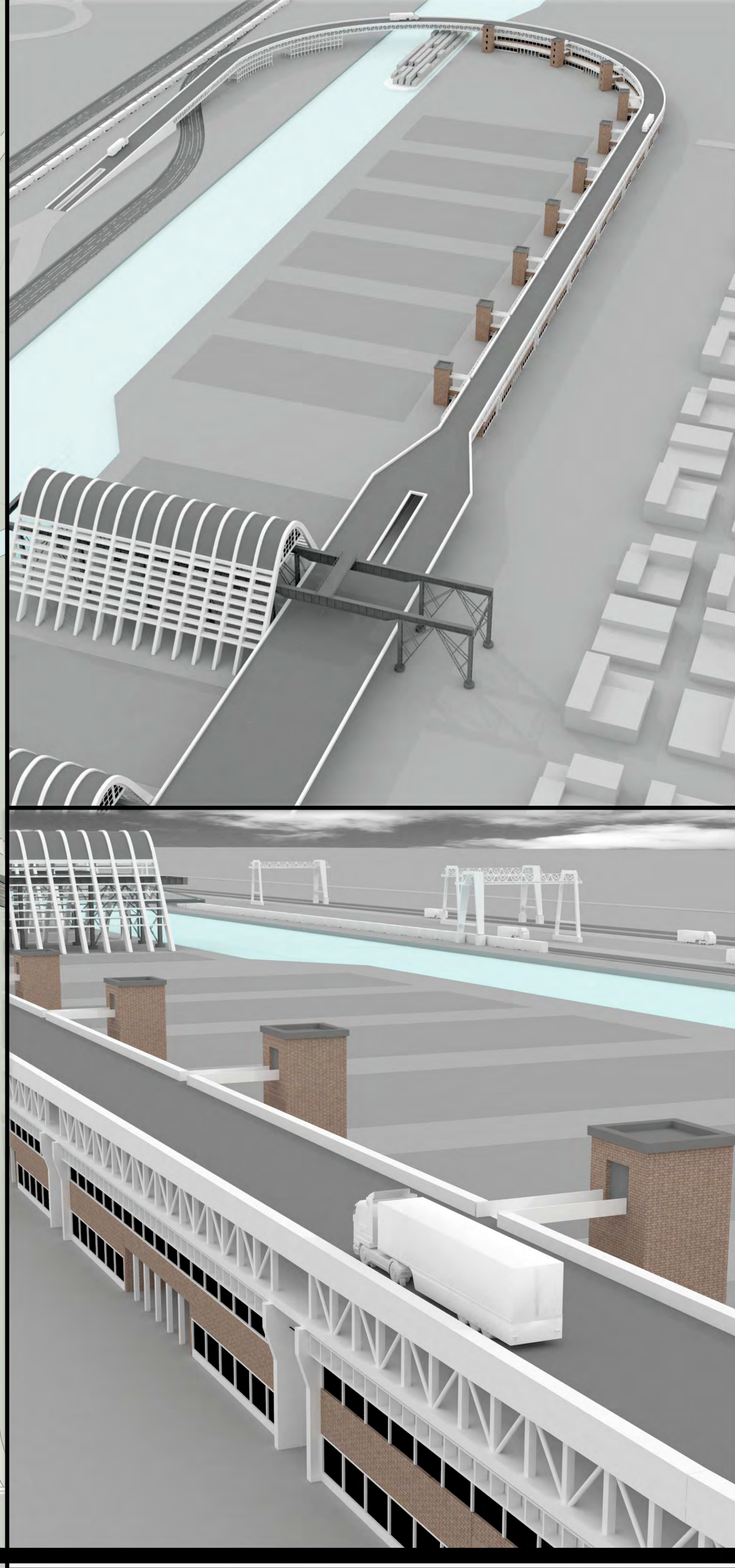
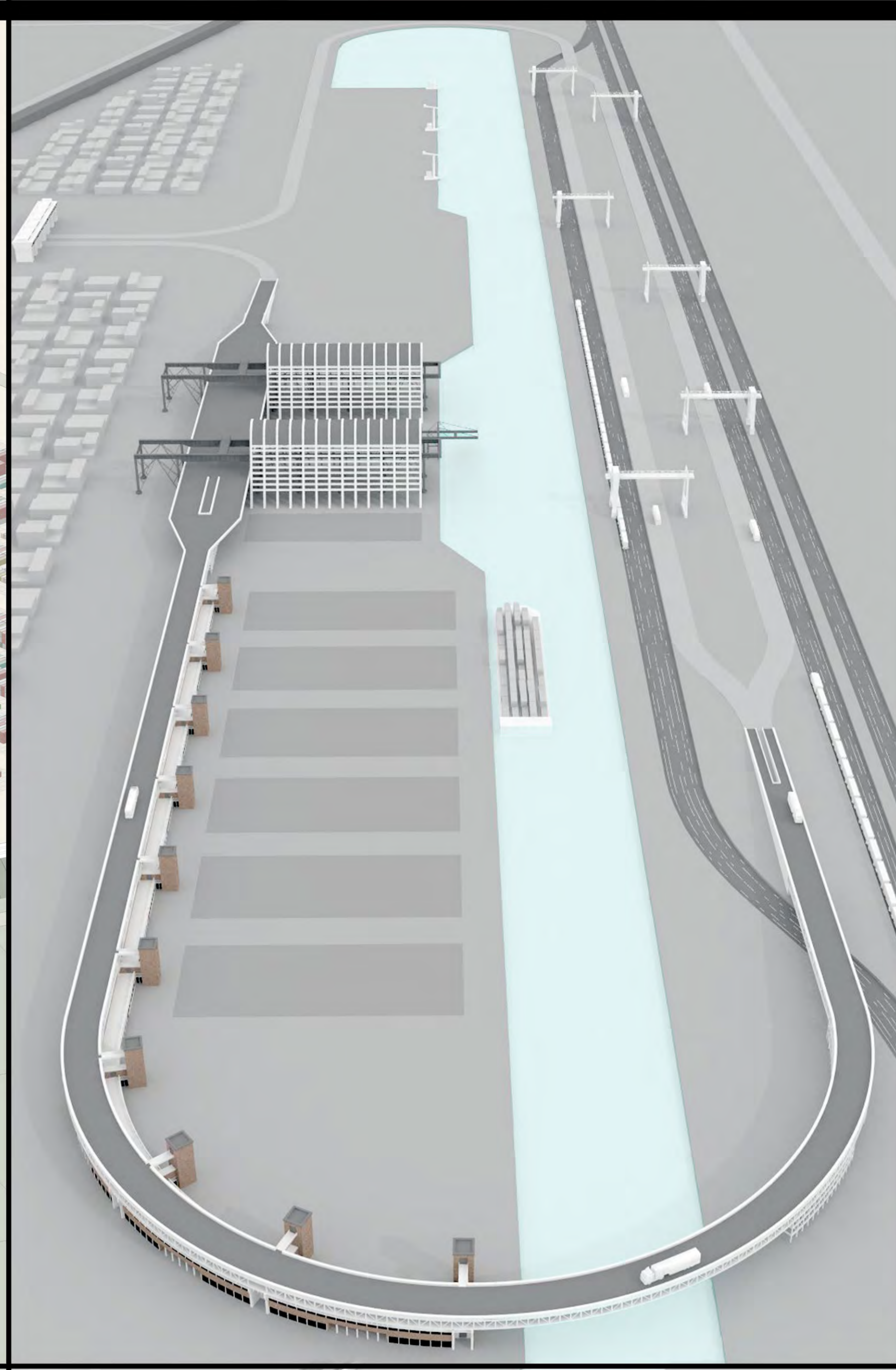
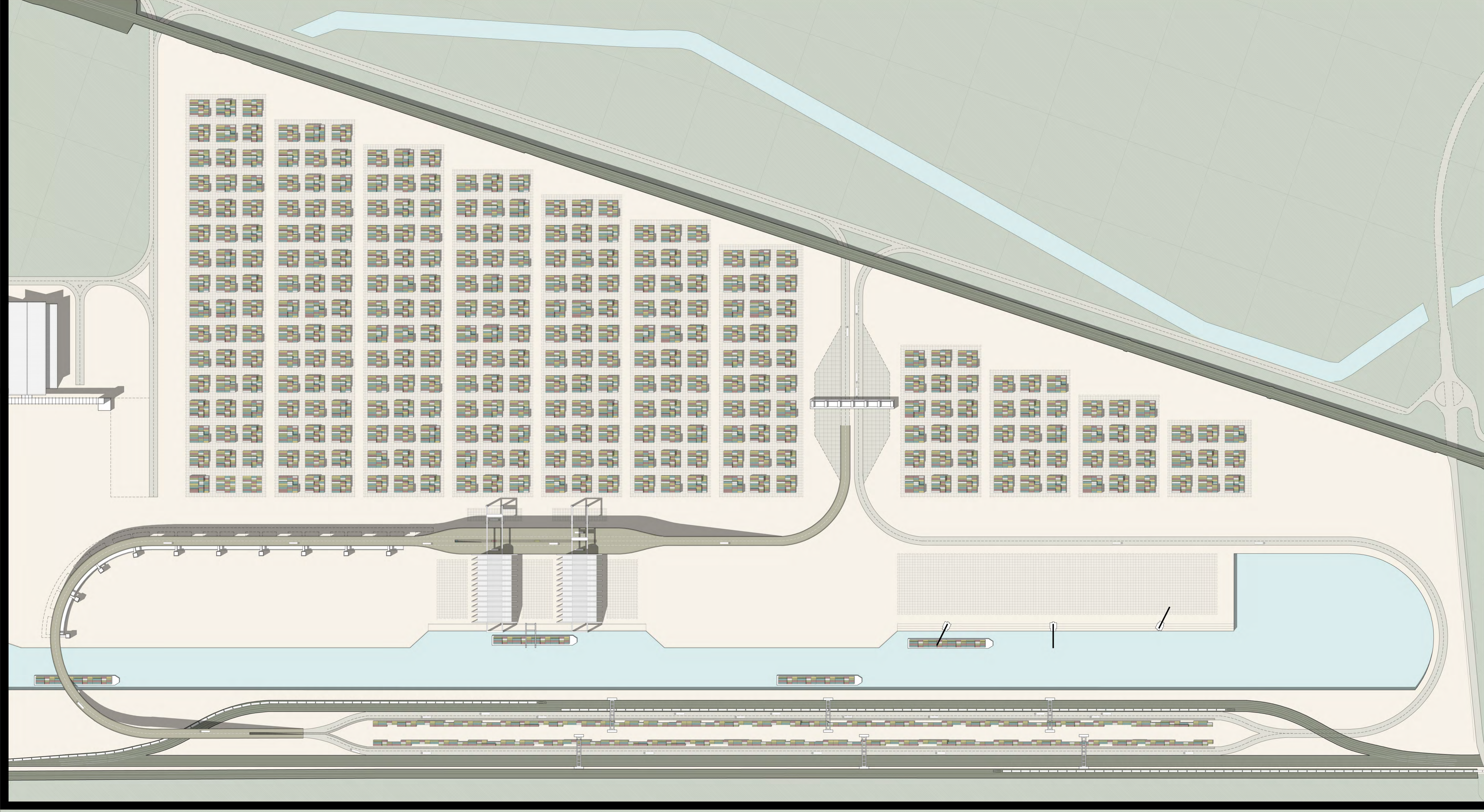
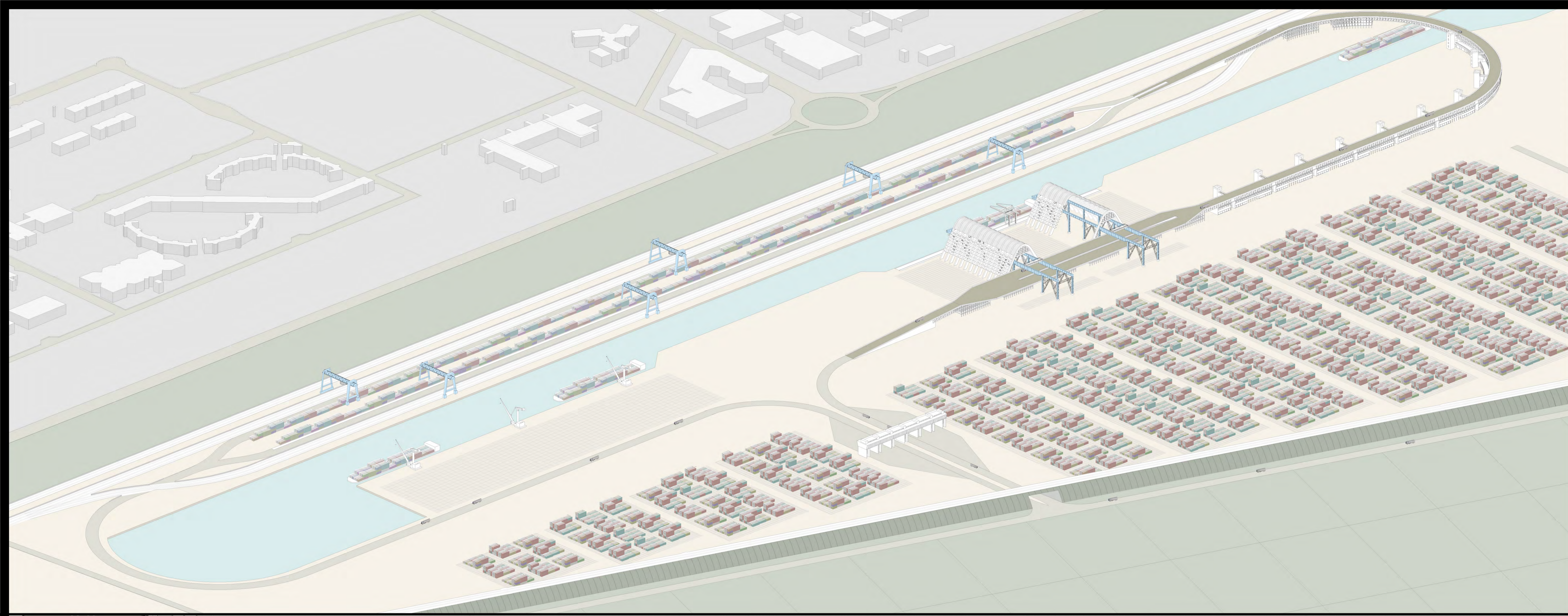
Politecnico di Milano

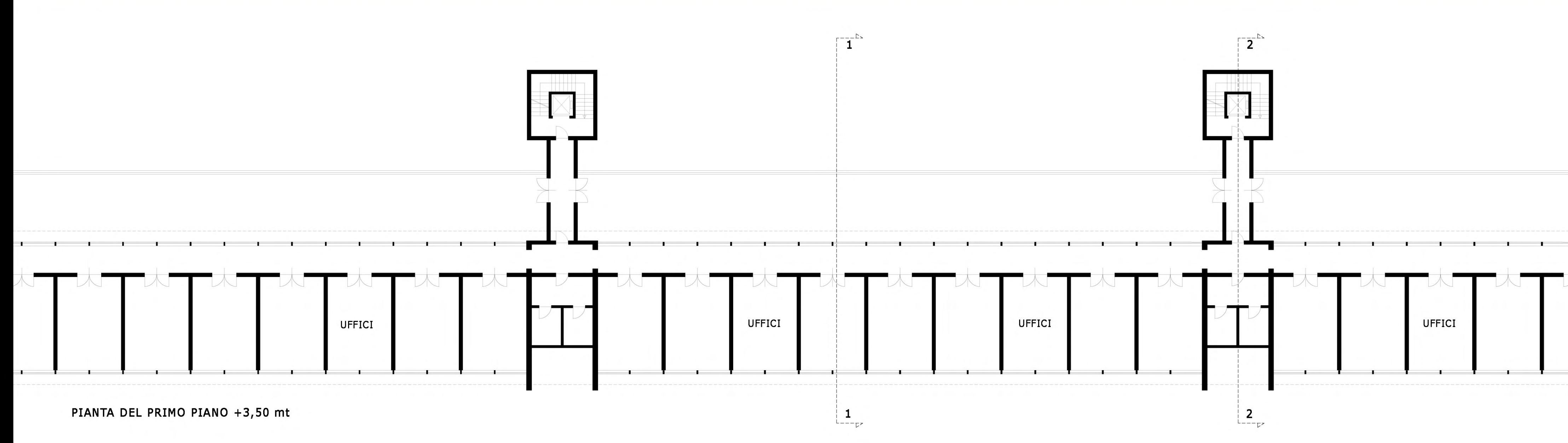
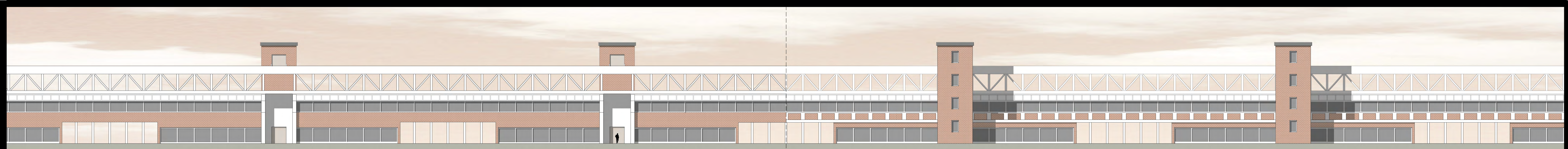
Facoltà di Architettura civile - Bovisa

Laure Specialistica Magistrale UE in Architettura
A.A. 2009/2010

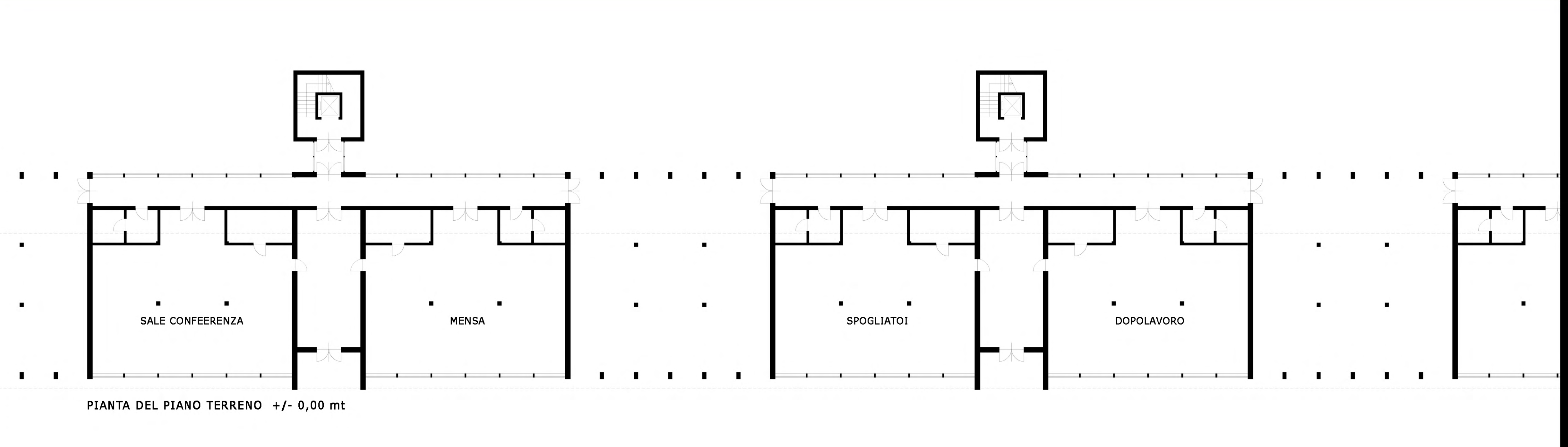




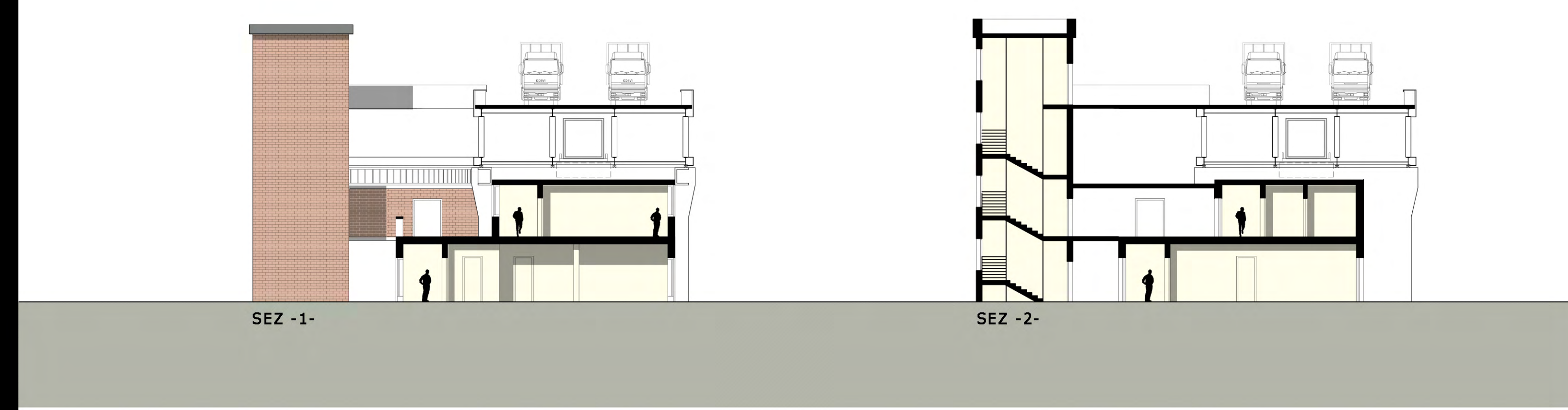




PIANTA DEL PRIMO PIANO +3,50 mt

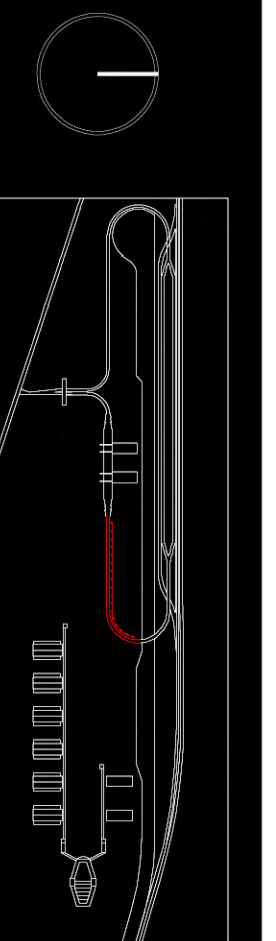
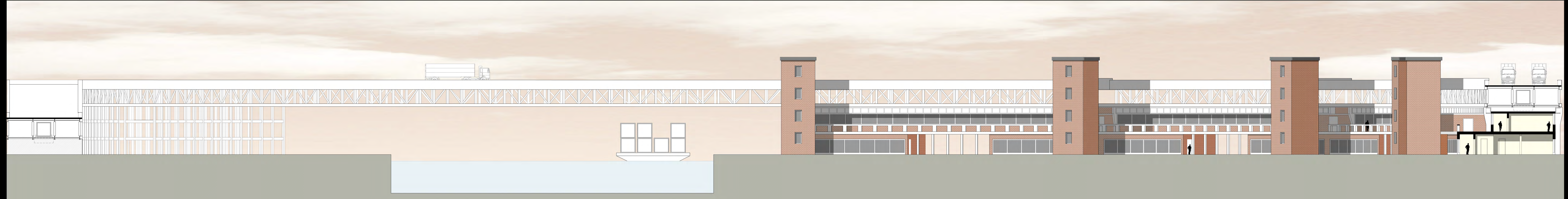
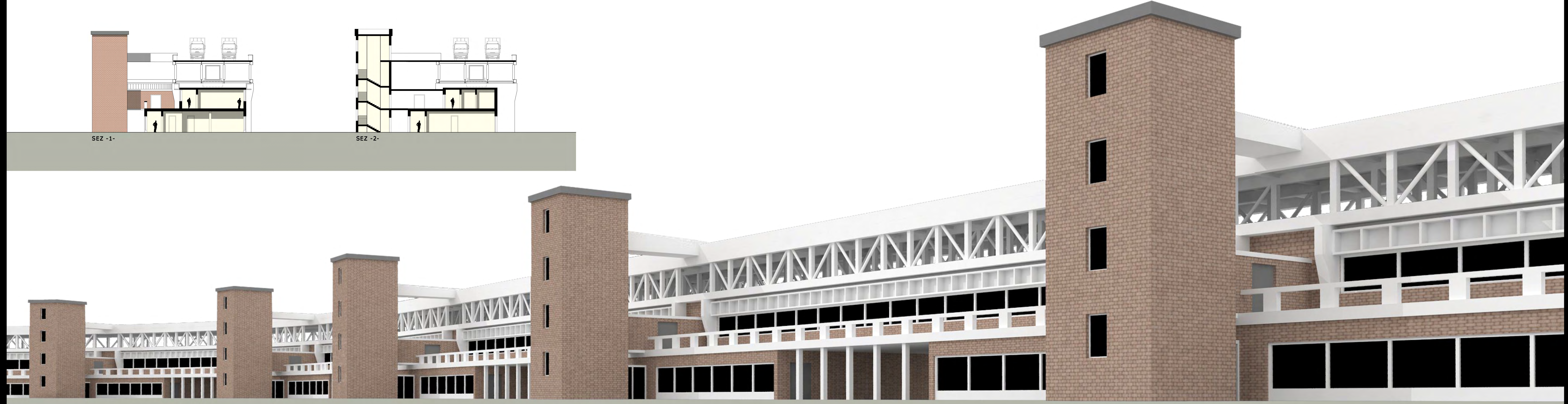


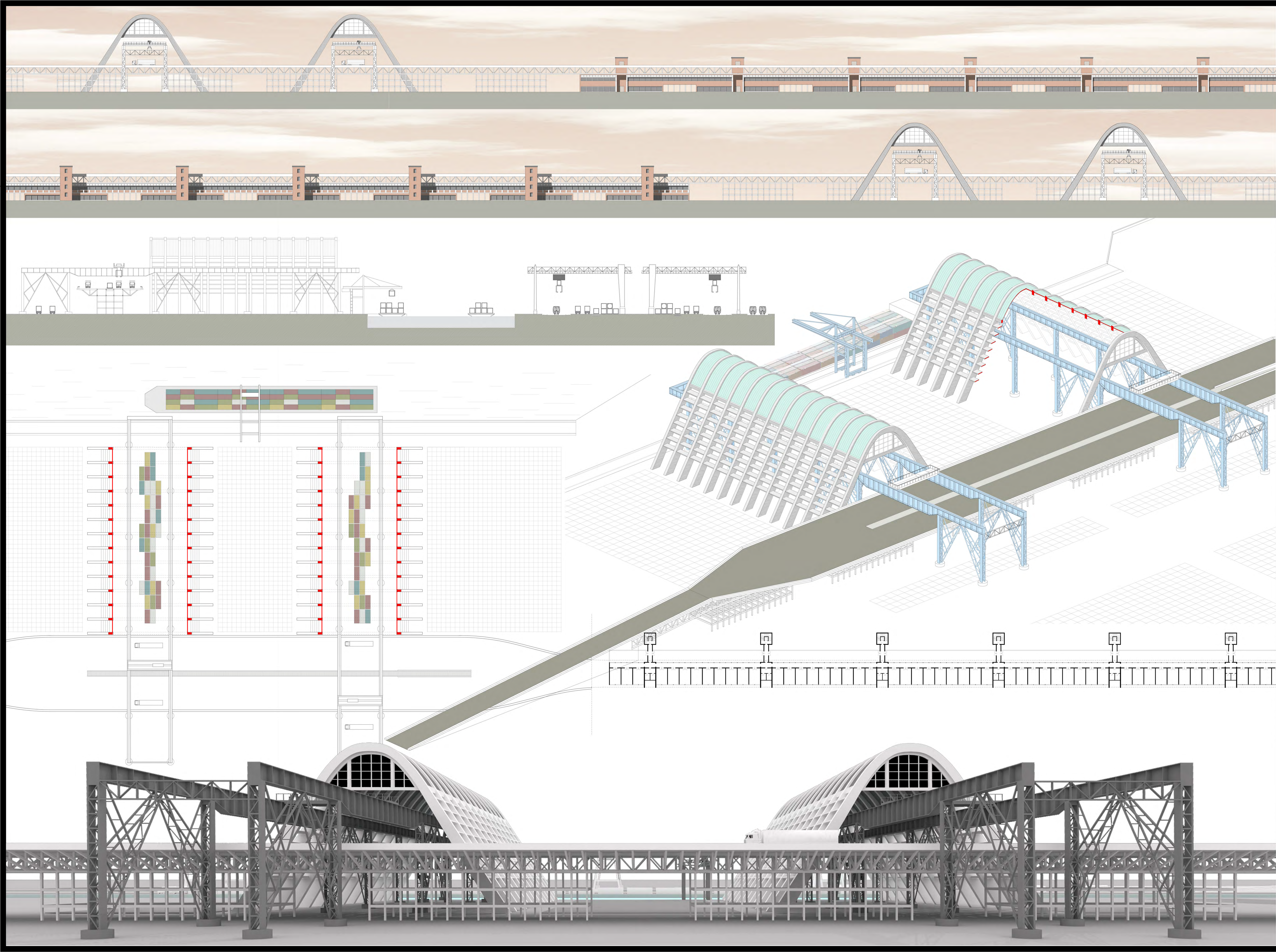
PIANTA DEL PIANO TERRENO +/- 0,00 mt

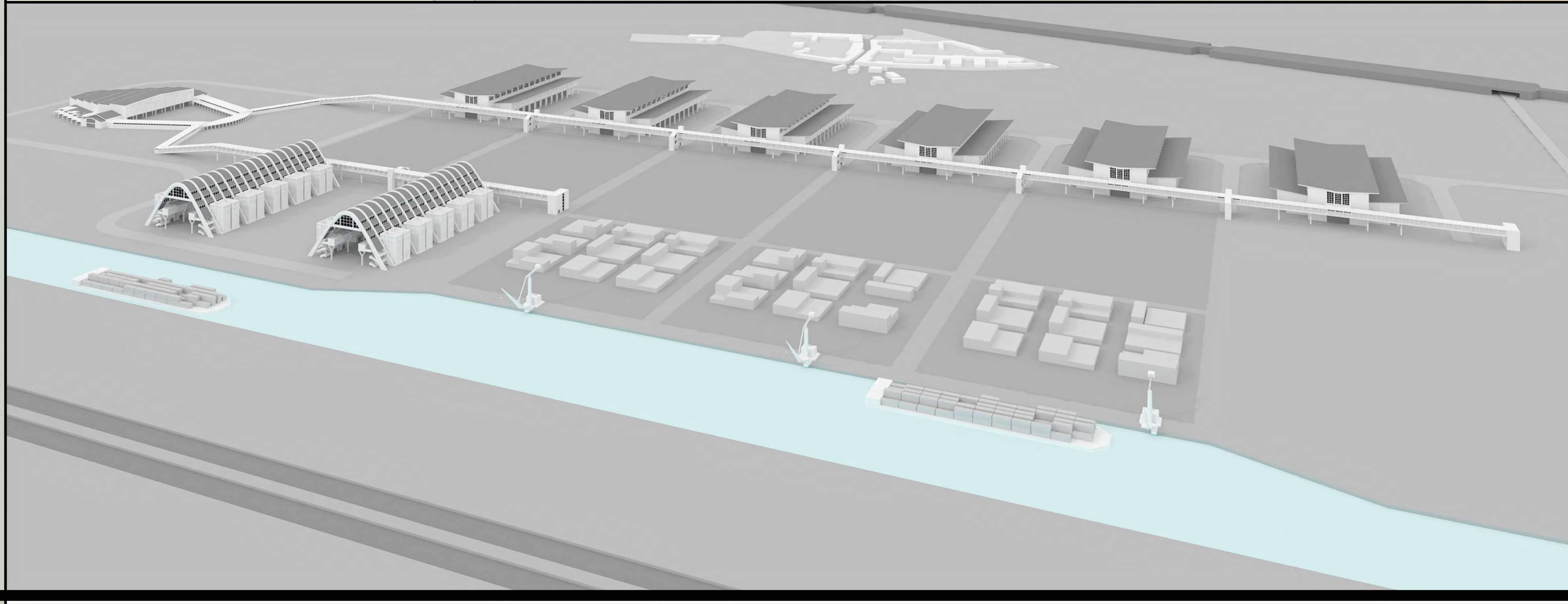
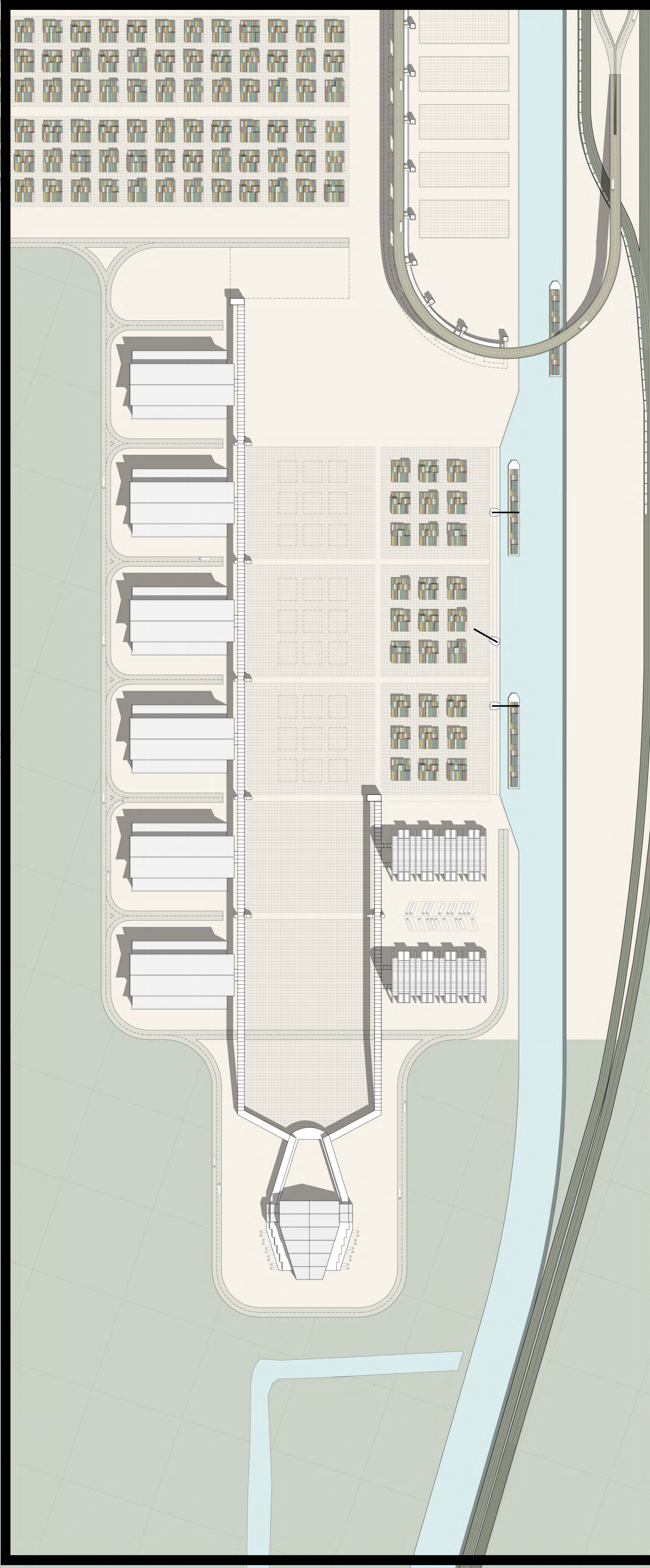


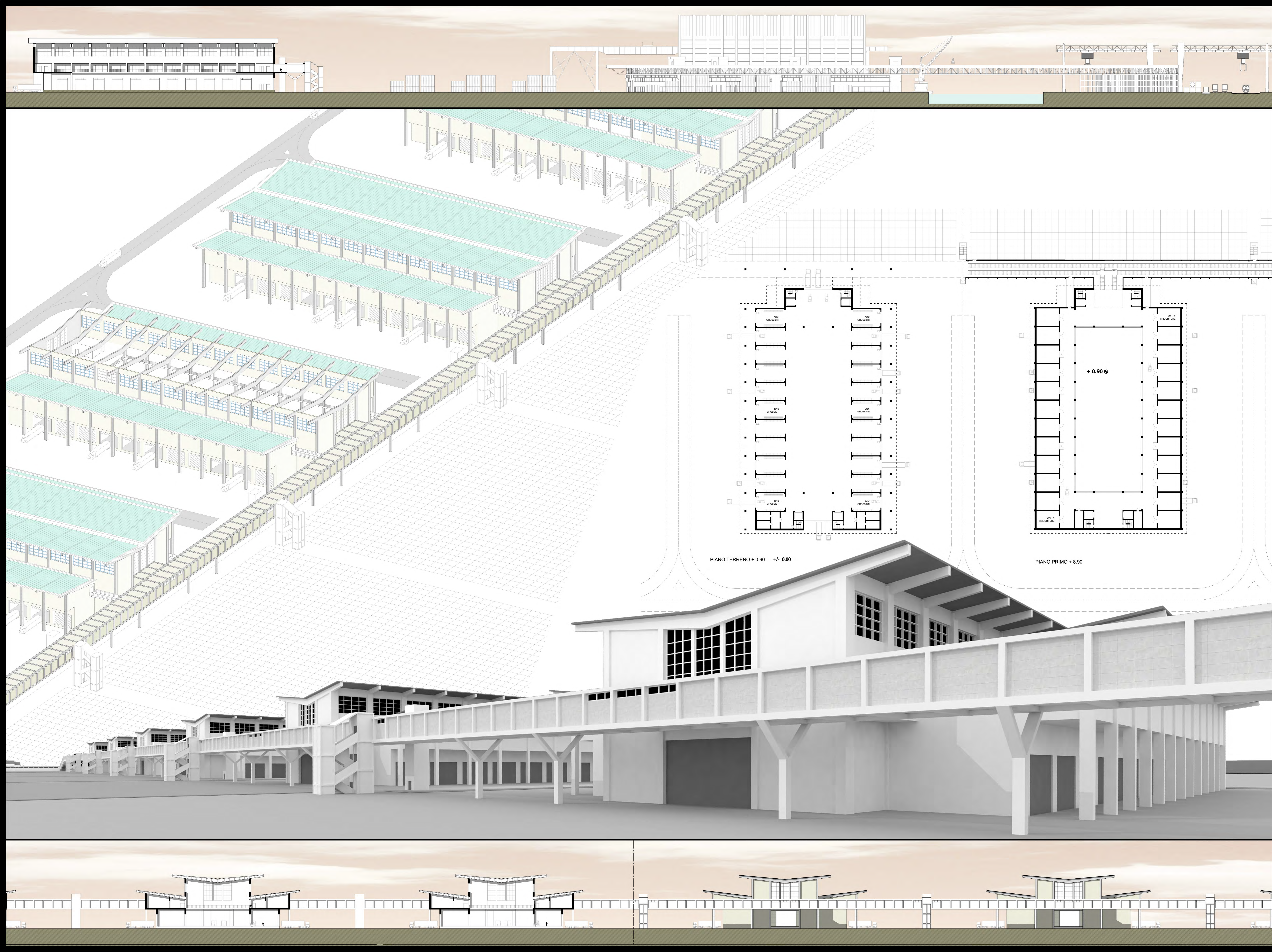
SEZ -1-

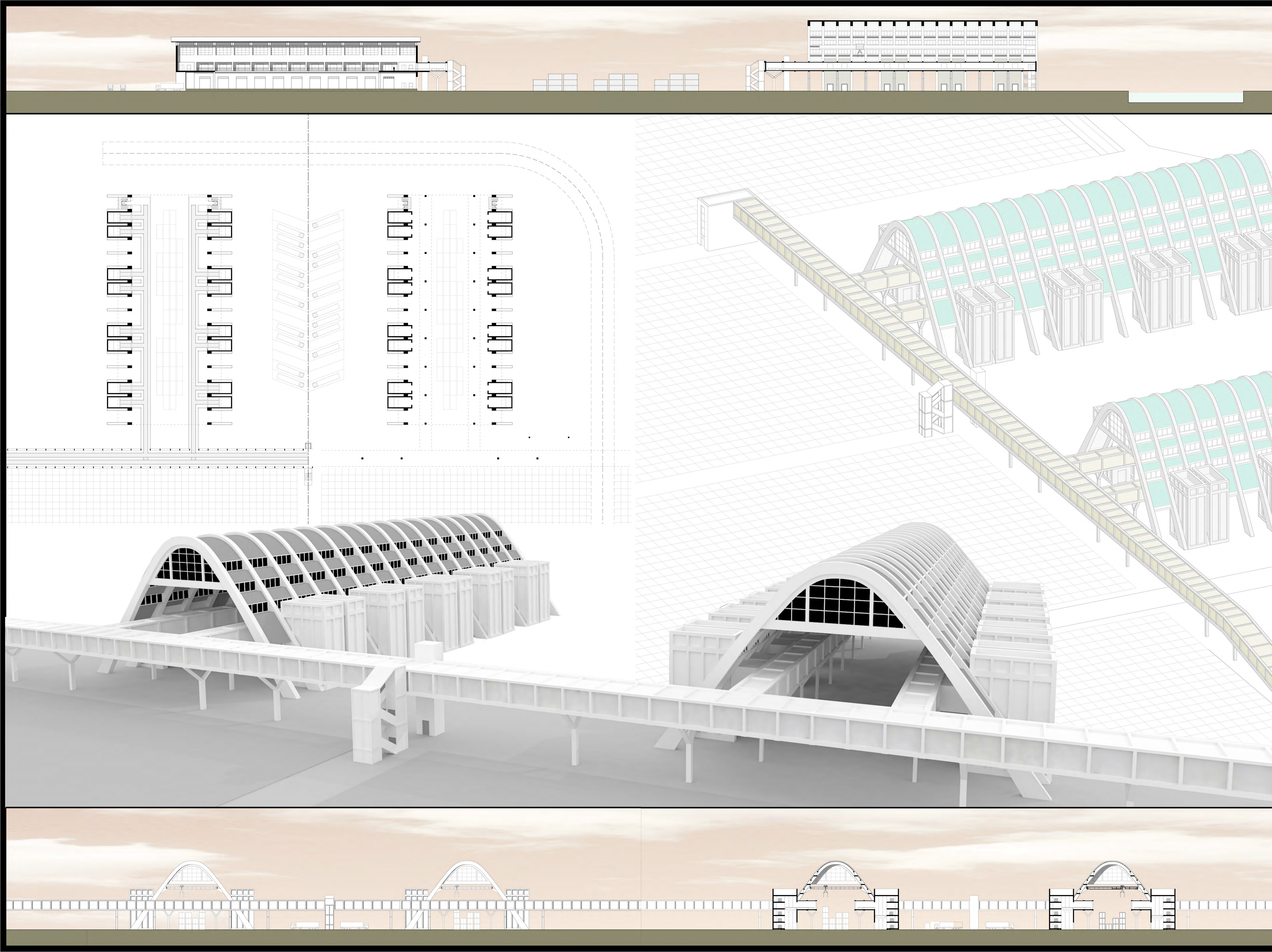
SEZ -2-











Politecnico di Milano
Facoltà di Architettura civile - Bovisa
Laurea Specialistica - Magistrale UE in Architettura
A.A. 2009/2010

RELAIORE: E. Borogna
CORRELATORI: M. Canesi, Ge. Canello,
M. Biagi, E. Mangano,
M. Muceddu, V. M. Finzi

UN NUOVO RUOLO DI MILANO PER LA CITTA' POLICENTRICA:
MELEGNANO - Scalo intermodale - Ortoimercato
ecificio meccanizzato con celle frigorifere per stoccaggio containers - scala 1:500

LAUREANDO:
Andrea Falla - 735691

