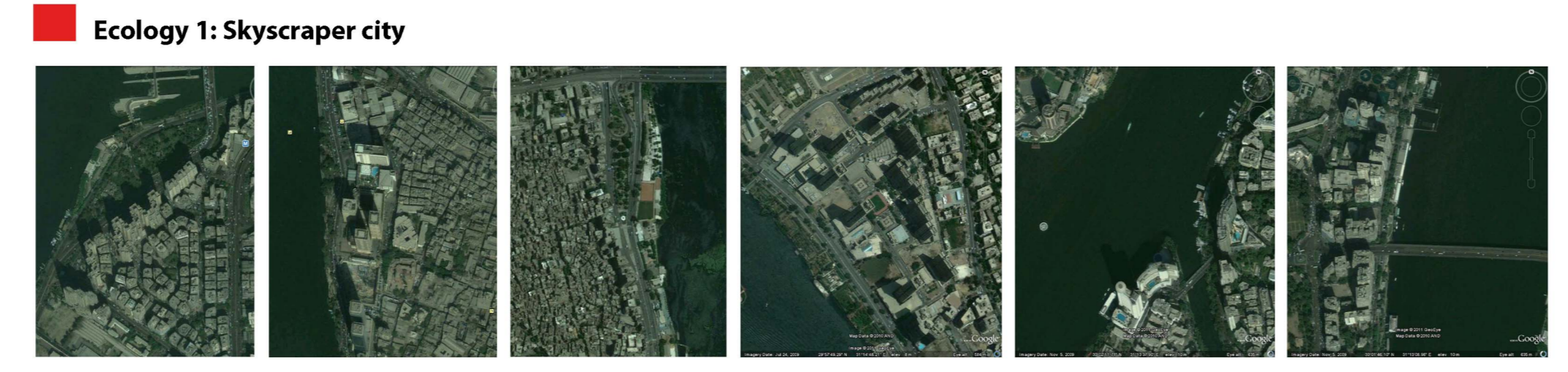


Nile Ecologies
Eight urban ecologies

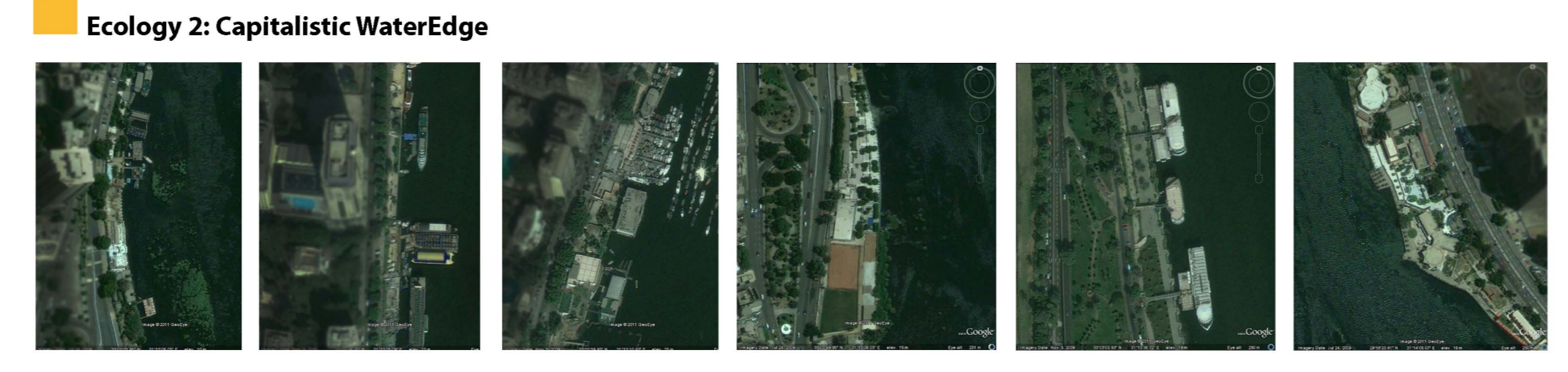


Ecology 1: Skyscraper city

Urban Ecology Structure:
Hardware: number of floors: 24-42
 Apartment area: 400-125m²
 Floor area ratio: very high
 service infrastructure supply: 70%-100%
Finware: regional enterprise, Commercial complexes, Iconic state entities
Civicware: High class officers and communities

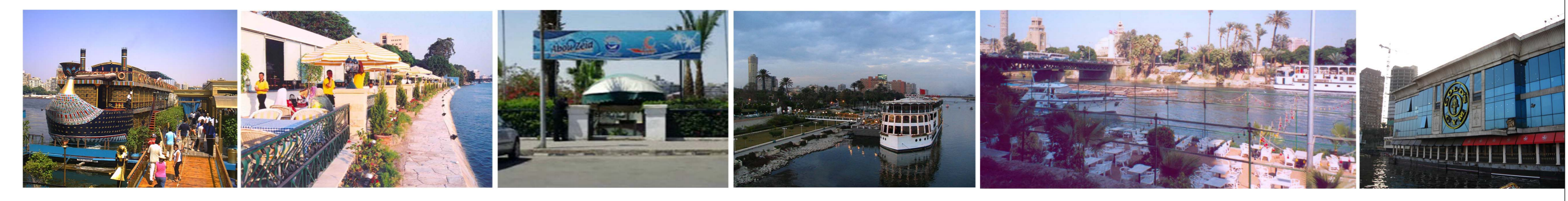


Use of the river:
 Panoramic view, Global image, direct access to main traffic artery, investment of highest Floor Area Ratio possible in Cairo and highest value per meter square



Ecology 2: Capitalistic WaterEdge

Urban Ecology Structure:
Hardware: floating/built structures directly accessible from Cornice St.
Finware: Social/Sport clubs, Floating restaurants fixed and moving, other entertainment functions
Civicware: Class defined by offered prices, Class defined by profession



Use of the river:
 Panoramic view, Global image, direct access to main traffic artery, investment of riverside entertainment due to lack of designed urban space along the river edge



Ecology 3: Smaller enterprisers city

Use of the river:
 Direct access to main traffic artery, investment of highly exposed rentable units, the best available almost only open space



Ecology 4: Private River

Use of the river:
 Panoramic view, Resort use, investment in renting, transportation alternative, embassies events by the river



Ecology 5: Cornice

Use of the river:
 Promenade, informal businesses, transportation, Nile rides



Ecology 6: Felluka Neighborhood

Use of the river:
 Free space for living, working with fishing/nile rides, meeting with similar fishermen, transportation



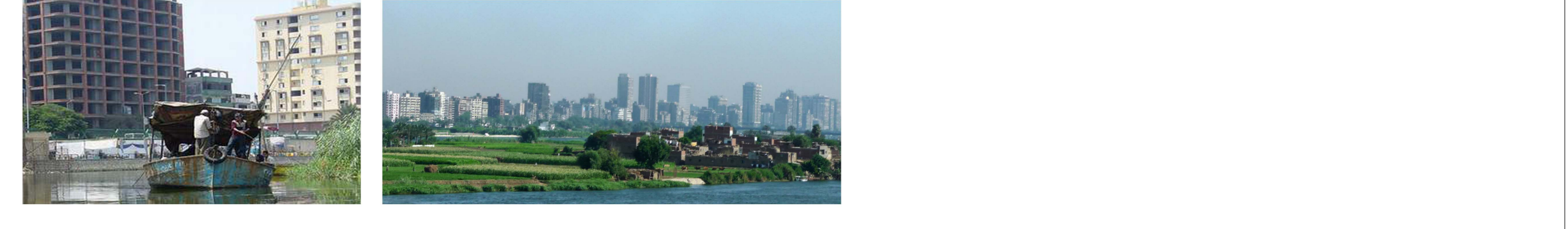
Ecology 7: State on the River

Use of the river:
 Direct access to main traffic artery



Ecology 8: Agriculture

Use of the river:
 In agriculture system, Fishing.



Level of provided services:
 30% basic
 Accessibility-Drinking water and sanitation-Security-Durability of built structure
 70% preferred
 Schools-hospitals-local job opportunity
 100% fully serviced
 all possible services are provided

Riverfront urban ecologies: eight ecologies
Users intact:
 homeless and private palace residents
 Illiterate and educated
 Local and the foreigner
 Business and pleasure

Cairo's Nilefront= Egypt microcosm