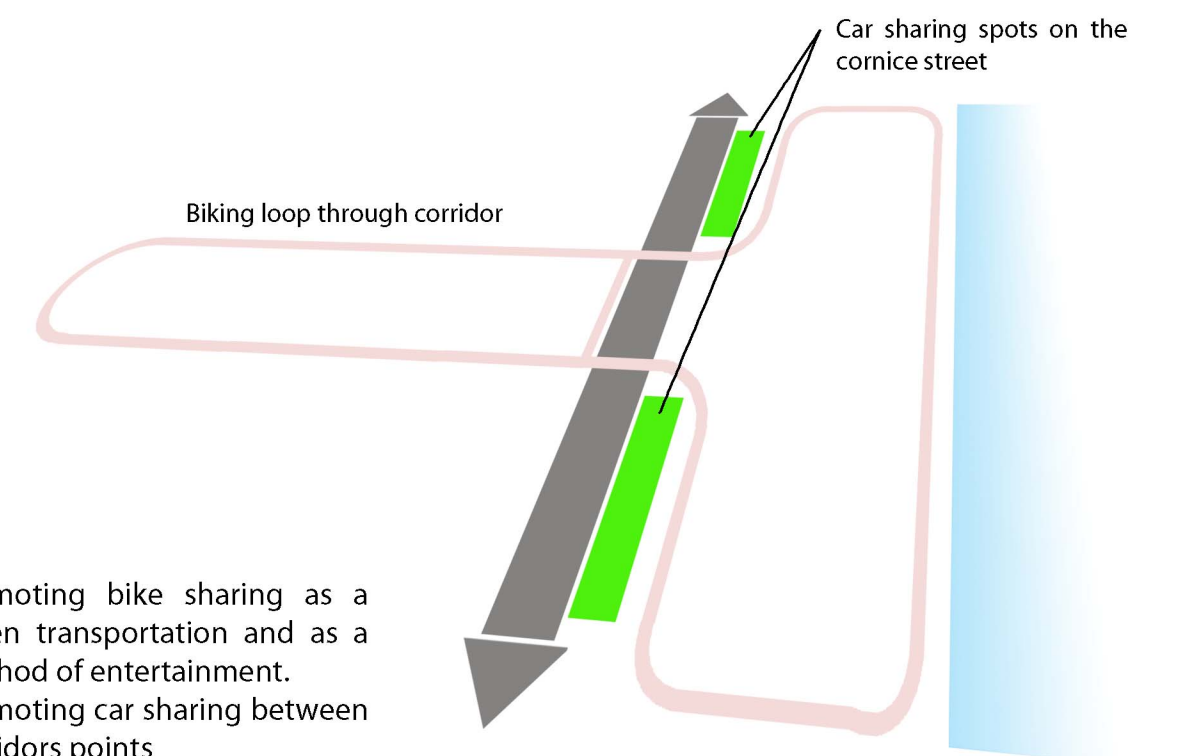
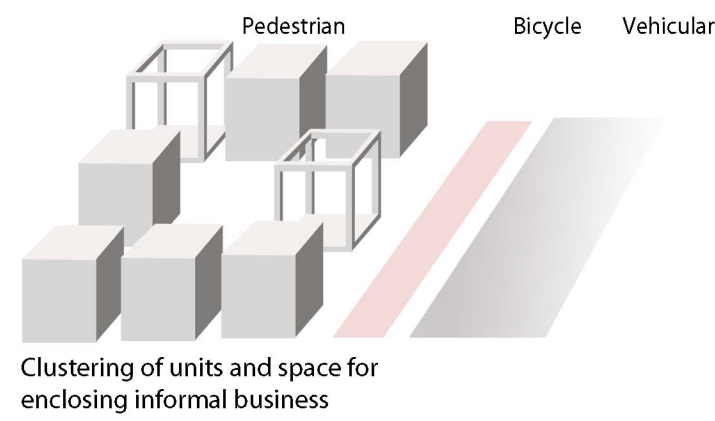
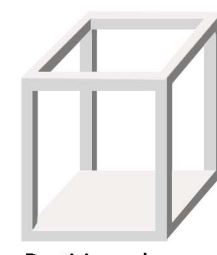
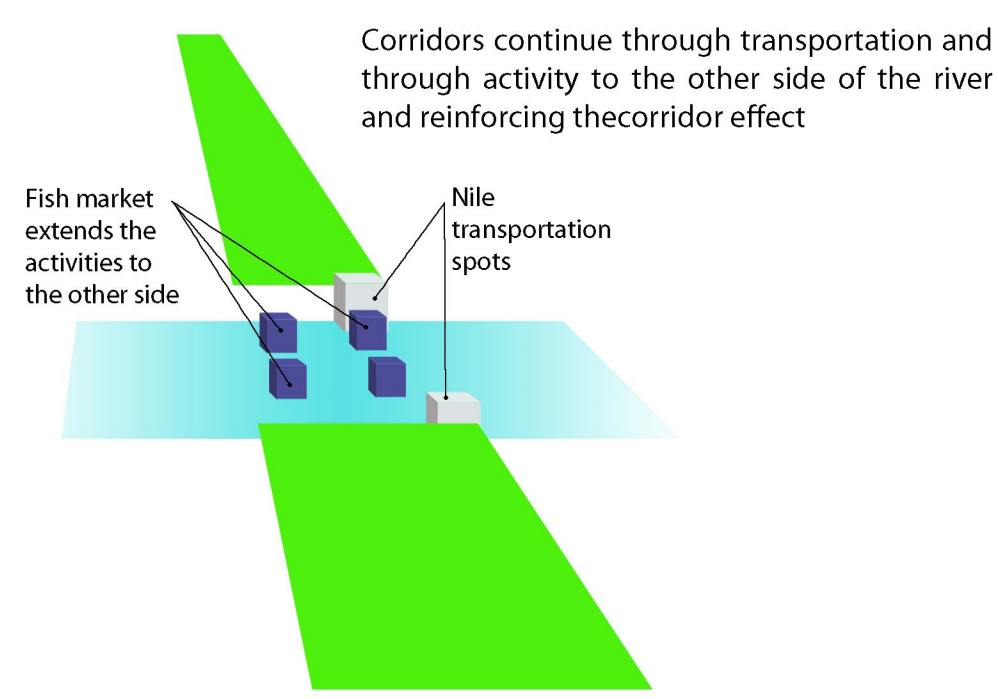


Proposing a Device

Two points and corridor

Corridor Masterplan



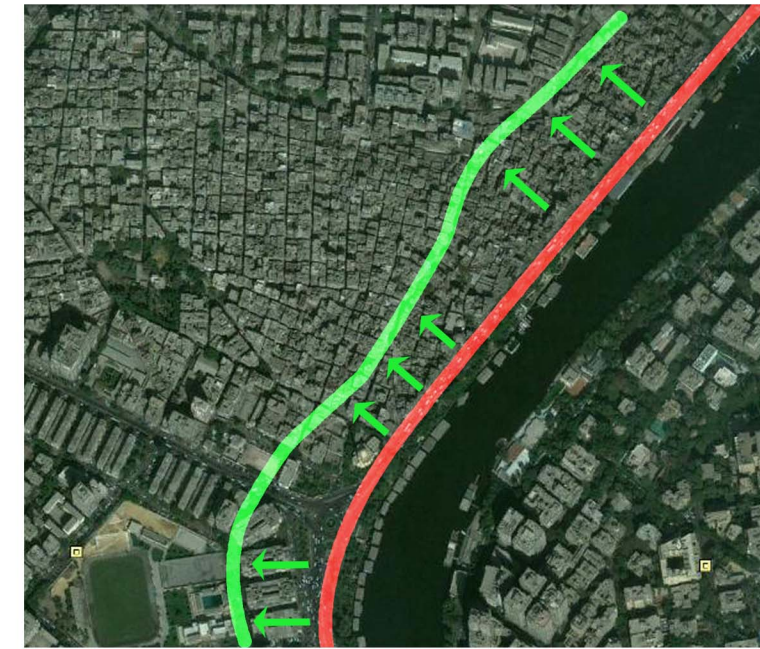
Providing closed tenable spaces and also partitioned open spaces to accept the diversity of informal and formal businesses. Units are clustered to provide pedestrian friendly environment along the vehicular corridors

Anchor point 1 - Residential Block



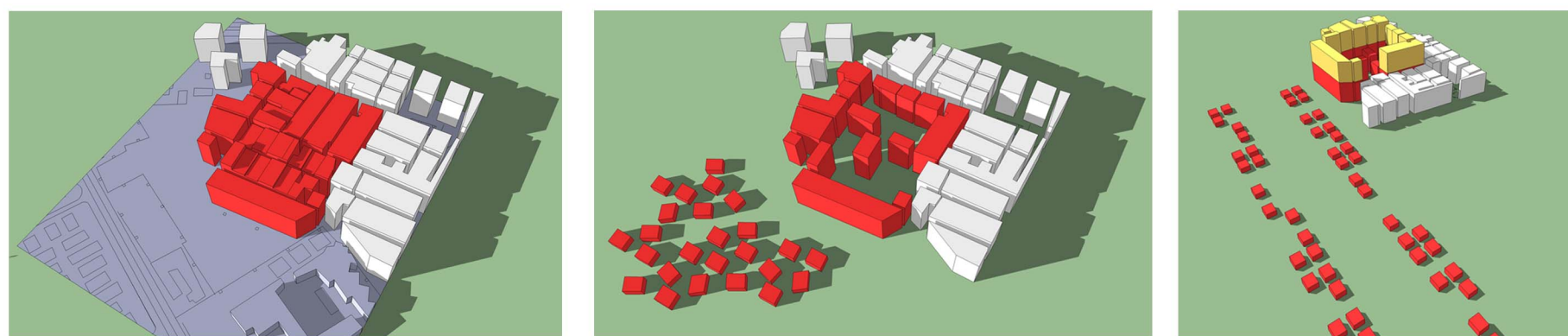
Choosing a Residential mass of the informal settlements to heal, the Chosen mass is a limited area directly connected to the connection corridor and acts as part of the inner healing point

Anchor point 2- Riverfront piazza



Moving the Cornice Street backwards to provide more room for the riverfront activities and outdoor space.

Residential Block intervention

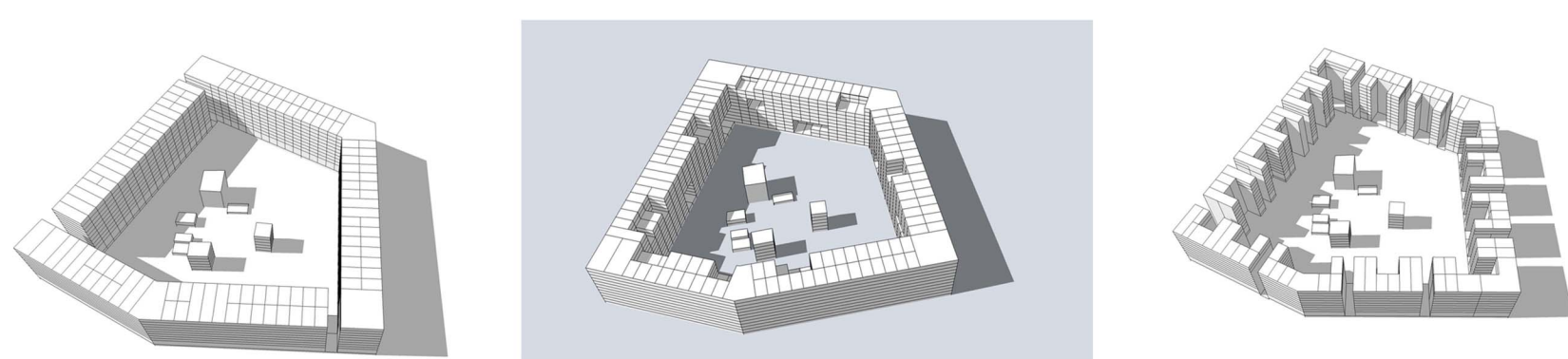


The concept is to break this very compact mass and provide more space for light, air, and services of the residents and also release the energy within to activate the corridor



Preserving buildings in good state and introduce multiple functions. promoting artistic exposition space on the unfinished facades of the preserved buildings. The deteriorated state buildings would be cleared and replaced in densification housing.

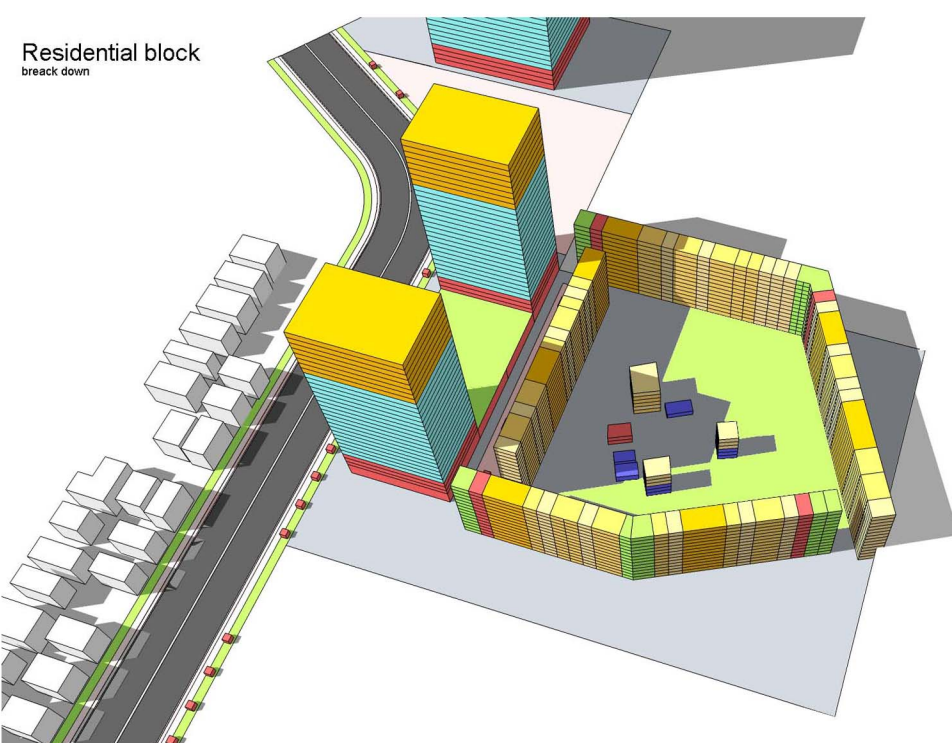
Evolution concept



Khaled ibn Elwalid mosque
Khaled ibn Elwalid library
A landmark and a cultural building which will be preserved. A museum along with a pedestrian piazza are suggested to revitalise the point as public waterfront.



Moving the Nile Bouys to be distributed along the Nile banks in Cairo, and dismantling the deteriorating ones. Introduce multiple museums. Present some of them as museums for the times they were built in. Open up the riverfront and allow public access to the river



Introduce a diverse program of uses and residential units scale per floor. Provide wide corridors and open meeting places hosting anchoring activity within the vertical structure. Preserve good state buildings and introduce diverse small servicing business.