

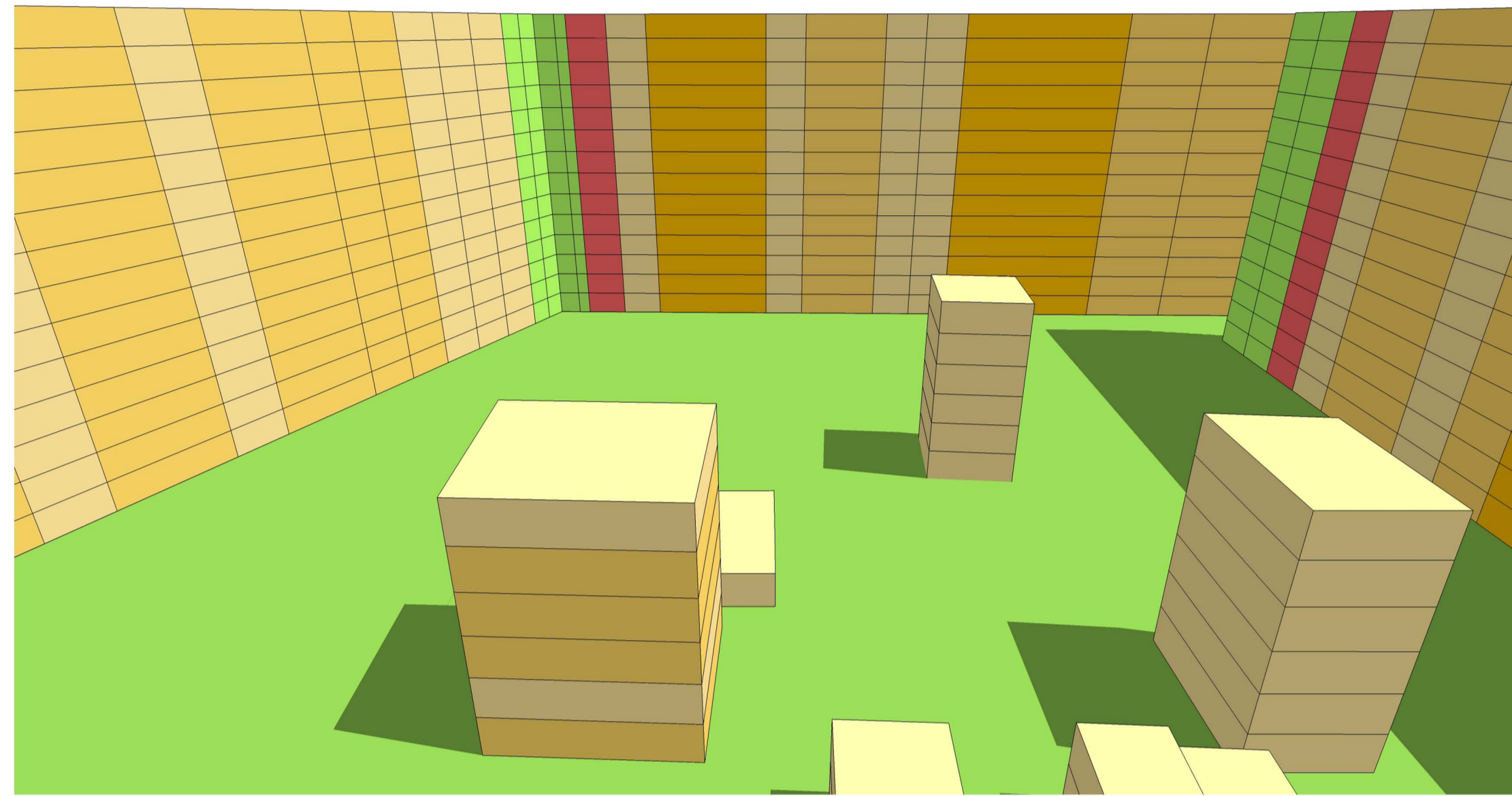
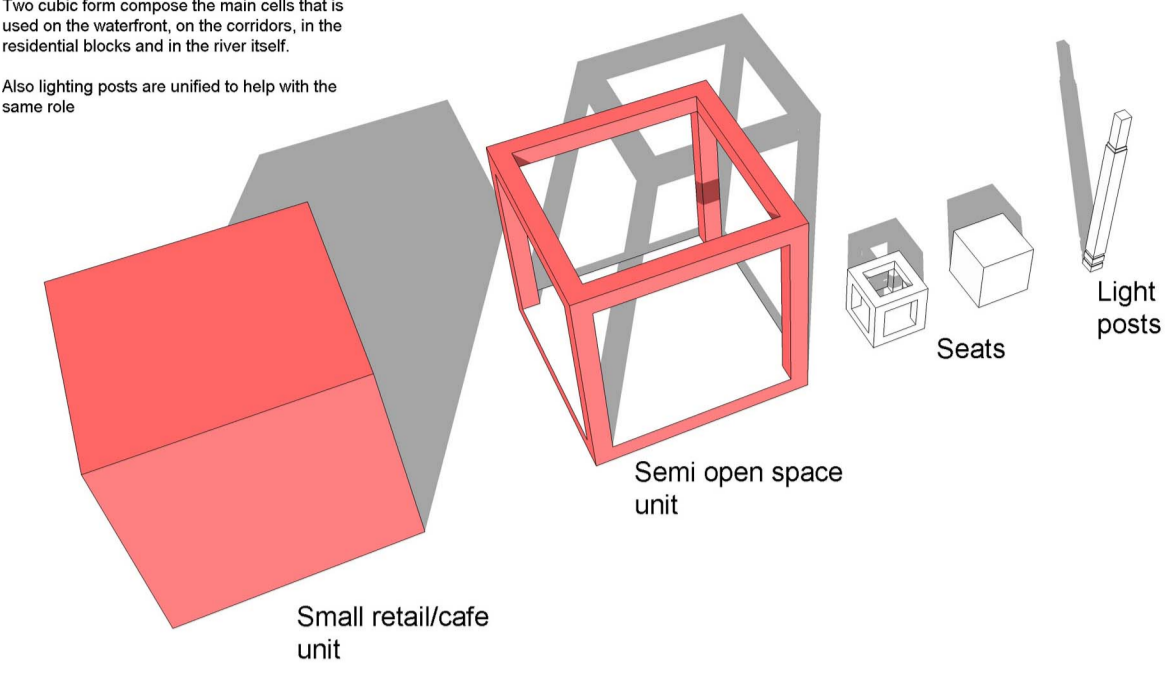
Urban Image

Urban Character

Connection between Nilefront space and the city using distinctive urban furniture which introduces a specific urban image and therefore an urban character for the Nile-related urban space.

Two cubic form compose the main cells that is used on the waterfront, on the corridors, in the residential blocks and in the river itself.

Also lighting posts are unified to help with the same role.



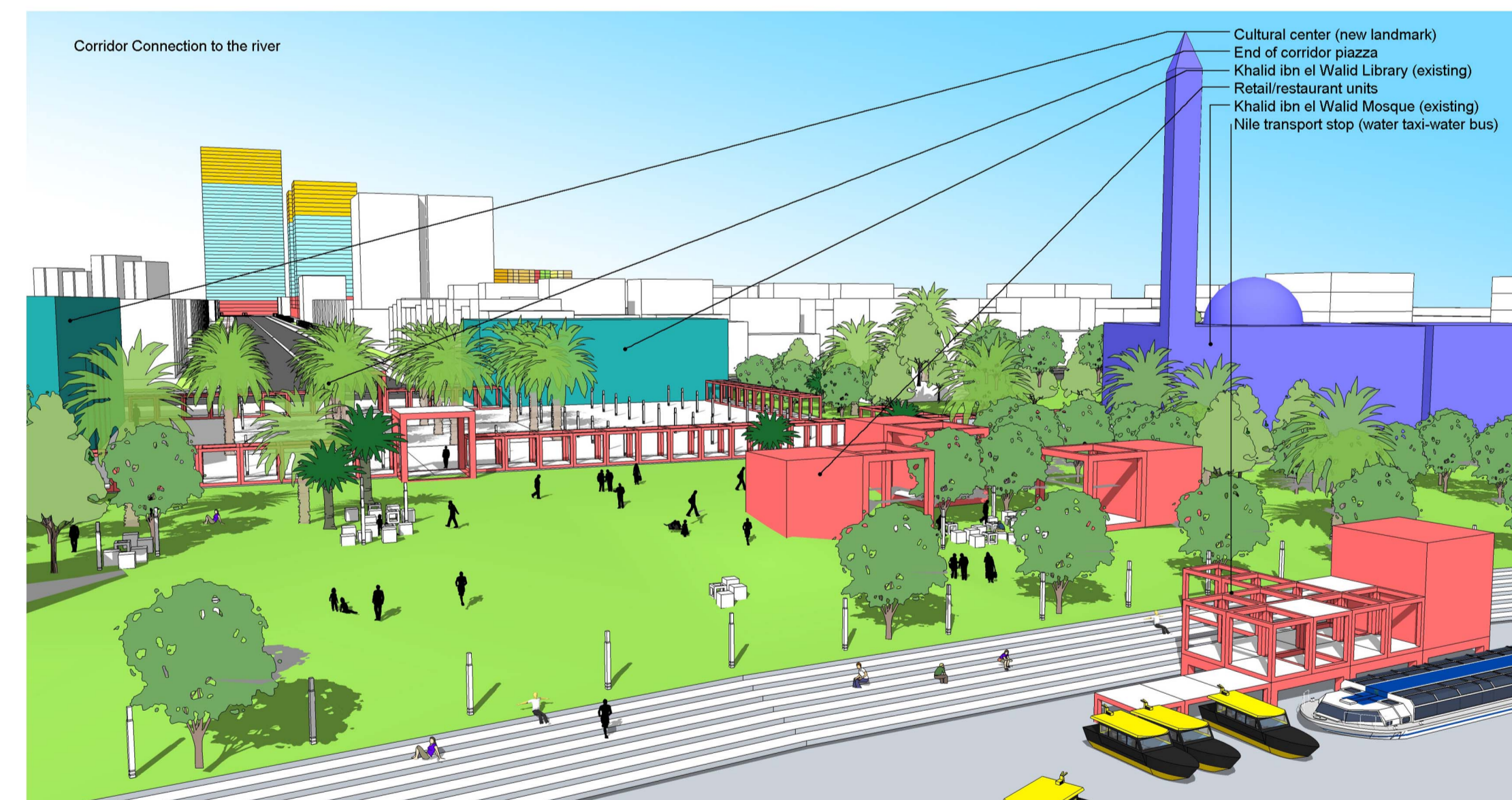
Water edge clubs

Water edge clubs would keep their properties but in an open to public space. The property can then be rented to tenants according to market and control needs. New retail units would be added to reinforce the character of the waterfront space.



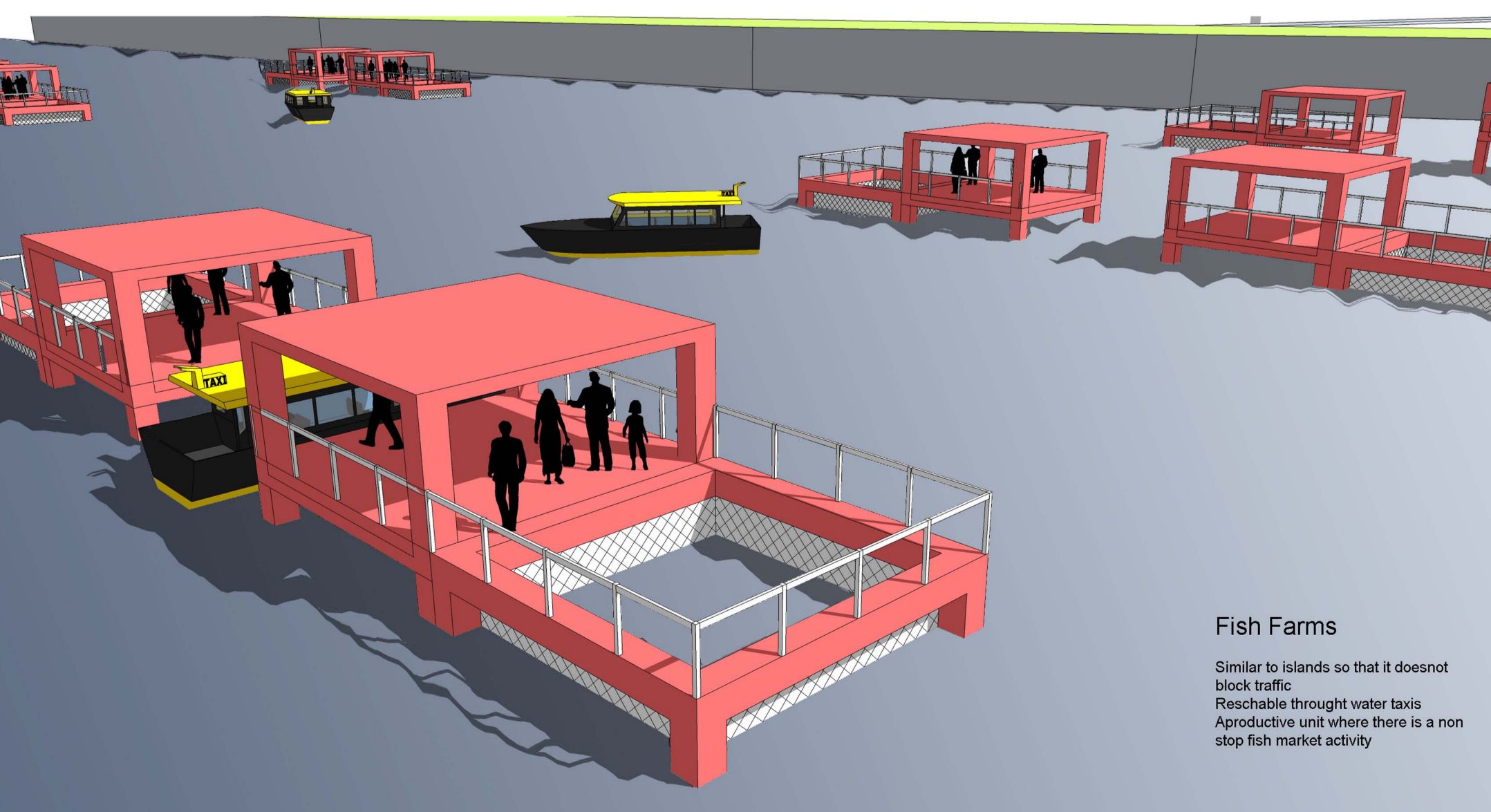
Informal settlements on Waterfront

Uncleared residential buildings turns to 90% artistic and cultural activity. The facades of these unclear buildings are used as a space for occasional artistic demonstrations.



Corridor Connection to the river

- Cultural center (new landmark)
- End of corridor piazza
- Khalid ibn al Walid Library (existing)
- Retail/restaurant units
- Khalid ibn al Walid Mosque (existing)
- Nile transport stop (water taxi-water bus)



Fish Farms

Similar to islands so that it does not block traffic. Resizable through water taxis. A productive unit where there is a non stop fish market activity.

Residential block

The block would introduce a continuation of the urban space in the vertical dimension.

Retail units, gathering areas and wide corridors allow for an extended space for walking, jogging, children playing and neighbors meeting.

Reinforcing the character of the connecting corridor, the facade of the block is adopting the same character of the corridor's urban furniture.

