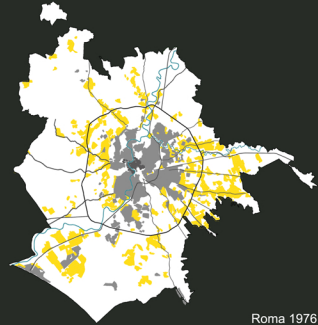
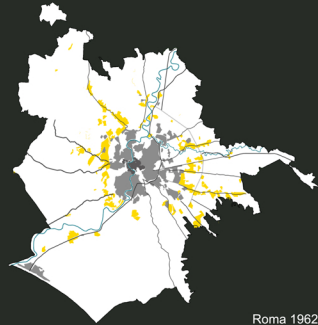


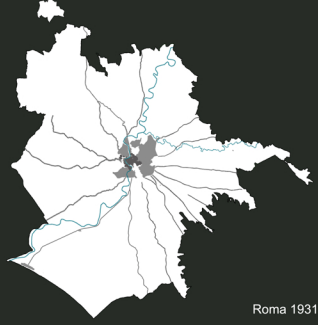
Roma 2010



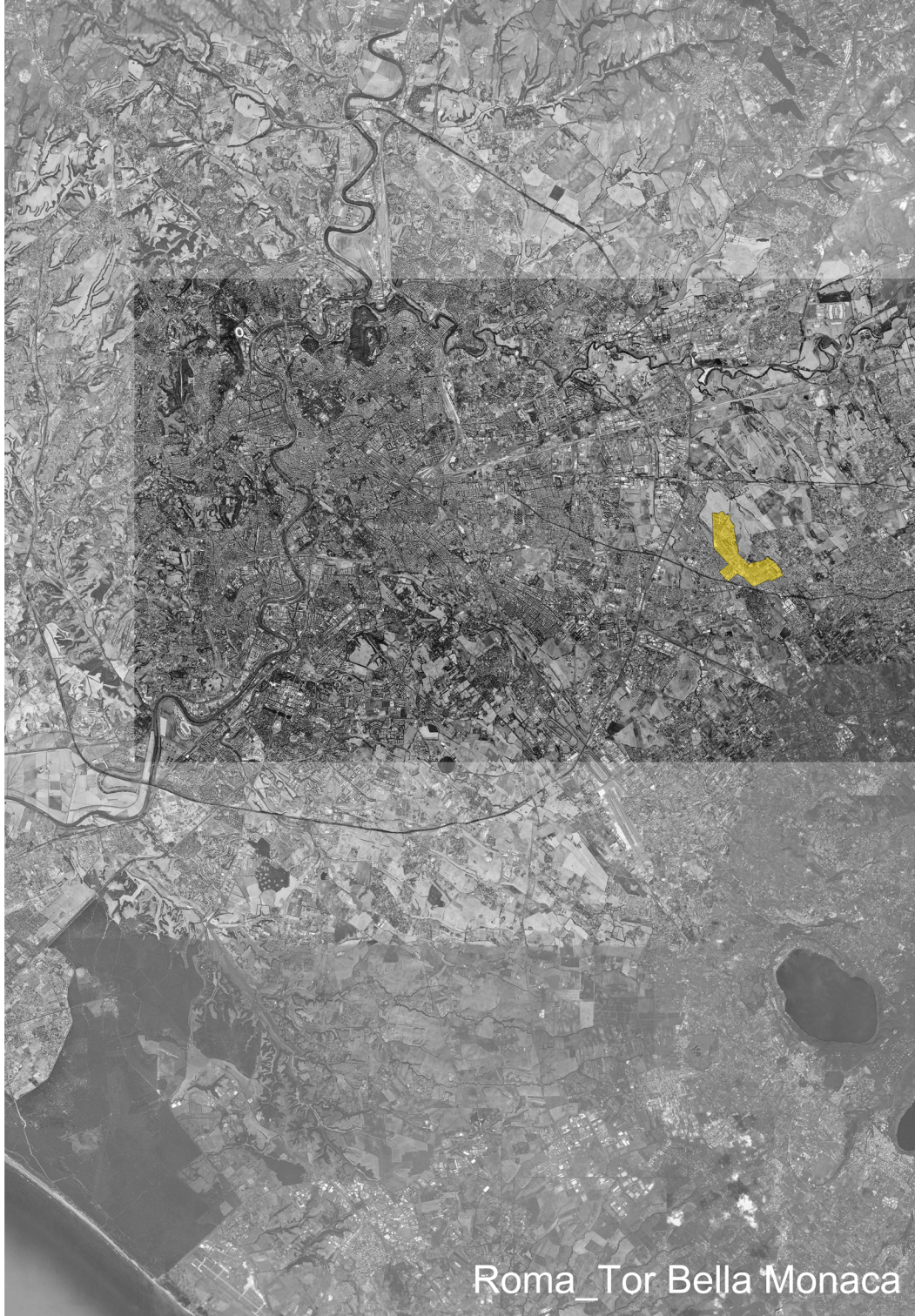
Roma 1976



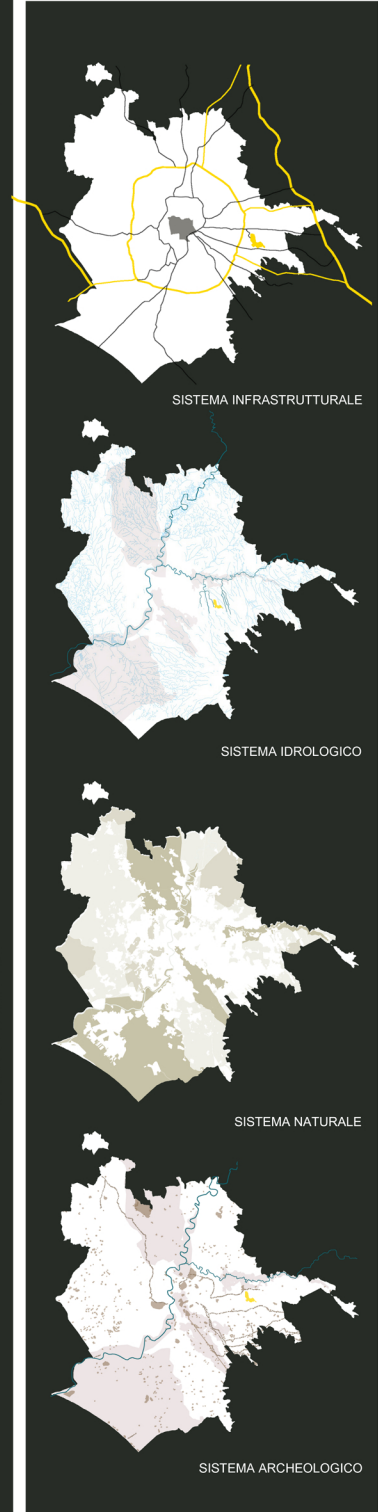
Roma 1962



Roma 1931



Roma_Tor Bella Monaca

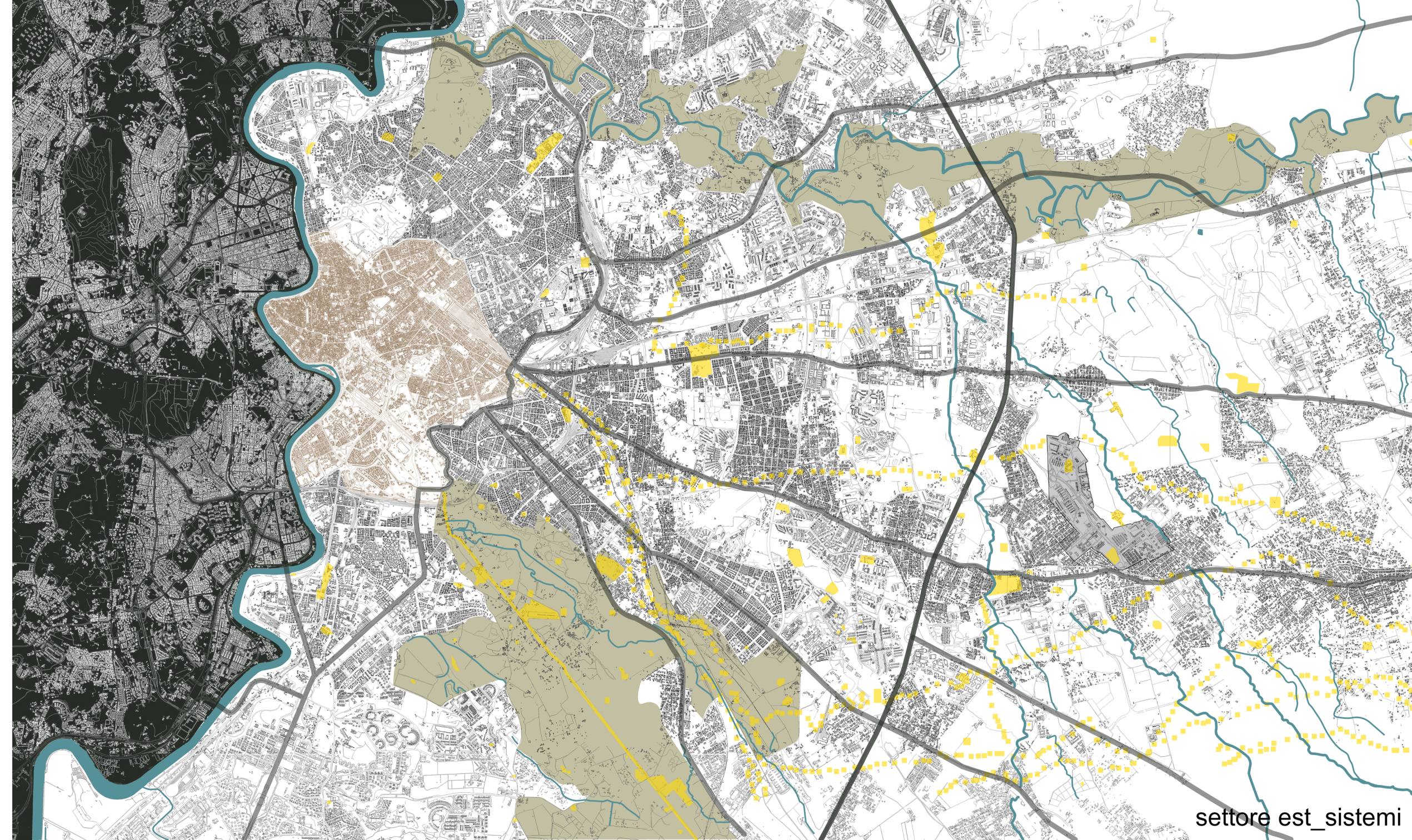


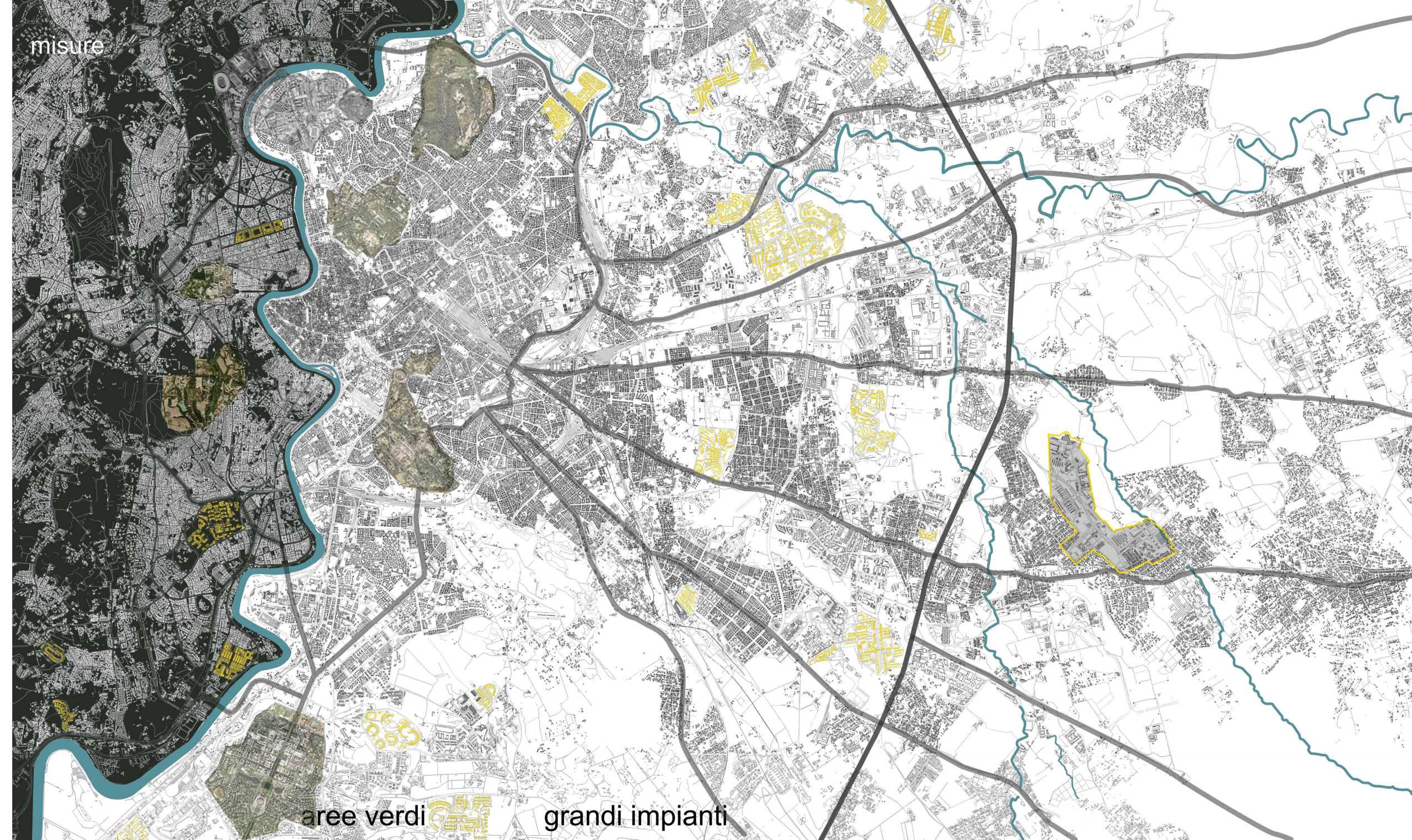
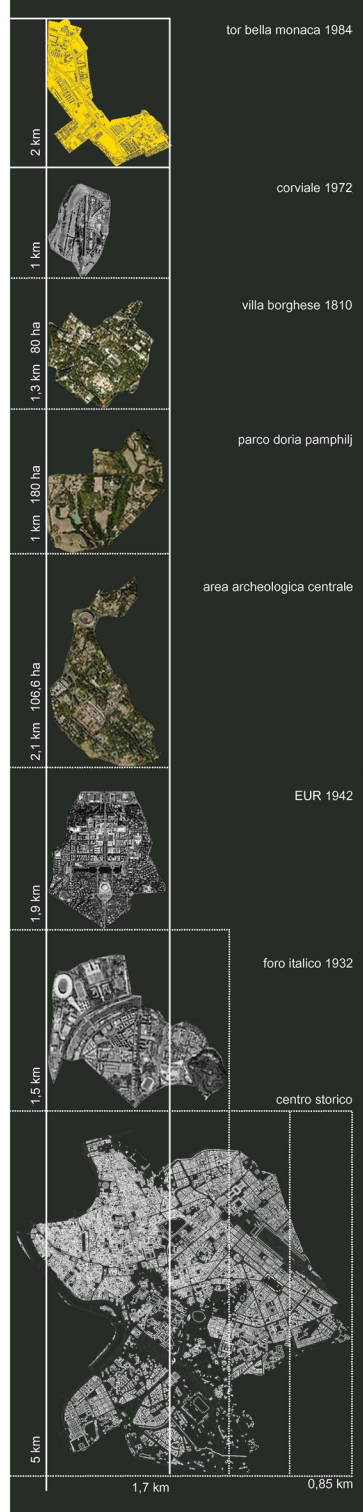
SISTEMA INFRASTRUTTURALE

SISTEMA IDROLOGICO

SISTEMA NATURALE

SISTEMA ARCHEOLOGICO





misure

aree verdi

grandi impianti

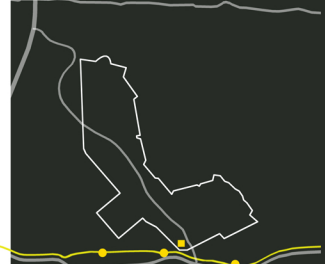
A.A. 2010/11, 20 luglio 2011
Relatore: Prof. Guya Benati
Correlatore: Arch. Juan Carlos Dall'Asta

Studenti: Francesca Galandolfo 736225
Egle Mariani 736688
Elsa Merletti 736590

ROMA TOR BELLA MONACA:
sezioni urbane e suoli abitati



Politecnico di Milano
Facoltà di Architettura e Società
Corso di Studi in Architettura
Progettazione Architettonica Urbana



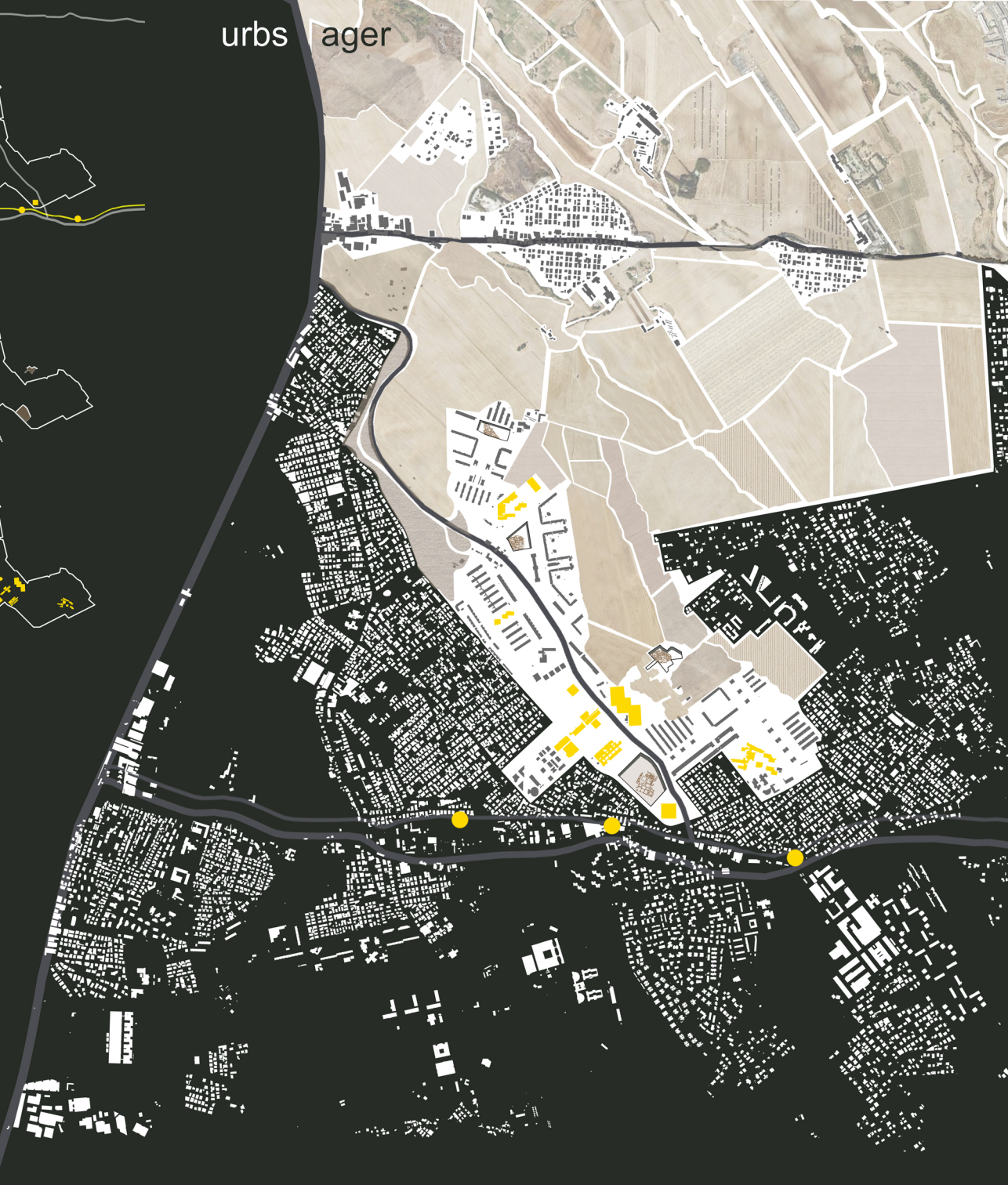
CONNESSIONI



ARCHEOLOGIA



CENTRALITA'





PIENO_VUOTO



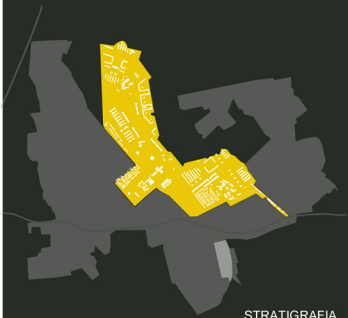
SPAZIO APERTO INDIFFERENZIATO



TESSUTO

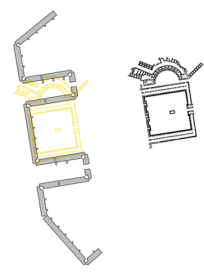


TRACCIATI



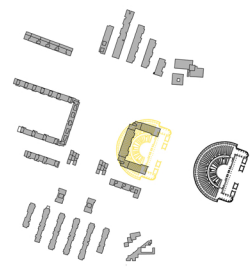
STRATIGRAFIA

MISURE TBM_ROMA ANTICA



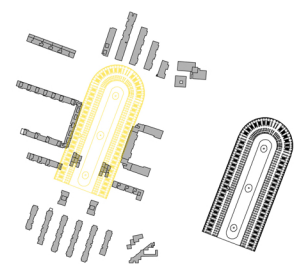
edifici R5

foro di Traiano
112 d.C.



edifici M8

teatro di Marcellus
17 a.C.



edifici M8

stadio di Domitianus
85 d.C.

edifici residenziali ISOLATI



h. 6m

edifici in LINEA



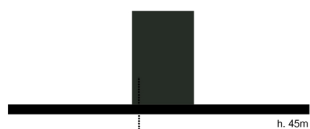
h. 16m

edifici a CORTE



h. 22m - 25m

edifici a TORRE



h. 45m

edifici

SPAZI APERTI_SEZIONI
distanza media tra gli edifici



d. 5m

d. 3m

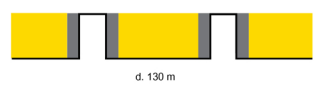


d. 5m

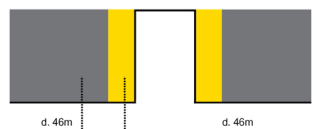
d. 7m

d. 13m

d. 10m



d. 130 m



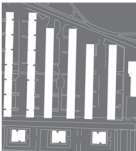
d. 46m

d. 46m

parcheggi

giardini

TESSUTI TBM_ROMA METROPOLITANA



tessuto tbn R8



tessuto Torre Angela



tessuto tbn R6



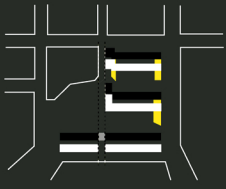
tessuto centro Roma



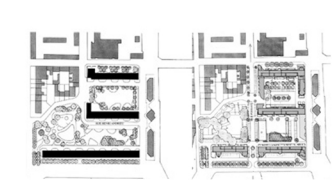
tessuto tbn R5



tessuto periferia



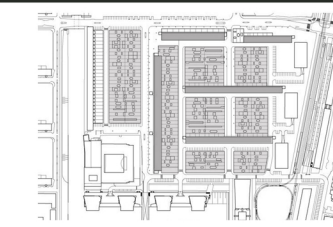
SOTTRARRE



ATELIER CASTRO-DENISSOF-CASI_LORIENT, quay de rohan_1988-96



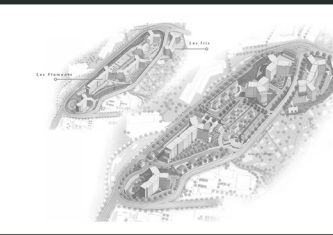
DENSIFICARE



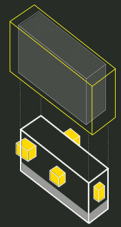
BAUKUH_AMSTERDAM, bakemabaart-geuzenveld_2003-05



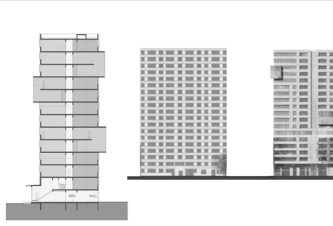
FRAMMENTARE



AGENCE ANTOINE GRUMBACH_MARSEILLE, les flamants_2001-04



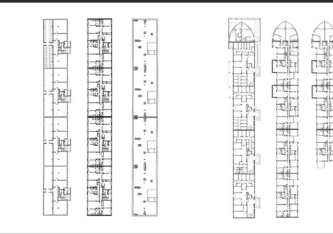
AGGIUNGERE



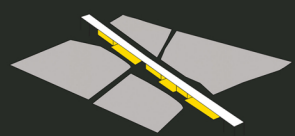
AGENCE GRIFO_IVRY sur SEINE, rue gargarine_2009



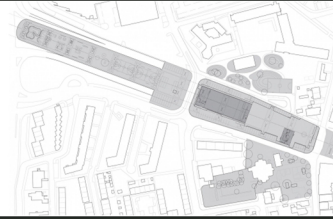
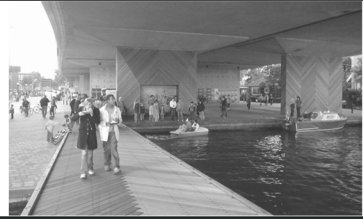
MODELLARE



ATELIER CASTRO-DENISSOF-CASI_LORIENT, barre république_1996-03



ABITARE



NL ARCHITECTS_AMSTERDAM, zaamstad_2003.06

