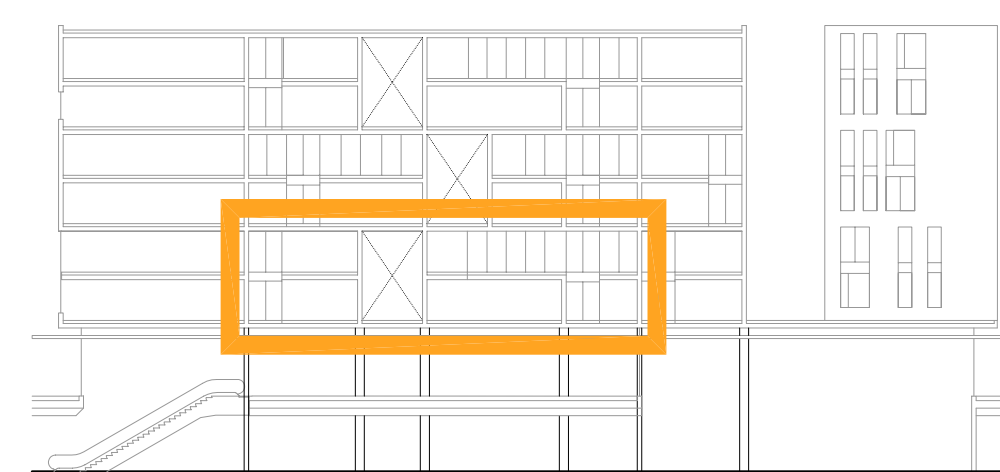
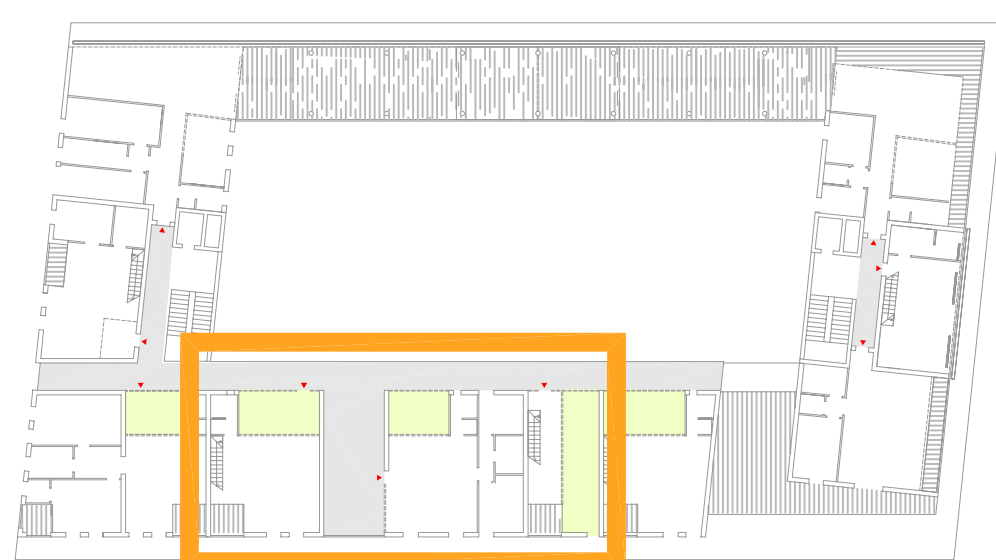
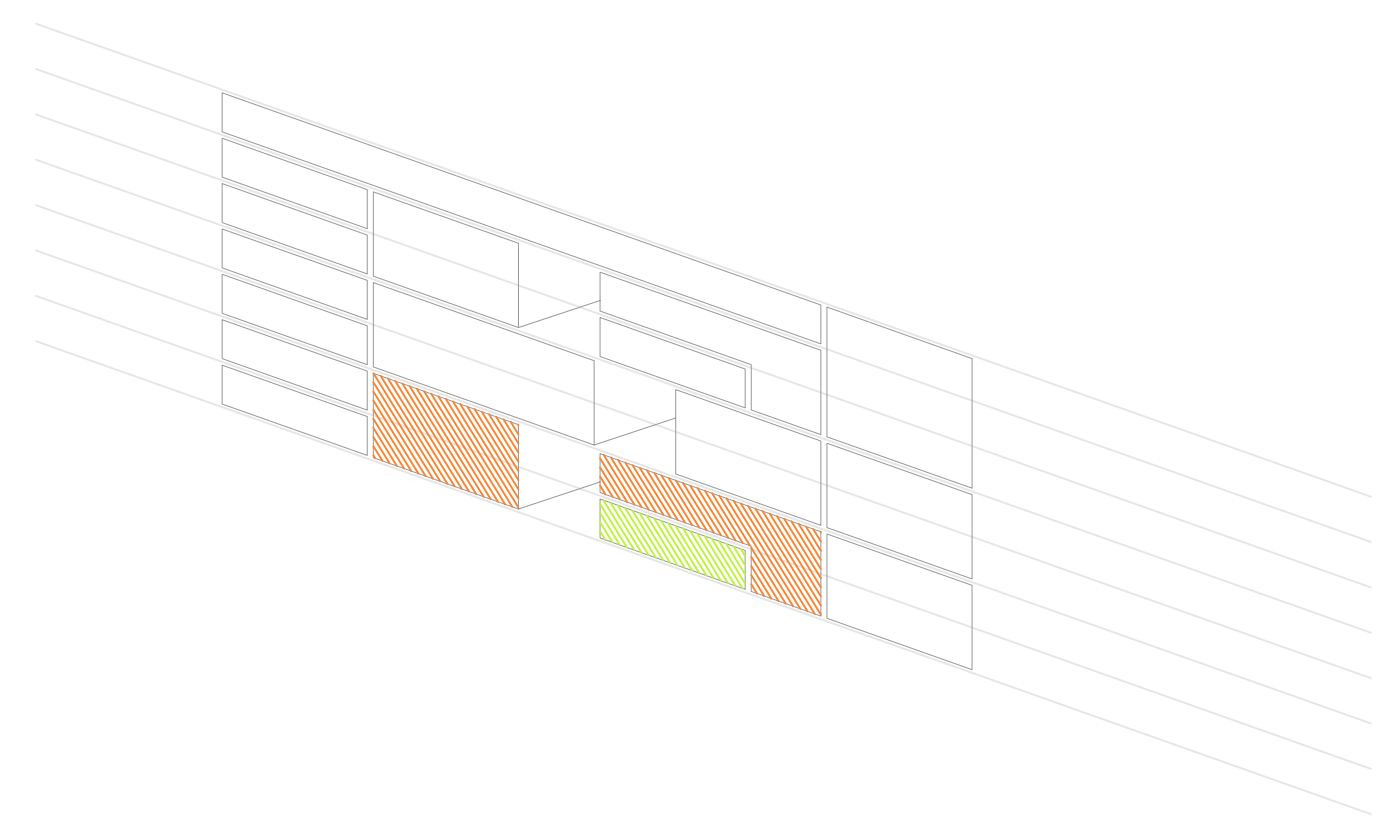


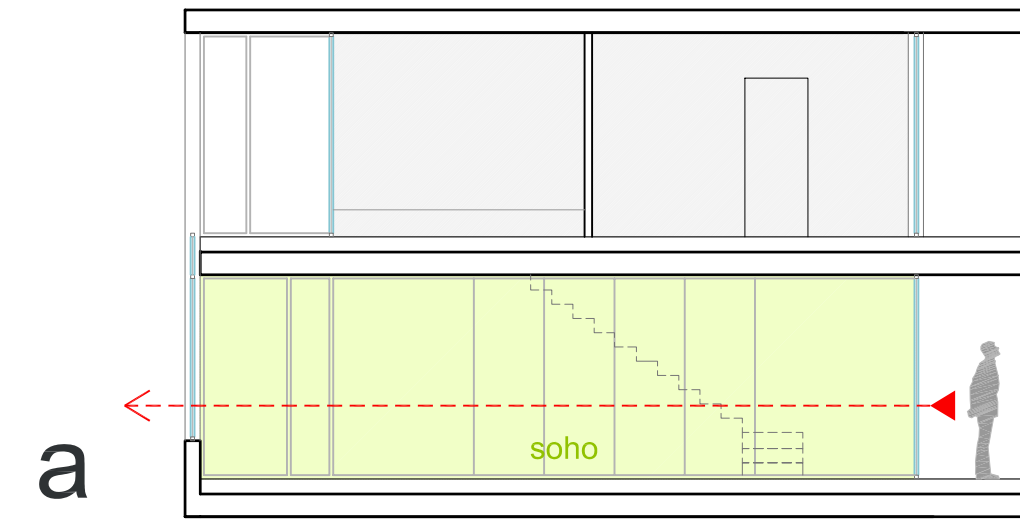
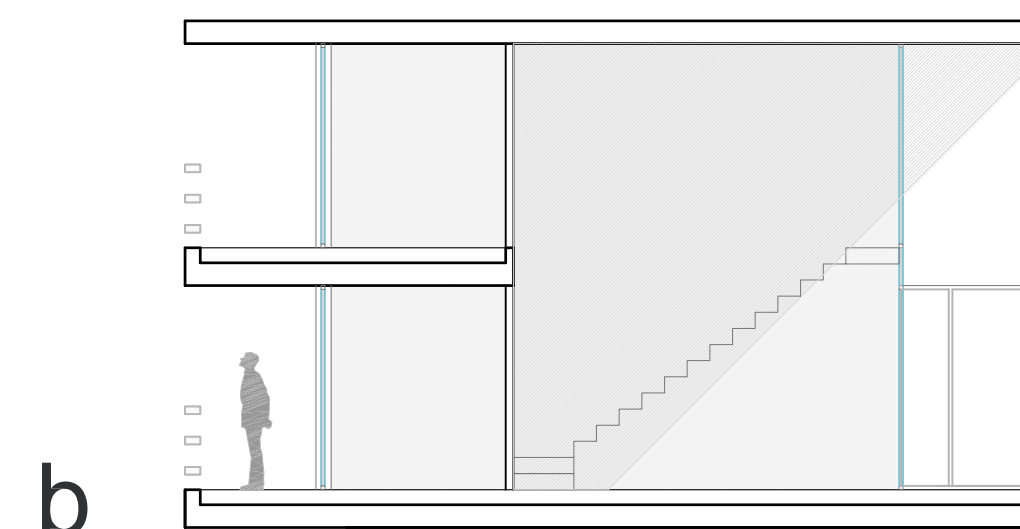
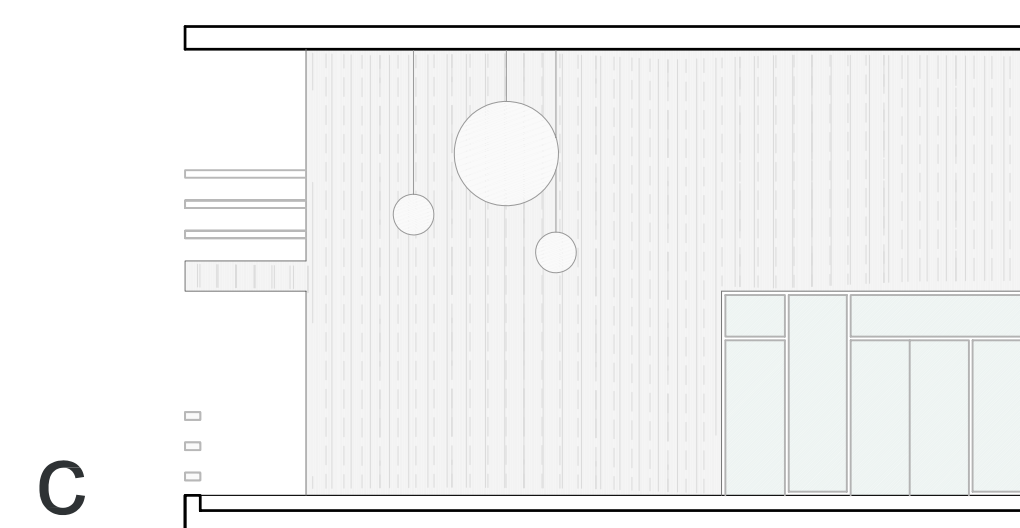
SCHEMI AGGREGATIVI



Politecnico di Milano
 Facoltà di Architettura e società
 a. a. 2010/2011



PIANTE E SEZIONI



LEGENDA

1. soho
2. soggiorno
3. pranzo
4. cucina
5. bagno
6. deposito
7. letto
8. studio
9. terrazza
10. loggia

LABORATORIO DI LAUREA
IL NUOVO CENTRO DELLA GRANDE BERGAMO

Relatore
 Prof. Giuseppe Marinoni
 Correlatore:
 Arch. Tommaso Mettifogo

Studente
 Claudio Turrini
 208231

PIANTE PIANI TIPO
 SEZIONI
 Scala 1:100

08

