

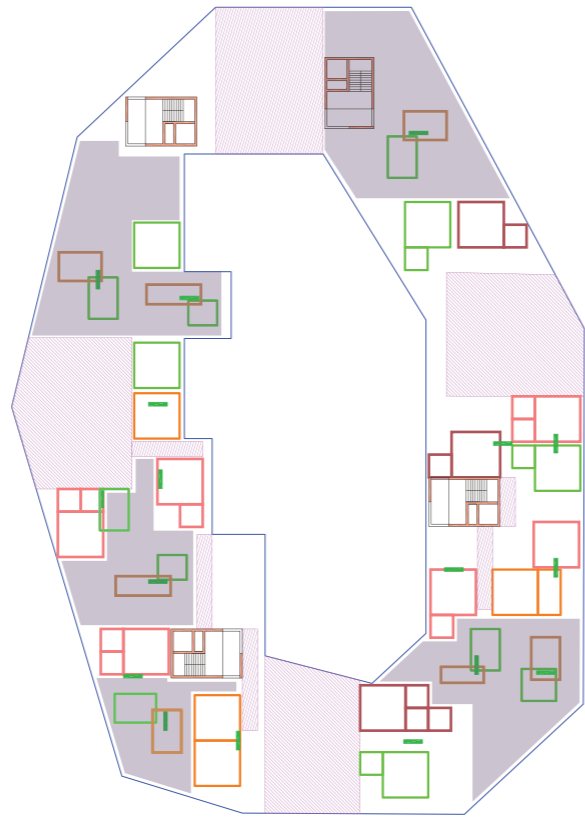
COLLECTIVE DREAM

Since we are over 7 billion people in the world, and the cost of the land is continuously increasing, we have to reconsider our way to live our life. The main concept at the base of the configuration of our cities are public spaces. They have created our idea of community. Live in a strong individualization in terms of functional spaces is not sustainable anymore, in social and scientific terms, too.

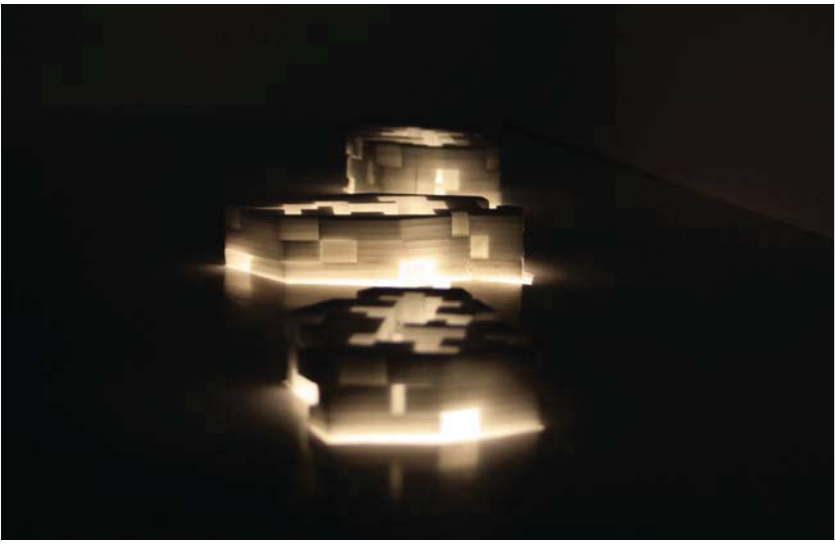
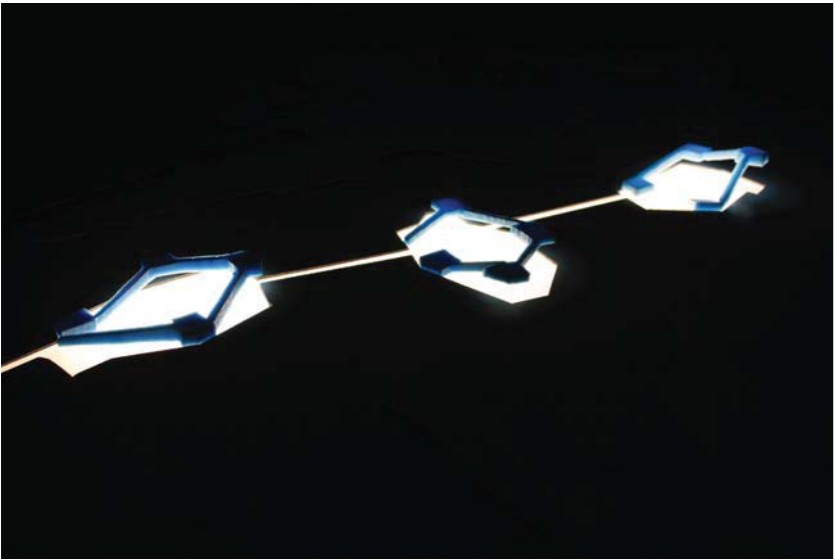
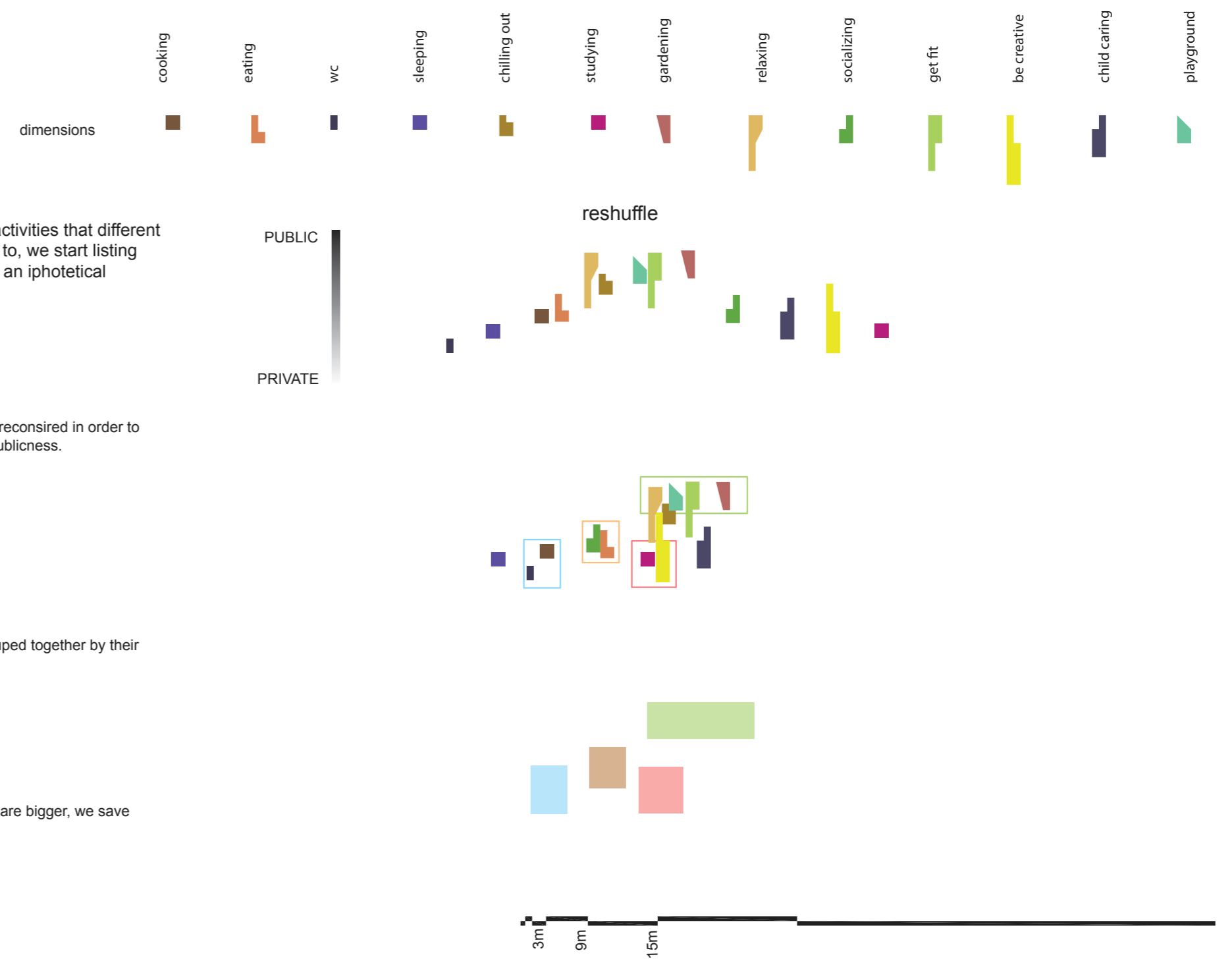
Taking on the counterpart the Block and its mass, we realized that it is about affordability, about simplified building process, and about huge flexibility of spaces. The most important thing is that the block is about living together.

With the increase of income, the world city dwellers-went to increase their living activities. Thi is only possible in a sustainable way by constructing mass housing.

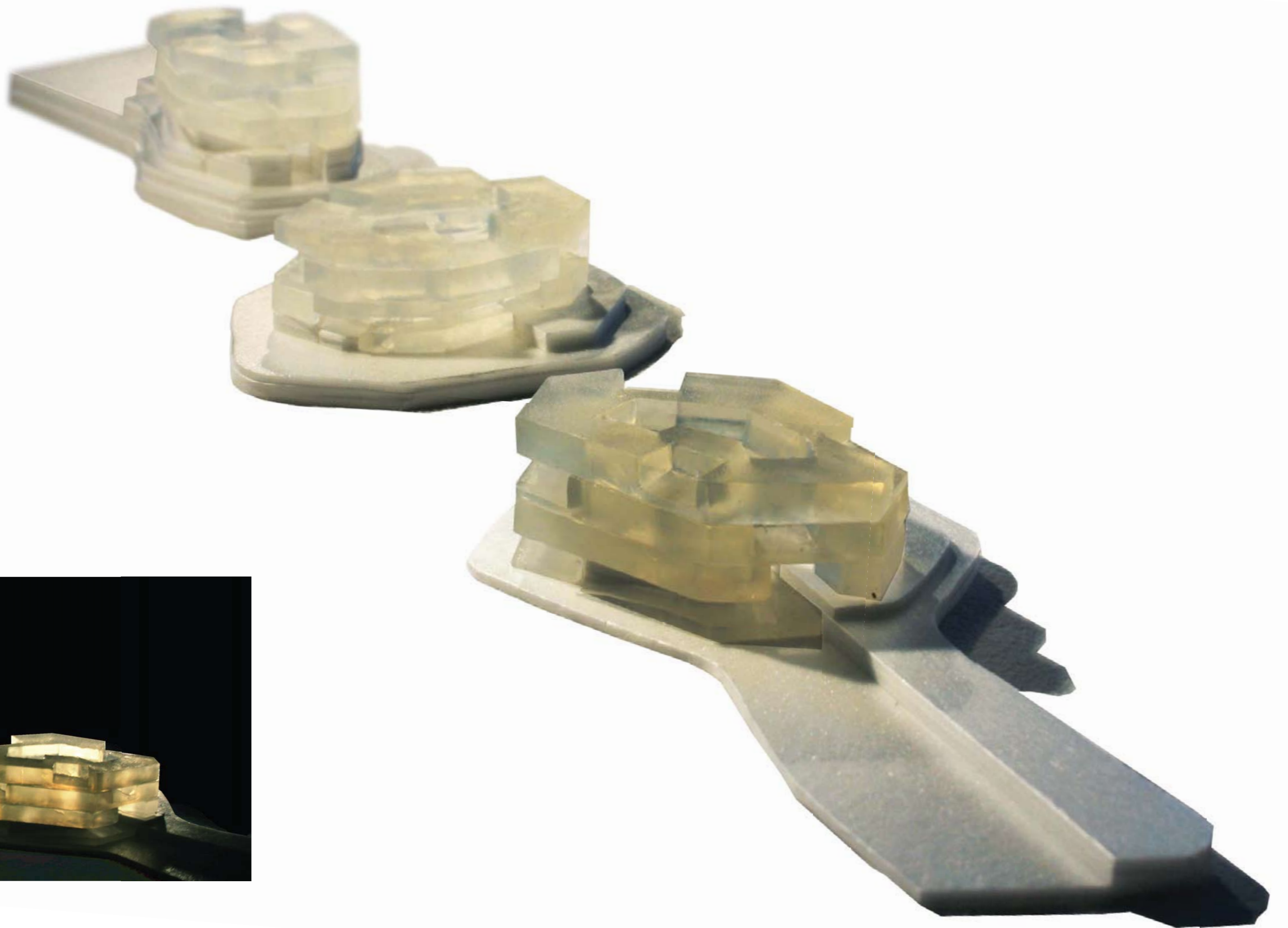
PHASING THE PROCESS



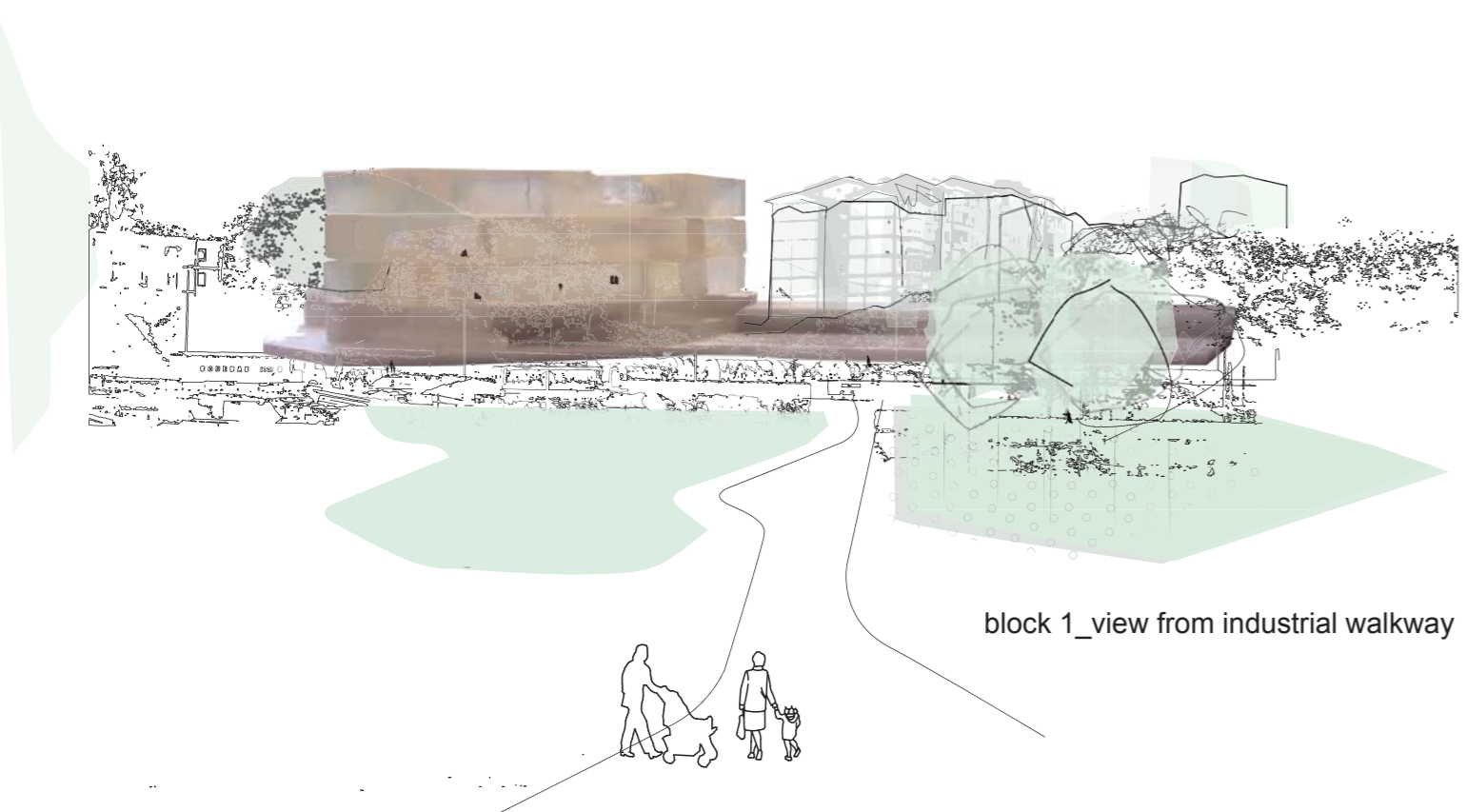
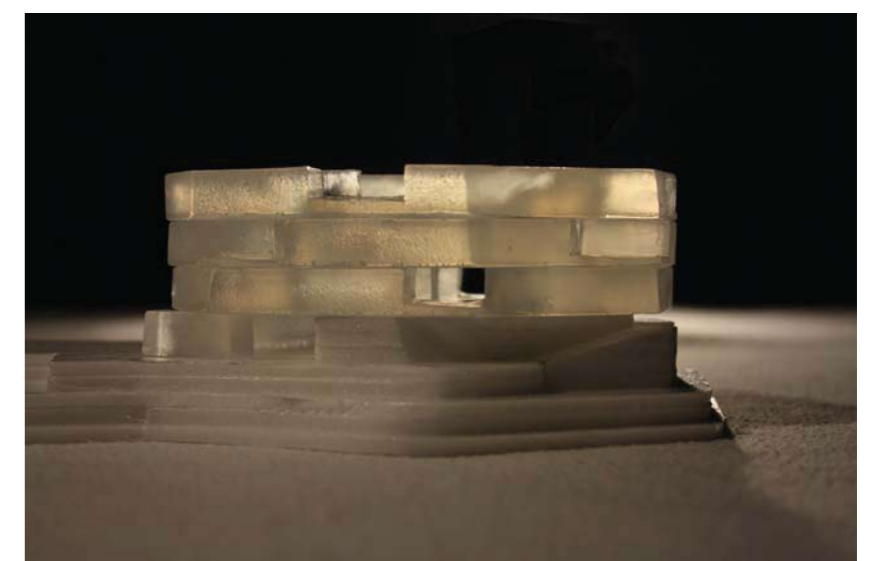
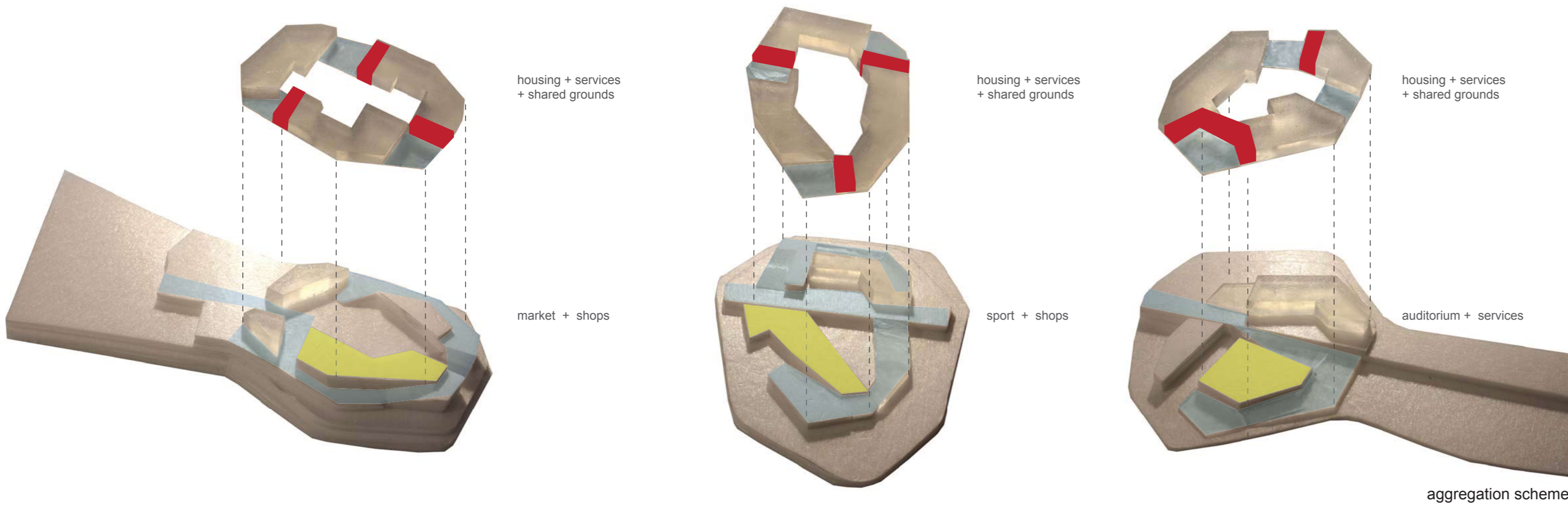
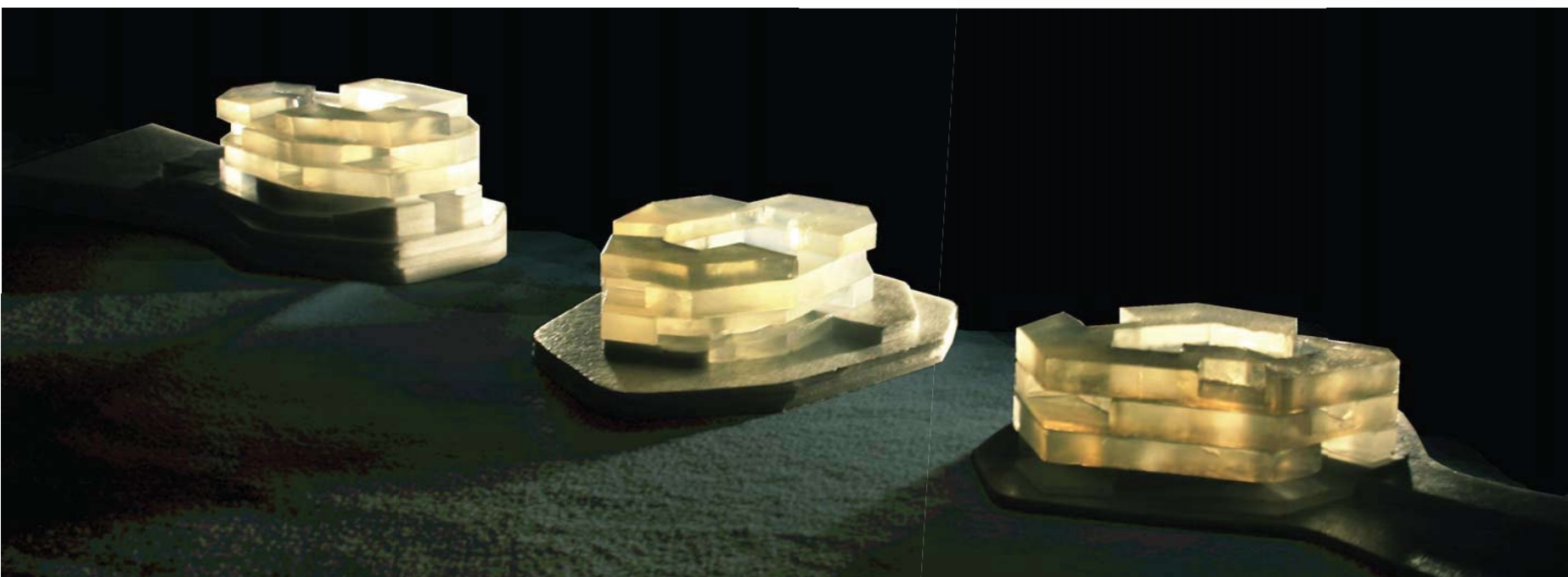
type-floor diagram scale 1:1000



night view



model scale 1:1000



block 1\_view from industrial walkway

