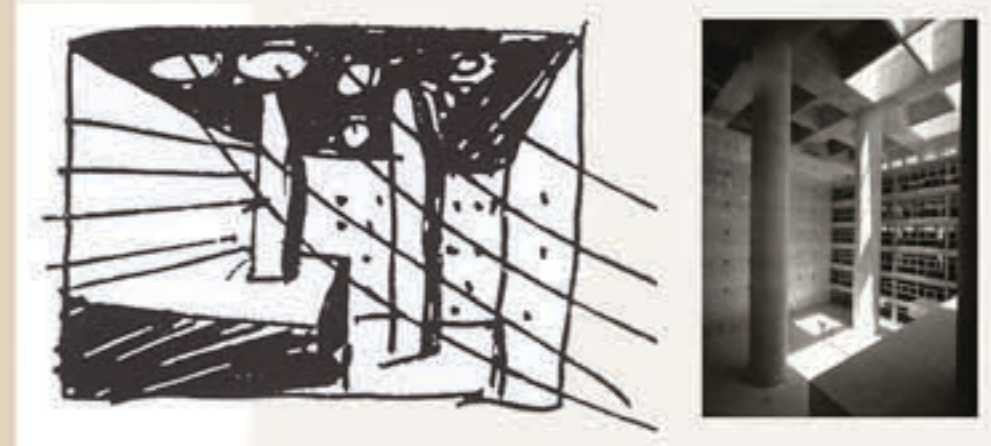


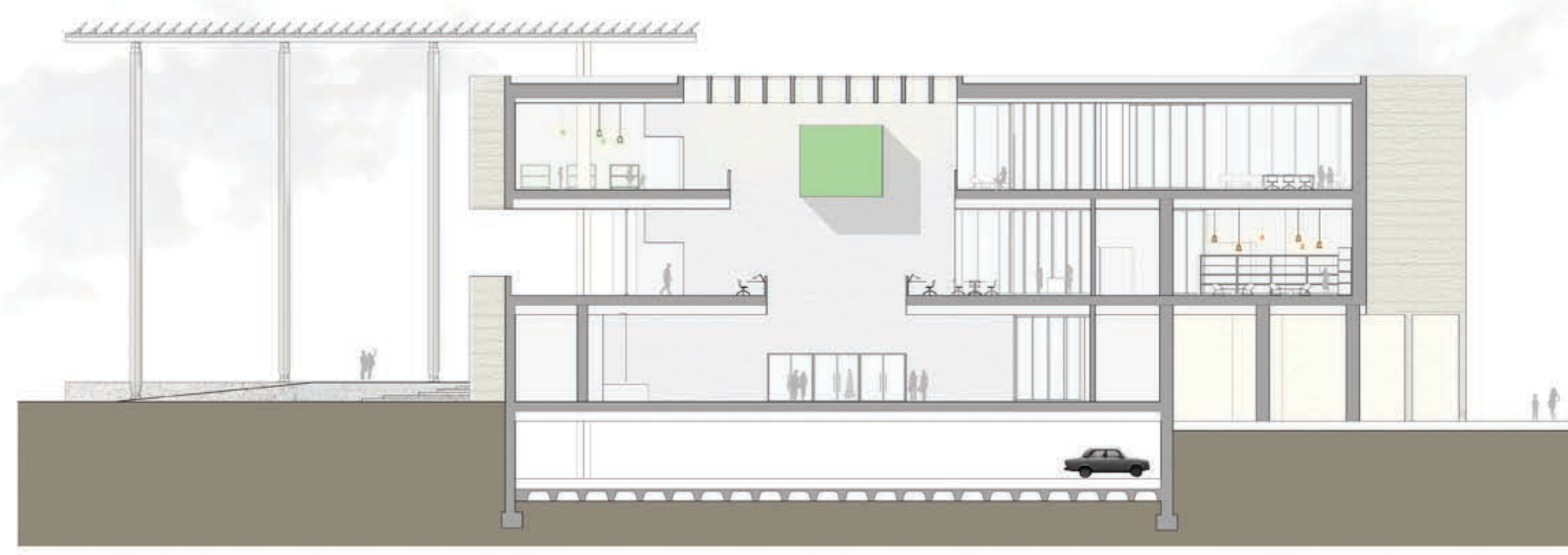
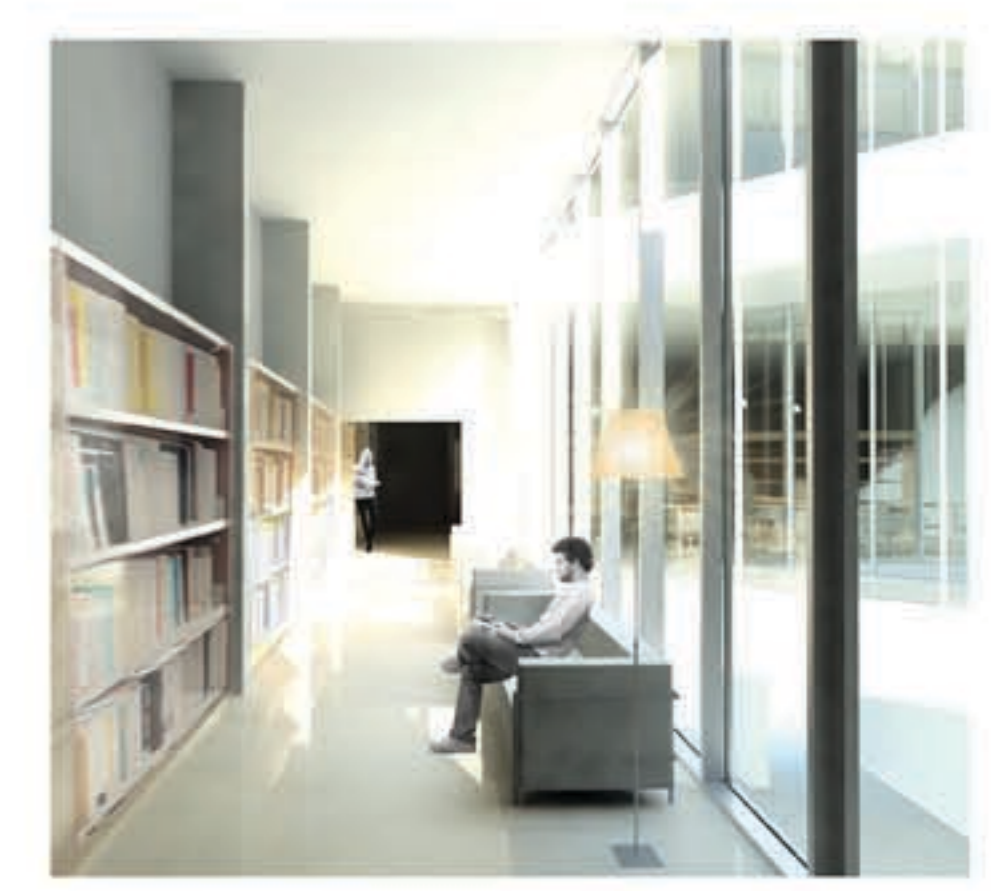
Alberto Campo Baeza Caja, Granada Spagna, 1992



Carré d'art, sir Norman Foster, Nimes Francia, 1993



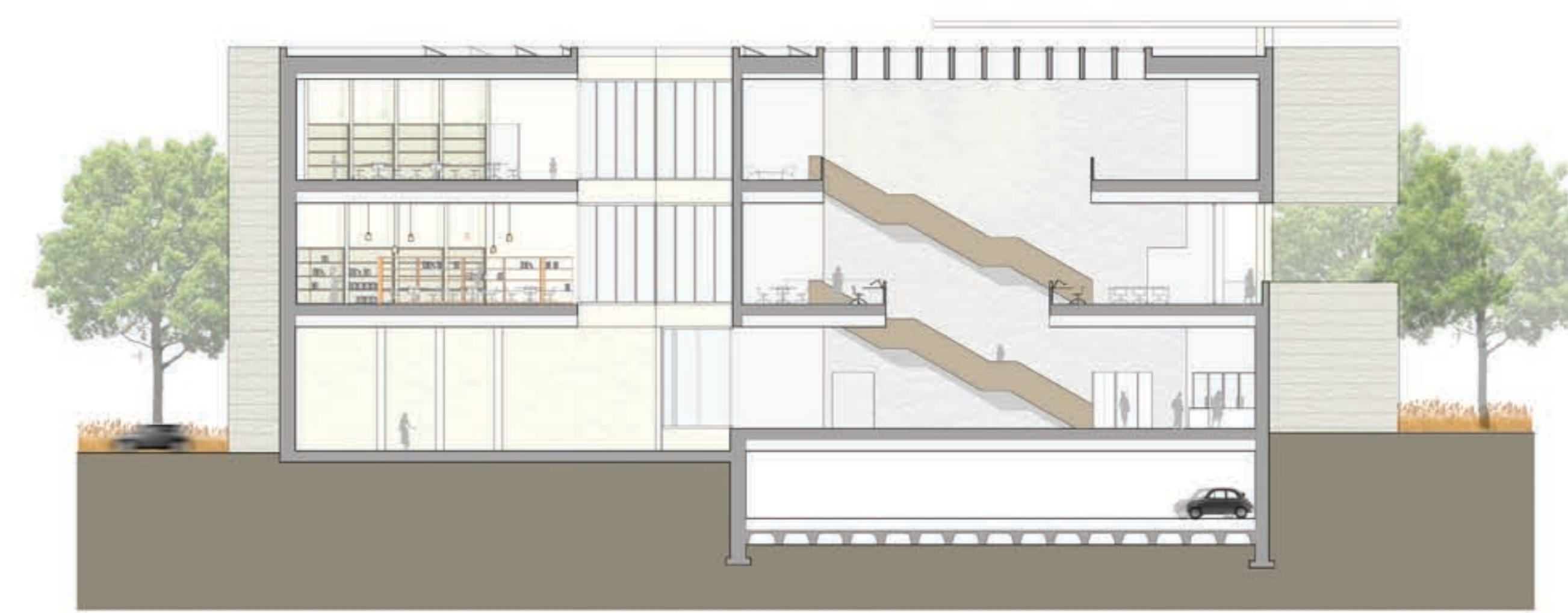
Alvaro Siza, Biblioteca municipale, Viano do Castelo, Portogallo, 2009



Sezione A-A'



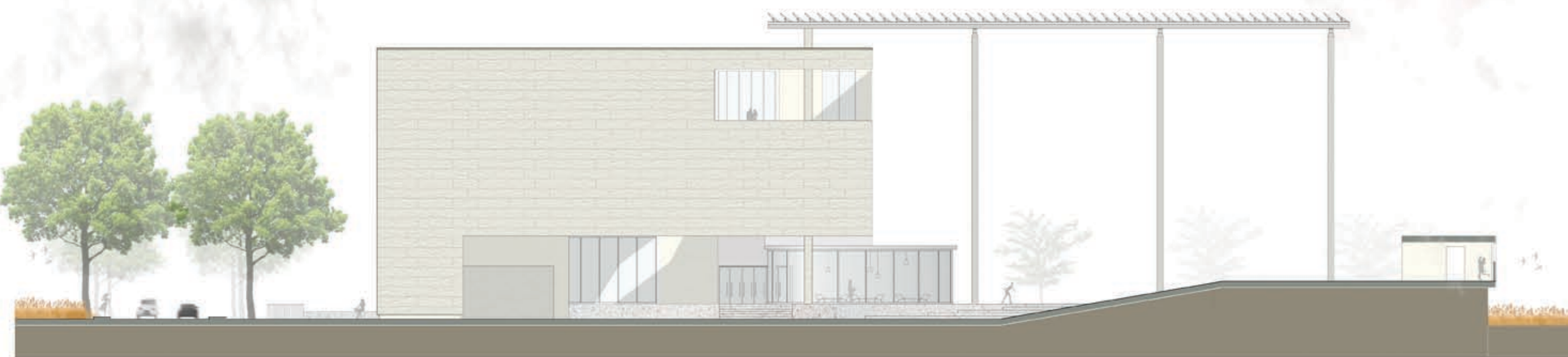
Sezione B-B'



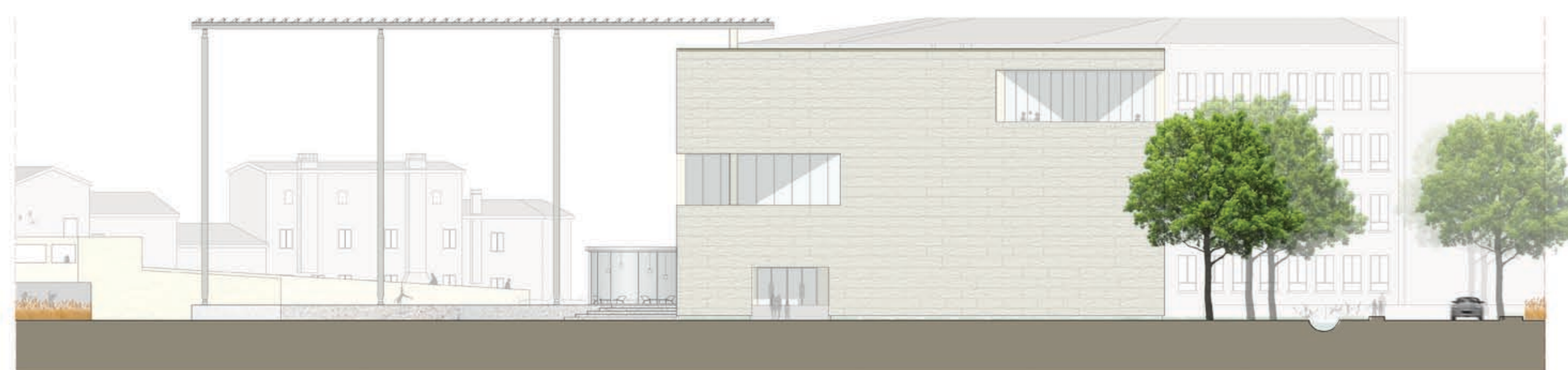
Sezione C-C'



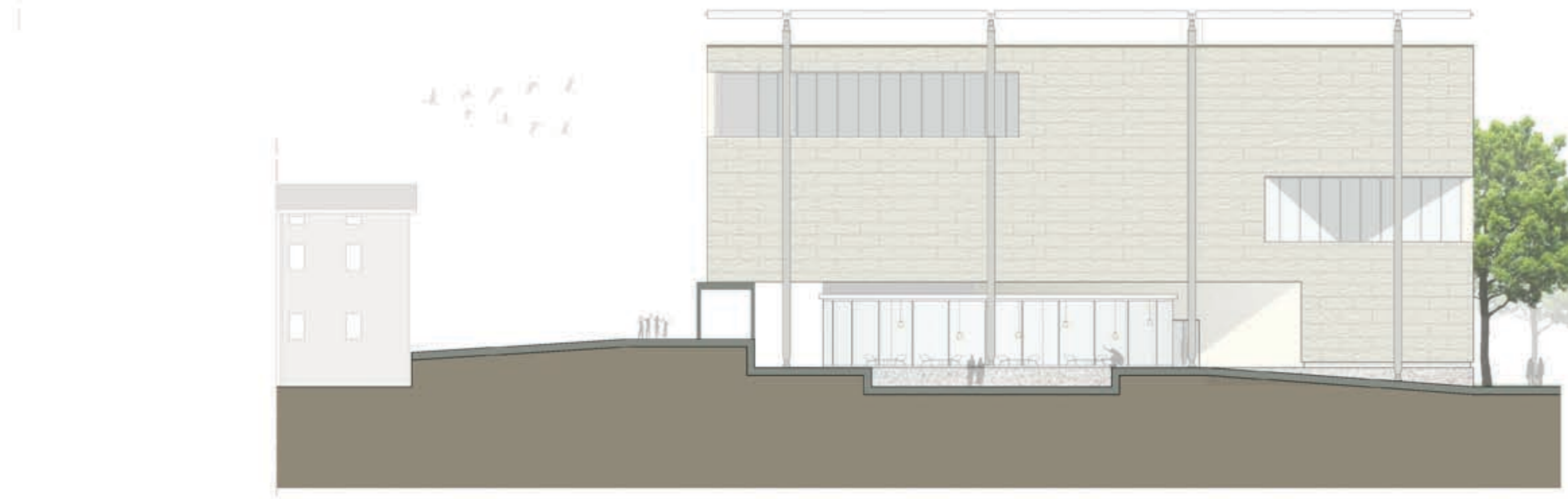
Prospetto Nord - Ovest



Prospetto Nord - Est

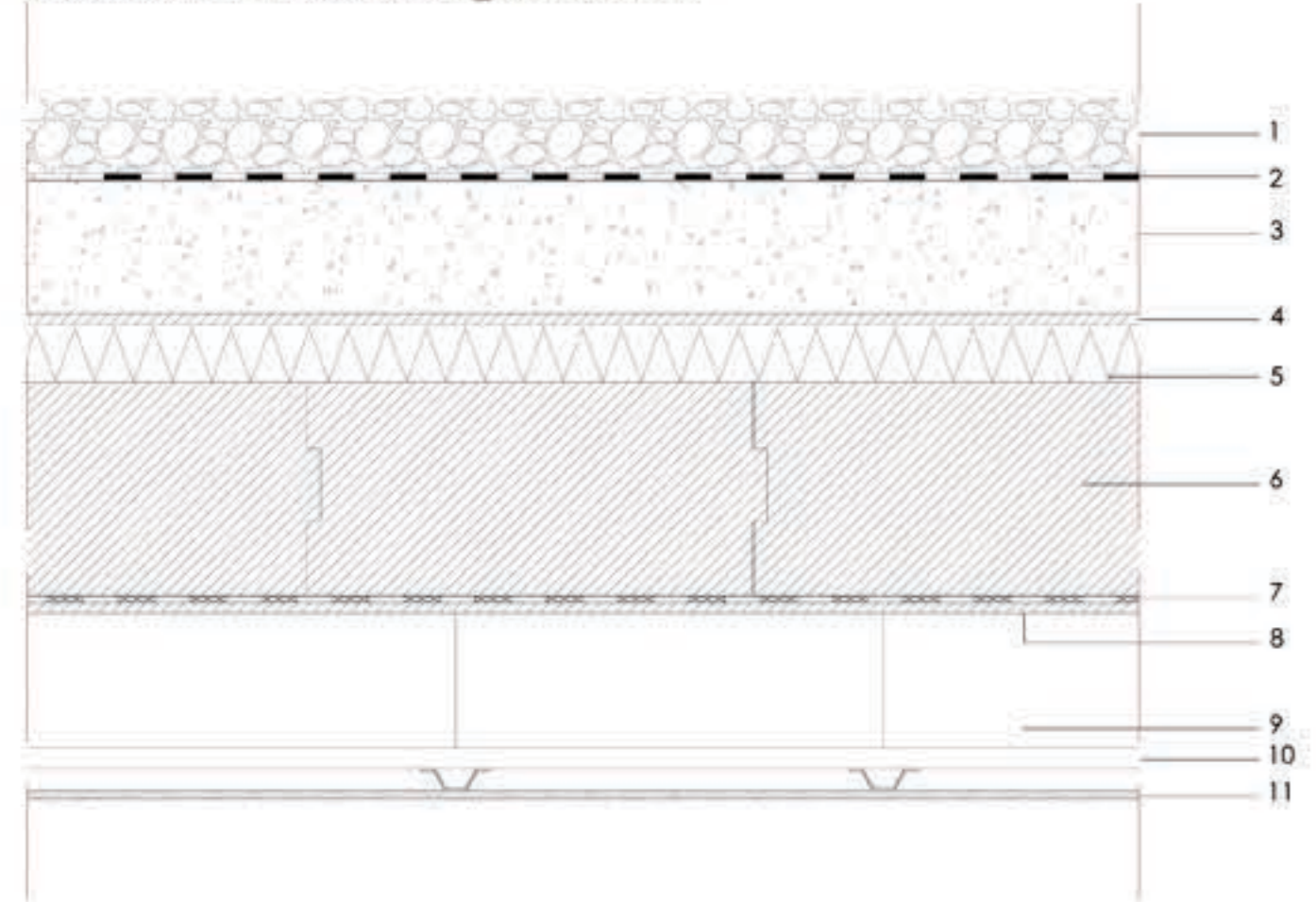


Prospetto Sud - Ovest

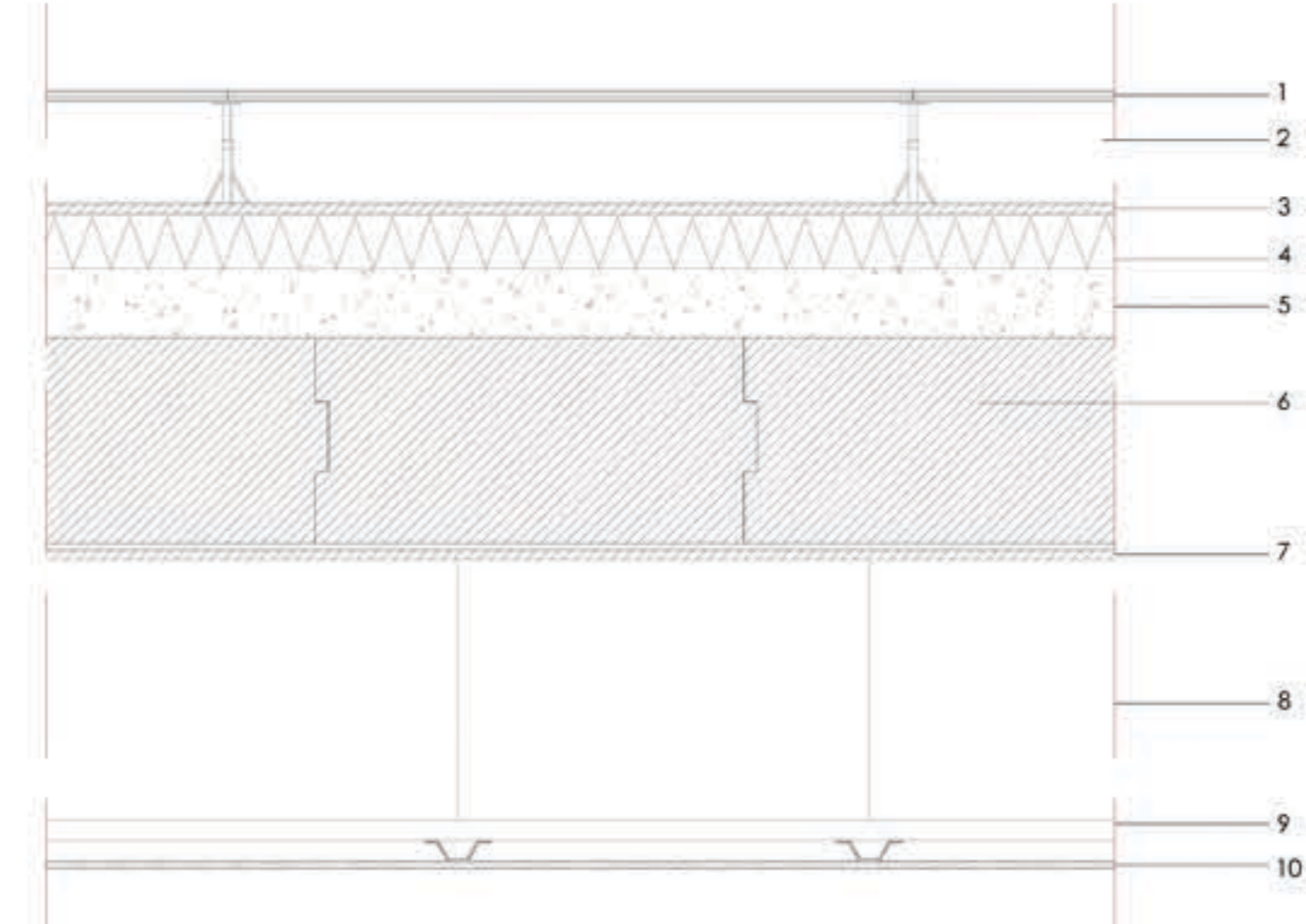


Prospetto Sud - Est

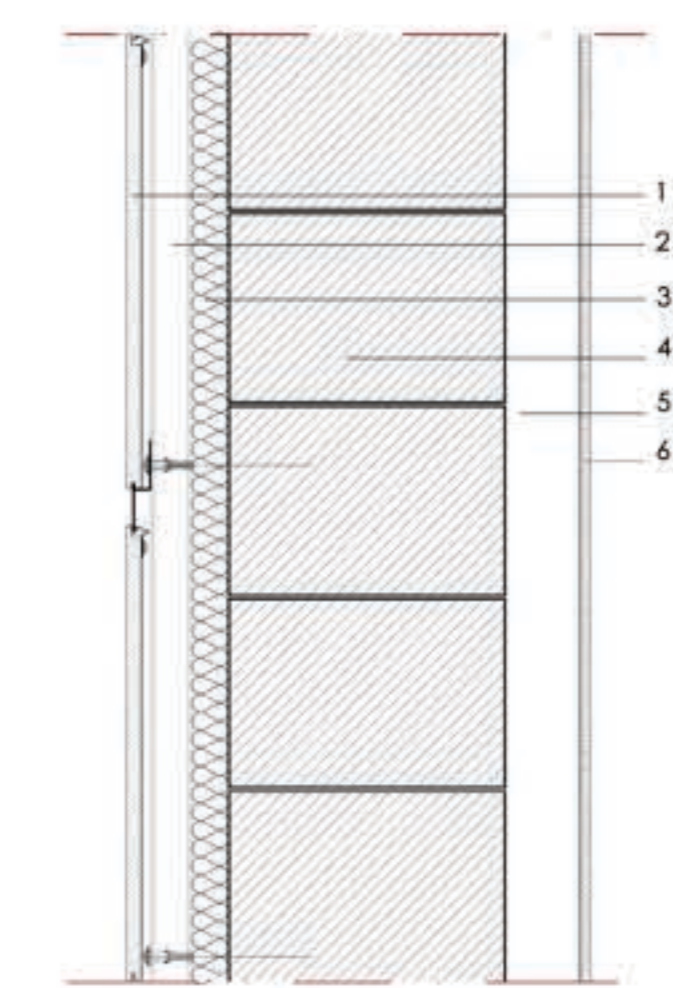
STRATIGRAFIE E MATERIALI \_ SCALA 1:10



- SOLAIO DI COPERTURA SP. 60 cm  
TRASMITTANZA 0.25 W/mqK
- LEGENDA
1. Ghiaia
  2. Guaina bituminosa
  3. Massetto in pendenza in cls
  4. Pannello in OSB - sp. 1.5 cm
  5. Pannello isolante in fibra di legno - sp. 8 cm
  6. Lastre Ytong climaplus - sp. 30 cm
  7. Barriera al vapore
  8. Pannello in OSB - sp. 1.5 cm
  9. vano tecnico impianti - sp. 25 cm
  10. Profilo portante - sp. 3 cm
  11. Fibrogesso - sp. 1,2 cm



- SOLAIO INTERPIANO SP. 60 cm  
TRASMITTANZA 0.25 W/mqK
- LEGENDA
1. Pavimentazione
  2. Vano tecnico impianti - sp. 15 cm
  3. Pannello in OSB - sp. 1.5 cm
  4. Pannello isolante in fibra di legno - sp. 8 cm
  5. Massetto impianti - sp. 10 cm
  6. Lastre Ytong - sp. 30 cm
  7. Pannello in OSB - sp. 1.5 cm
  8. Vano tecnico impianti - sp. 40 cm
  9. Profilo portante - sp. 3 cm
  10. Fibrogesso - sp. 1,2 cm



- PARETE ESTERNA SP. 60 cm  
TRASMITTANZA 0.12 W/mqK
- LEGENDA
1. Rivestimento esterno in ceppo di grè
  2. Intercapedine d'aria ventilata - sp. 5 cm
  3. Isolamento in fibra di legno - sp. 5 cm
  4. Blocchi Ytong climaplus - sp. 36.5 cm
  5. Vano tecnico - sp. 10 cm
  6. Fibrogesso - sp. 1,2

