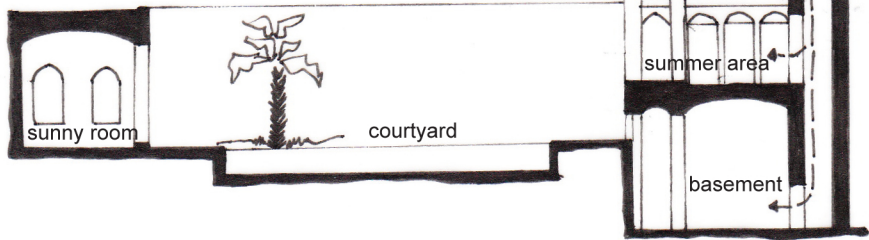


GARDEN AND IVAN:

The summer areas of the house including Ivan and Talar look to the northeast to avoid the heat of the afternoon sun.

Ivan is the semi open area in the summer part of the house that is located over the cellar. The floor of Ivan is usually located a few steps higher than the garden. This difference between the garden and Ivan is used for the ventilator of the cellar that is usually located under the summer part. In this way the cool air inside the garden will flow down to the cellar and later will be sucked up by air ducts.



air flow in a large housing type

