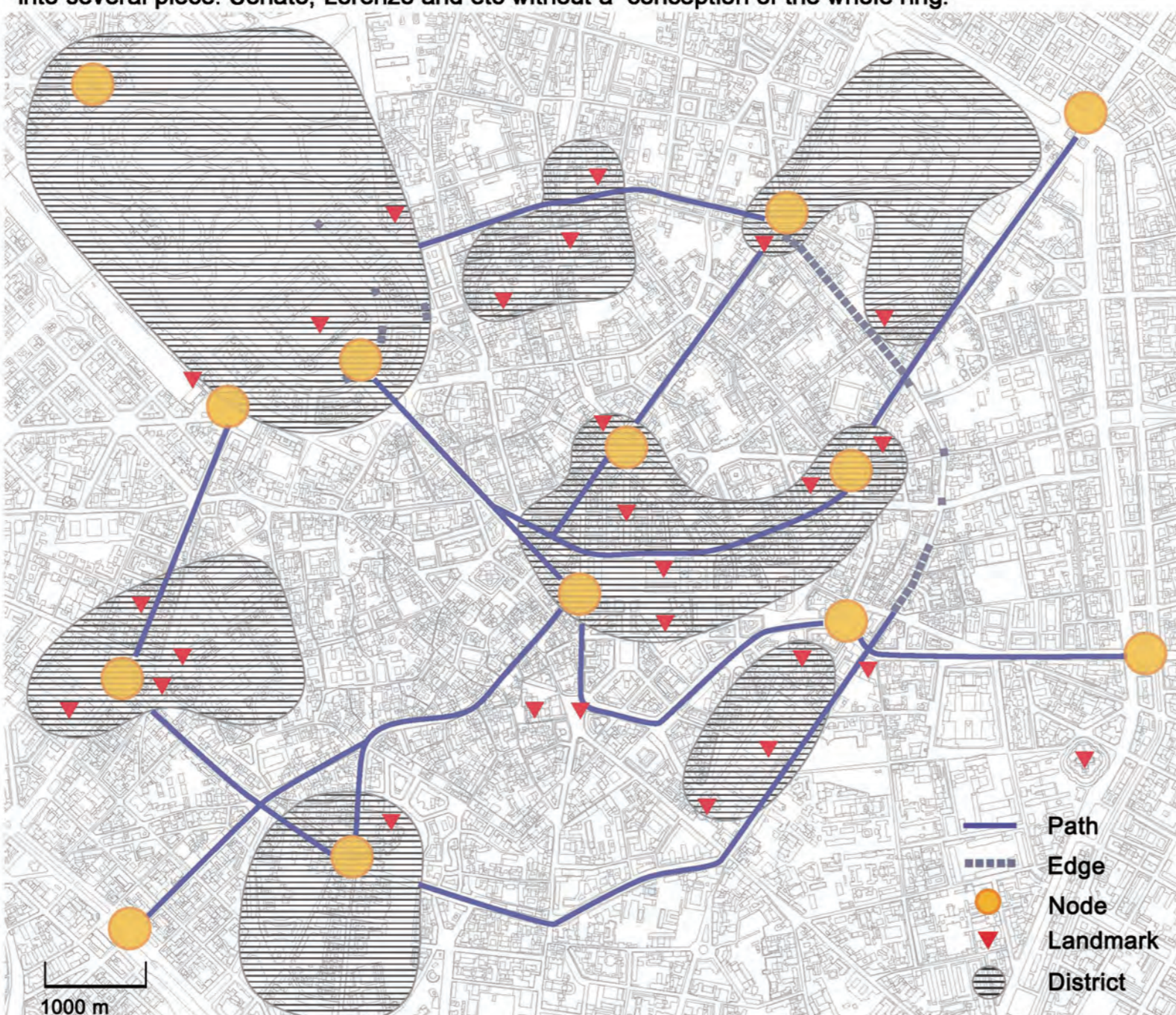


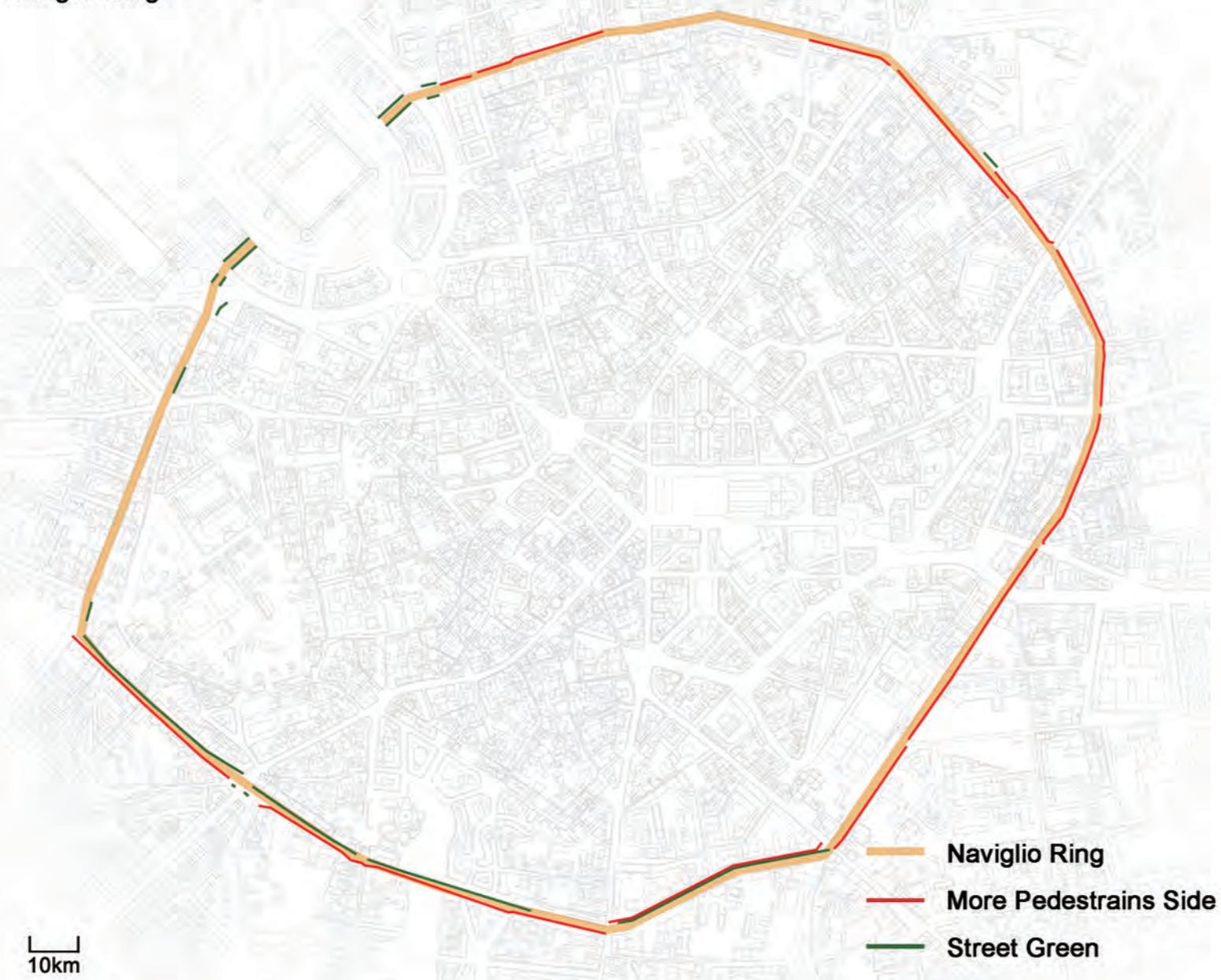
CITY FORM GROUP

Based on **interview**, we found although most of people know Naviglio Ring, they still device the city into several piece: Senato, Lorenzo and etc without a conception of the whole ring.



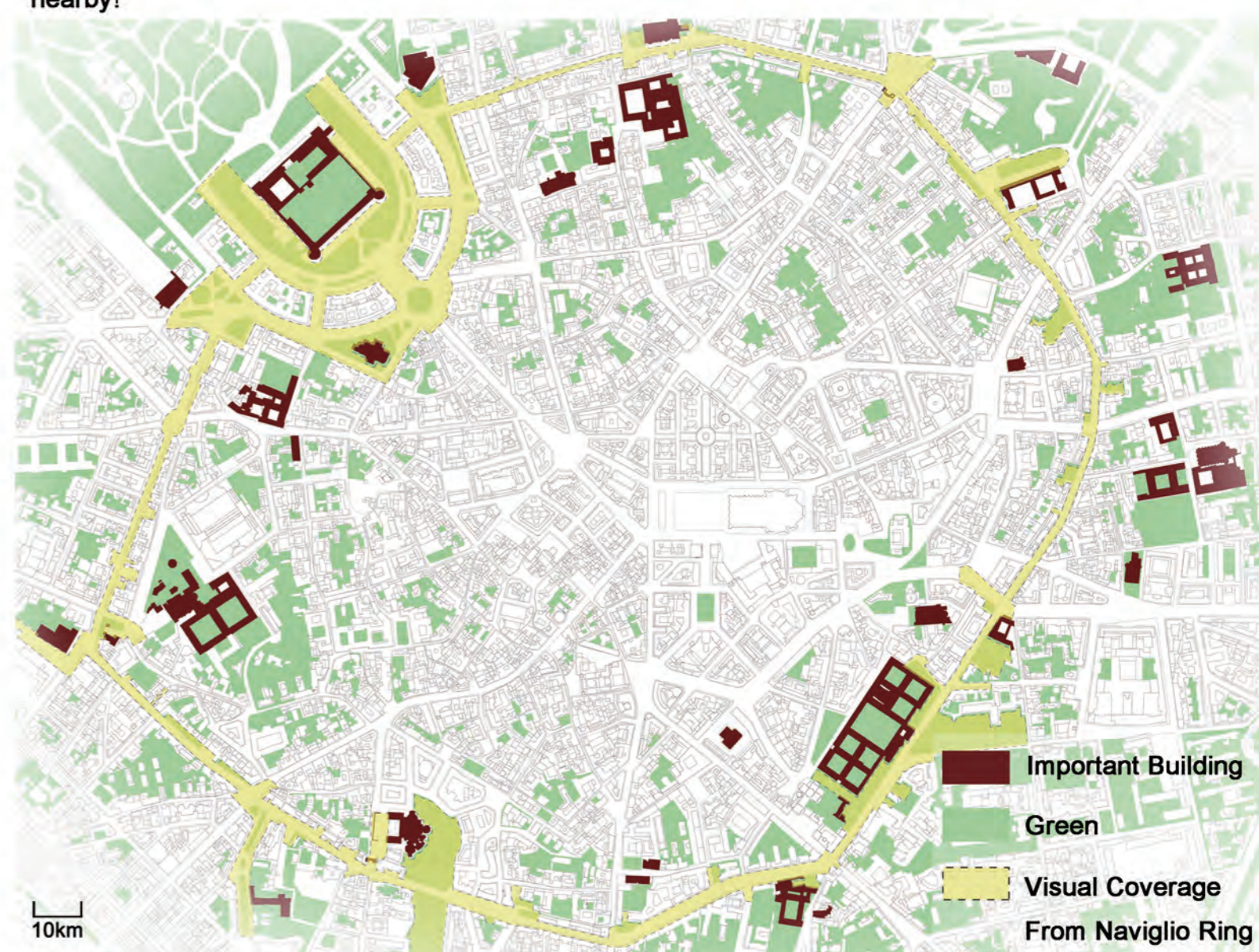
MORE PEDESTRAINS SIDE & STREET GREEN

Based on **Pedestrian Flow** map, we found that on most of streets, people walk much more frequently on one side than the other. When we compared it to **Street Green** map, they are nearly opposite to each other. Maybe it can explain a part of reason why **interviewees** think green is not enough on Naviglio Ring.



VISUAL FORM OF MILAN

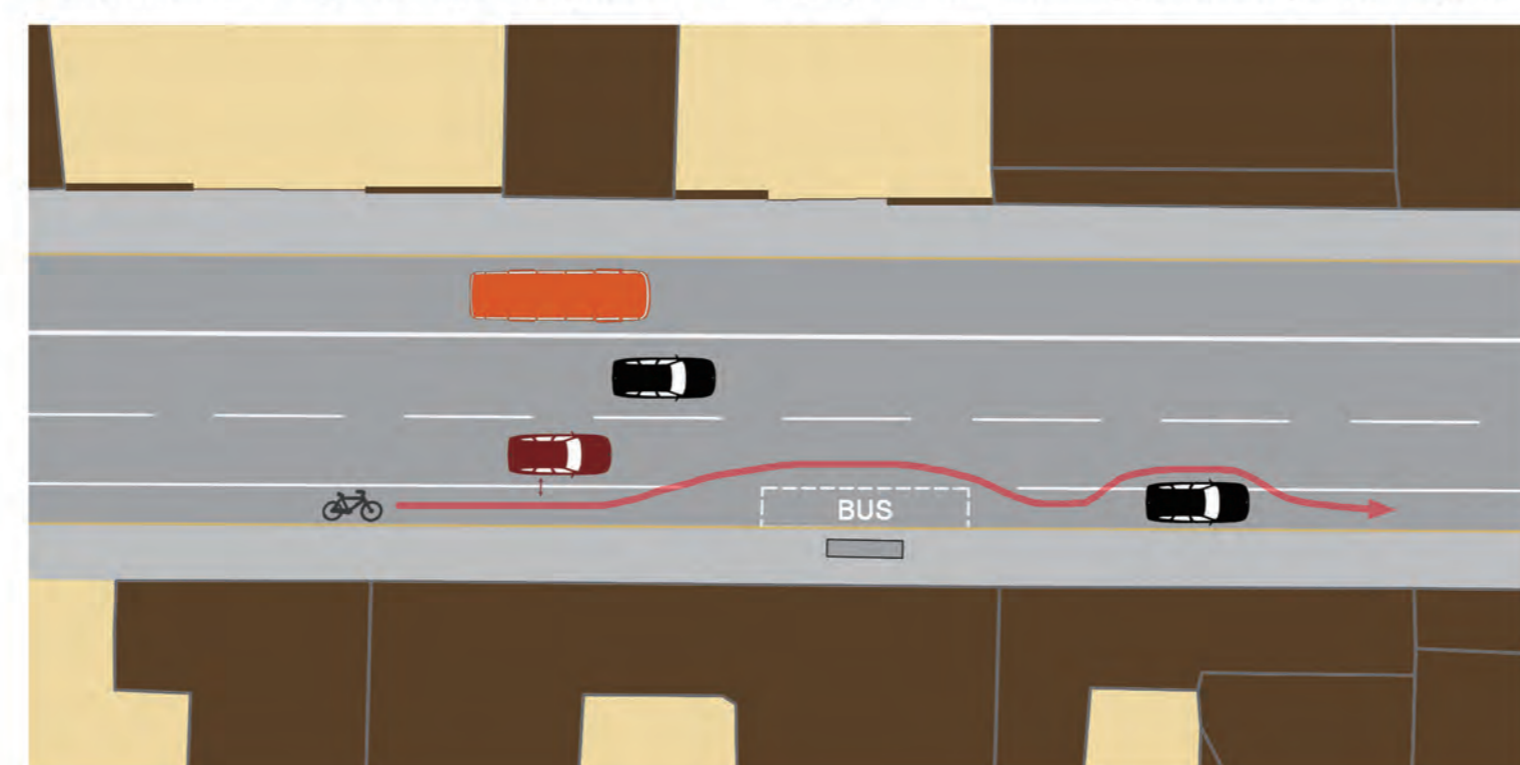
Based on **Green Distribution** map, we analyze the visual range from the street. Several parts of streets, Via Senato, Via Sforza, parts of Via delle Amri in San Lorenzo and streets nearby castello have enough green view which are also the streets **interviewees** prefer. Others are not enough which is another reason of the no green complaint. However, there are so many green areas we can't see nearby!



Based on **BicycleWay** map, we know that in fact there are bicycle way on half Naviglio ring which go through the popular areas, San Lorenzo, Universita di milano & etc. Why people complaint about the bicycle way?

The reason we thought is:

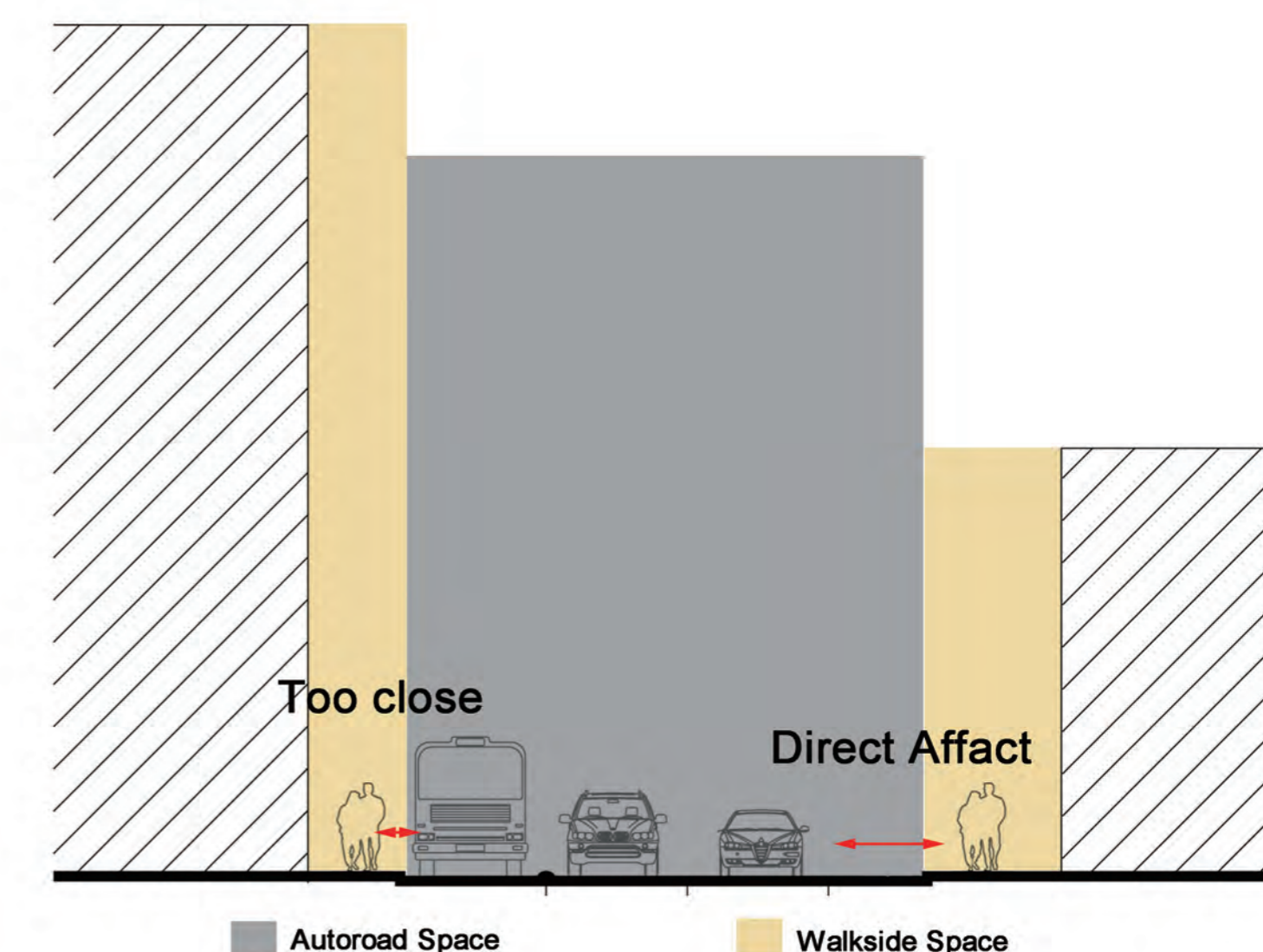
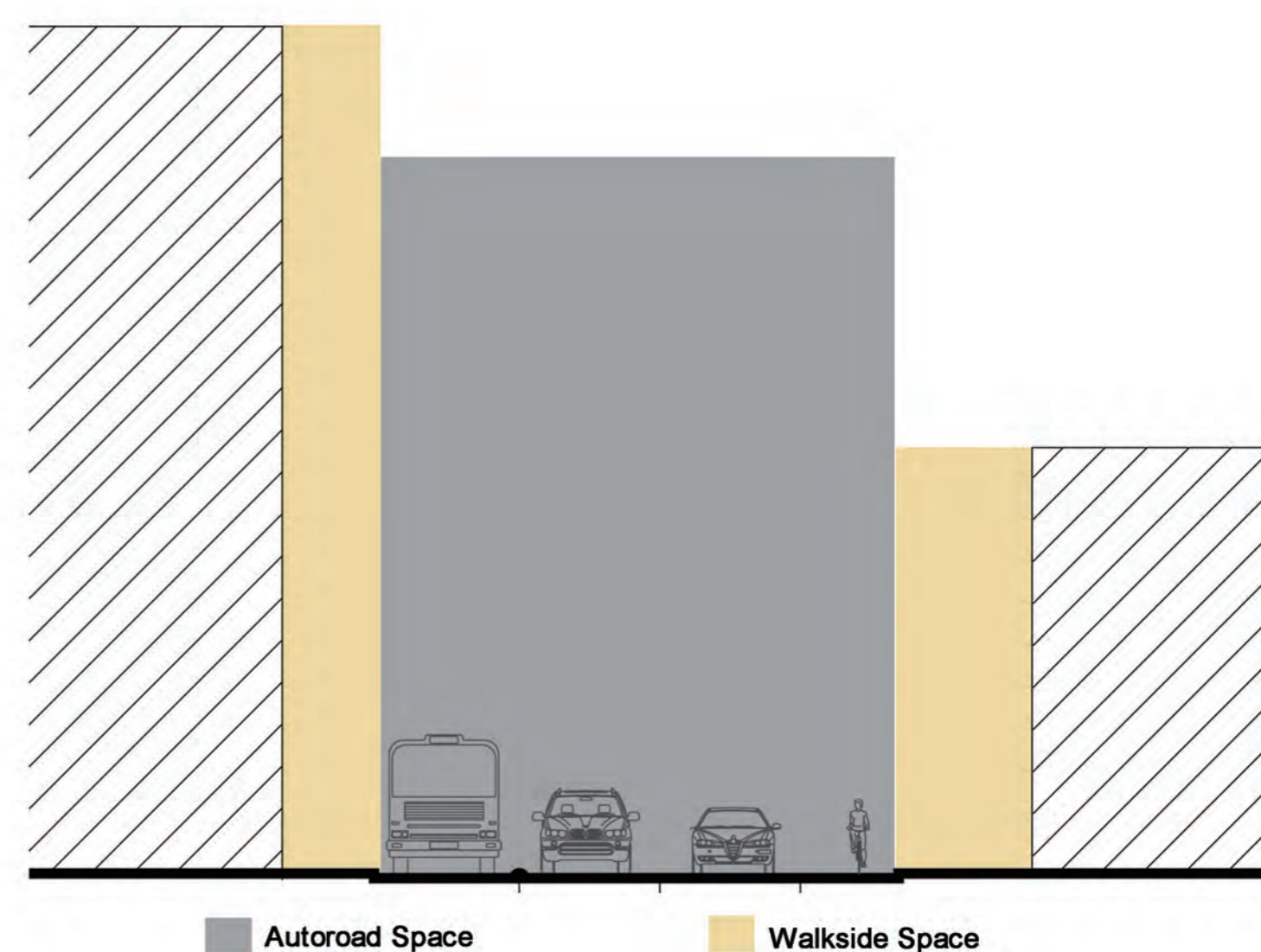
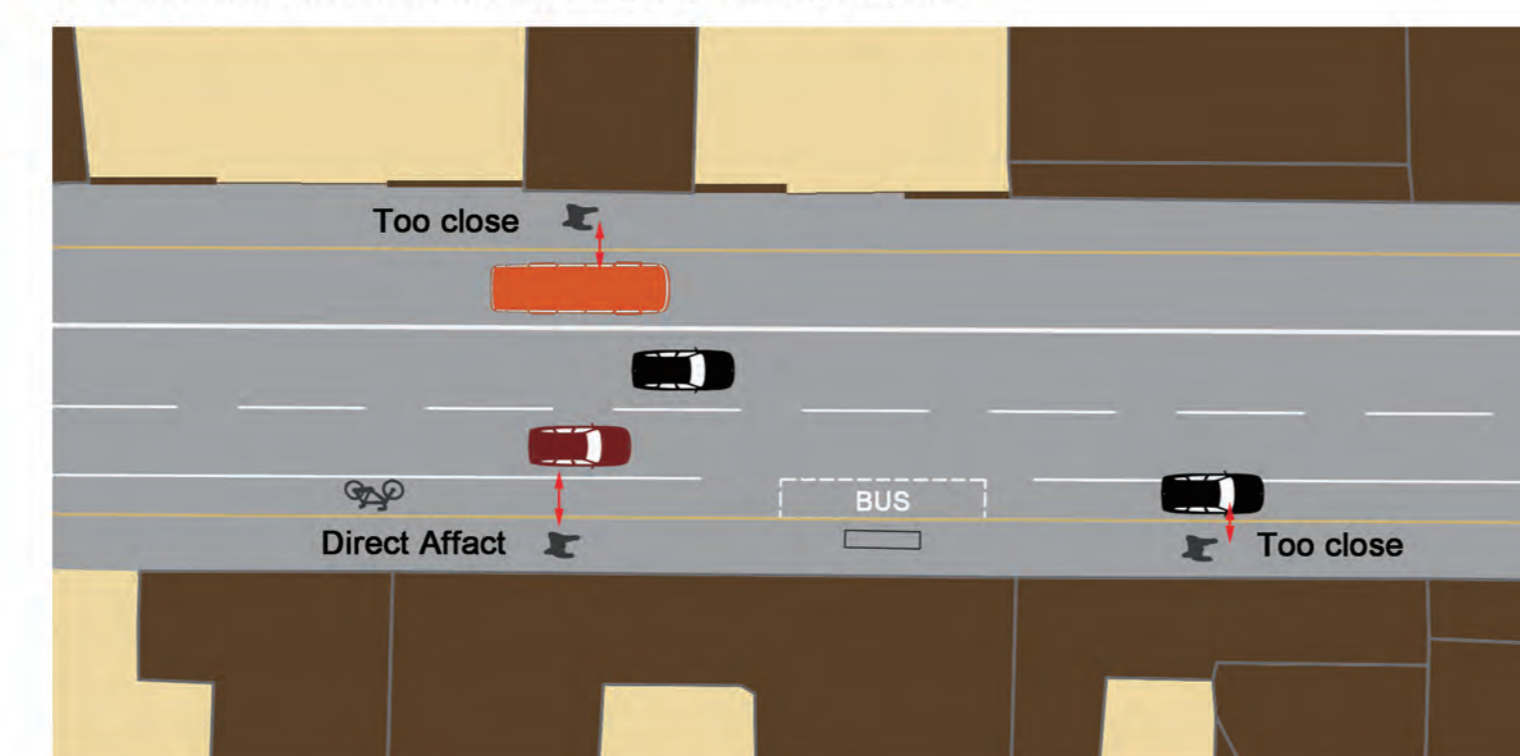
1. Some car will occupied the bike way and some time the there is a bus staiton taside. Bike should detour.
2. Becasue of high level and color material of ground, the bicycle way was felt like a part of auto space.
3. All kind of breakage of bicycle way and not strong signal makes it disappear from people's eyes.



In **Interview**, people don't like so many vehicles which is truth. However, from **Traffic Line** map, we know it is difficult to reduce the number of vehicles. Is there any thing we can do?

In fact, the traffic is busy only in peak time. We thought there is a psychology problem more or less.

1. The vechile is close to people in distance.
2. The noisy, air and vechiles view very directly affect on people.
3. There are nothing else give people a deep impression.
4. Smillar color and materila make "together"feeling in space.



WHY ARE PEOPLE NOT FAMILAR WITH NAVIGLIO RING?

WHY GREEN IS COMPLAINED ABOUT SCARCITY?

IS BICYCLE WAY REALLY NOT ENOUGH??

Do you find the Bicycle Way?



TOO MANY VEHICLE?



Sometime, even there are not so many vechiles, the only things first appear in you mind are still the large gray areas of concrete road and the moveable vechiles.