

AULA CIVICA E SALA MOSTRE

SALE MINORI

FOYER e BIGLIETTERIA

BOOKSTORE E CAFFETERIA

INGRESSO ALLE SALE MINORI E SECONDARIO AL TEATRO

GALLERIA COMMERCIALE

SPAZI COMMERCIALI

AUDITORIUM

SERVIZI E RISALITE

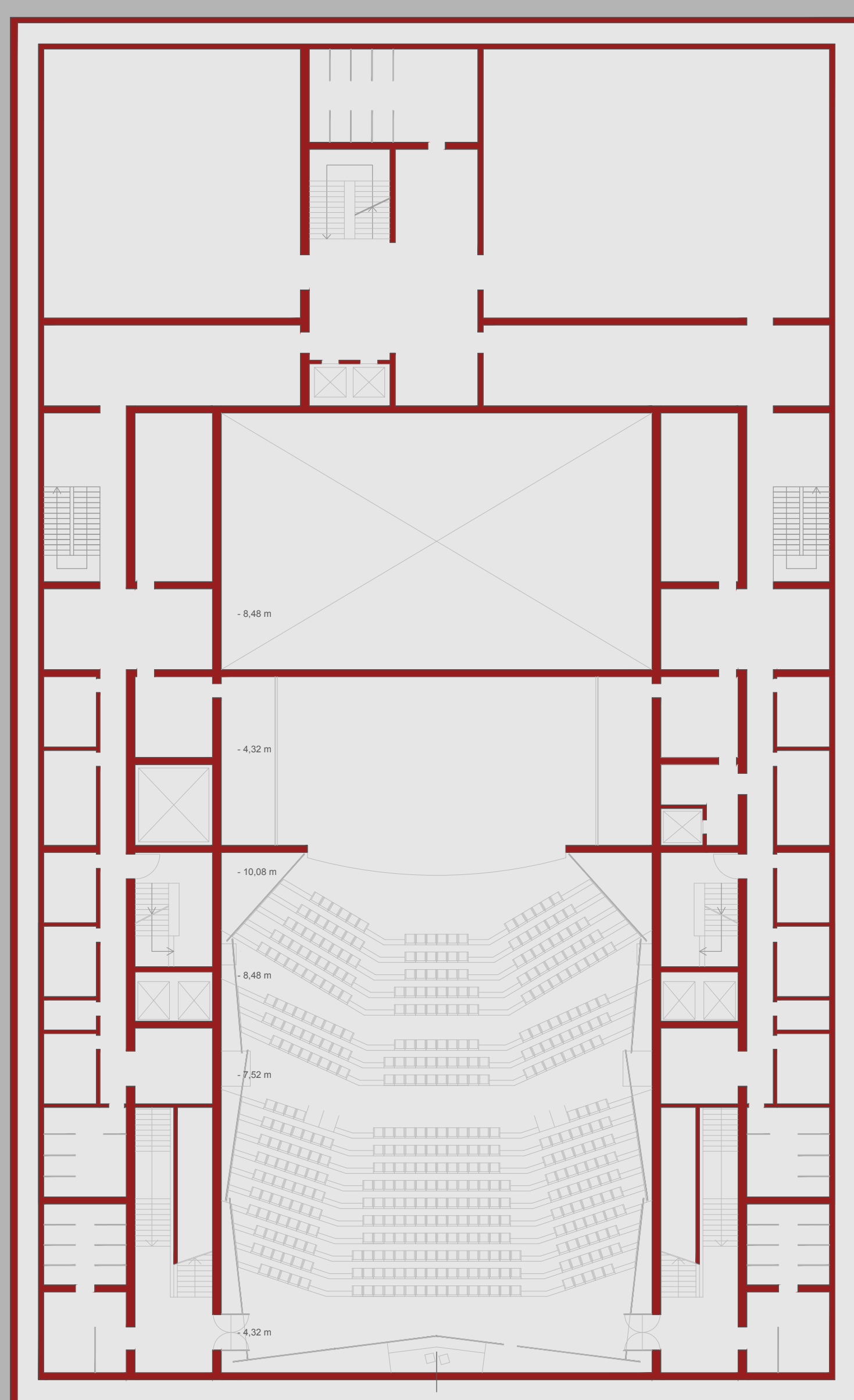
CAMERINI e LOCALI TECNICI

CAMERINI e UFFICI

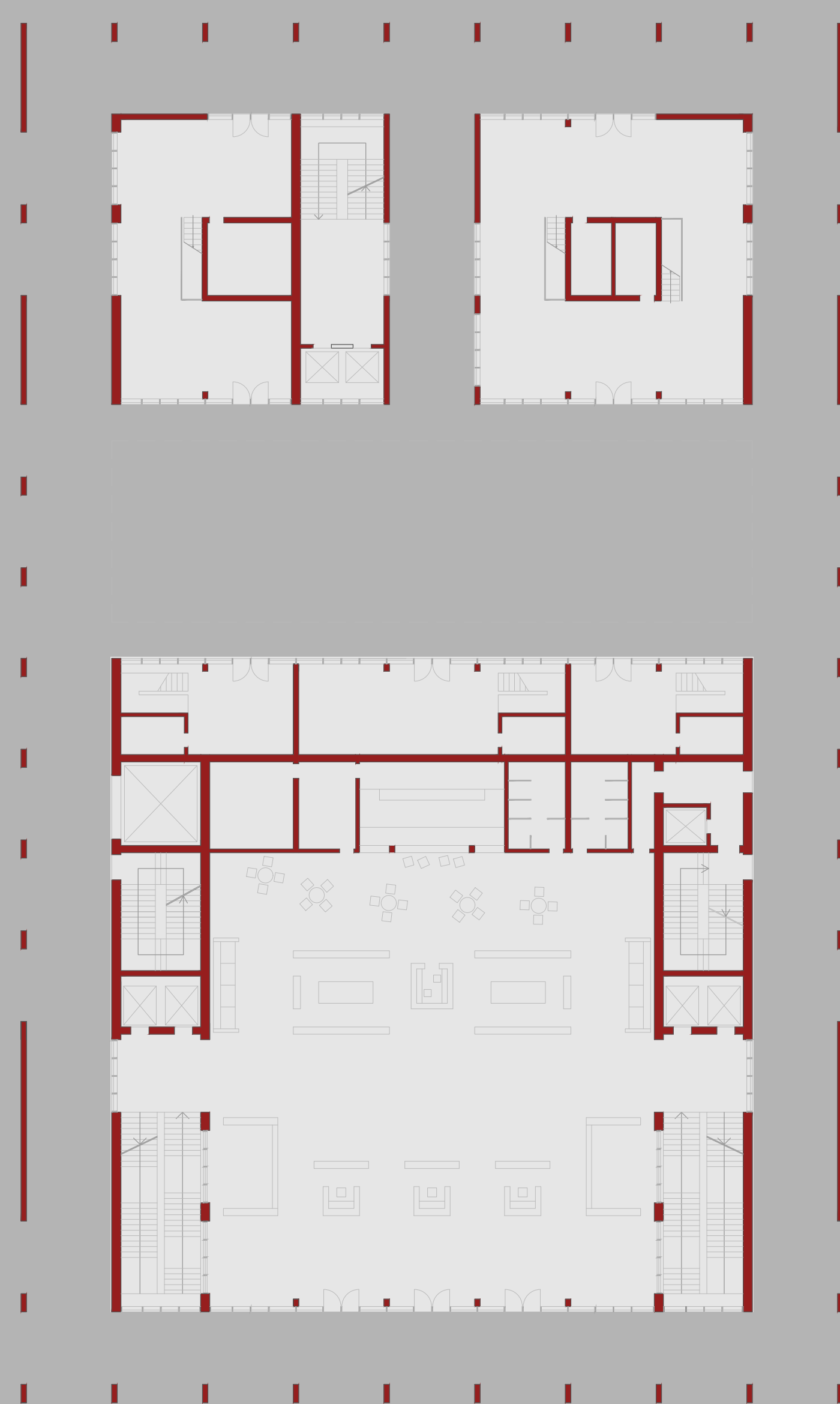
SALA PROVE

QUINTE e SCENOGRAFIE

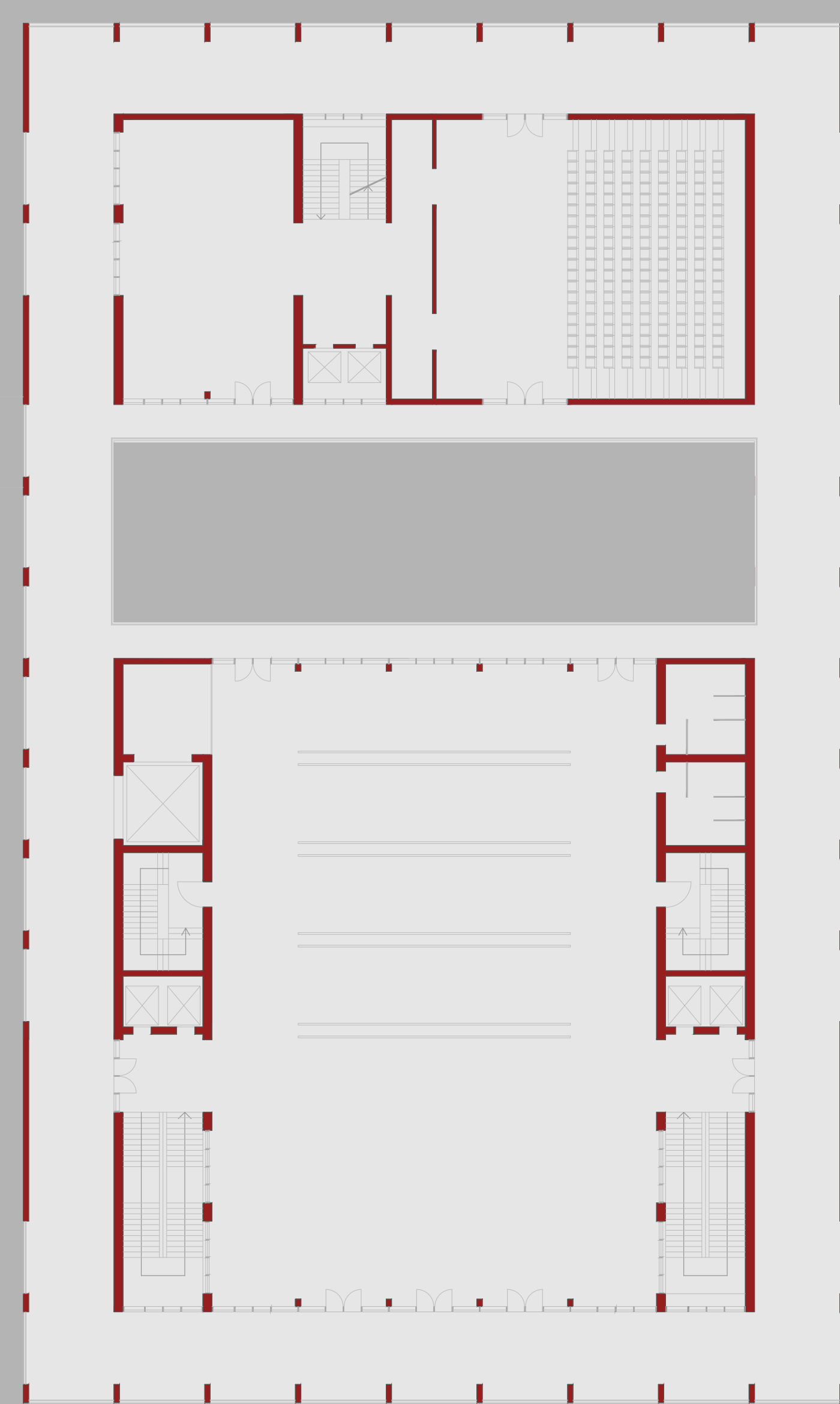
SALA PROVE



PIANTA ALLA QUOTA GALLERIA (-4.32m)



PIANTA PIANO TERRA



PIANTA AULA CIVICA E SALE MINORI (+7.00)