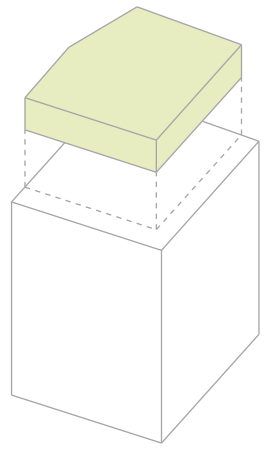


area utilizzabile:
numero alloggi possibili:
numero di possibili inquilini:



135 mq
1
6



| via san calocero, 6 |

11

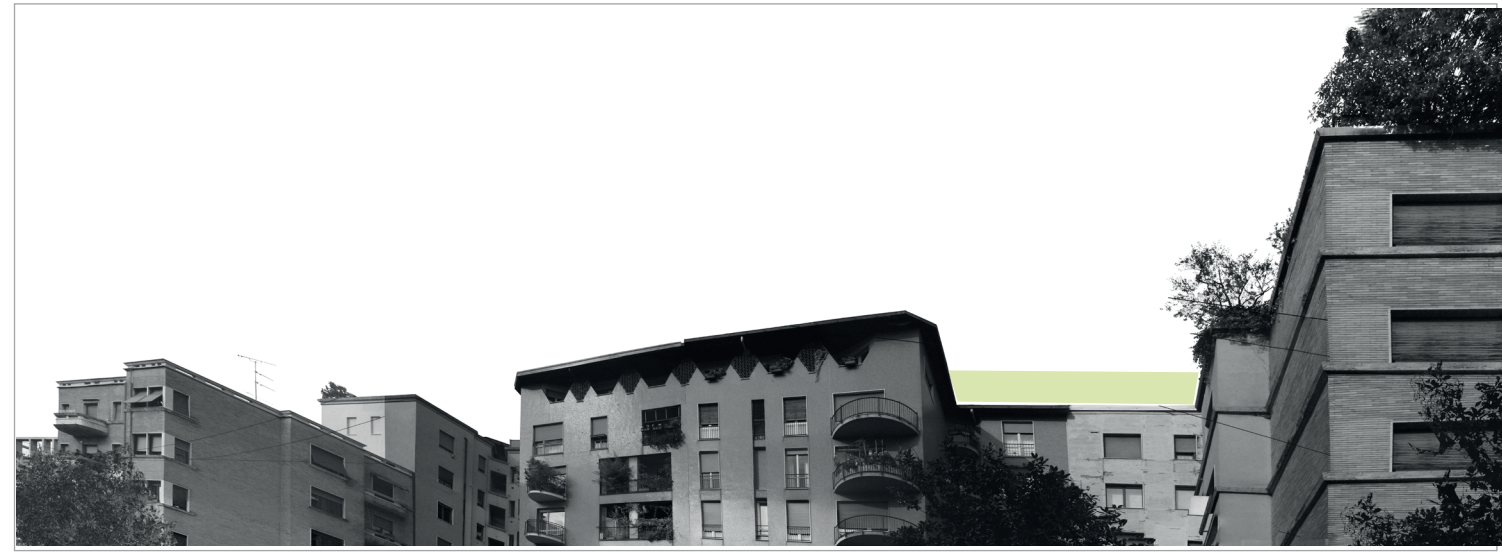
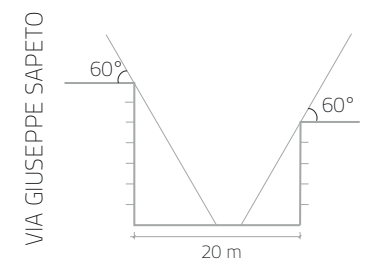
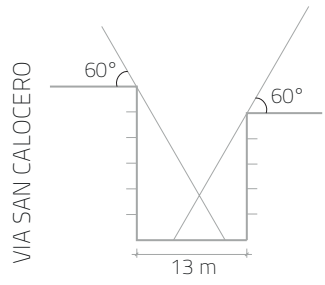
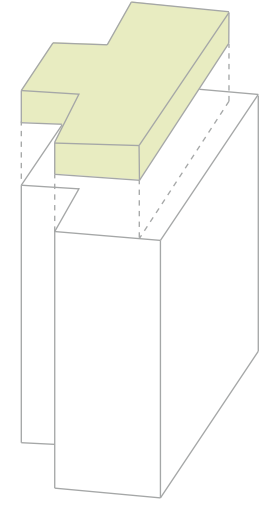
9

| via giuseppe sapeto, 4 |

area utilizzabile:
numero alloggi possibili:
numero di possibili inquilini:



230 mq
2
10



maglia di filo zincato

lamiera fori quadrati



11

9