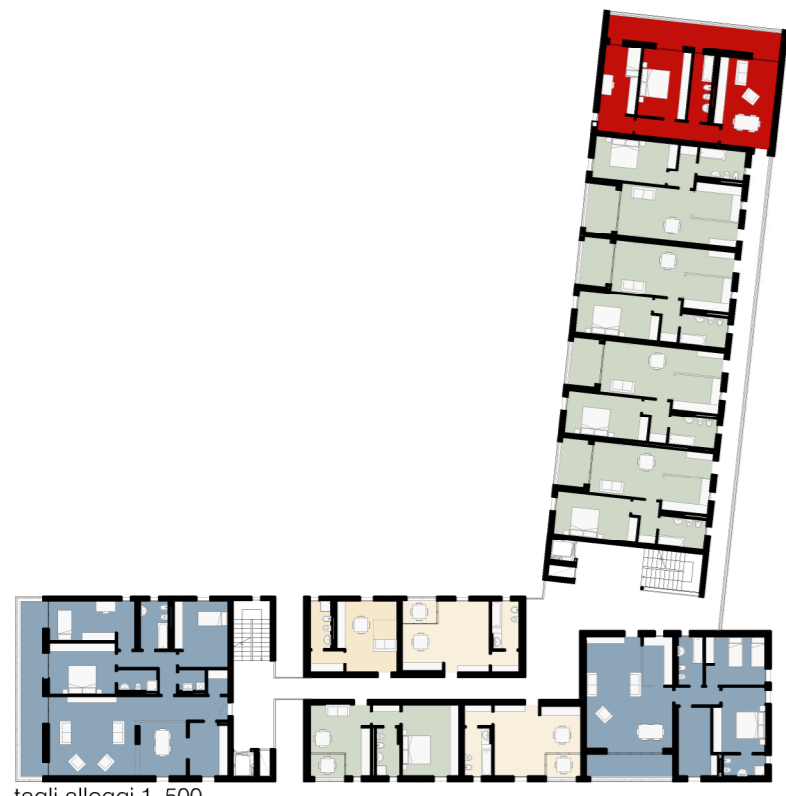
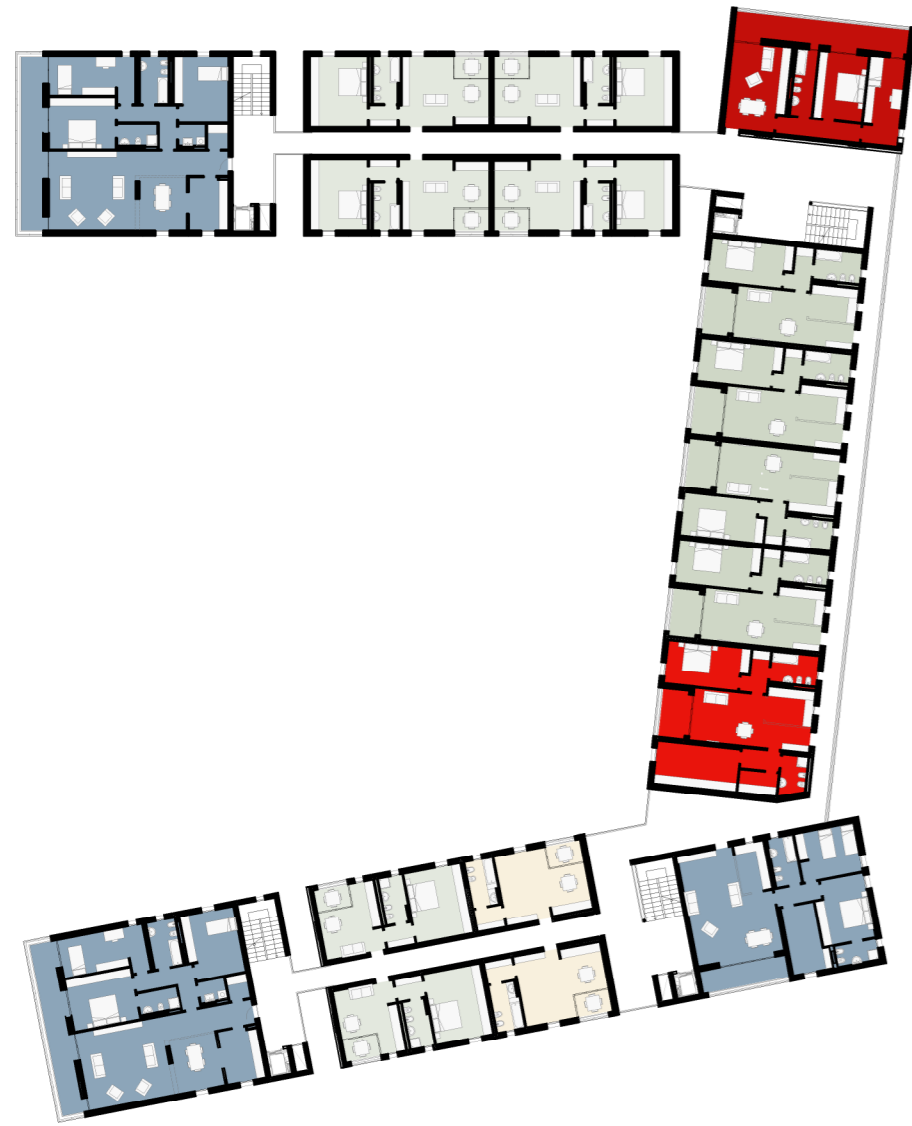
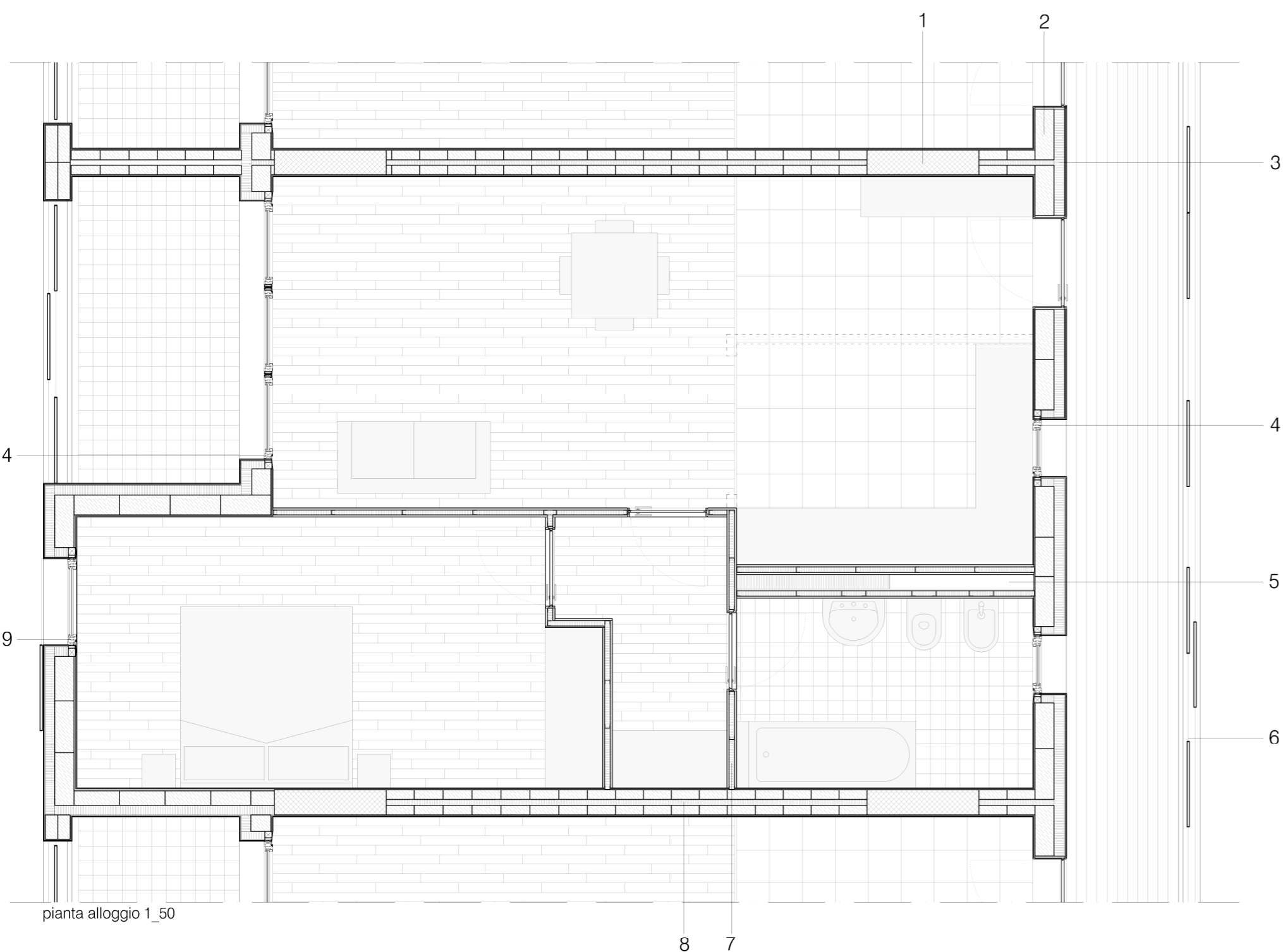


- Quadrilocale\_130 mq\_100 mq
- Trilocale\_1\_80 mq
- Trilocale\_2\_66 mq
- Bilocale\_55 mq
- Monolocale\_1\_33 mq
- Monolocale\_2\_29 mq

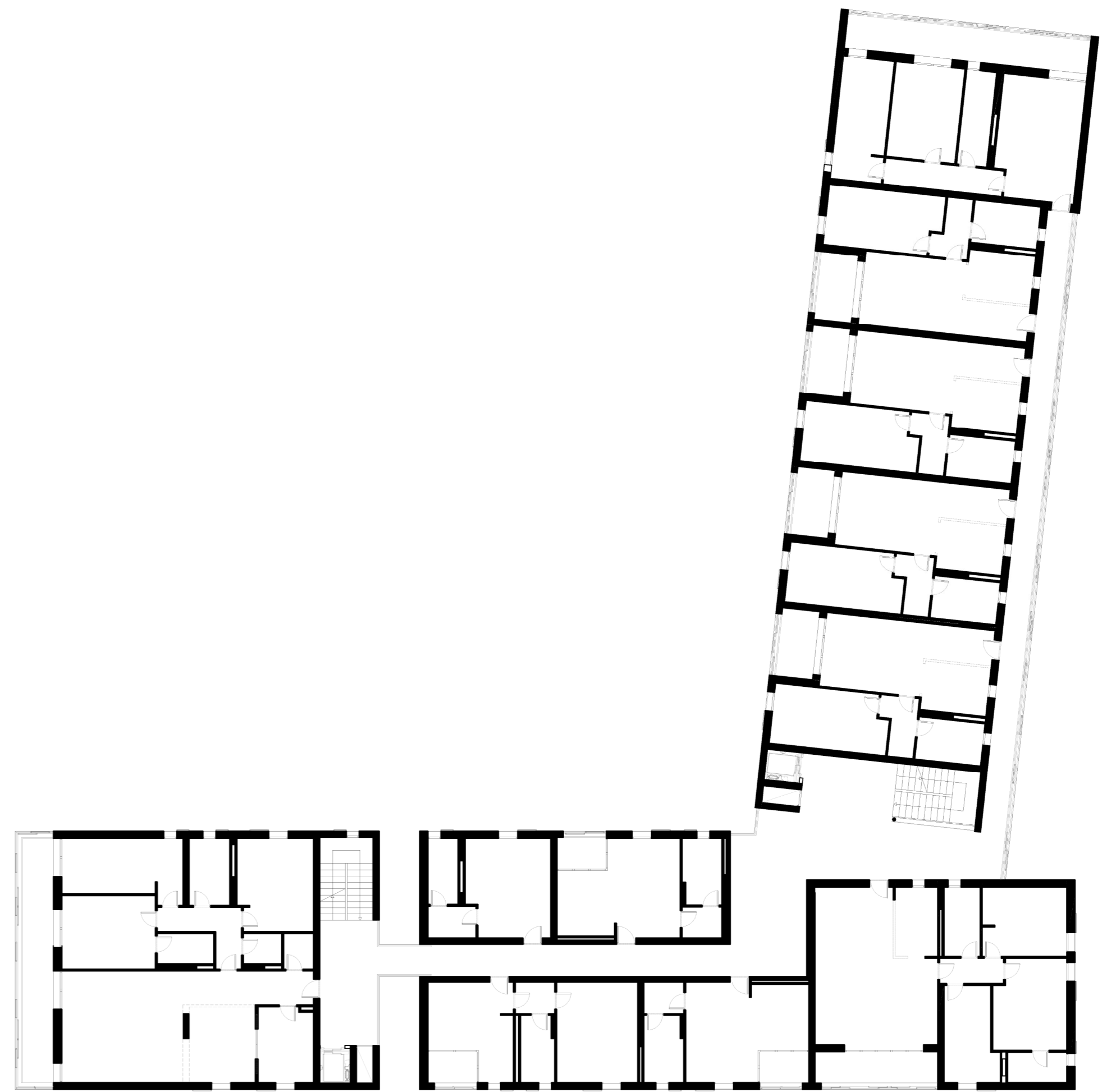


tagli alloggi 1\_500

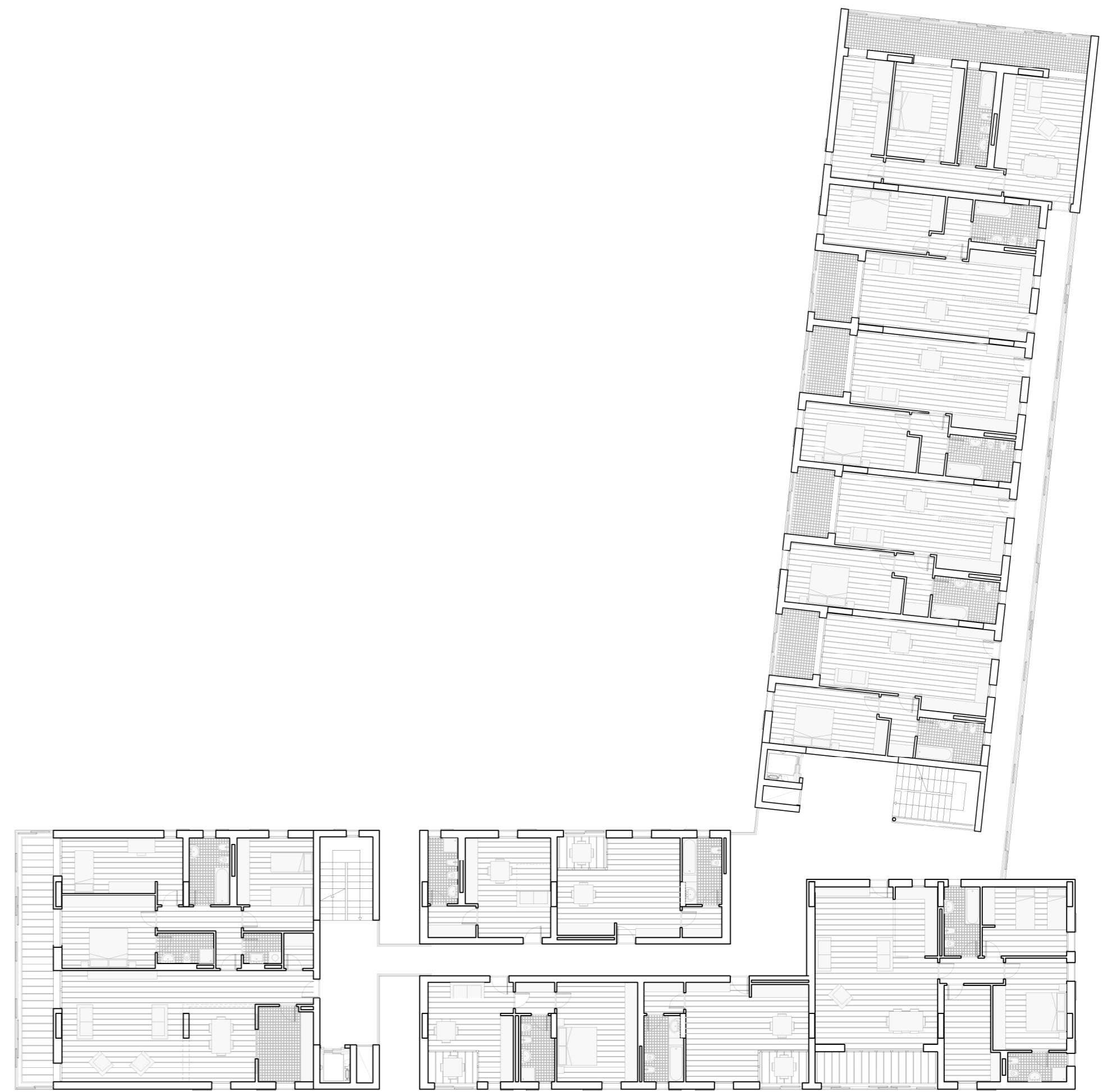
- 1\_ Pilastro in C.A.
- 2\_ Blocchi Gas Beton sp.20 cm
- 3\_ Isolamento termico a cappotto sp.11 cm
- 4\_ Serramento in alluminio anodizzato
- 5\_ Asola cucina/bagno
- 6\_ Scorrevoli e parapetto in alluminio anodizzato
- 7\_ Tramezze interne in cartongesso sp. 20 mm con isolamento sp.50 mm e profilo a C 60x30 mm
- 8\_ Muro divisorio in blocchi di Gas Beton sp.10 cm con isolamento termico sp.70 mm
- 9\_ Serramento con scorrevole in alluminio anodizzato



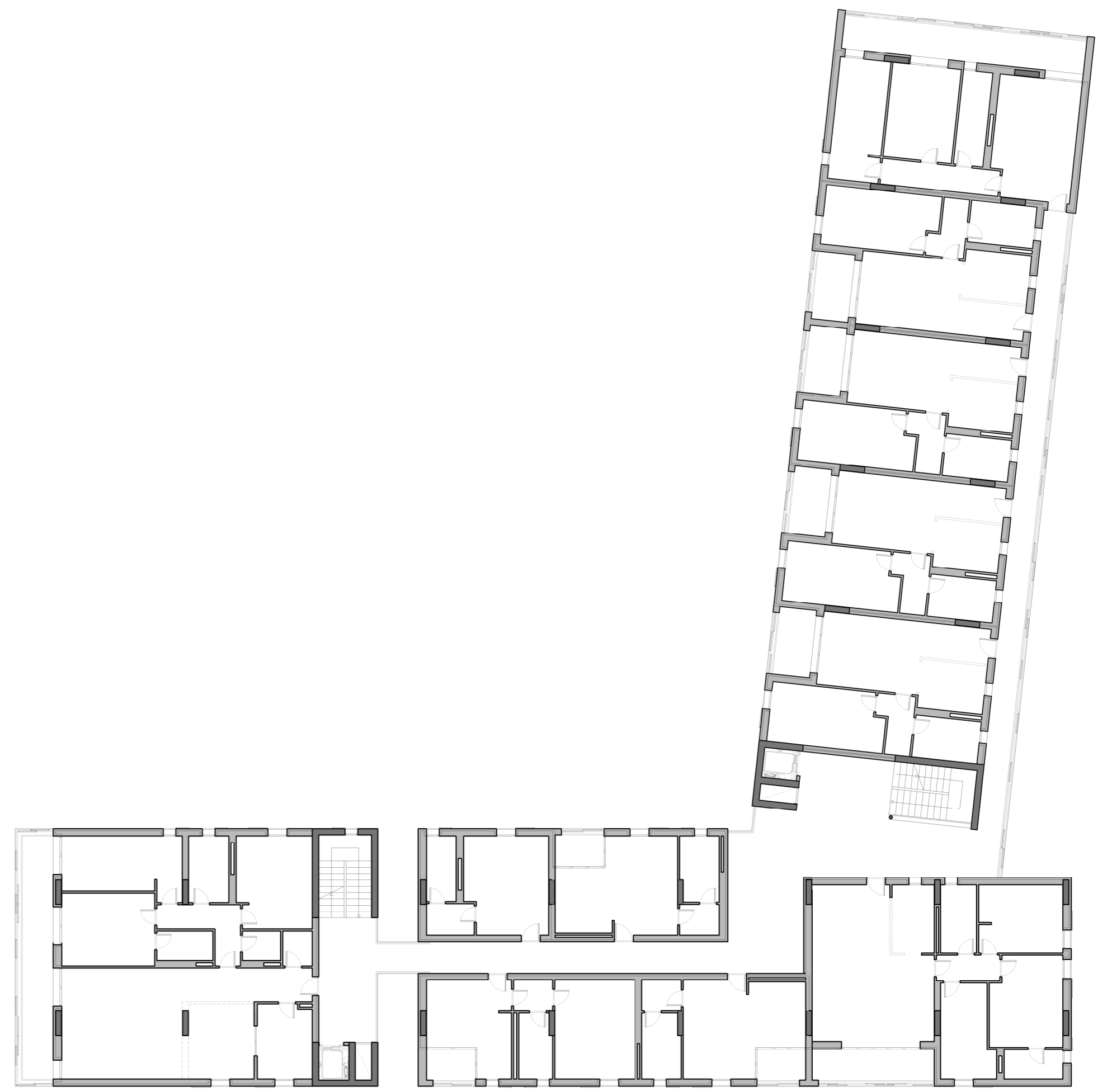
pianta alloggio 1\_50



pianta\_tipo edilizio



pianta\_usi e funzioni



pianta\_involucro e strutture