

POLITECNICO DI MILANO
Facoltà di Architettura e Società
Corso di laurea in Architettura

EXCURSUS E PROGETTAZIONE DI UN CONDENSATORE OFF-SHORE

Relatore: Matteo Aimini
Studenti: Matteo Zorzi, 740715
Michele Gemmi, 736613
a.a. 2011-2012

INDICE

- Abstract
- Tavola 1: lo sviluppo del turismo
- Tavola 2: programma
- Tavola 3: planimetria
- Tavola 4: piante
- Tavola 5: sezioni

Fotografie modello

ABSTRACT

Dal punto di vista turistico/economico, i luoghi attrattivi sono risorse, caratterizzati da fattori naturali ed artificiali che definiscono il loro potenziale.

I tour operator hanno il compito di organizzare le località turistiche come meglio possono, confrontandosi con risorse limitate per massimizzare il beneficio dei visitatori.

Il sito turistico è processo e output allo stesso tempo.

L'obiettivo principale è soddisfare le aspettative dell'utente: la maggior parte dei bisogni sono proposti e potenziati dagli operatori, attraverso attrazioni e attività organizzate, spesso banali e grottesche imitazioni.

Le aree turistiche sono commercializzate come beni dagli operatori, promuovendo e vendendo bellezze naturali e culturali come venditori di automobili.

Osservando la storia, è facile notare come il turismo d'élite traccia la rotta per quello di massa, e quanto la domanda turistica è influenzata da brand e trend volubili.

Sin dalla democratizzazione dell'edonismo la tendenza è quella di andare oltre a quello che manca nel luogo dove viviamo, cercando l'ultimo paradiso scoperto in ordine di tempo.

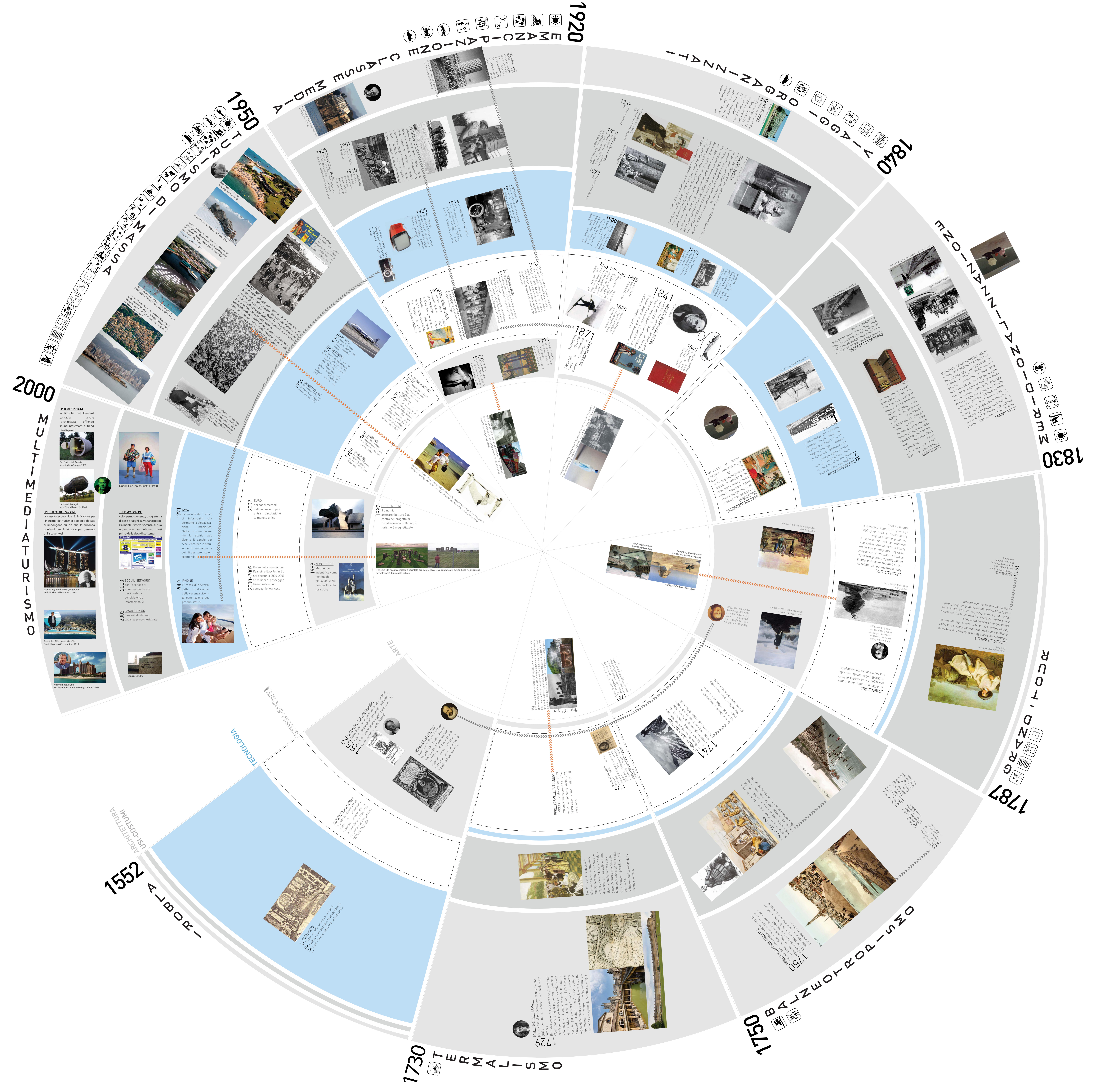
Il passo successivo è scoprire che l'ultimo paradiso è solo una cartolina.

Quello che non cerchiamo, nel ritratto iconico di questo paesaggio, sono le leggi che regolano l'industria del turismo e le dinamiche socio-economiche basate su processi ineluttabili e sul consumo di terra. Il turismo è generalmente una fetta importante del prodotto interno lordo di una nazione. L'economia necessita del turismo, il turismo ha bisogno di terra, la terra vive di risorse.

Come sviluppare la terra senza distorcere il paesaggio?

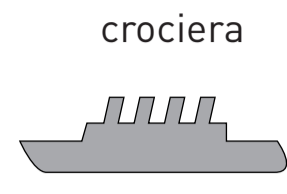
Sono possibili forme alternative di turismo?

Questo è l'amletico dilemma.

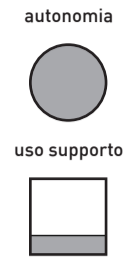


Σ operazioni casi studio > FORMA*

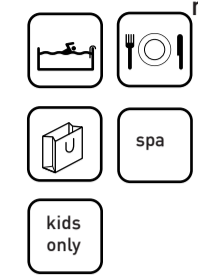
*ogni operazione sublima e vanifica la precedente



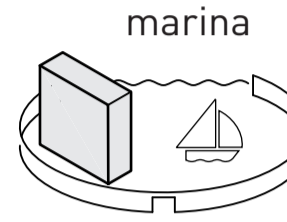
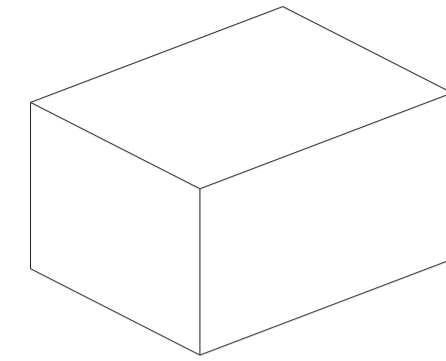
crociera



Italia	camere	da 16mq	utenti	superficie	densità
MSC Fantasia	1667	a 51mq	3274	12.654 mq	0.295 u/mq
Oasi of Seas	camere	equipaggio	utenti	superficie	densità
	2700	2165	5400	225.282	0.266 u/mq



AGGLOMERAZIONE



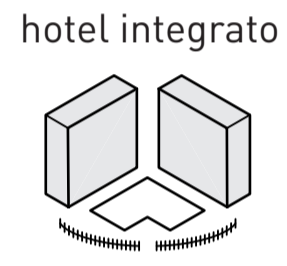
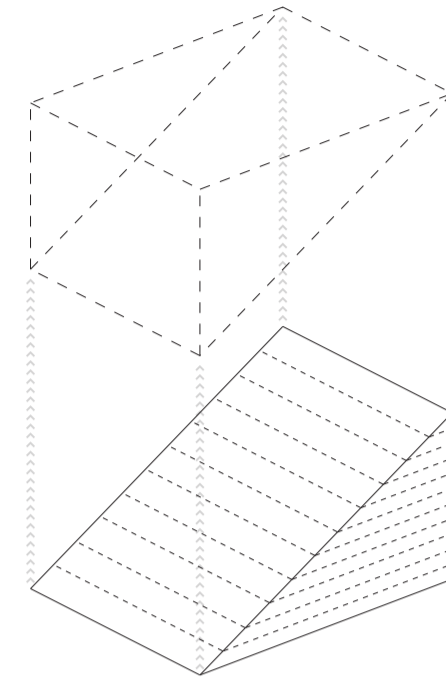
marina



Francia	camere	da 80mq	utenti	superficie	densità
Baies des Anges		a 100mq		23 ha	
Francia	camere	da	utenti	superficie	densità
Port Grimaud					



STRATIFICAZIONE



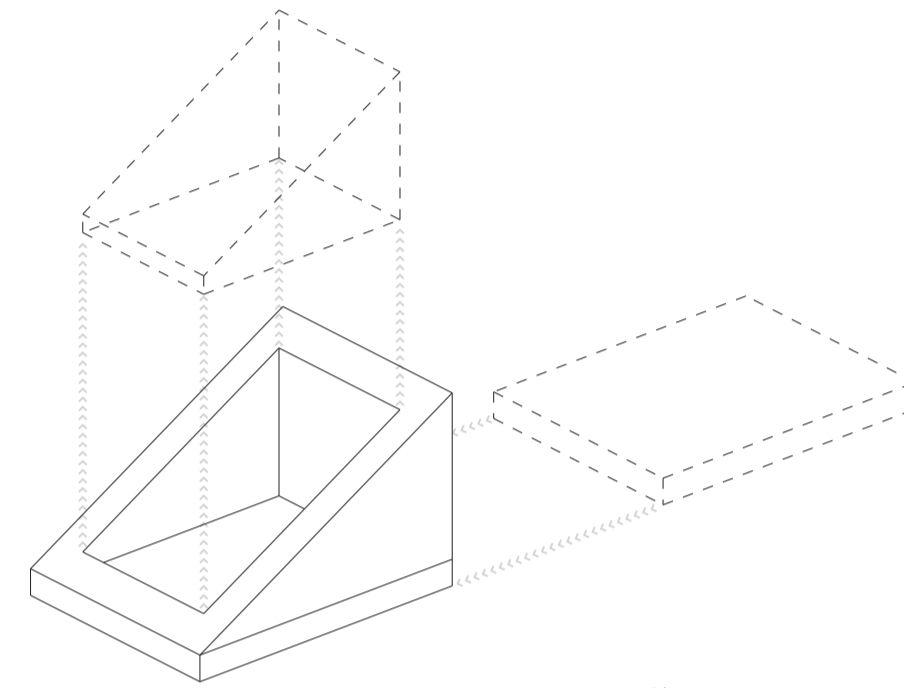
hotel integrato



Mexico Cancun	camere	da 44mq	utenti	superficie	densità
Hotel Melia	360	a	1352	60.000 mq	0,023 u/mq
Mexico Cancun	camere	da	utenti	superficie	densità
Hotel Me					



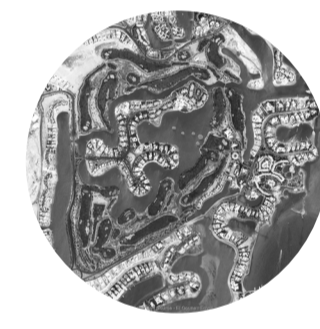
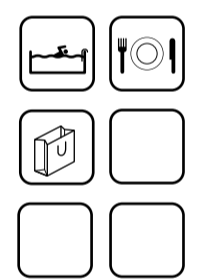
CREAZIONE SPAZIO APERTO



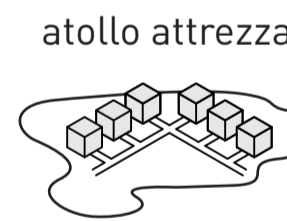
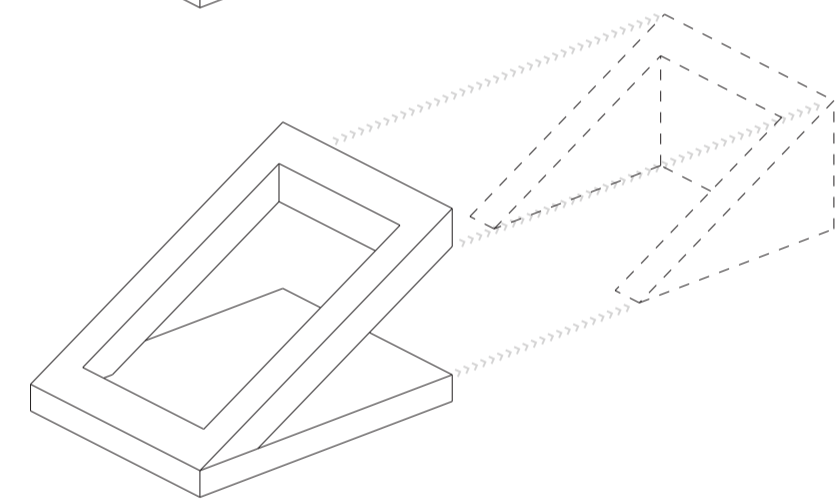
villaggio club



Francia	camere	da 80mq	utenti	superficie	densità
Pierre & Vaconces		a 100mq		4.350.000 mq	
Regno Unito	camere	da	utenti	superficie	densità
Elveden	730	a	2000	1.618.000 mq	0,002 u/mq



CIRCOLAZIONE CONTINUA



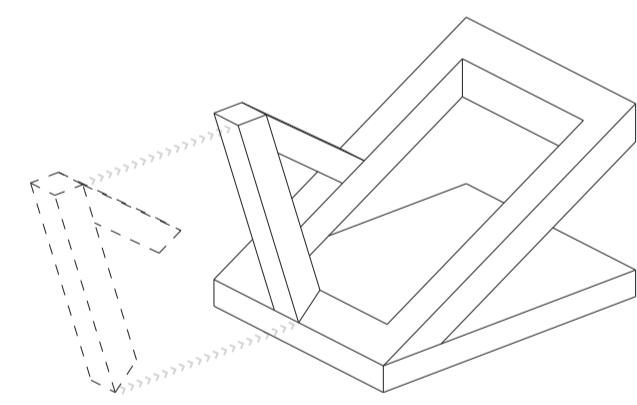
atollo attrezzato



Maldive	camere	da 135mq	utenti	superficie	densità
Only & One	130	a 240mq	260	440.000 mq	0,00068 u/mq
Maldive	camere	da	utenti	superficie	densità
Club Med					



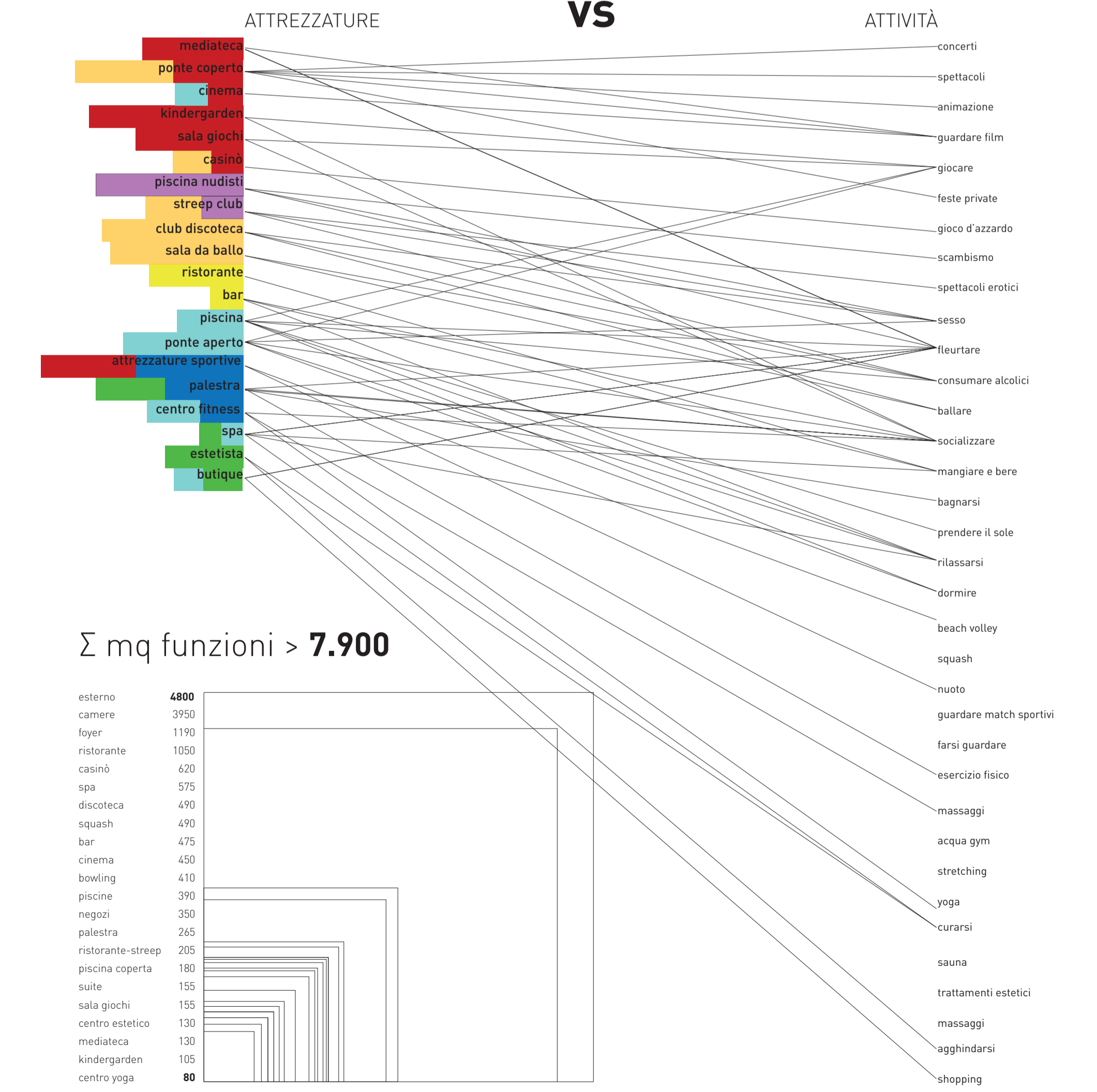
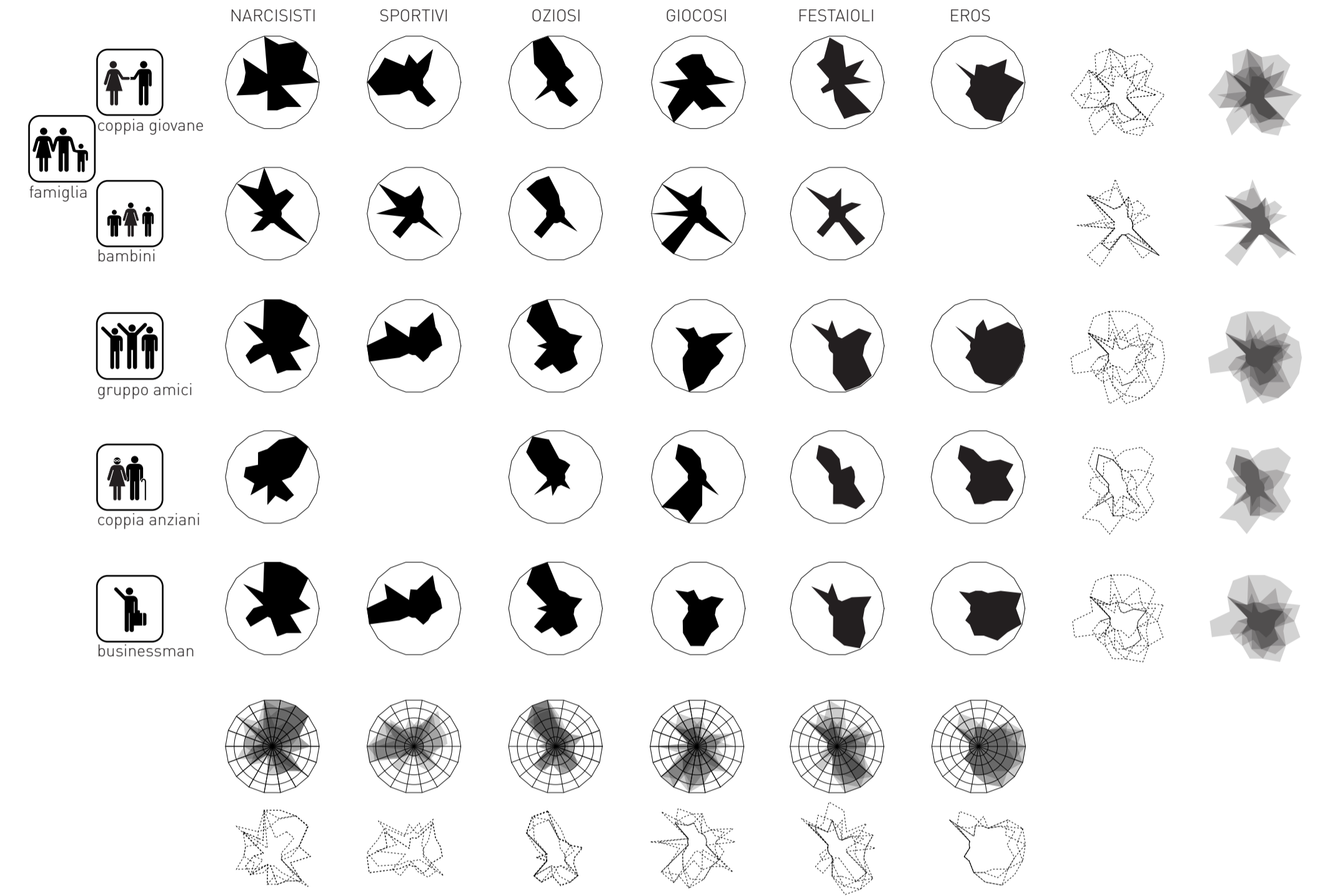
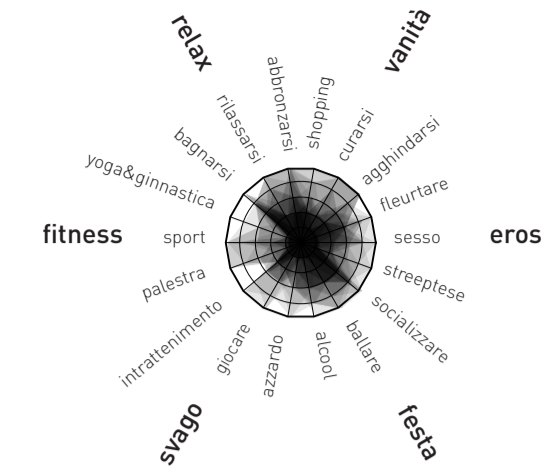
SUPERFETAZIONE



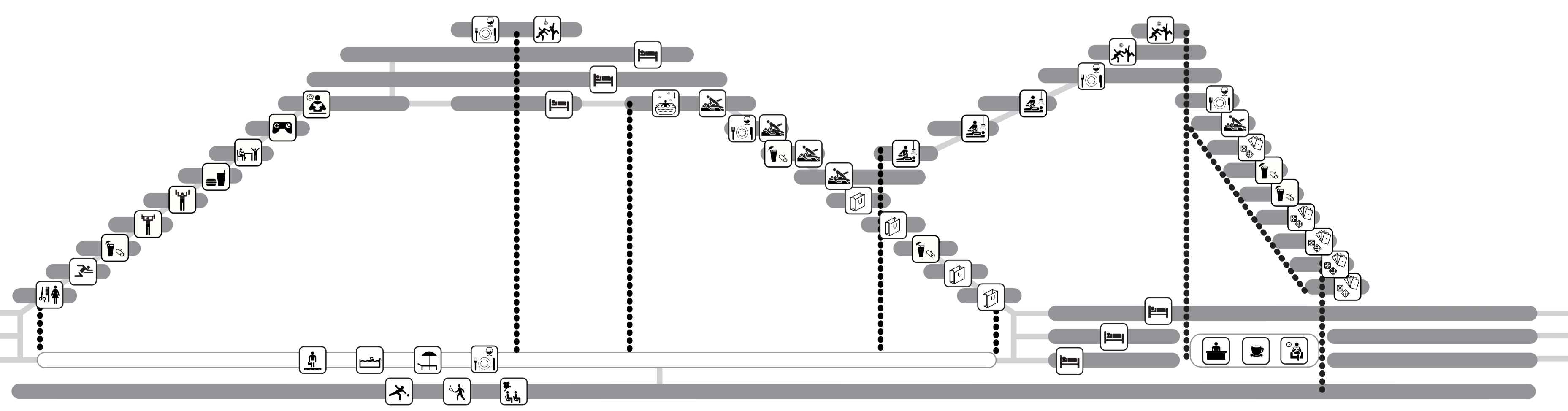
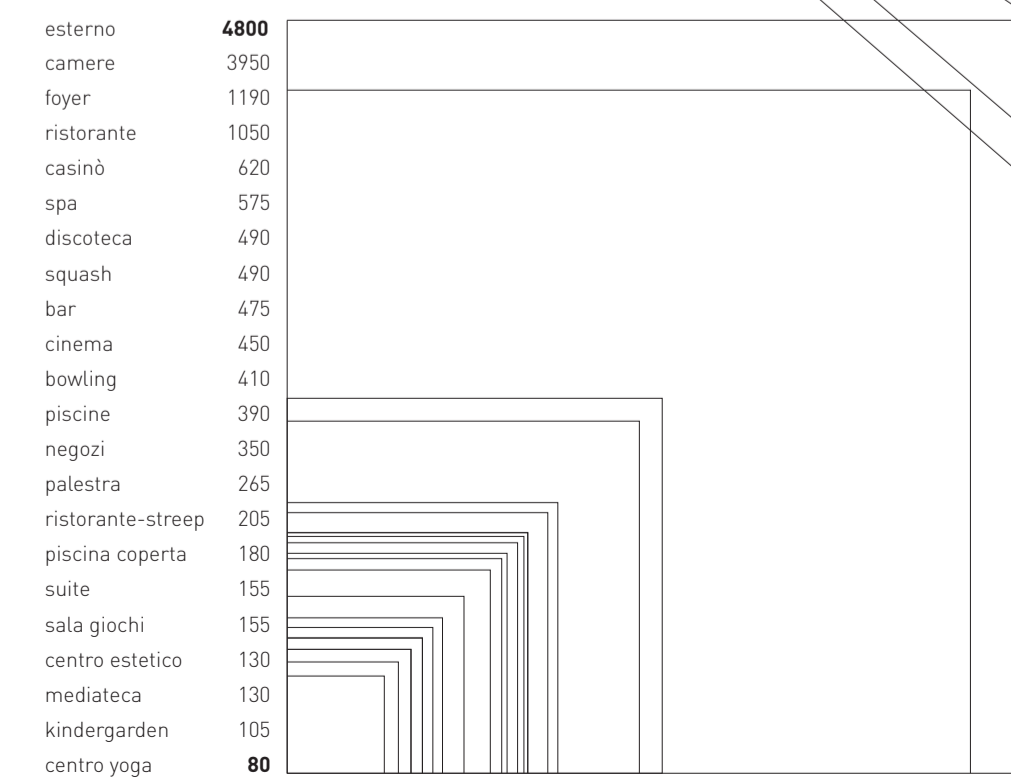
Σ necessità utenti > PROGRAMMA

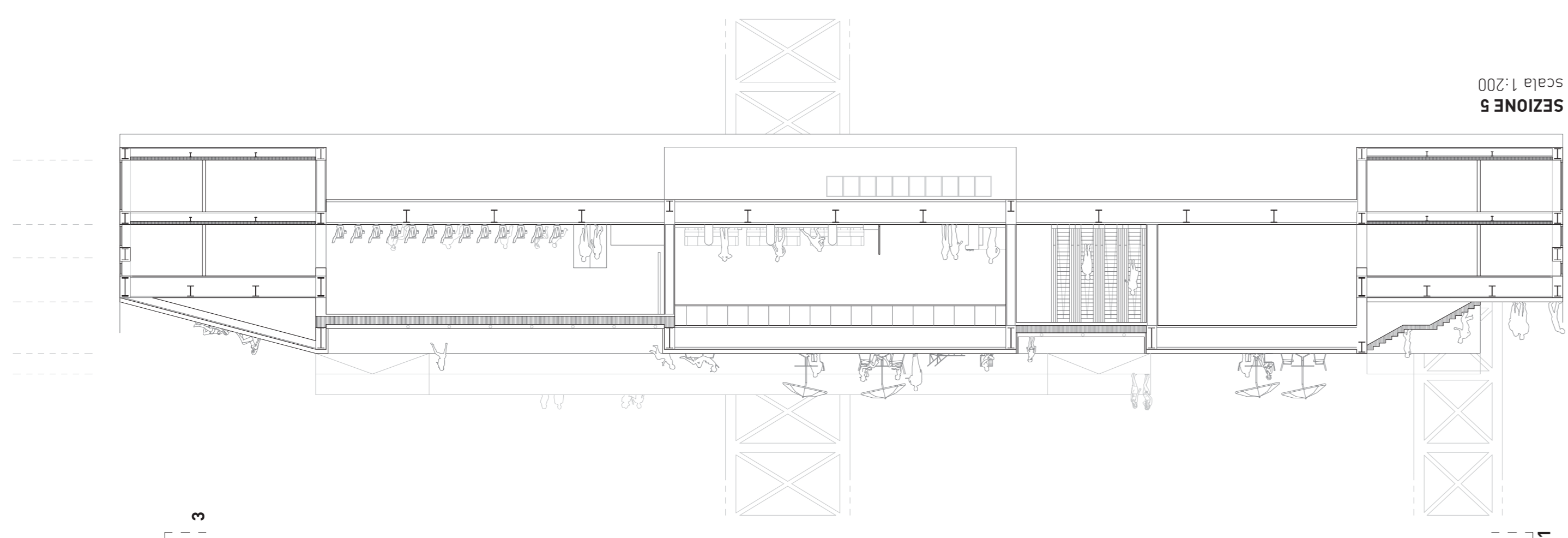


IDENTIKIT TURISTI

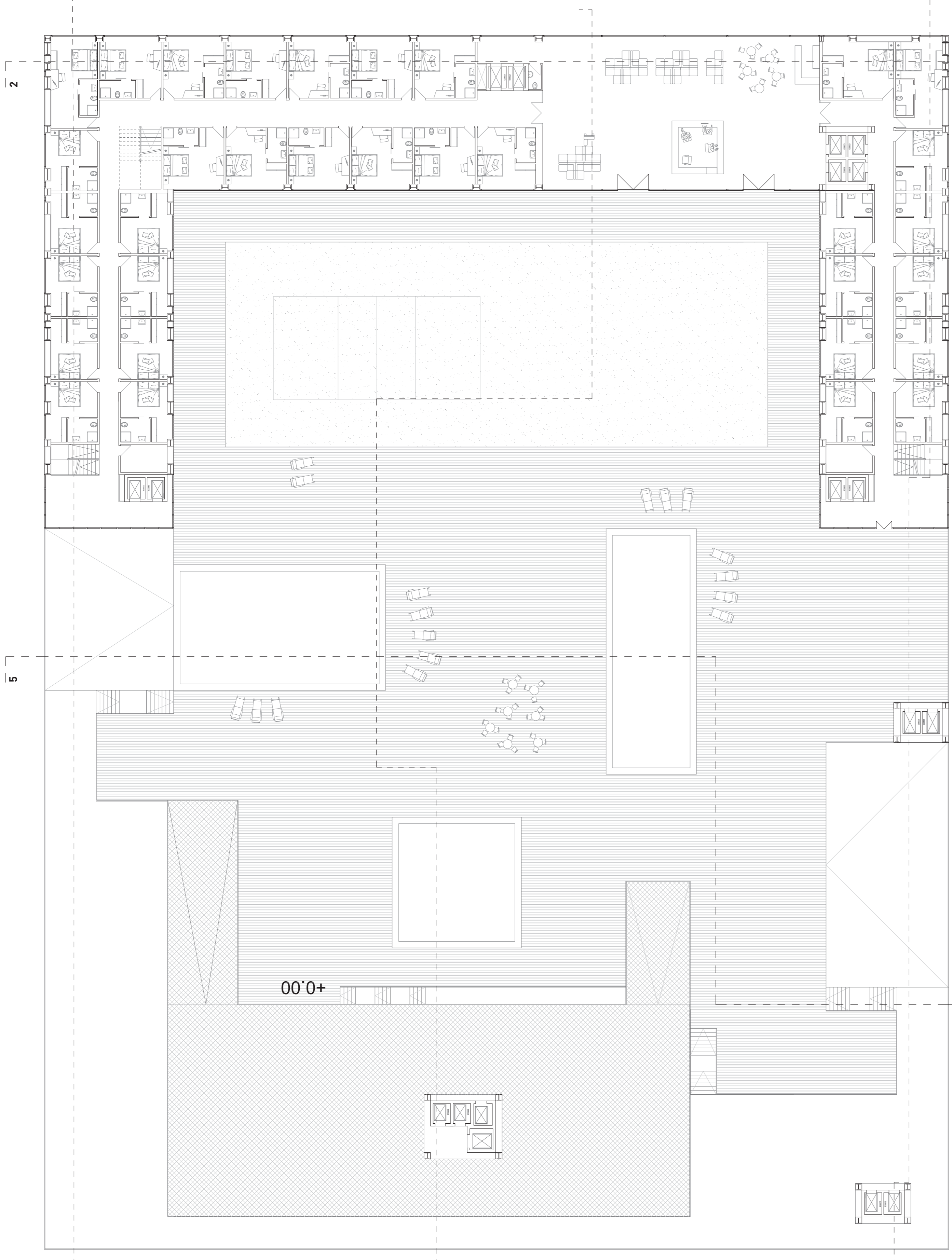


Σ mq funzioni > 7.900

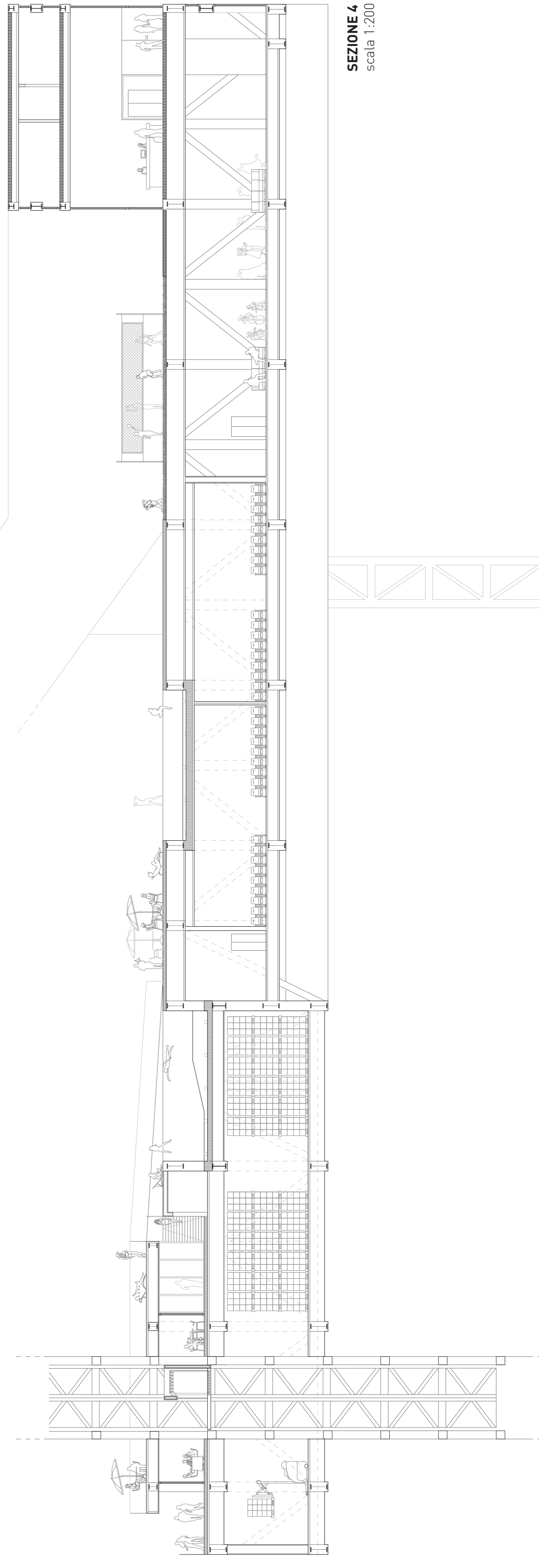




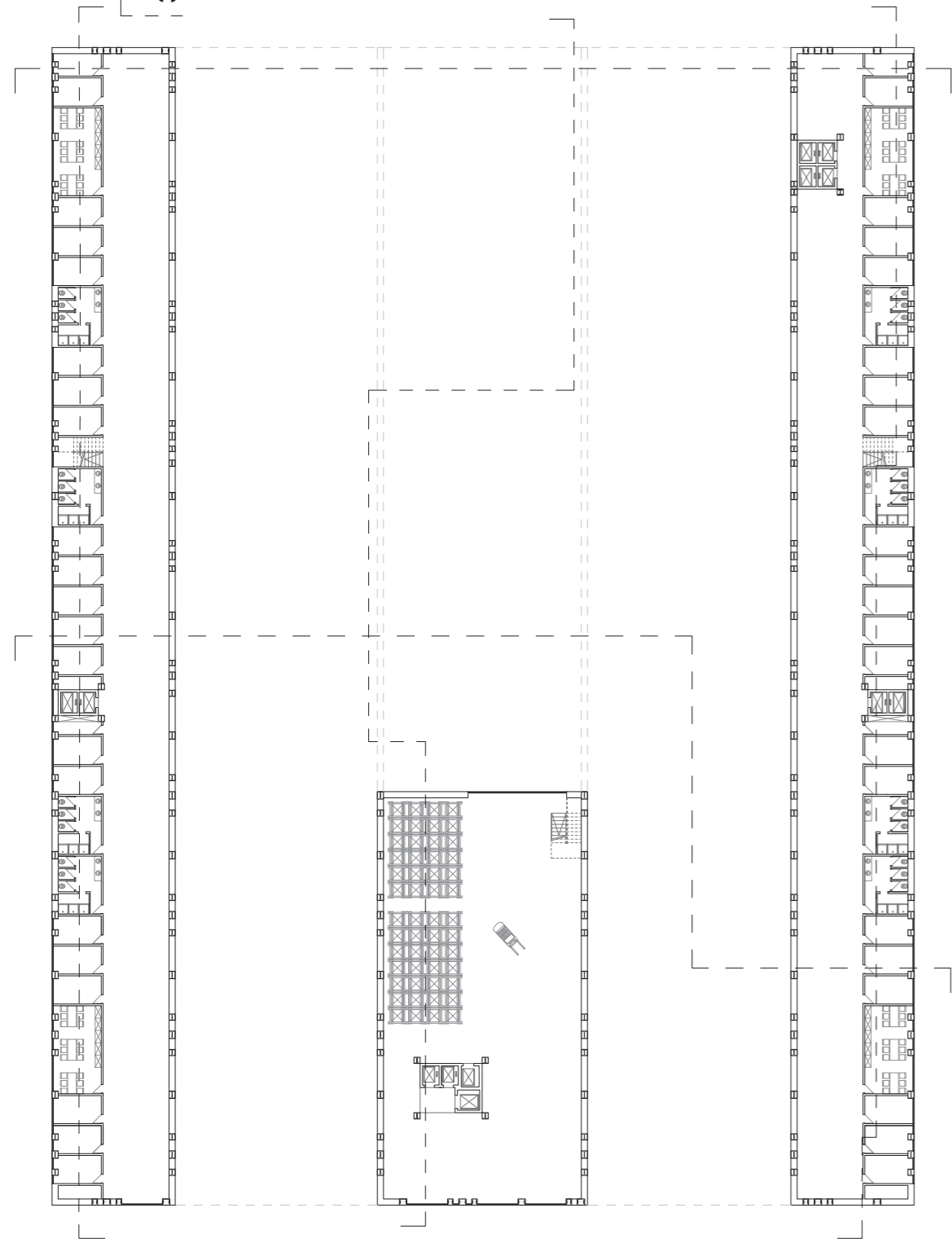
SEZIONE 5
scala 1:200



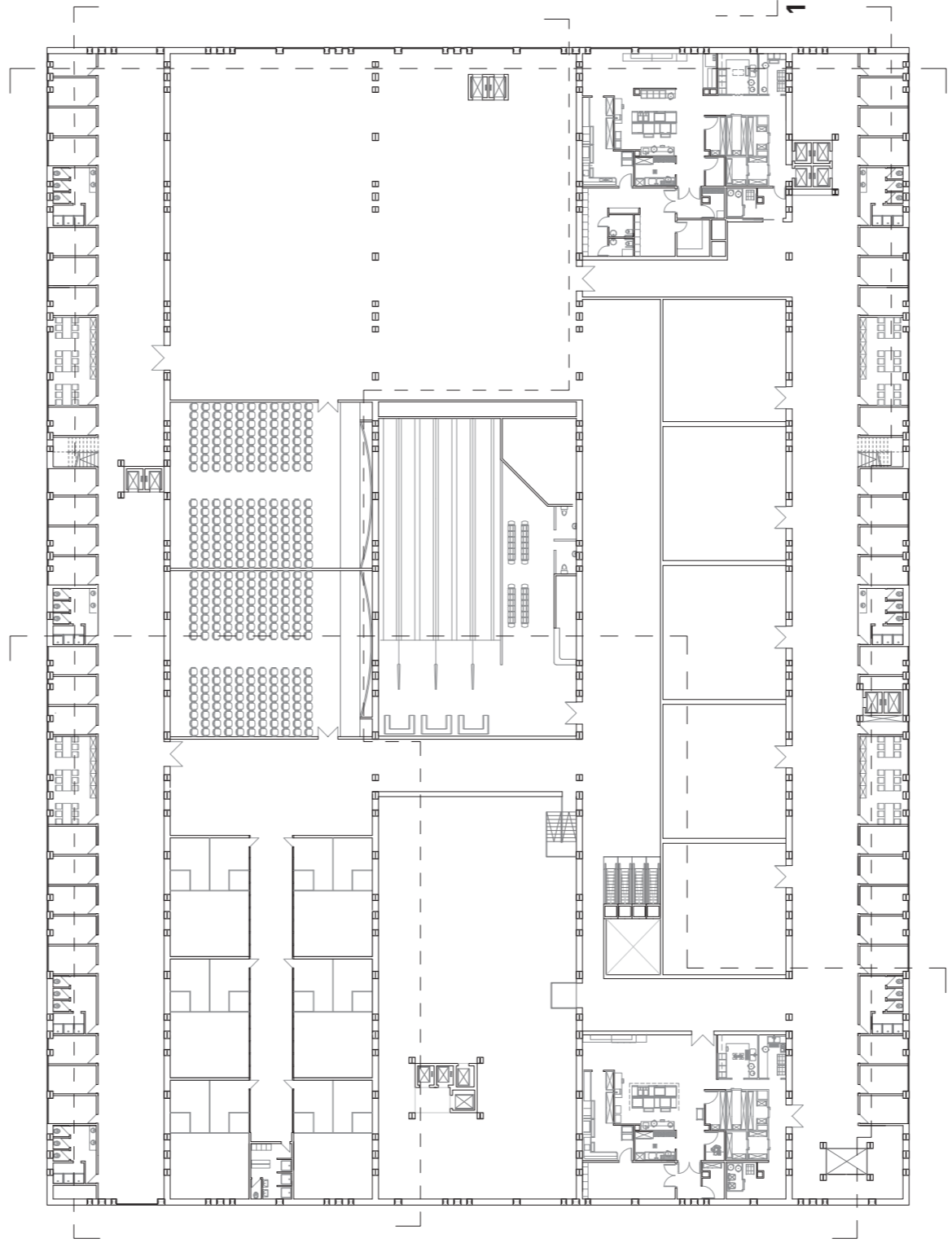
PIANIMETRIA SPAZIO APERTO
scala 1:200



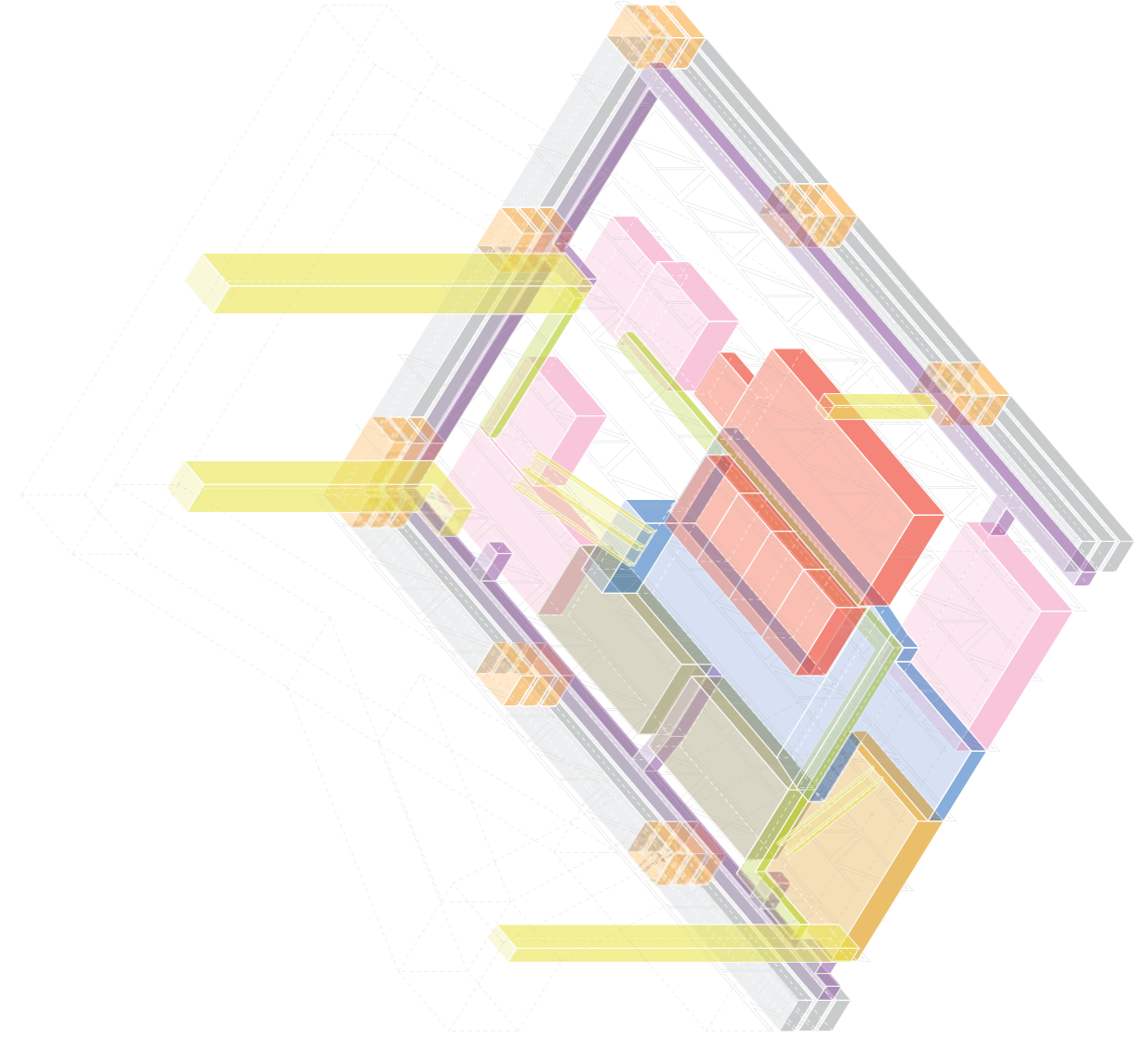
SEZIONE 4
scala 1:200

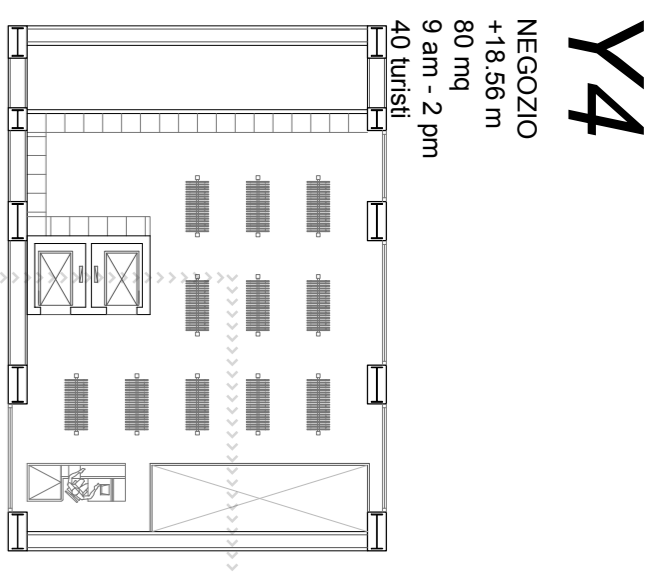


PIANTA LIVELLO -9.38
scala 1:500

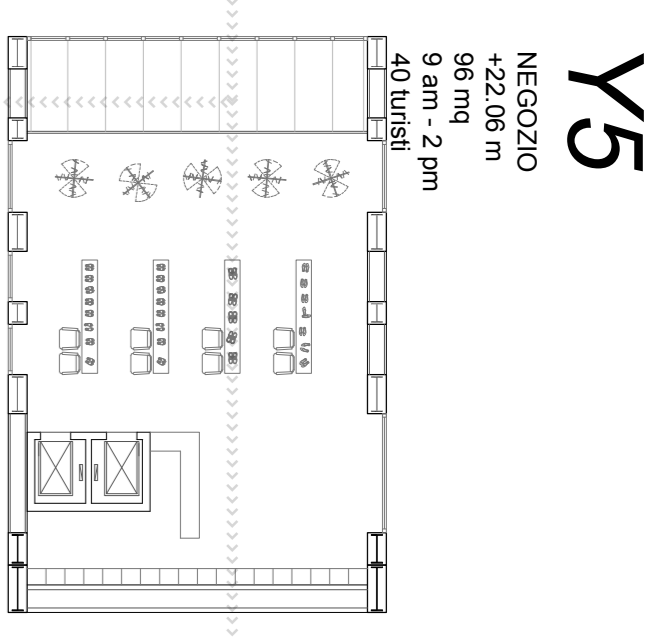


PIANTA LIVELLO -6.25
scala 1:500

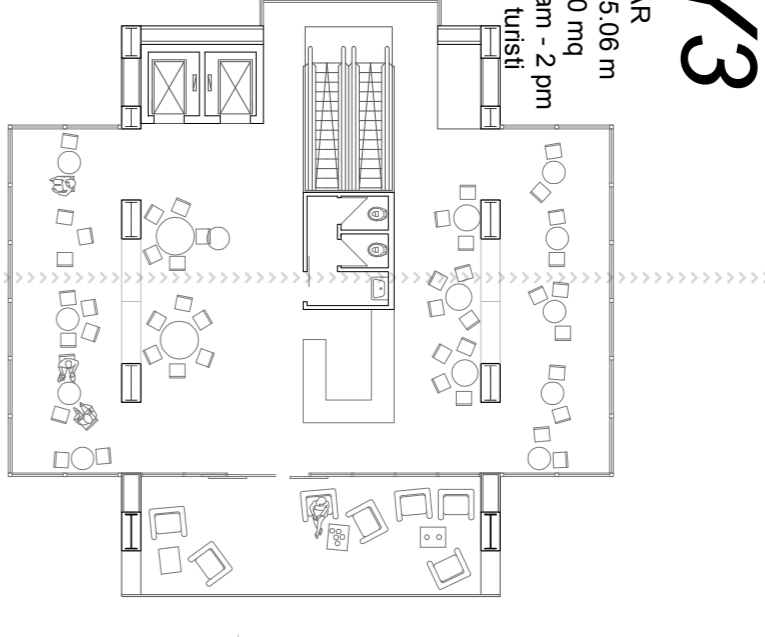




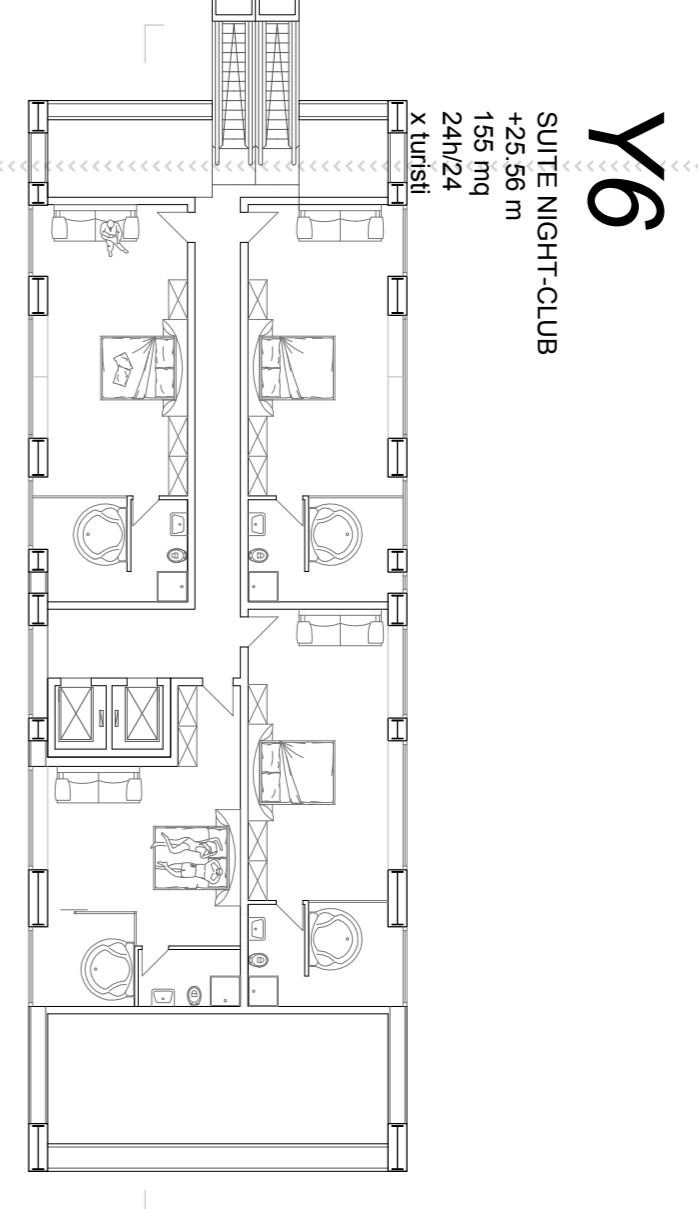
Y4
NEGOZIO
+18,56 m
80 mq
9 am - 2 pm
40 turisti



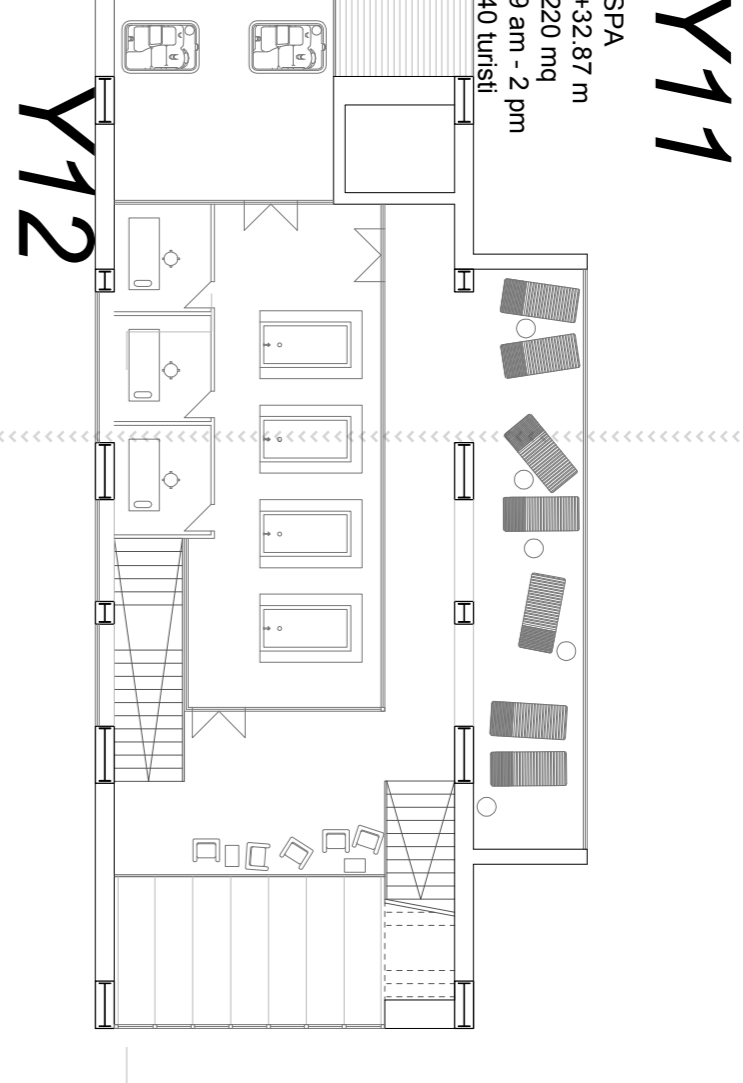
Y5
NEGOZIO
+22,06 m
96 mq
9 am - 2 pm
40 turisti



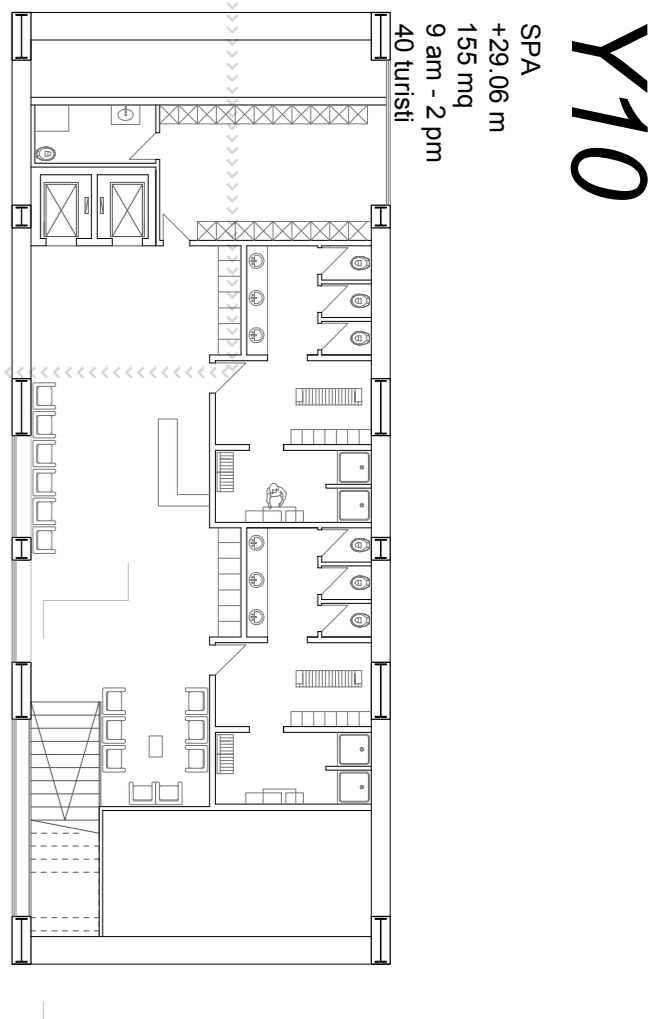
Y3
BAR
+15,06 m
140 mq
8 am - 2 pm
50 turisti



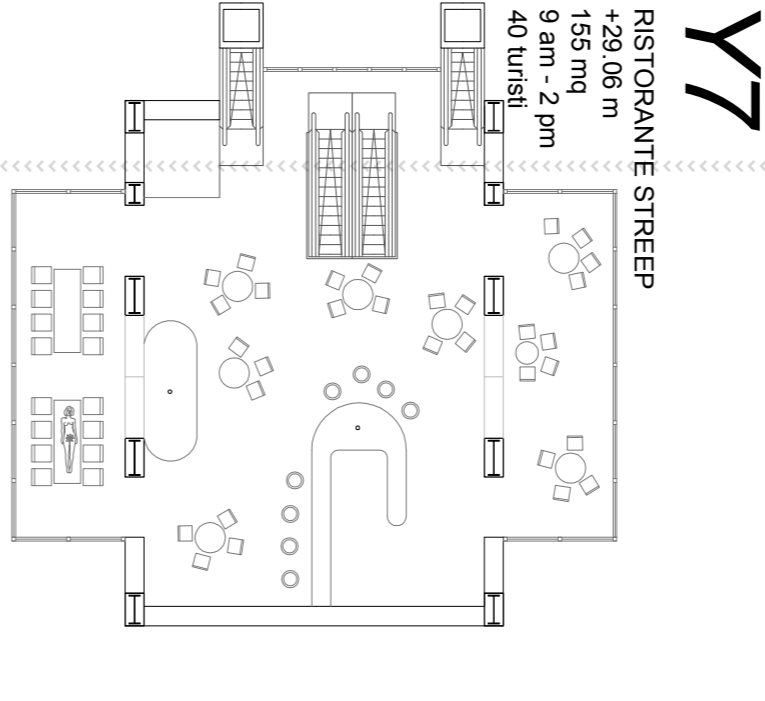
Y6
SUITE NIGHT-CLUB
+25,56 m
155 mq
24h/24
X turisti



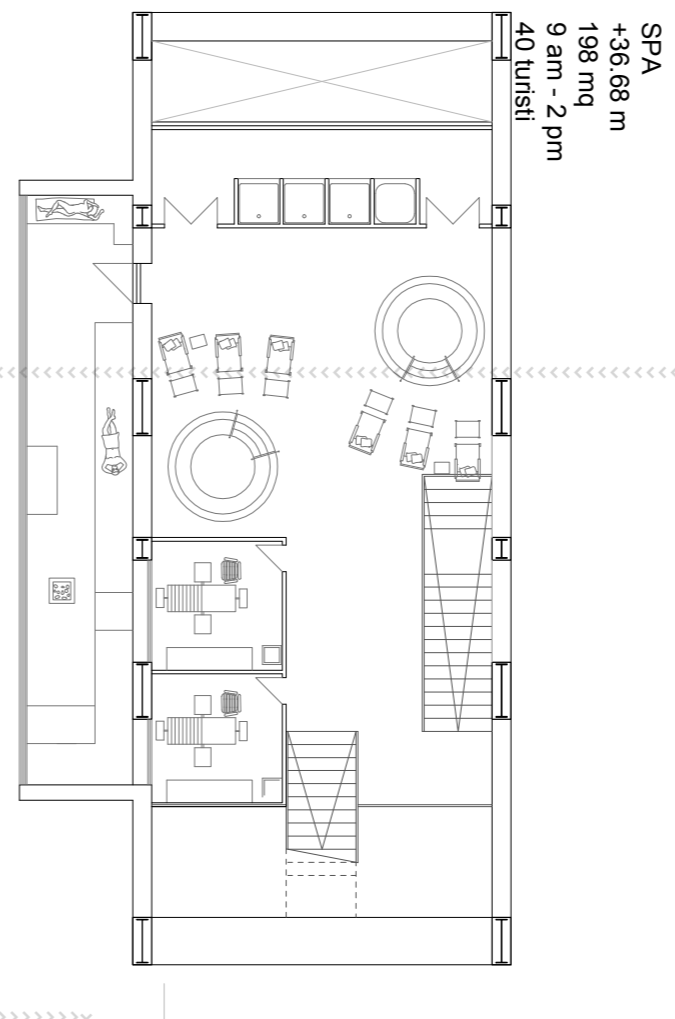
Y11
SPA
+32,87 m
220 mq
9 am - 2 pm
40 turisti



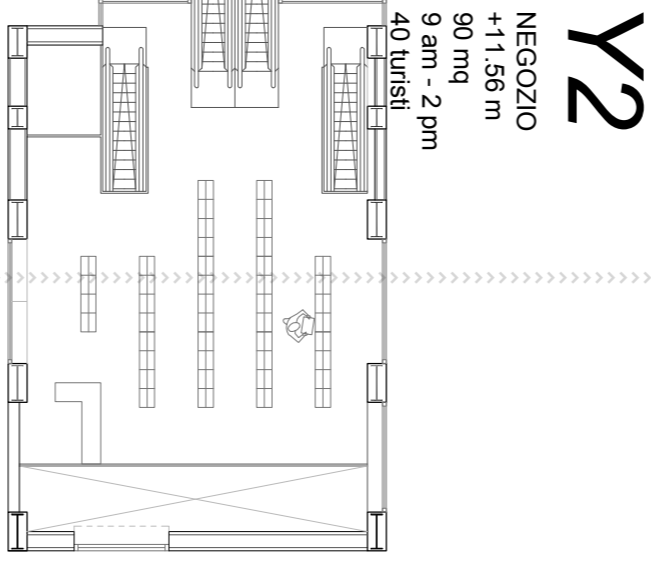
Y10
SPA
+29,06 m
155 mq
9 am - 2 pm
40 turisti



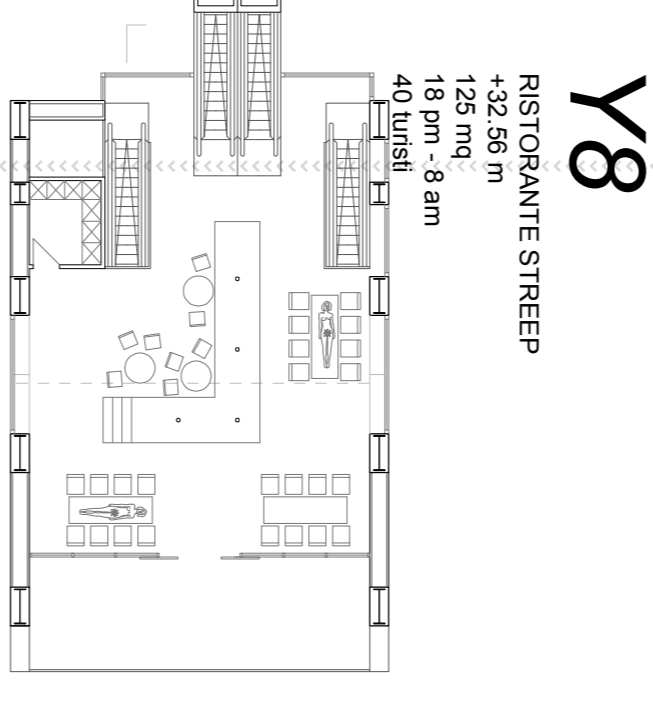
Y7
RISTORANTE STREEP
+28,06 m
128 mq
9 am - 8 pm
40 turisti



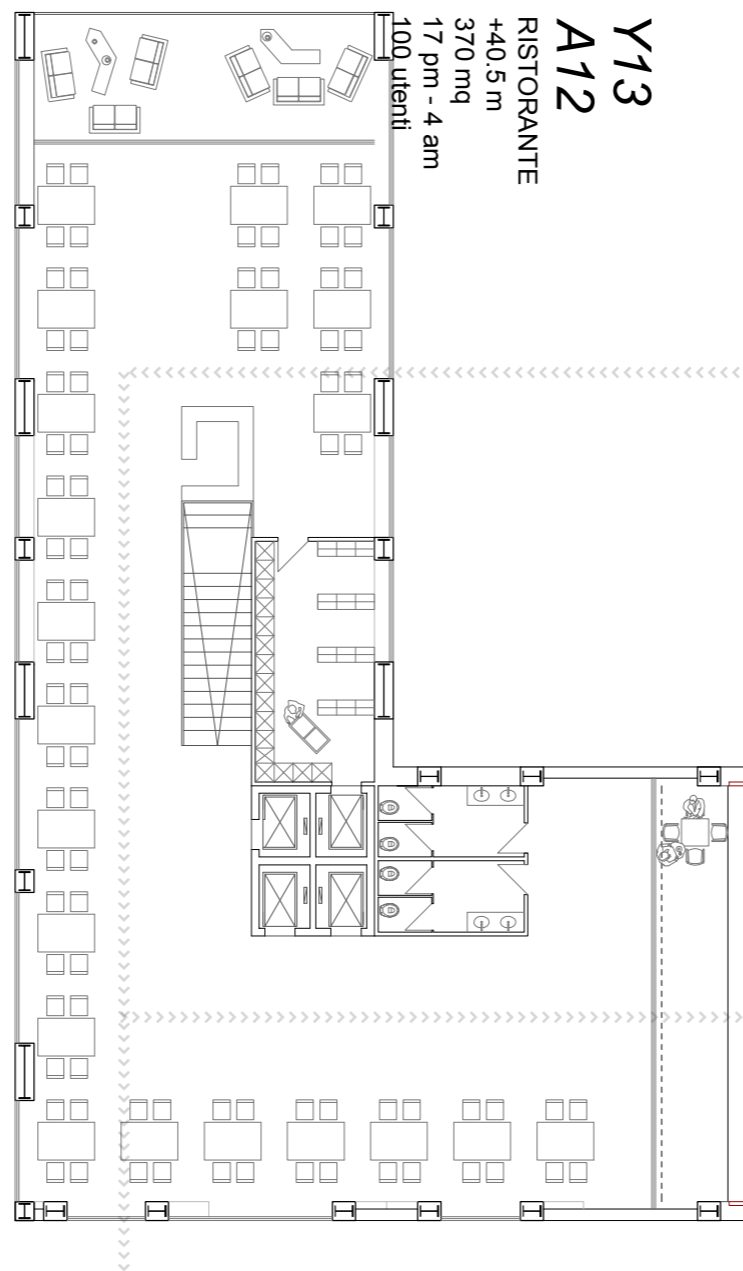
Y12
SPA
+36,68 m
198 mq
9 am - 2 pm
40 turisti



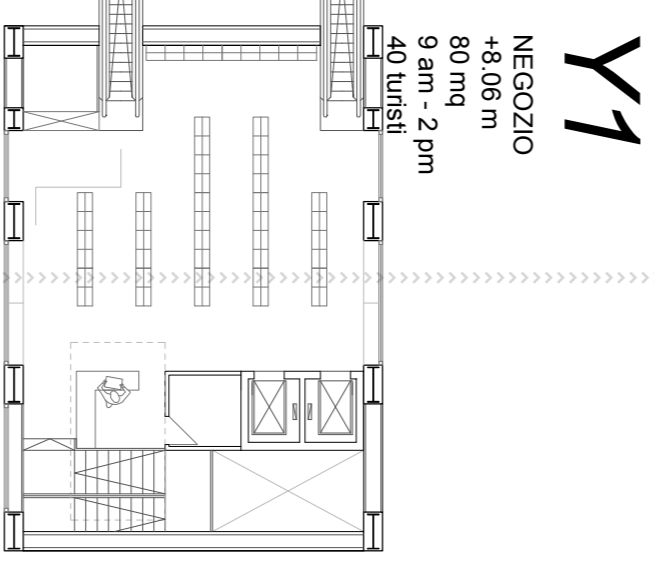
Y2
NEGOZIO
+11,56 m
90 mq
9 am - 2 pm
40 turisti



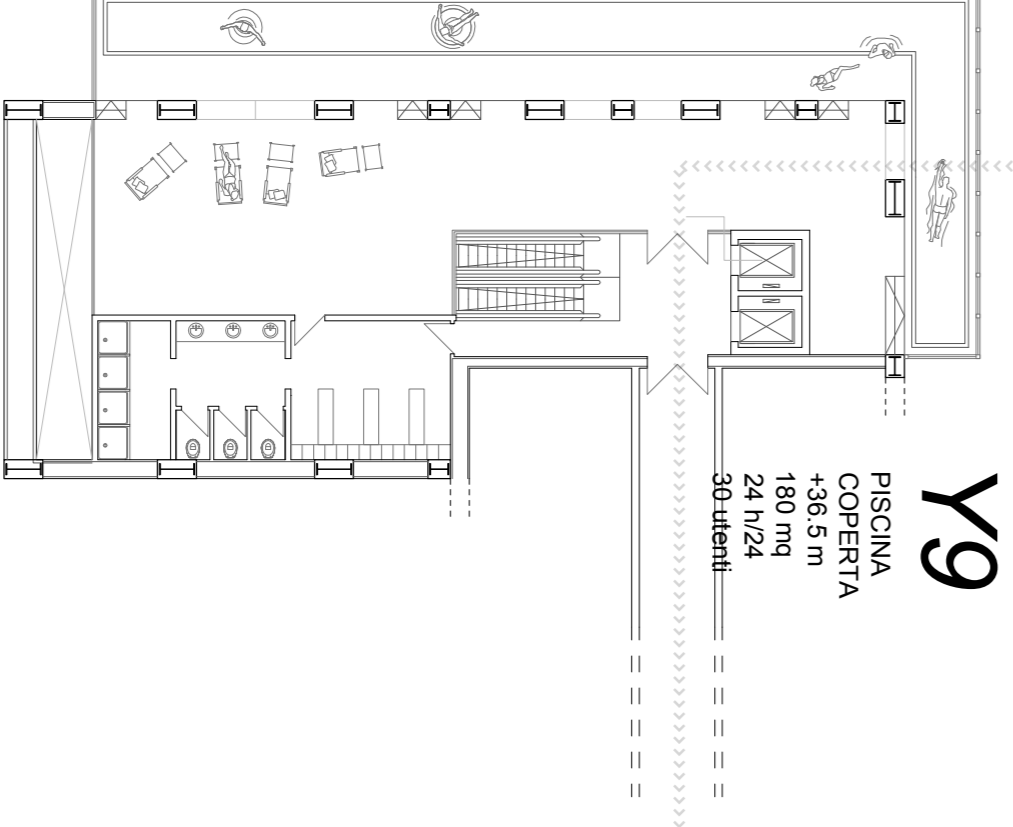
Y8
RISTORANTE STREEP
+32,56 m
125 mq
18 pm - 8 am
40 turisti



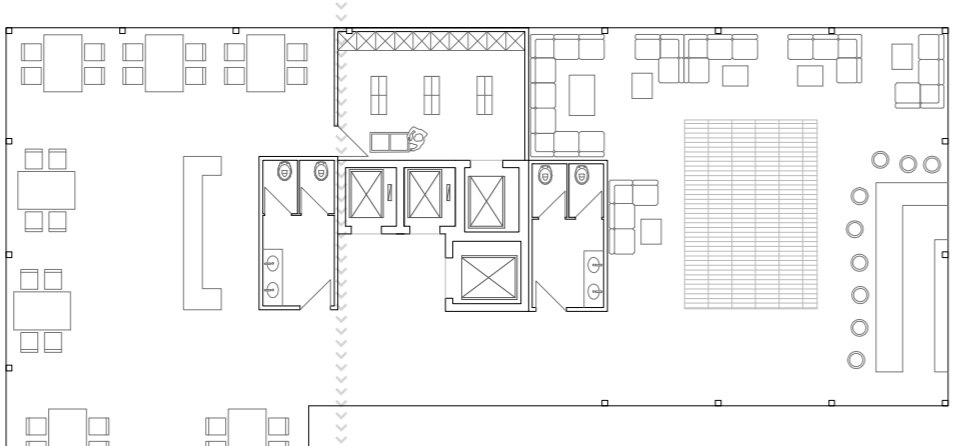
Y13
RISTORANTE
+40,5 m
370 mq
17 pm - 4 am
100 utenti



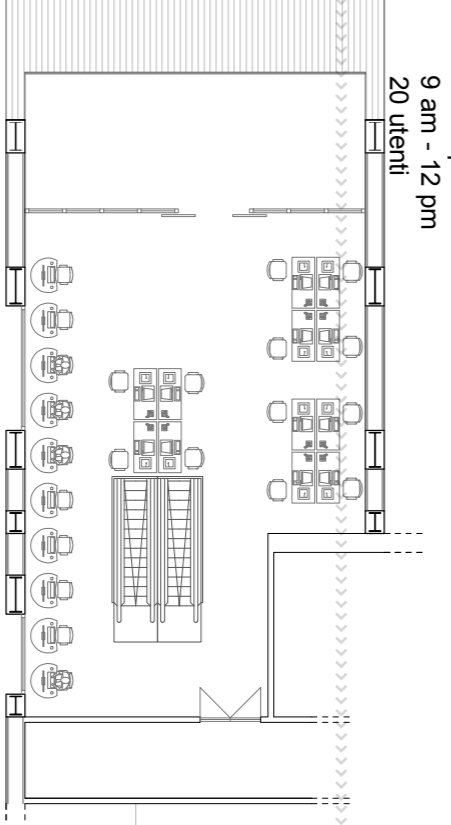
Y1
NEGOZIO
+8,06 m
80 mq
9 am - 2 pm
40 turisti



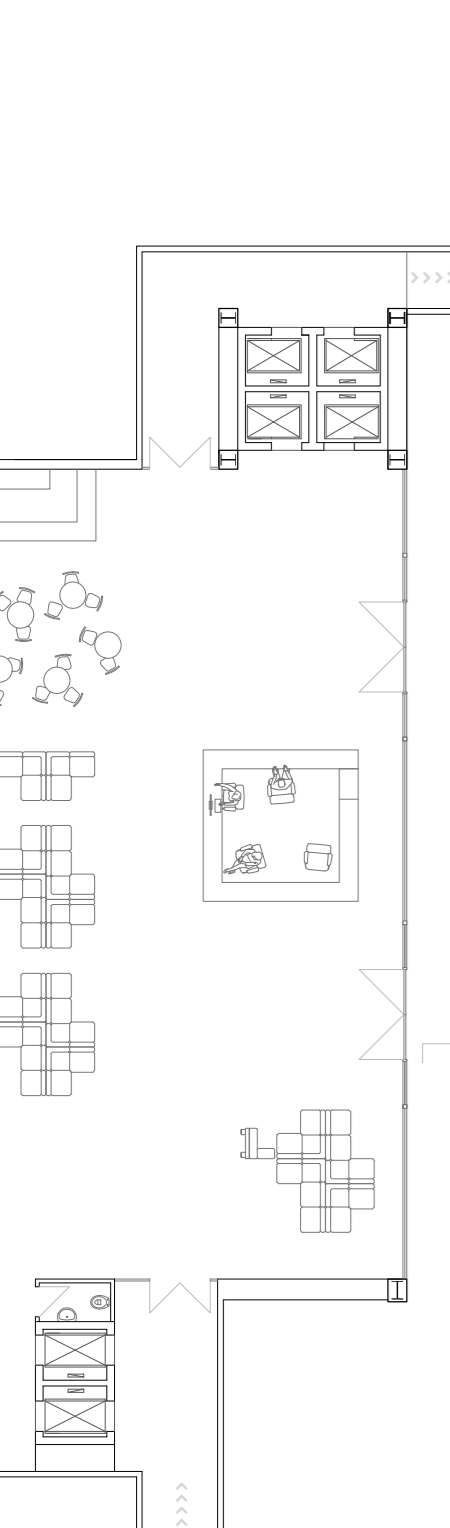
Y9
PISCINA COPERTA
+36,5 m
180 mq
24 h/24
30 utenti



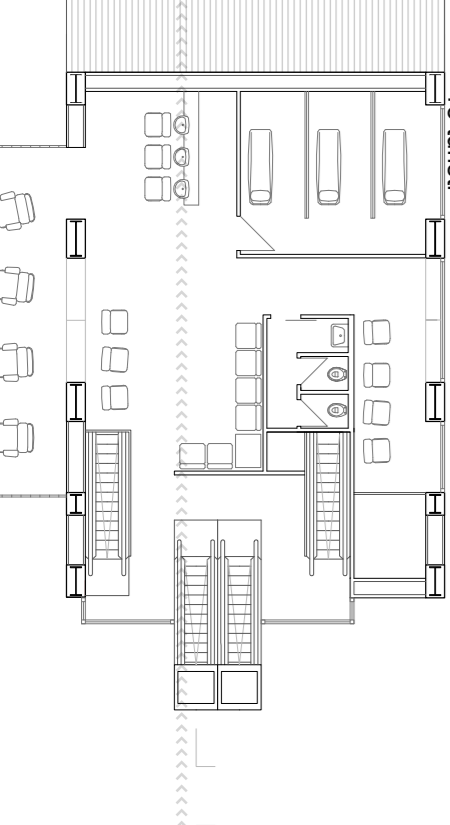
C7
RISTORANTE LOUNGE
+46,00 m
200 mq
12 am - 4 pm
110 utenti



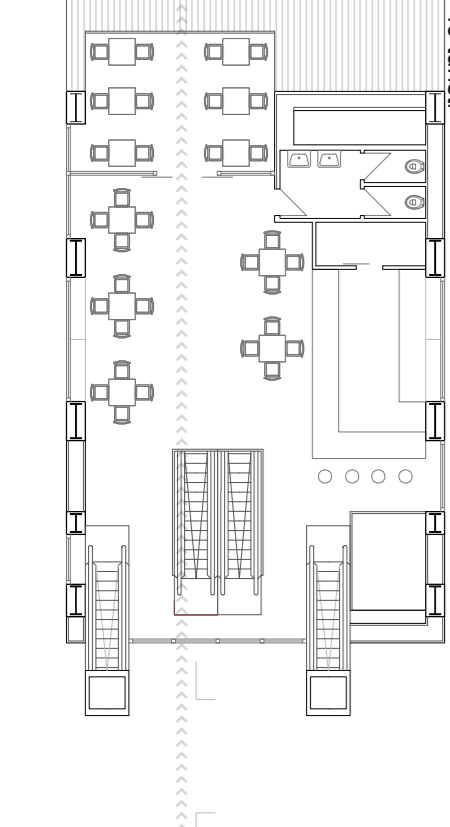
S9
MEDIAECA
+36,5 m
50 mq
9 am - 12 pm
20 utenti



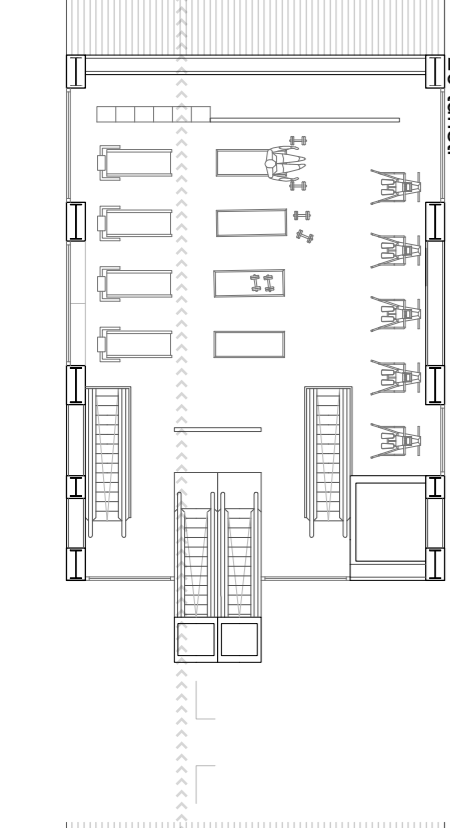
S1
CENTRO YOGA
+8,06 m
80 mq
9 am - 11 pm
40 turisti



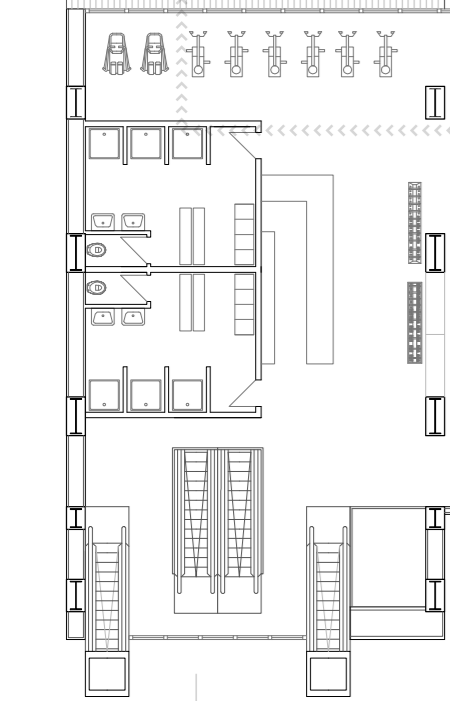
S2
CENTRO ESTETICO
+11,56 m
130 mq
10 am - 2 pm
15 turisti



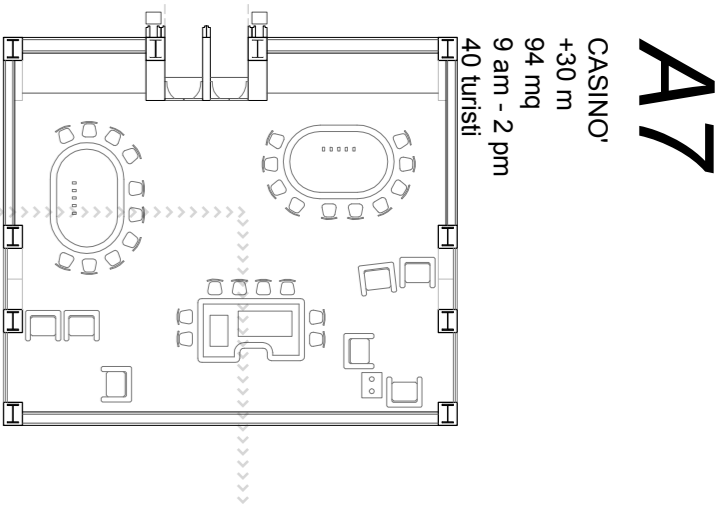
S3
BAR
+15,06 m
110 mq
10 am - 2 pm
40 turisti



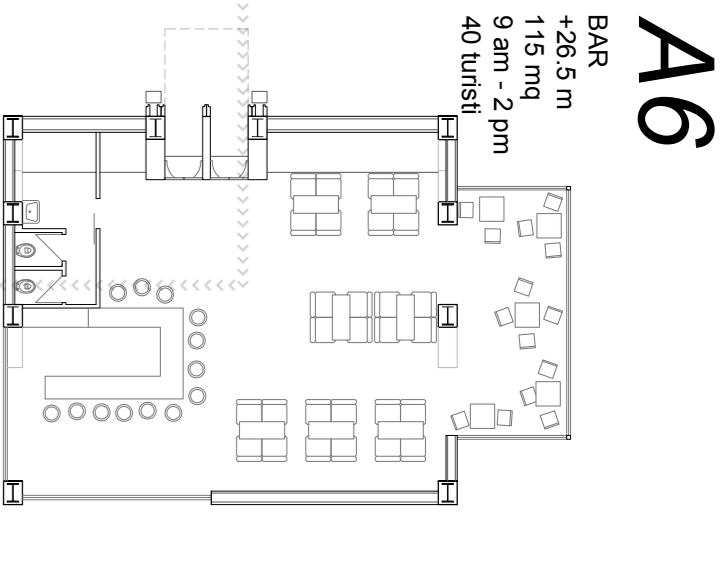
S4
PALESTRA
+18,56 m
100 mq
9 am - 2 pm
20 turisti



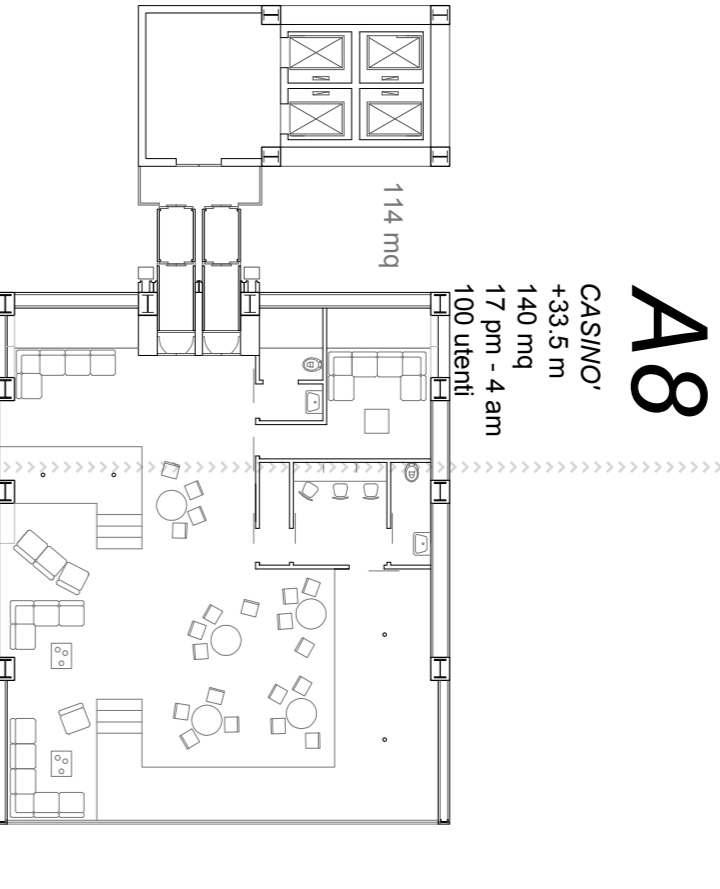
S5
PALESTRA
+22,06 m
164 mq
9 am - 2 pm
20 utenti



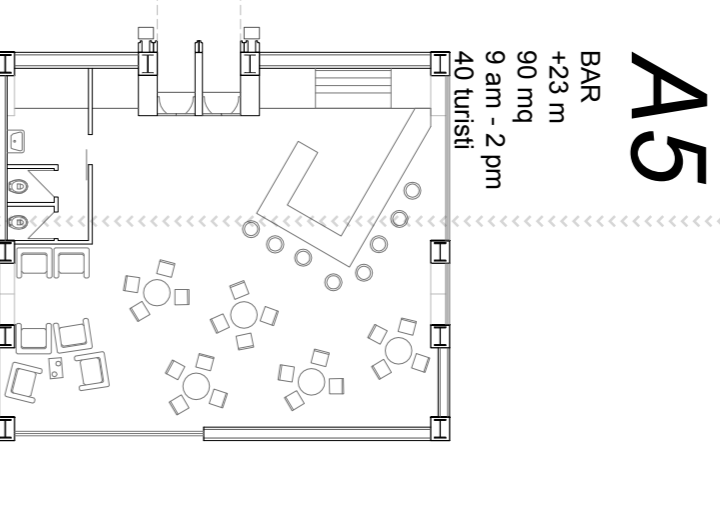
A7
CASINO
+30 m
94 mq
9 am - 2 pm
40 turisti



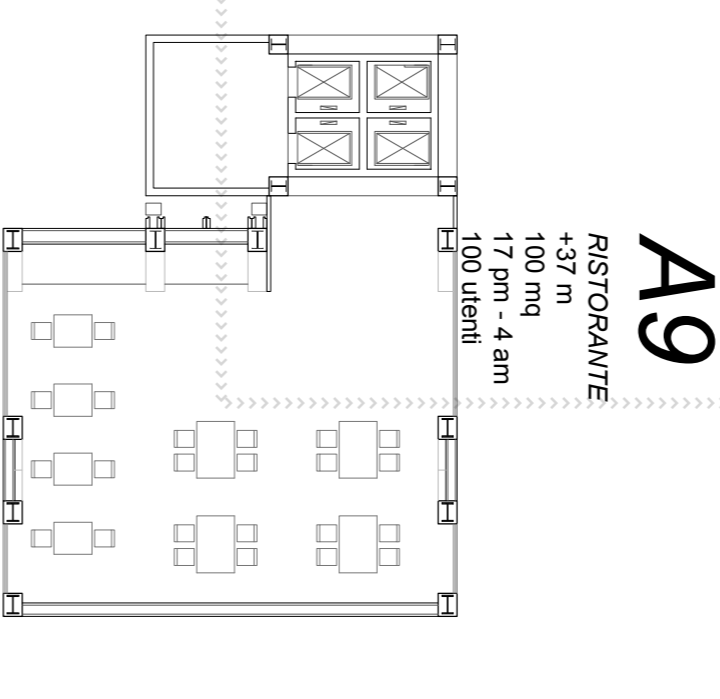
A6
BAR
+26,5 m
115 mq
9 am - 2 pm
40 turisti



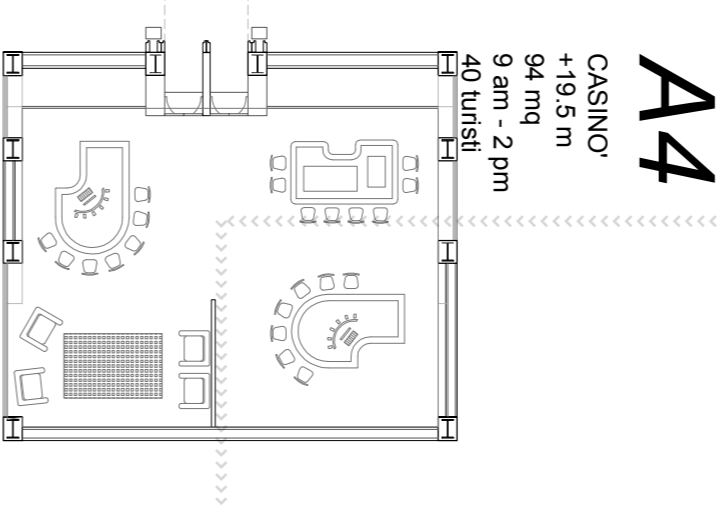
A8
CASINO
+33,5 m
140 mq
17 pm - 4 am
100 utenti



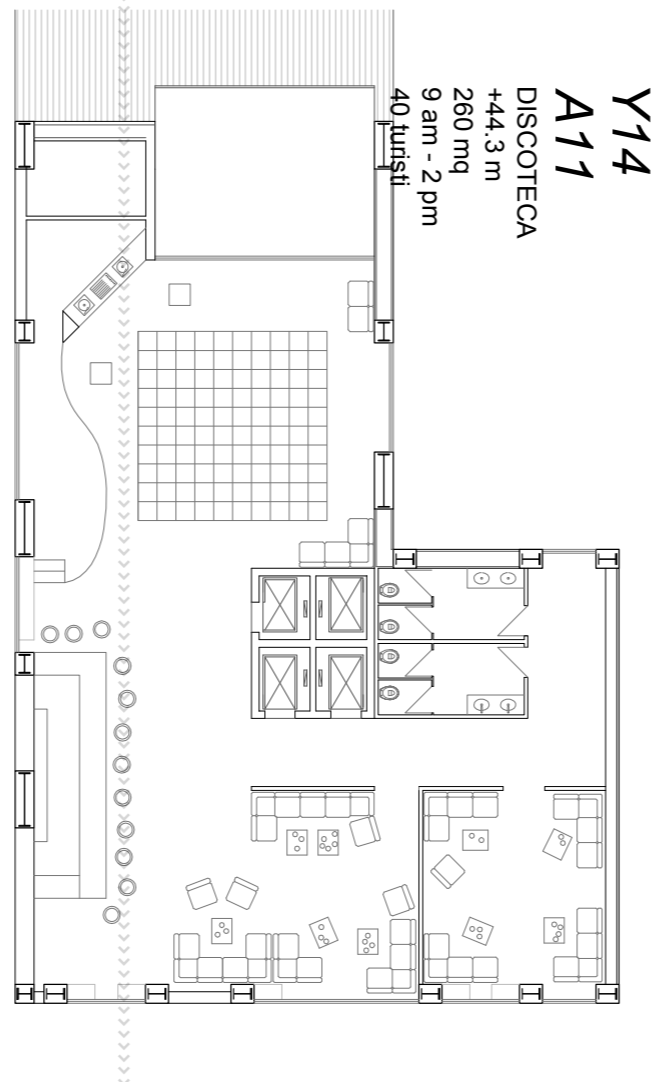
A5
BAR
+23 m
90 mq
9 am - 2 pm
40 turisti



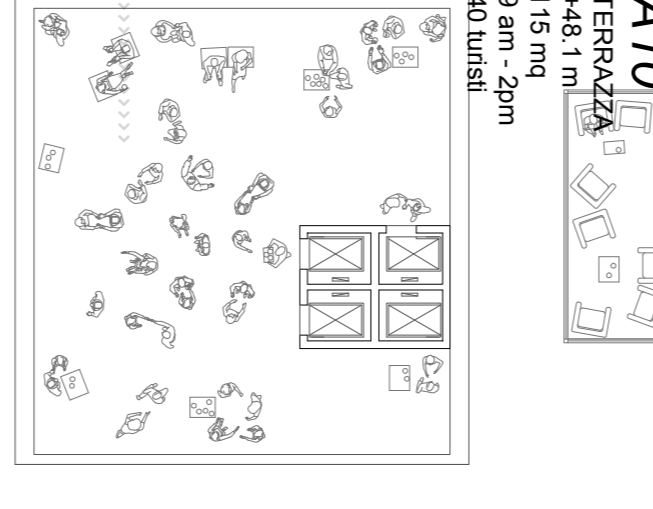
A9
RISTORANTE
+37 m
100 mq
17 pm - 4 am
100 utenti



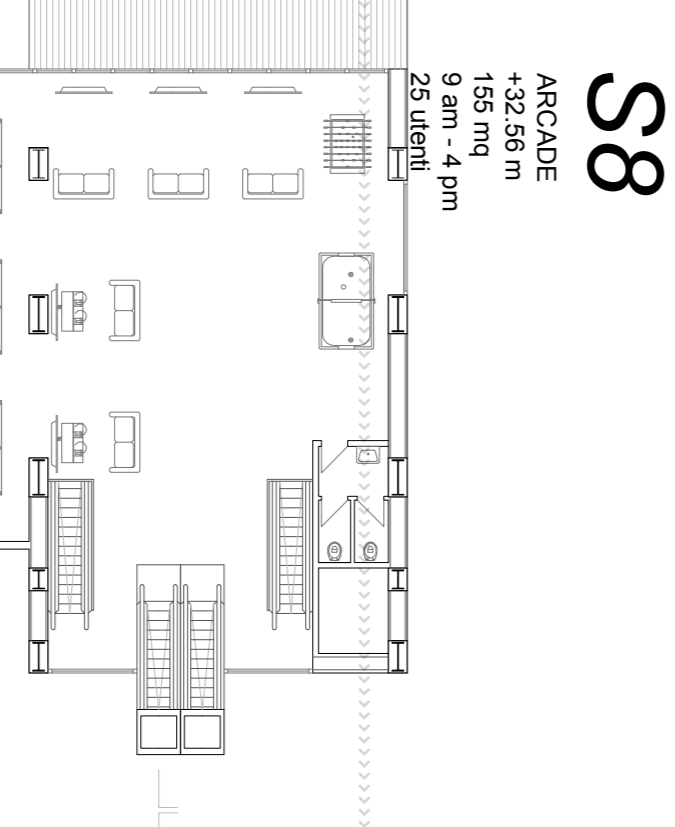
A4
CASINO
+19,5 m
94 mq
9 am - 2 pm
40 turisti



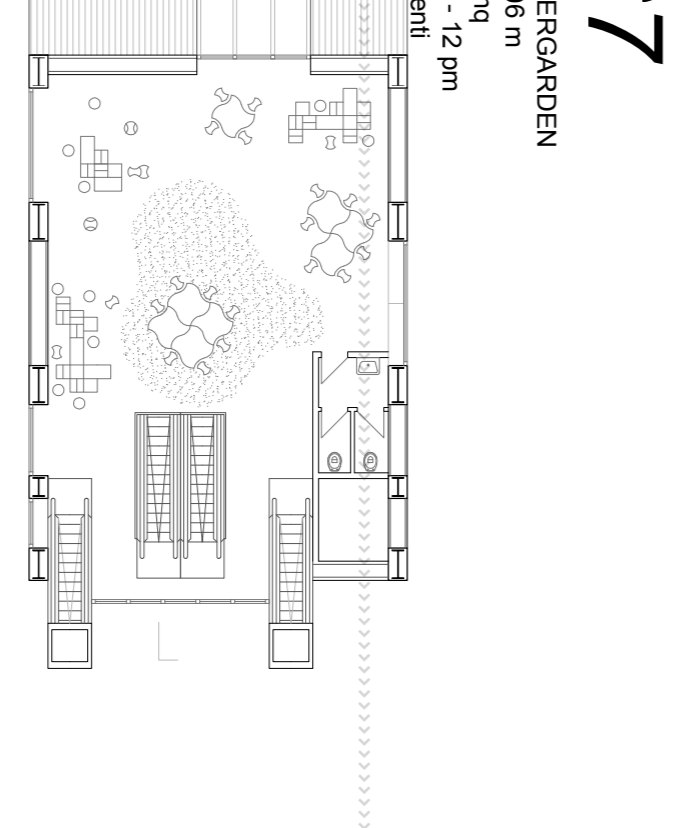
Y14
DISCOTECA
+44,3 m
280 mq
9 am - 2 pm
40 turisti



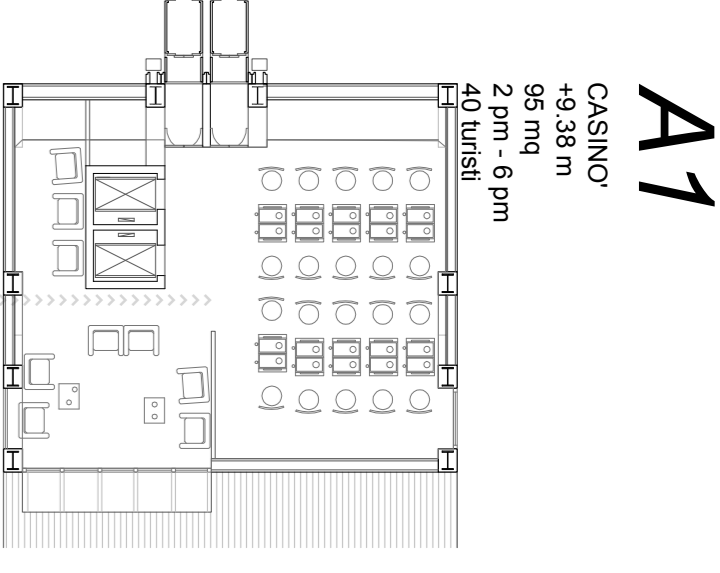
Y15
TERRAZZA
+48,1 m
115 mq
9 am - 2 pm
40 turisti



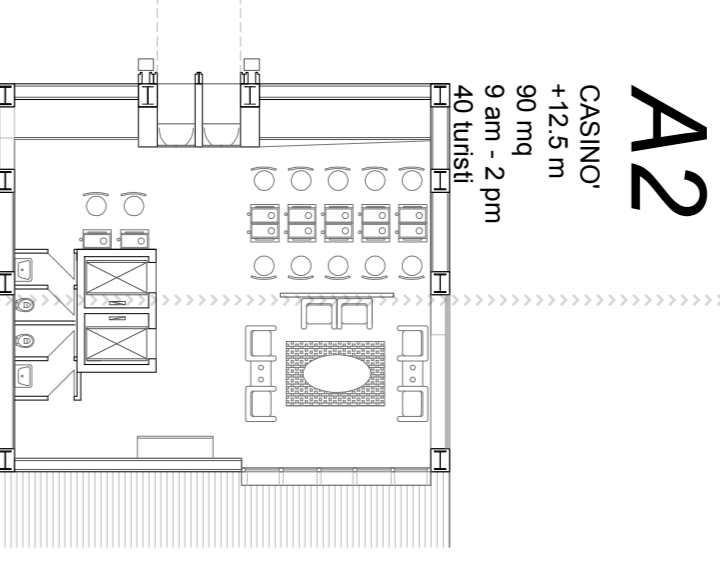
S8
ARCADE
+32,56 m
155 mq
9 am - 4 pm
23 utenti



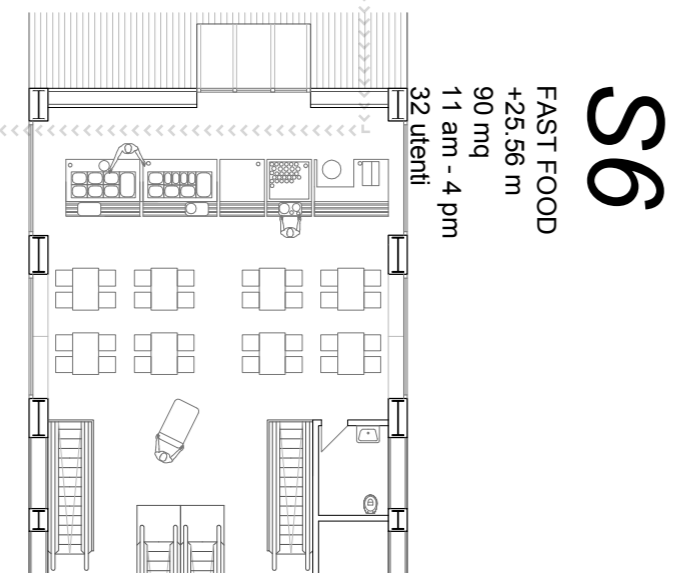
S7
KINDERGARTEN
+29,06 m
103 mq
11 am - 4 pm
20 utenti



A2
CASINO
+12,5 m
90 mq
9 am - 2 pm
40 turisti



A3
CASINO
+16 m
113 mq
9 am - 2 pm
40 turisti



S6
FAST FOOD
+25,56 m
90 mq
11 am - 4 pm
20 utenti

