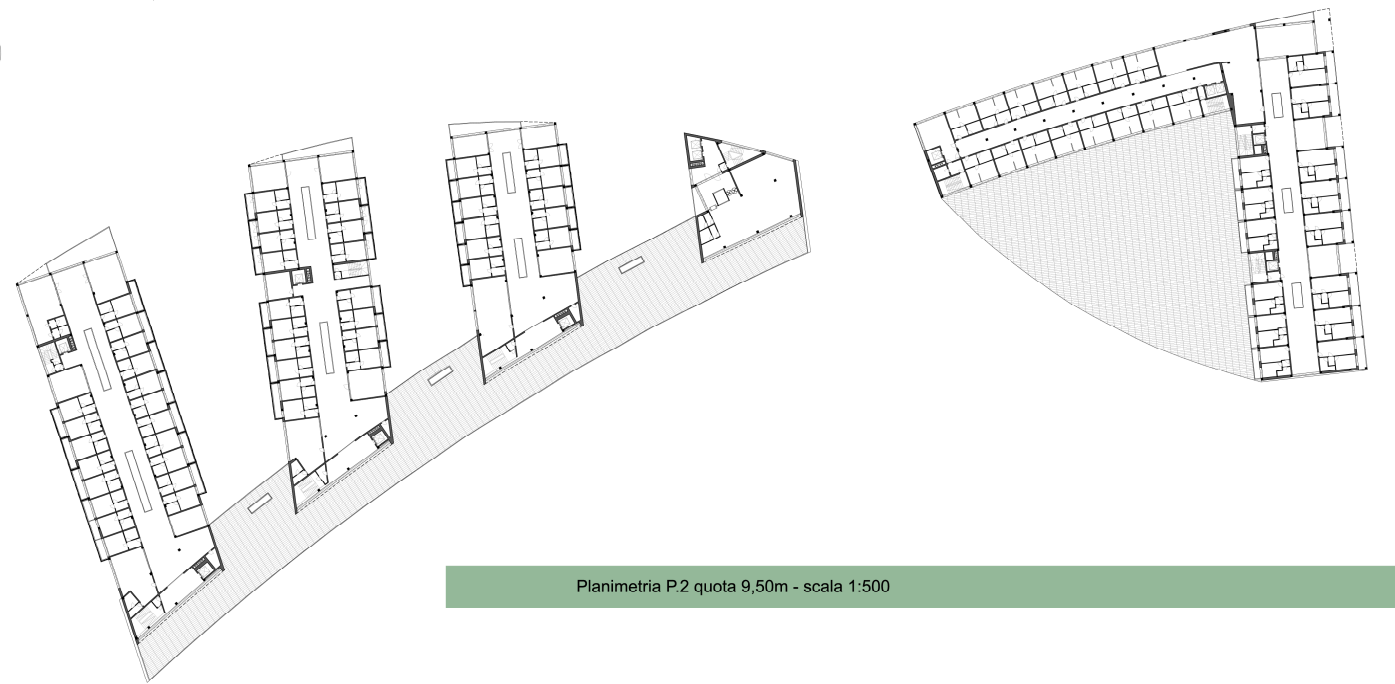




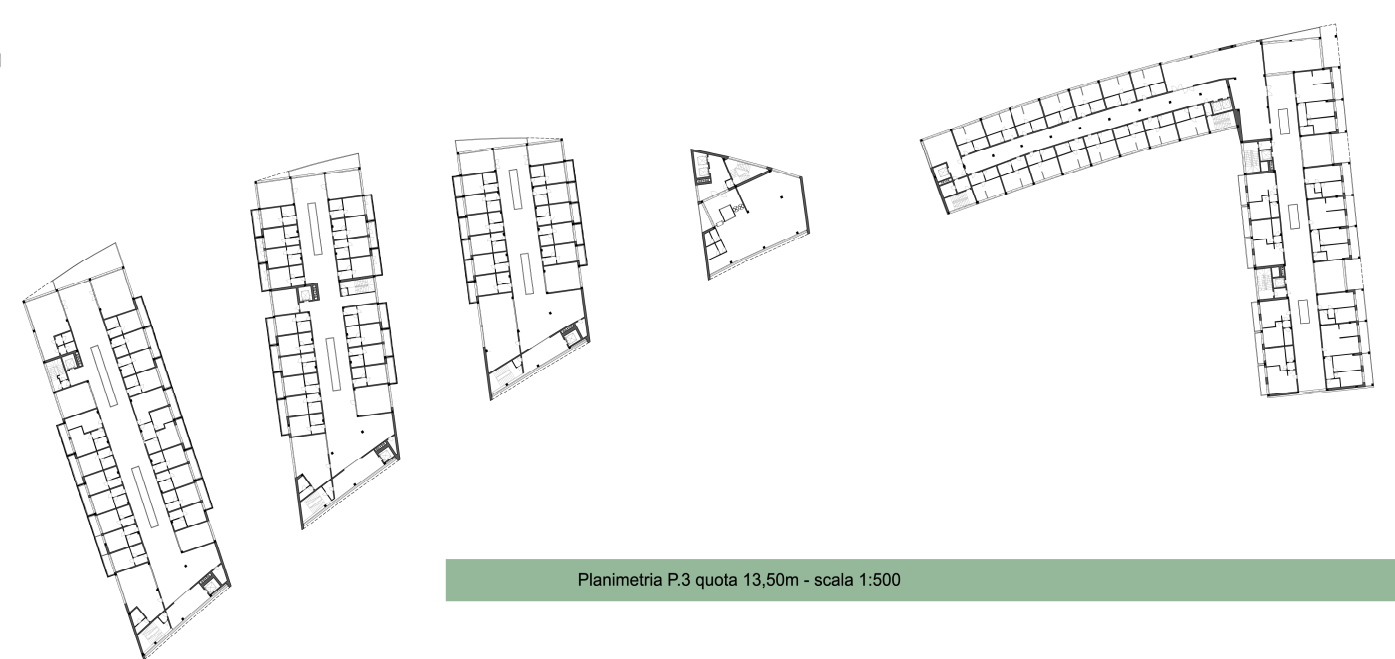
Planimetria P.T. quota 3,50m - scala 1:500 e viste tridimensionali delle Residenze



Planimetria P.1 quota 5,50m - scala 1:500



Planimetria P.2 quota 9,50m - scala 1:500



Planimetria P.3 quota 13,50m - scala 1:500



PROSPETTO NORD - RESIDENZA 1 - scala 1:200

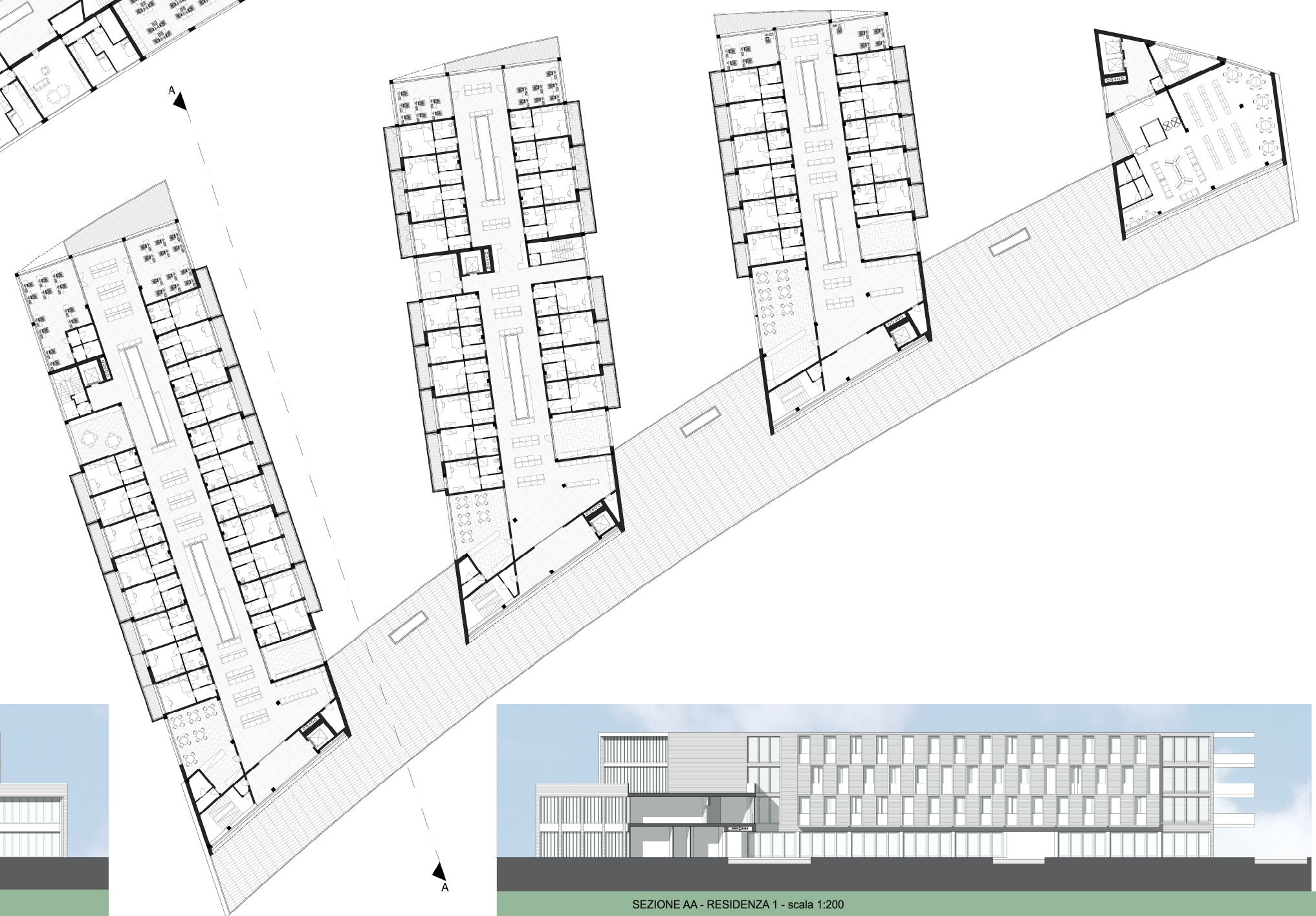
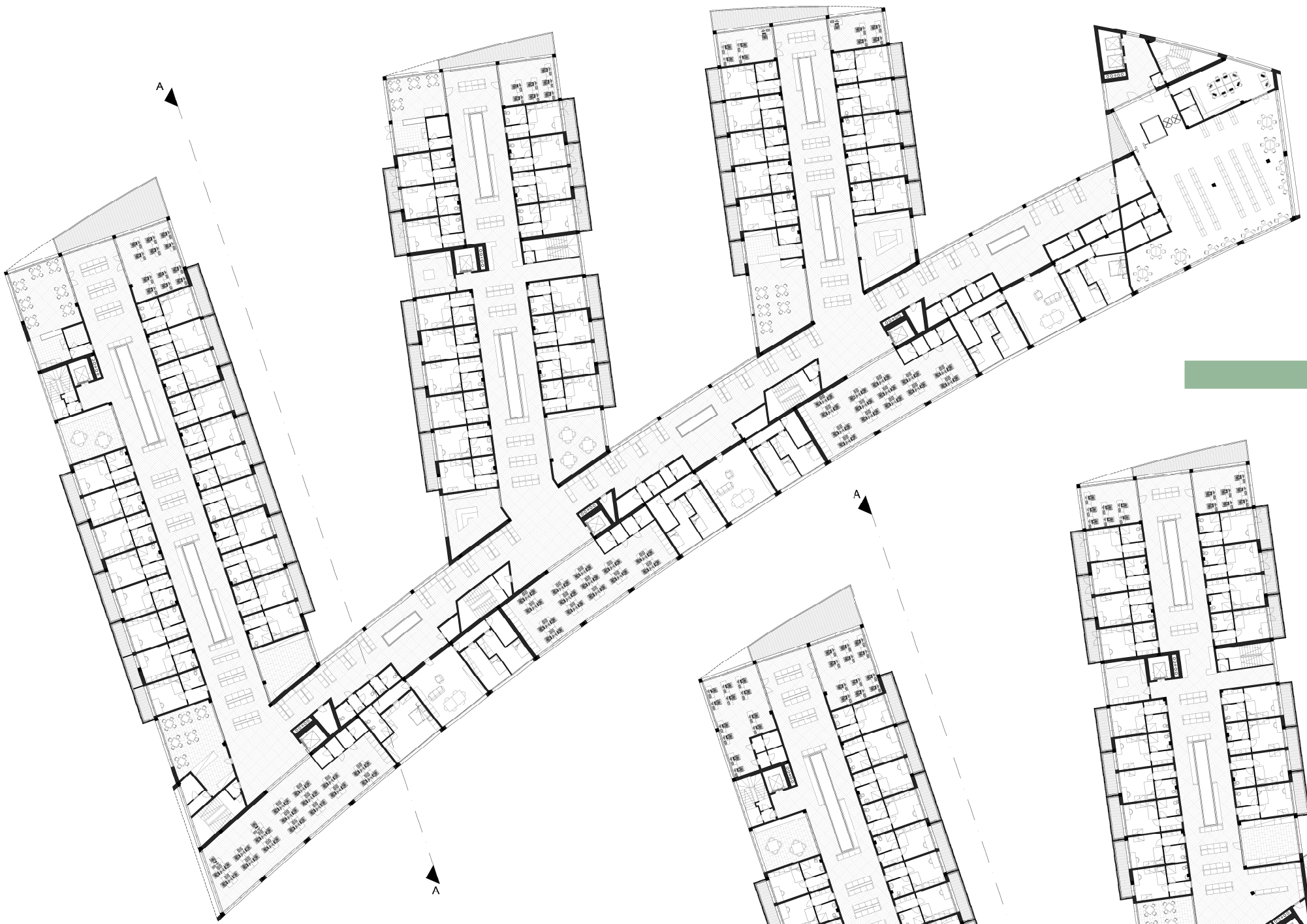


PLANIMETRIA PIANO TERRA - RESIDENZA 1 - scala 1:200



PROSPETTO SUD - RESIDENZA 1 - scala 1:200



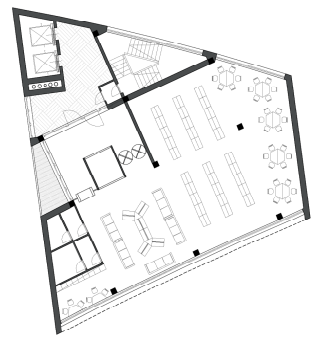


PROSPETTO OVEST - RESIDENZA 1 - scala 1:200



SEZIONE AA - RESIDENZA 1 - scala 1:200





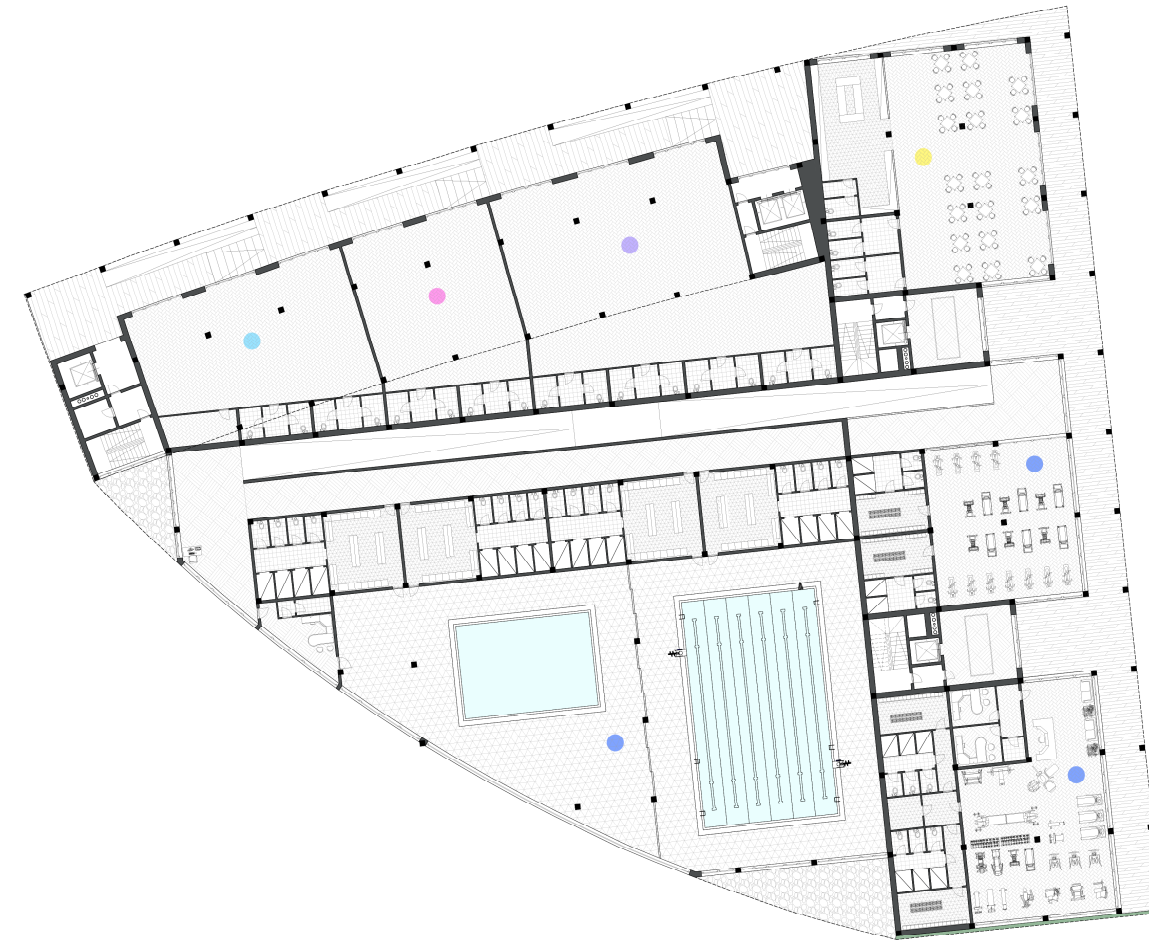
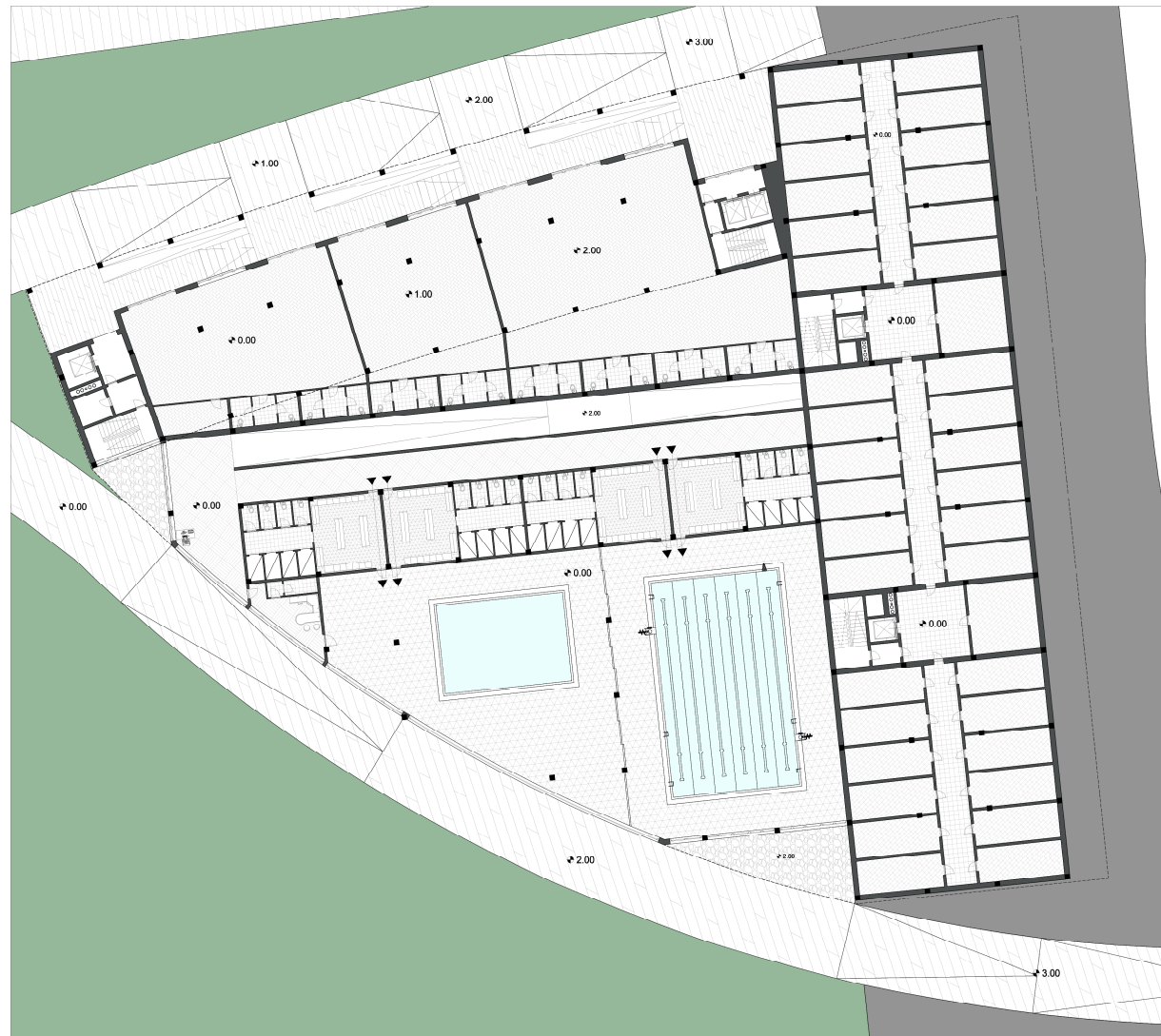
PLANIMETRIA PIANO INTERRATO - RESIDENZA A - scala 1:200



SEZIONE BB - RESIDENZA A - scala 1:200



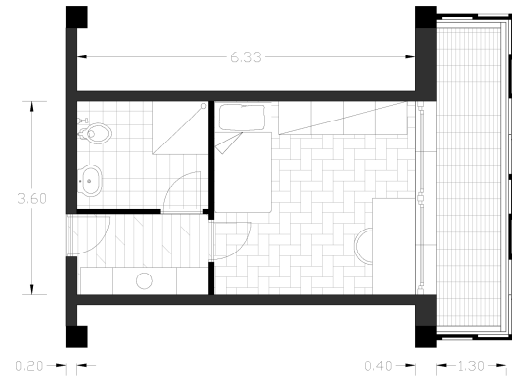
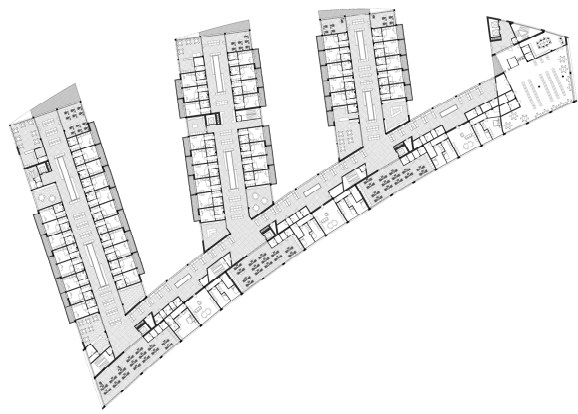
PROSPETTO EST - RESIDENZA A - scala 1:200



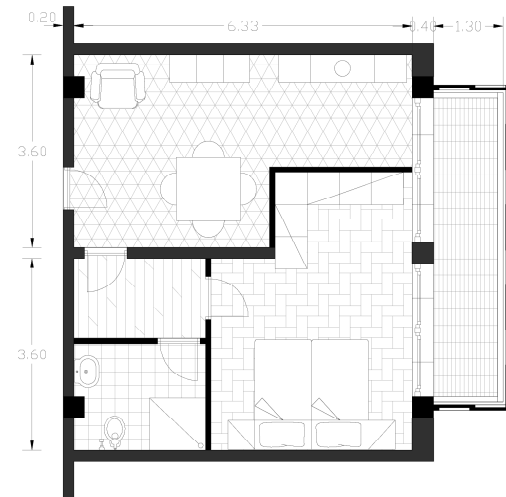
LEGENDA DELLE FUNZIONI

- Mensa / Ristorante della residenza per studenti
- Negozi di abbigliamento, accessori e articoli vari
- Negozi di tecnologia / Internet Point e Wifi / Telefonia
- Area studio
- Pub / Bar / Caffetteria / Spazio palco per concerti
- Lavanderia
- Copisteria / Cartoleria / Gadget
- Palestra e Piscina Coperta

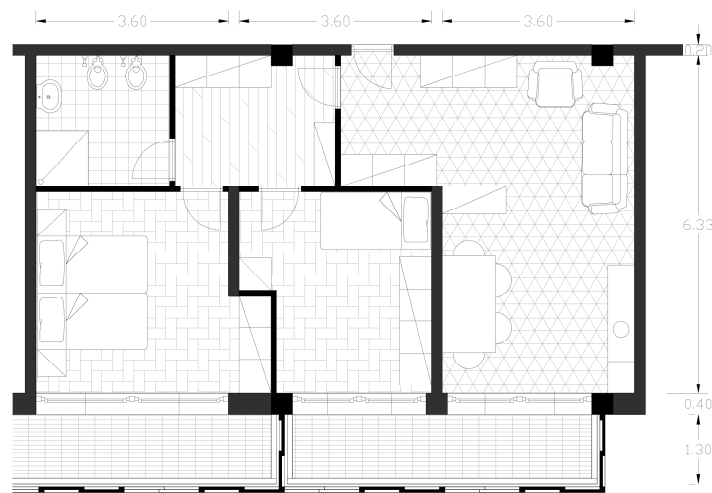




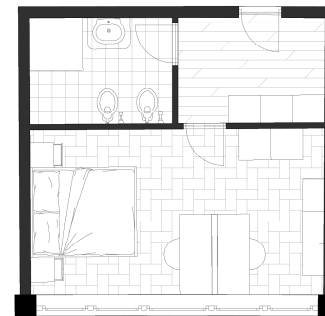
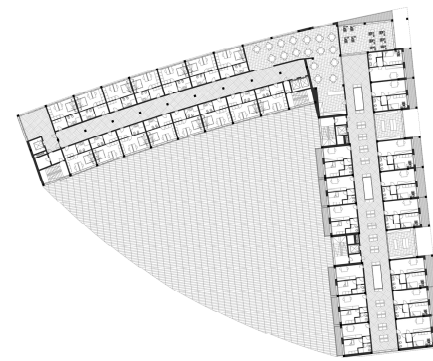
Modulo Alloggio Mono
Residenza per Housing-Studenti, Cellula Abitativa e Aggregazioni
scala 1:50, SLP netta 18 mq



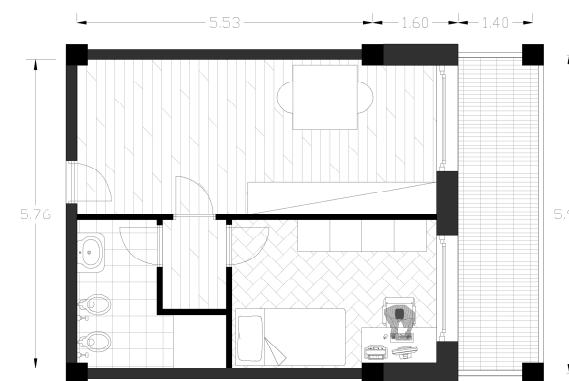
Modulo Alloggio Doppia
Residenza per Housing-Studenti, Cellula Abitativa e Aggregazioni
scala 1:50, SLP netta 36 mq



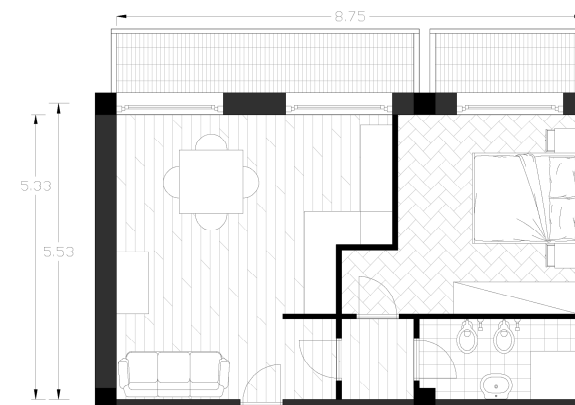
Modulo Alloggio Triple o Familiare
Residenza per Housing-Studenti, Cellula Abitativa e Aggregazioni
scala 1:50, SLP netta 54 mq



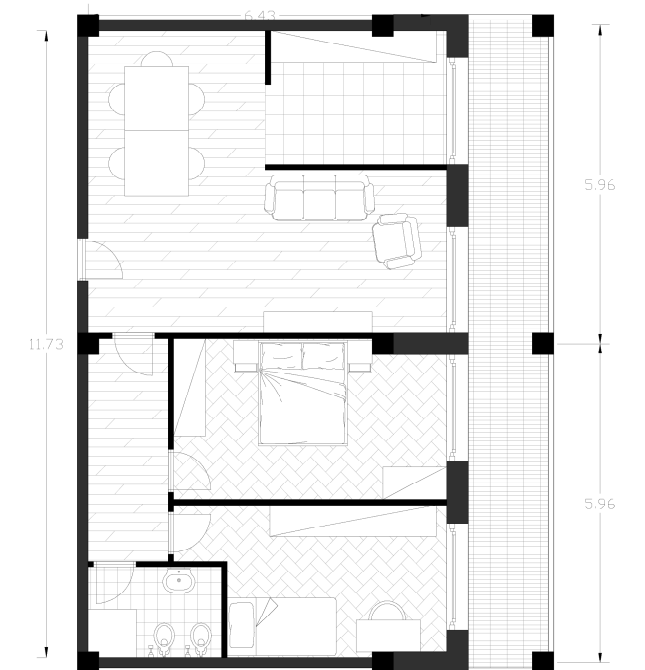
Modulo Alloggio Mono e Doppia
Residenza per Housing-Studenti, Cellula Abitativa e Aggregazioni
scala 1:50, SLP netta 25 mq



Modulo Alloggio Mono
Residenza per Docenti, Residenza Libera
scala 1:50, SLP netta 28 mq



Modulo Alloggio Doppia
Residenza per Docenti, Residenza Libera
scala 1:50, SLP netta 45 mq



Modulo Tripla - Alloggio Familiare
Residenza per Housing-Studenti, Docenti, Residenza Libera
scala 1:50, SLP netta 54 mq



PIANO TERRA - Servizi per Campus e Città - scala 1:500



VISTA N-O



PIANO QUARTO (16,00m) - Dirigenza, Auditorium e Uffici Amministrativi - scala 1:500



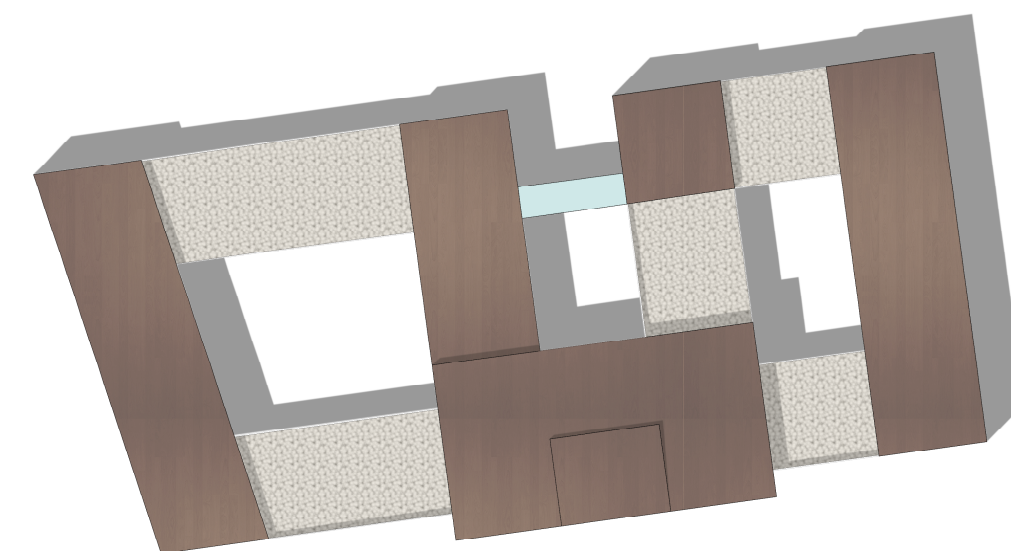
PIANO PRIMO (4,00m) - Amministrativo e Gestionale, Spin Off - Acceleratore d'Impresa - scala 1:500



PIANO QUINTO (20,00m) - Dirigenza, Auditorium e Uffici Amministrativi - scala 1:500



PIANO SECONDO (8,00m) E PIANO TERZO (12,00m) - Didattica e Sperimentazione, corsi studio, laboratori specifici - scala 1:500



PIANO COPERTURE (25,00m) - scala 1:500