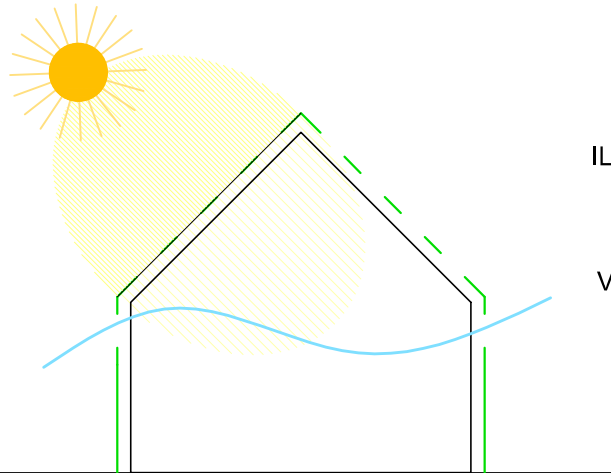


NUOVA SCUDERIA

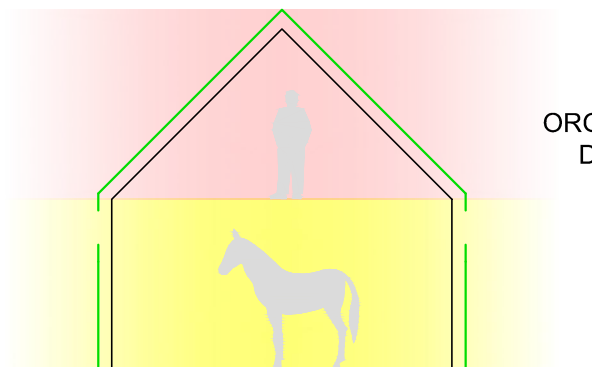


ECOCOMPATIBILITA'
E
SOSTENIBILITA'
AMBIENTALE

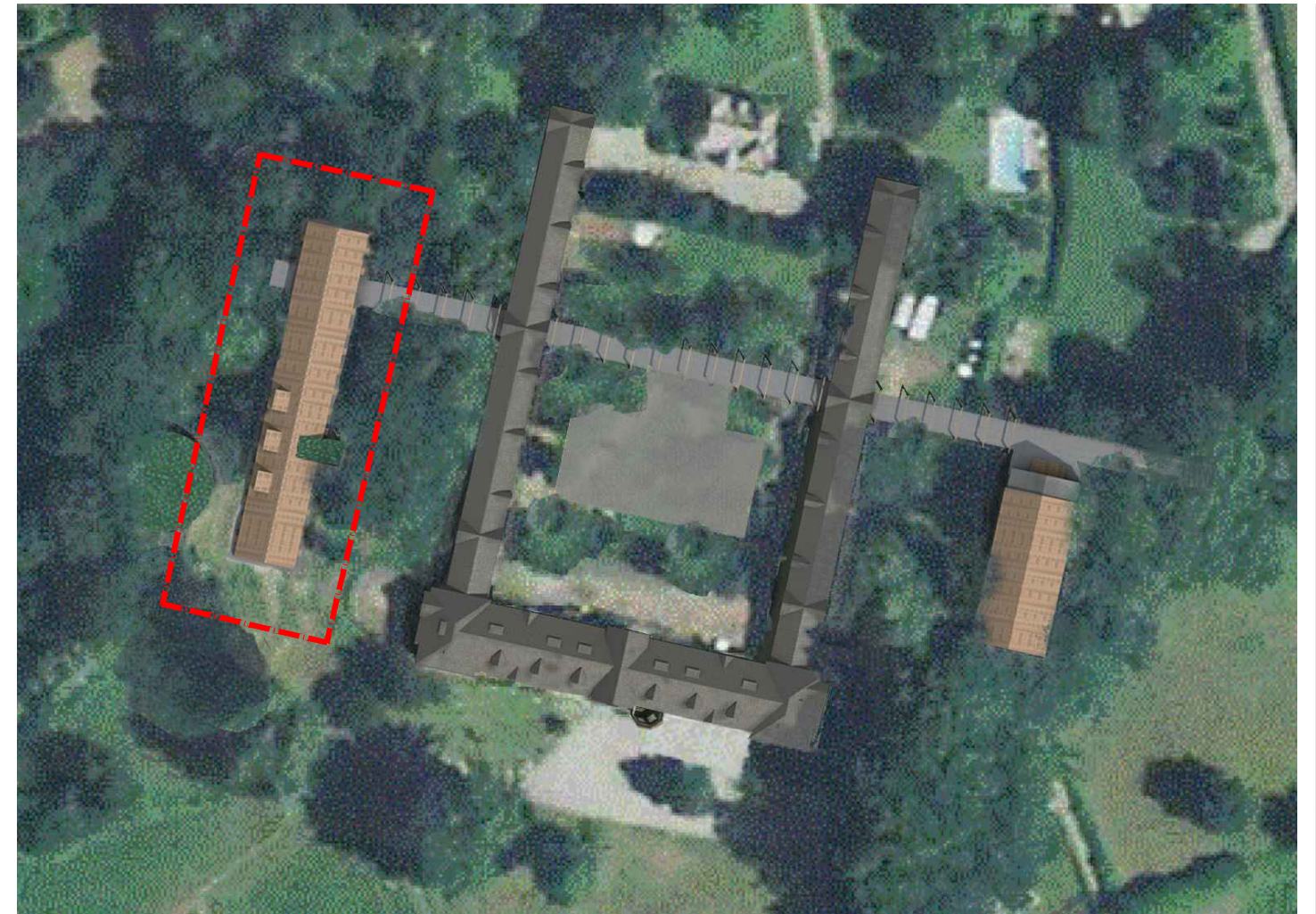


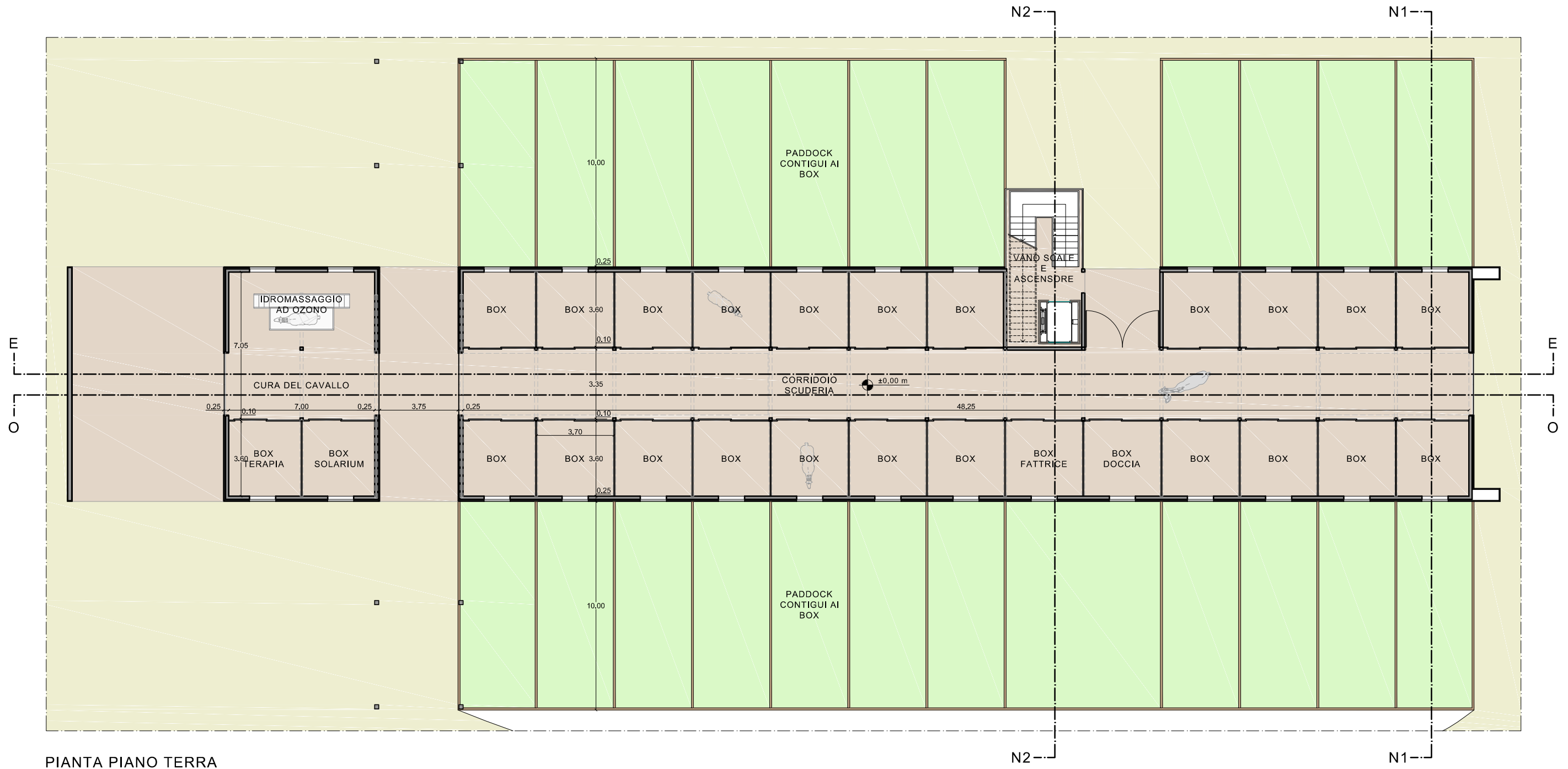
ILLUMINAZIONE
NATURALE

VENTILAZIONE
NATURALE



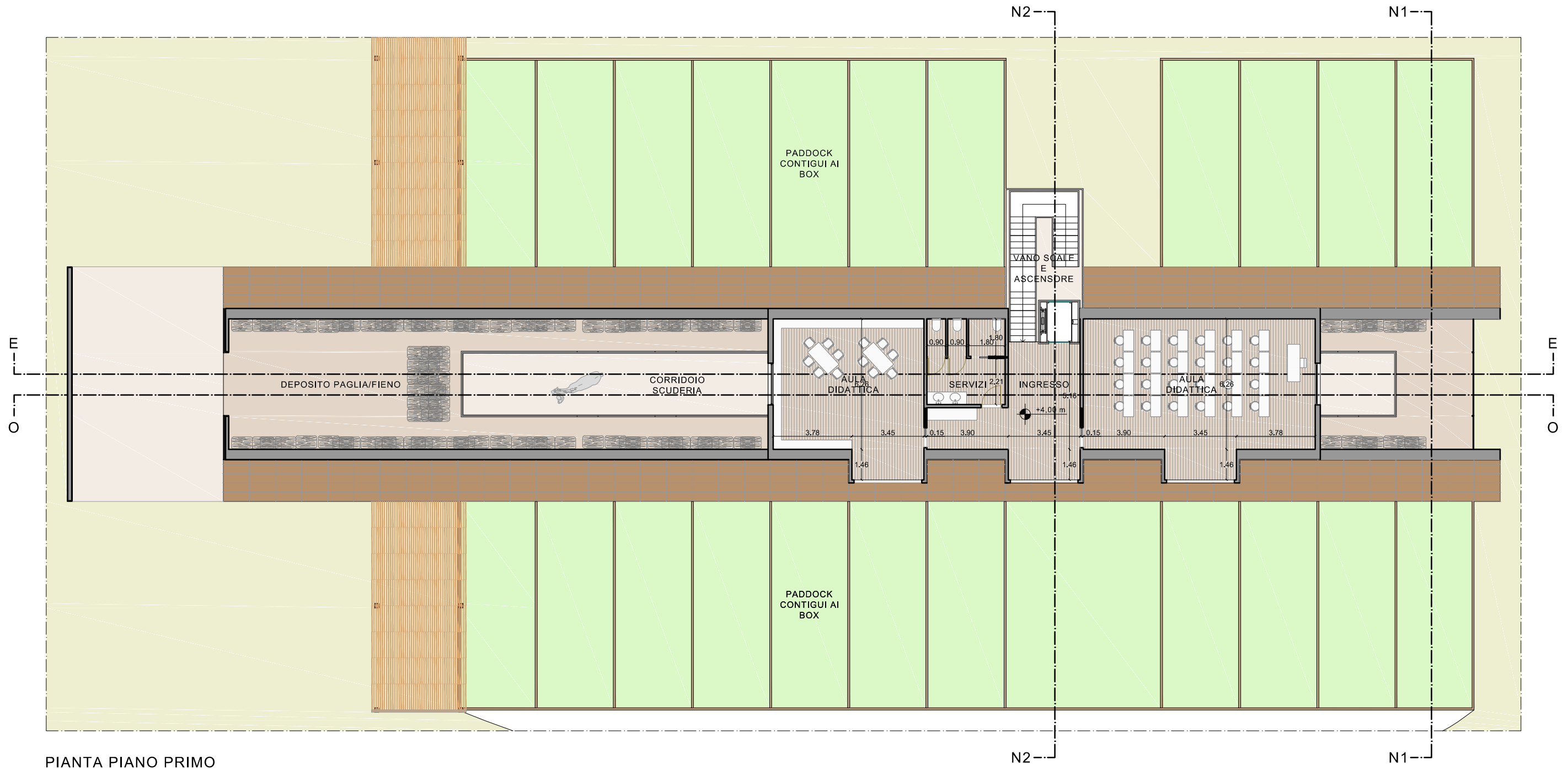
ORGANIZZAZIONE
DEGLI SPAZI





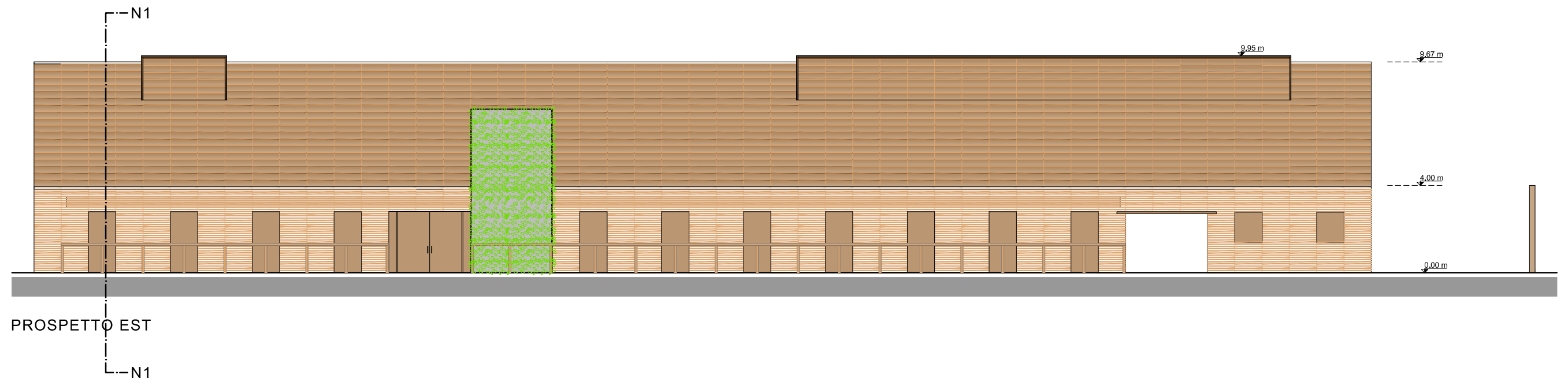
PIANTA PIANO TERRA



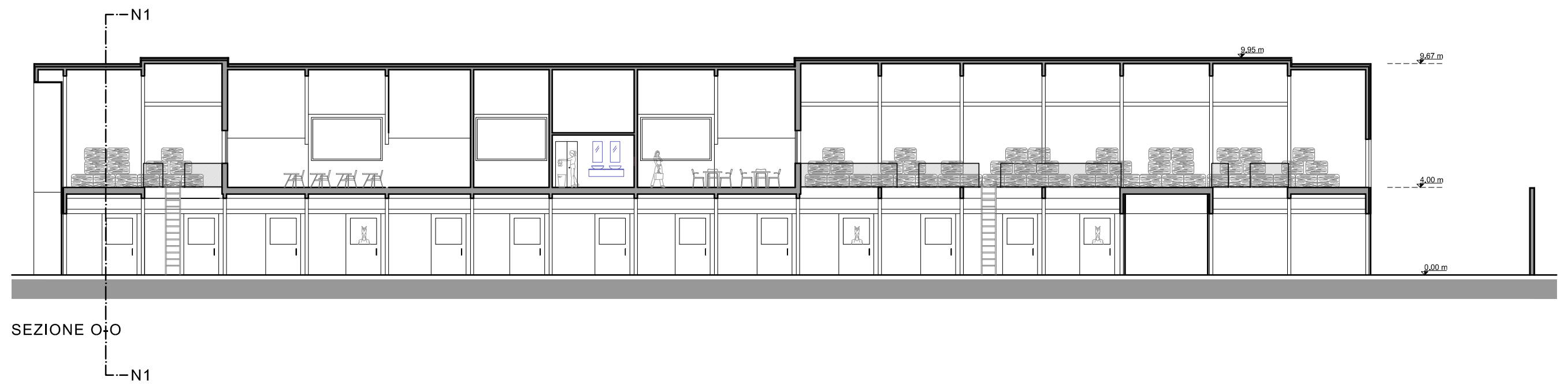


PIANTA PIANO PRIMO

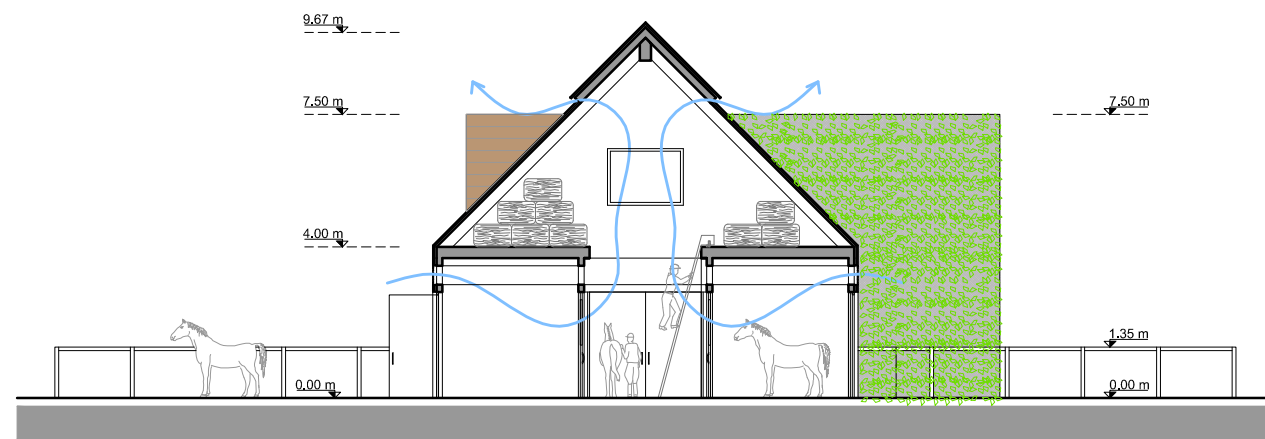




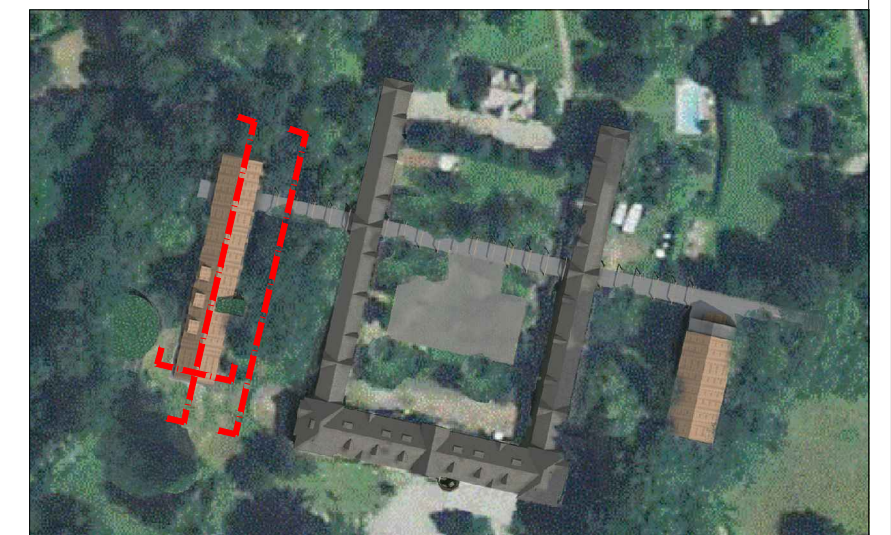
PROSPETTO EST



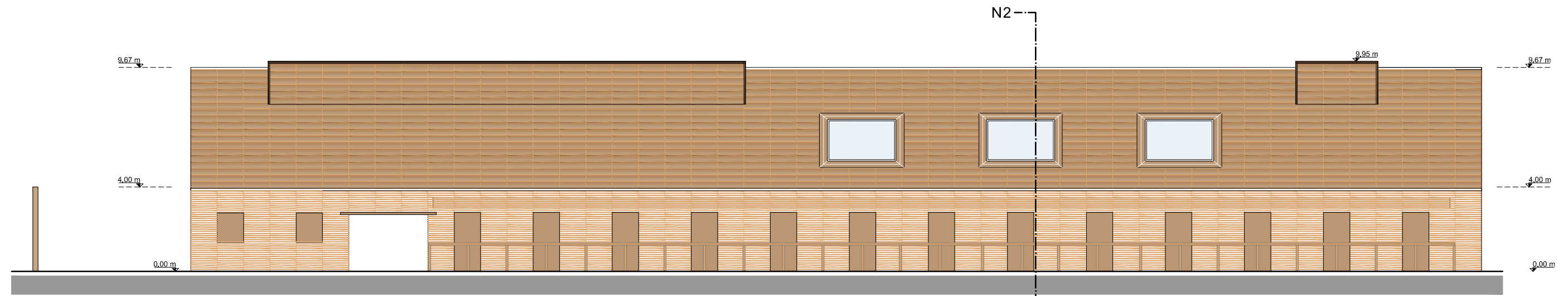
SEZIONE O-O



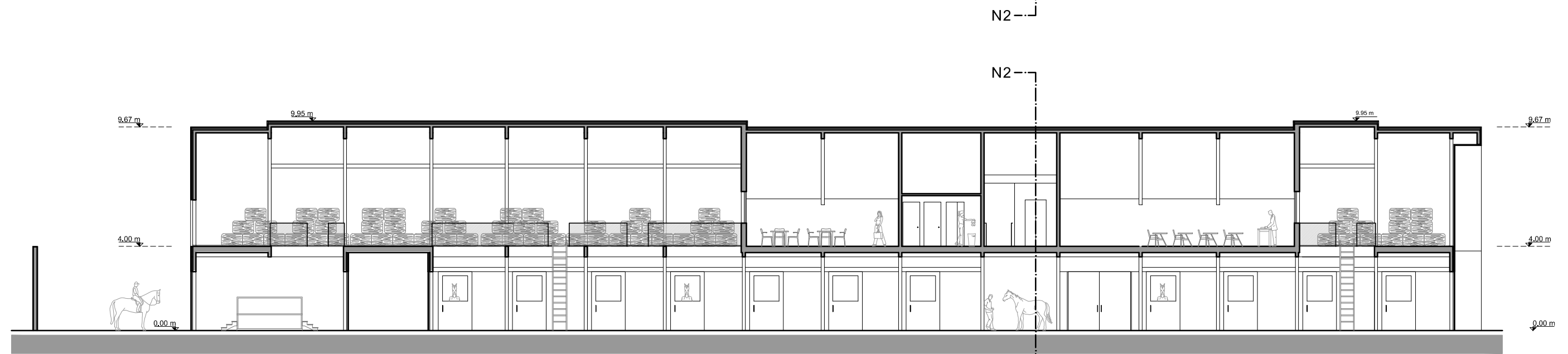
SEZIONE N1-N1



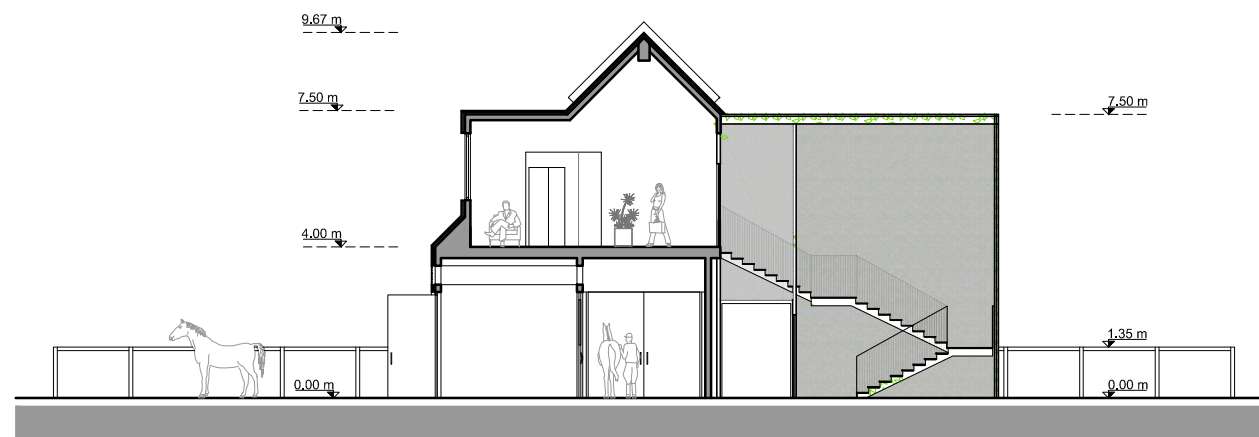
LOCALIZZAZIONE



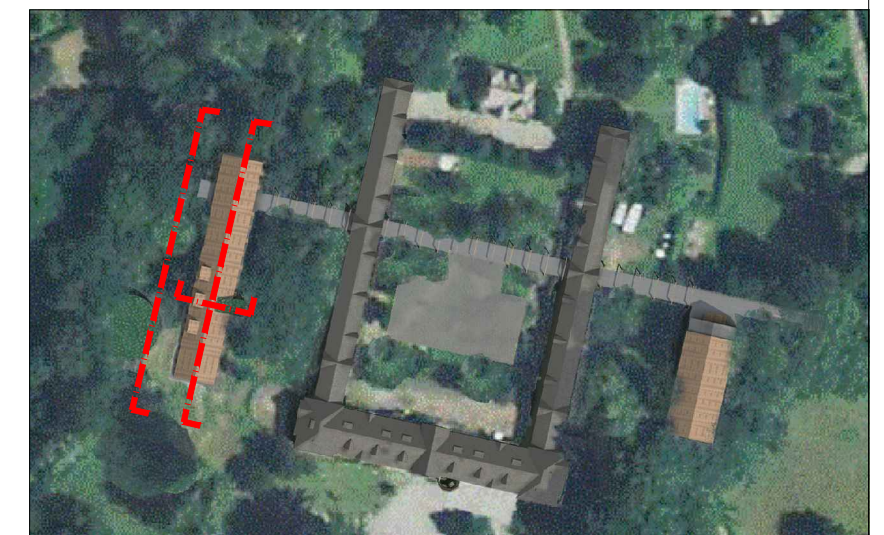
PROSPETTO OVEST



SEZIONE E-E



SEZIONE N2-N2



LOCALIZZAZIONE





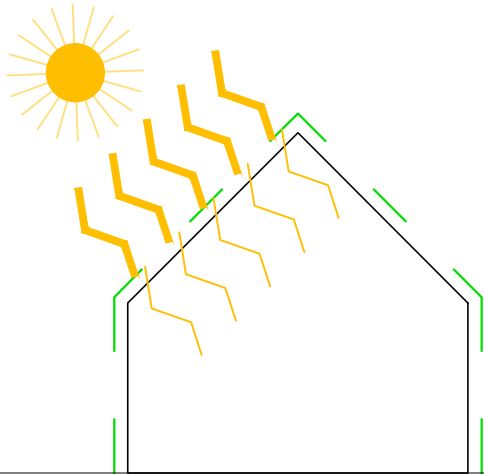




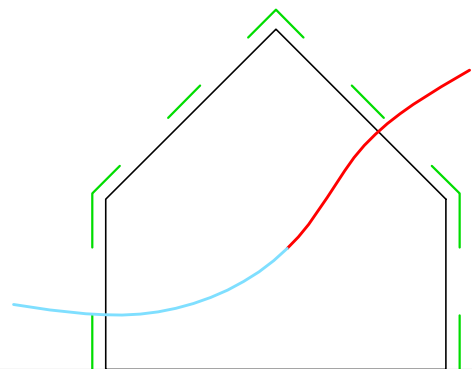
MANEGGIO COPERTO



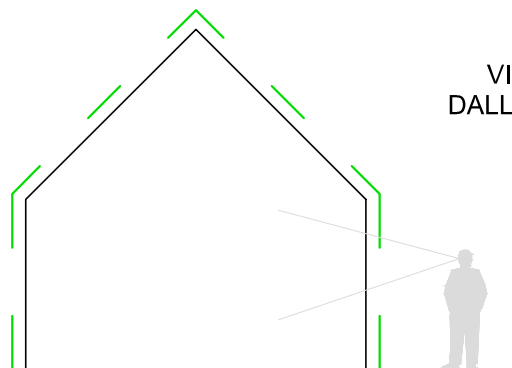
ECOCOMPATIBILITA'
E
SOSTENIBILITA'
AMBIENTALE



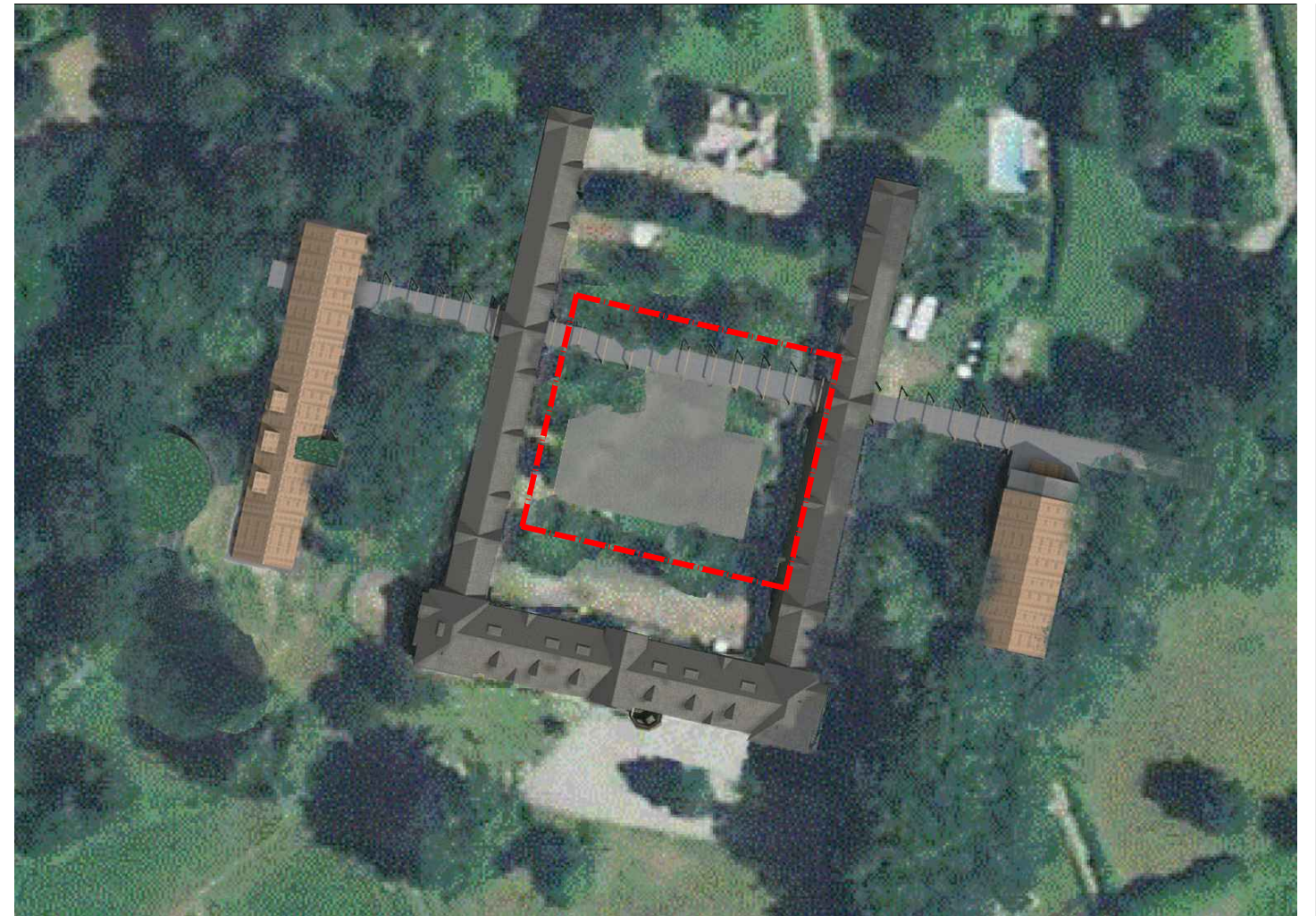
SCHERMATURA

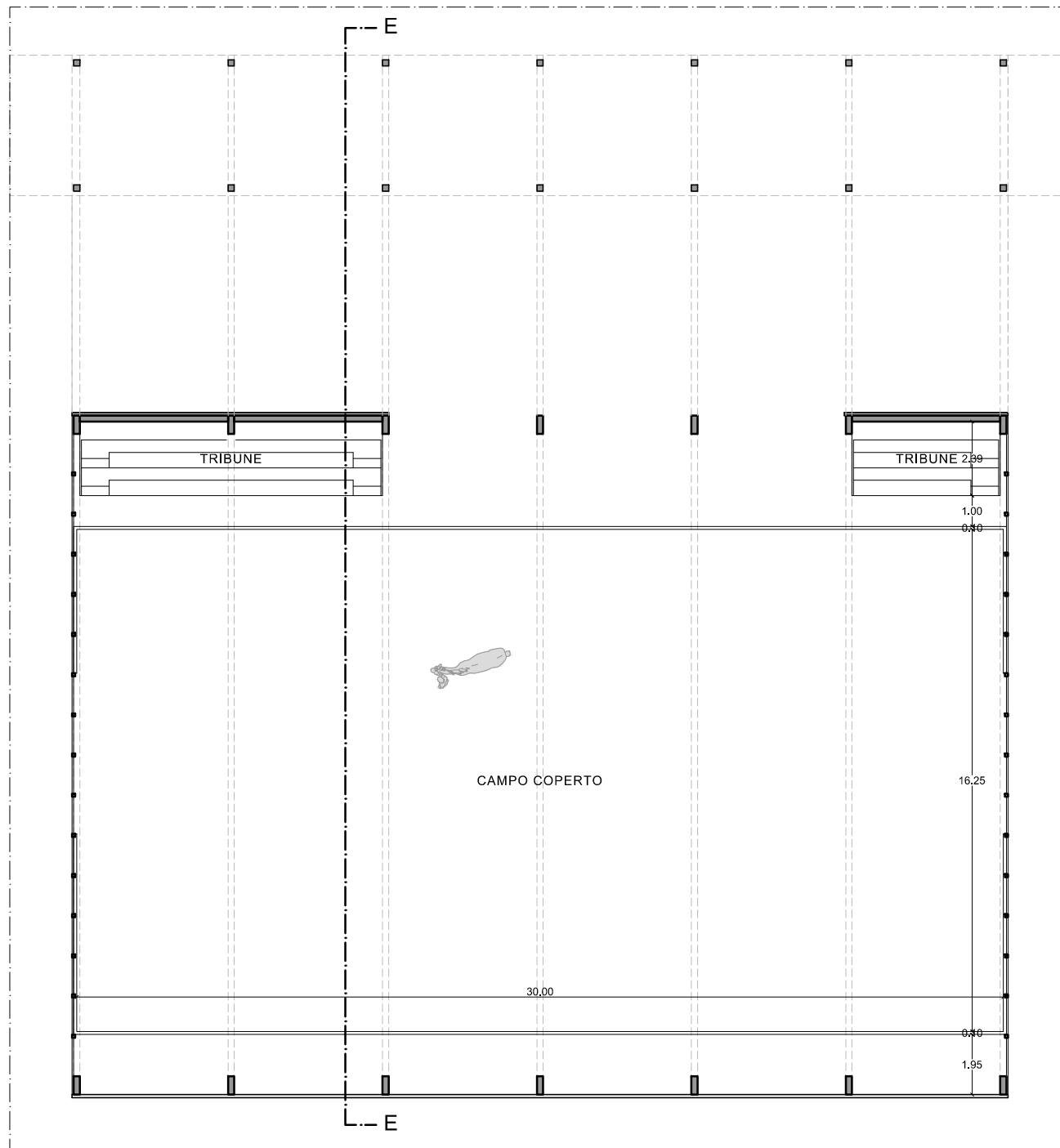


VENTILAZIONE
NATURALE

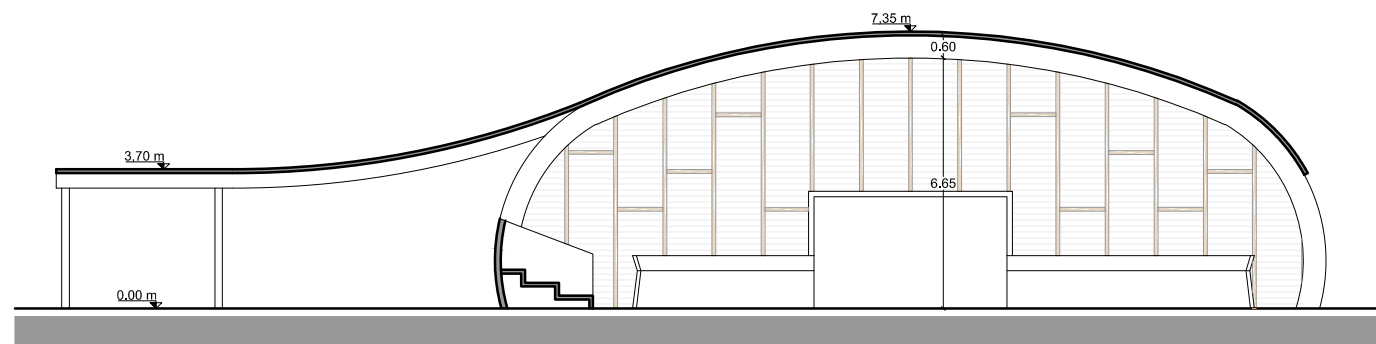


VISIBILITA'
DALL'ESTERNO

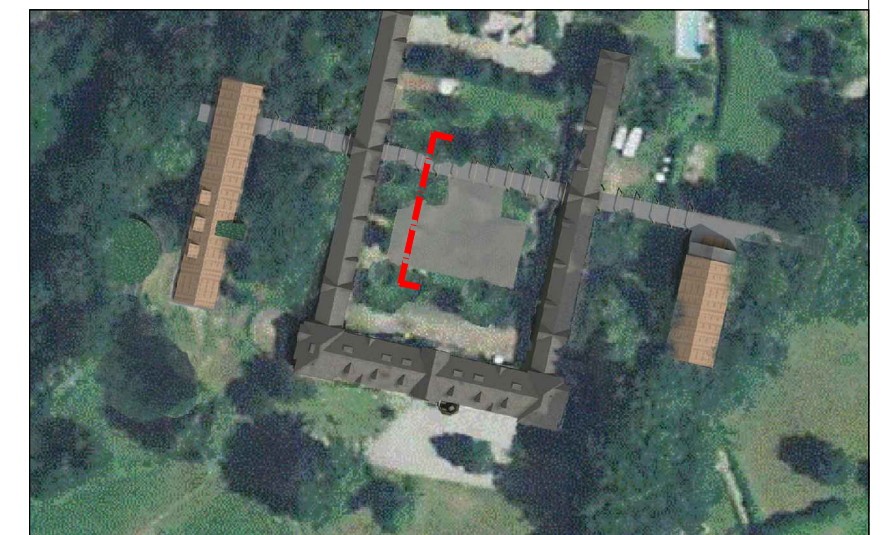
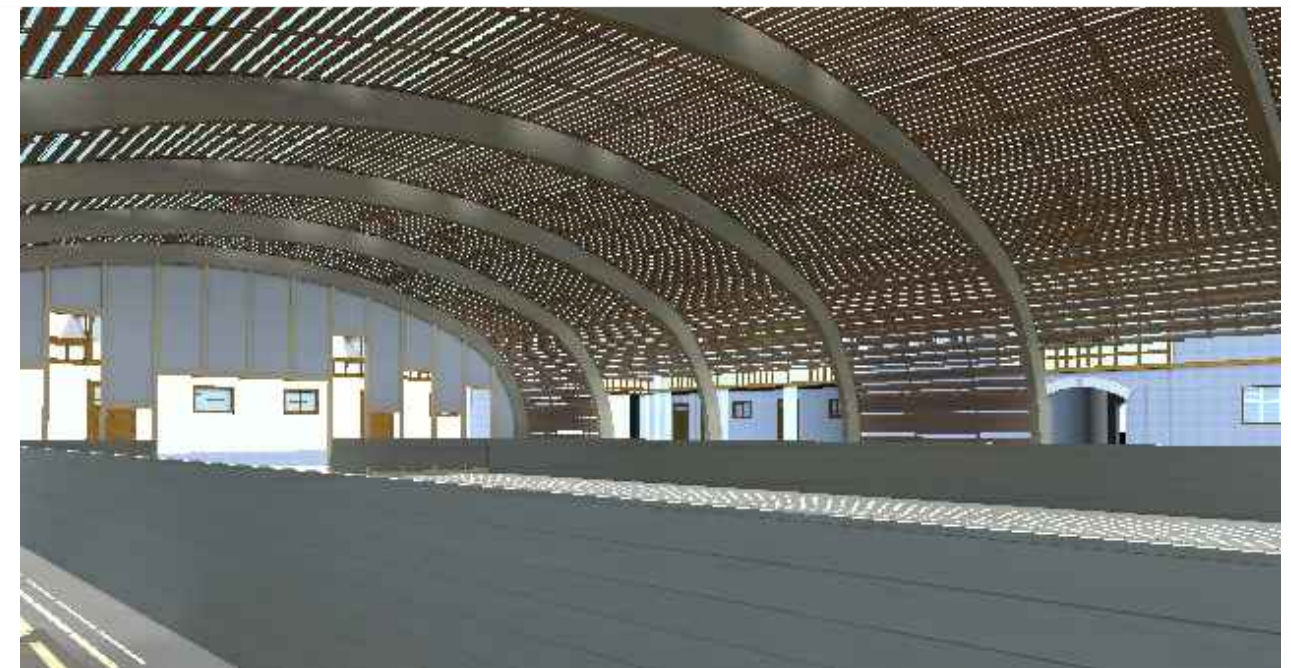




PIANTA PIANO TERRA

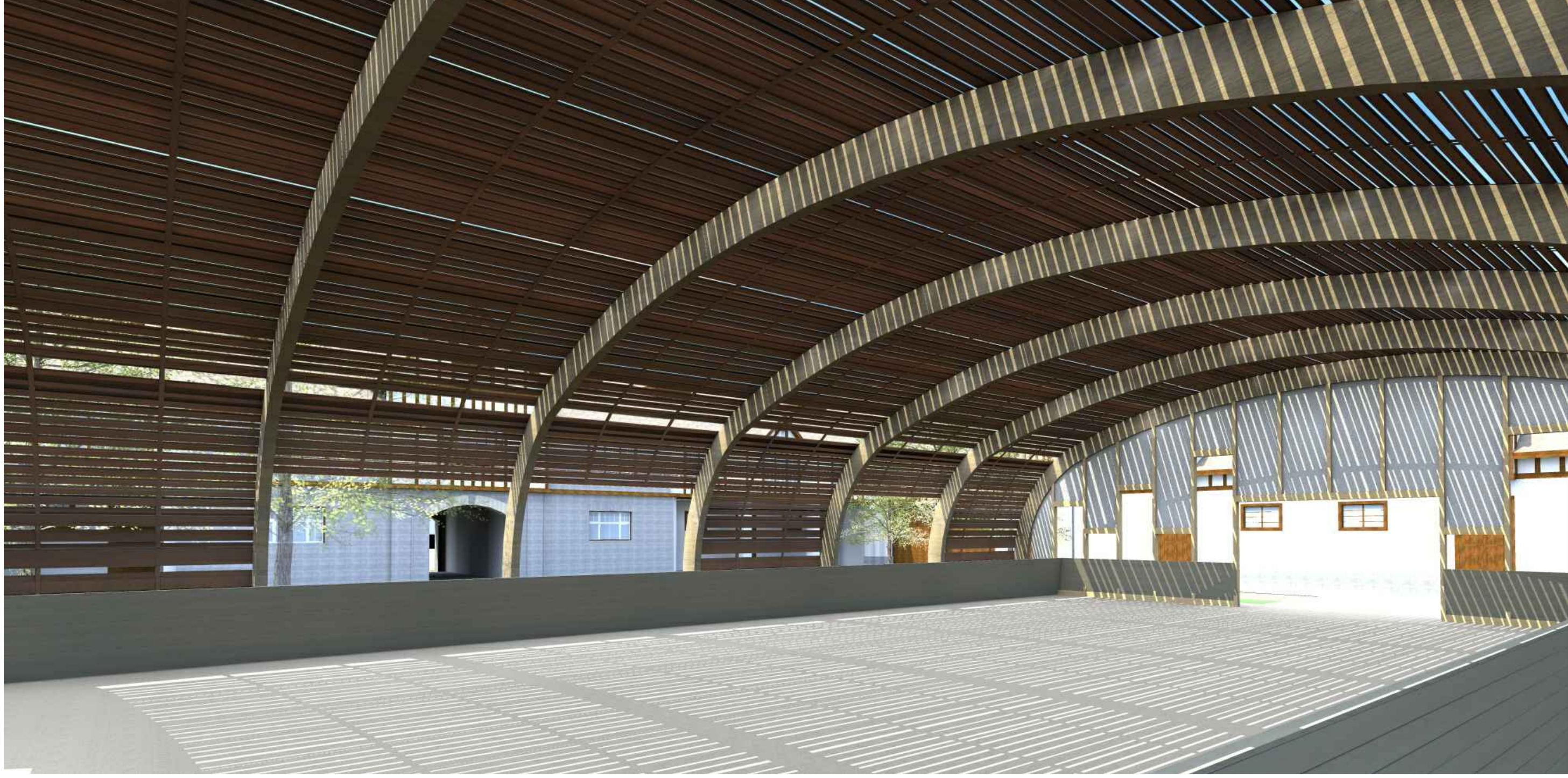


SEZIONE E-E

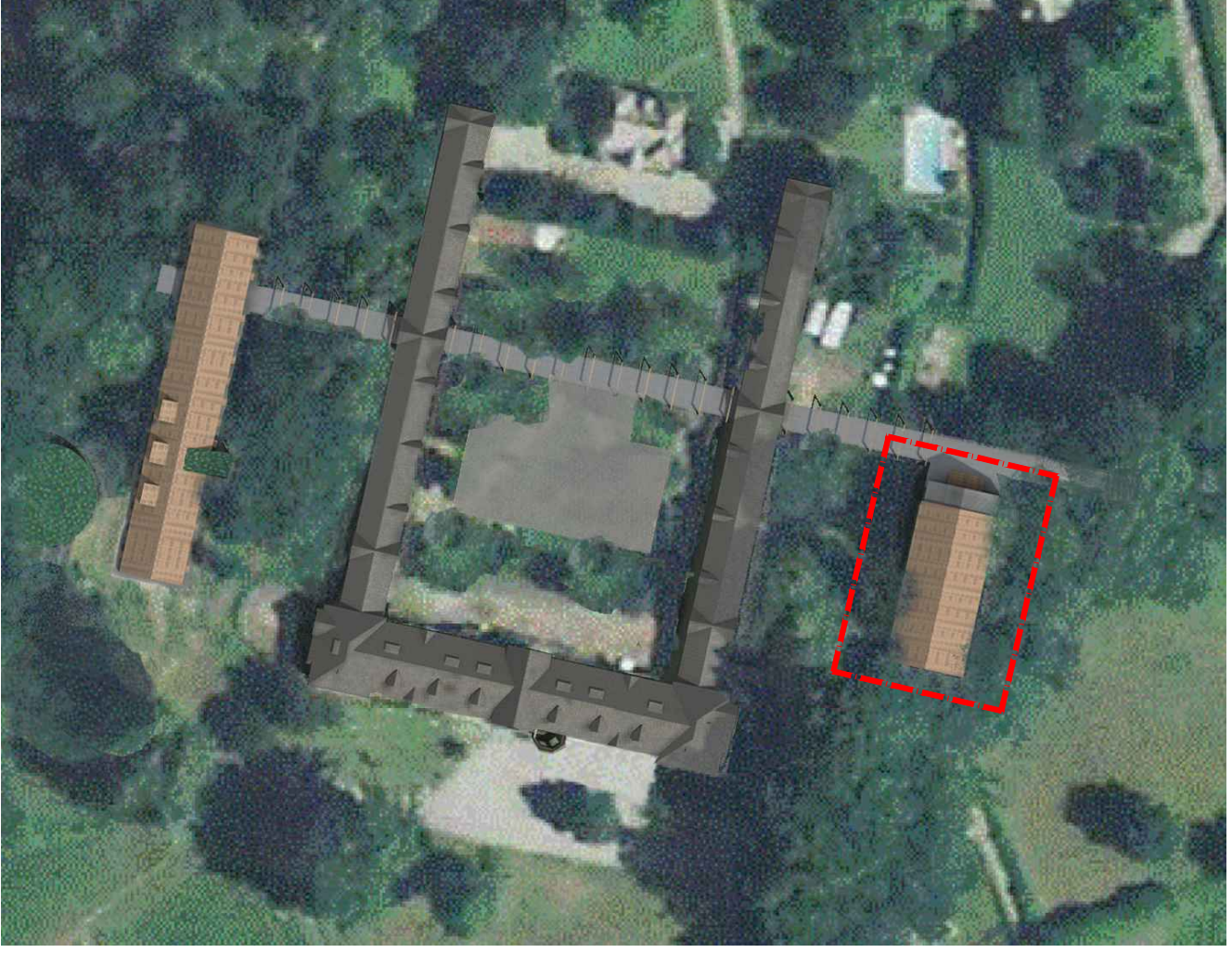


LOCALIZZAZIONE









TAV 65

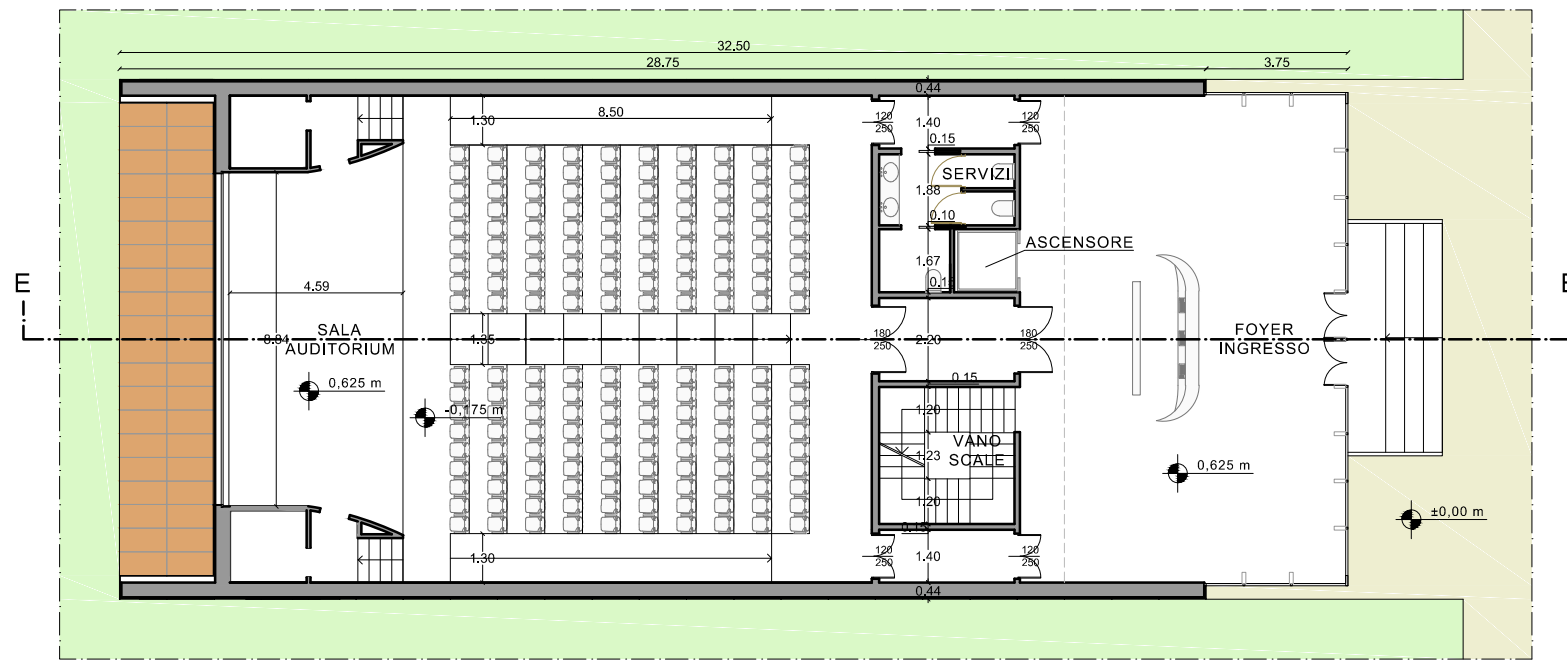
SCALA
--

INQUADRAMENTO

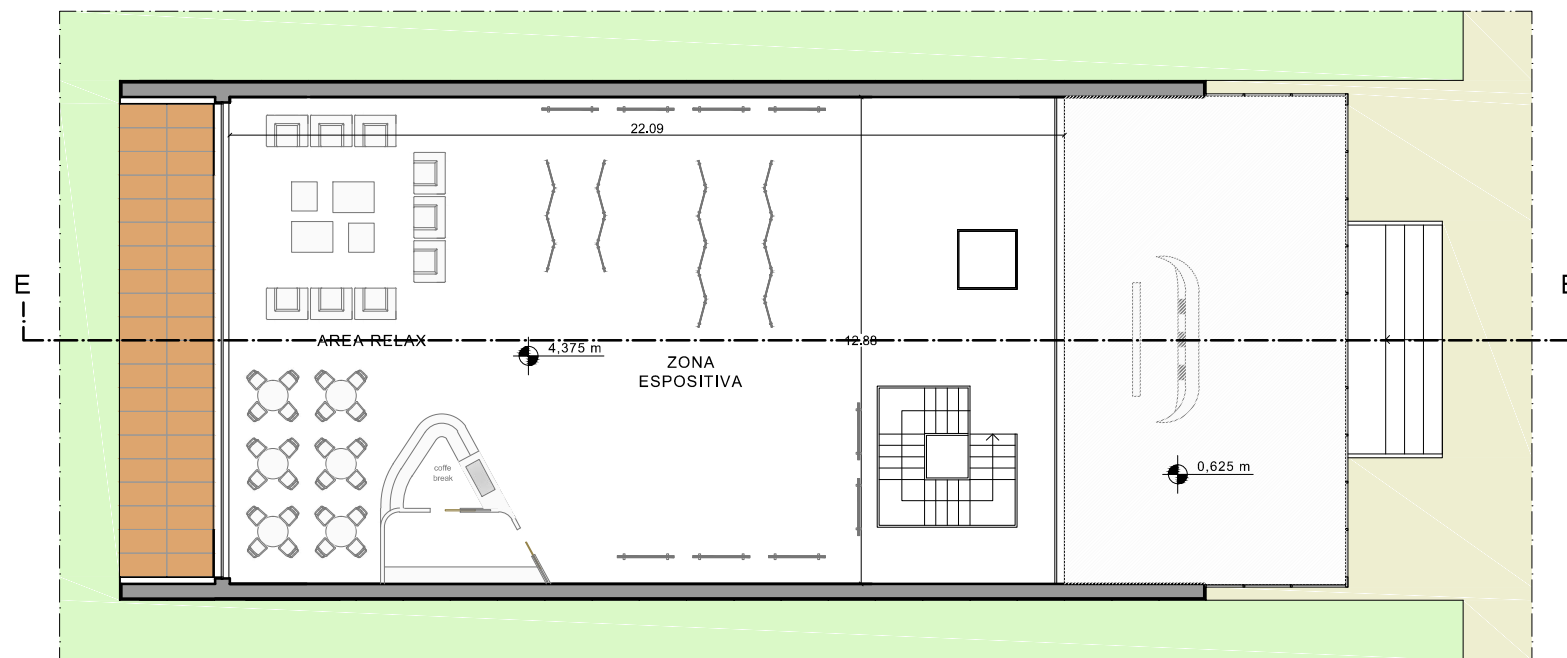
AUDITORIUM
E ZONA ESPOSITIVA

VILLA E SCUDERIE BOCCONI

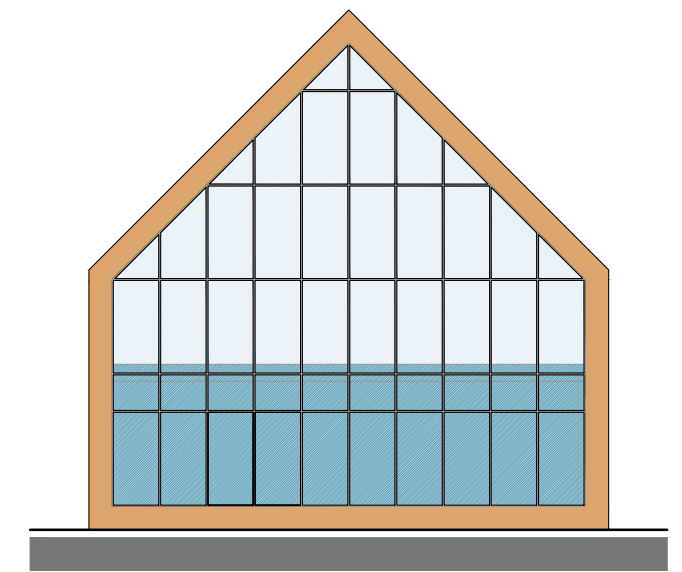




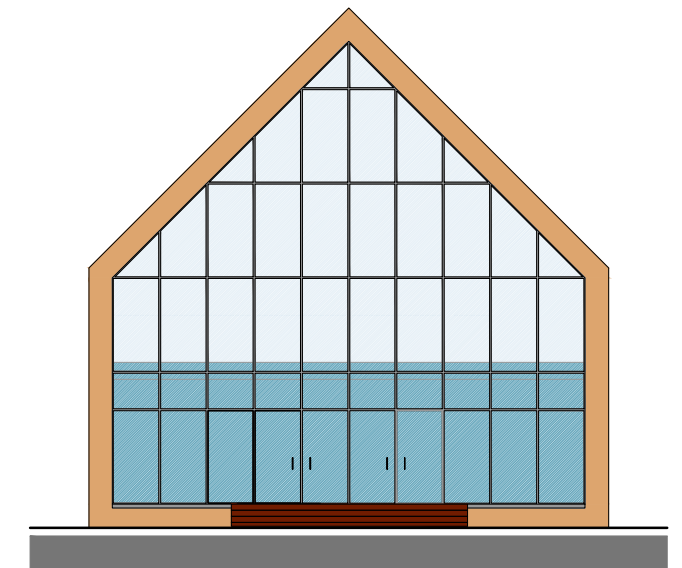
PIANTA PIANO TERRA



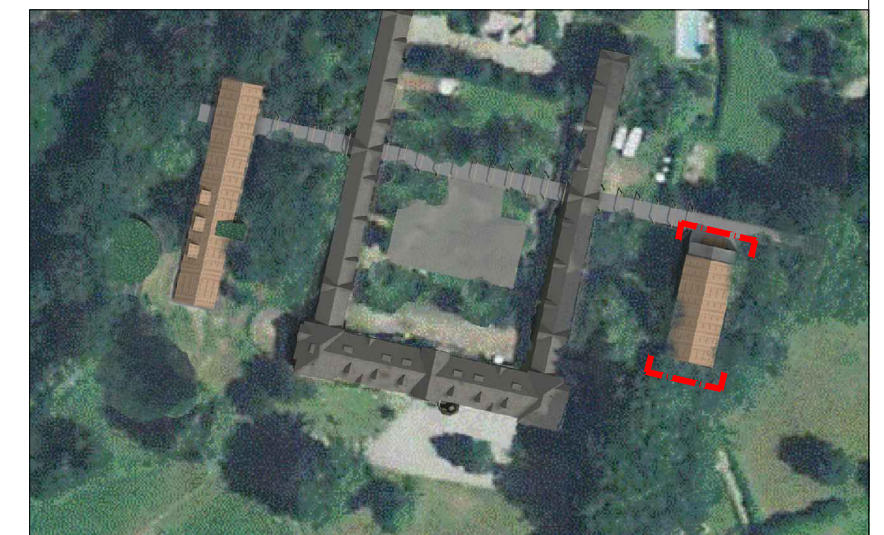
PIANTA PIANO PRIMO



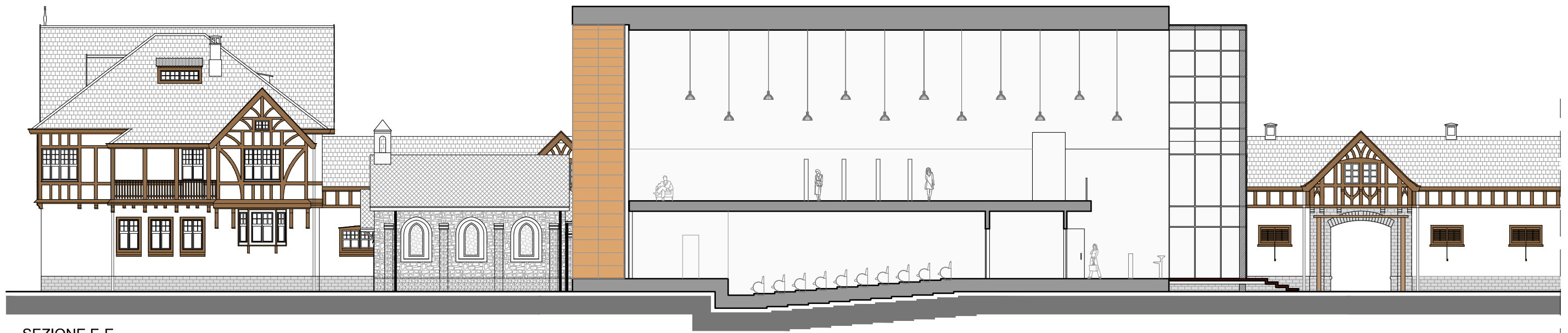
PROSPETTO SUD



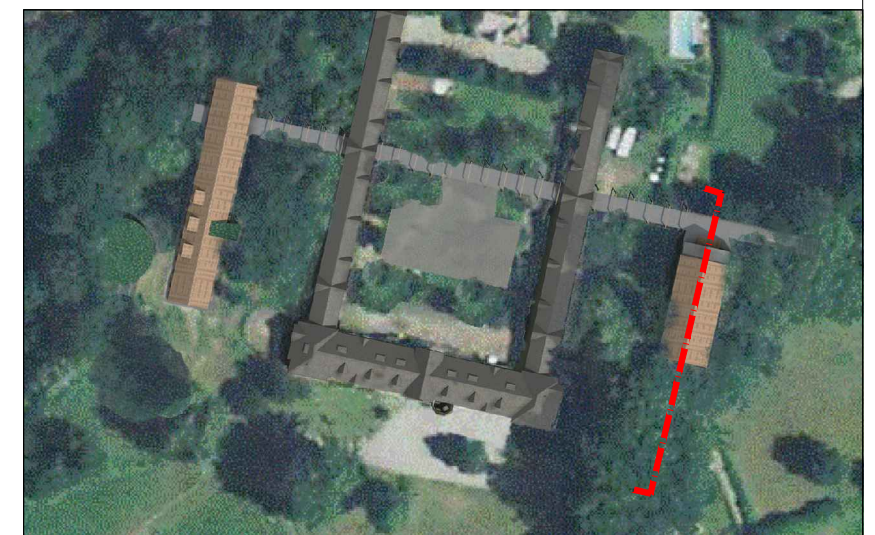
PROSPETTO NORD



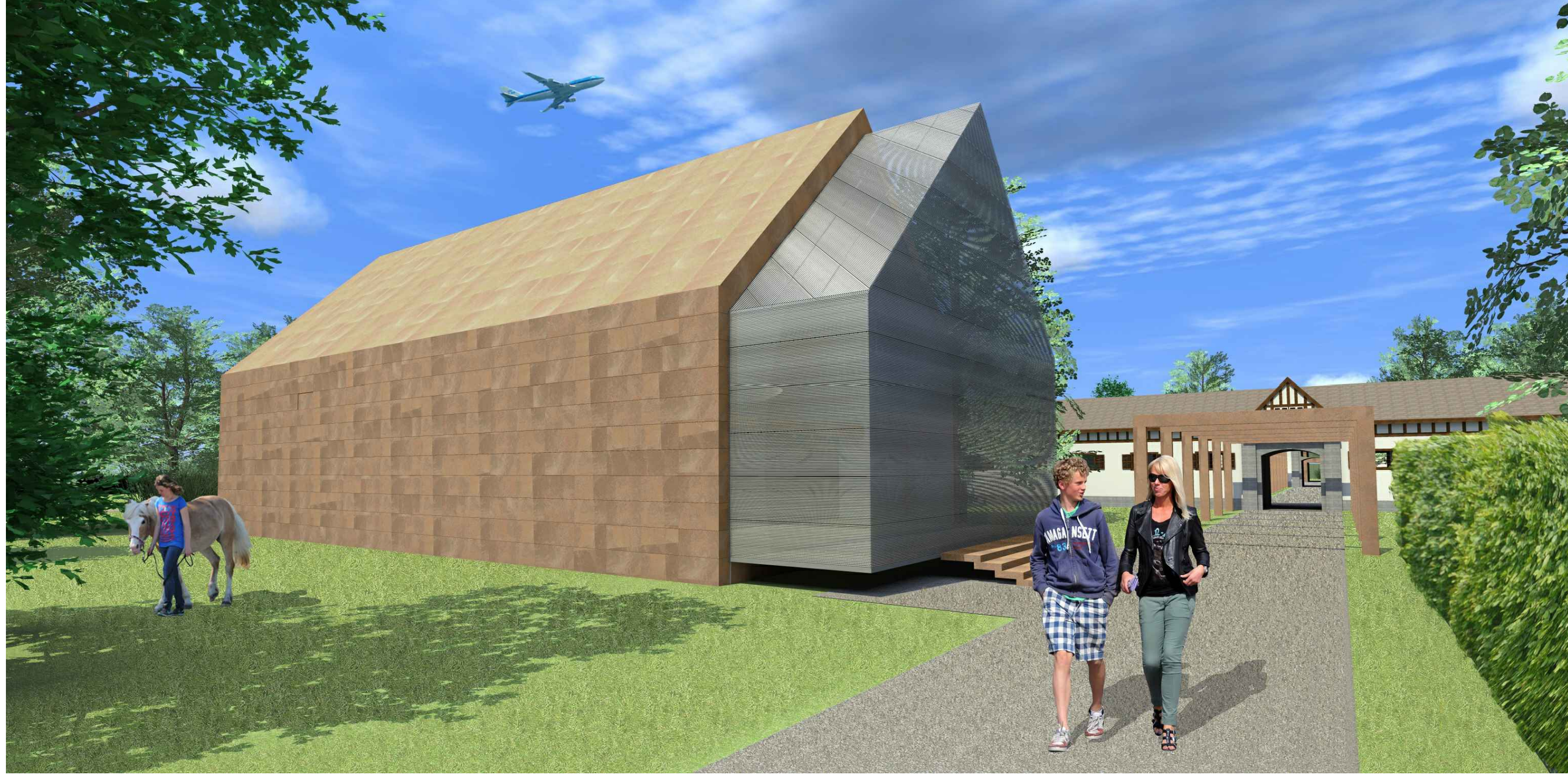
LOCALIZZAZIONE



SEZIONE E-E

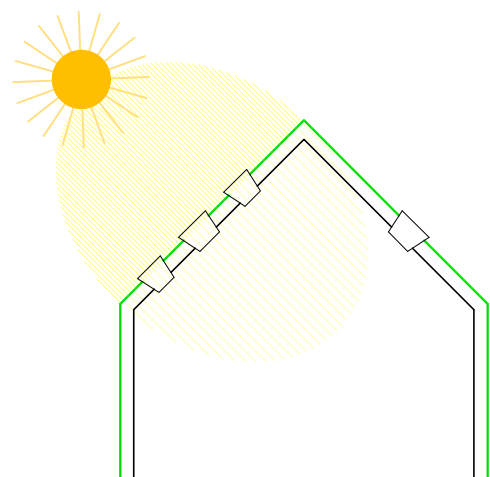


LOCALIZZAZIONE

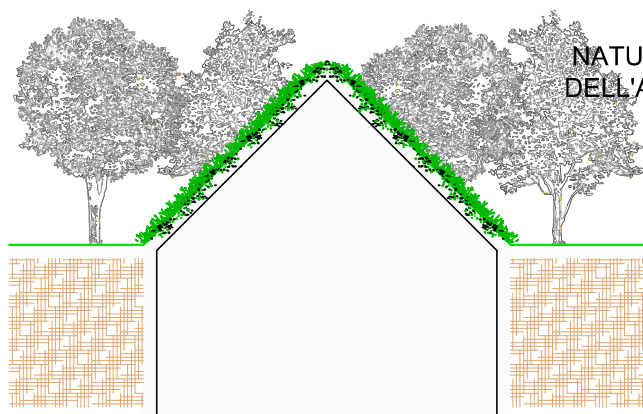


NUOVO IMPIANTO PER L'EQUITAZIONE

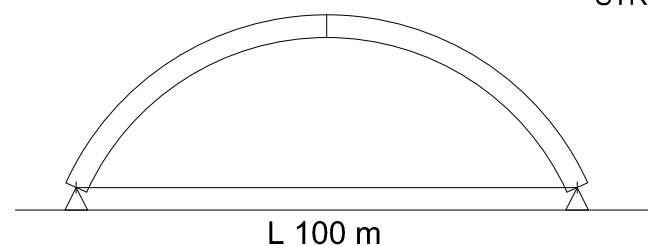
ECOCOMPATIBILITA'
E
SOSTENIBILITA'
AMBIENTALE



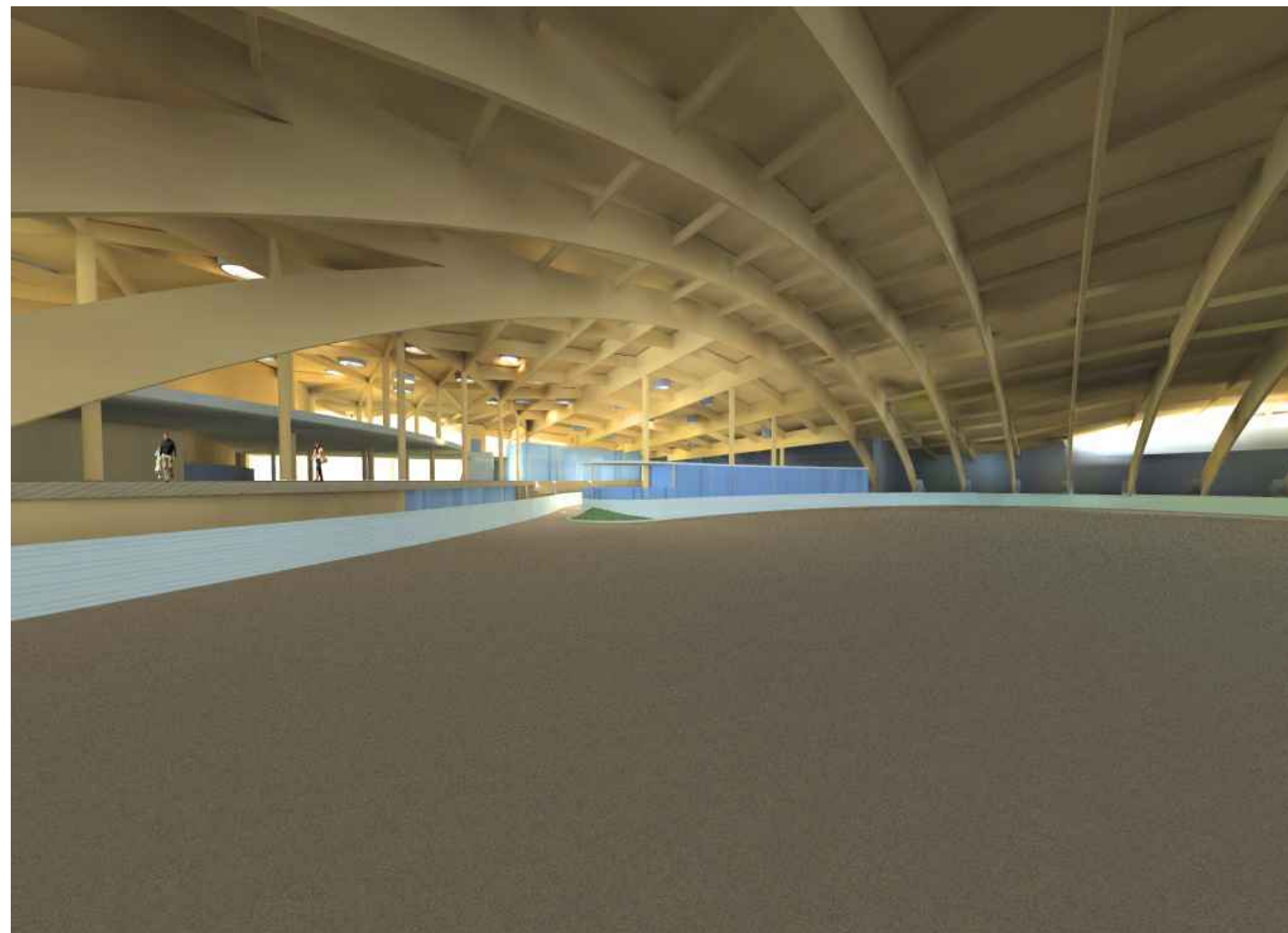
ILLUMINAZIONE
NATURALE

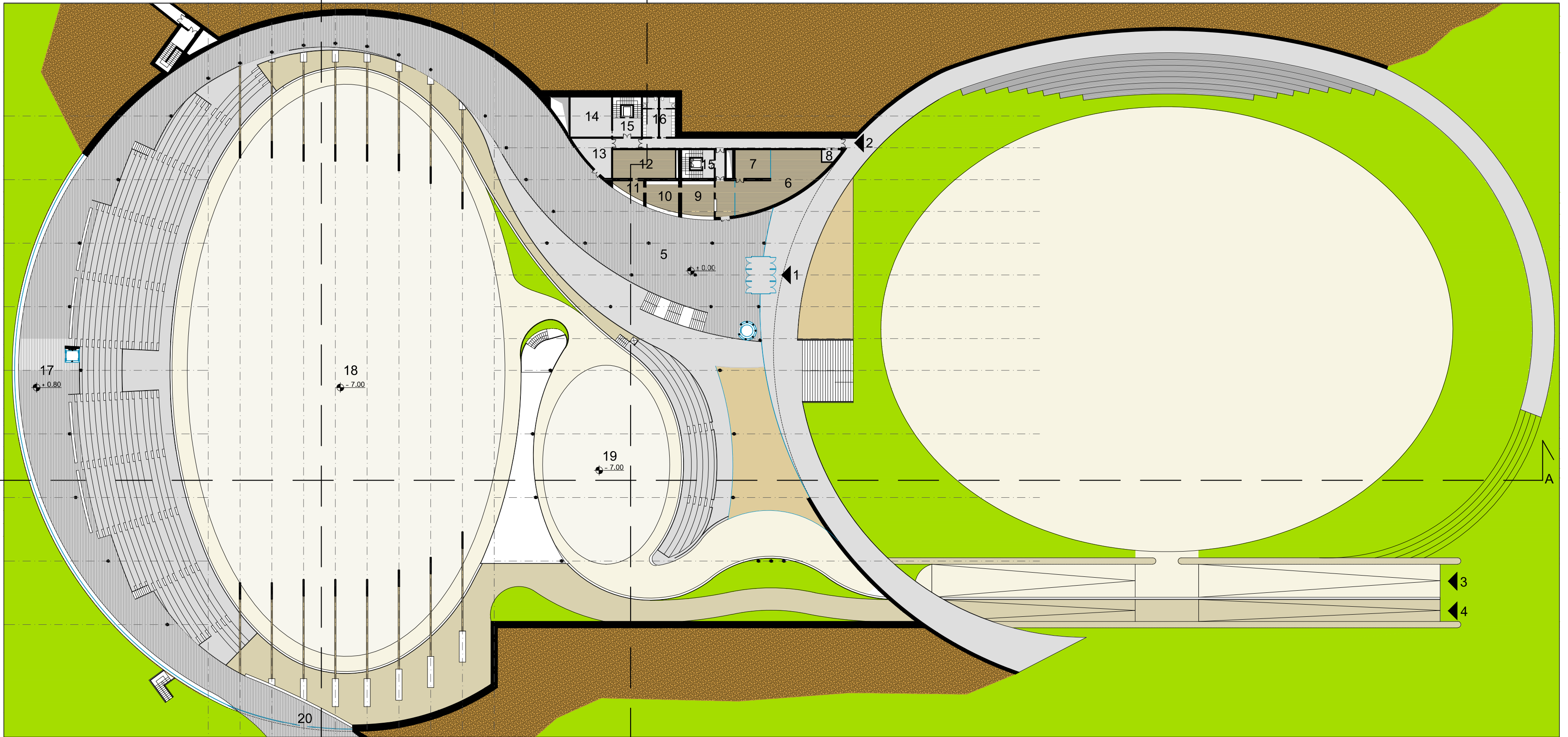


NATURALIZZAZIONE
DELL'ARCHITETTURA

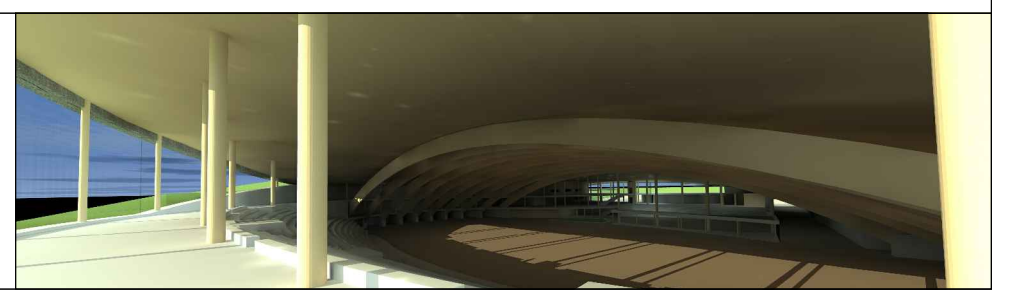


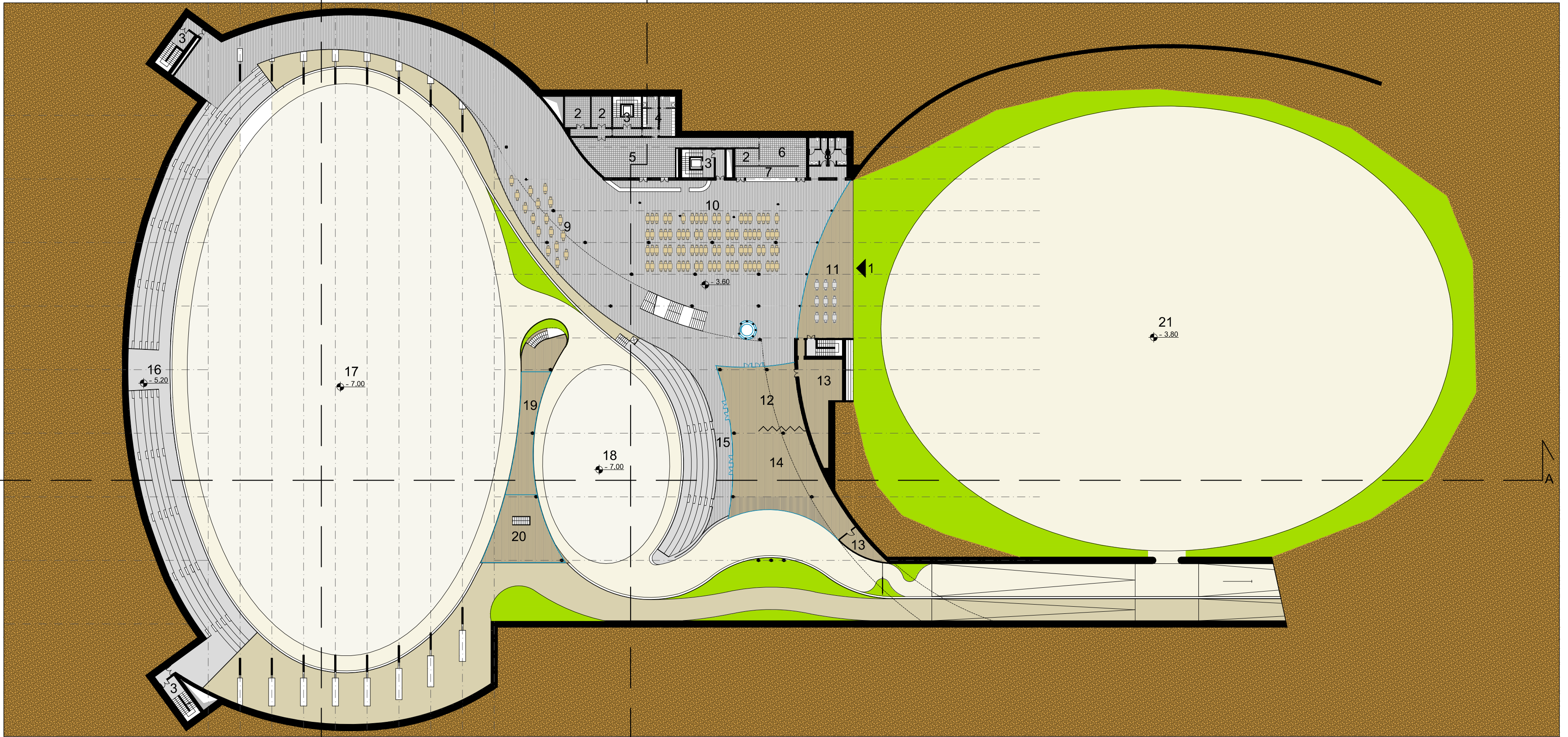
GRANDI
STRUTTURE



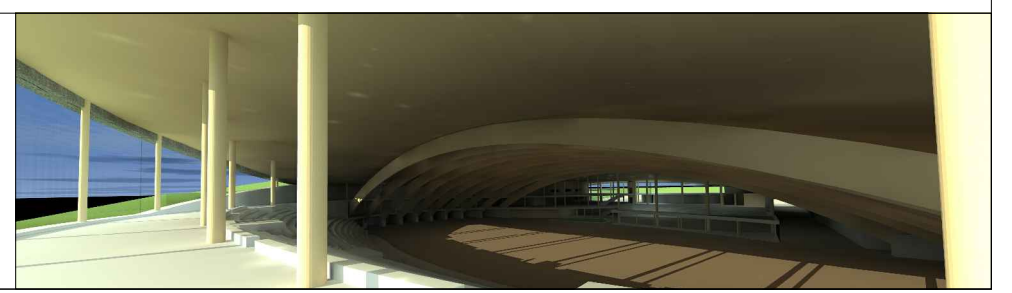


- | | | | |
|-------------------------------|------------------------------------|--------------------------|------------------------------|
| 1. INGRESSO PUBBLICO | 7. DIREZIONE | 13. LOCALE SICUREZZA | 19. CAMPO PROVA |
| 2. INGRESSO DI SERVIZIO | 8. CUSTODE | 14. LOCALE DI SERVIZIO | 20. USCITA VERSO CAMPO CROSS |
| 3. INGRESSO ATLETI E CAVALLI | 9. PUNTO INFORMAZIONI - SEGRETERIA | 15. SCALE DI EMERGENZA | |
| 4. INGRESSO MEZZI DI SOCCORSO | 10. BIGLIETTERIA | 16. SPOGLIATOI PERSONALE | |
| 5. HALL PUBBLICO | 11. GUARDAROBA | 17. TRIBUNE PUBBLICO | |
| 6. AMMINISTRAZIONE | 12. DEPOSITO GUARDAROBA | 18. CAMPO GARA | |



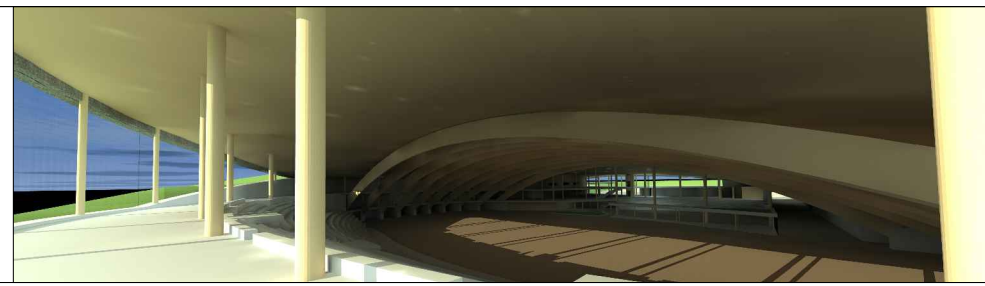


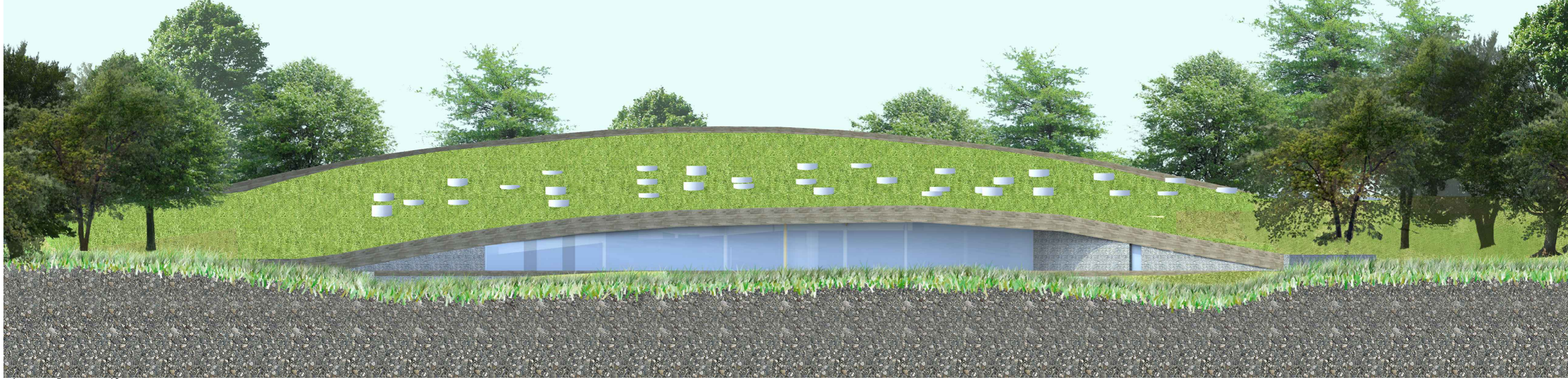
- | | | | |
|--------------------------------------|------------------------------|---|------------------------|
| 1. INGRESSO PUBBLICO PIANO RISTORO | 7. BAR | 13. LOCALI DI SUPPORTO ALLA SALA BRIEFING | 18. CAMPO PROVA |
| 2. DEPOSITO ALIMENTI | 8. SERVIZI IGIENICI PUBBLICO | 14. SALA BRIEFING | 19. SALA GIURIA |
| 3. SCALE DI EMERGENZA | 9. TERRAZZA BAR INTERNA | 15. TRIBUNE PUBBLICO CAMPO PROVA | 20. SALA MEDIA |
| 4. SPOGLIATOI PERSONALE BAR E CUCINA | 10. ZONA SELF SERVICE | 16. TRIBUNE PUBBLICO CAMPO GARA | 21. CAMPO GARA ESTERNO |
| 5. CUCINA | 11. TERRAZZA BAR ESTERNA | 17. CAMPO GARA | |
| 6. LOCALE PREPARAZIONE | 12. SALA BRIEFING | | |





- | | | | |
|-------------------------------|-------------------------------|---------------------------------|-------------------------------|
| 1. INGRESSO ATLETI E CAVALLI | 6. CAMPO GARA | 11. SPOGLIATOIO GIUDICI | 16. HALL ATLETI |
| 2. INGRESSO MEZZI DI SOCCORSO | 7. AREA MEZZI DI SOCCORSO | 12. CONTROLLO ANTIDOPING ATLETI | 17. SPOGLIATOI PERSONALE |
| 3. CONTROLLO ACCESSI | 8. SERVIZI IGIENICI ADDETTI | 13. PRESIDIO MEDICO | 18. LOCALE IMPIANTI |
| 4. ZONA POSTA CAVALLI | 9. PARTERRE - ZONA ISTRUTTORI | 14. MAGAZZINO | 19. SCALE DI EMERGENZA |
| 5. CAMPO PROVA | 10. SPOGLIATOIO ATLETI | 15. PRONTO SOCCORSO | 20. SERVIZI IGIENICI PUBBLICO |





1 5 10





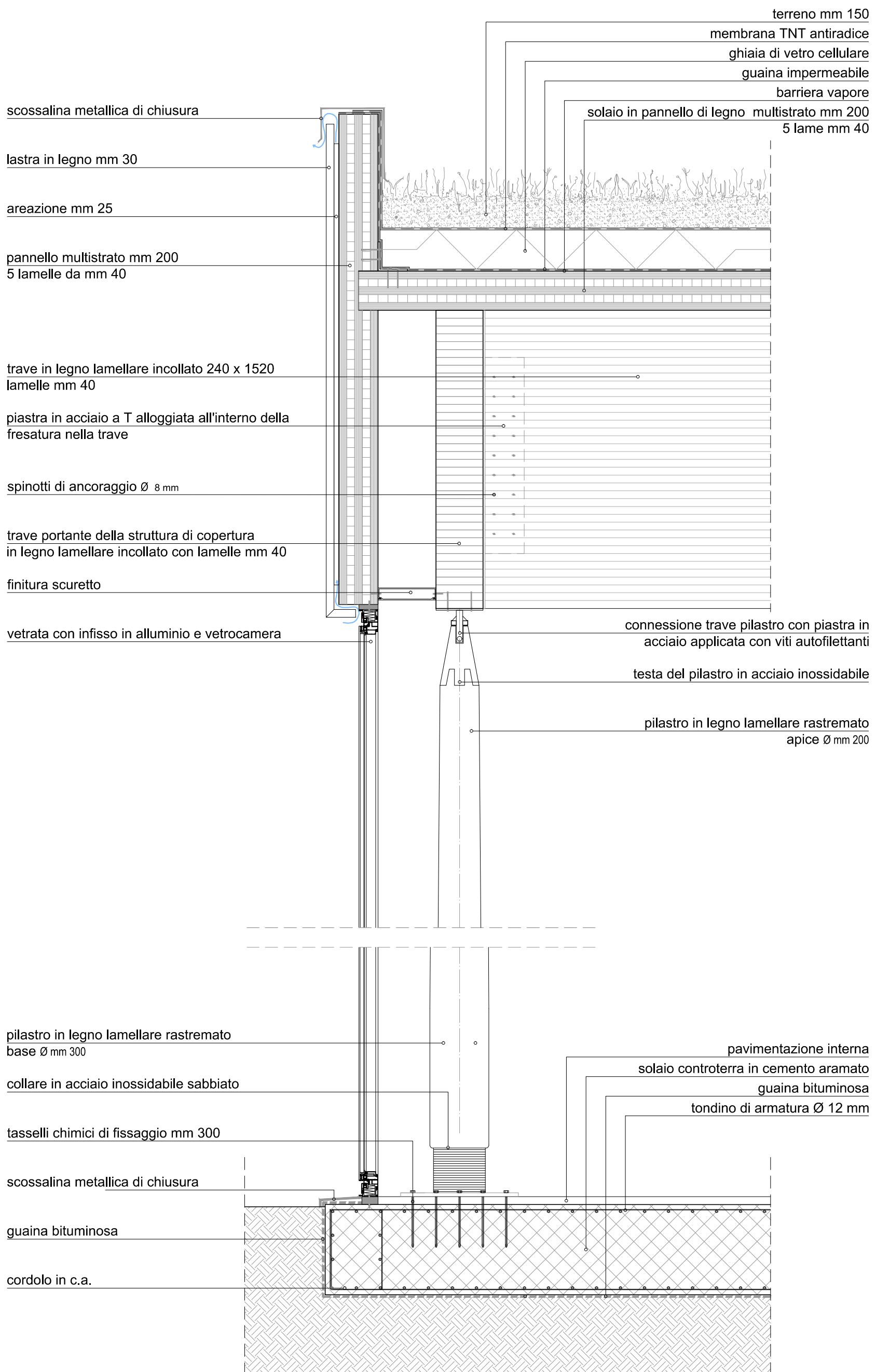
1 5 10





1 5 10





parete in pannello multistrato mm 200
5 lamelle da mm 40

traverso in legno 50 x 80

isolamento in lana di legno mm 80

striscia antivibrazione

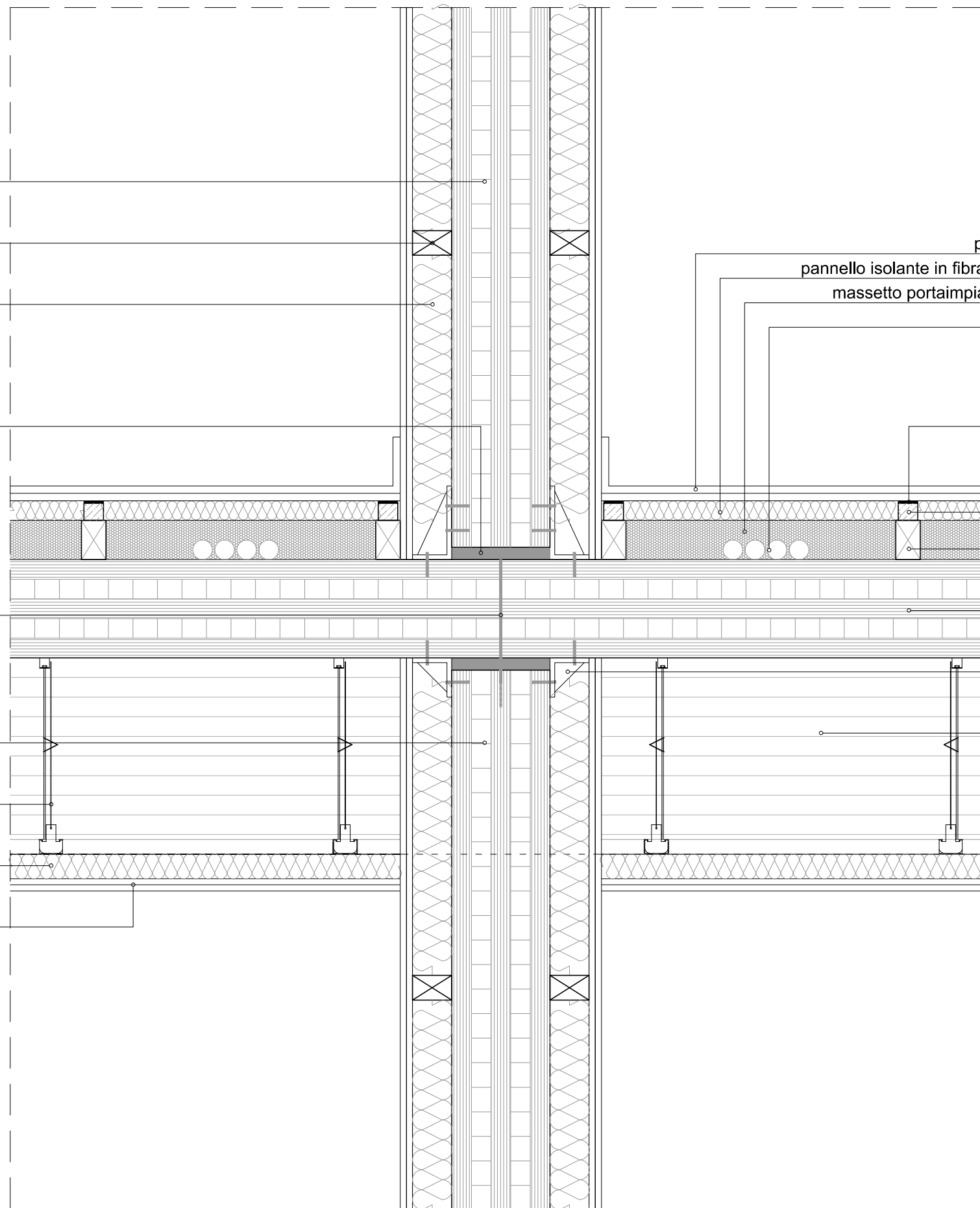
viti di fissaggio dell'elemento parete con
l'elemento solaio

pannello multistrato mm 200
5 lamelle da mm 40

ganci porta controsoffitto

isolante in lana di roccia mm 50

doppia lastra in cartongesso 2 x mm 125



pavimento di assi in legno lunare

pannello isolante in fibra di legno ad alta densità mm 40

massetto portaimpanti in sughero granulare mm 80

impianti

striscia in gomma naturale antivibrante

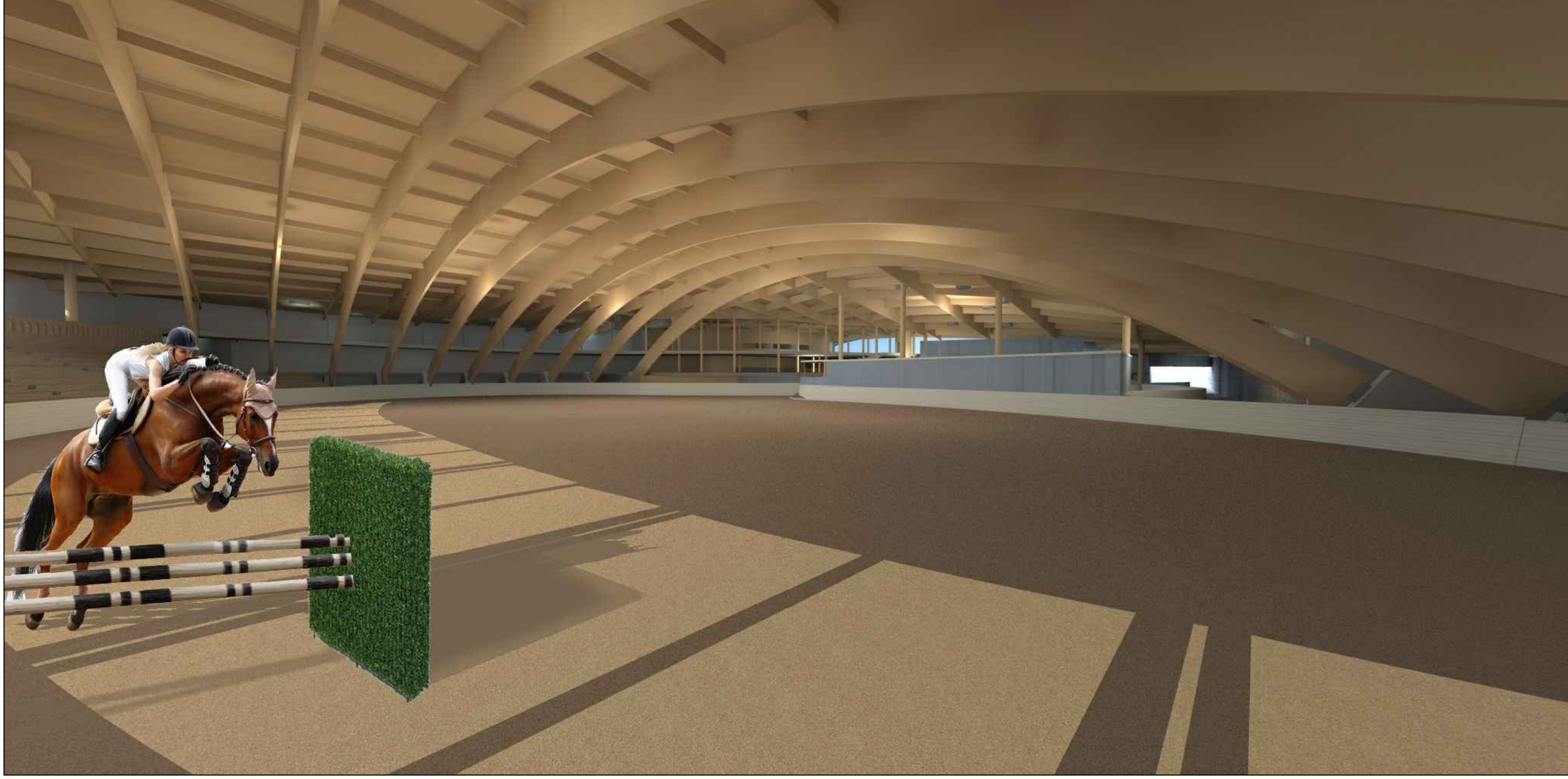
listelli in legno 40 x 40

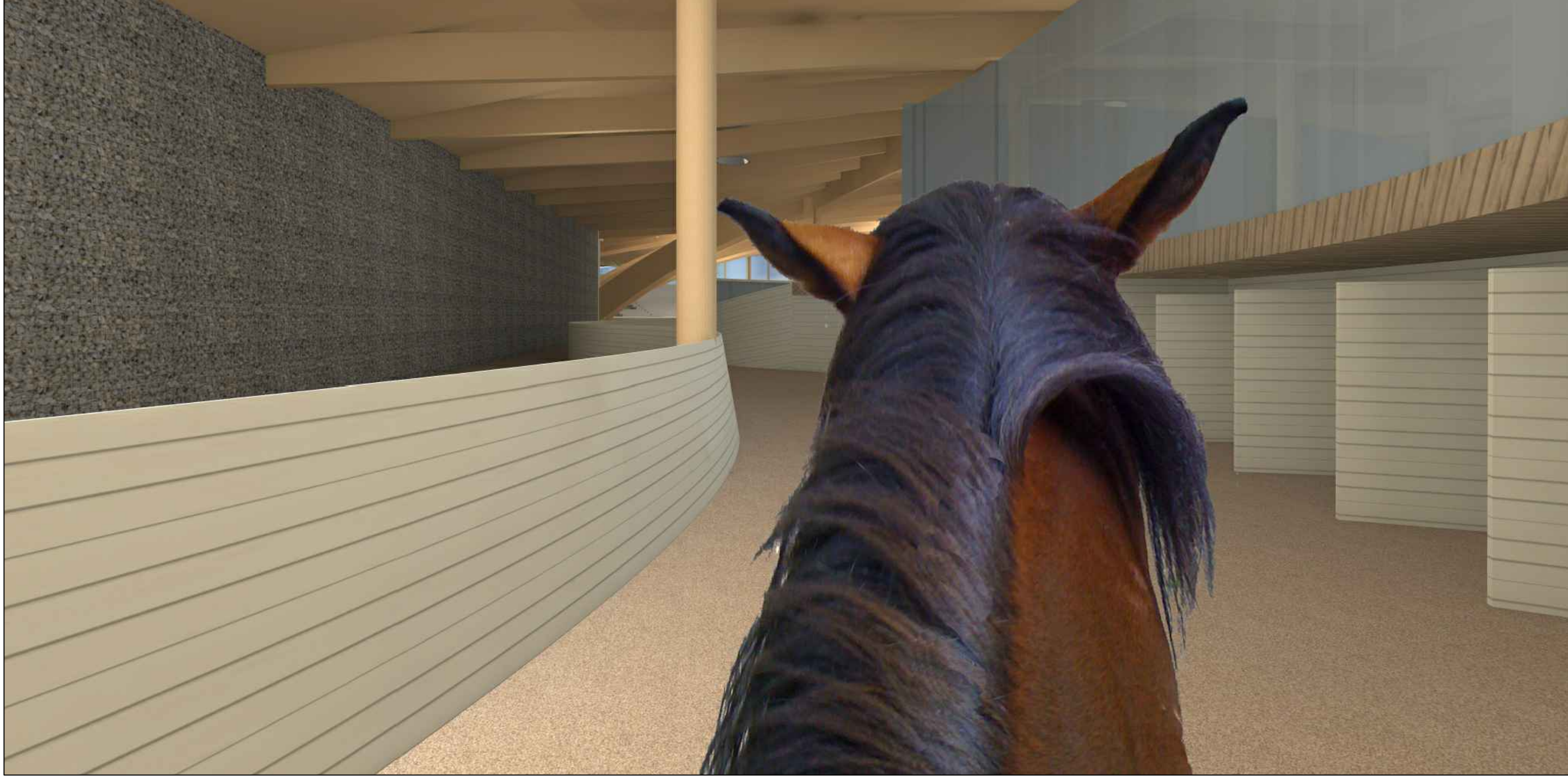
travetti in legno 80 x 50

solaio in pannello di legno multistrato mm 200
5 lame mm 40

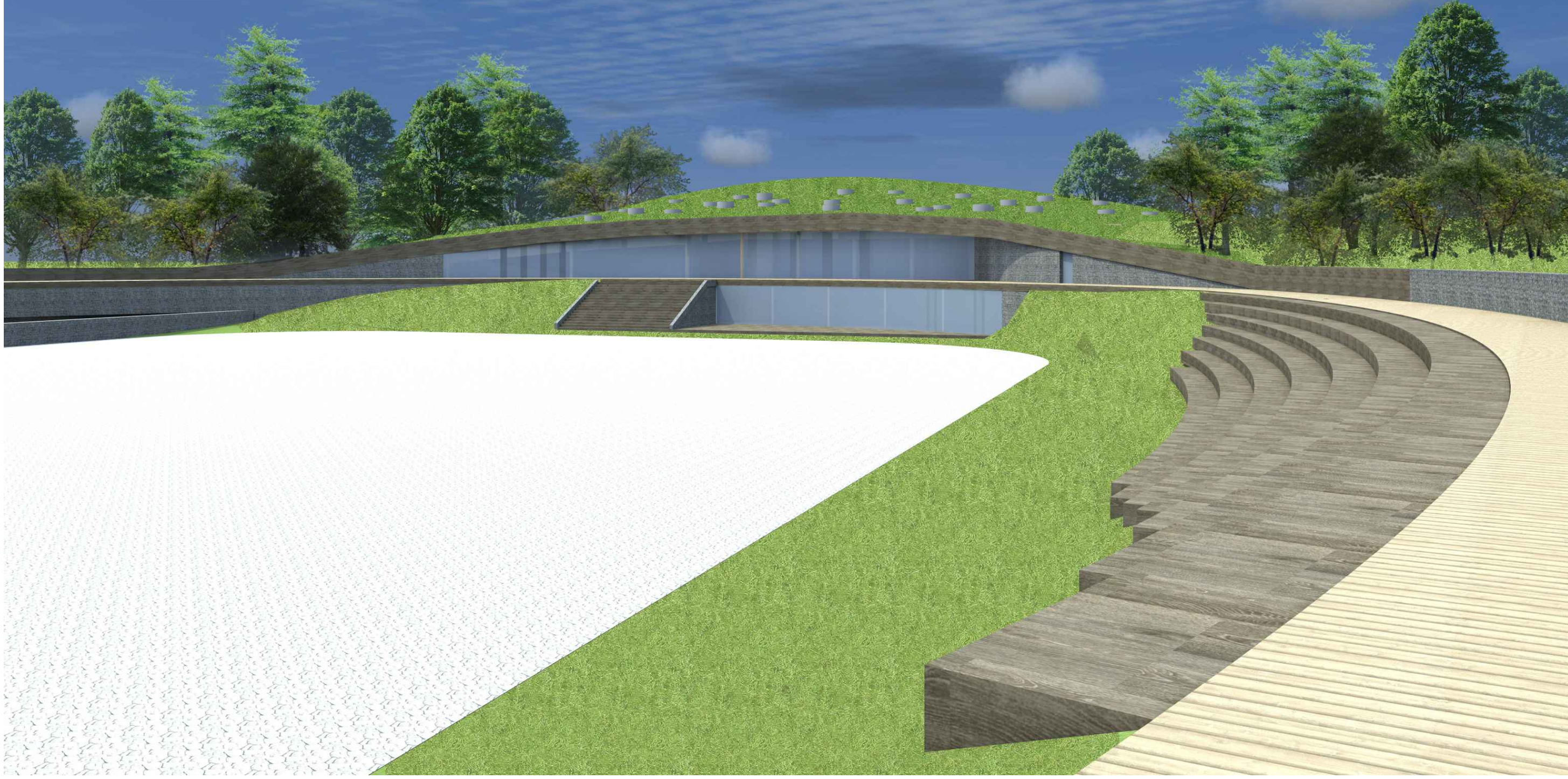
ferri angolari di fissaggio dell'elemento
parete con l'elemento solaio

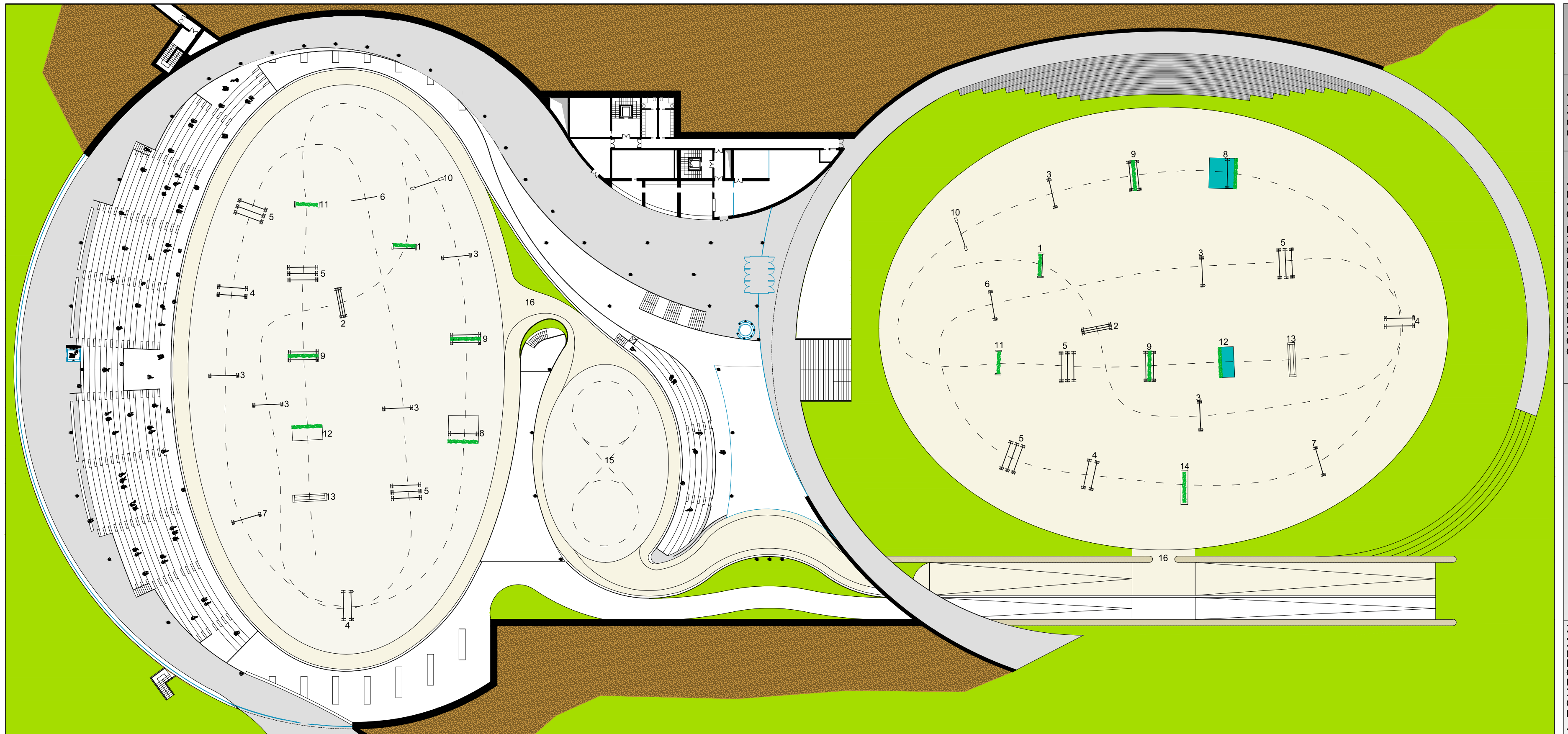
trave in legno lamellare incollato 160 x 400
passante tramite alloggiamento in una tasca
ricavata all'interno della parete







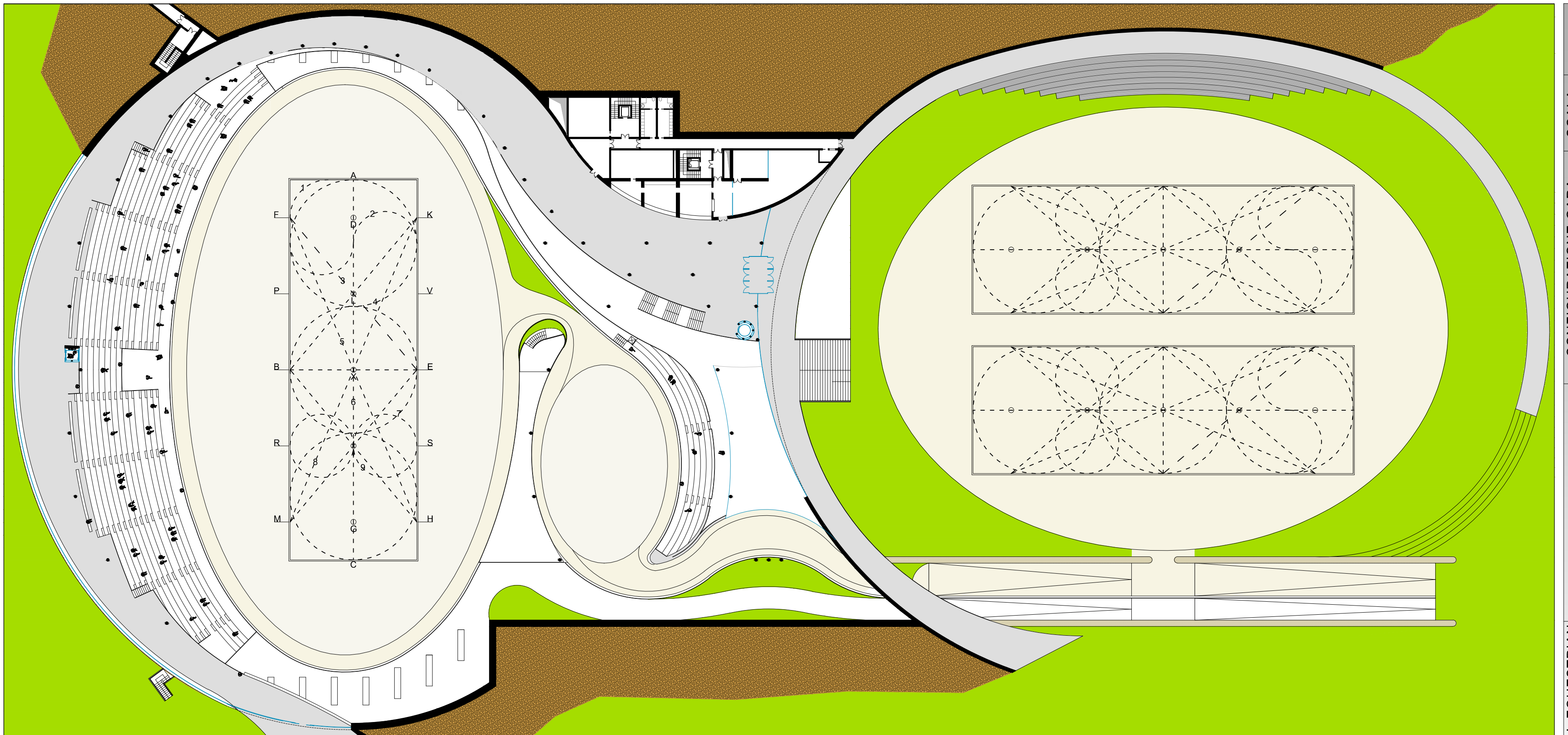




- | | |
|-----------------------|---------------------|
| 1. SIEPE CON BARRIERA | 7. CANCELLO |
| 2. FERRO DA STIRO | 8. RIVIERA |
| 3. DRITTO | 9. OXER |
| 4. LARGO | 10. TAVOLE |
| 5. TRIPLICE | 11. SIEPONE |
| 6. CROCE DI S. ANDREA | 12. SIEPE CON FOSSO |

- | |
|--|
| 13. MURO |
| 14. MURO CON SIEPE |
| 15. PERCORSI RISCALDAMENTO CAMPO PROVA |
| 16. INGRESSO CAMPO GARA |





- 1. GIRO DELLA PISTA ESTERNA
- 2. SERPENTINA
- 3. CONTROCAMBIO DI MANO
- 4. CAMBIO DI MANO AL CENTRO DEL MANEGGIO
- 5. TAGLIATA TRASVERSALE

- 6. CAMBIAMENTO DI MANO LONGITUDINALE
- 7. CIRCOLO
- 8. CAMBIAMENTO DI MANO DIAGONALE
- 9. OTTO
- A. ENTRATA
- X. PUNTO DI FERMO

