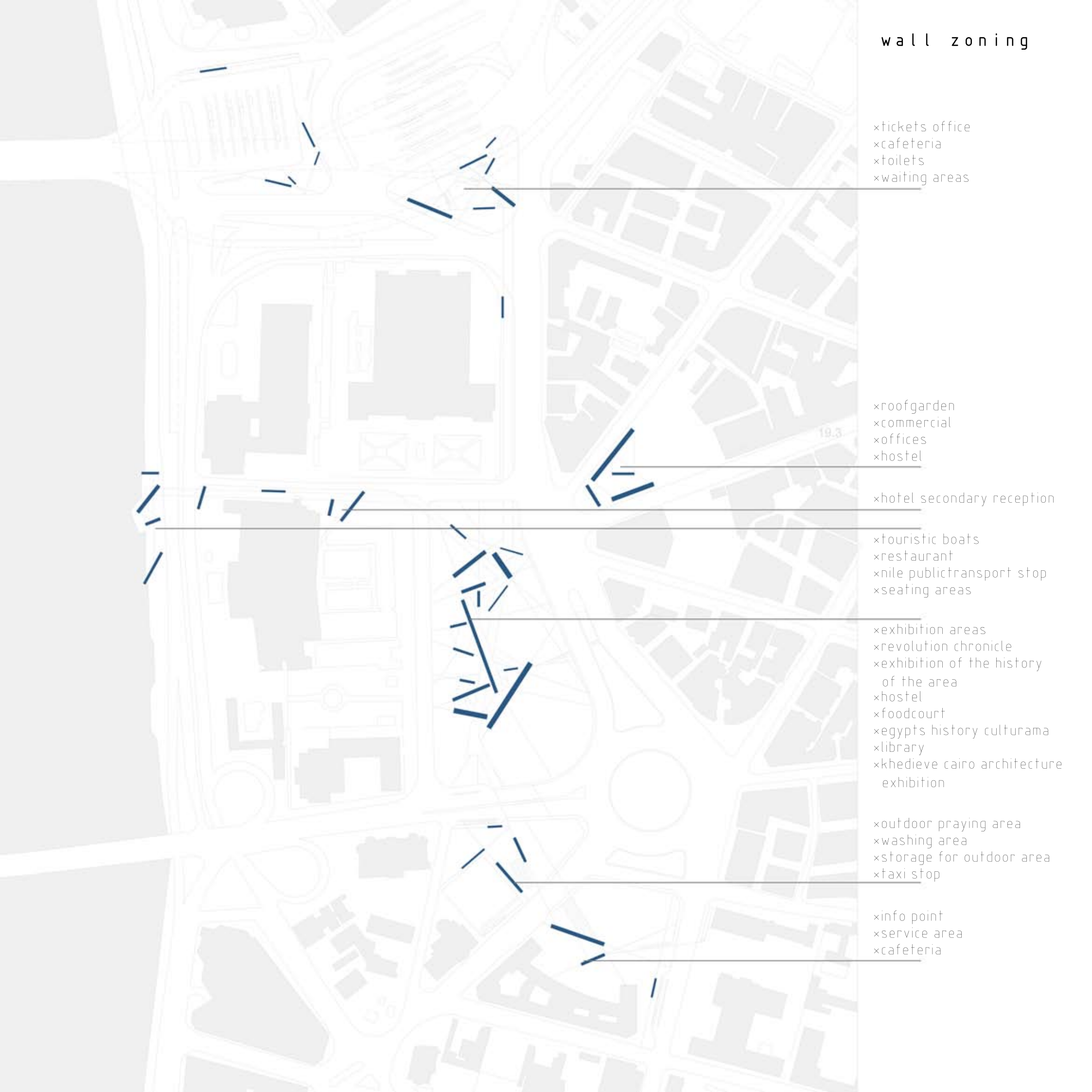


area analysis





wall zoning



The image shows a detailed architectural site plan of a building complex, overlaid with a zoning scheme. The plan features various building footprints, courtyards, and streets. A series of blue dashed lines represent the proposed wall zoning, which is divided into seven distinct zones. Each zone is connected to a list of planned facilities by a thin grey line. The zones are arranged vertically from top to bottom. The facilities listed for each zone include: tickets office, cafeteria, toilets, waiting areas; roof garden, commercial offices, hostel; hotel secondary reception; touristic boats, restaurant, Nile public transport stop, seating areas; exhibition areas, revolution chronicle, exhibition of the history of the area, hostel, foodcourt, Egypt's history culturama, library, Khedive Cairo architecture exhibition; outdoor praying area, washing area, storage for outdoor area, taxi stop; and info point, service area, cafeteria.

- ×tickets office
- ×cafeteria
- ×toilets
- ×waiting areas

- ×roofgarden
- ×commercial
- ×offices
- ×hostel

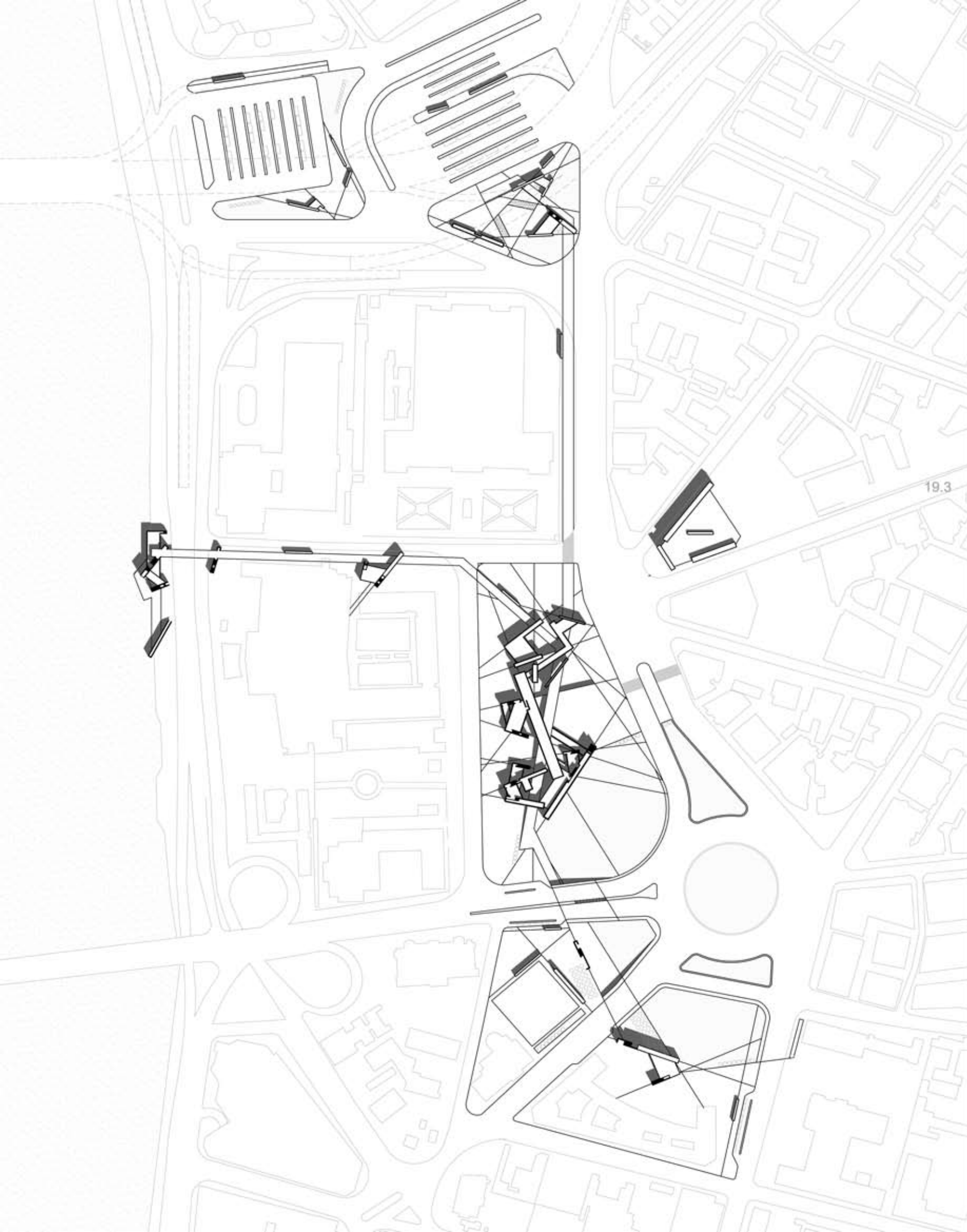
- ×hotel secondary reception

- ×touristic boats
- ×restaurant
- ×nile publictransport stop
- ×seating areas

- ×exhibition areas
- ×revolution chronicle
- ×exhibition of the history of the area
- ×hostel
- ×foodcourt
- ×egypts history culturama
- ×library
- ×khedieve cairo architecture exhibition

- ×outdoor praying area
- ×washing area
- ×storage for outdoor area
- ×taxi stop

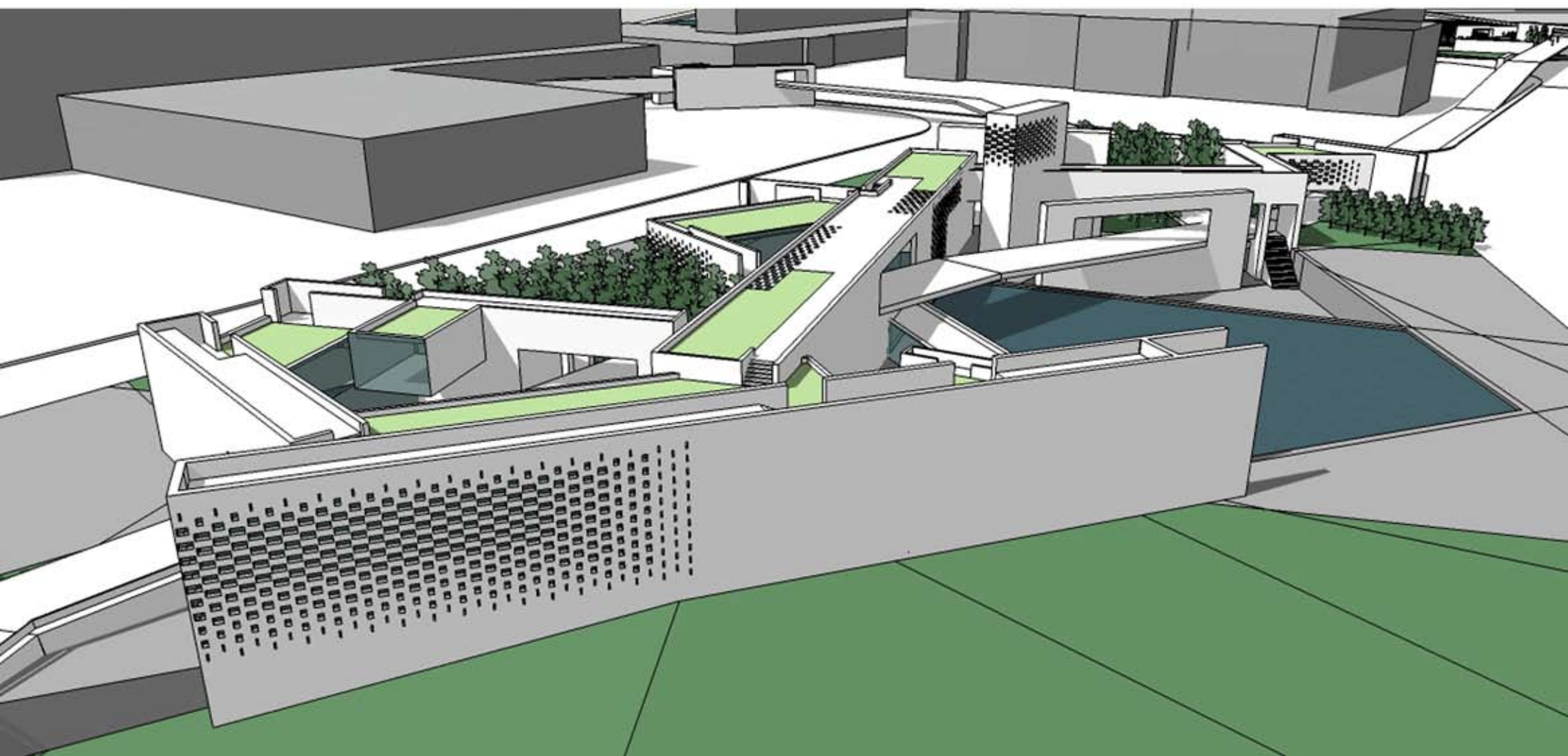
- ×info point
- ×service area
- ×cafeteria

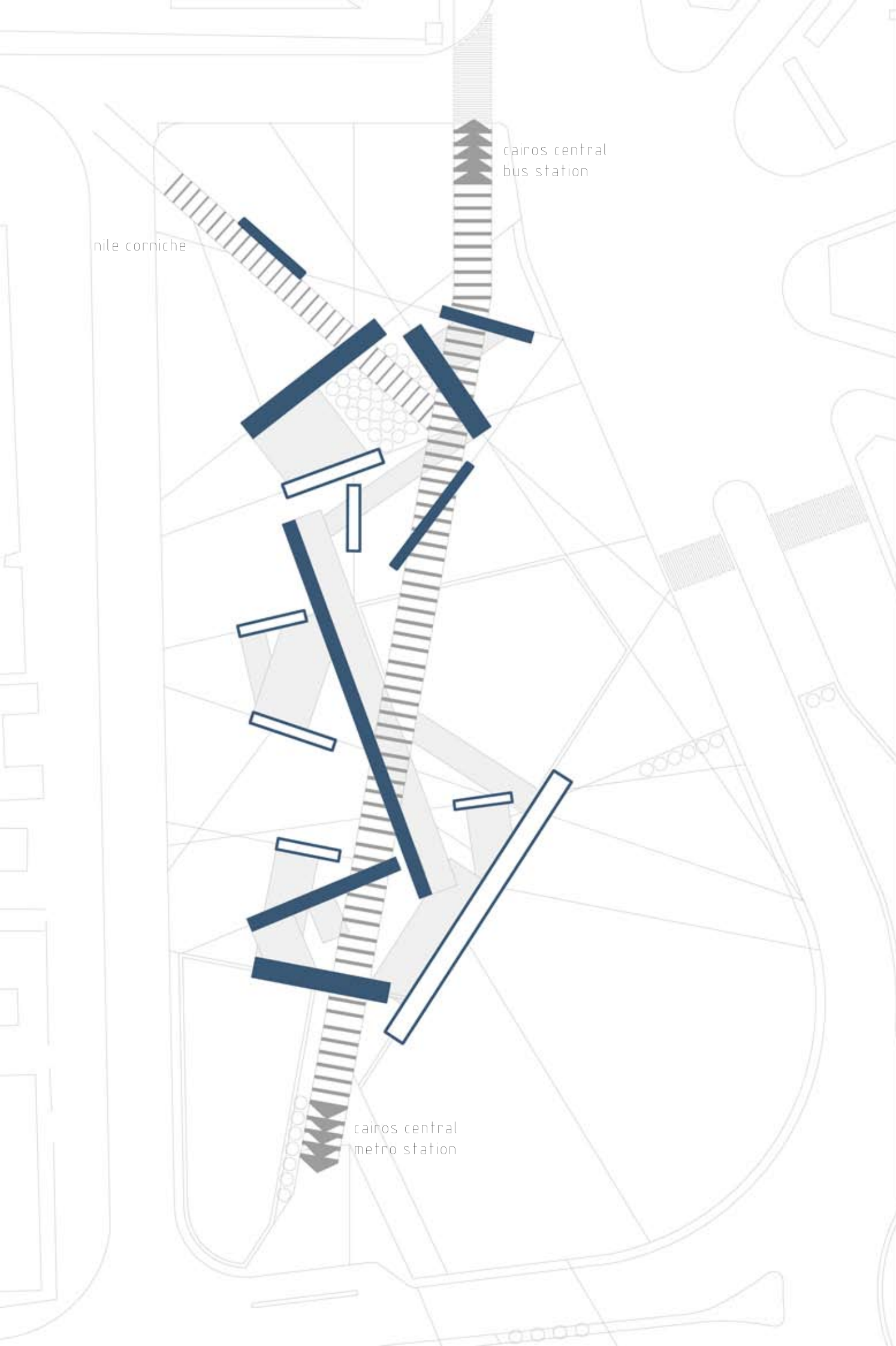




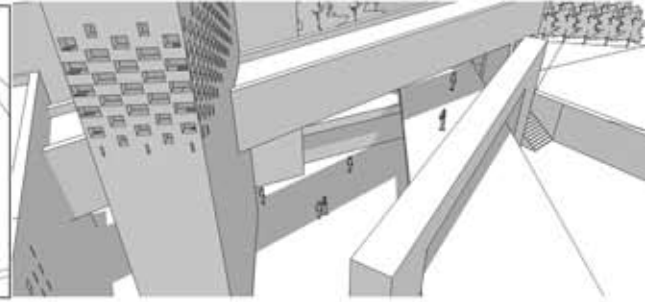
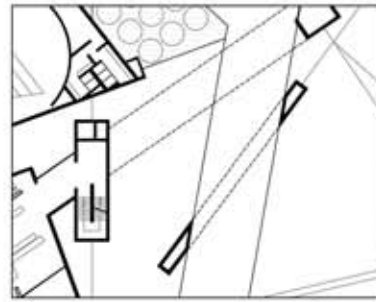
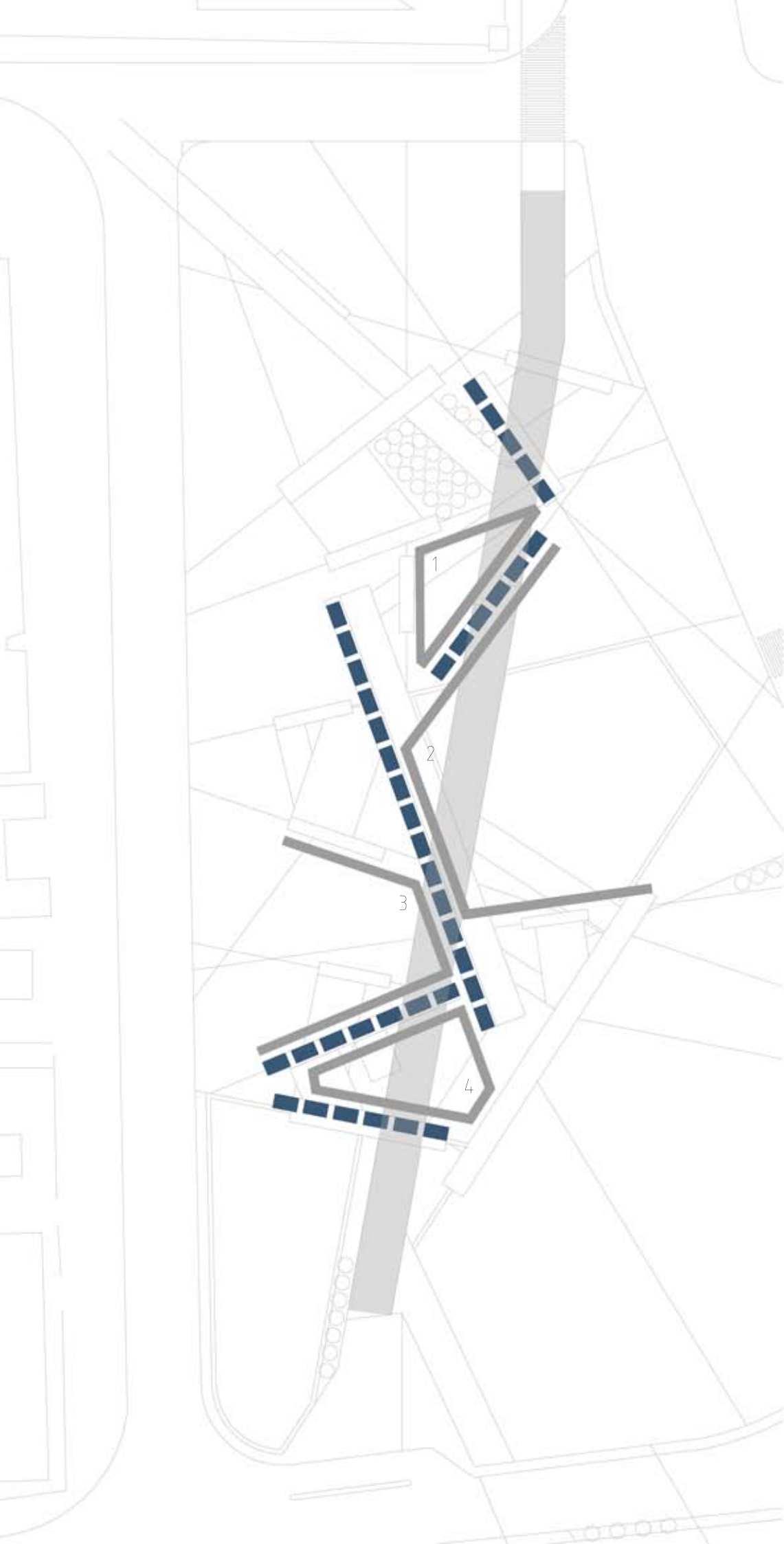
birds eye view

central cluster

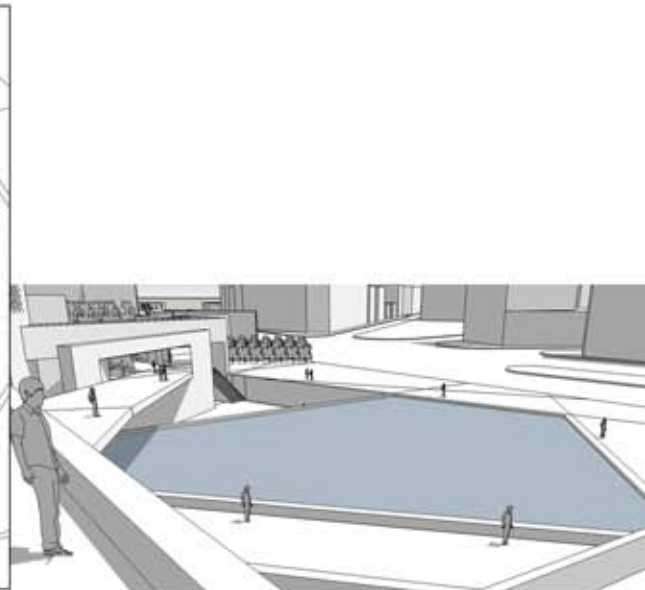
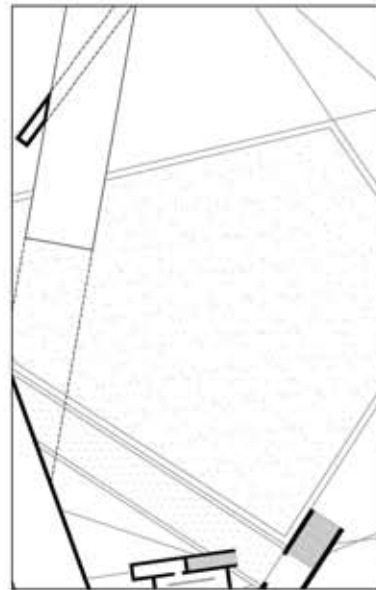




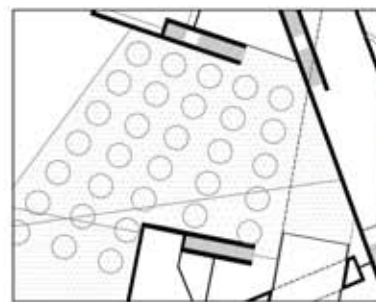
its not the idea of having purity of form but to allow accidents to happen, to make opportunism work.



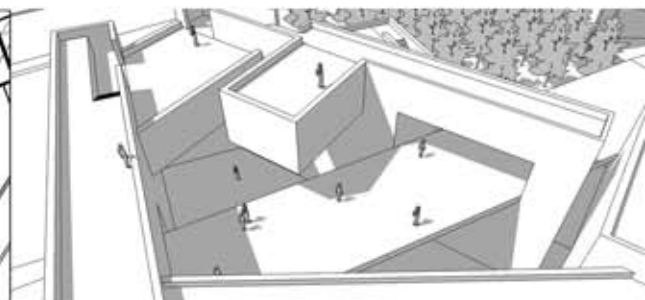
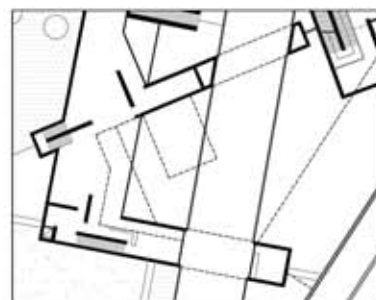
1_ semi enclosed space separated from the surrounding passing through various concrete blocks.



2_ an open space directing you vision toward the surrounding fabric.

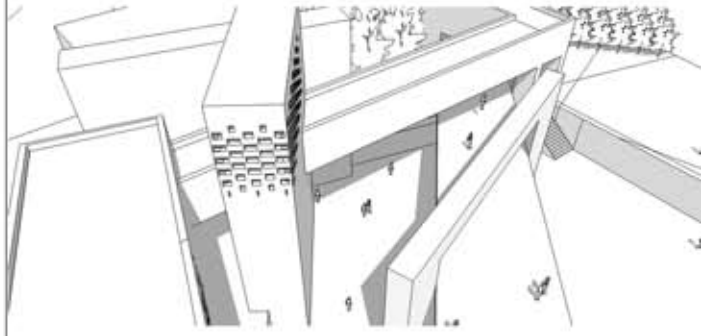
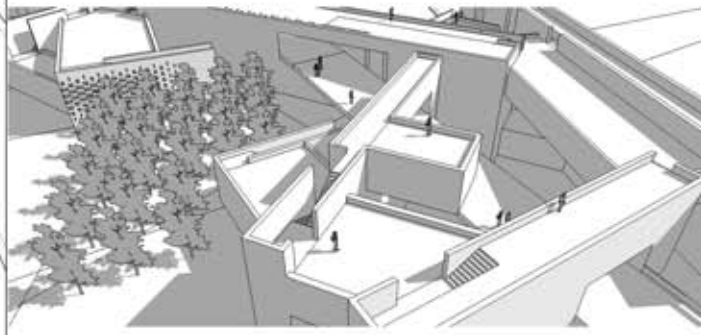
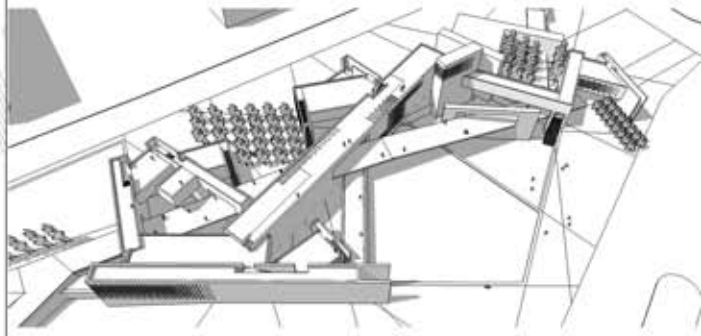
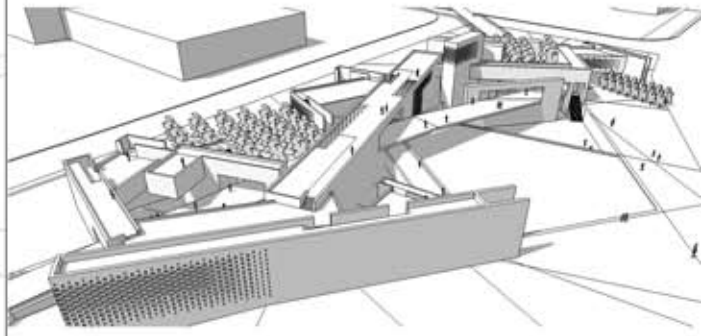
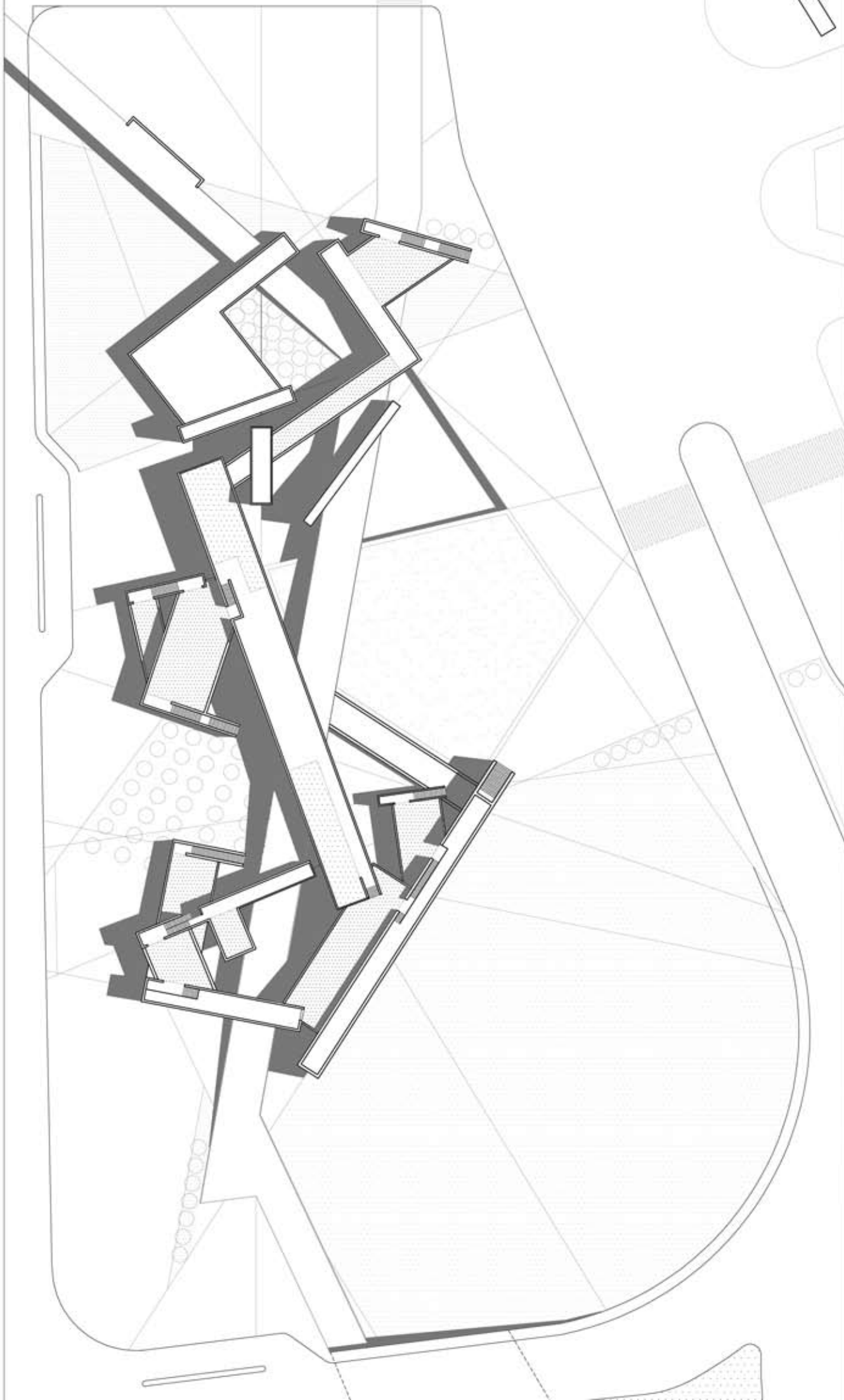


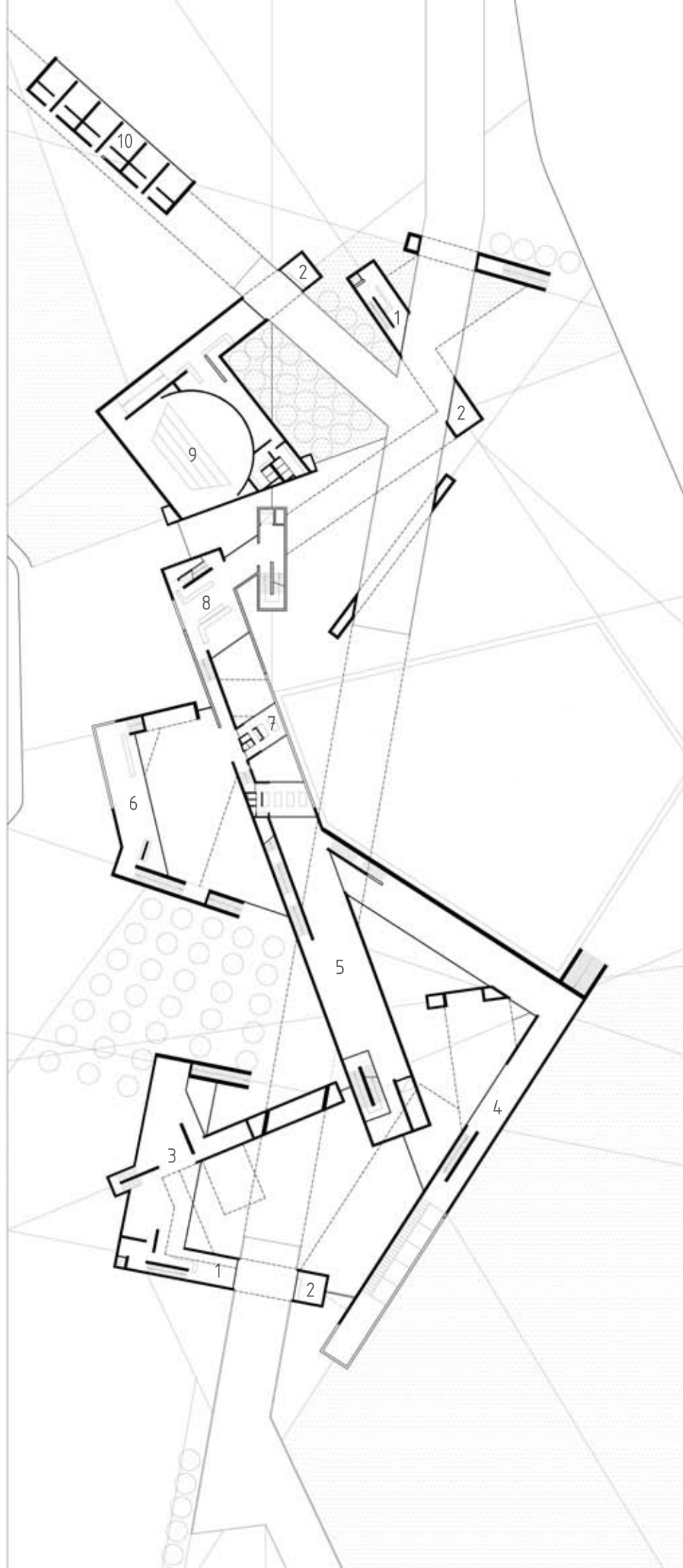
3_ semi enclosed space while in the same time open to nature.



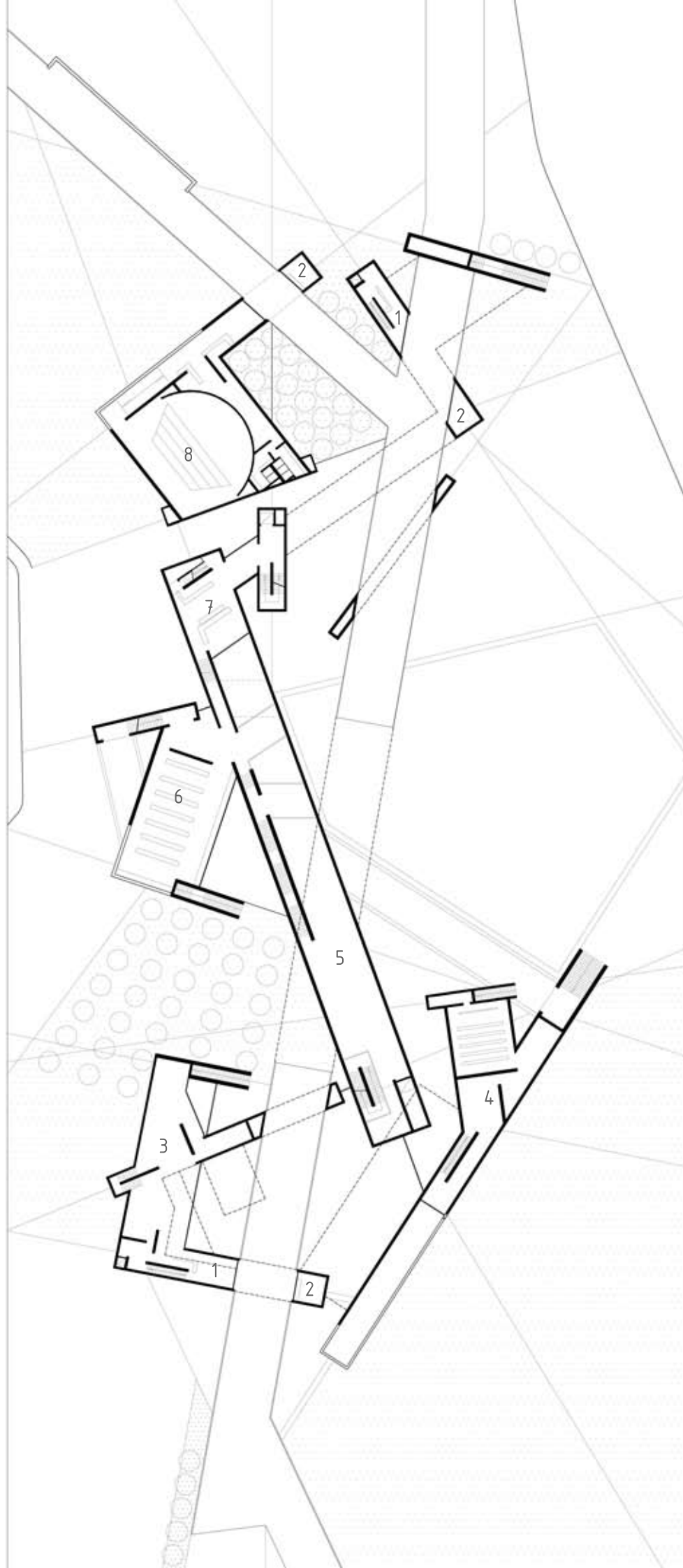
4_ different volumetric configuration generating spontaneous shadings.

Layout

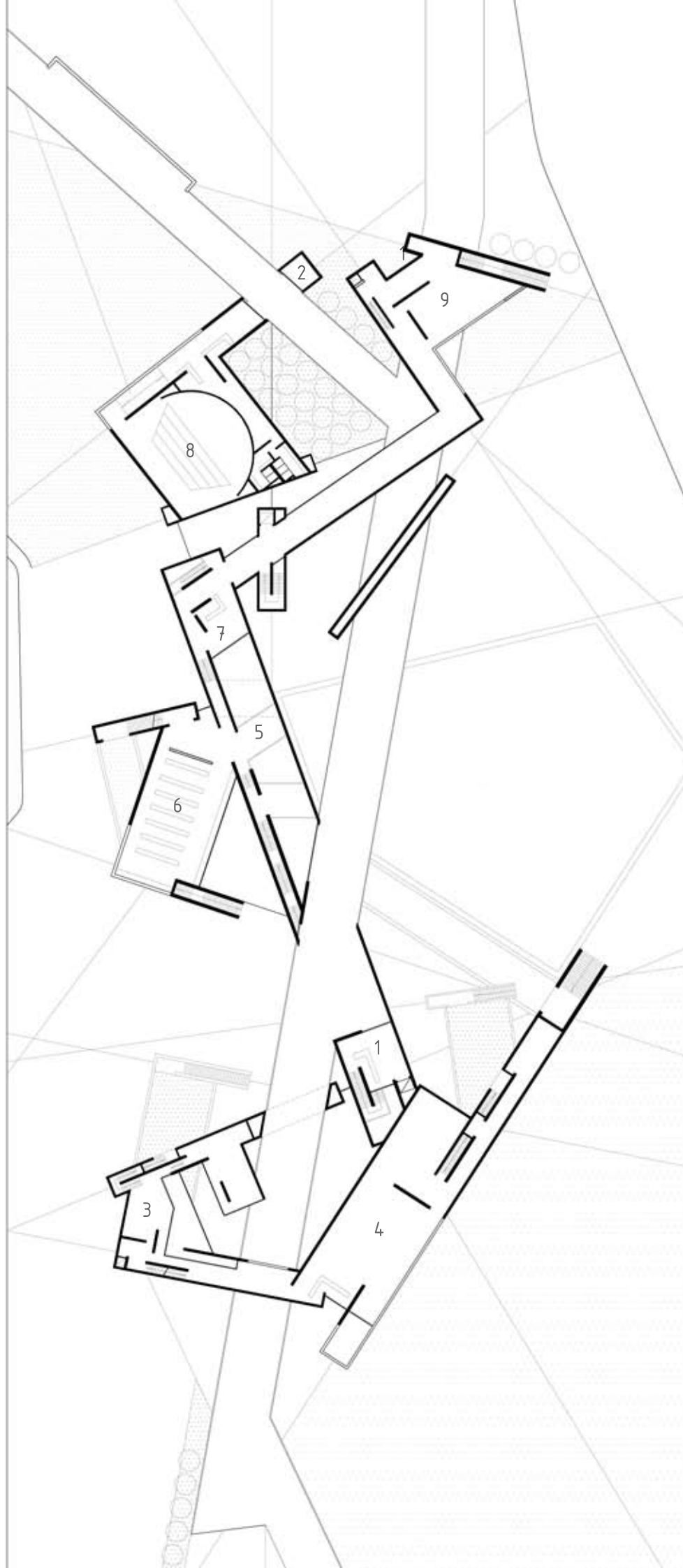




- 1_entrance hall
- 2_infopoint
- 3_exhibition area
- 4_revolution chronicle
- 5_collision hall
- 6_library entrance
- 7_hostel room
- 8_hostel reception
- 9_culturama
- 10_bazar



- 1_entrance hall
- 2_infopoint
- 3_exhibition area
- 4_revolution chronicle
- 5_collision hall
- 6_reading hall
- 7_hostel reception
- 8_culturama

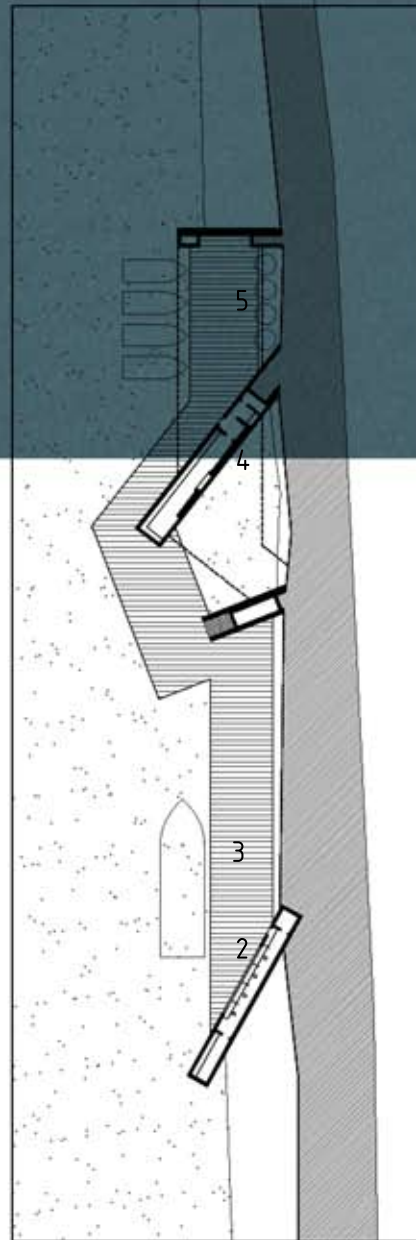
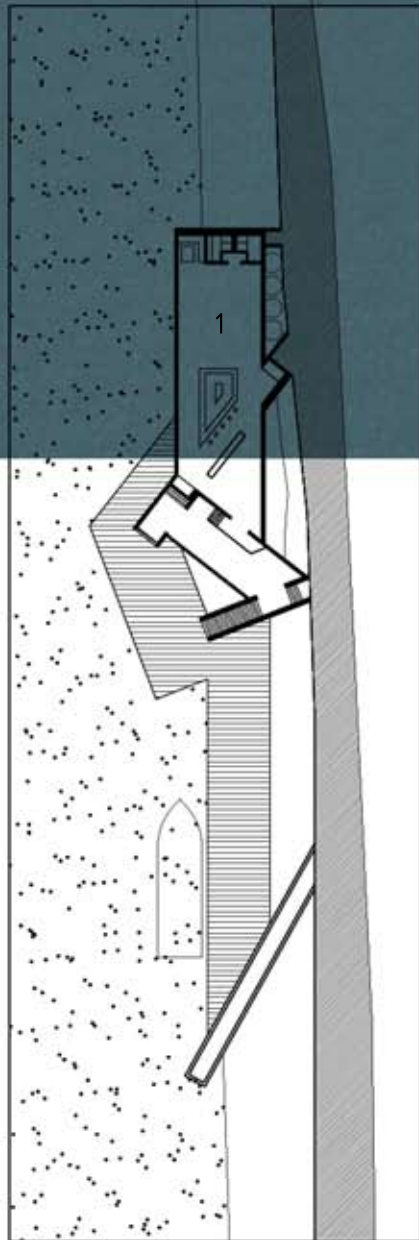


- 1_entrance hall
- 2_infopoint
- 3_exhibition area
- 4_revolution chronicle
- 5_balcony
- 6_reading hall
- 7_cafeteria
- 8_culturama
- 9_architecture heritage exh.



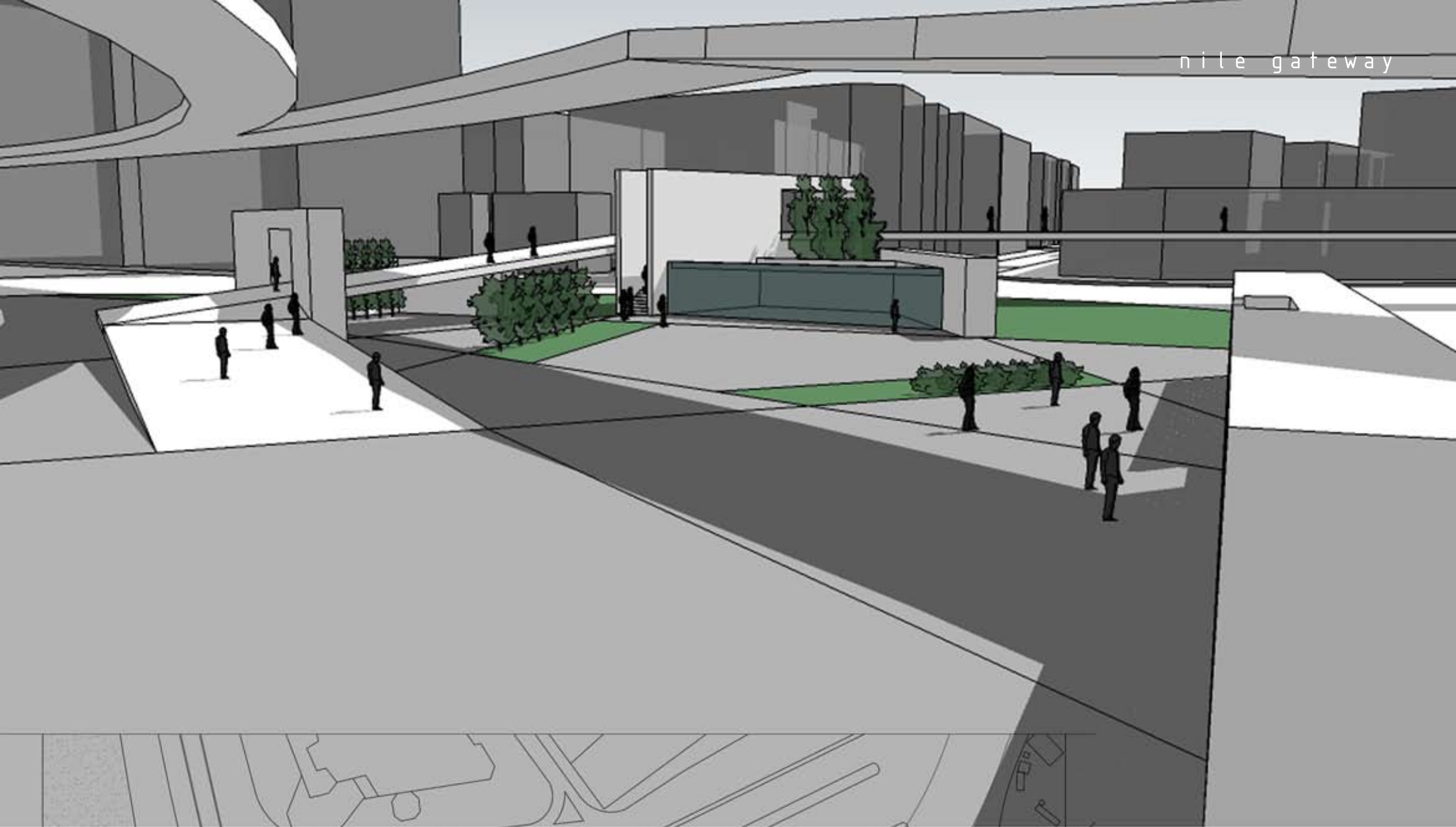
- 1_ taxi stop
- 2_ wash area
- 3_ shoe deposit+storage
- 4_ outdoor praying area
- 5_ infopoint
- 6_ services area





- 1_ restaurant
- 2_ ticket office
- 3_ Nile transport deck
- 4_ storage+toilets
- 5_ touristic bouts deck





- 1_restaurant/cafe
- 2_ticket office
- 3_toilets
- 4_cafeteria

