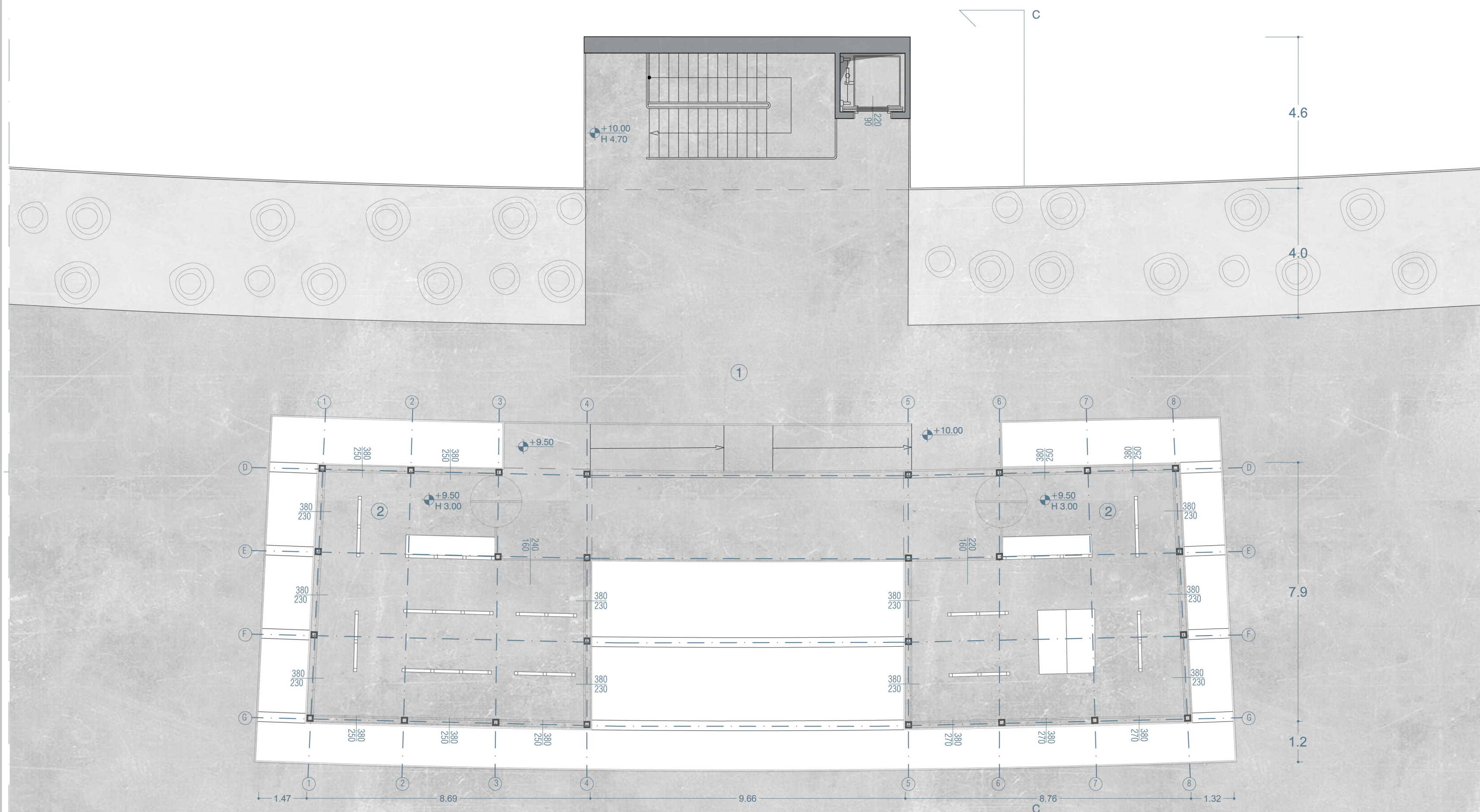
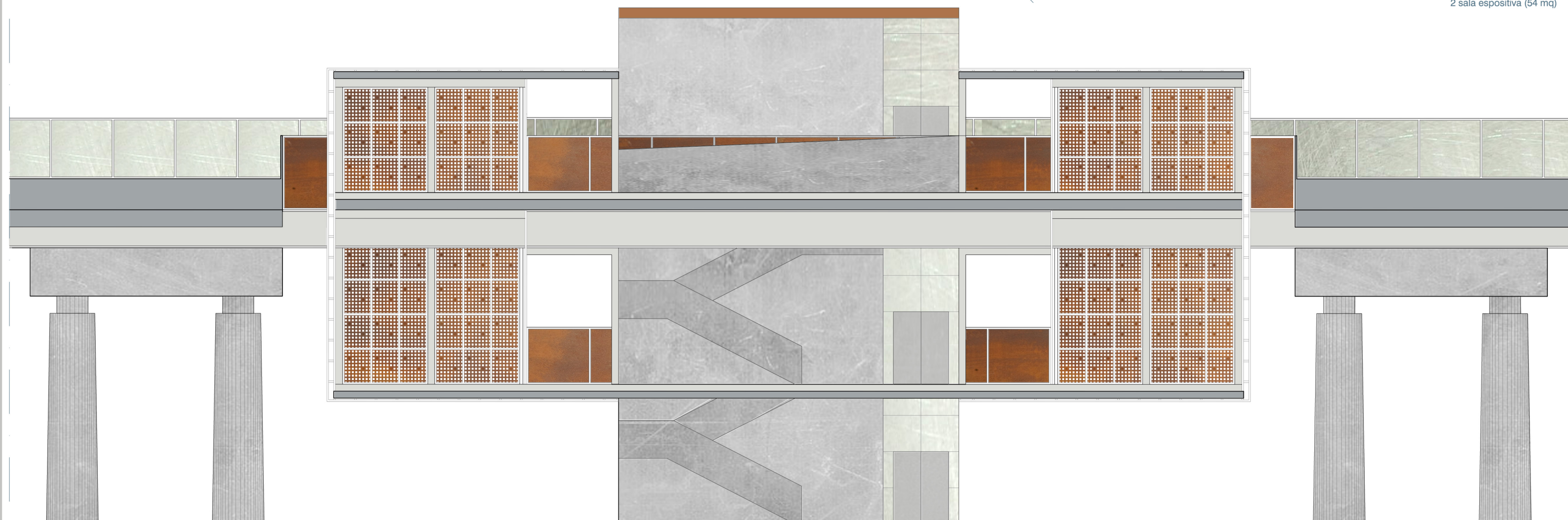




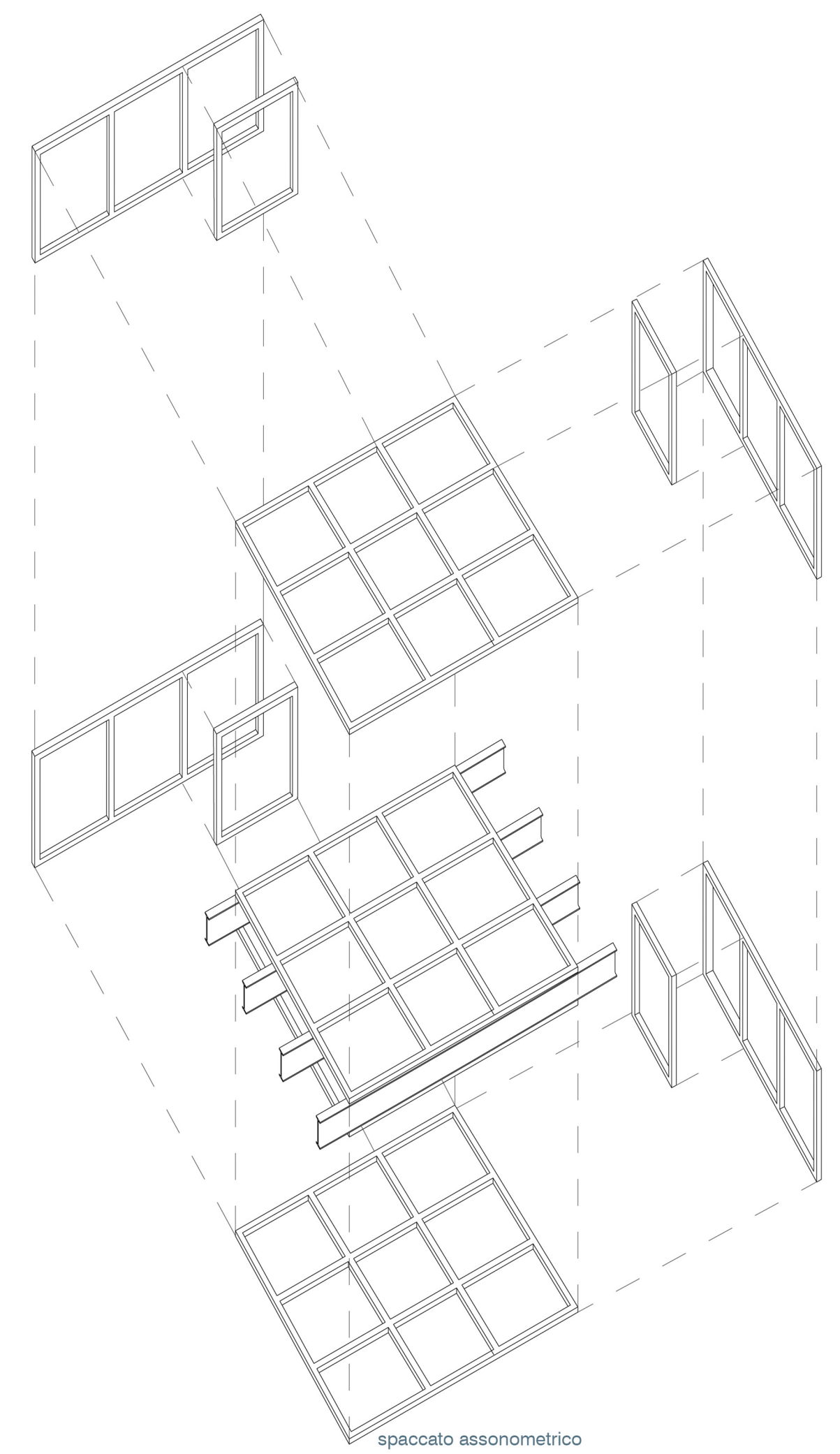
Sezione longitudinale A-A



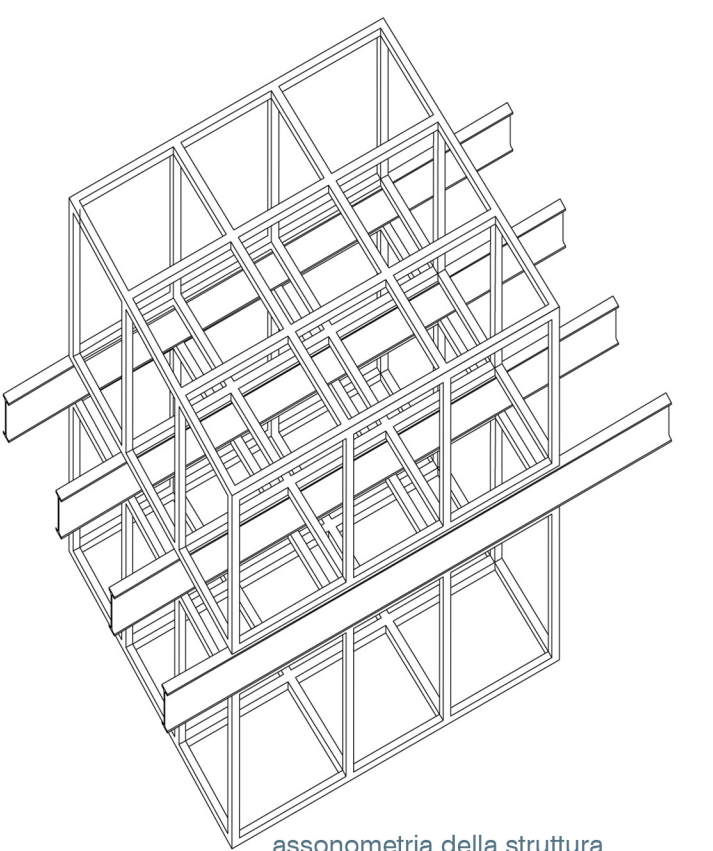
pianta alla quota +11.00
1 percorso pedonale e ciclabile
2 sala espositiva (54 mq)



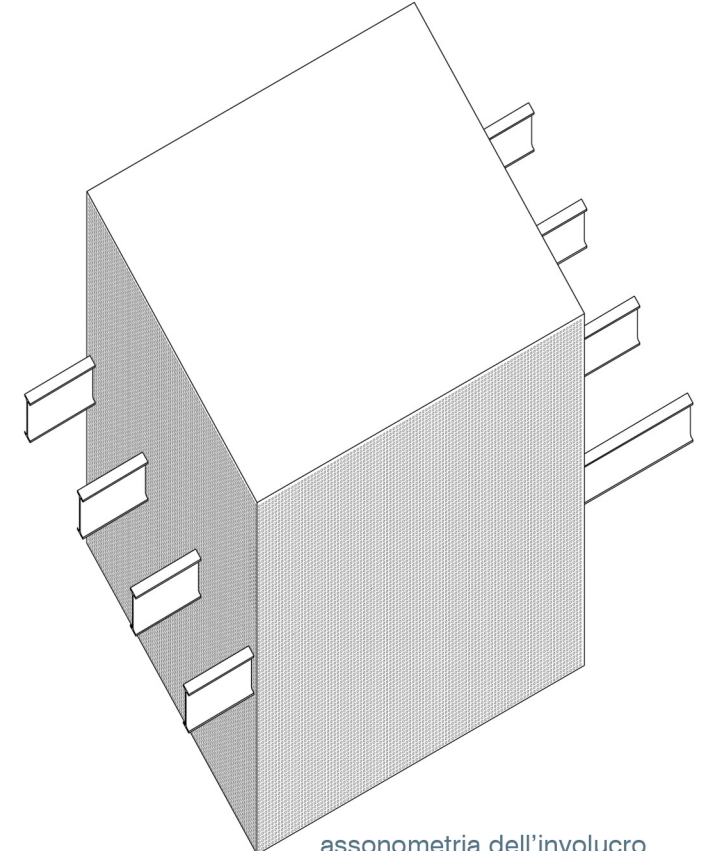
Sezione longitudinale B-B



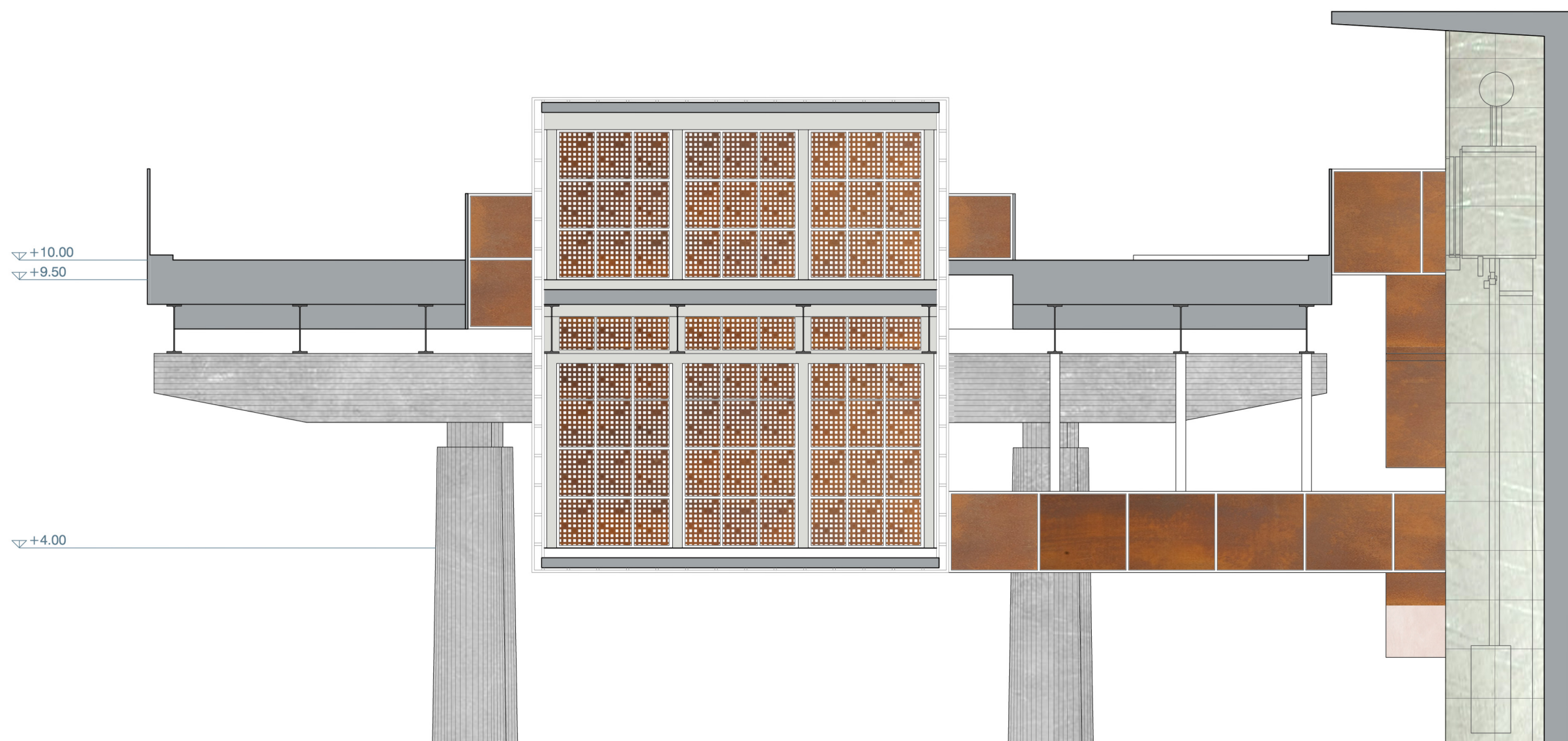
spaccato assonometrico



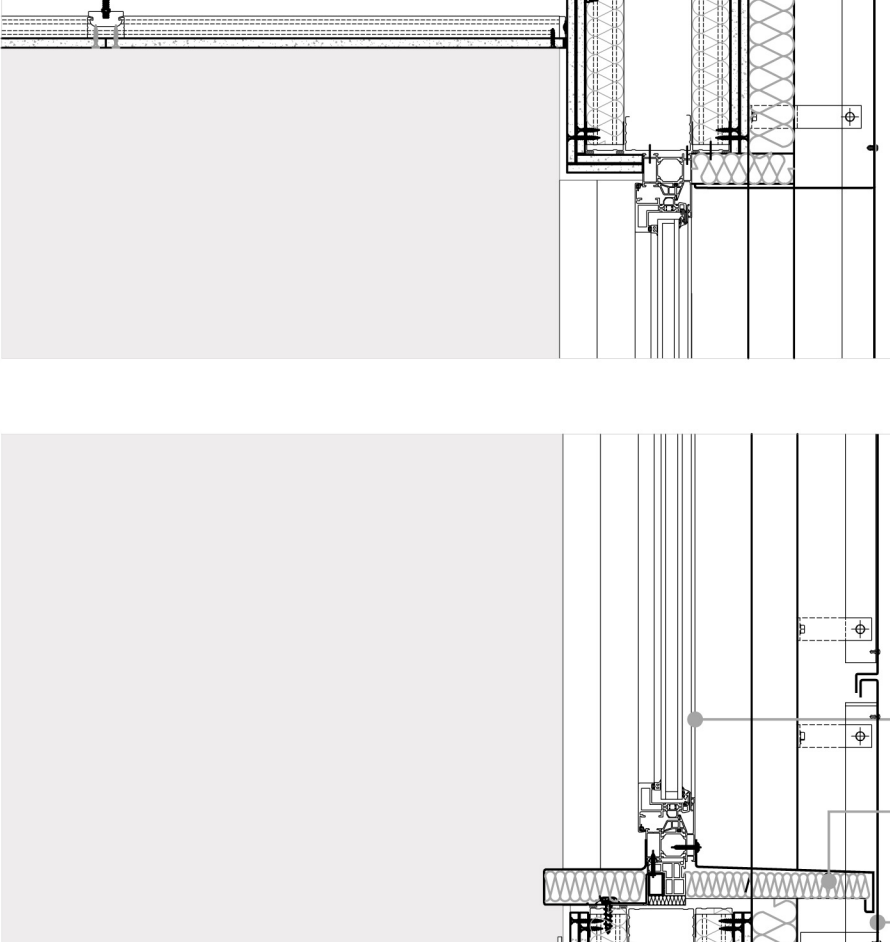
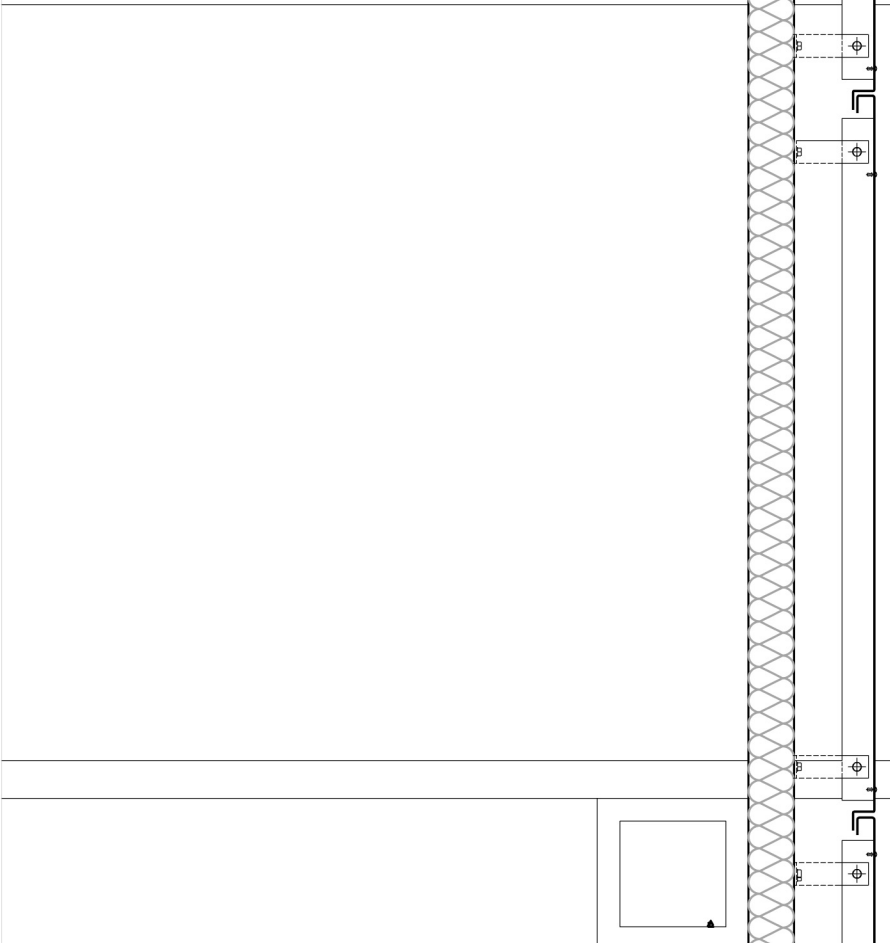
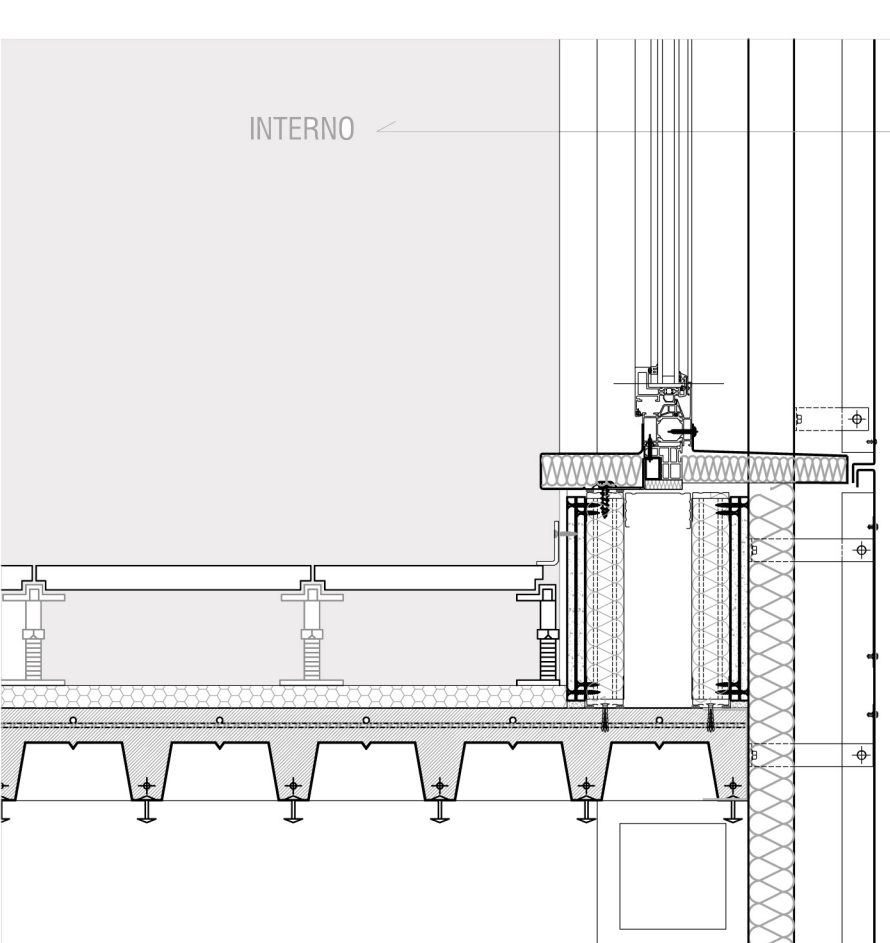
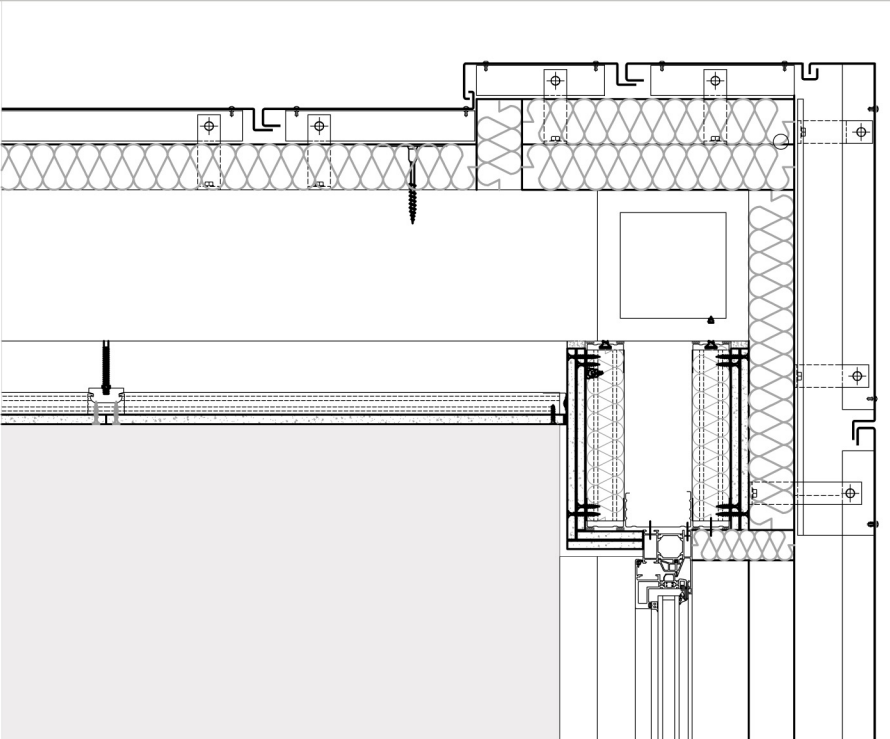
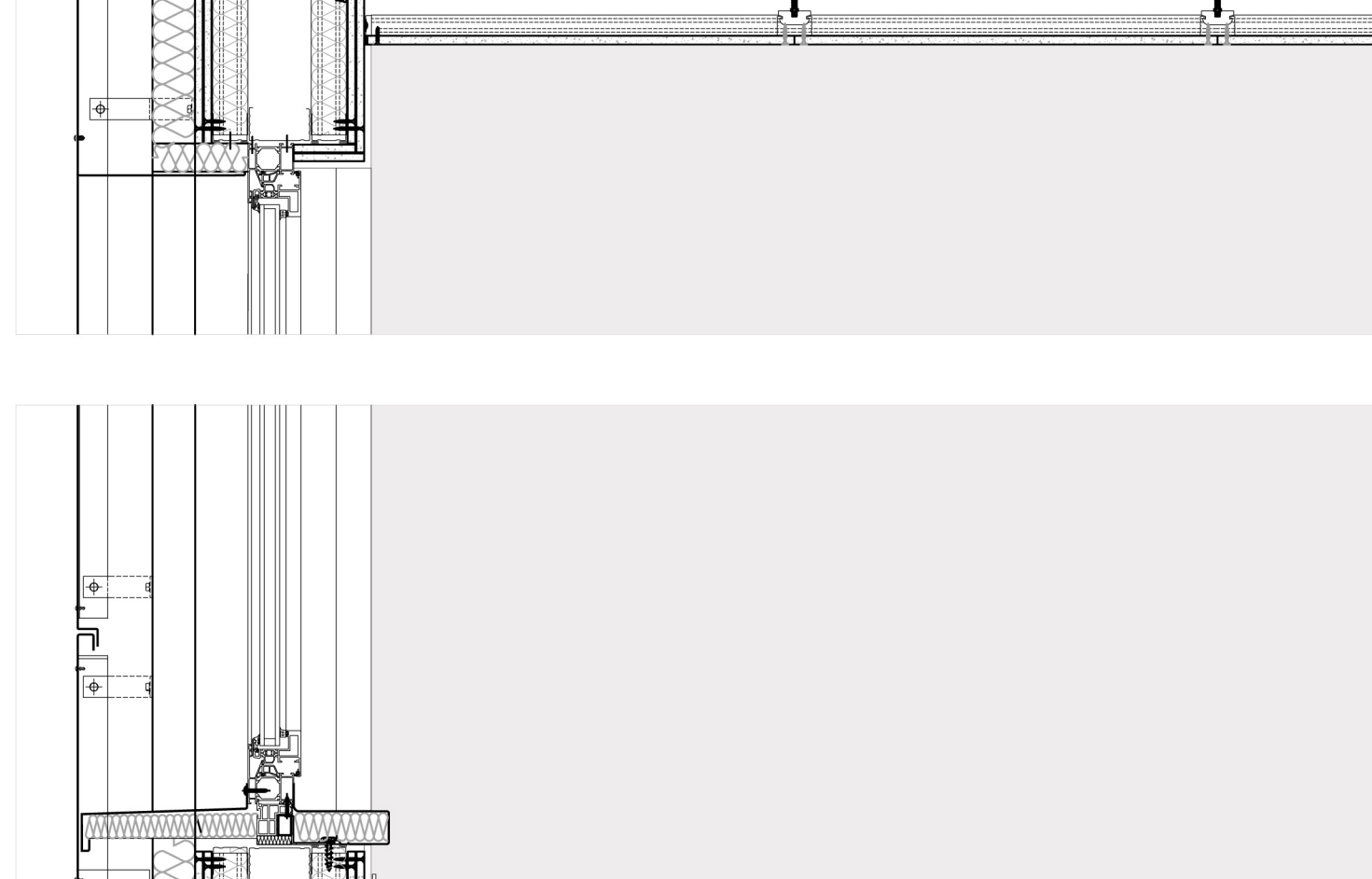
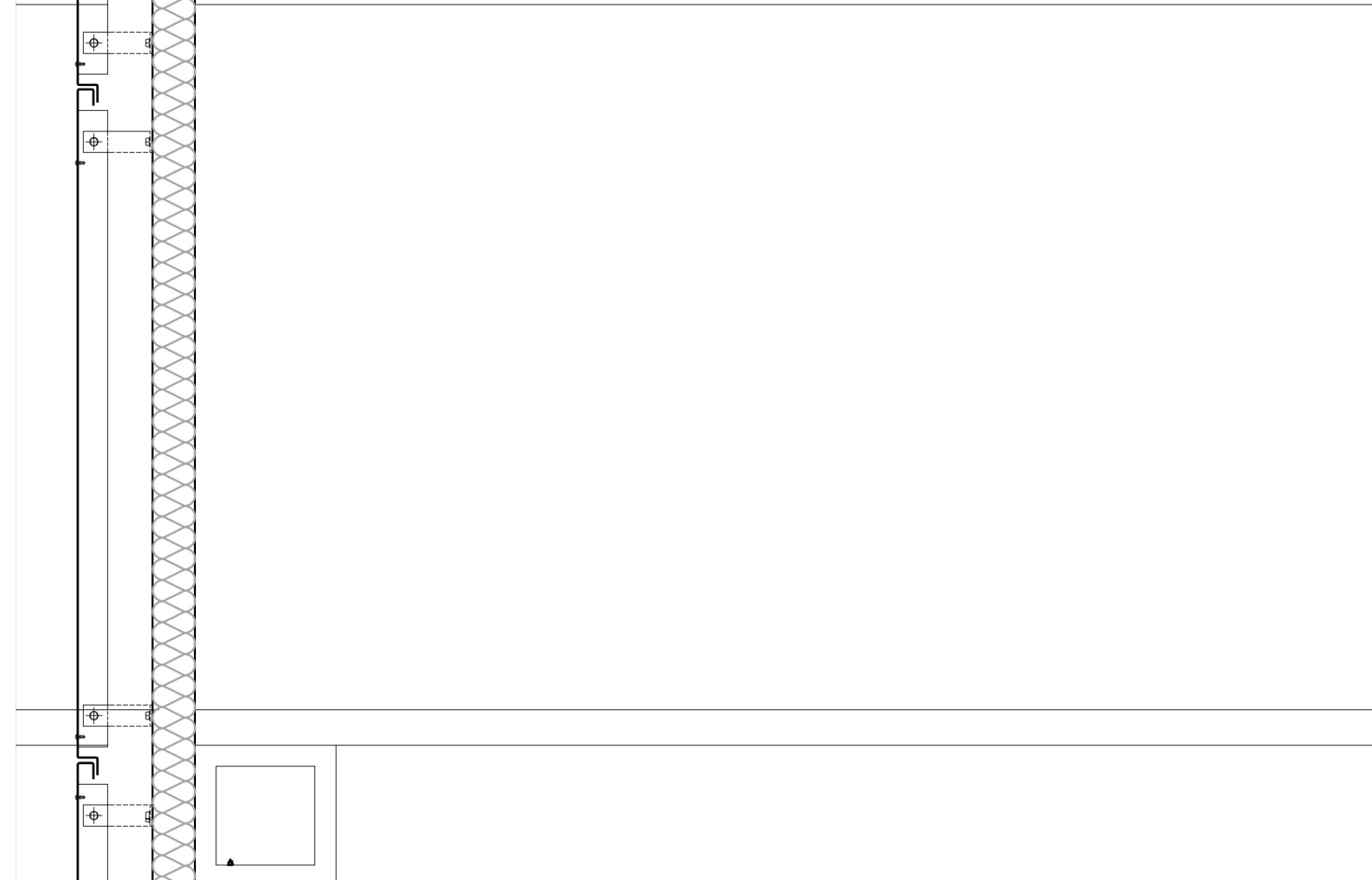
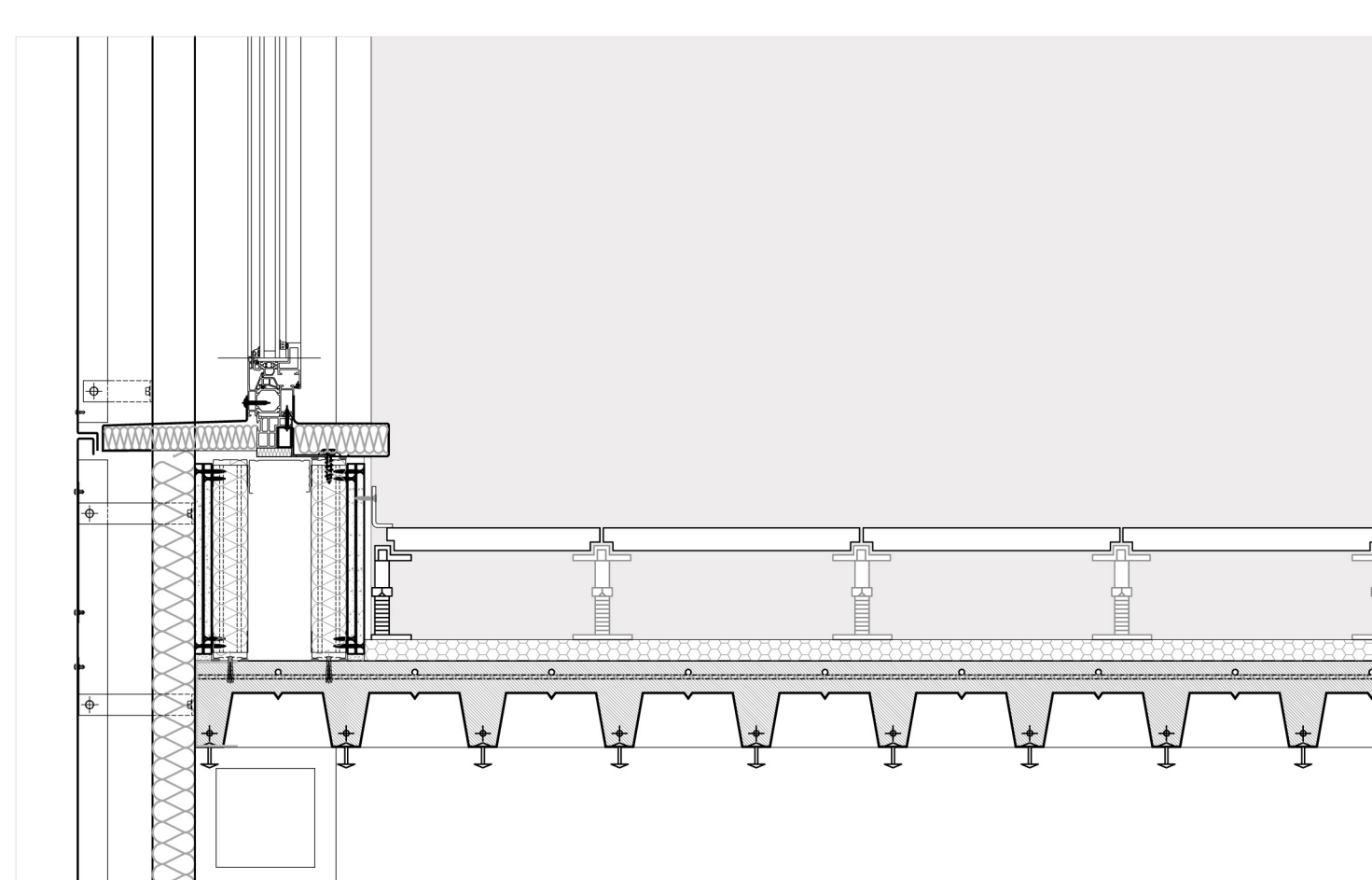
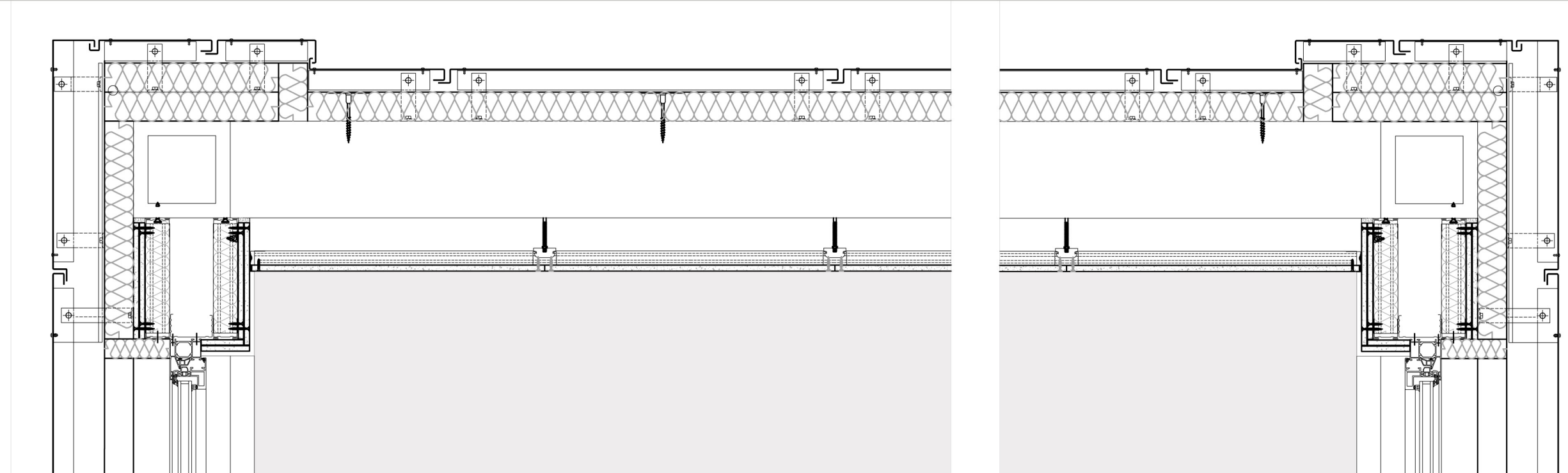
assonometria della struttura



assonometria dell'involucro



Sezione trasversale C-C



- Finestra ad alto isolamento Shuco AWS 65
- Soglia esterna in lamiera di metallo sp. 3 mm isolata con schiuma espansa
- Pannello di rivestimento tipo Alucobond sp. 3 mm color grigio antracite 105
- Montante ad omega per pannello rivestito tipo Alucobond
- Profilo ad U ad uguali tipo la nuova Ediffer 60*120*60 mm
- Soletta collaborante sp. 50 mm
- Rete elettrosaldata
- Stato di connessione sp. 100 mm
- Lamiera grecata tipo Solac 75
- Trave principale scatolare 200
- Trave secondaria scatolare 200
- Pannello semirigido in lana di roccia tipo Rockwool Frontrock Max E sp. 60 mm

particolare tecnologico

