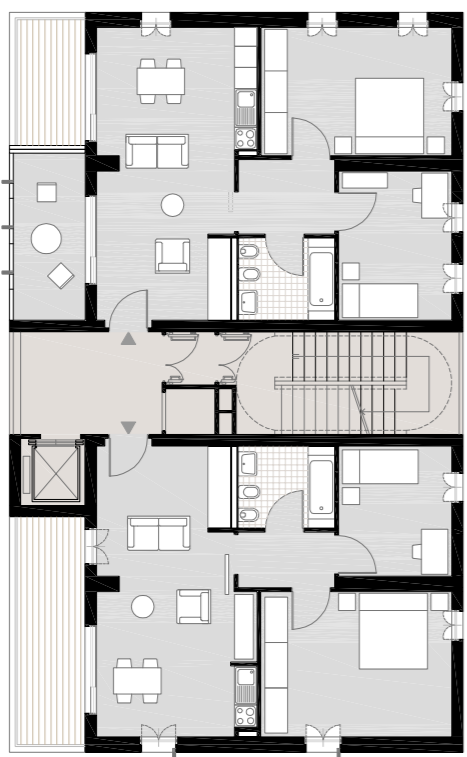


Disposizione moduli umidi:  
bagni e cucine

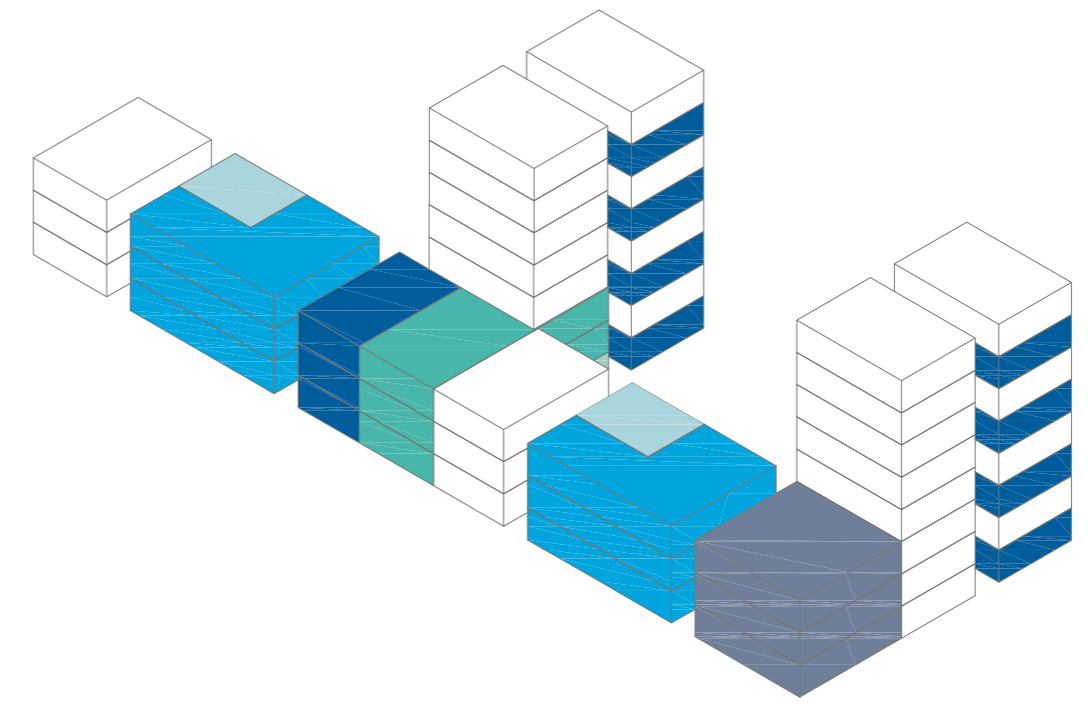
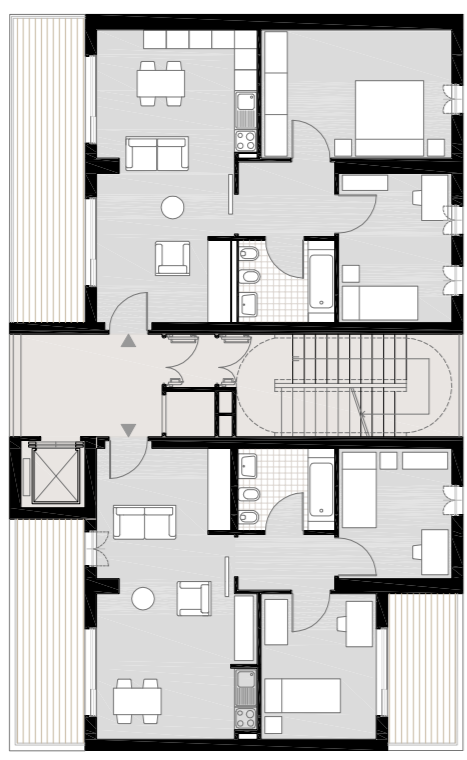
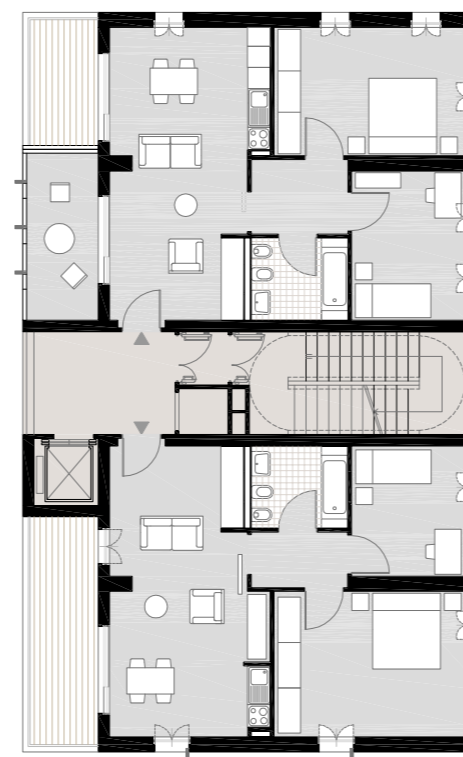


Piano tipo edificio blocco B

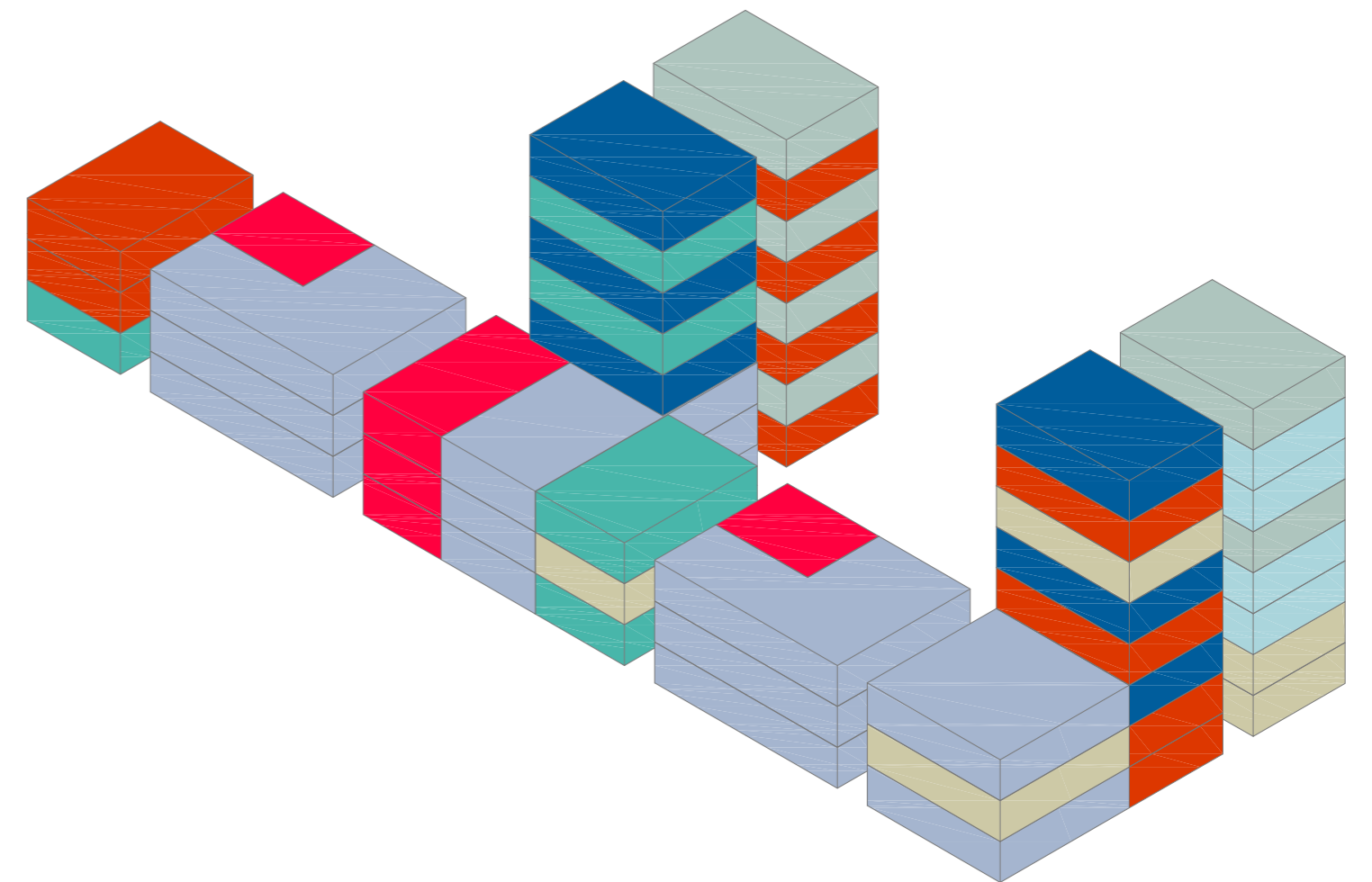
Torre 2, piani successivi



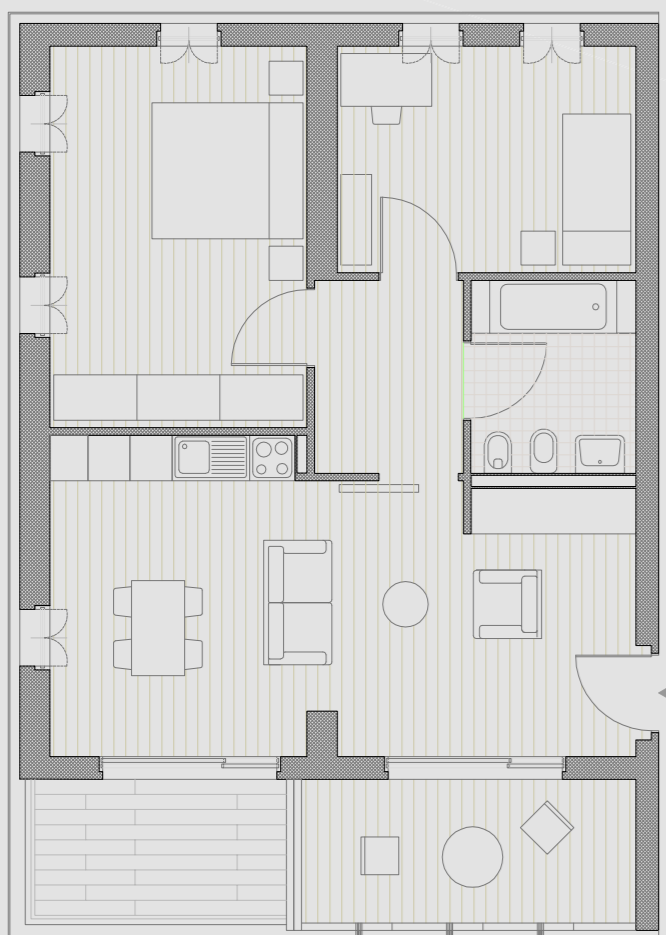
Torre 3, piani successivi



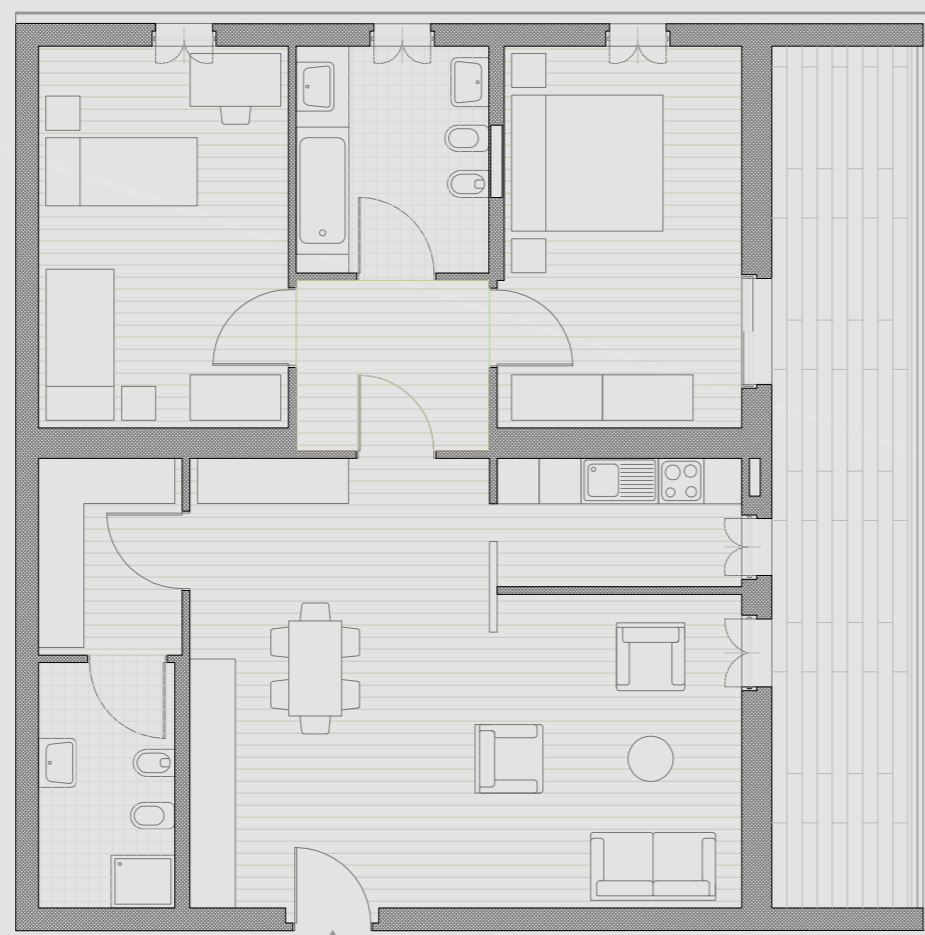
- 40 mq
- 60 mq
- 70 mq
- 90 mq
- 120 mq
- 150 mq



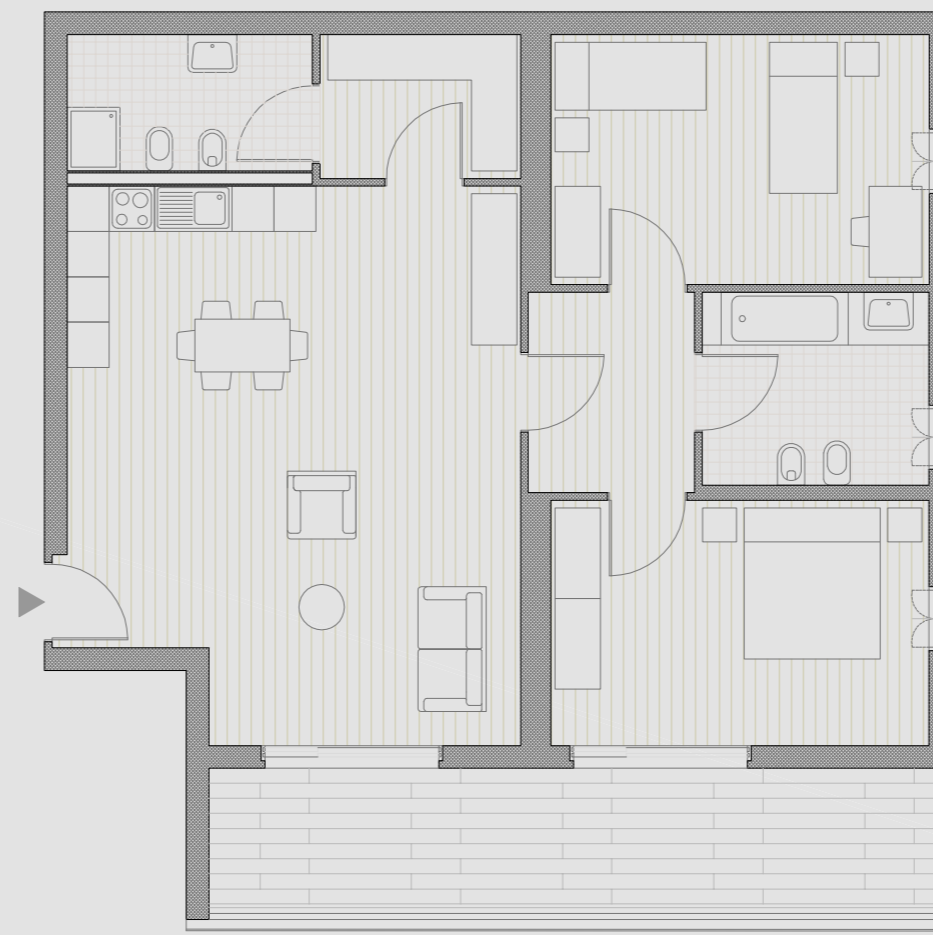
- coppia, 5 unità
- zona comune
- anziani, 4 unità
- famiglia, 10 unità
- famiglia numerosa, 12 unità
- casa\_lavoro, 5 unità
- casa\_assistenza anziani, 6 unità
- single, 10 unità
- studenti, 6 unità



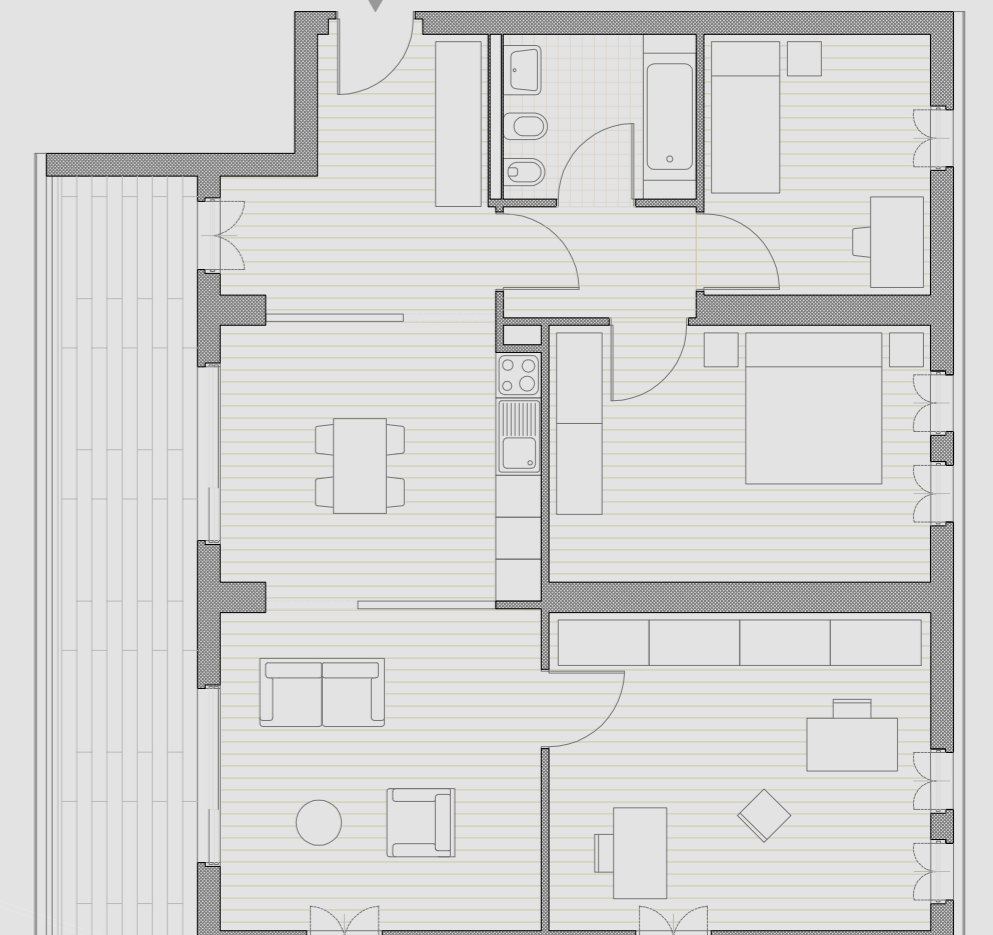
70 mq, famiglia con 1 bambino, spazio cottura  
trilocale



90 mq, famiglia con 2 bambini, cucina abitabile  
quadrilocale



90 mq, famiglia con 2 bambini, cucina abitabile  
trilocale



90 mq, casa\_lavoro  
quadrilocale

