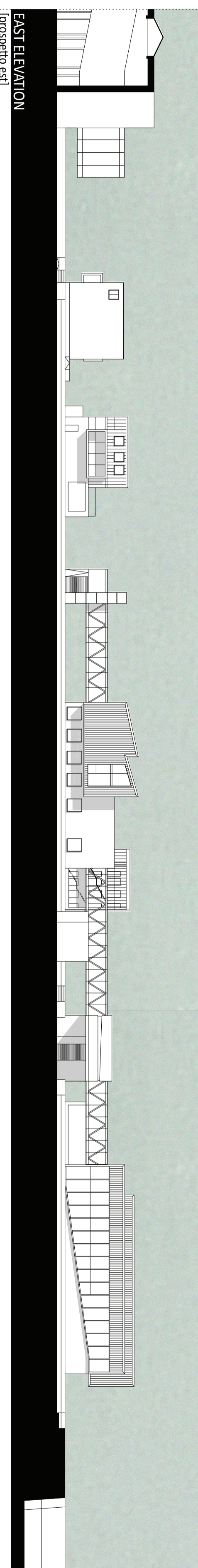




GENERAL PLAN  
reference height +1,20m  
[attacco a terra]  
[quota di riferimento +1,20m]

PROGRAM  
[programmata]

HOUSING BLOCKS edifici residenziali	33%
ROW HOUSES case a schiera	27%
CO HOUSING	15%
RETAIL/ SERVICES commerciale/ servizi	13%
BOOKSHOP libreria	9%
NURSERY asilo	3%



SOUTH ELEVATION  
[prospetto sud]

