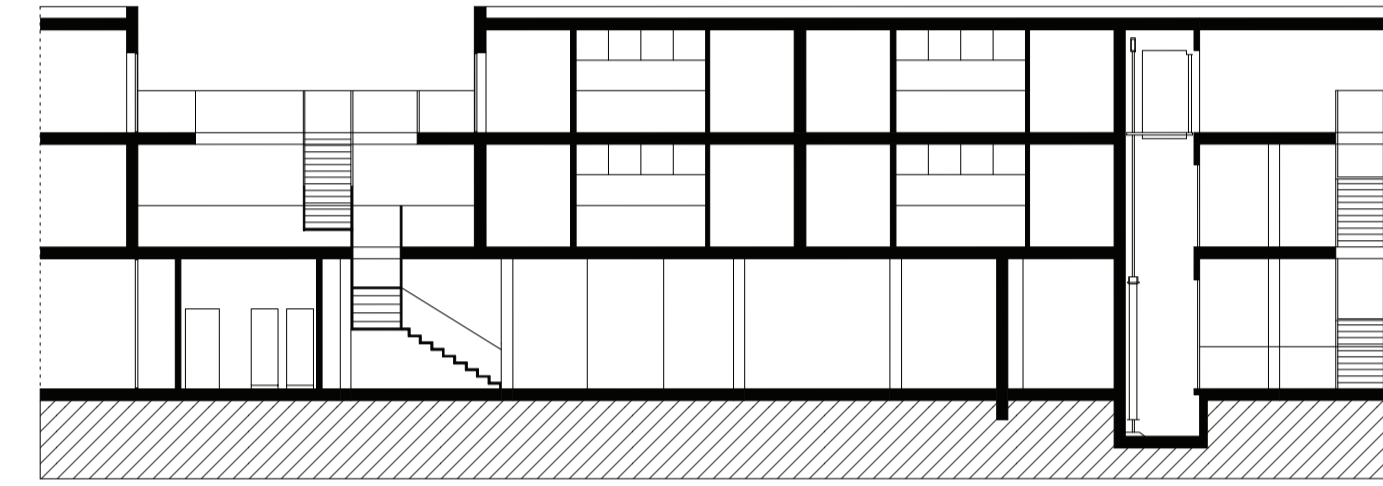
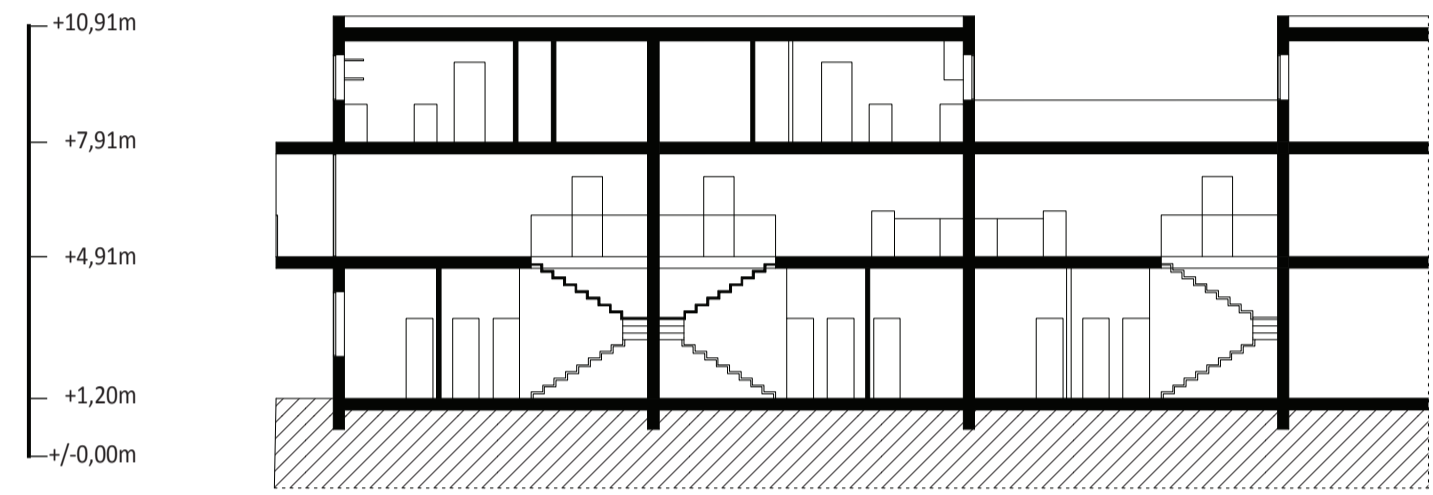
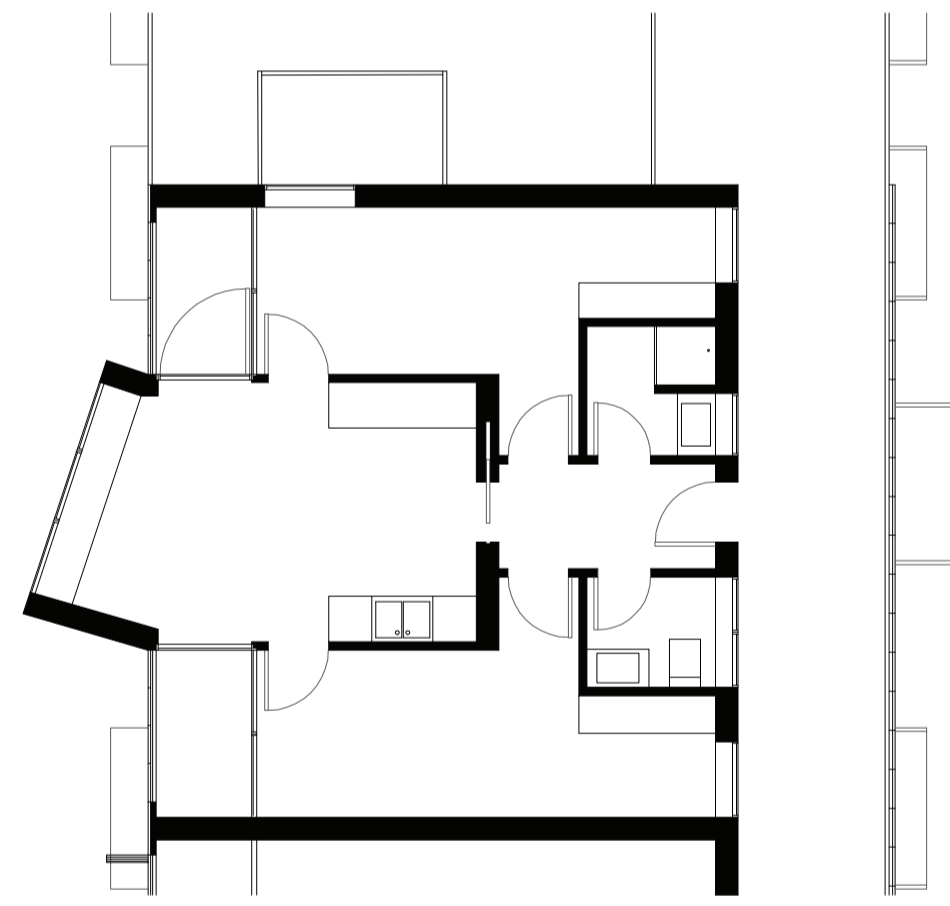


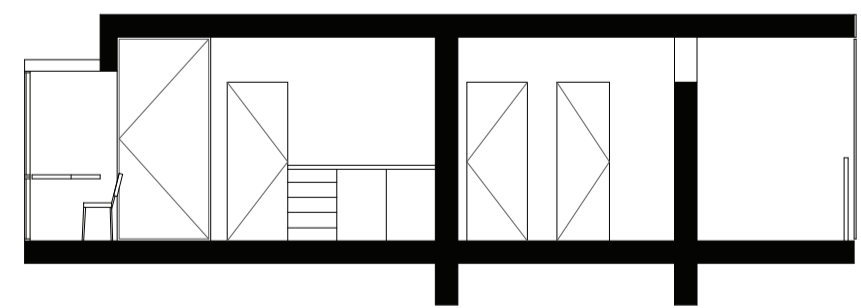
+10,91m
+7,91m
+4,91m
+1,20m
+/-0,00m
SECTION AA'
[sezione BB']



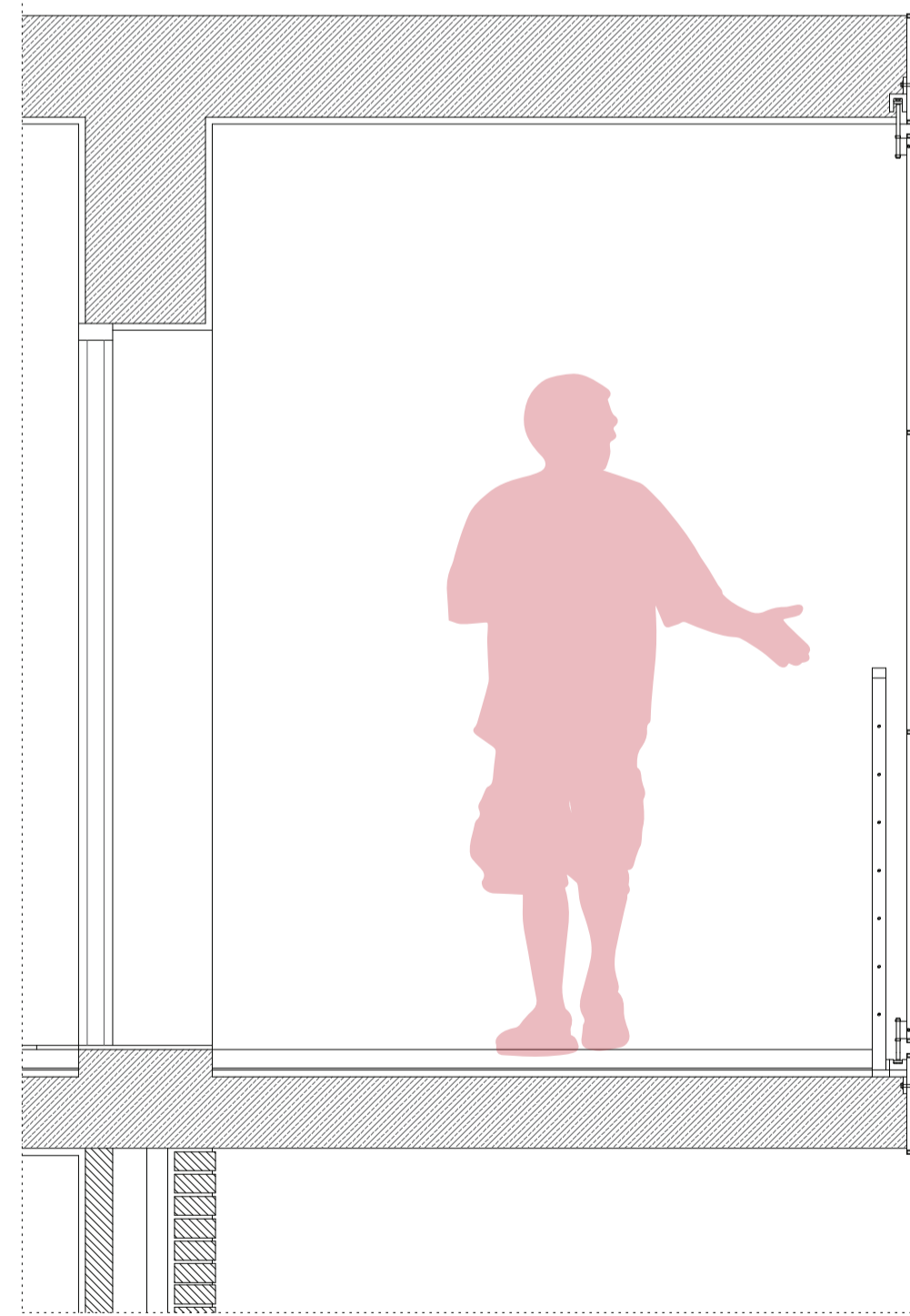
+10,91m
+7,91m
+4,91m
+1,20m
+/-0,00m
SECTION BB'
[sezione BB']



COHOUSING PLAN
[cohousing pianta]
1:100



COHOUSING SECTION
[cohousing sezione]
1:100



- FIXED METAL MEMBRANE 76x150x3 cm 15.
 - UPN 140 14.
 - WIRE ROPE FENCE 13.
 - DOUBLE GLAZING SLIDING WINDOW 9 cm 12.
 - MOBILE MEAL MEMBRANE 50x268x3 cm 11.
 - SLIDING SYSTEM 10.
 - FIXED METAL MEMBRANE 50x28x3 cm 9.
 - METALLIC GRID 5 cm 8.
 - SQUARE SECTION STEEL SUBSTRUCTURE 5x5 cm 7.
 - EXPOSED BRICKWORK 25x12,5x5 cm 6.
 - ROUHGCAST 2 cm 5.
 - WOOD PULP INSULATION 6 cm 4.
 - AIR SPACE 10 cm 3.
 - AIR BRICKS 8 cm 2.
 - FINISHING PLASTER 2 cm 1.
- membrana metallica fissa 76x150x3 cm 15.
 - UPN 140 14.
 - parapetto in cavi metallici 13.
 - porta finestra scorrevole doppio vetro 9 cm 12.
 - membrana metallica mobile in lamiera striata 50x268x3 cm 11.
 - sistema di scorrimento 10.
 - membrana metallica fissa 50x28x3 cm 9.
 - griglia metallica 5 cm 8.
 - struttura in profili di acciaio a sezione quadrata 5x5 cm 7.
 - mattoni a vista 25x12,5x5 cm 6.
 - intonaco rustico 2 cm 5.
 - isolante termico in cellulosa di legno 6 cm 4.
 - camera d'aria 10 cm 3.
 - mattoni forati 8 cm 2.
 - intonaco di finitura 1.
- FAÇADE DETAIL 1:20
[dettaglio della facciata 1:20]