

UN SENTIERO NELL'ENTUSIASMO PER SEINÄJOKI



1. COMMUNITY CENTER
2. EDIFICIO DELL'AMMINISTRAZIONE PUBBLICA
3. PARRADISO / ACCESSO + TORRE DI OTTERVAZIONE
4. MUNICIPIO
5. TEATRO
6. BIBLIOTECA MULTIMEDIA
7. NUOVA BIBLIOTECA
8. CENTRO PARROCCHIALE
9. CHEZ LA KEDEN RÖYTI
10. TORRE CAMPANARIA
11. ISTITUTO PROFESSIONALE
12. PIAZZA DI BETULLE
13. PIAZZA MULTIMEDIA
14. ACCESSO PARCHEGGIO "INTERNO"
15. PISTA DI PATTINAGGIO
16. BOZZETTO DI PIC-NIC
17. FERMATA BIBLIOSUI

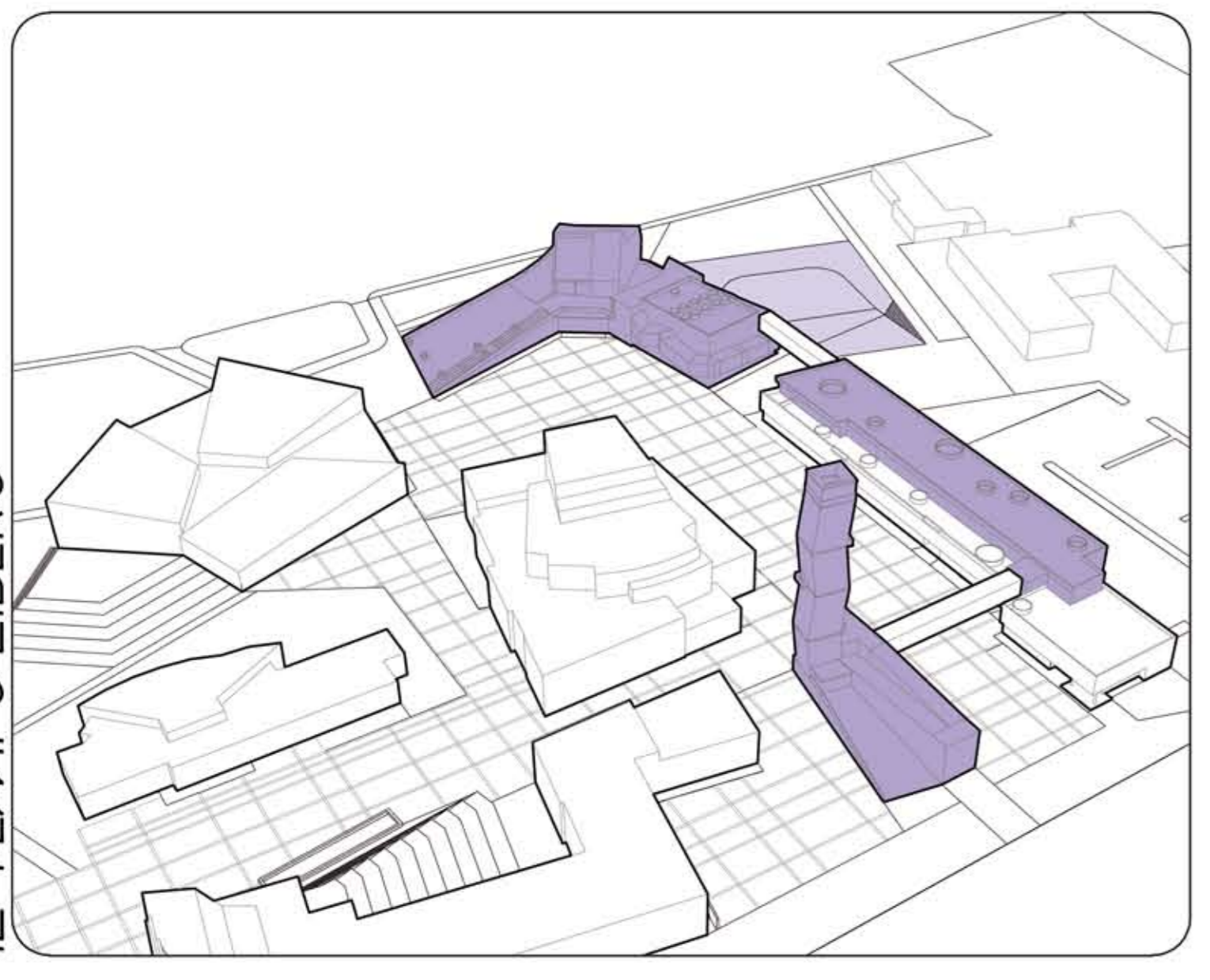
PLANIMETRIA GENERALE
 (SCALA 1:5000)
 NORD

TAVOLA 1
 IL PROGETTO

UNIVERSITÀ
 NELL'ENTUSIASMO
 SEINÄJOKI

Relatore: Prof. Luigi Sobrero e Prof. Olli-Pekka Sopanen
 Collaboratori: Arch. Andrea Angeli
 Laboratorio: Niccolò Pizzoni Anno accademico 2011/2012

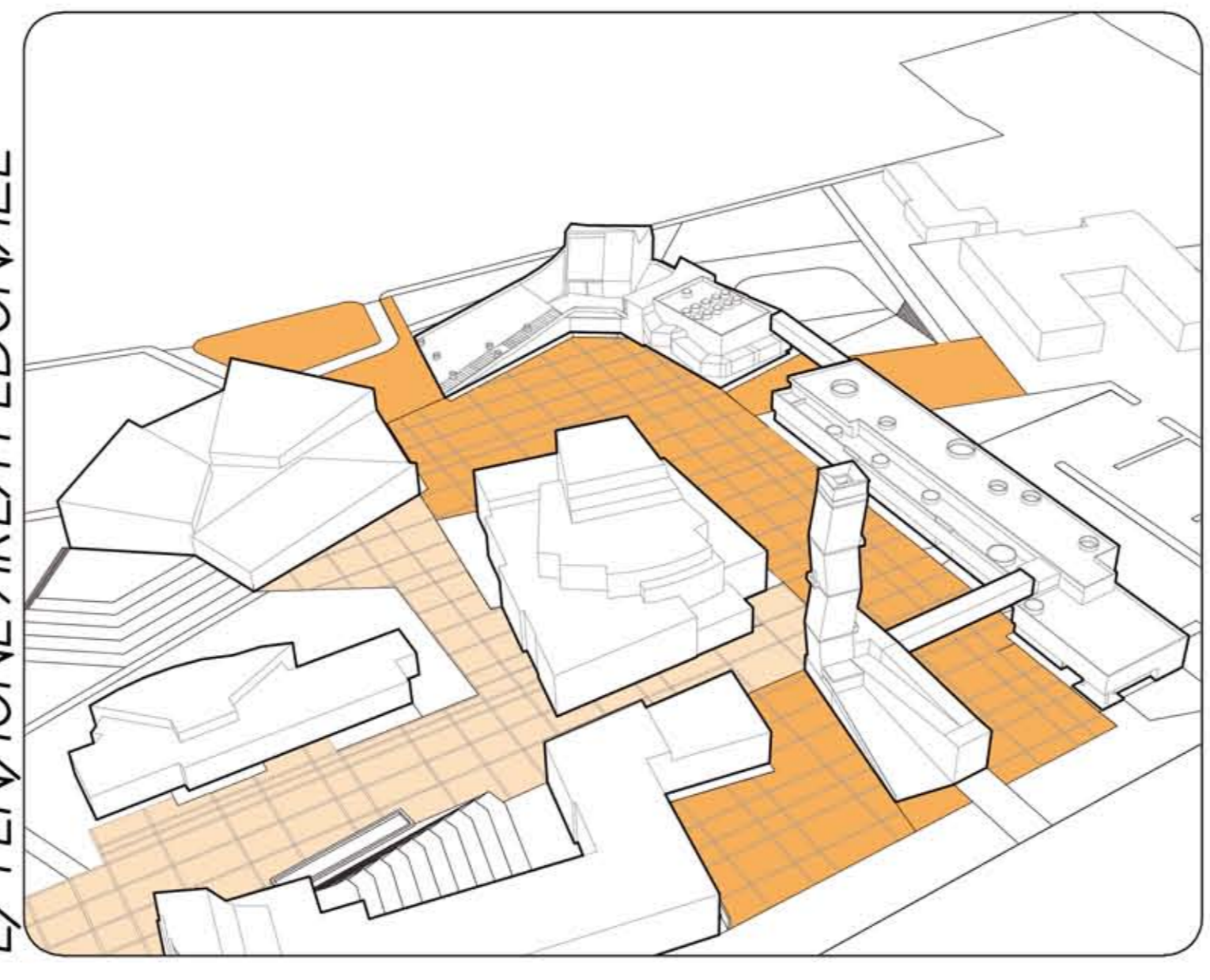
INFERIMENTO ATTIVITÀ PER IL TEMPO LIBERO



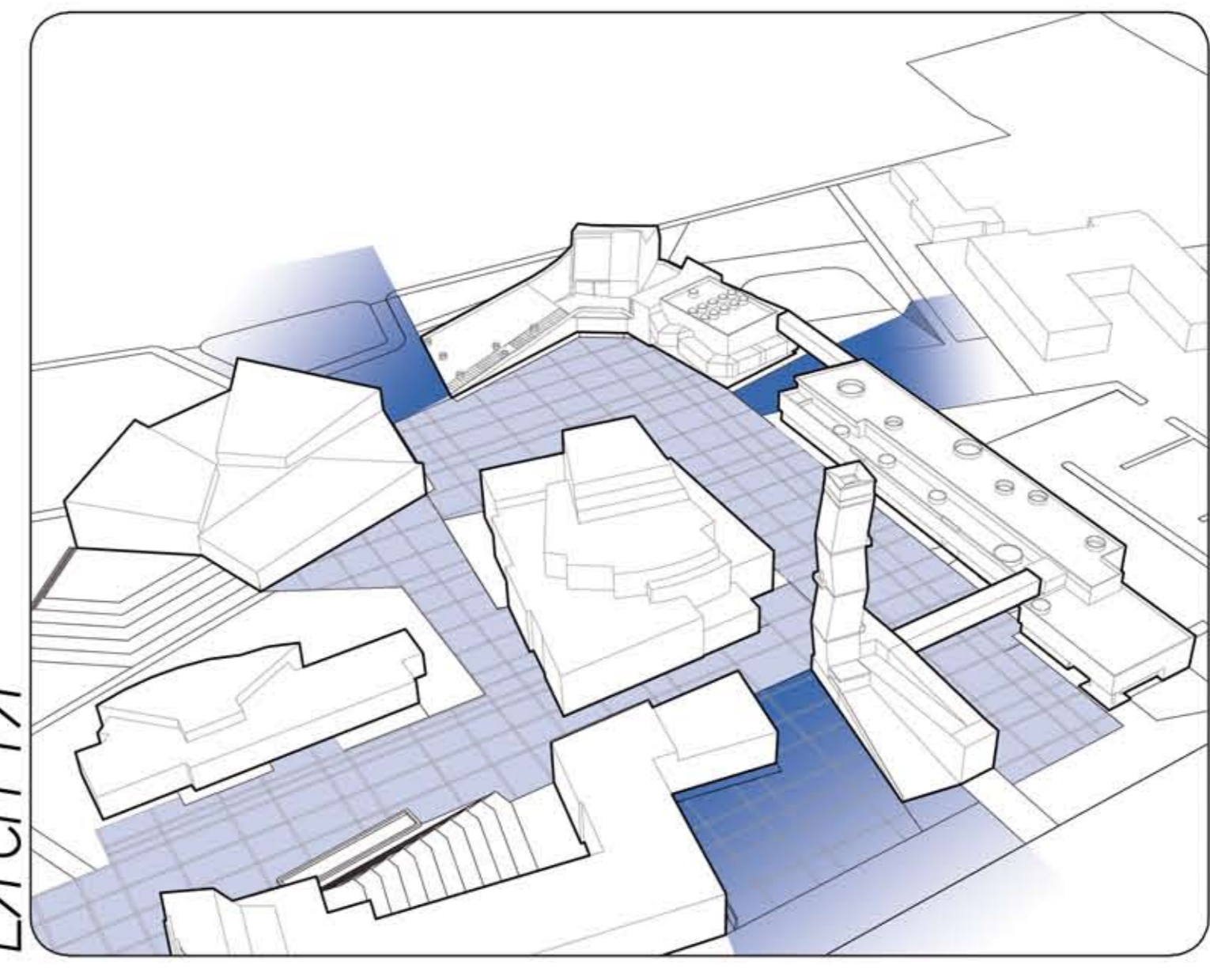
CONNESSIONI TRA GLI EDIFICI



ESTENSIONE AREA PEDONALE



CREAZIONI DI RELAZIONI CON LA CITTÀ

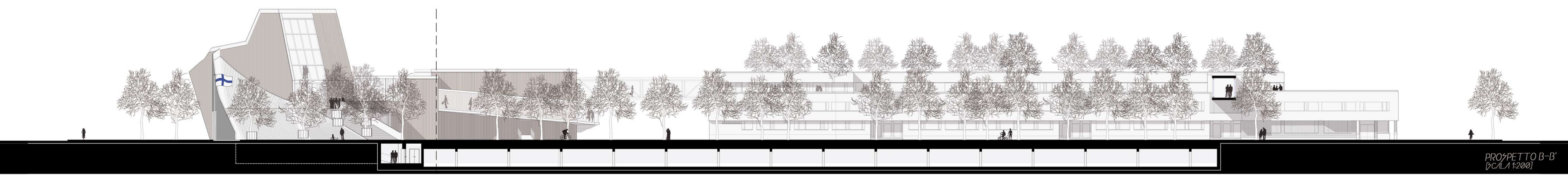


MODELLAZIONE DEL SUOLO

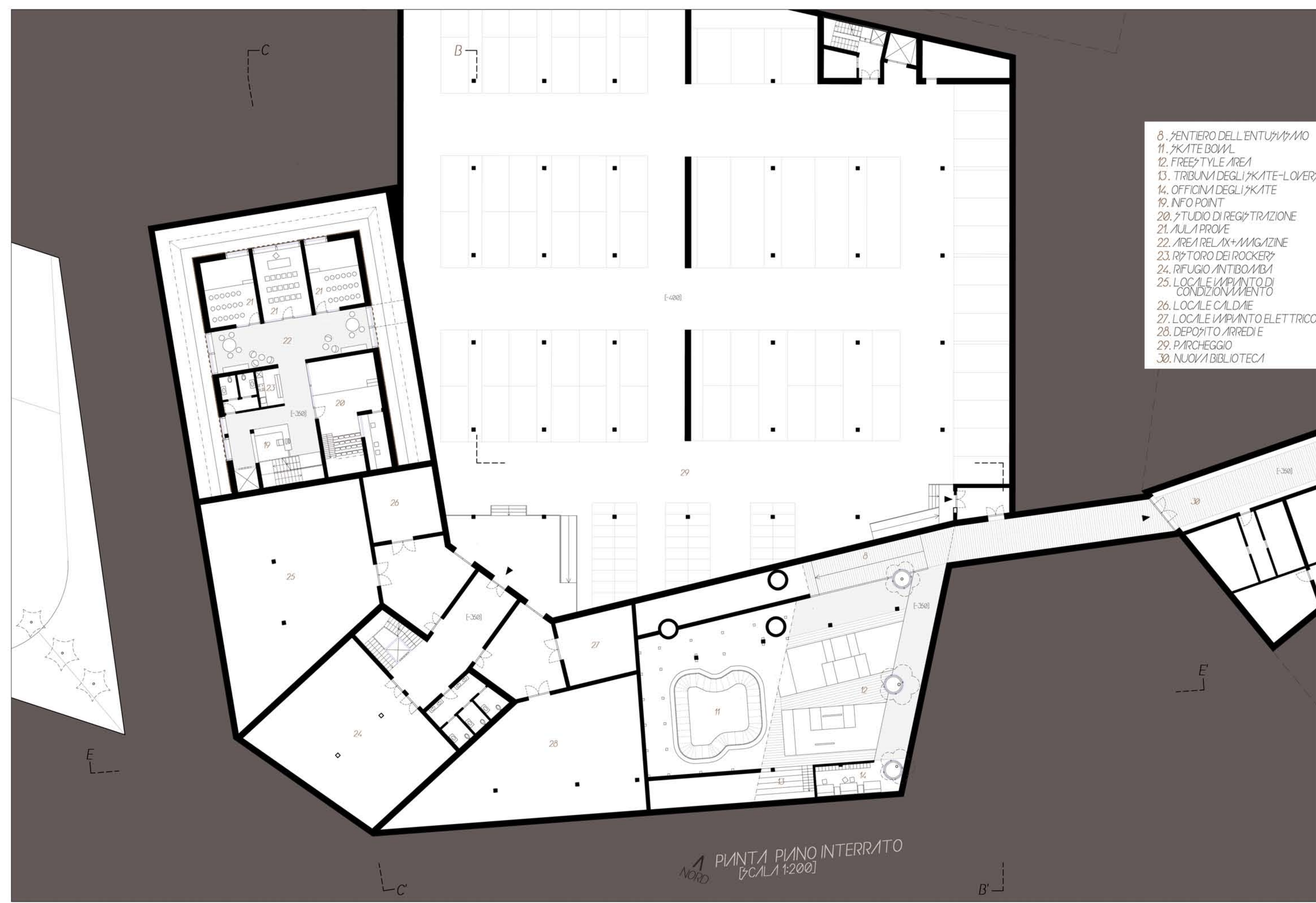
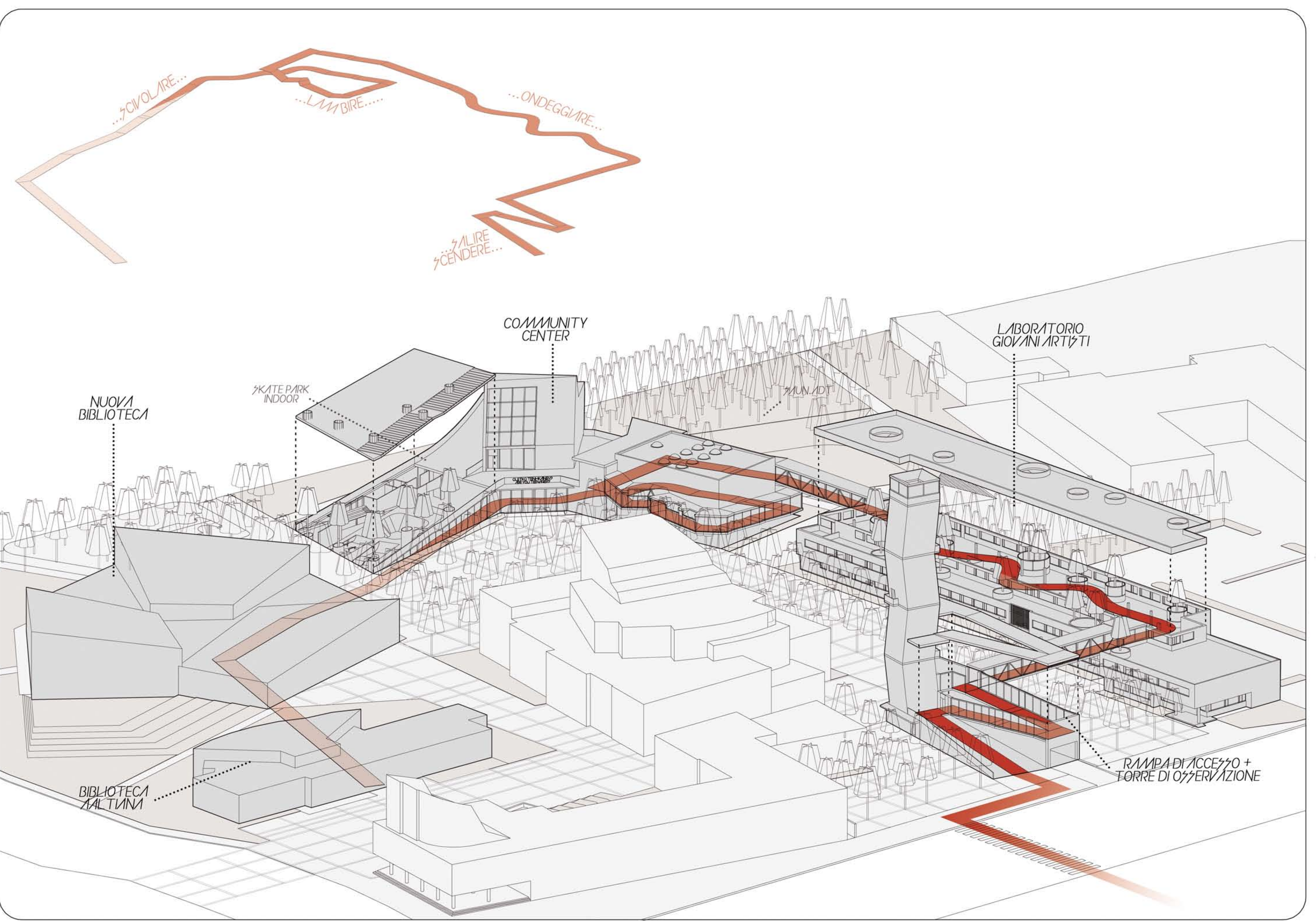


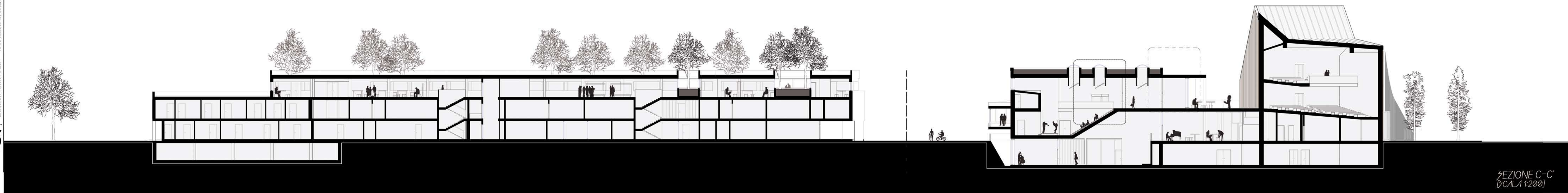


PROSPETTO A-A
 (SCALA 1:200)

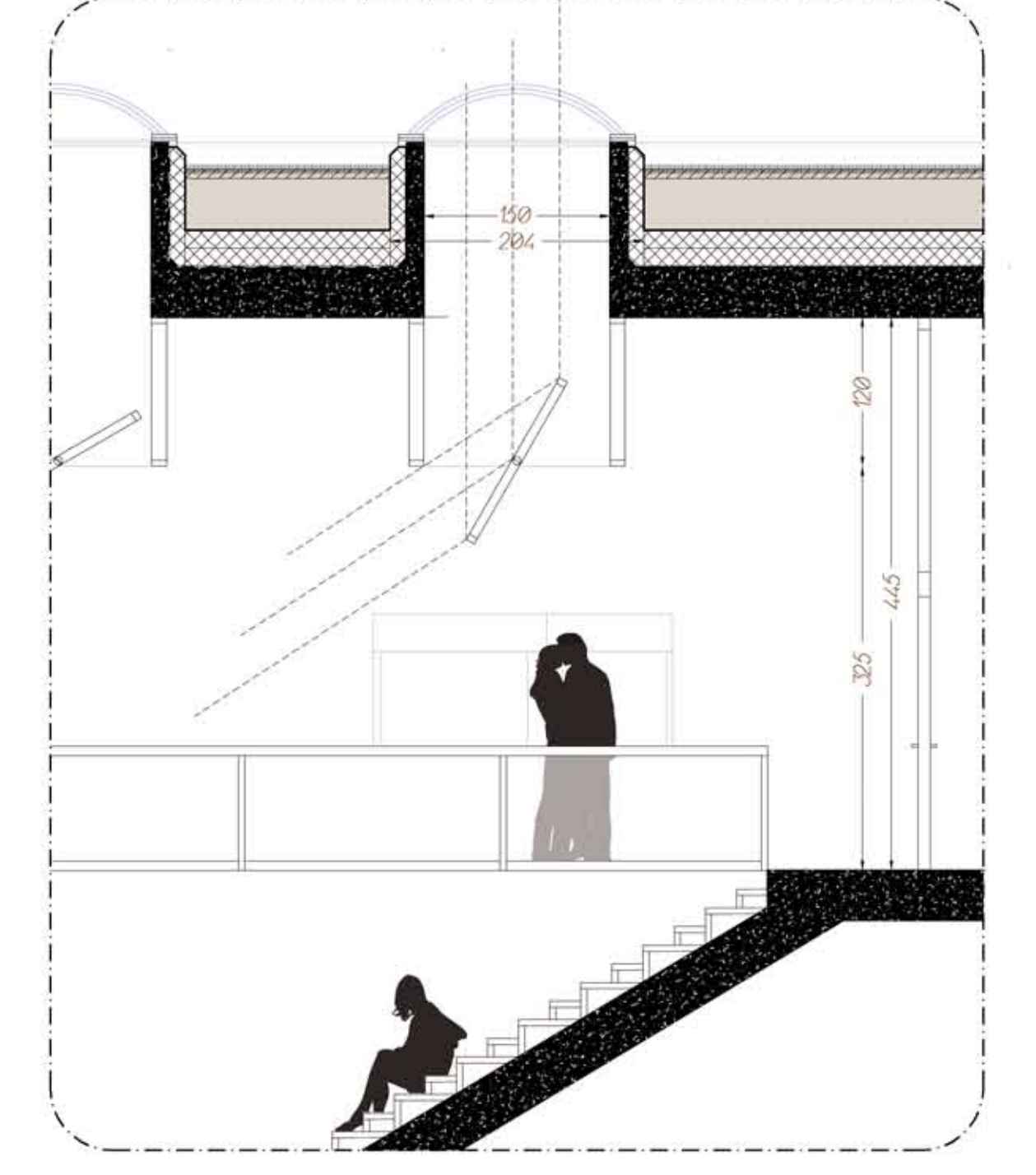
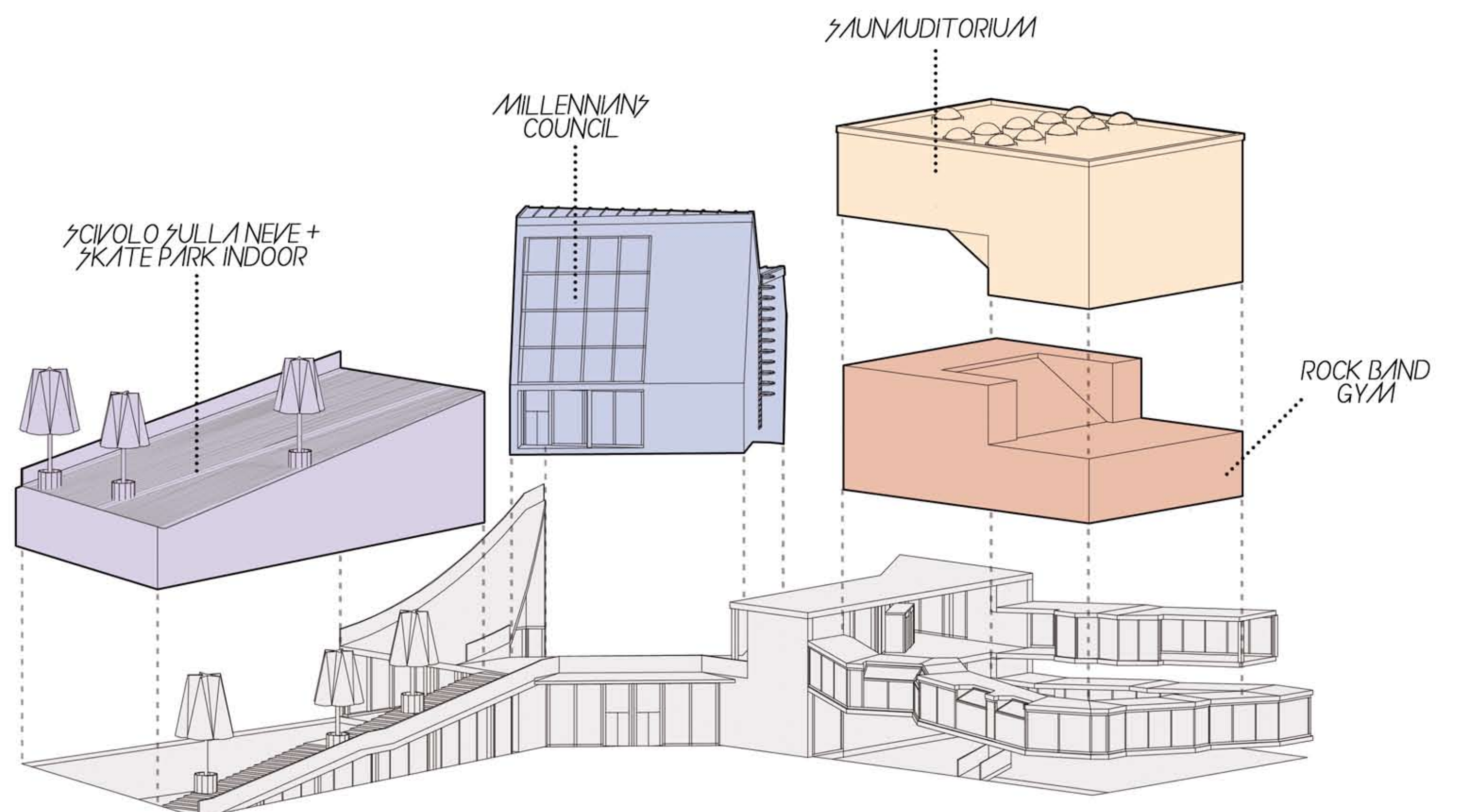


PROSPETTO B-B'
 (SCALA 1:200)





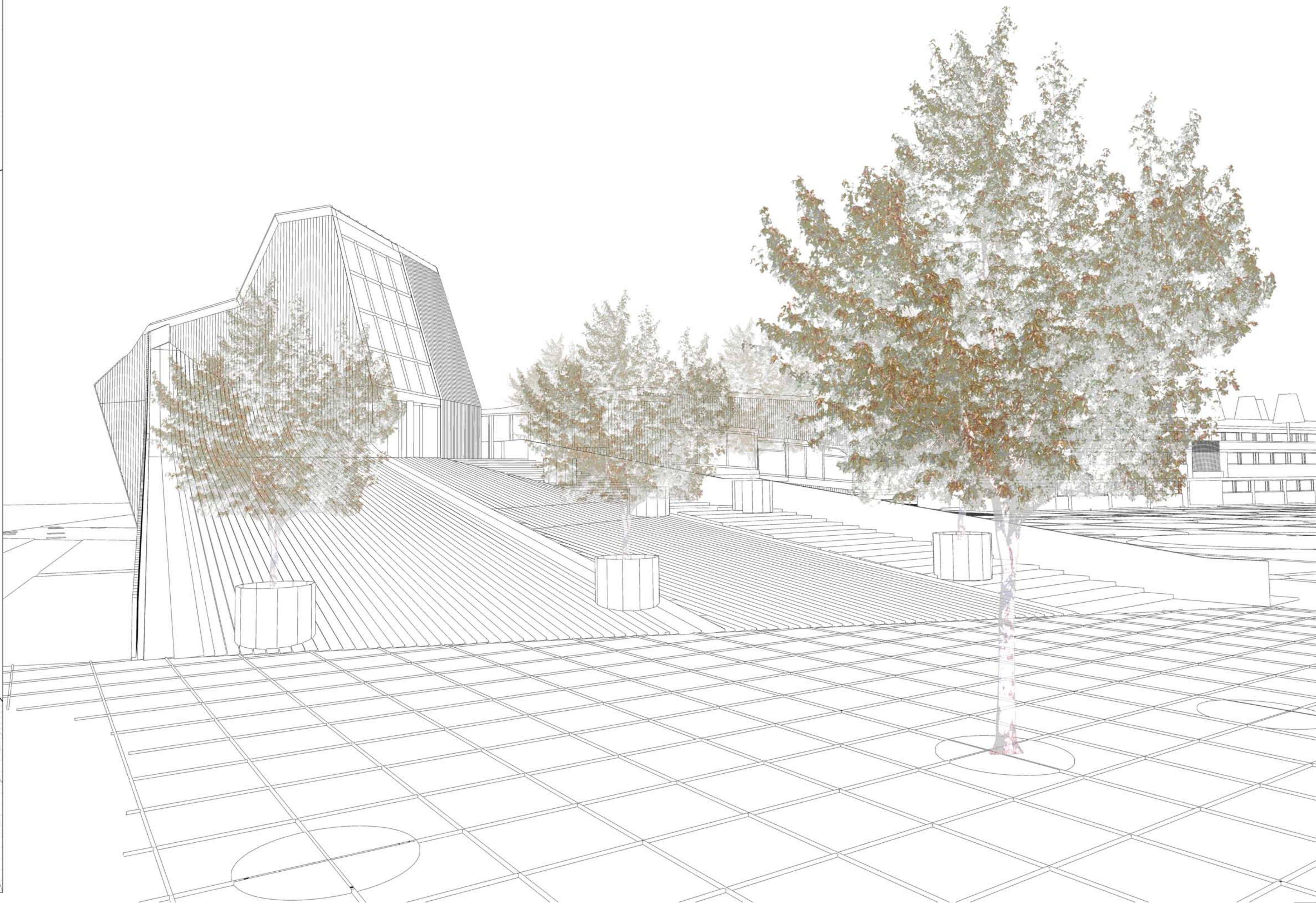
SEZIONE C-C
 [SCALA 1:200]

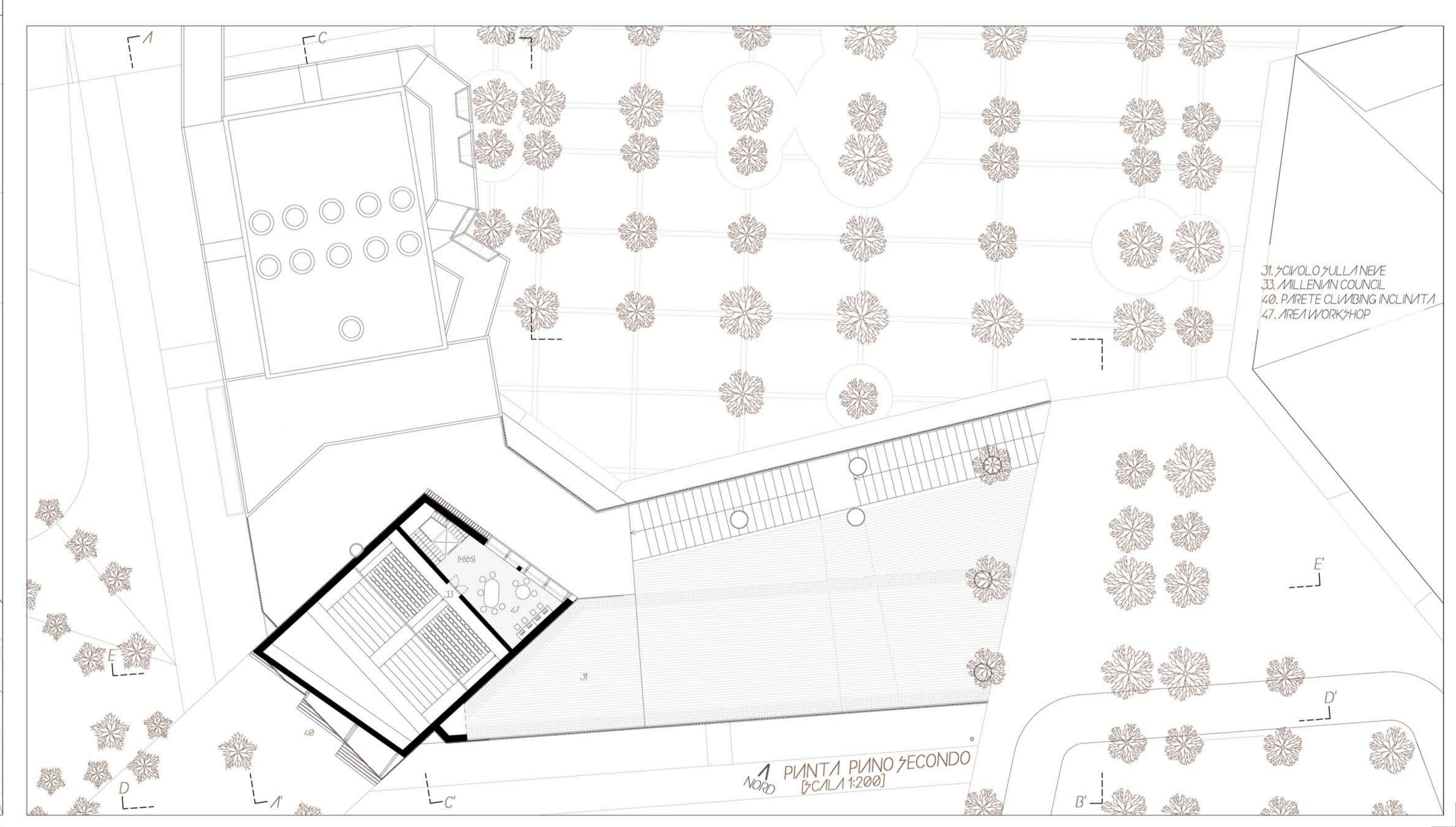
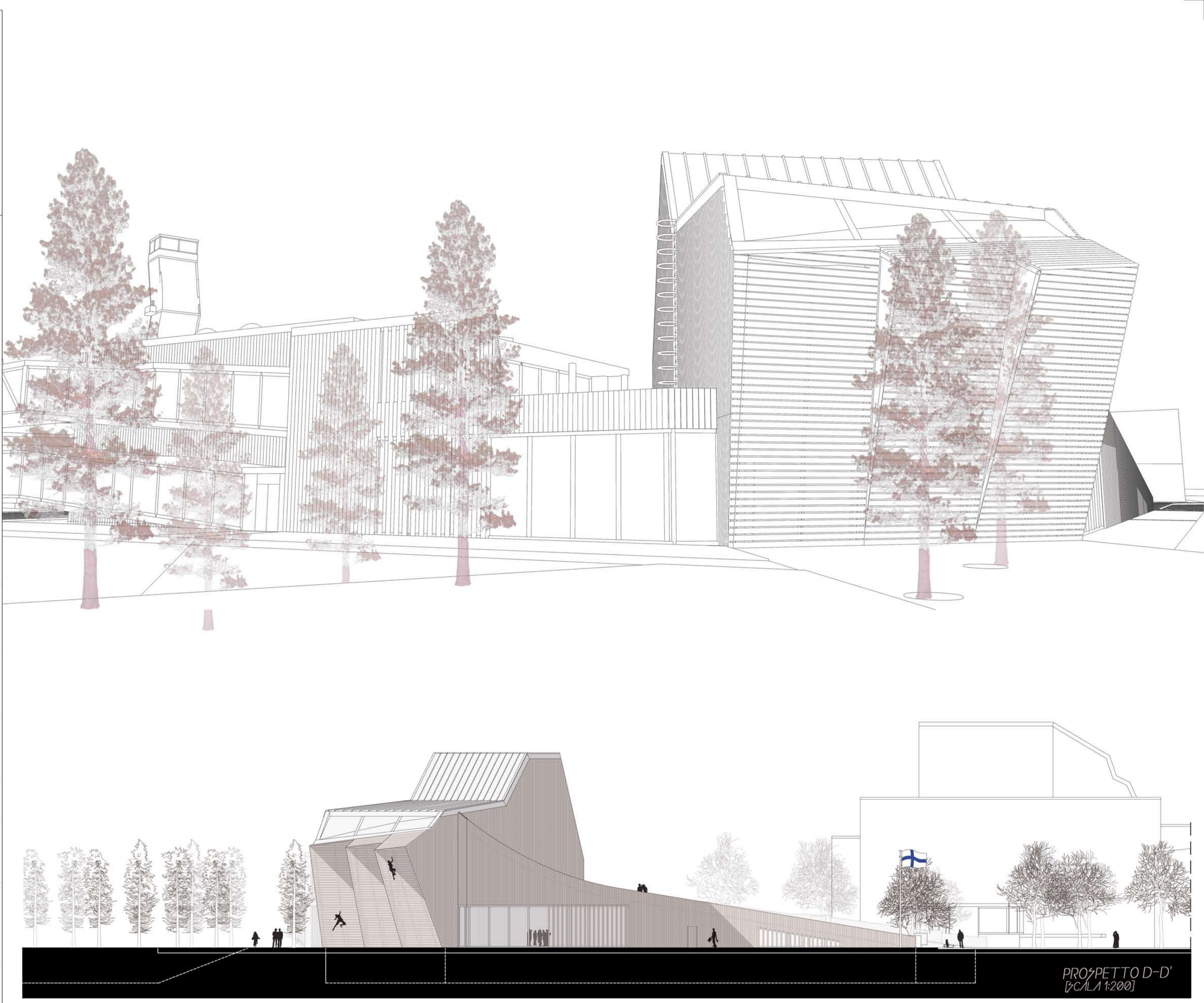


PARTICOLARE I
 [SCALA 1:25]



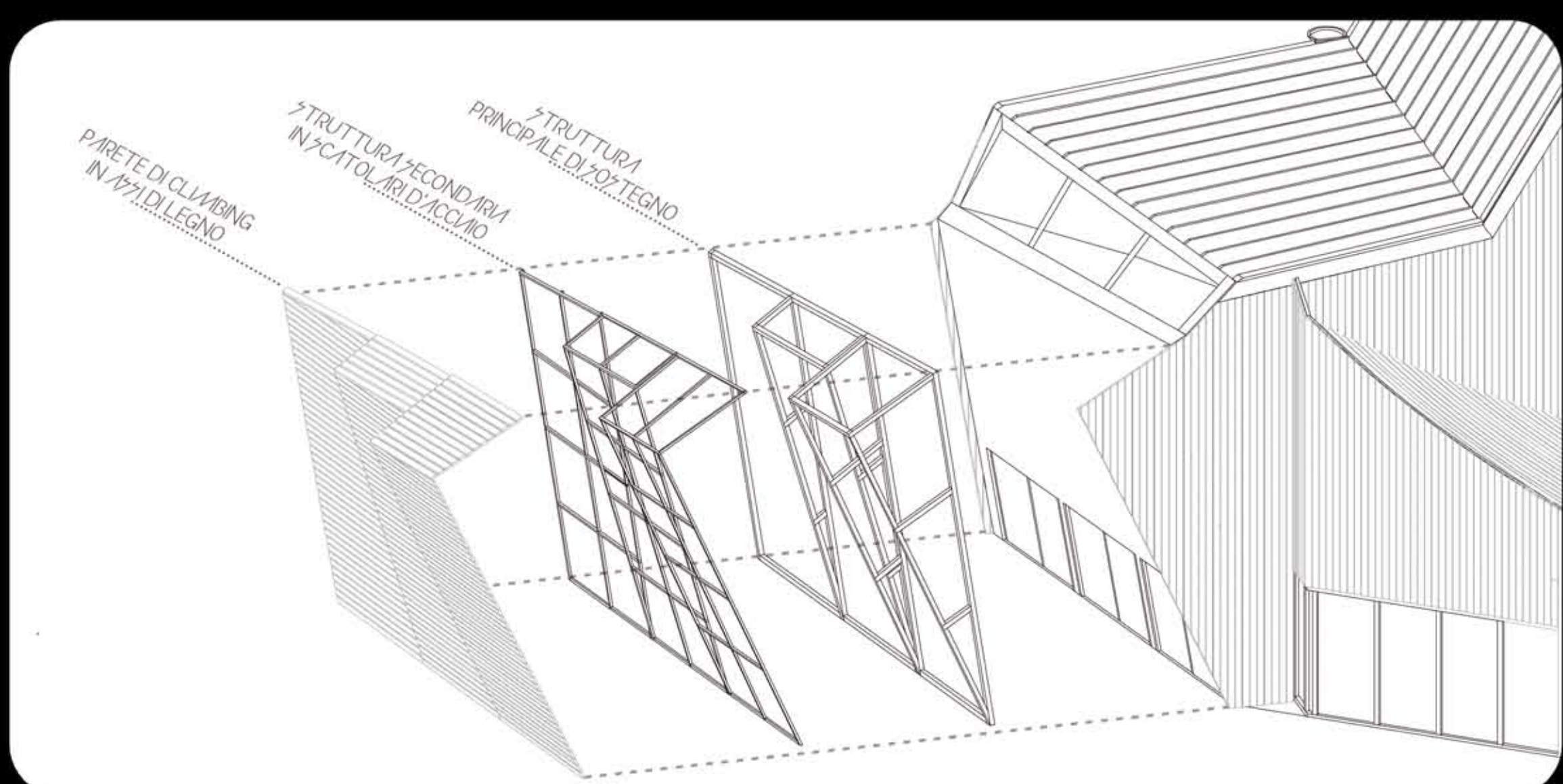
PUNTA PINO TERRA
 NORD
 [SCALA 1:200]







1 SEZIONE E-E'
 [SCALA 1:200]



PARTICOLARE A



PARTICOLARE B
[SCALA 1:25]