



Natural boundary of water



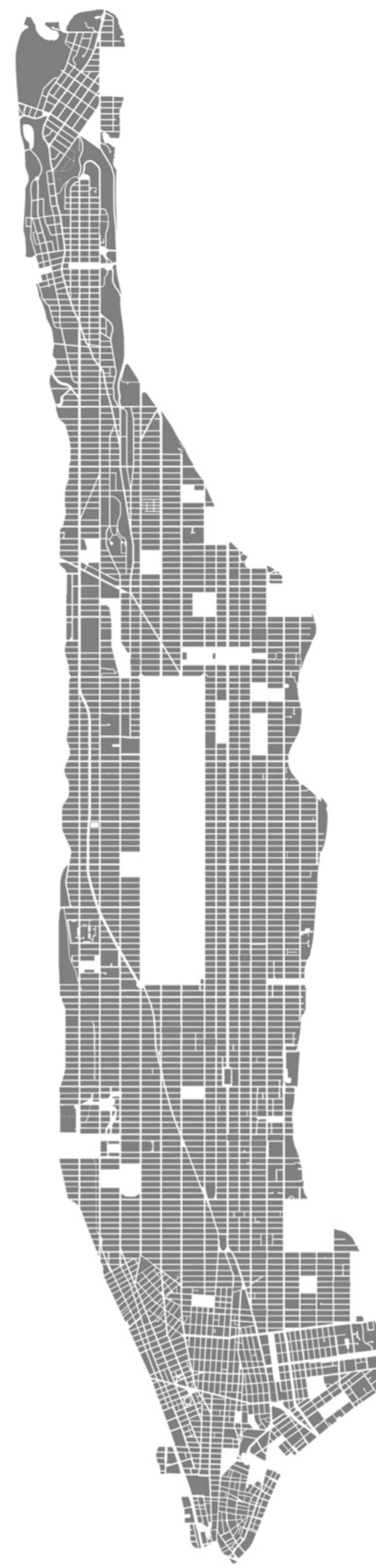
Natural boundary of the lands



Connection with other districts



Natural shape of Manhattan



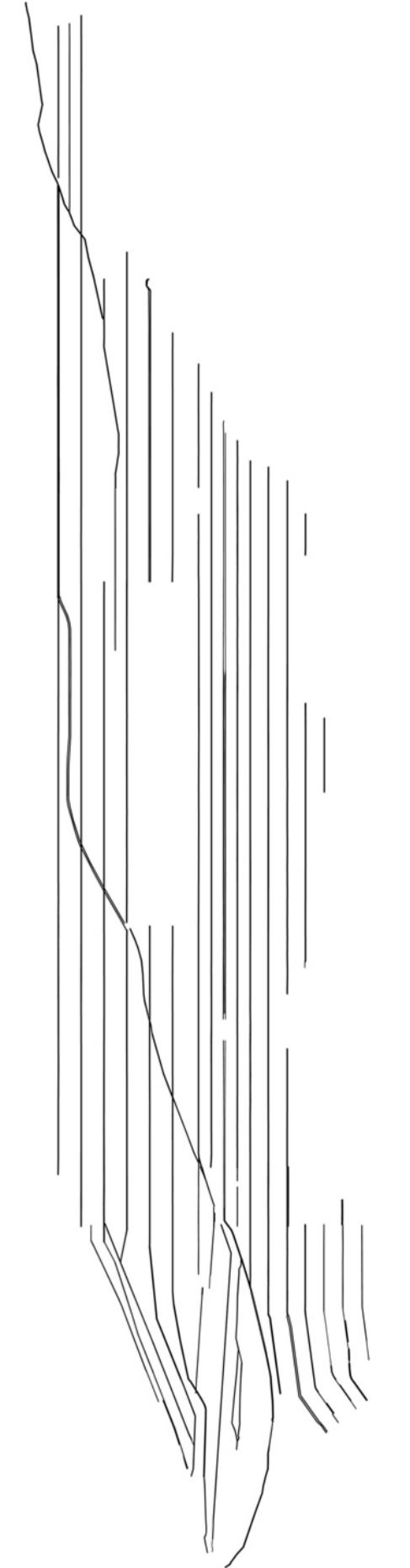
Urban Fabric of Manhattan



Built spaces of Manhattan



Streets in Manhattan



Avenues in Manhattan



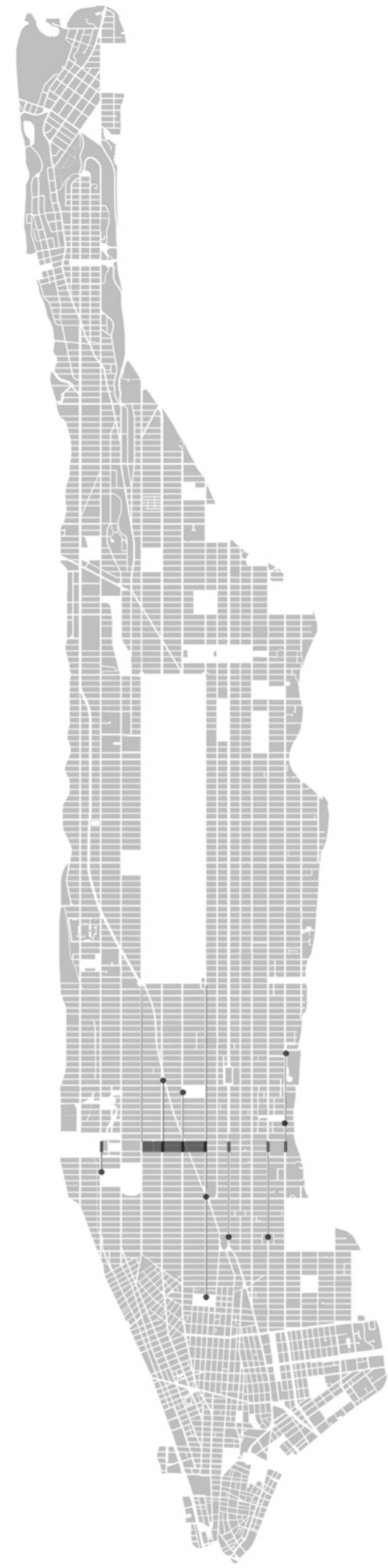
Skyline of Manhattan from New Jersey

New York Two Tower City
A futuristic fantasy in Manhattan Island in 2050

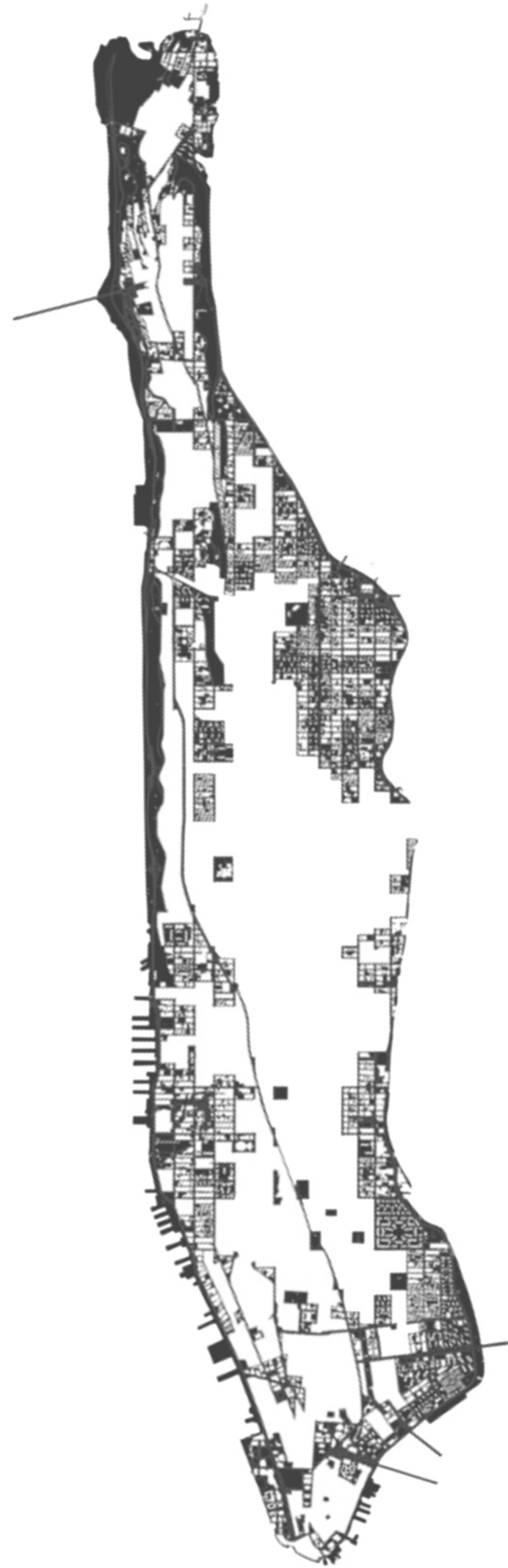




Extent of Commissioner's plan envisioned in 1811



Major Public Spaces



The Mutated areas



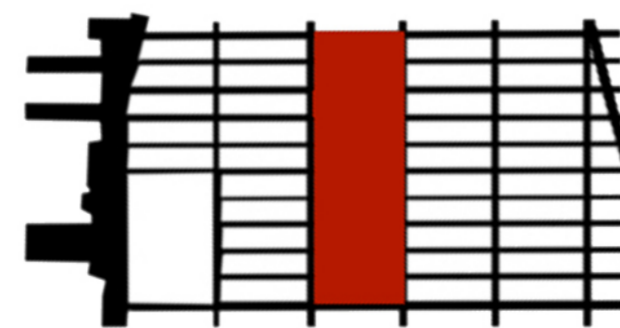
Types of mutations



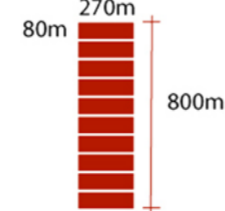
The mutation claim land

The Commissioners' Plan of 1811 was the original design plan for the streets of Manhattan, which put in place the grid plan that has defined Manhattan to this day.

It originated as a proposal by the New York State Legislature, adopted in 1811 for the orderly development and sale of the land of Manhattan between 14th Street and Washington Heights. The plan is arguably the most famous use of the grid plan and is considered by most historians to have been far-reaching and visionary. Since its earliest days, the plan has been criticized for its monotony and rigidity, in comparison with irregular street patterns of older cities, but in recent years has been viewed more favorably by urban planning critics.[1] Central Park, the massive urban greenspace in Manhattan running from Eighth Avenue to Fifth Avenue and from 59th Street to 110th Street, is not a part of this plan, as Central Park was not envisioned until 1853. There were a few smaller interruptions in the grid, such as a park called the Parade between 23rd Street and 33rd Street.



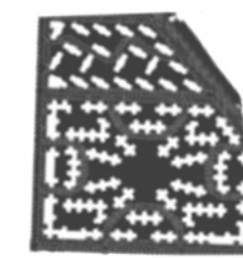
The grid



The dissolving mutations



The fragmented mutations



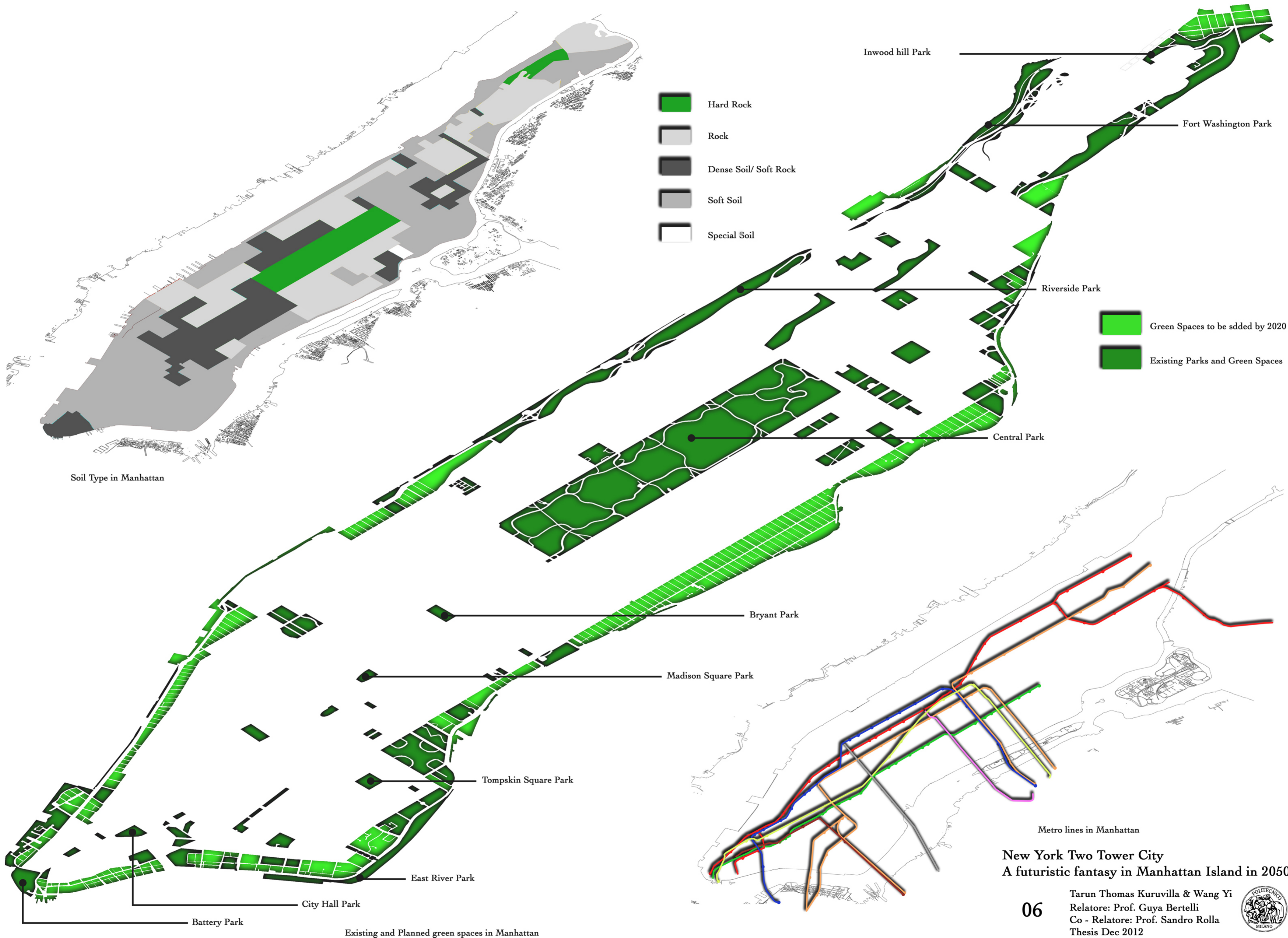
The reestablished mutations

New York Two Tower City A futuristic fantasy in Manhattan Island in 2050

02

Tarun Thomas Kuruvilla & Wang Yi
Relatore: Prof. Guya Bertelli
Co - Relatore: Prof. Sandro Rolla
Thesis Dec 2012





Soil Type in Manhattan

Existing and Planned green spaces in Manhattan

Metro lines in Manhattan

New York Two Tower City
A futuristic fantasy in Manhattan Island in 2020





Empire State Building: Designed in Art Deco style by William F. Lamb of Shreve, Lamb and Harmon, The Empire State Building is a 102-story skyscraper. It has a roof height of 1,250 feet (381 meters), and with its antenna spire included, it stands a total of 1,454 ft (443.2 m) high. It stood as the world's tallest building for 40 years, from its completion in 1931 until construction of the World Trade Center's North Tower was completed in 1972. Following the September 11 attacks in 2001, the Empire State Building was again the tallest building in New York (although it was no longer the tallest in the US or the world).



Madison Square Garden: Located between Seventh and Eighth Avenues from 31st to 33rd Streets, it is situated atop Pennsylvania Station. Opened in 1968, it is the fourth venue to bear the name, the first two of which were located on Madison Square, with the third Madison Square Garden (1925) further uptown at Eighth Avenue and 50th Street. The Theater at Madison Square Garden seats between 2,000 and 5,600 for concerts and can also be used for meetings, stage shows, and graduation ceremonies.



Jacobs K. Javits Convention Centre: Designed by architect James Ingo Freed of I. M. Pei and partners. The revolutionary space frame structure was begun in 1980 and finished in 1986 and named for United States Senator Jacob K. Javits, who died that year. The exhibit space is over 62,700 square meters. On October 16, 2006, a groundbreaking ceremony was held to mark the symbolic start of a \$1.7 billion expansion project. The project, which would have expanded the center's size by 45 percent, was scheduled for completion by 2010. Architect Richard Rogers led the design team.



James A. Farley Post office Building: Built in 1912, the building is famous for bearing the inscription: Neither snow nor rain nor heat nor gloom of night stays these couriers from the swift completion of their appointed rounds. In 1982, the post office was officially designated The James A. Farley Building, as a monument and testament to the political career of the nation's 53rd Postmaster General



World Financial Centre: Designed by César Pelli, with Adamson Associates, the complex was built by Olympia and York between 1985 and 1988 on landfill used to build Battery Park City. The fill material came from dirt excavated during the building of the World Trade Center, as well as garbage, dirt and debris

Chrysler Building: Completed in 1930, this art deco style building designed by William Van Allen, with a height of 319m, the structure was the world's tallest building for 11 months before it was surpassed by Empire State Building in 1931.



UN Headquarters: It has been official headquarters of the United Nations since its completion in 1952. Though it is in New York City, and part of the United States, the land used by the United Nations Headquarters is under the administration of the United Nations, while also being subject to most local, state, and federal laws. The United Nations Headquarters complex was constructed in New York City in 1949-1950 beside the East River, on 17 acres (69,000 m2) of land



Grand Central Terminal: Built by and named for the New York Central Railroad in the heyday of American long-distance passenger rail travel, it is the largest train station in the world by number of platforms: 44, with 67 tracks along them. They are on two levels, both below ground, with 41 tracks on the upper level and 26 on the lower, though the total number of tracks along platforms and in rail yards exceeds 100. The terminal covers an area of 48 acres (19 ha).

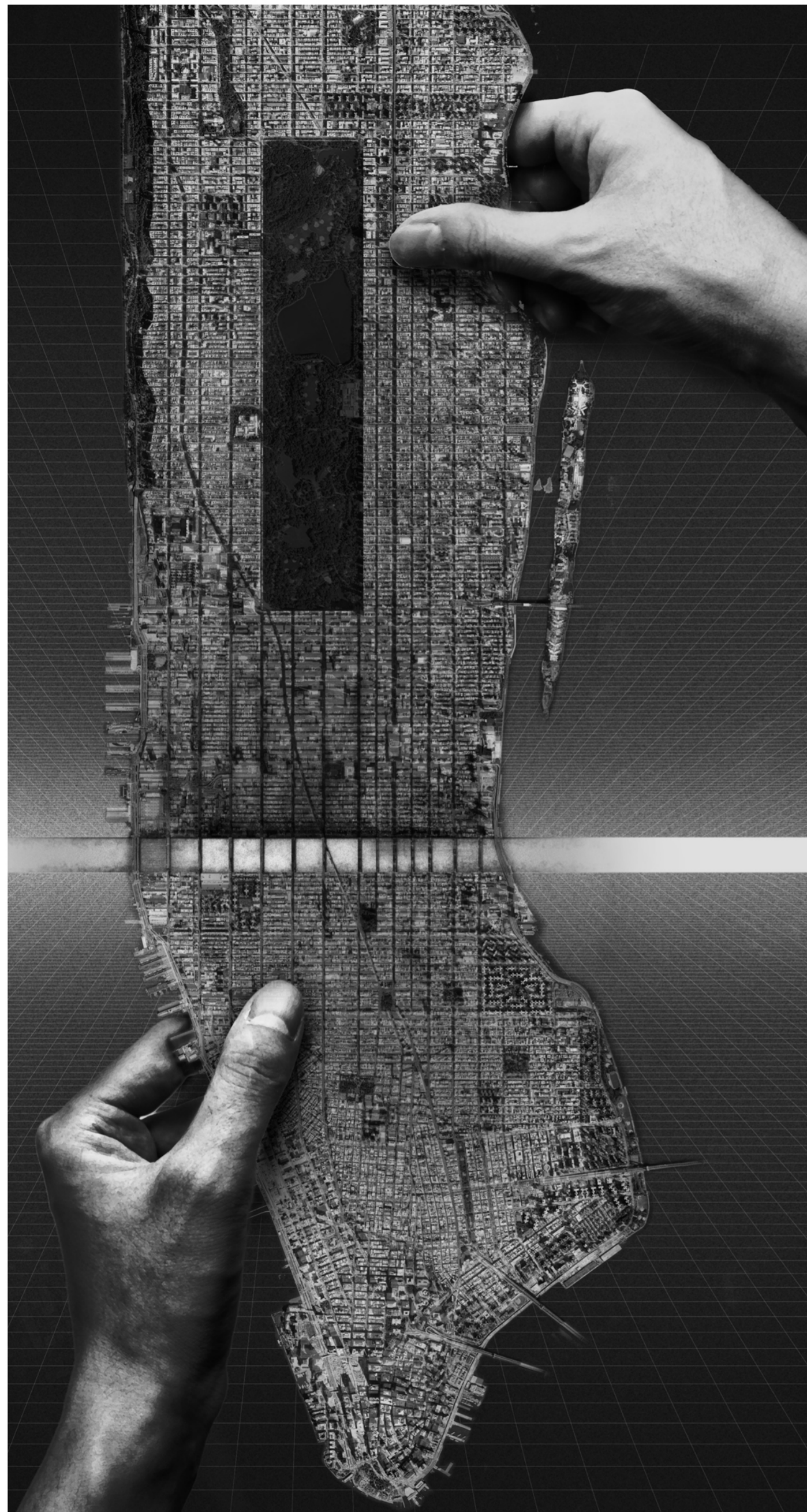


New York University Hospital: Founded in 1841 as the University Medical College, the NYU School of Medicine is one of the foremost medical schools in the United States. Located at the East River waterfront at 1st Ave. between 30th and 34th street.



New York Two Tower City
A futuristic fantasy in Manhattan Island in 2050

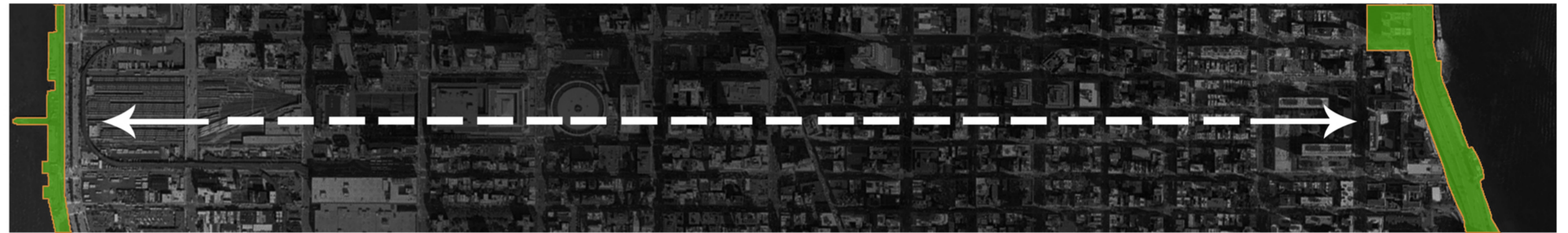




The manipulation



Creating an underground network



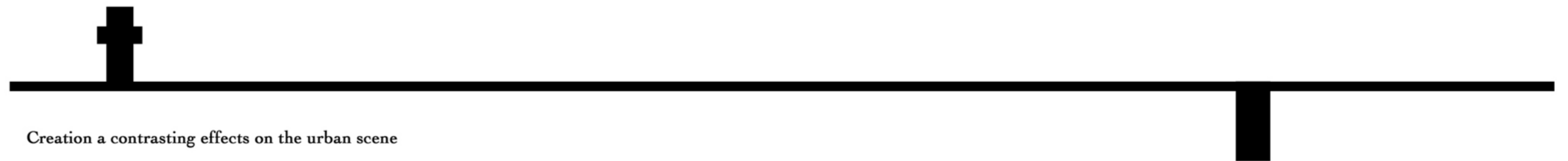
Connecting the two end greens of the island



Two towers representing the importance between the east and the west of the island



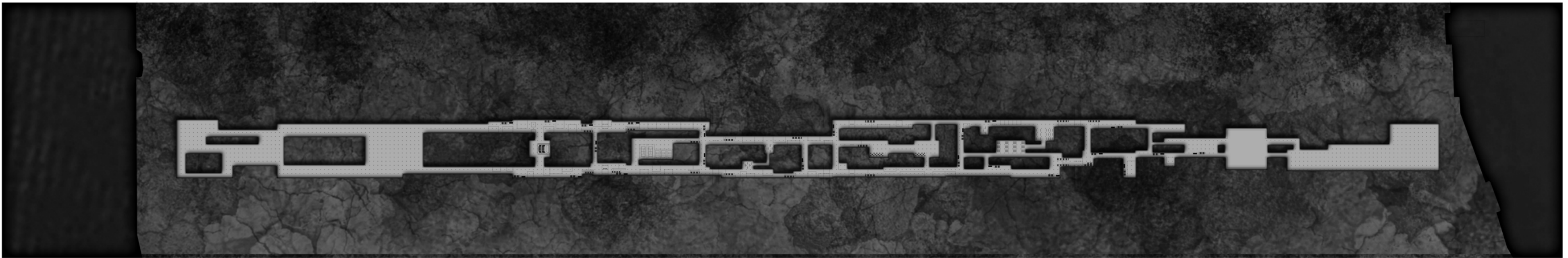
Filling voids on ground level through the use of folies of various activities



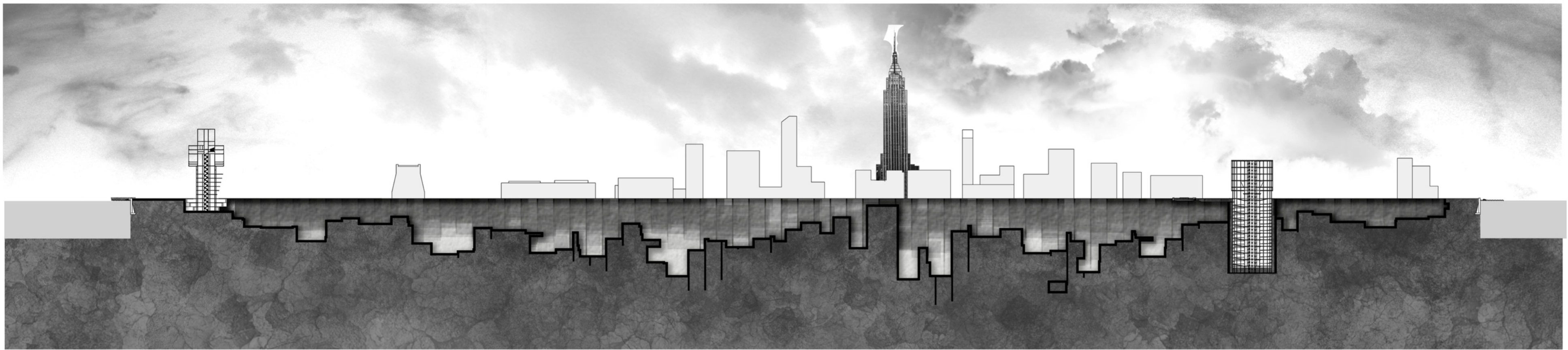
Creation a contrasting effects on the urban scene

New York Two Tower City
A futuristic fantasy in Manhattan Island in 2050

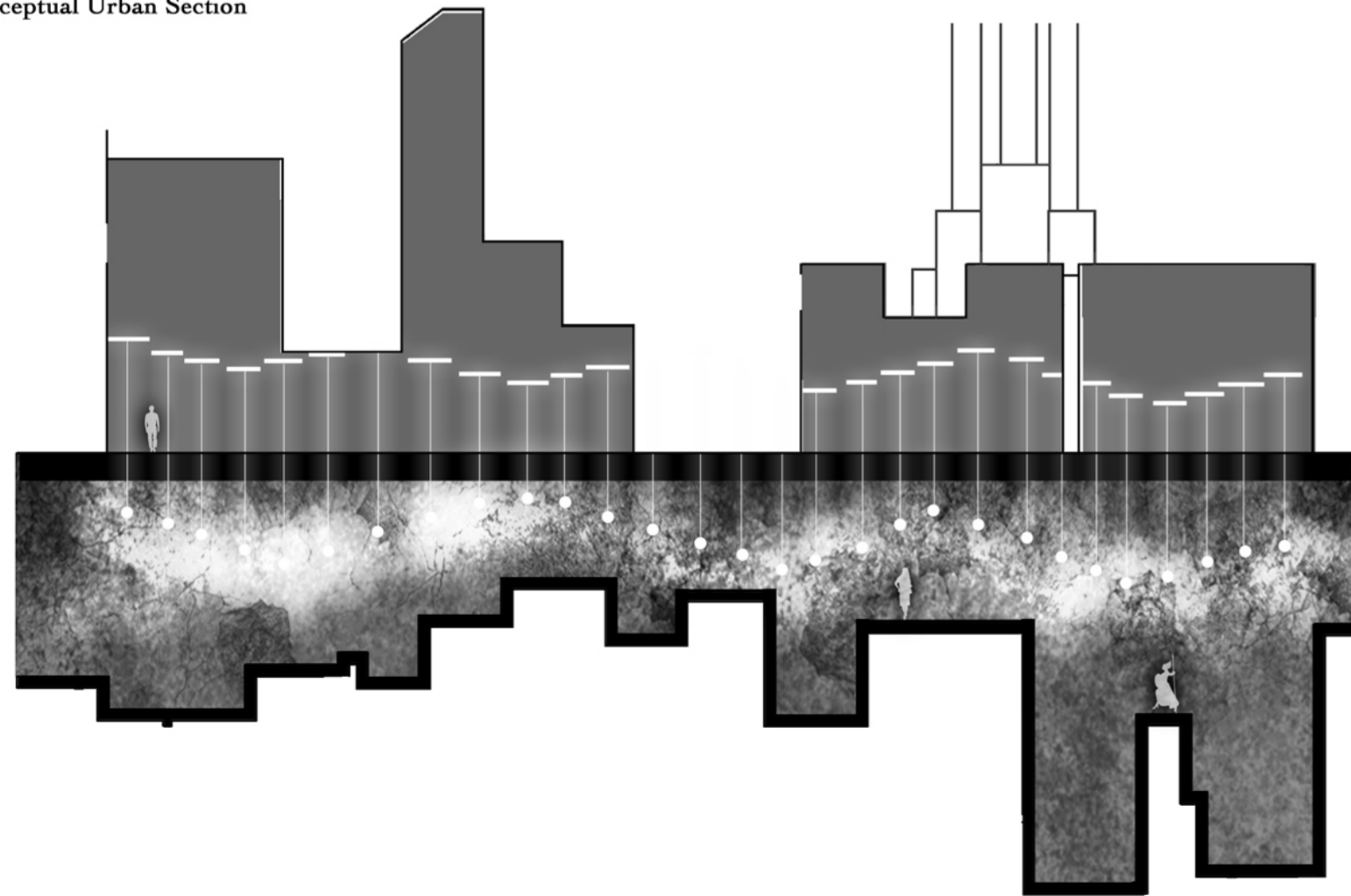




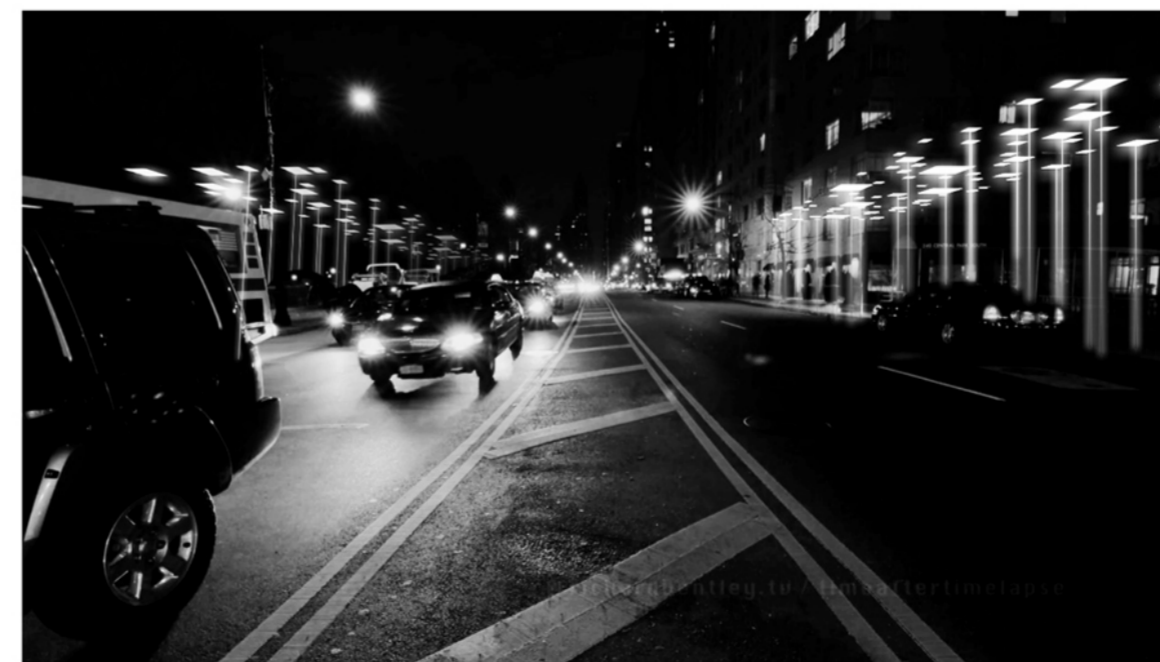
Conceptual Plan at level -10



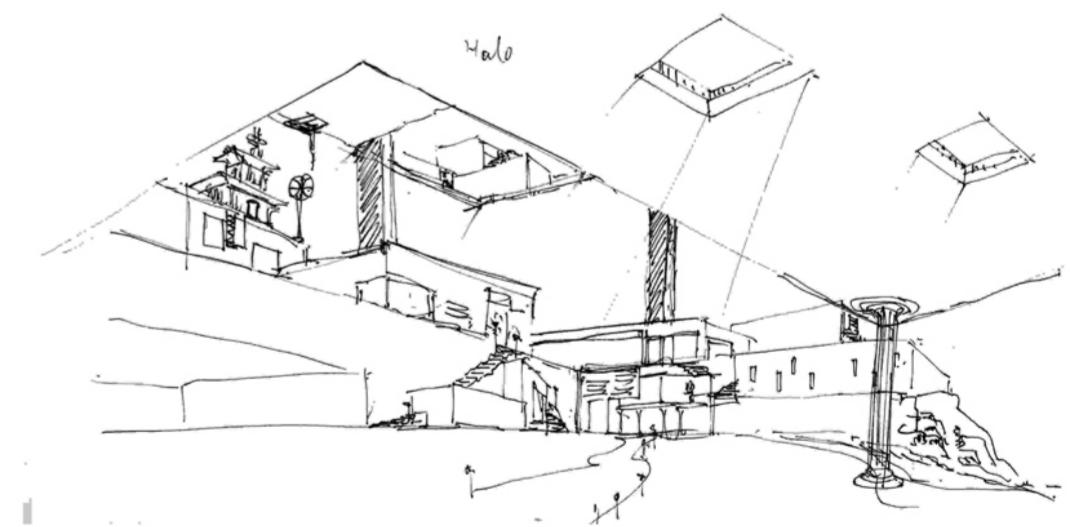
Conceptual Urban Section



Conceptual interior Section



Canopy lighting on ground level



Conceptual daylighting method

New York Two Tower City
A futuristic fantasy in Manhattan Island in 2050

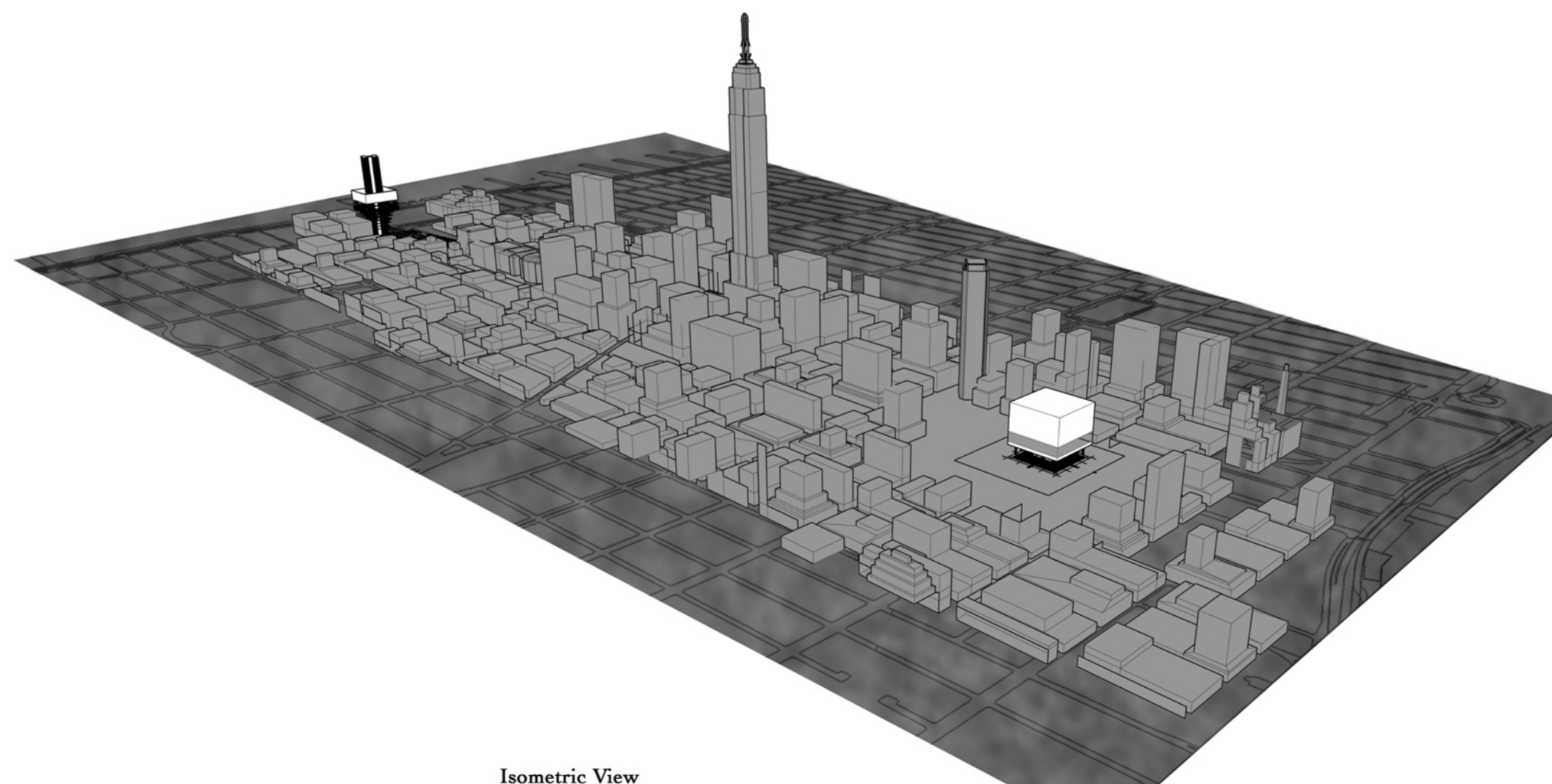




Masterplan 1:5000



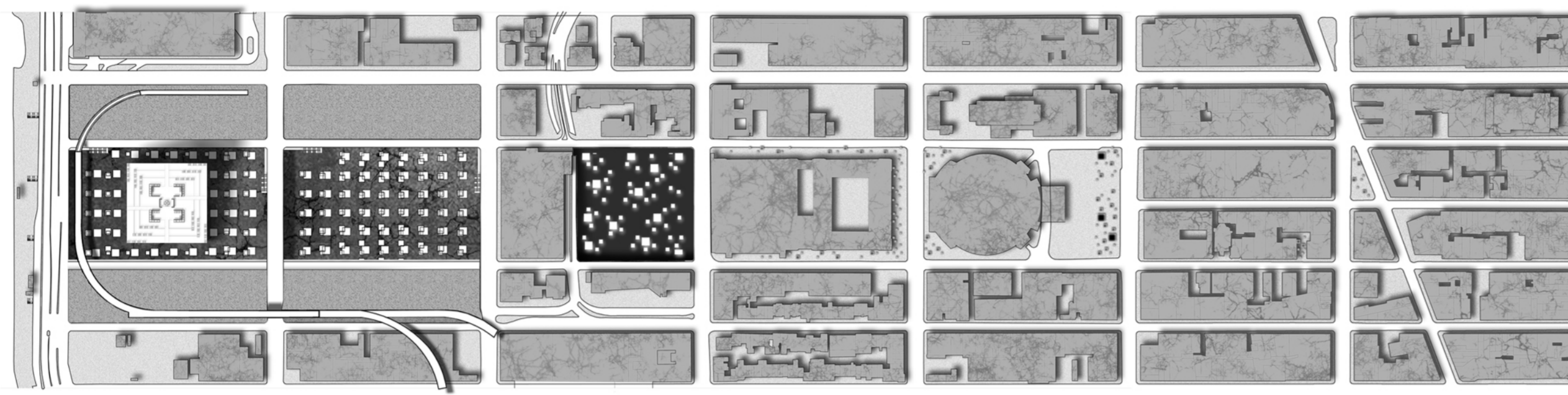
Section through the towers 1:5000



Isometric View

New York Two Tower City
 A futuristic fantasy in Manhattan Island in 2050

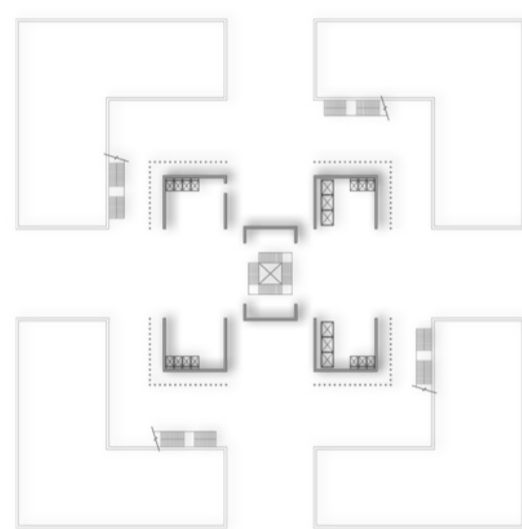




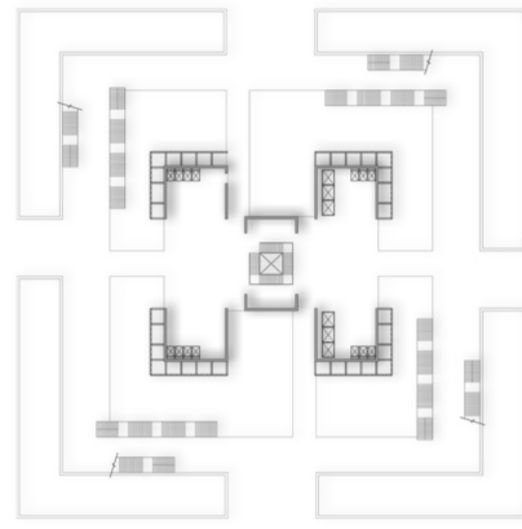
Masterplan 1:2000



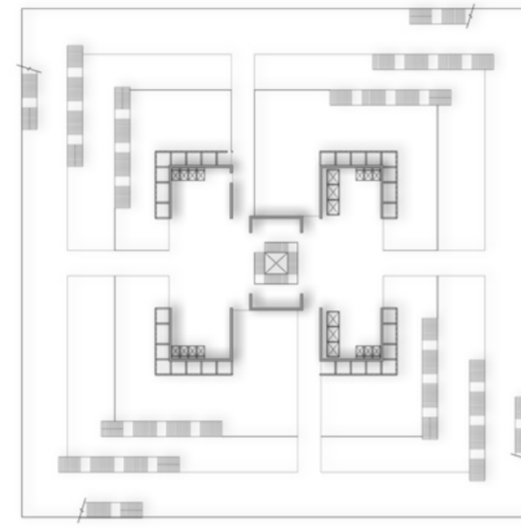
Outdoor Interactive Spaces



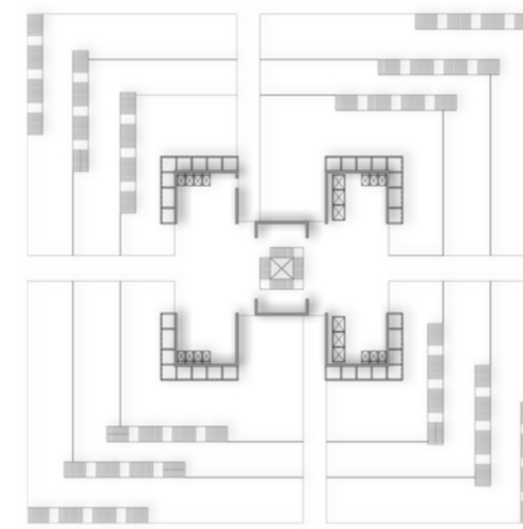
Level: -30



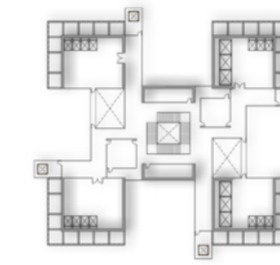
Level: -20



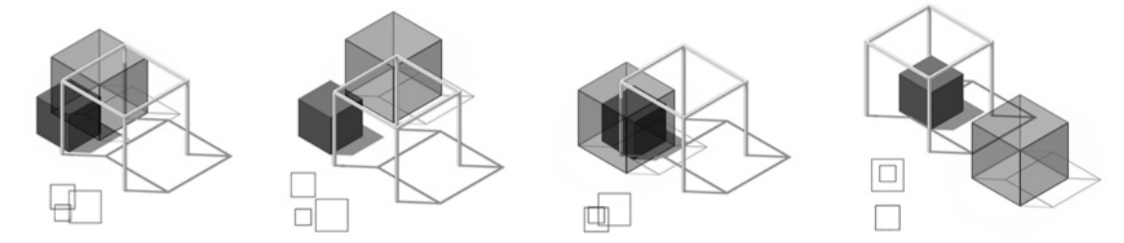
Level: -10



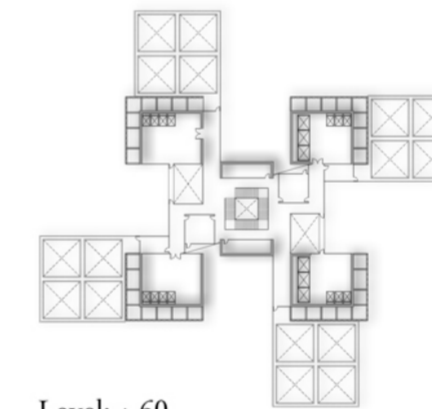
Level: 00



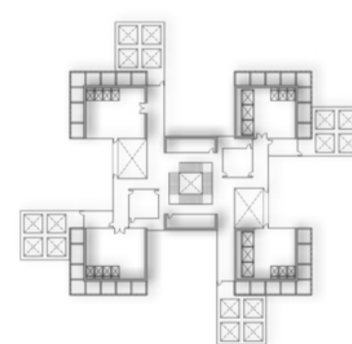
Level: +10



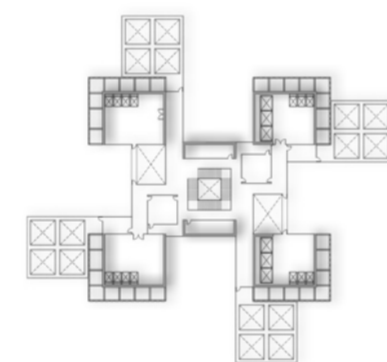
Outdoor Interactive Spaces



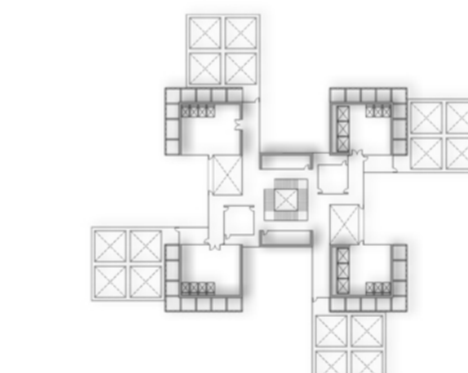
Level: +20



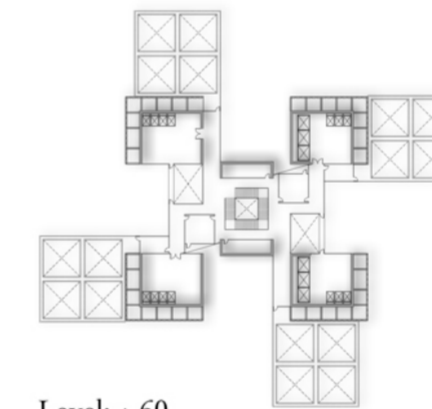
Level: +30



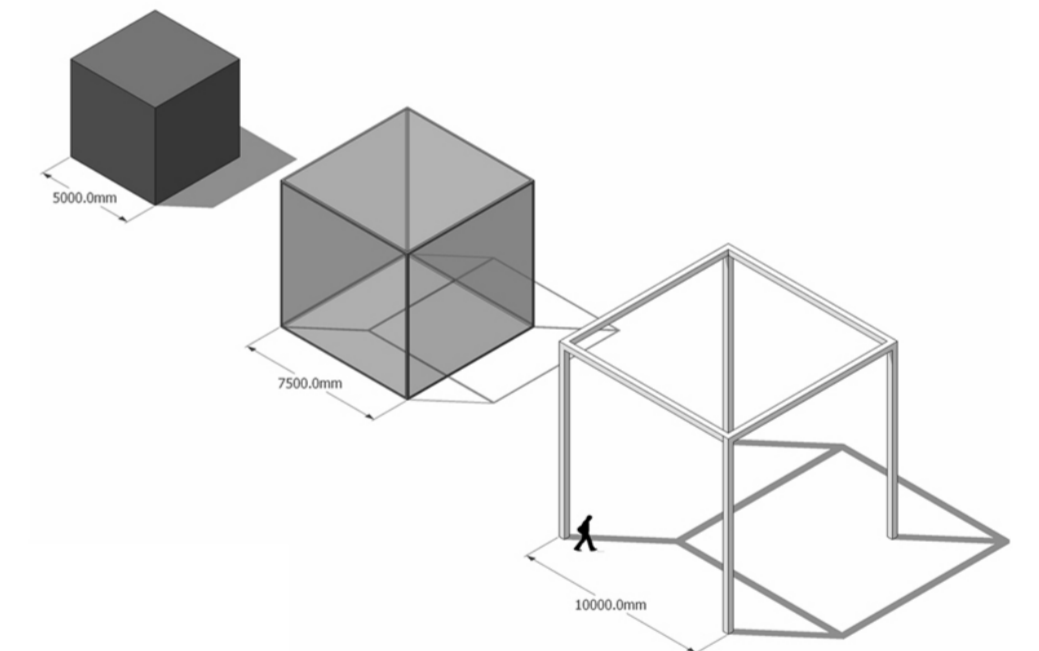
Level: +40



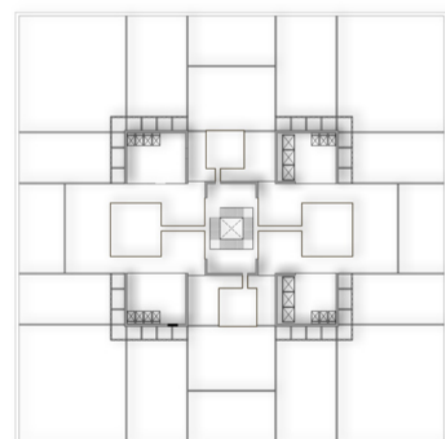
Level: +50



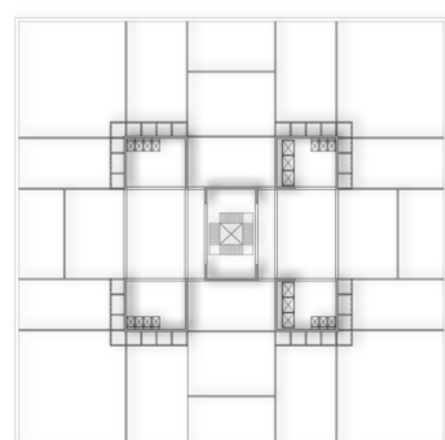
Level: +60



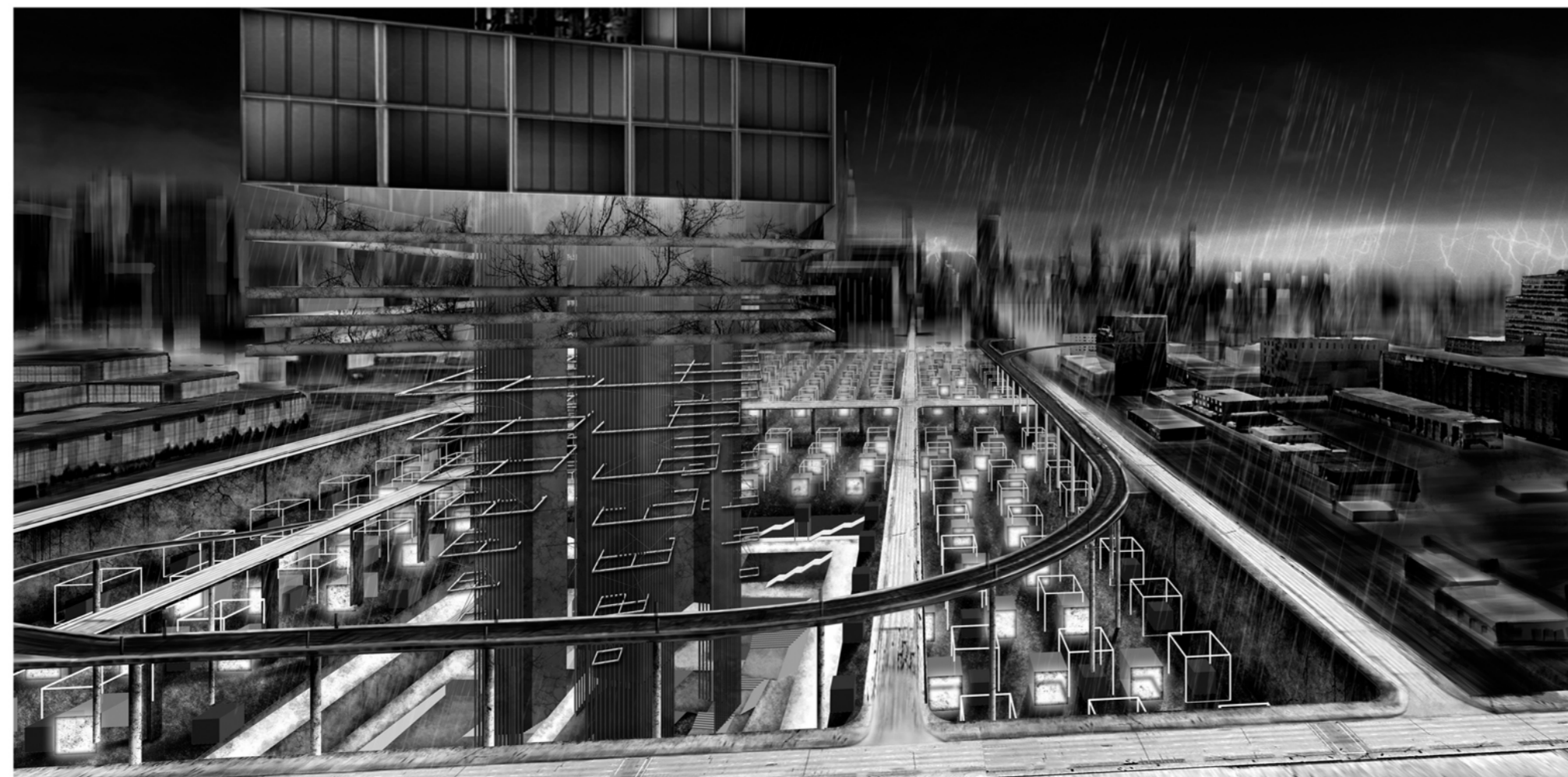
Outdoor Interactive Spaces



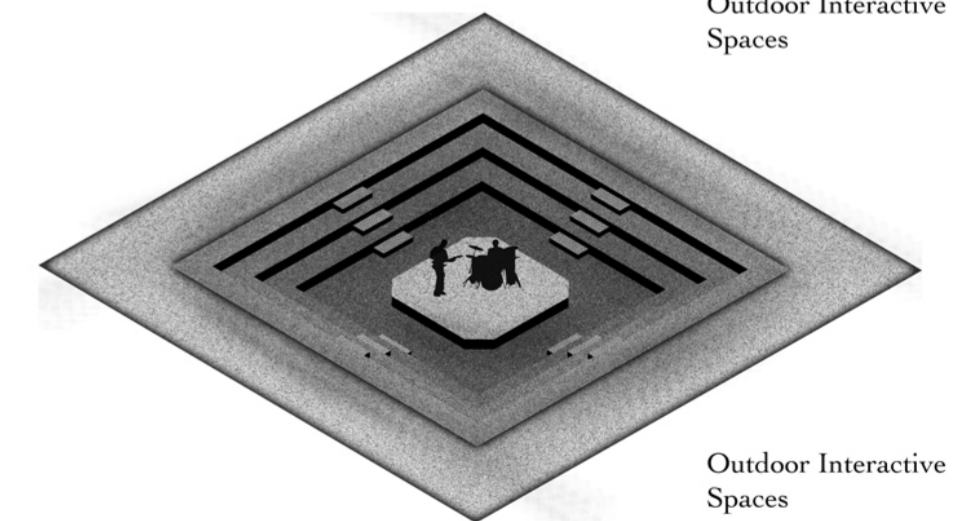
Level: +80



Level: +85



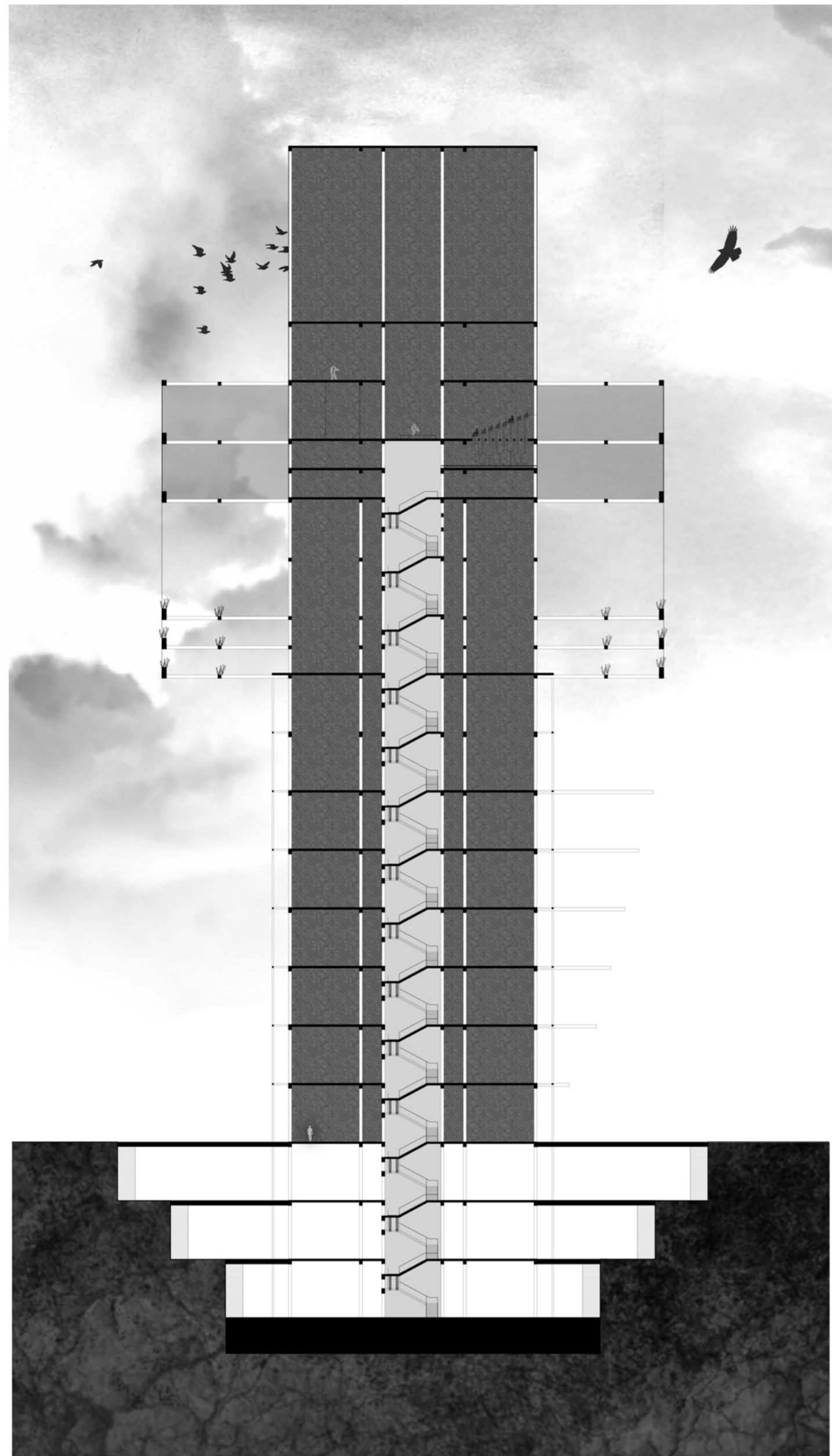
View of the tower with the folies



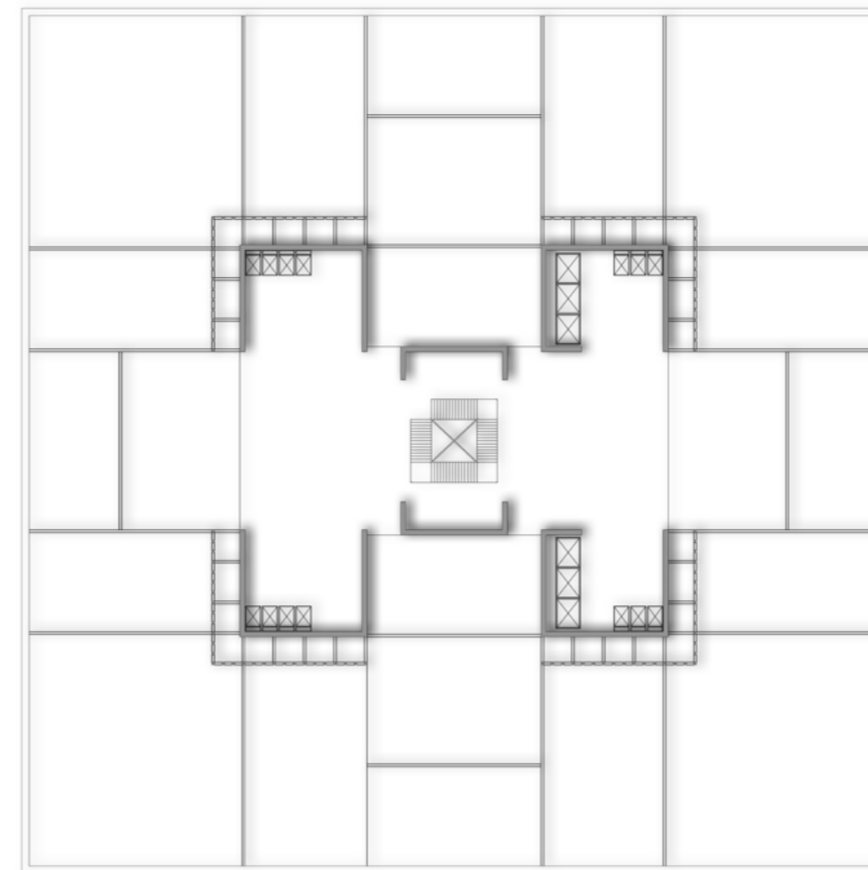
Outdoor Interactive Spaces

New York Two Tower City
A futuristic fantasy in Manhattan Island in 2050

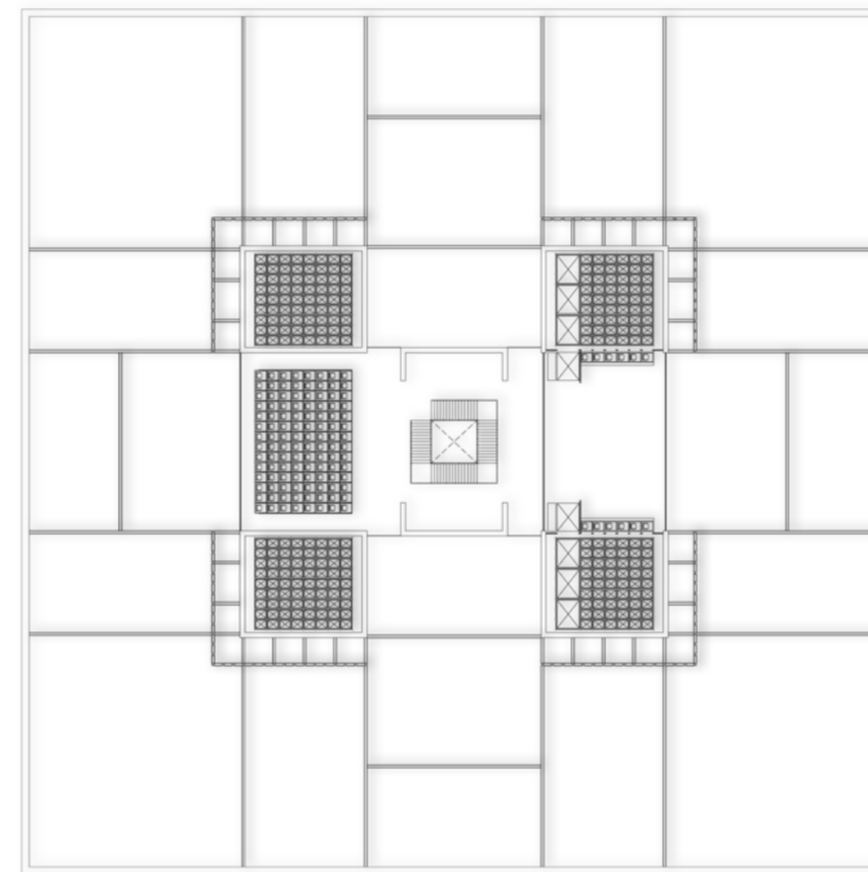




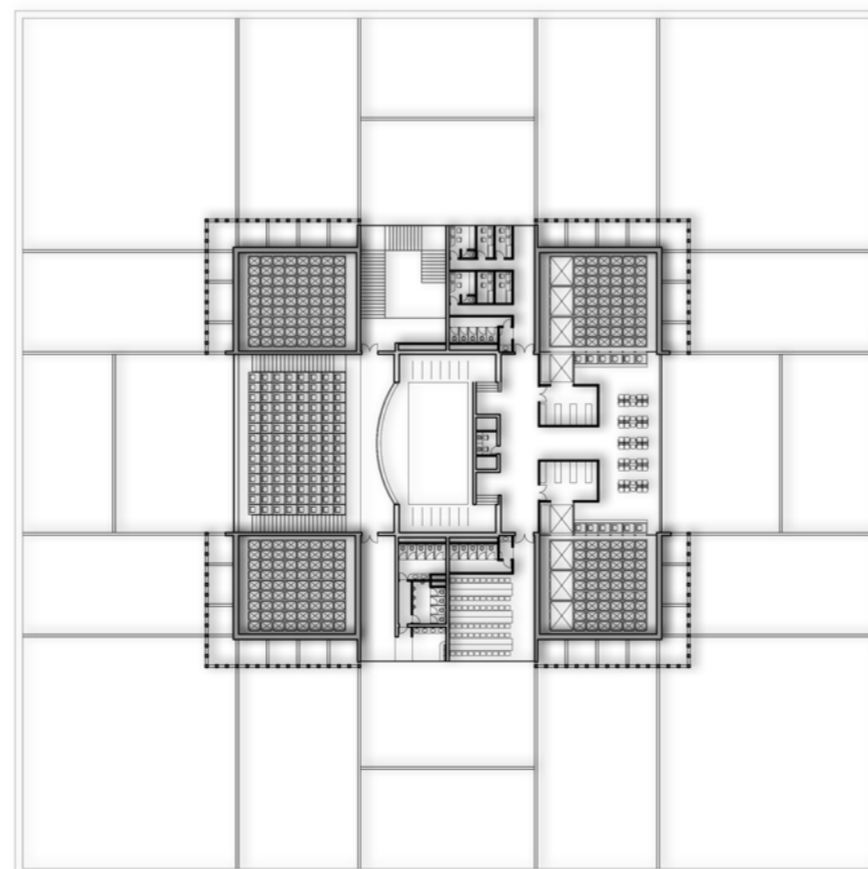
Section 1:500



Plan - Level +90
1:500



Plan - Level +110
1:500



Plan - Level +130
1:500



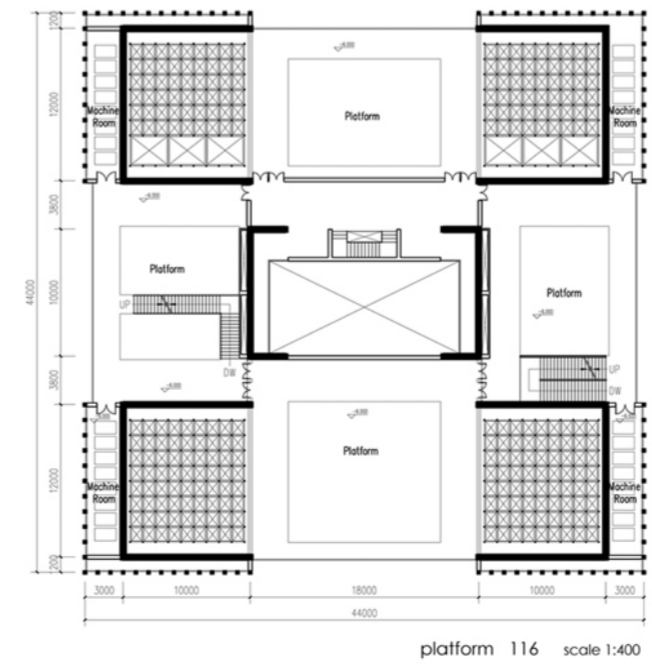
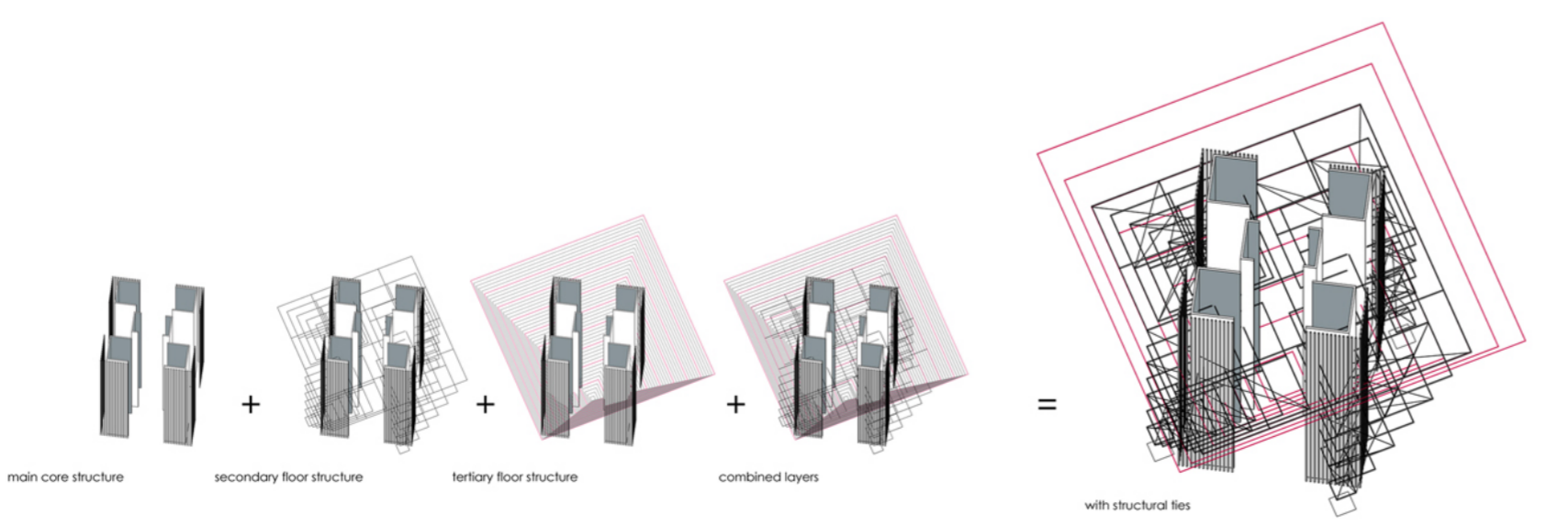
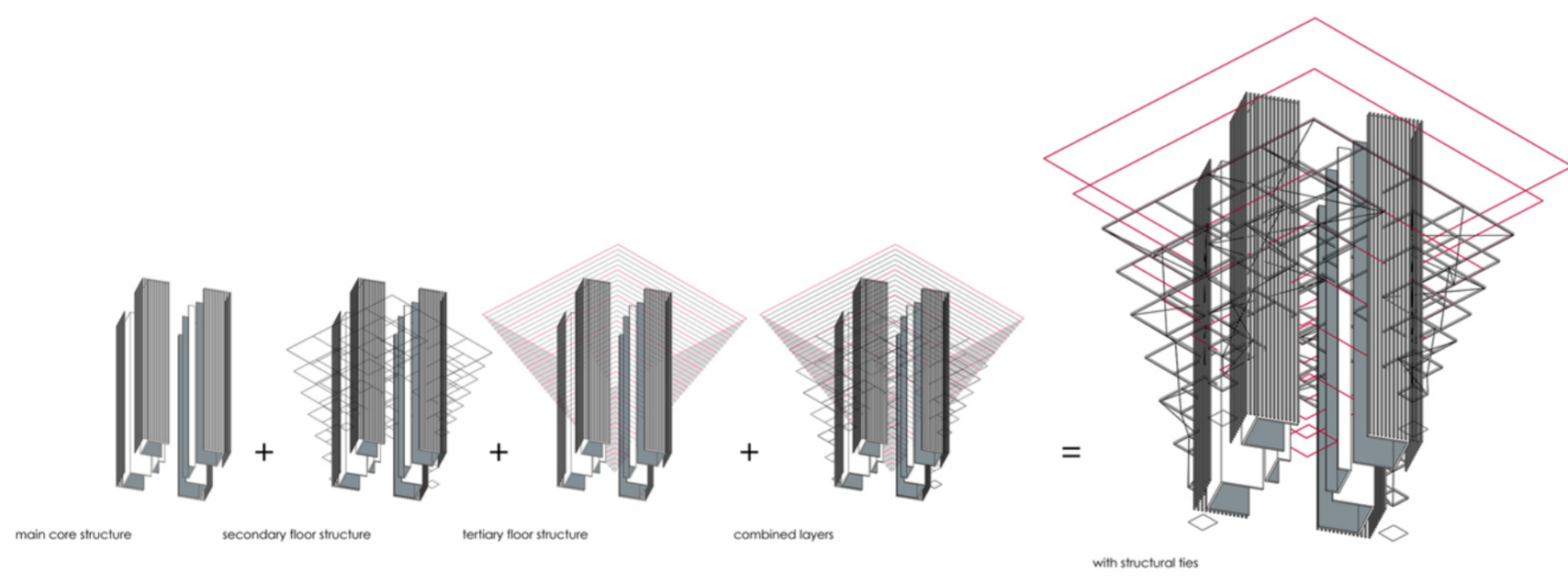
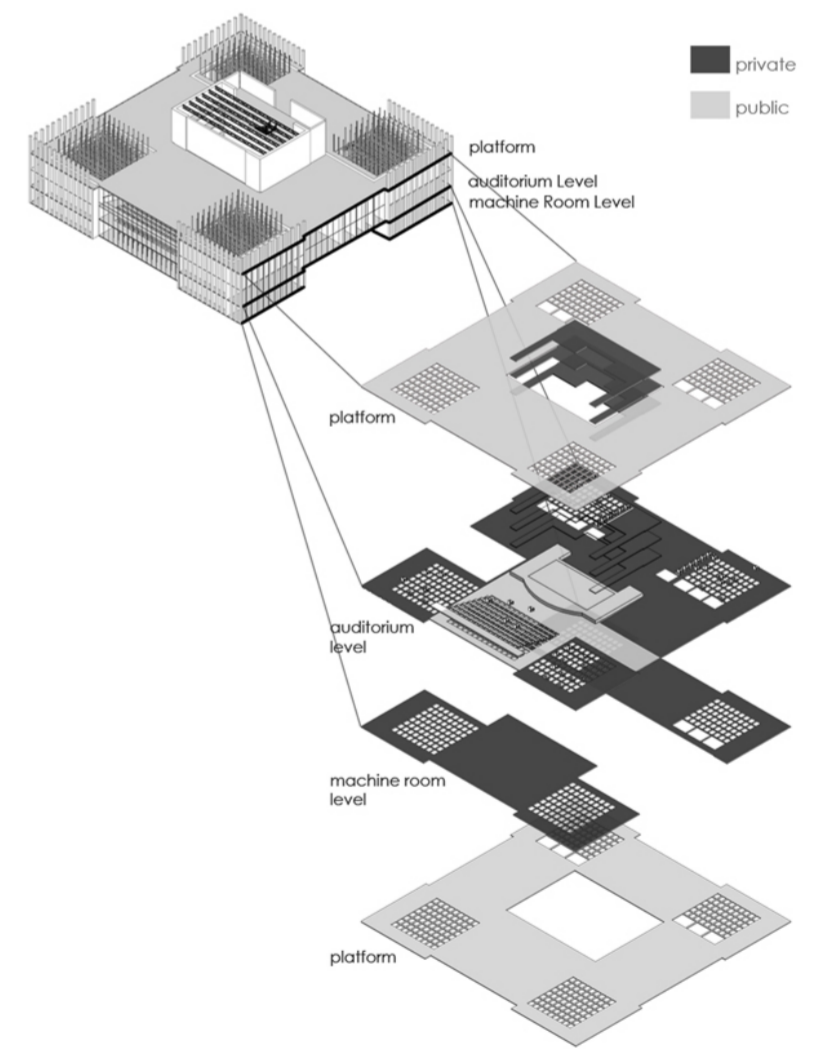
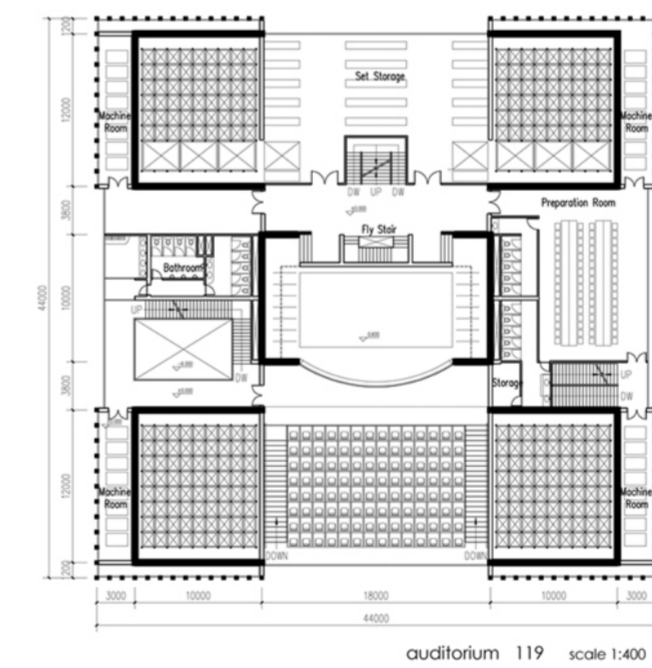
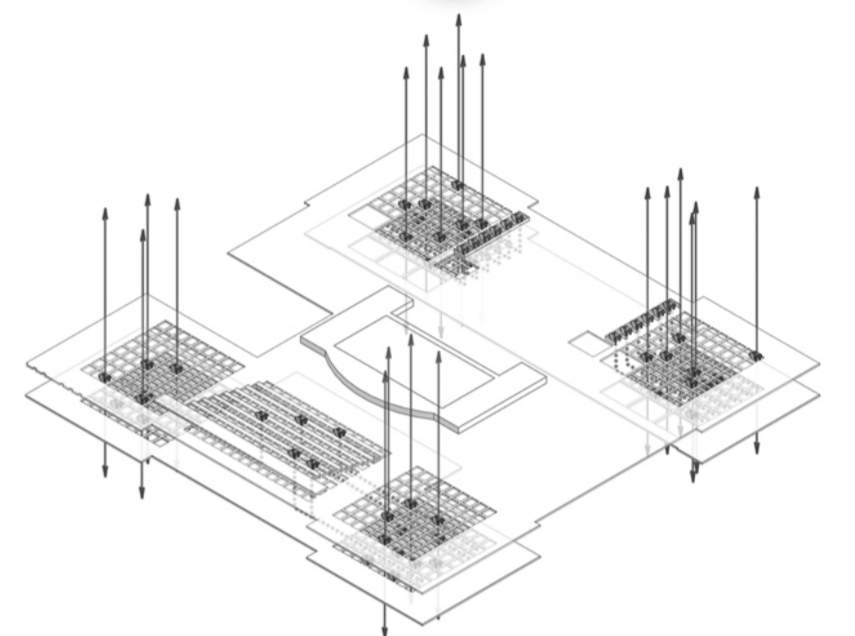
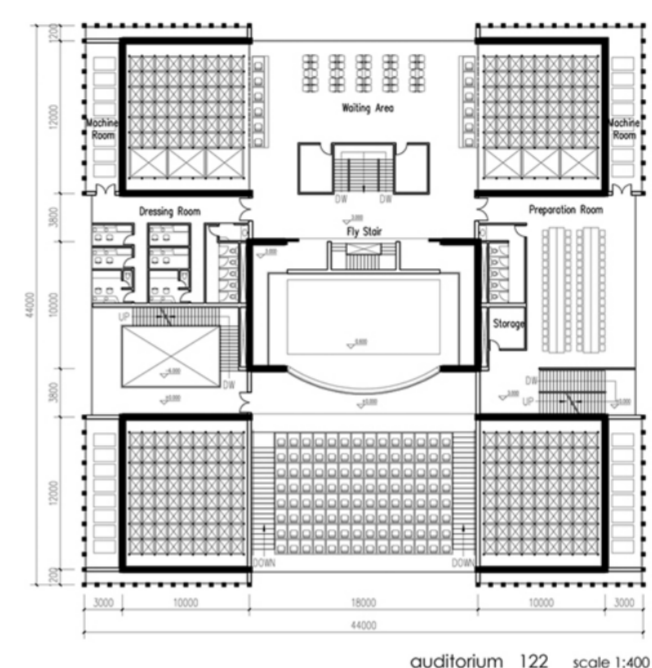
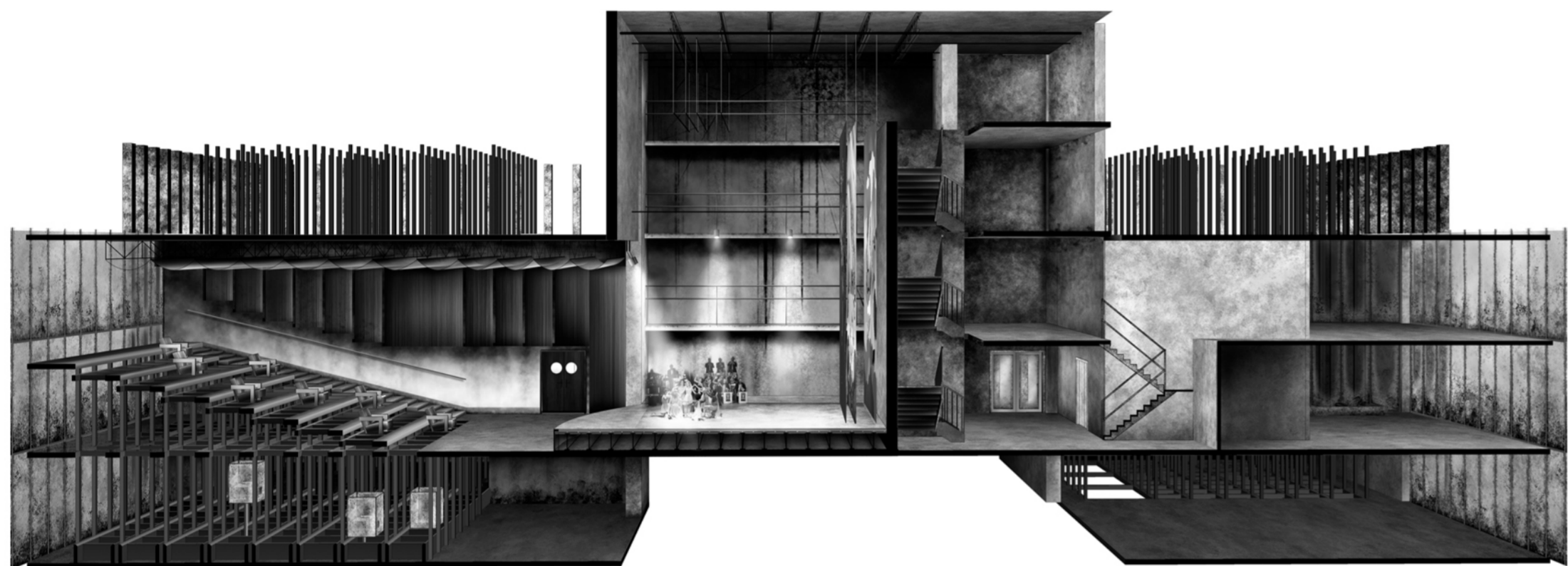
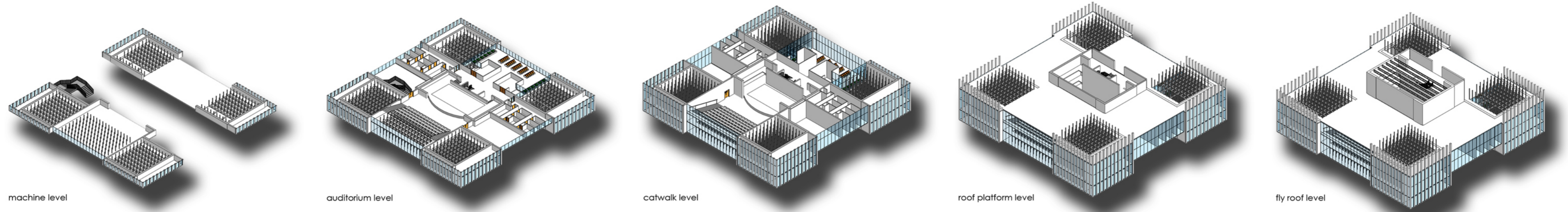
View

New York Two Tower City
A futuristic fantasy in Manhattan Island in 2050

09

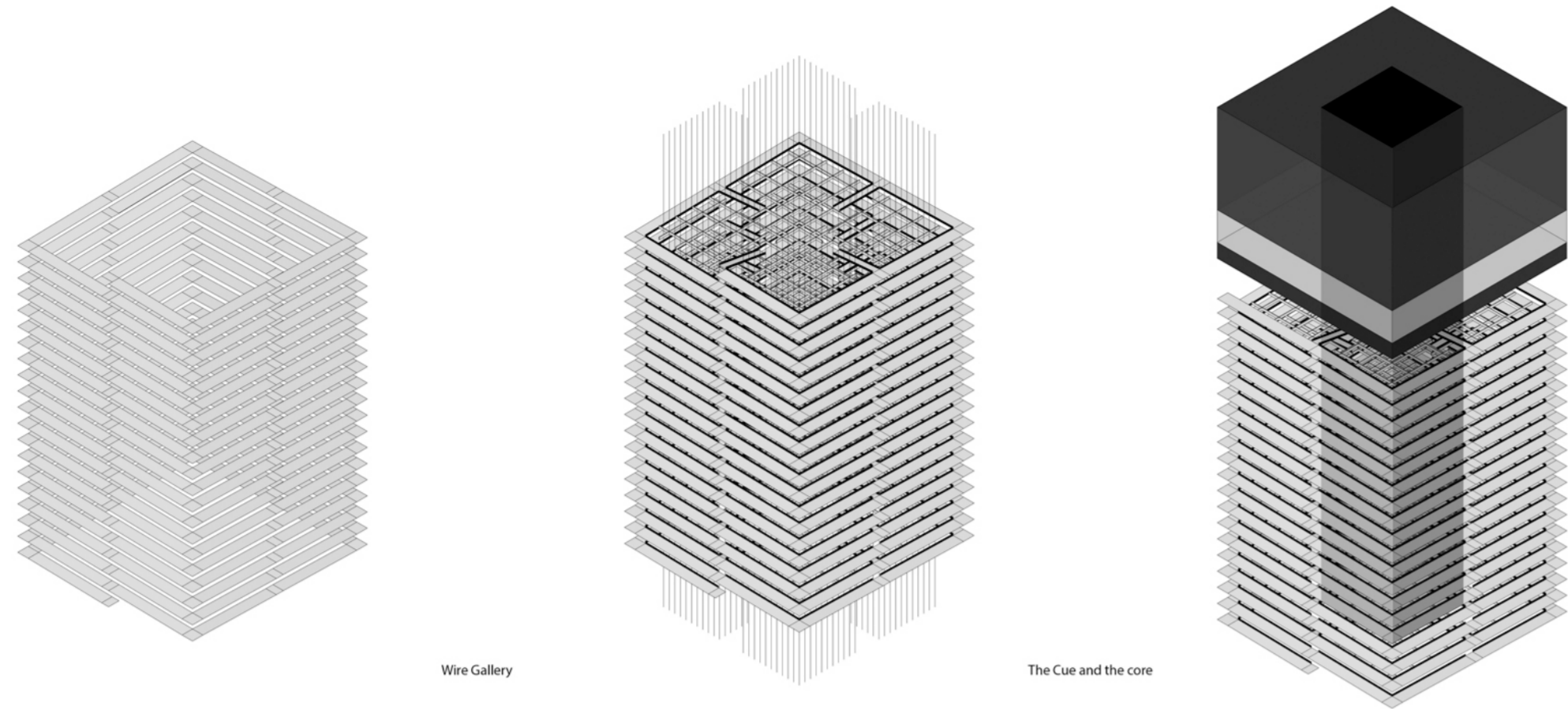
Tarun Thomas Kuruvilla & Wang Yi
Relatore: Prof. Guya Bertelli
Co - Relatore: Prof. Sandro Rolla
Thesis Dec 2012





New York Two Tower City
A futuristic fantasy in Manhattan Island in 2050

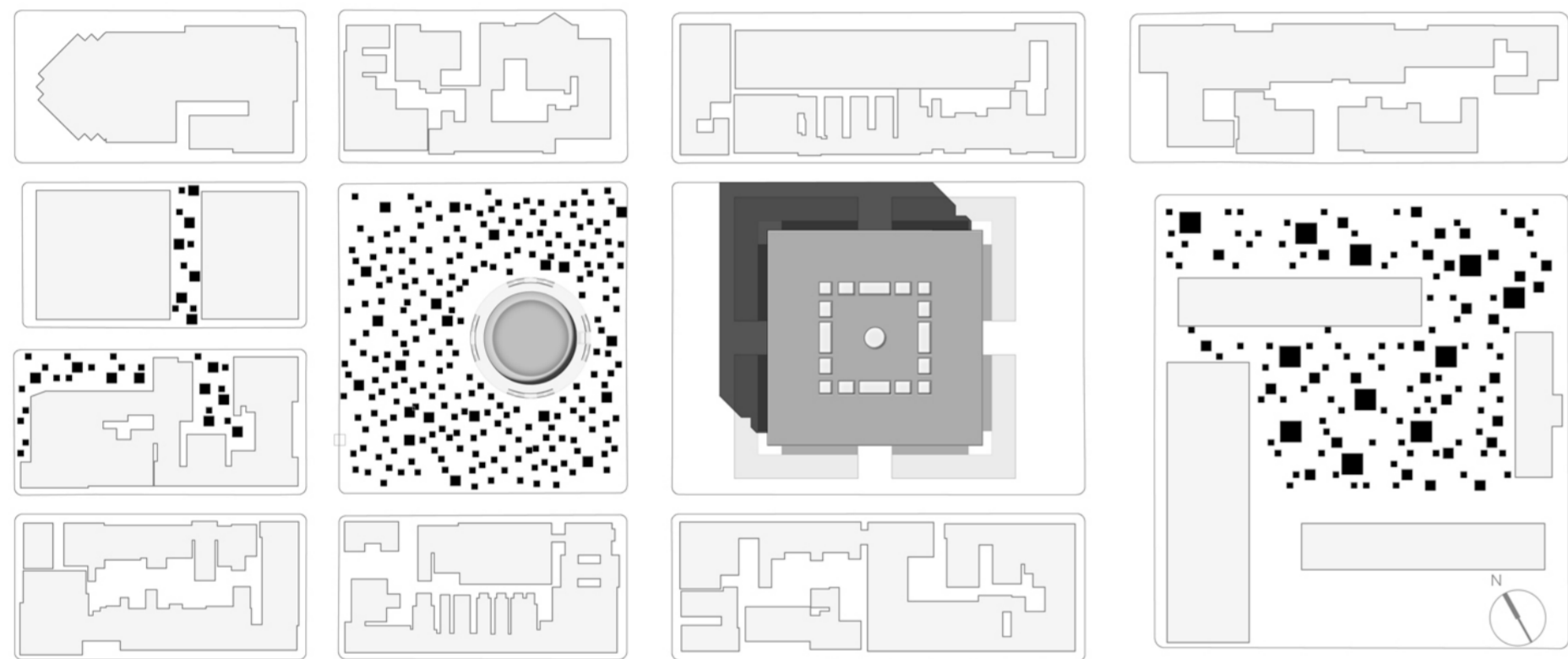




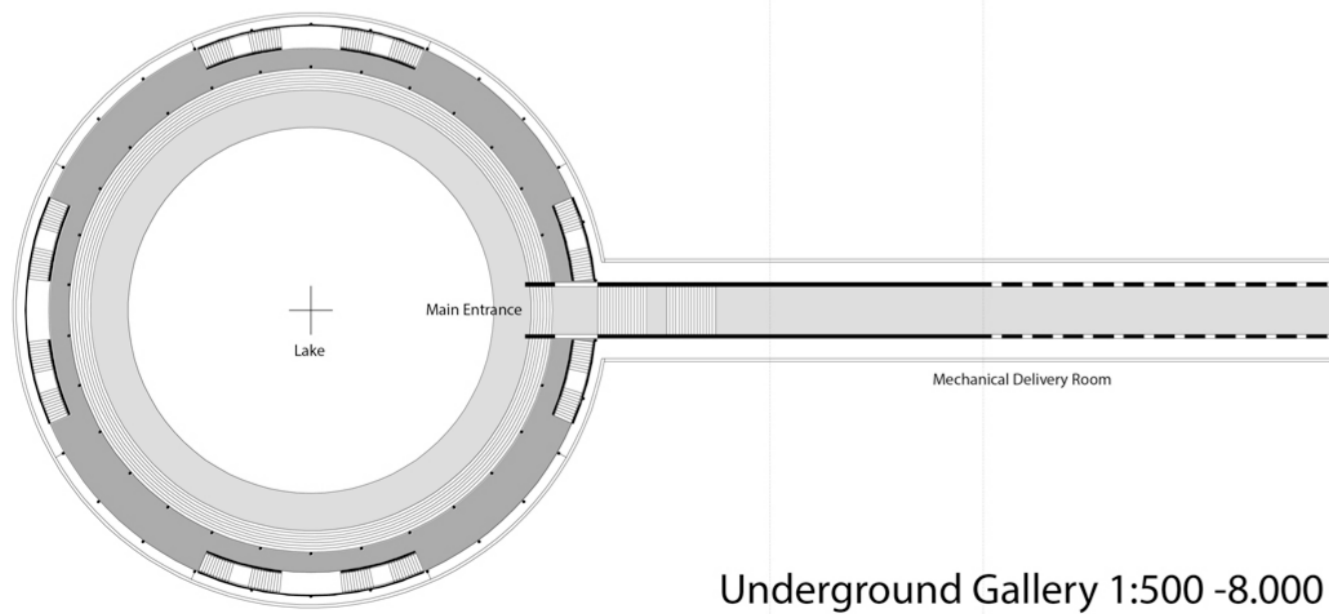
Spiral Ramp Gallery

Wire Gallery

The Cue and the core

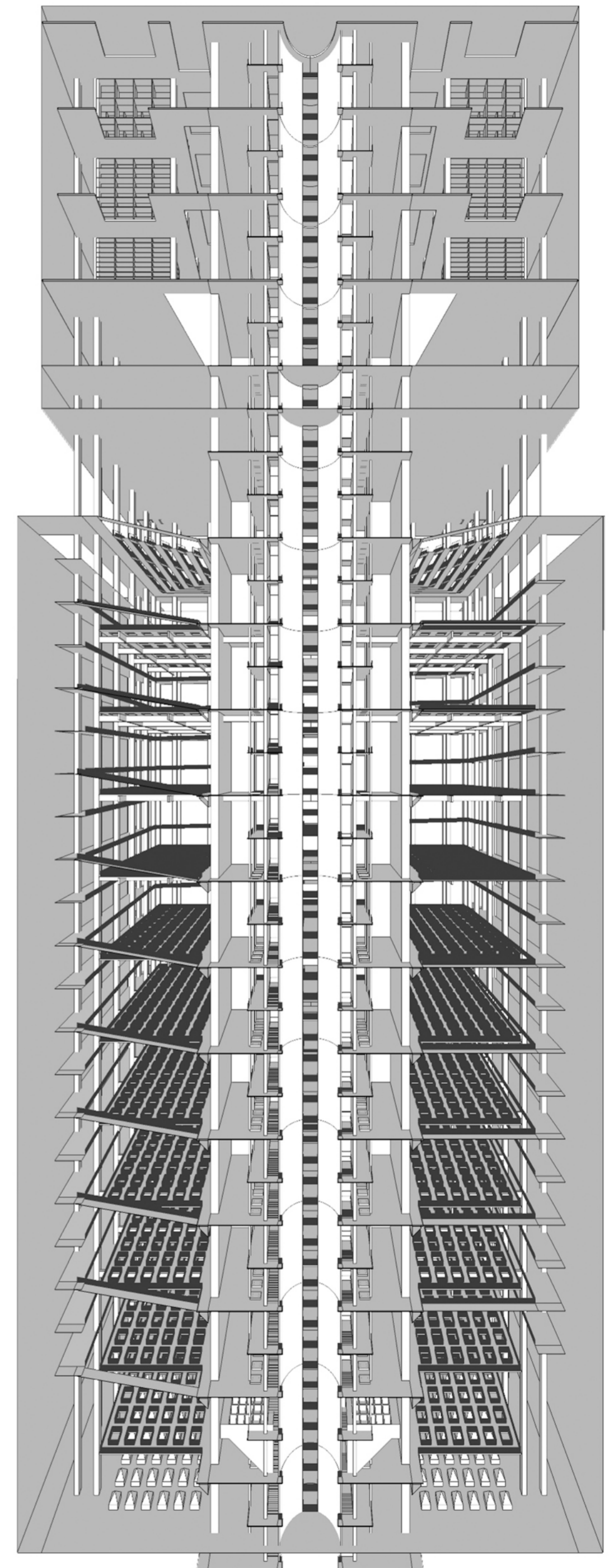


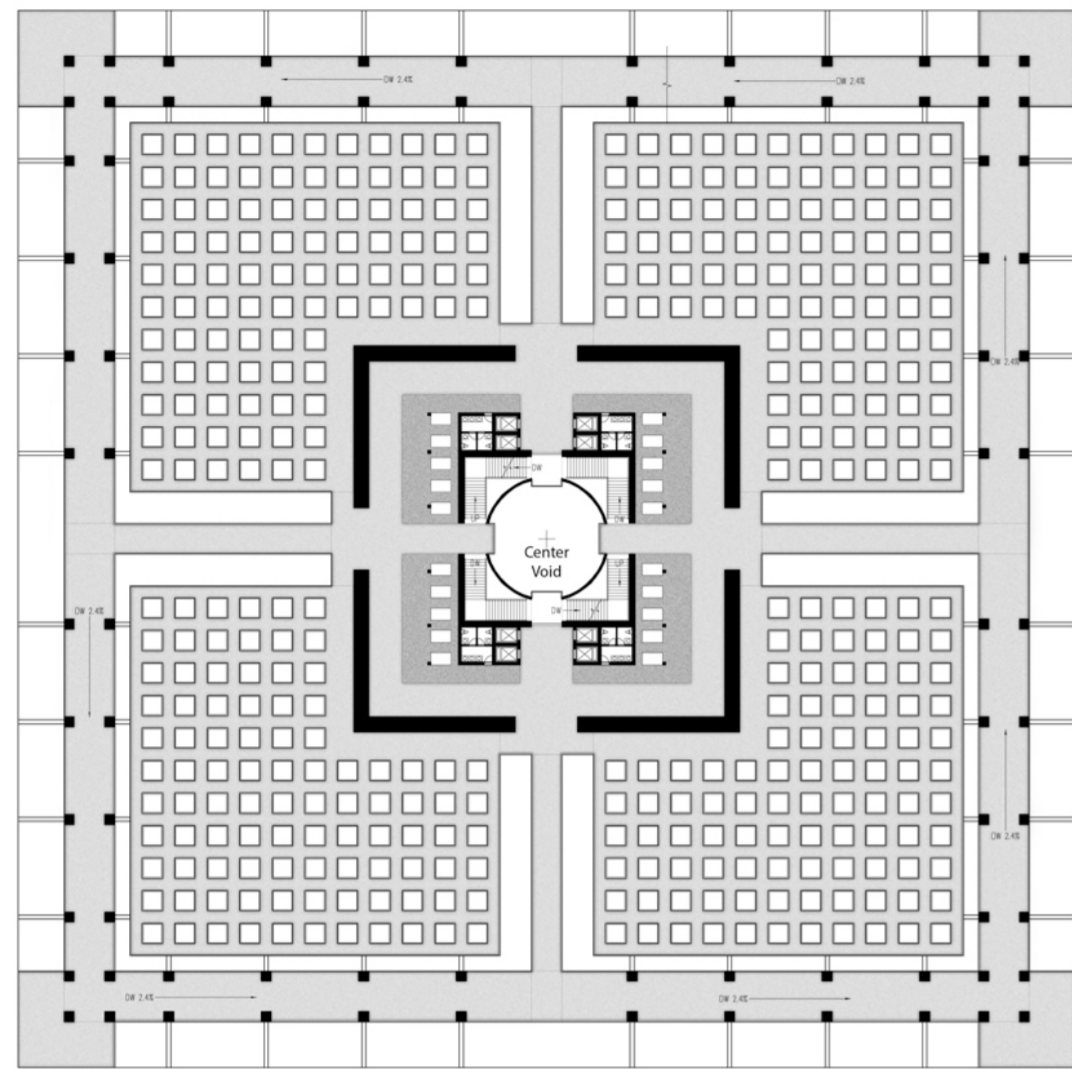
Gallery Tower Master Plan 1:2000



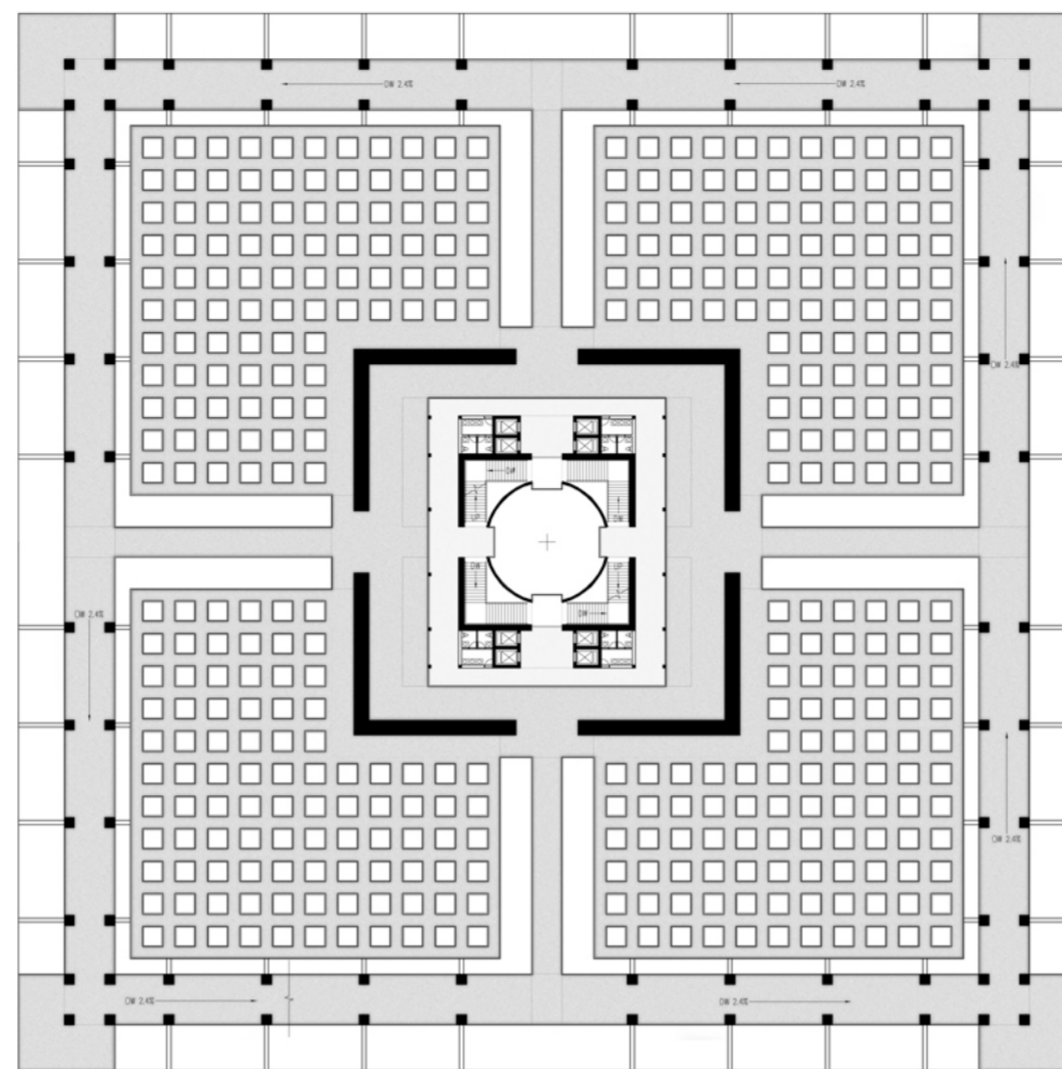
Underground Gallery 1:500 -8.000

New York Two Tower City
A futuristic fantasy in Manhattan Island in 2050

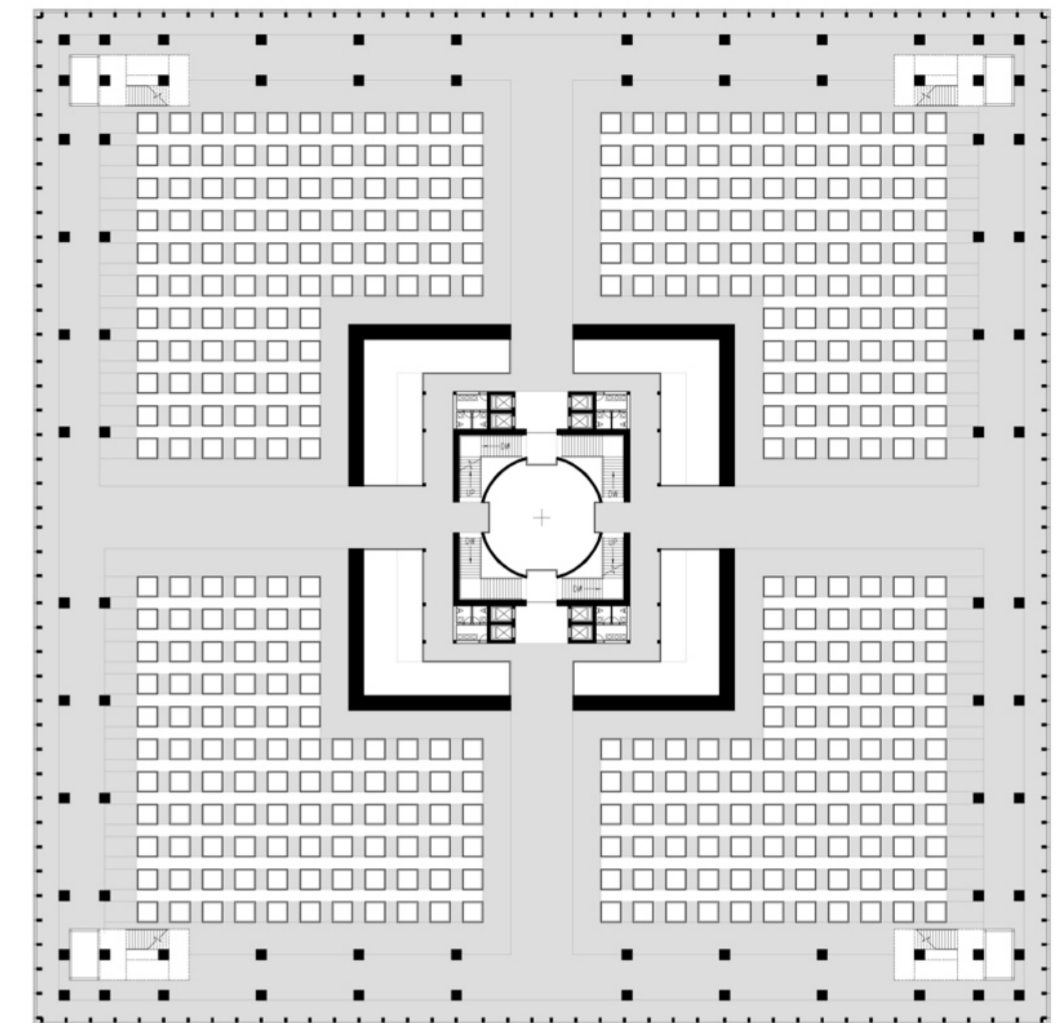




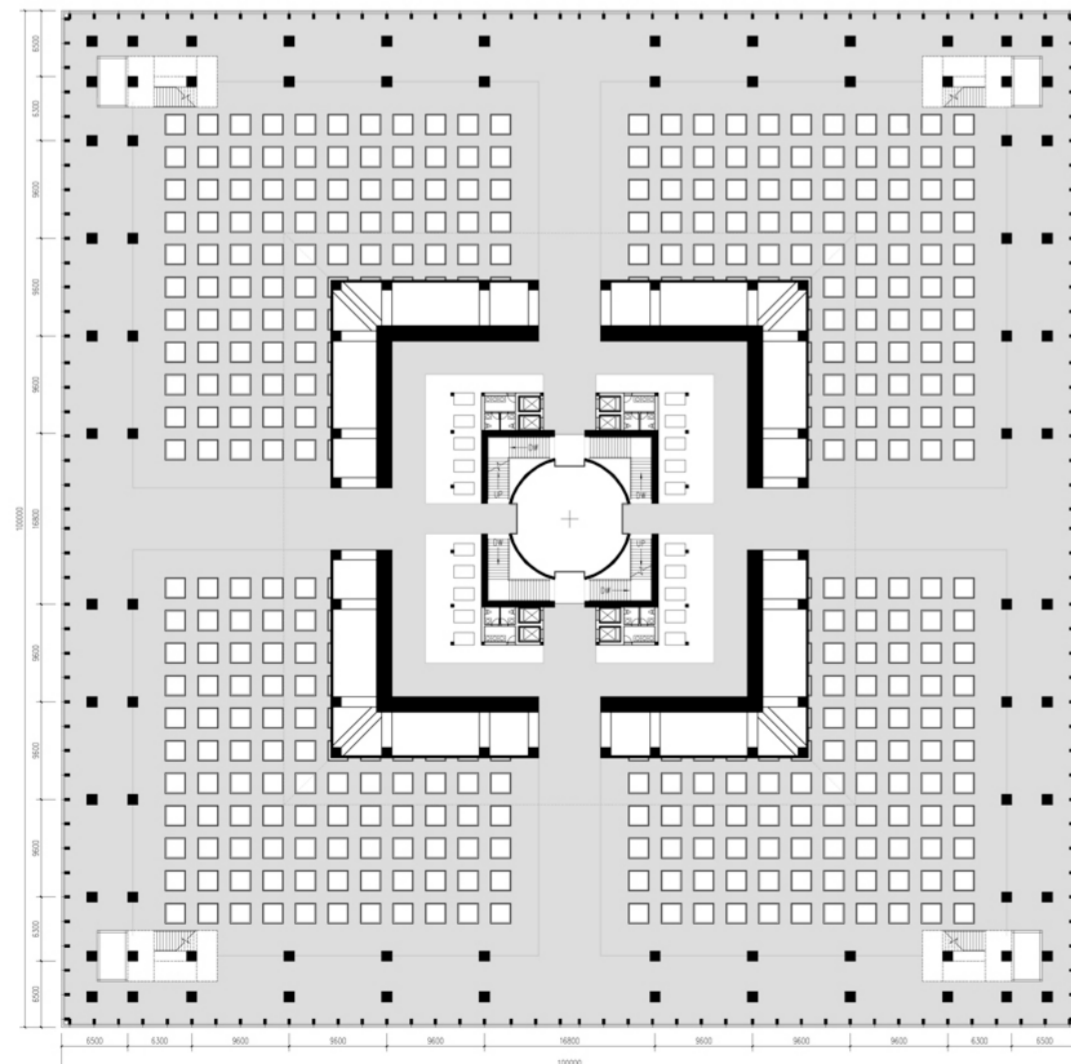
Underground Gallery 1:500 -16.000



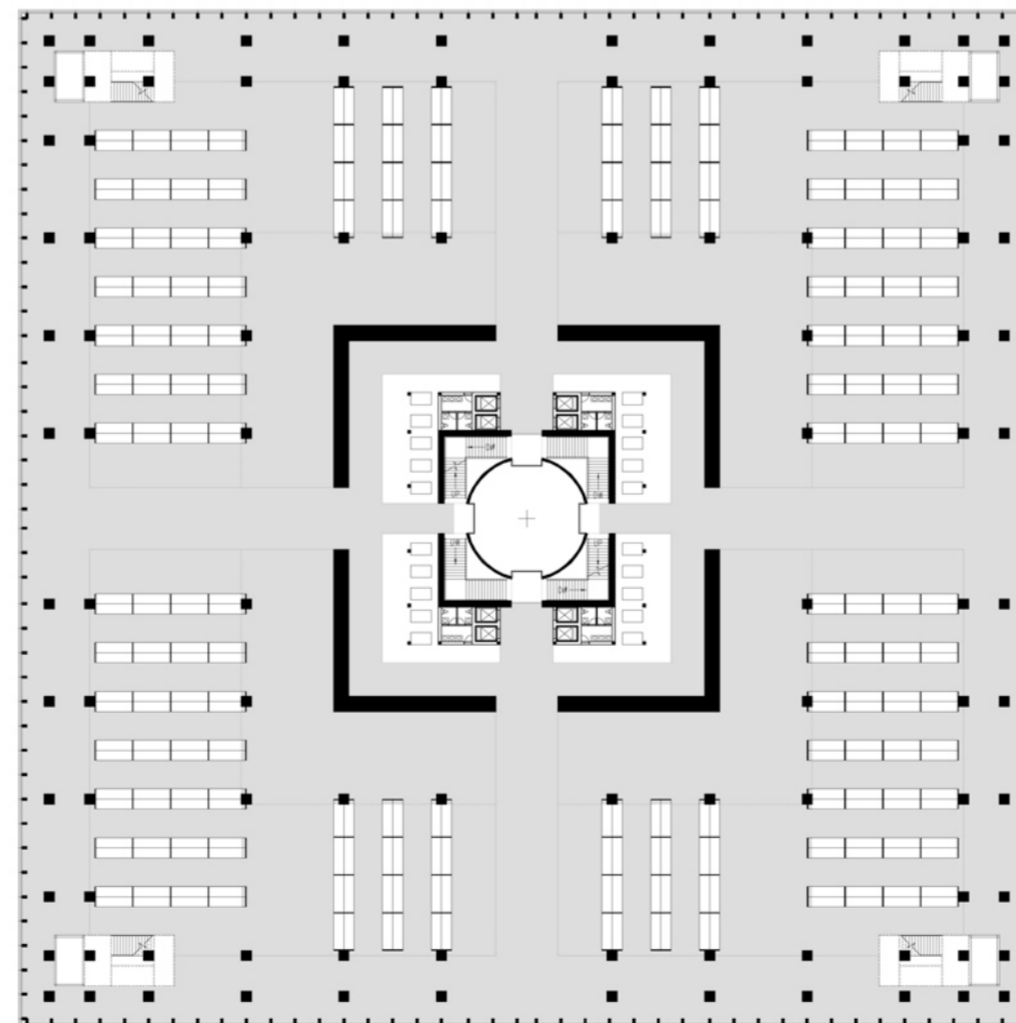
Underground Gallery 1:500 -12.000



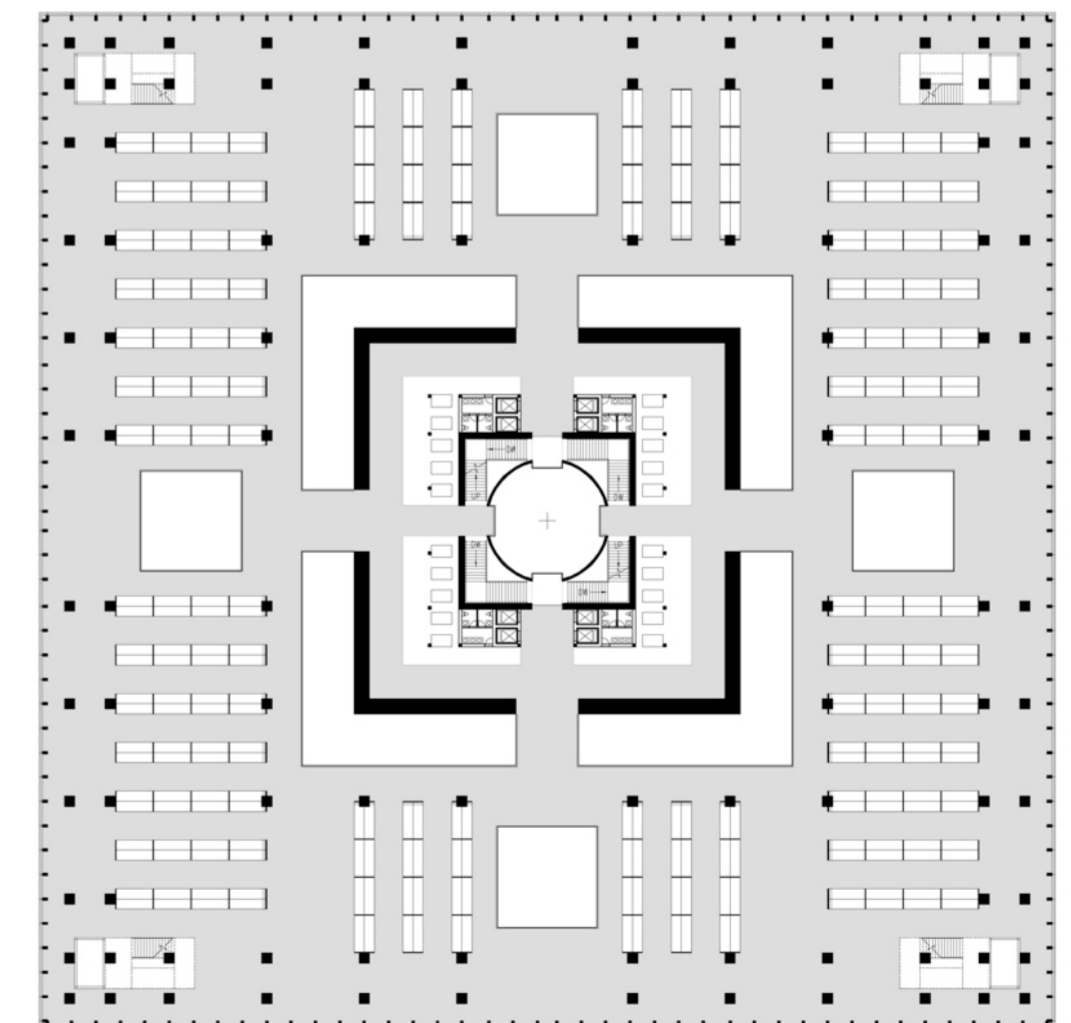
Collection Plan 1:500 +20.000



Gallery Plan 1:500 +28.000



Archive Plan 1:500 +44.000

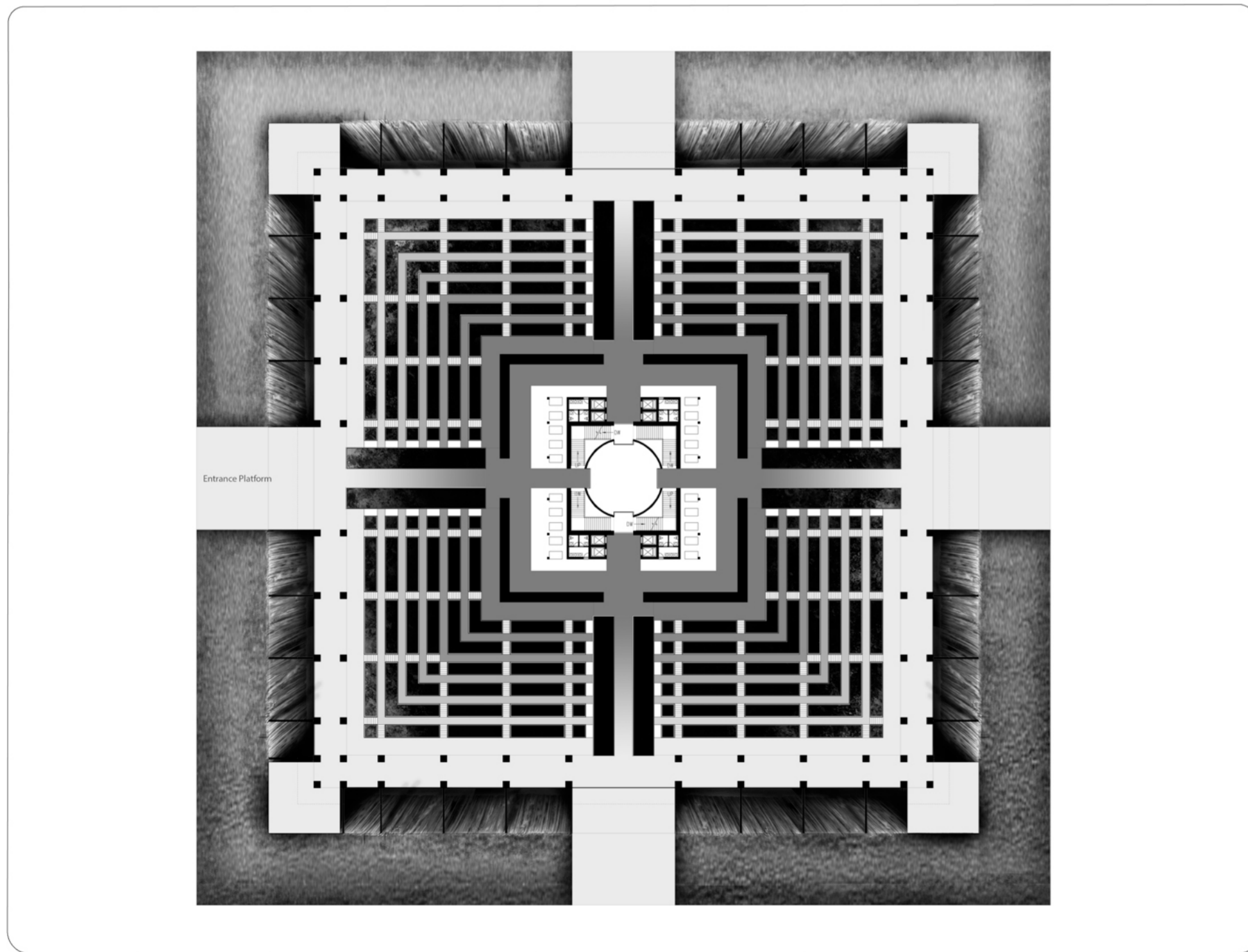
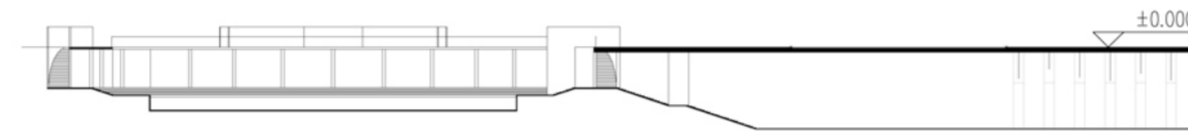


Archive Plan 1:500 +60.000

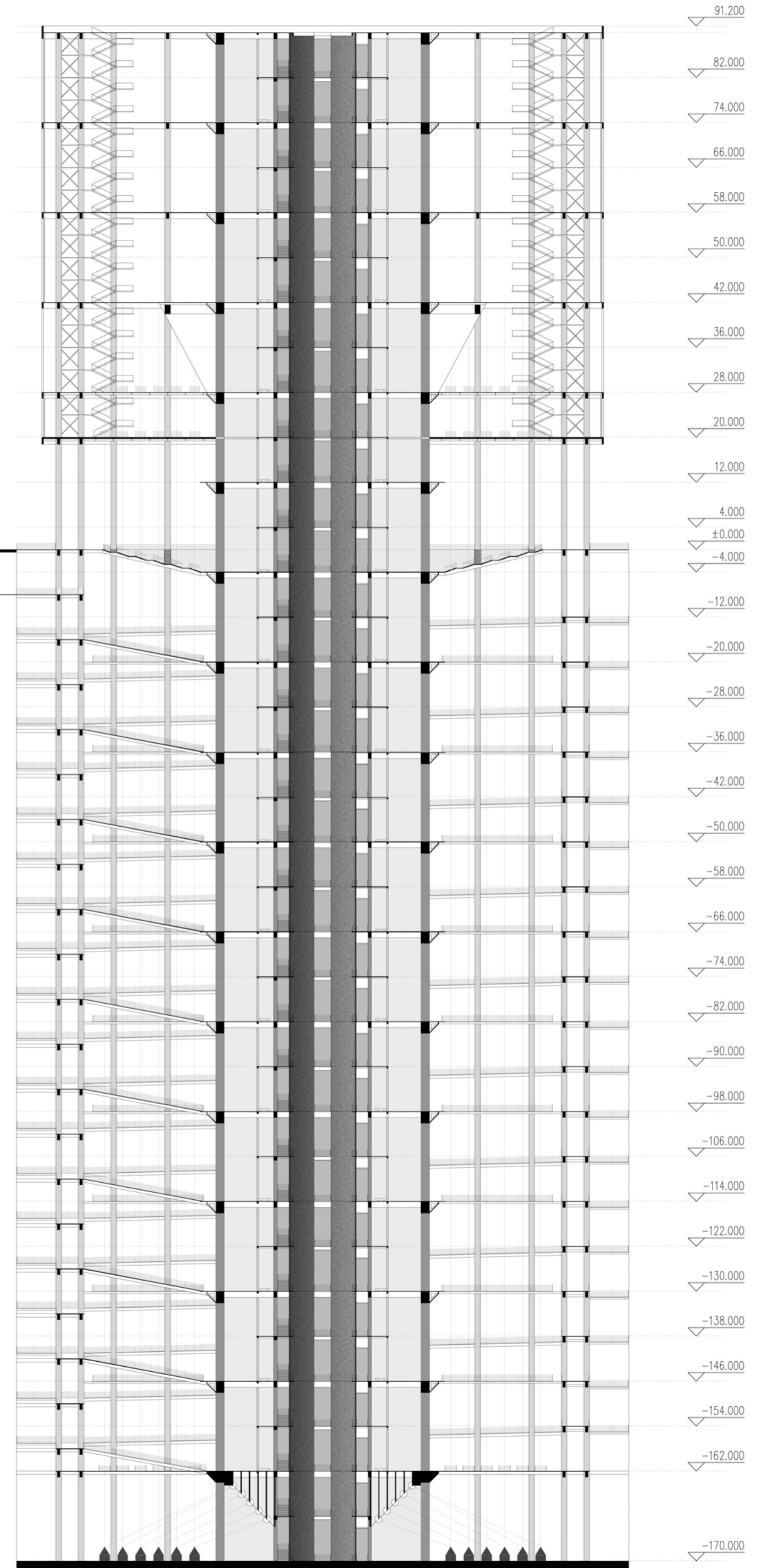




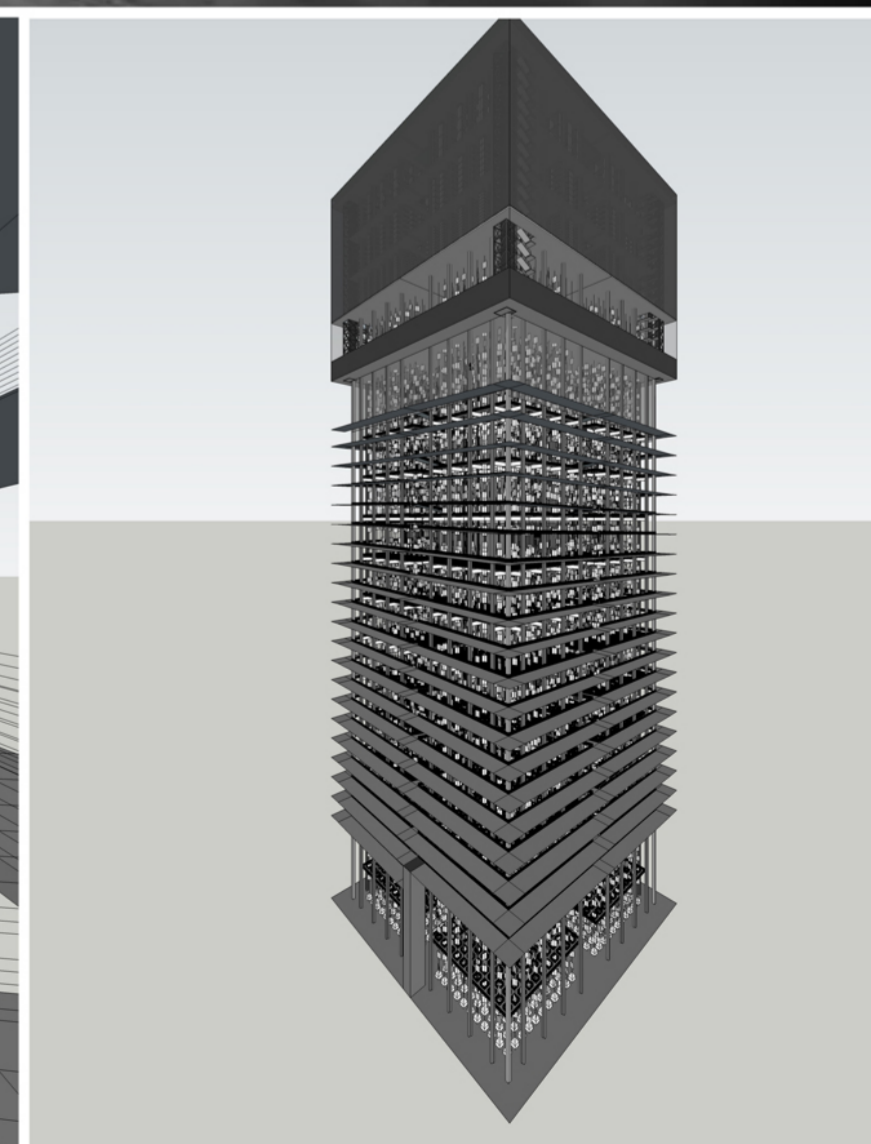
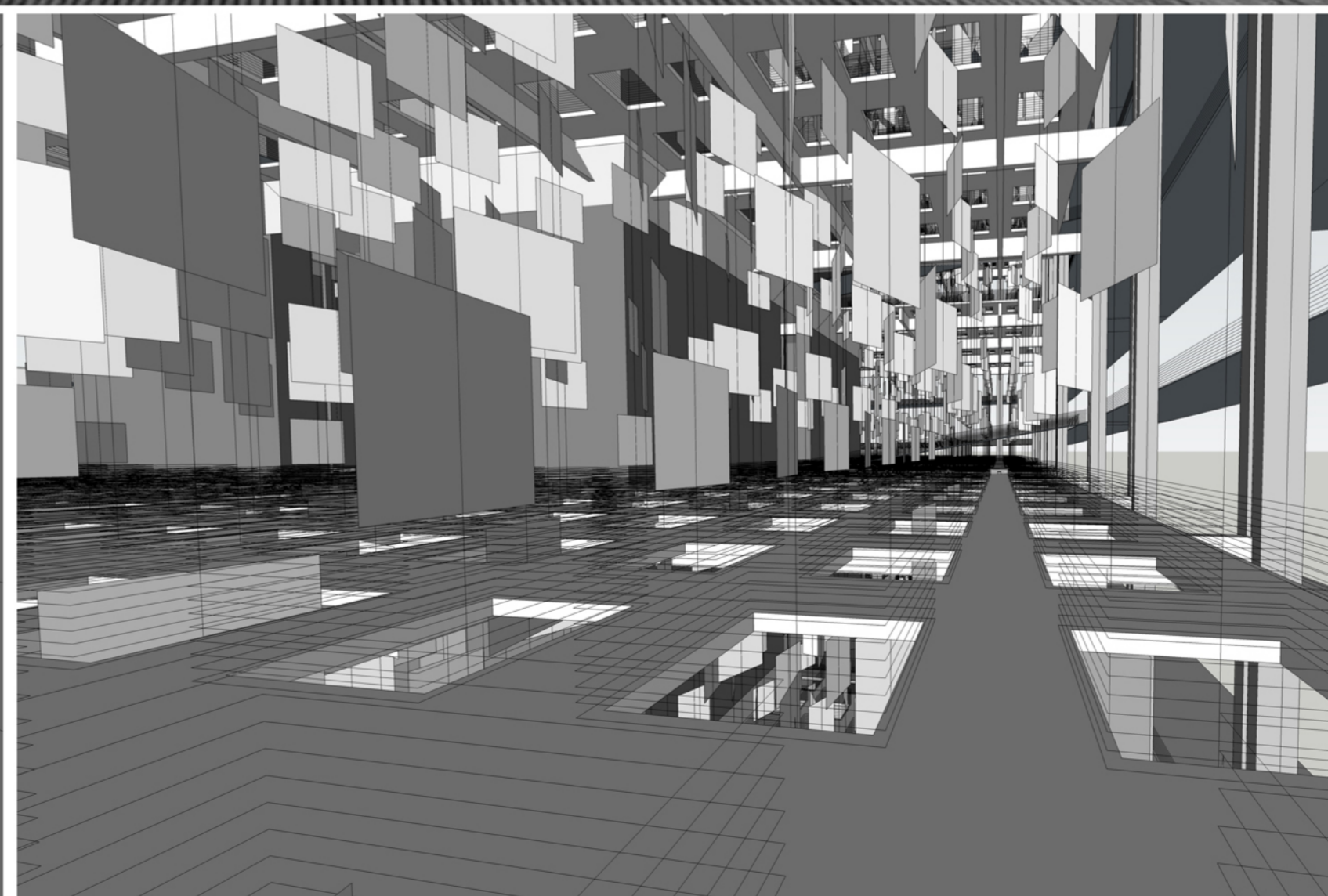
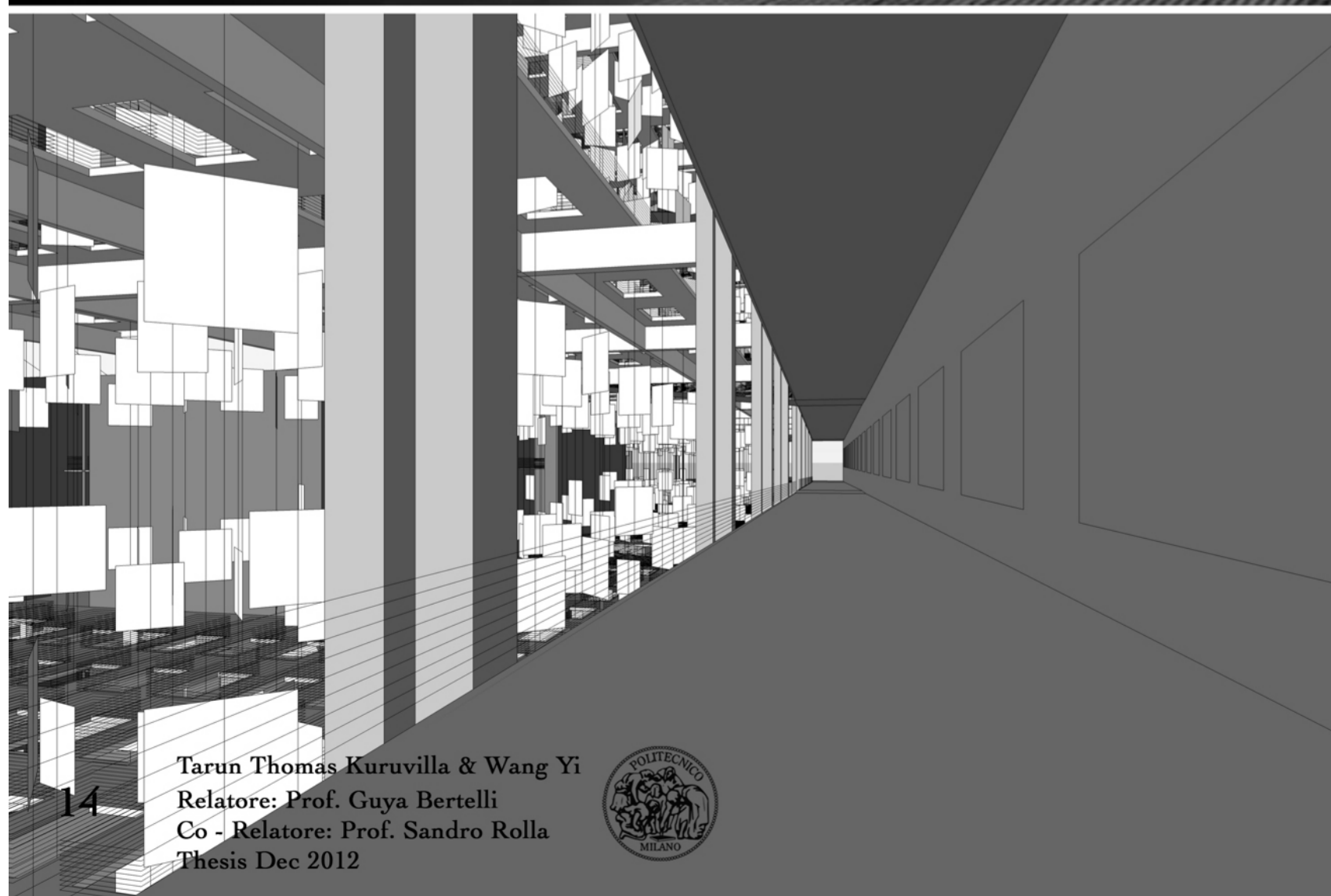
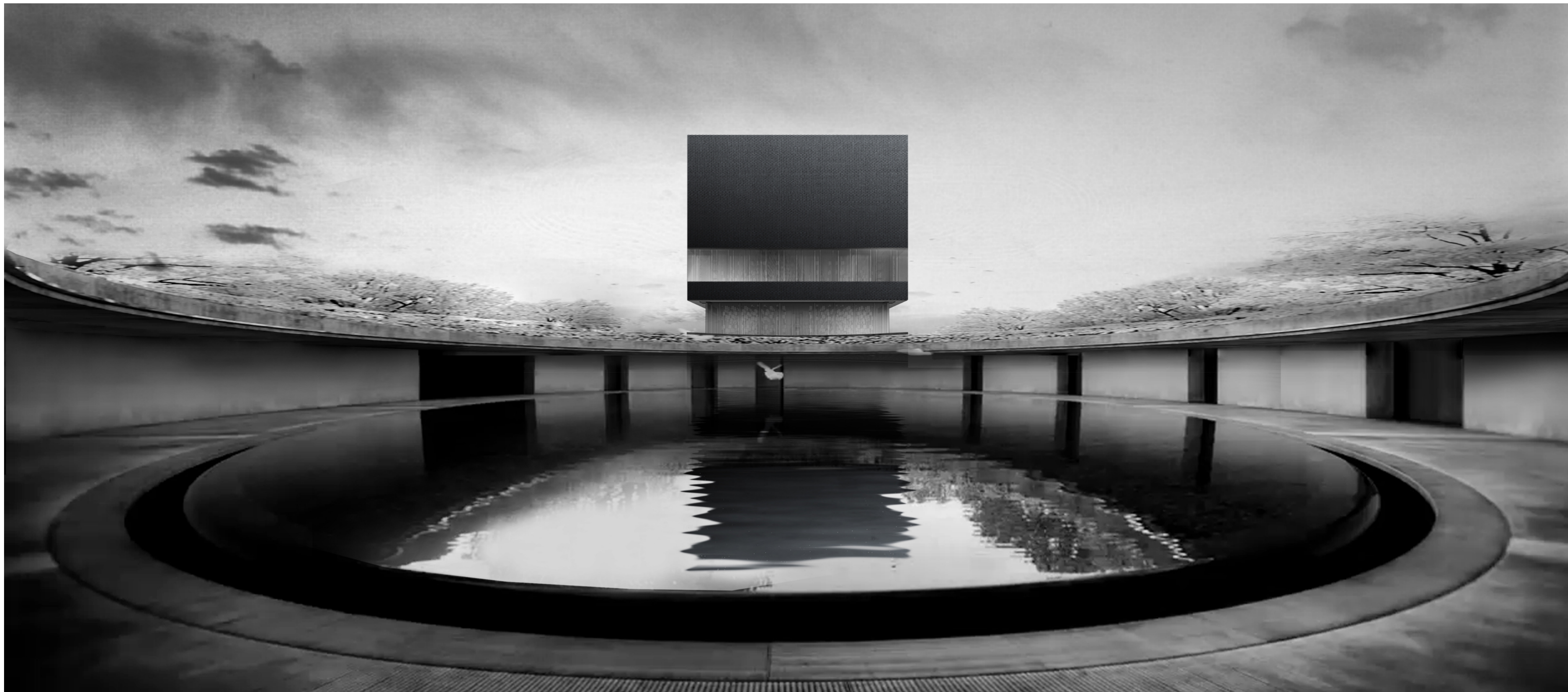
Entrance View

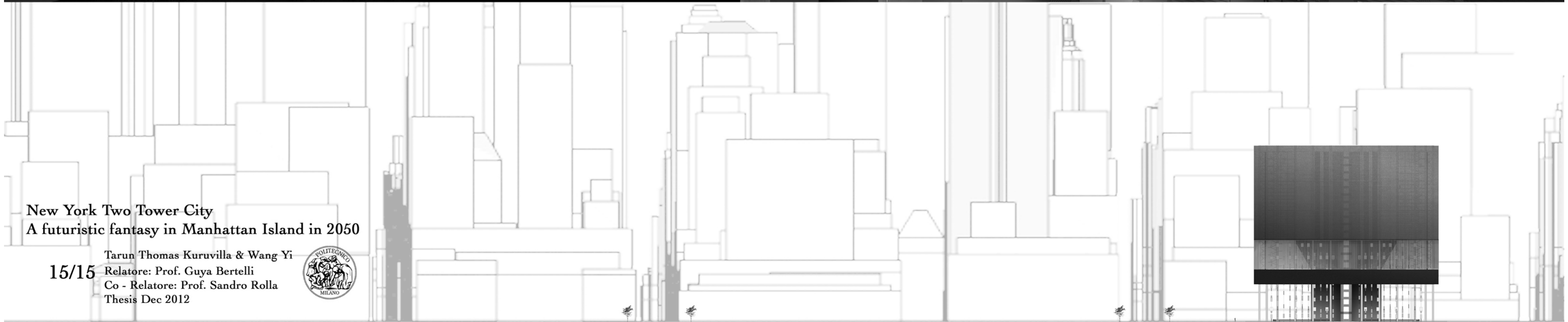


Ground Open Gallery 1:500 +/-0.000



Section 1:500





New York Two Tower City
A futuristic fantasy in Manhattan Island in 2050

15/15 Tarun Thomas Kuruvilla & Wang Yi
Relatore: Prof. Guya Bertelli
Co - Relatore: Prof. Sandro Rolla
Thesis Dec 2012

