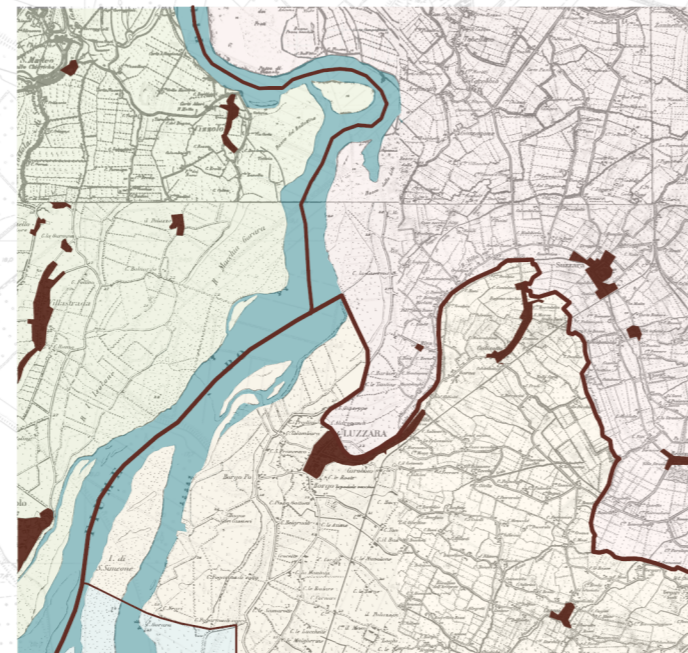
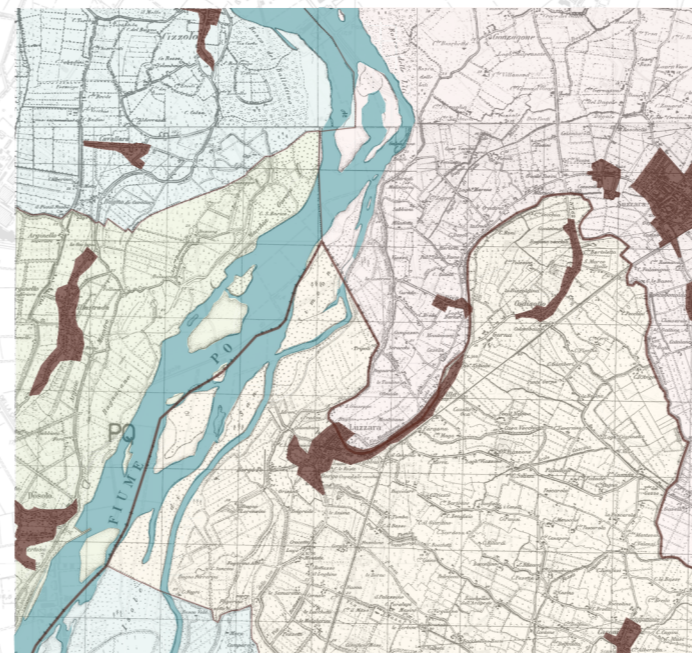


1702

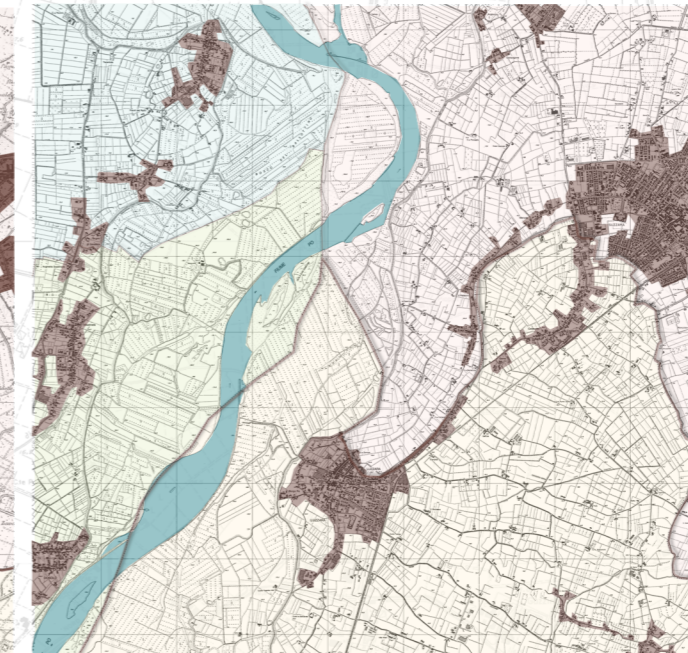
1702, CARTA DEL DUCATO DI MANTOVA, 1702, PUBBLICATA DA J. B. NOLIN, GEOGRAFO ORDINARIO DEL RE A PARIGI, ASMN, RACCOLTA CIMELI, B. 15



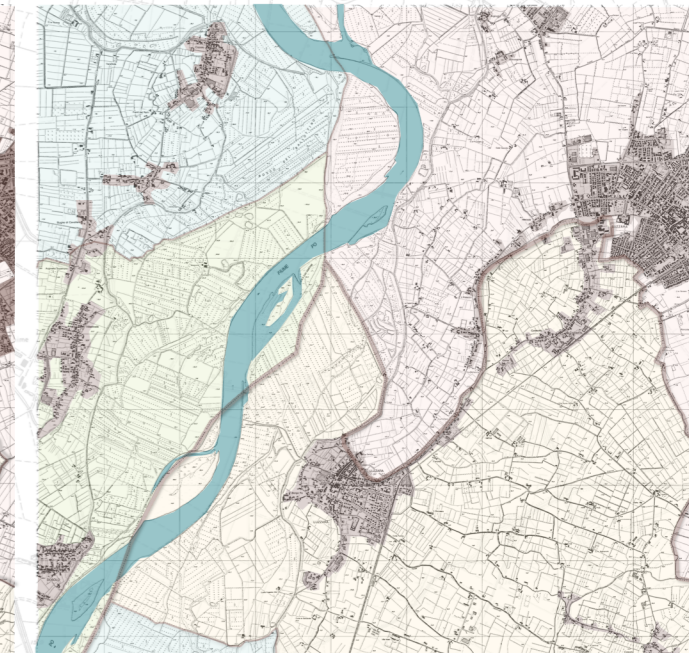
EVOLUZIONE STORICA: I CONFINI E L'EDIFICATO, IGM ANNO 1885-1888, SCALA 1:100000



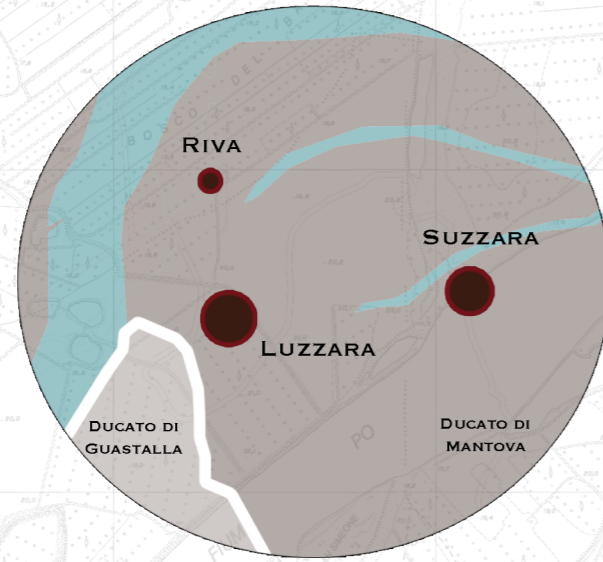
EVOLUZIONE STORICA: I CONFINI E L'EDIFICATO, IGM ANNO 1933-1935, SCALA 1:100000



EVOLUZIONE STORICA: I CONFINI E L'EDIFICATO, CTR ANNO 1982, SCALA 1:100000

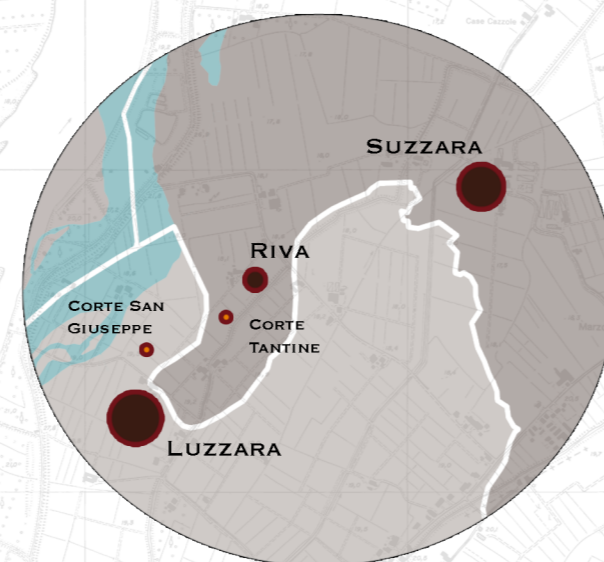


EVOLUZIONE STORICA: I CONFINI E L'EDIFICATO, SU CTR ANNO 1994, AGGIORNAMENTO DA CATASTALE 2009, SCALA 1:100000

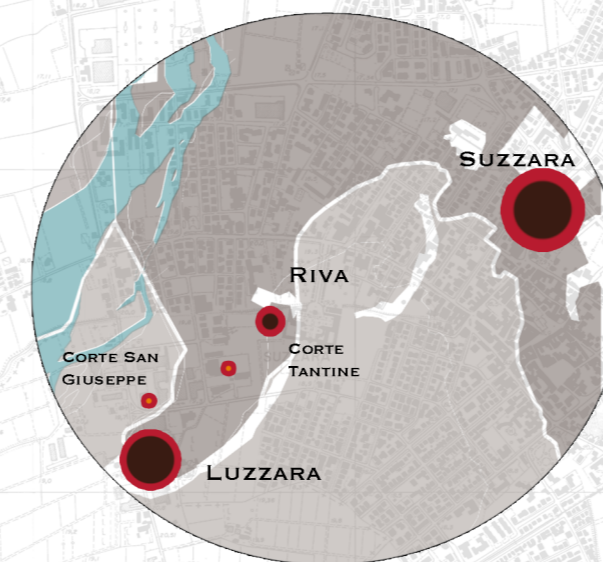


1733-35

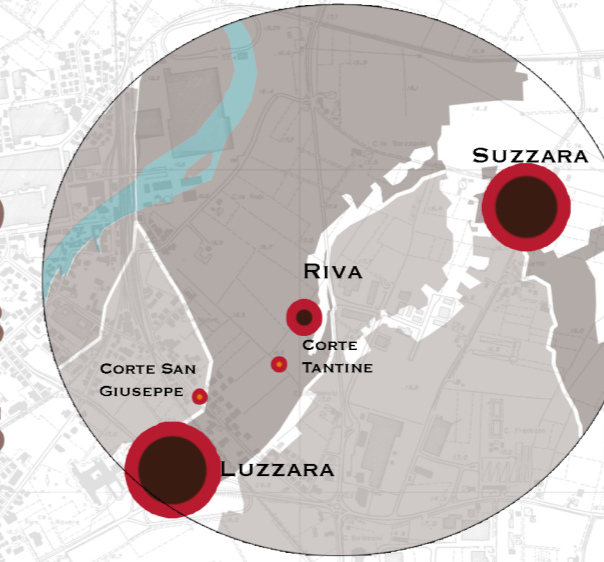
1733-35, DUCATUS MANTUANUS CEU SEDIS BELLI, ASMN, RACCOLTA DI CIMELI, B. 23



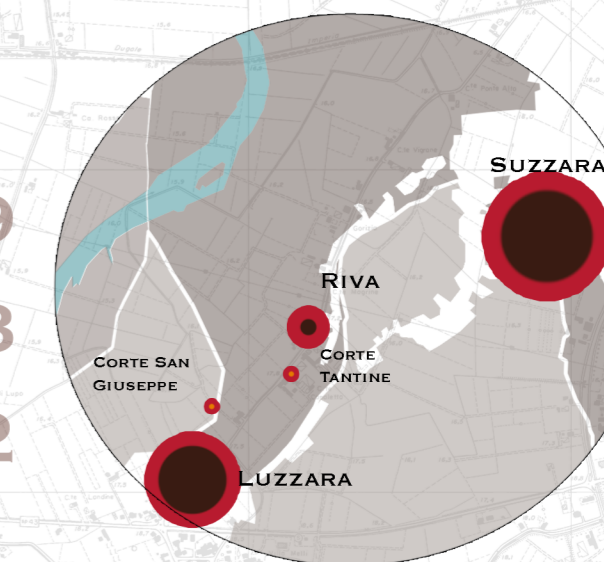
1888



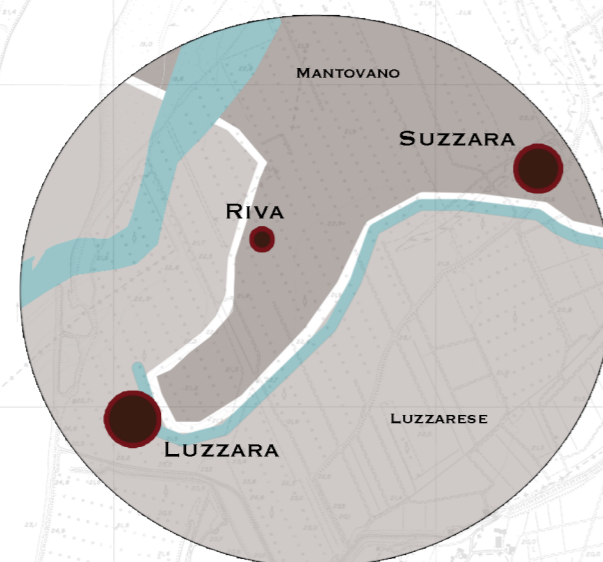
1935



1982

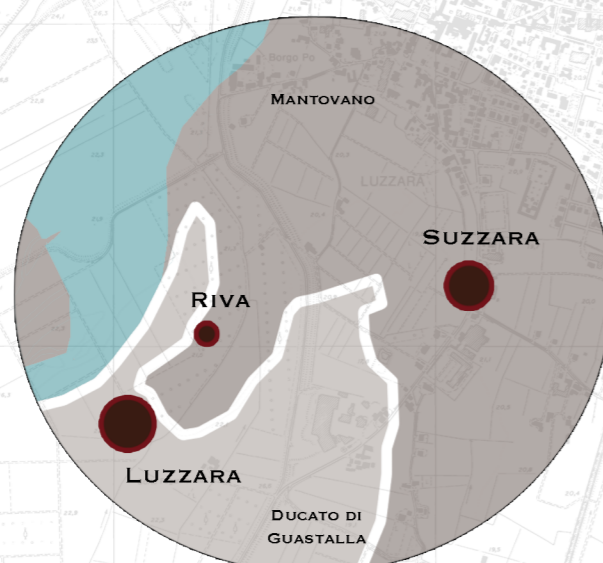


2009



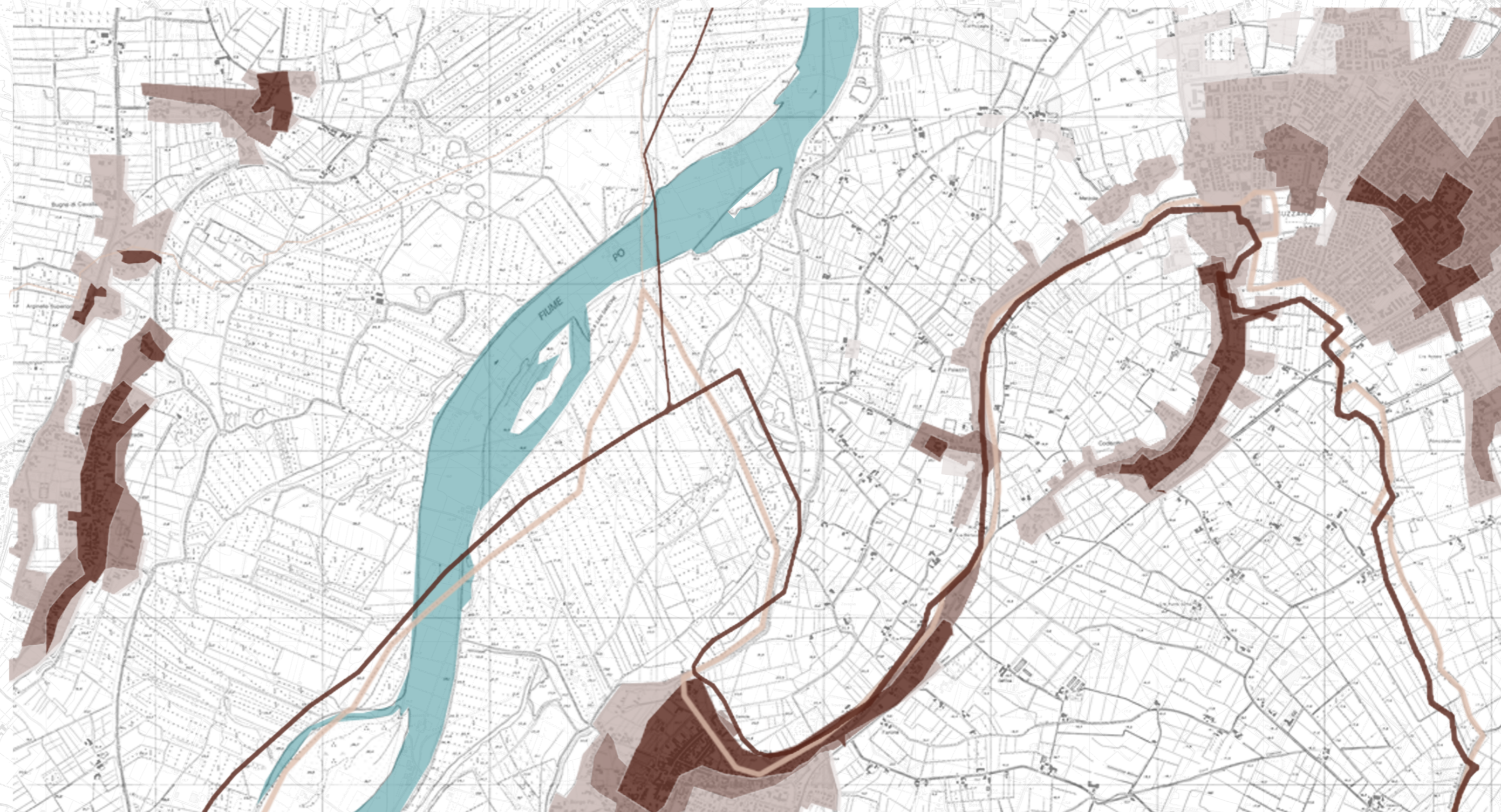
1778

1778, ASMN, MCA, B.263, SCALA 1:100000



1807

1807, "NUOVA CARTA TOPOGRAFICA DEL MANTOVANO E SUE ADIACENZE", F. BORDIGA INCISORE, ASMN, RACCOLTA CIMELI, B. 4 1:100000



MAPPA SINOTTICA, EVOLUZIONE CONFINI GEOGRAFICI E EDIFICATO DAL 1885 AL 2009, MONTAGGIO SU CTR 1994, SCALA 1:25000