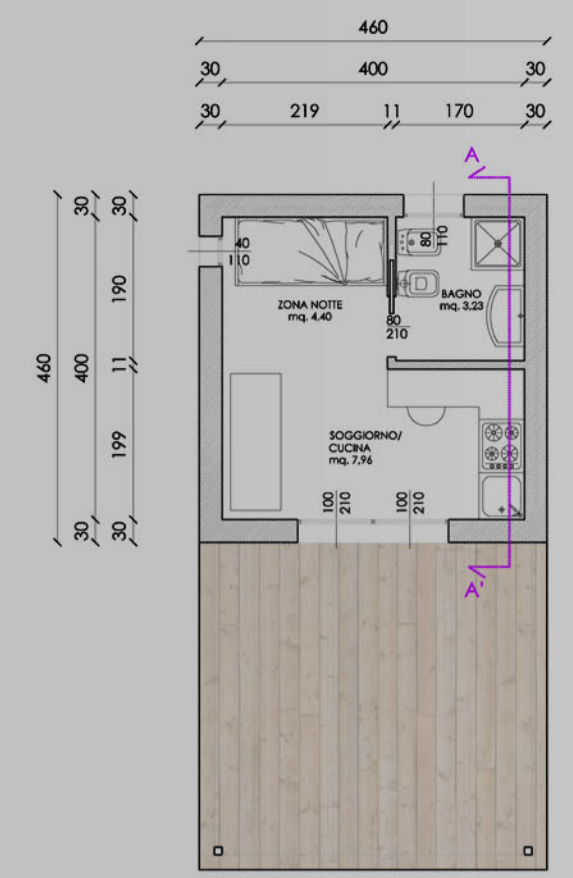
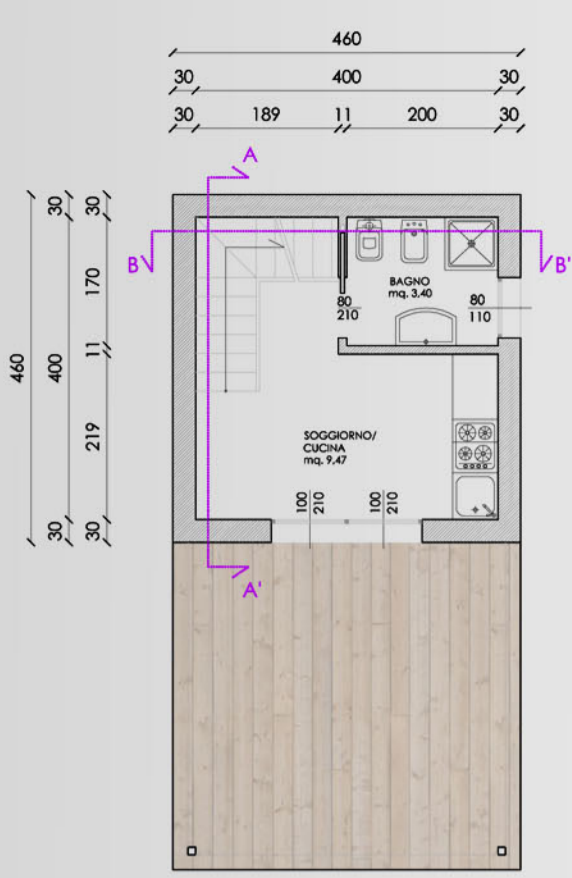


TIPOLOGIA\_A  
mq. 15,67  
modulo 4,60x4,60



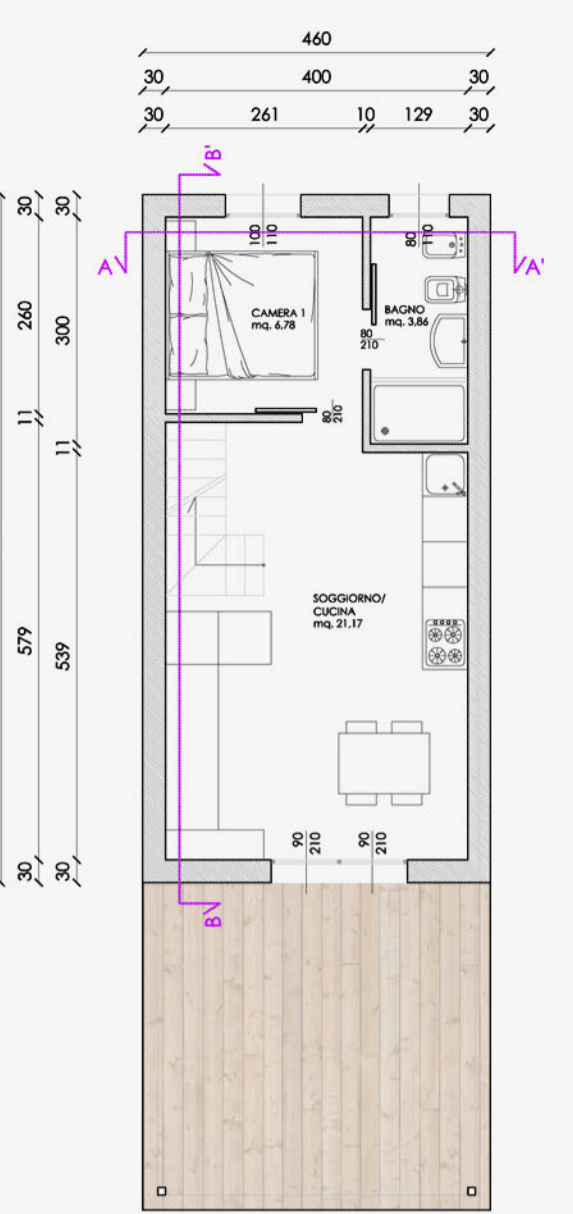
PIANTA PIANO TERRA  
livello h. 3.10mt

TIPOLOGIA\_B  
mq. 26,27  
modulo 4,60x4,60

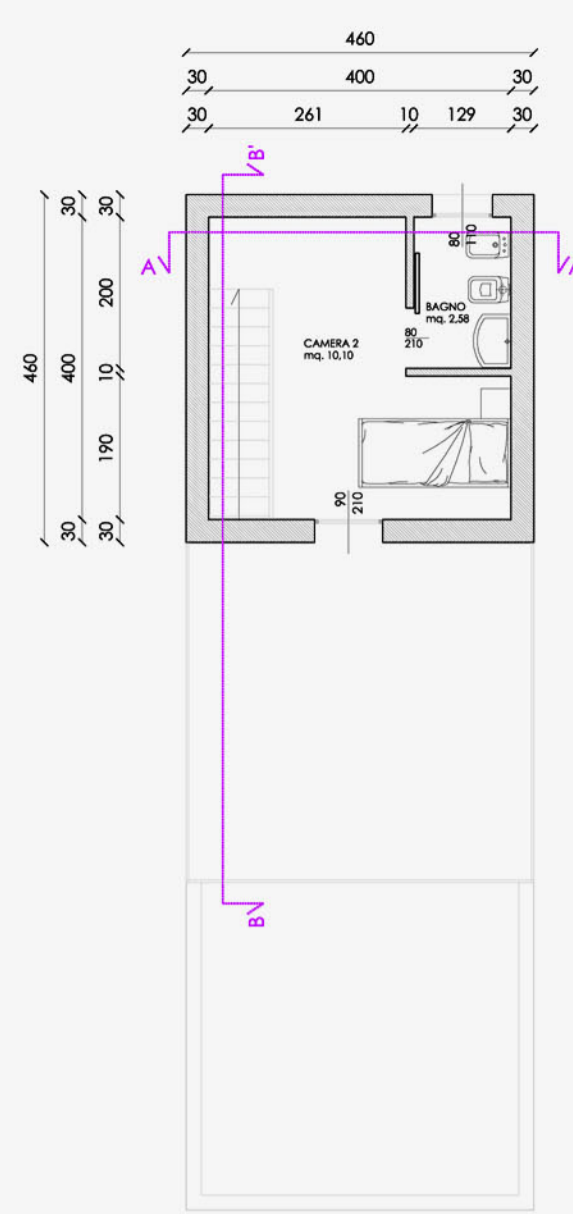


PIANTA PIANO TERRA  
livello h. 3.10mt

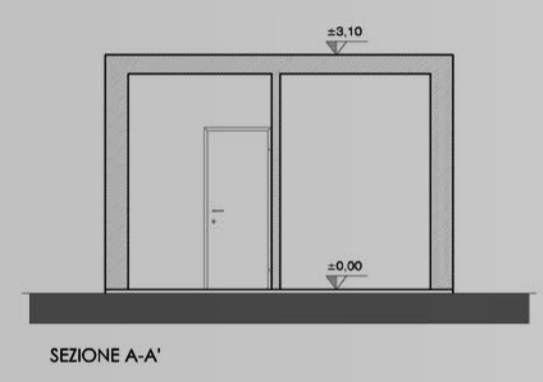
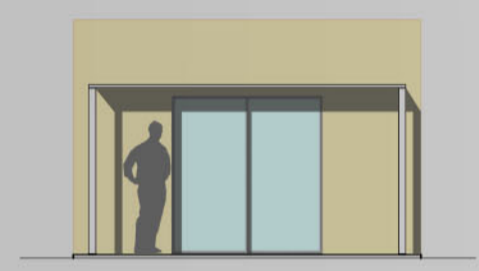
TIPOLOGIA\_C  
mq. 42,50  
modulo I 4,60x9,10  
modulo II 4,60x4,60



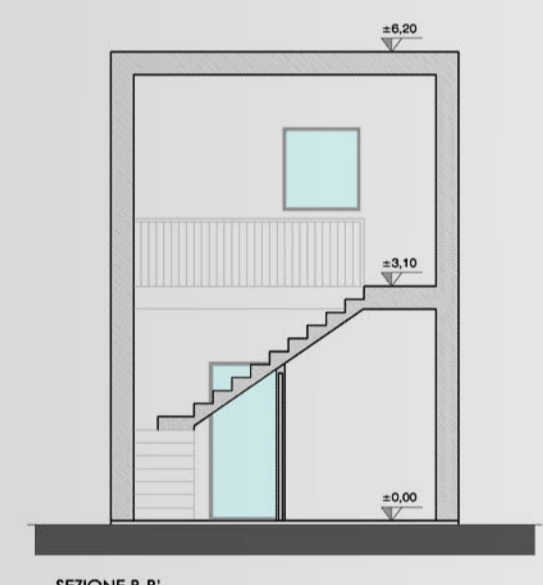
PIANTA PIANO TERRA  
livello h. 3.10mt



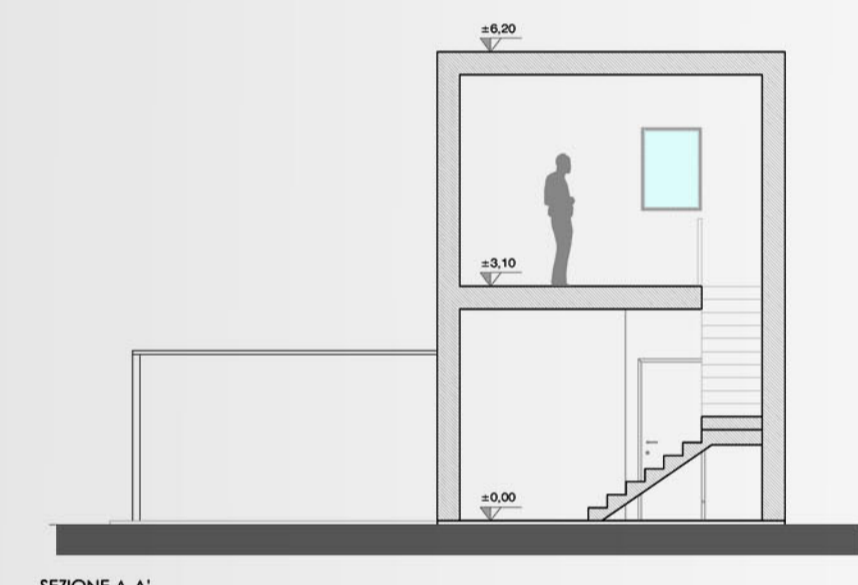
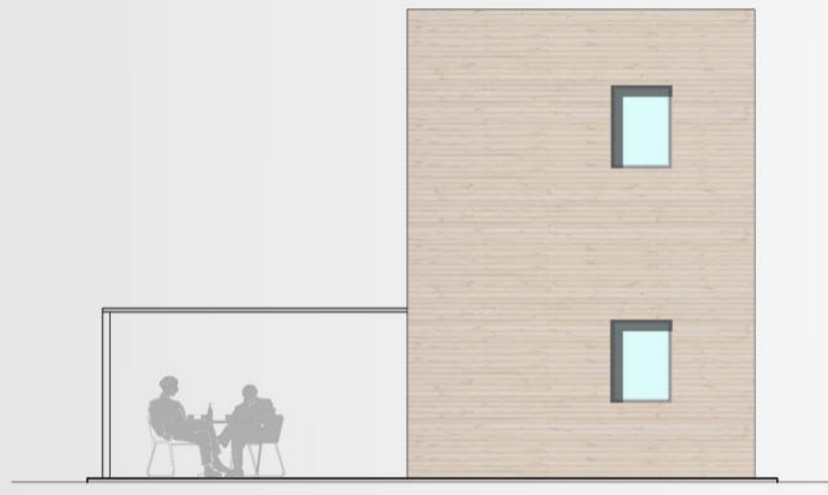
PIANTA PIANO PRIMO  
livello h. 3.10mt



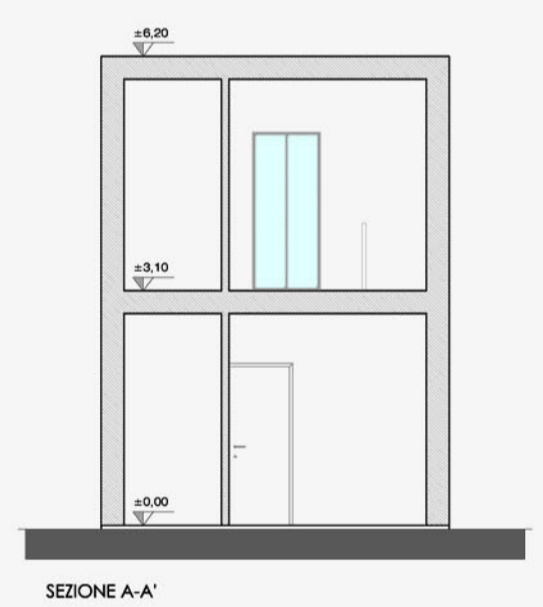
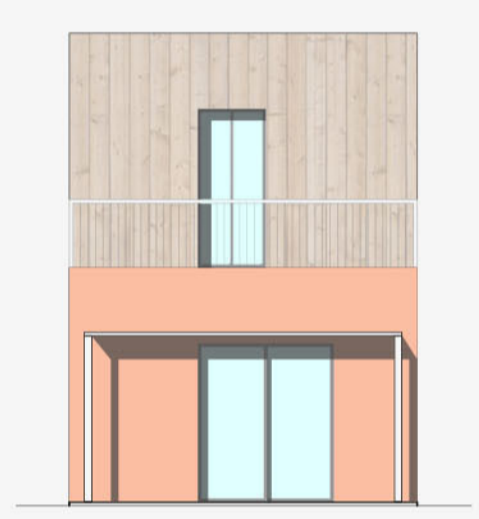
SEZIONE A-A'



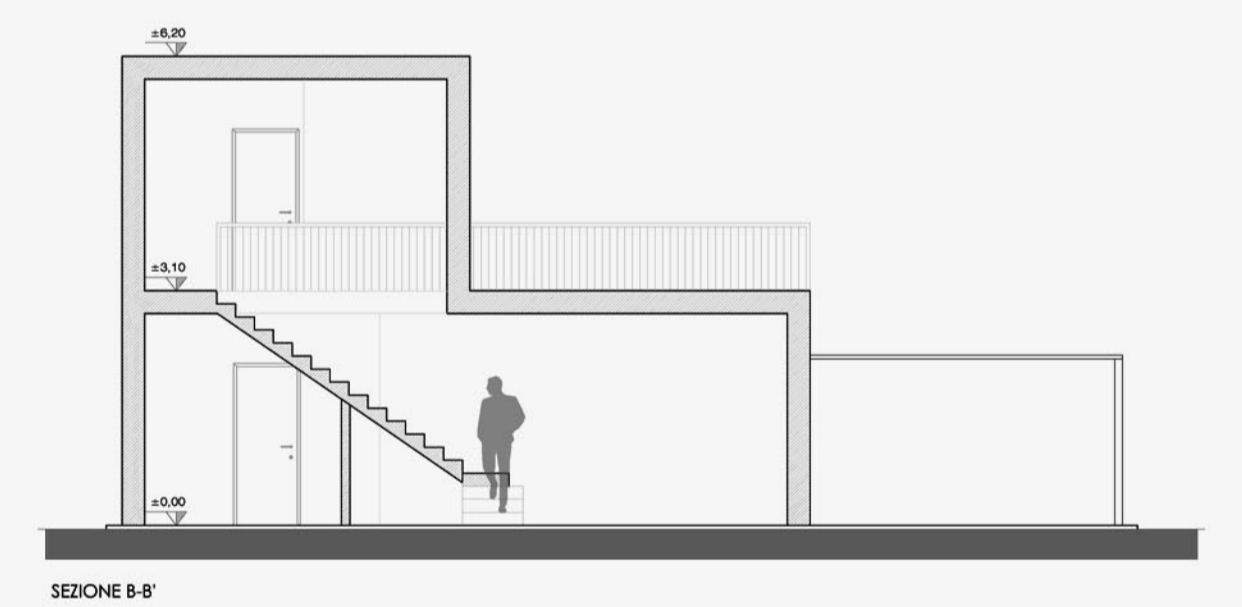
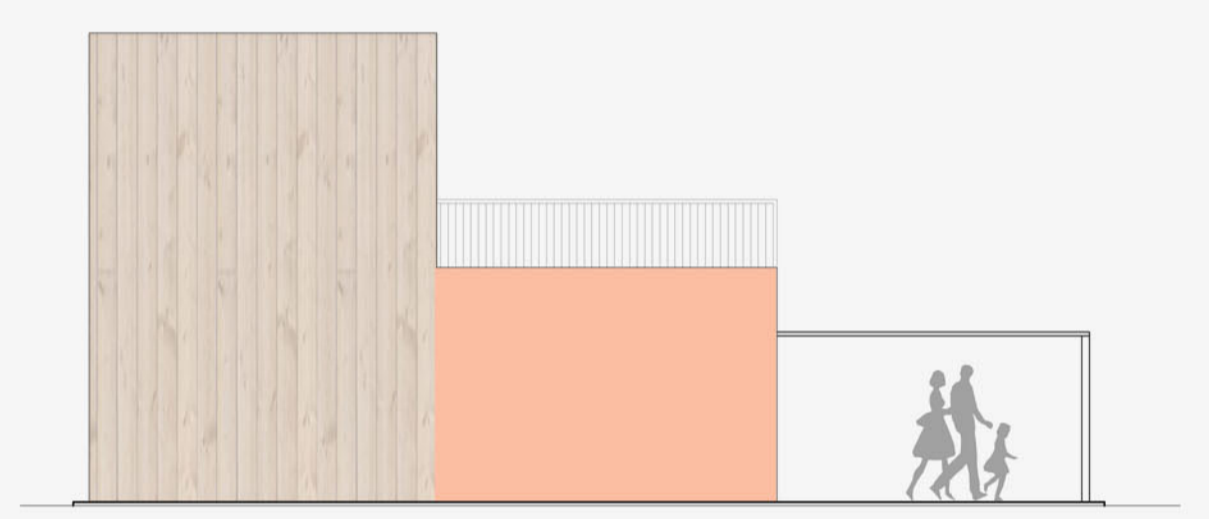
SEZIONE B-B'



SEZIONE A-A'

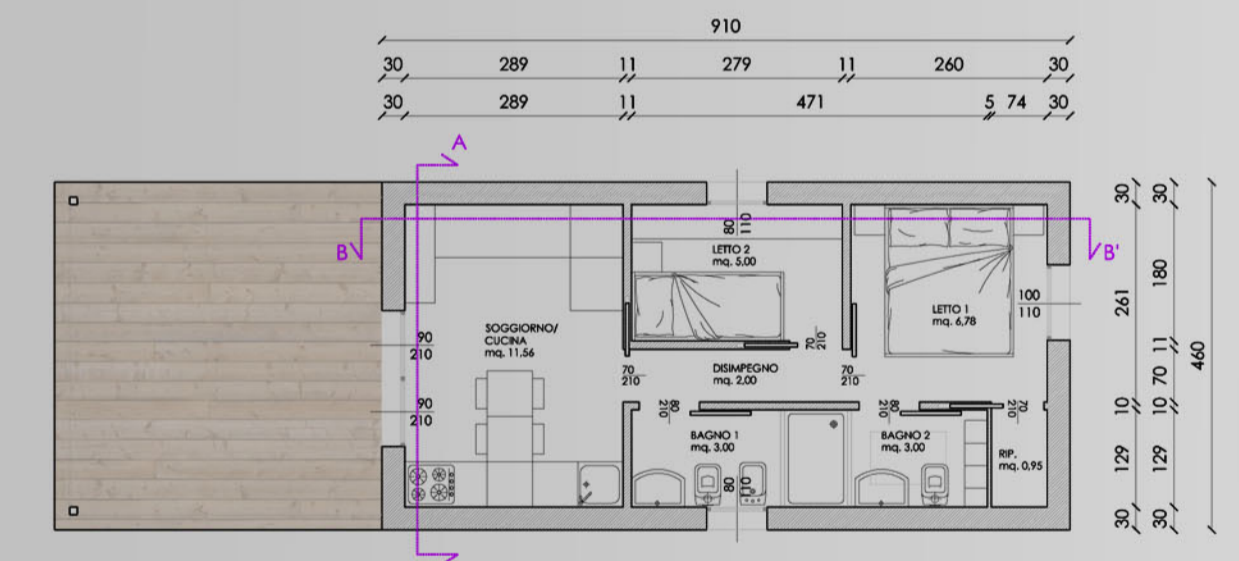


SEZIONE A-A'

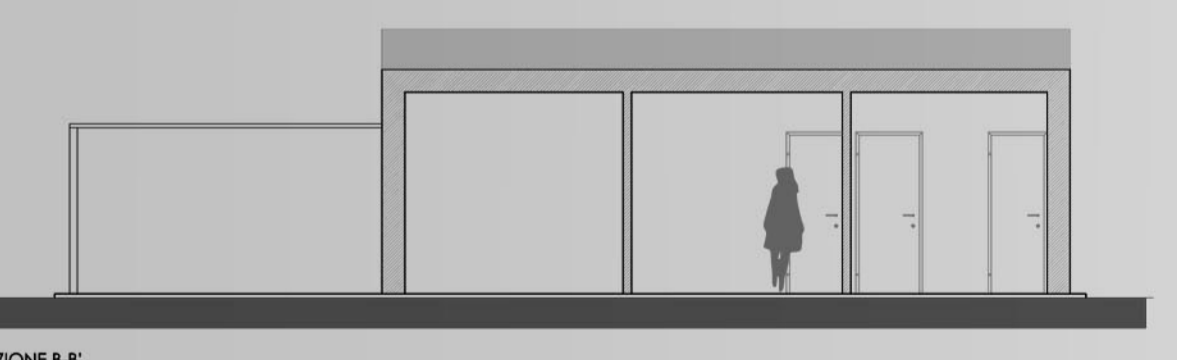


SEZIONE B-B'

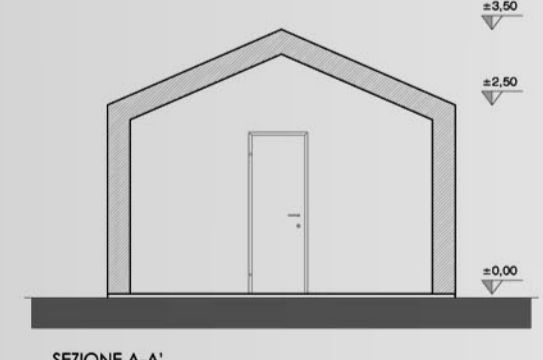
TIPOLOGIA\_D  
mq. 32,30  
modulo 4,60x9,10



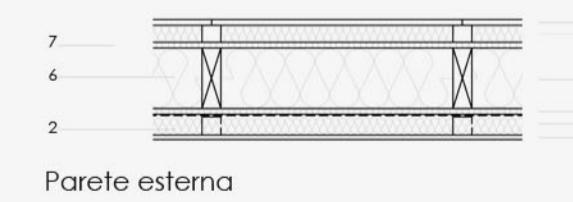
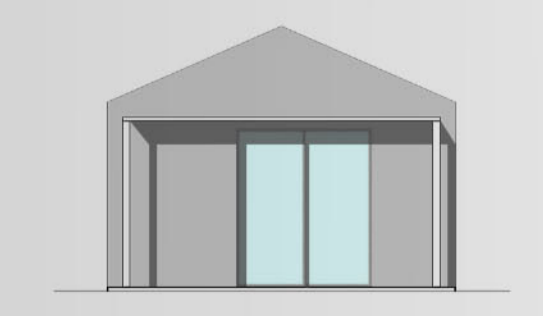
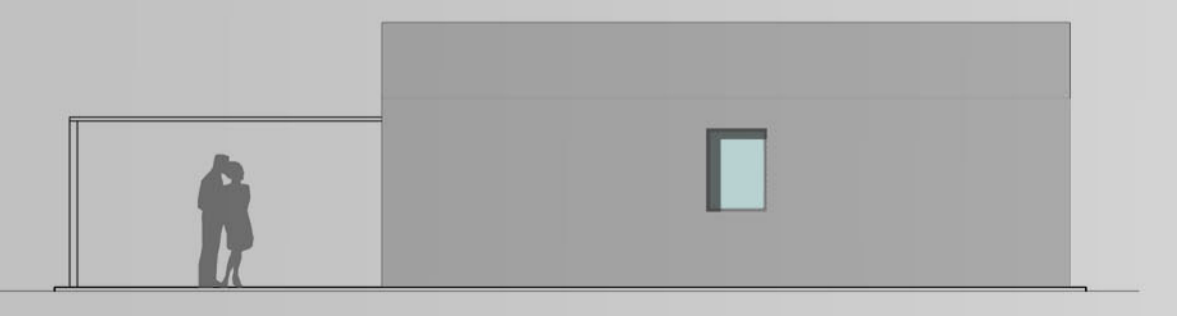
PIANTA PIANO TERRA  
livello h. 3.10mt



SEZIONE B-B'

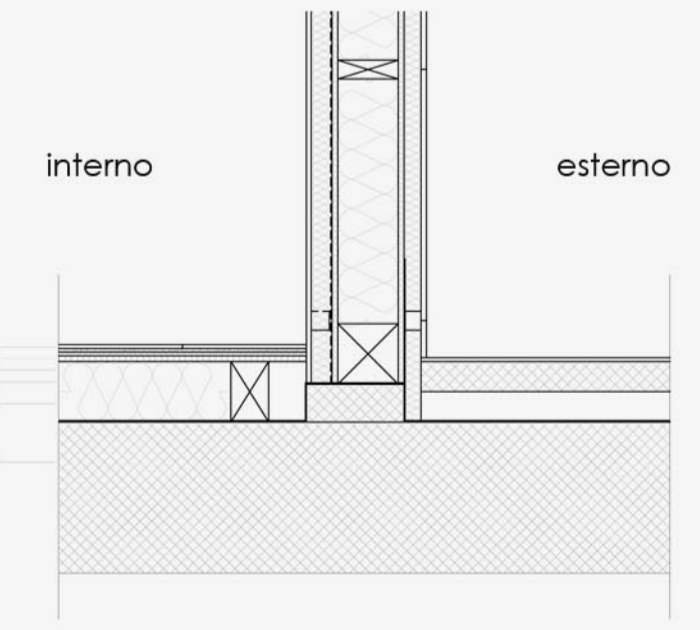


SEZIONE A-A'



Parete esterna

Stratigrafia:		Classe A (mm)
1_	fibregesso	10
2_	montanti metallici	50
3_	pannello isolante (fibra di legno)	50
4_	OSB 3	15
5_	montanti abete	160
6_	pannello isolante (fibra di legno)	160
7_	OSB 3	15
8_	coppetto (fibra di legno) rasato	40
9_	rivestimento in legno	20
		Spessore (cm) 30



Nodo parete esterna \ fondazione

Stratigrafia:	
1_	pavimentazione
2_	lastra fibregessa
3_	materasso acustica
4_	OSB
5_	riempimento a secco
6_	platea di fondazione