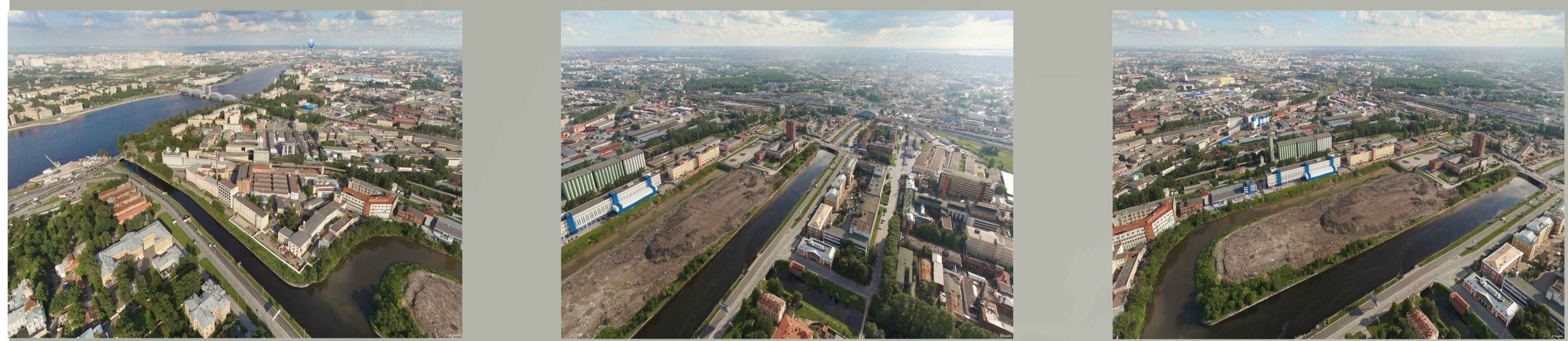
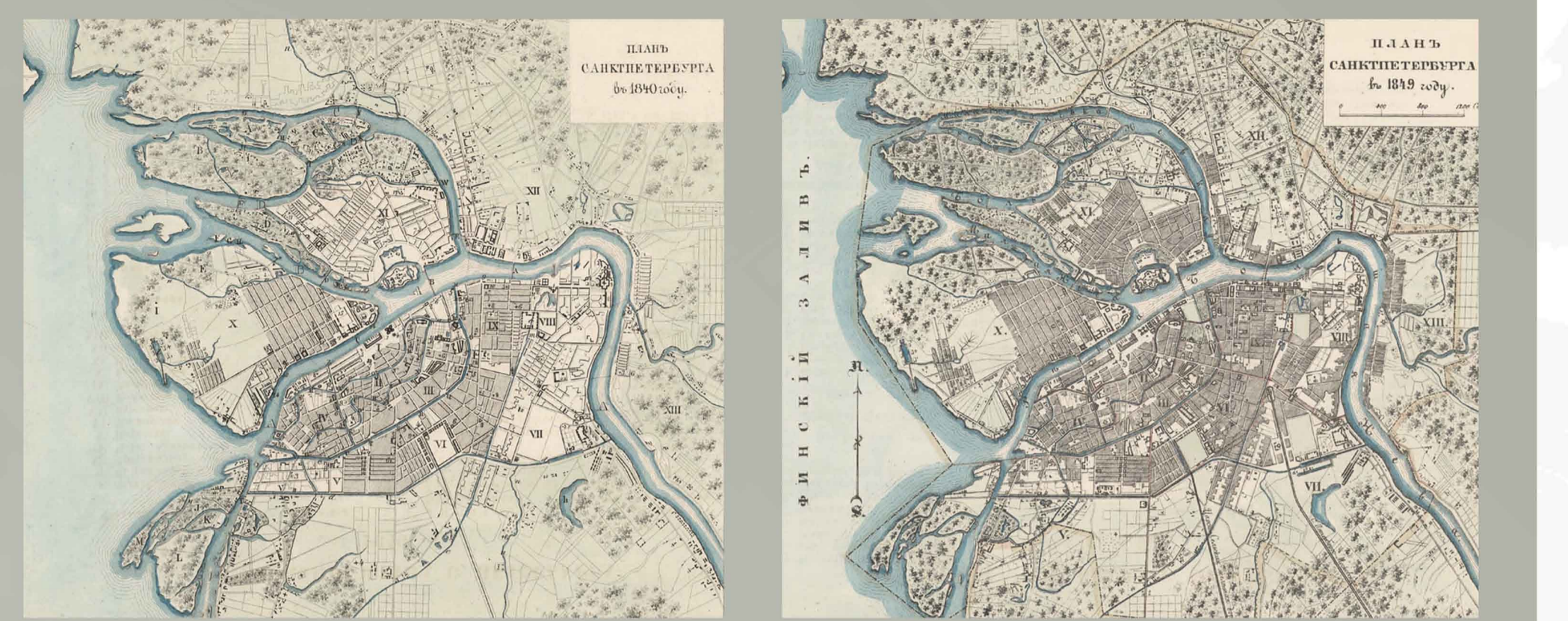


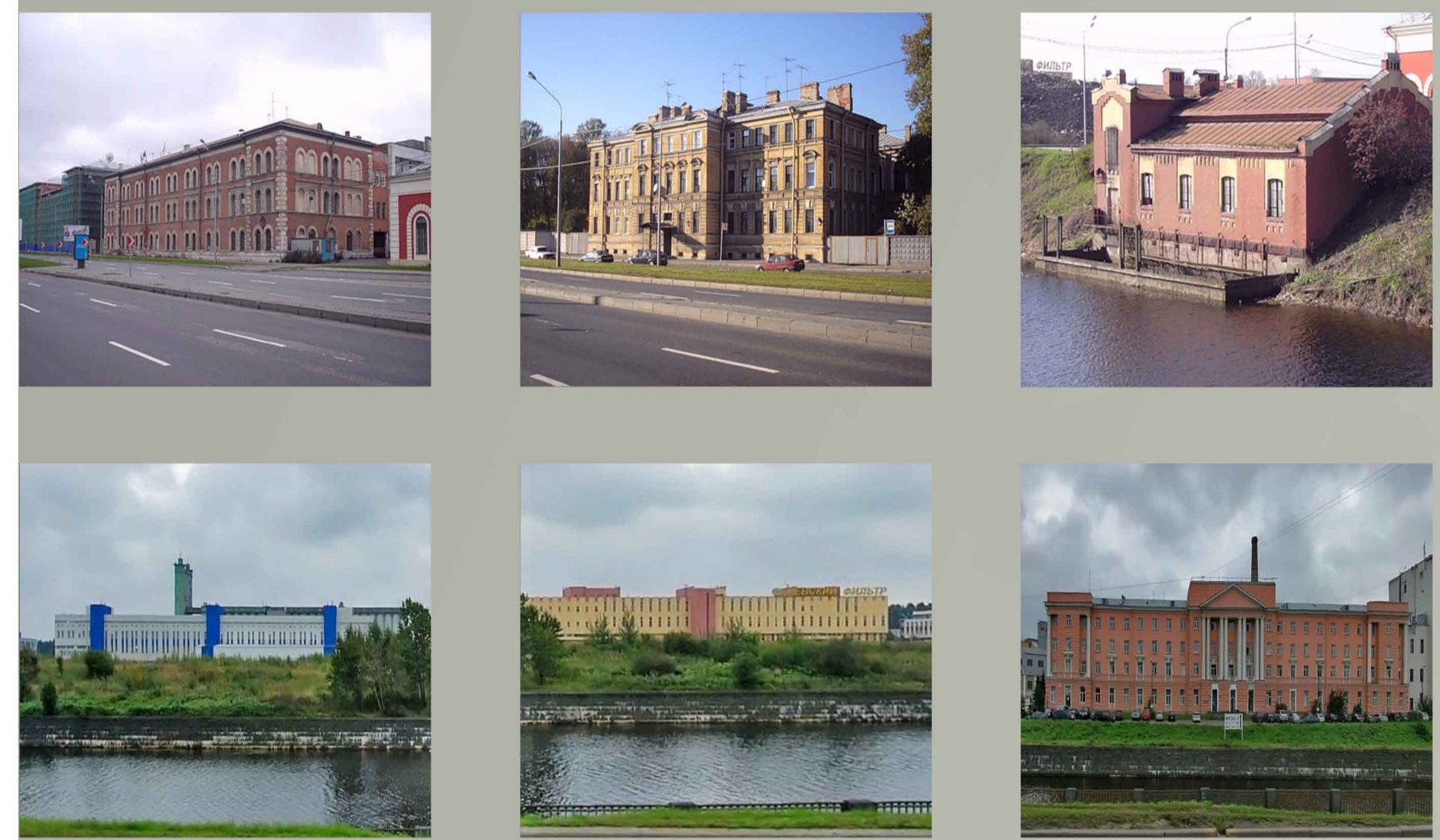
Panoramic aerial view. Вид с высоты птичьего полета.



Historical pattern... 1840 История создания... 1840....



Building typology. Типология зданий.



Street typology. Типология улиц.



1840 St. Petersburg is growing to the South. The new artificial Channel as the visual boundary to divide the Civic City and the Industrial part.

1849 Appearance of the two main Railway stations: Moskovsky and Varshavsky. The first time that the official boundary of the City can be seen on the map.



Seasonal changes: summer-winter. Смена сезонов: лето- зима.



Looking in the past... Взгляд в прошлое....



Looking in the future... Взгляд в будущее....

