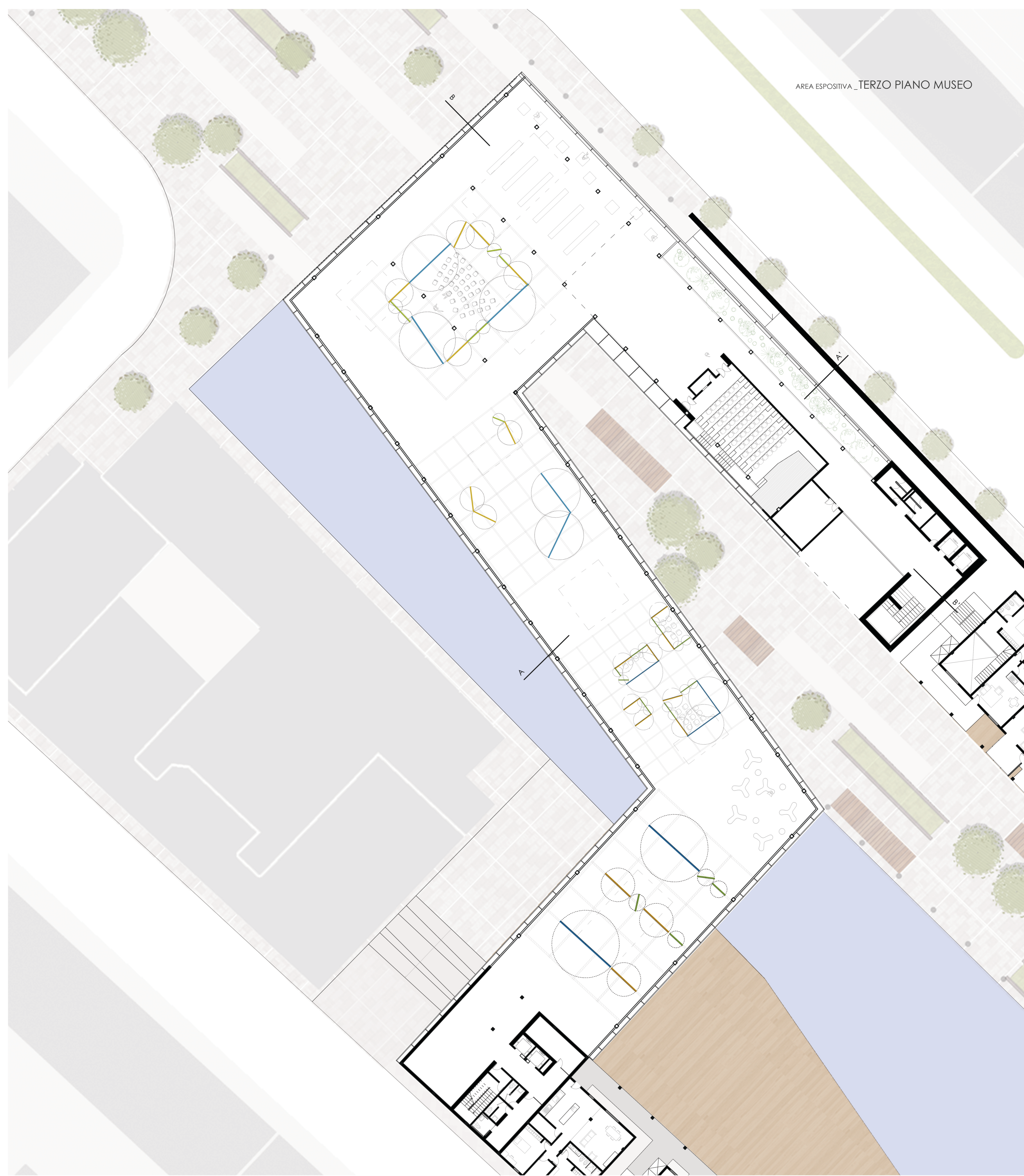
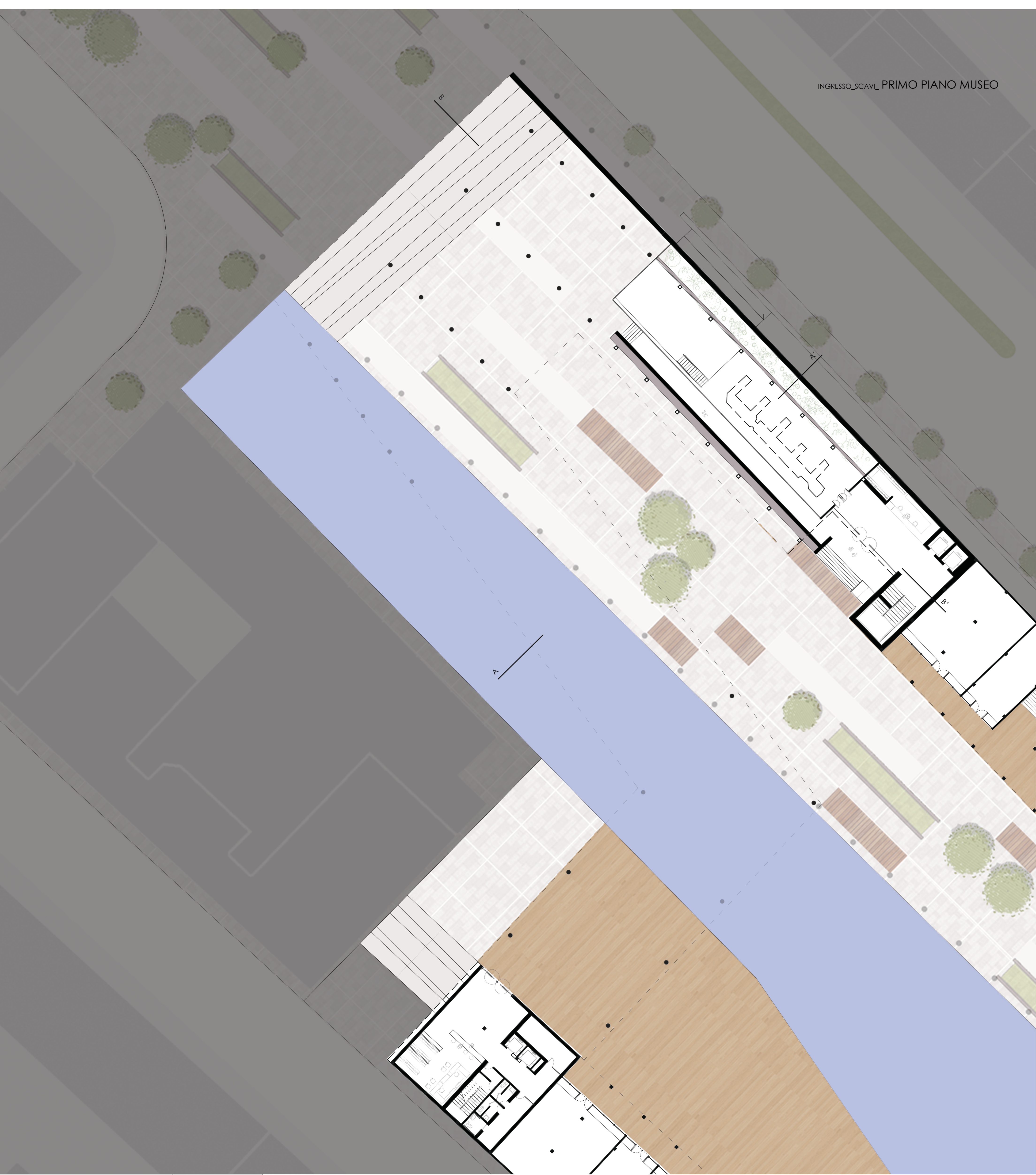


INGRESSO_SCAVL_PRIMO PIANO MUSEO

AREA ESPOSITIVA_TERZO PIANO MUSEO



Anno Accademico 2011-2012

ISOLATO DARSENA _ città d'acqua



SVILUPPO MUSEO



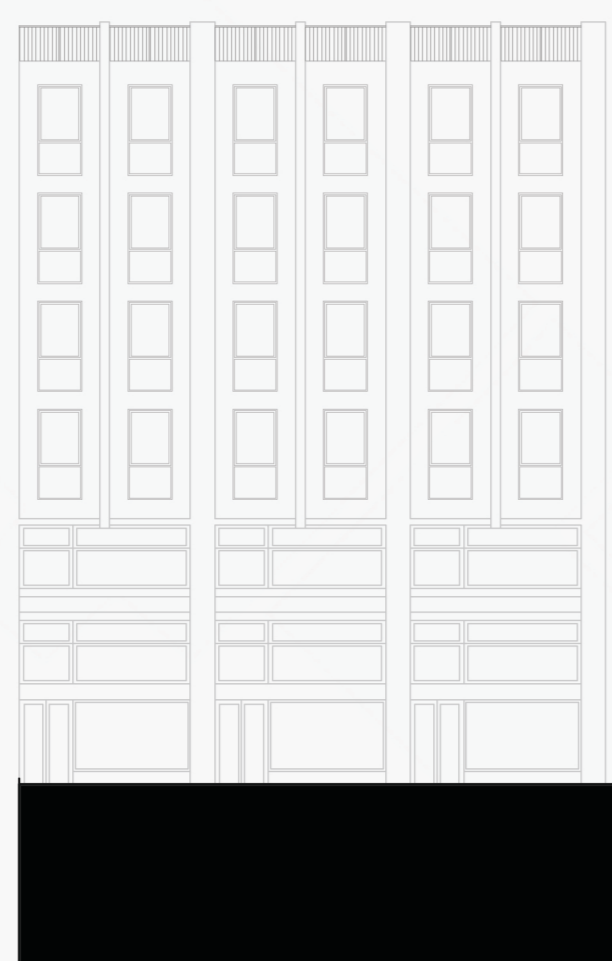
Tesi di Laurea di:
Anabella C. Vivas A.
David Grón F.

Relatore:
Prof. Pier Federico Callari

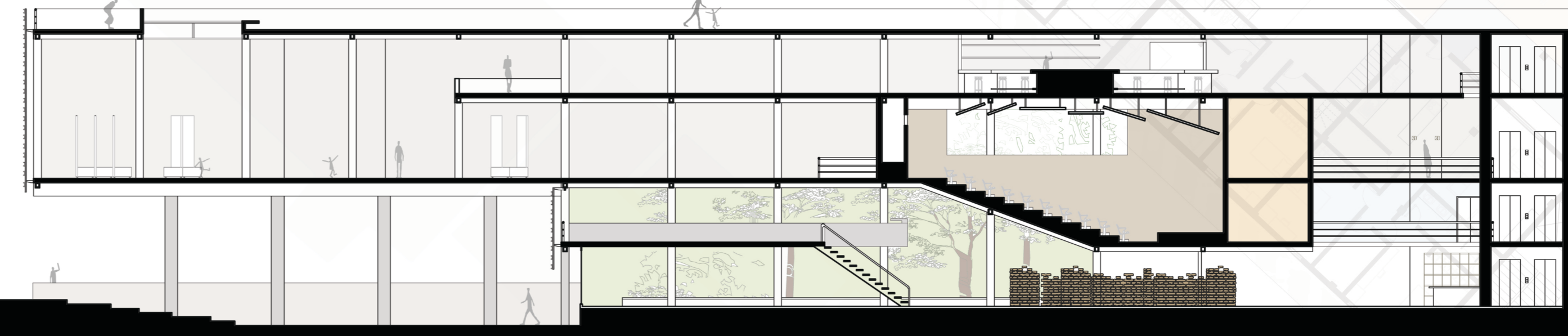
Correlatori:
Prof. Francesco Leoni
Arch. Samuele Ossola
Arch. Paolo Conforti
Arch. Sara Ghirardini
Arch. Alessia Chiapperrino

Scala:
1:200

Tavola n°:
8



Sezione Trasversale



Sezione Longitudinale