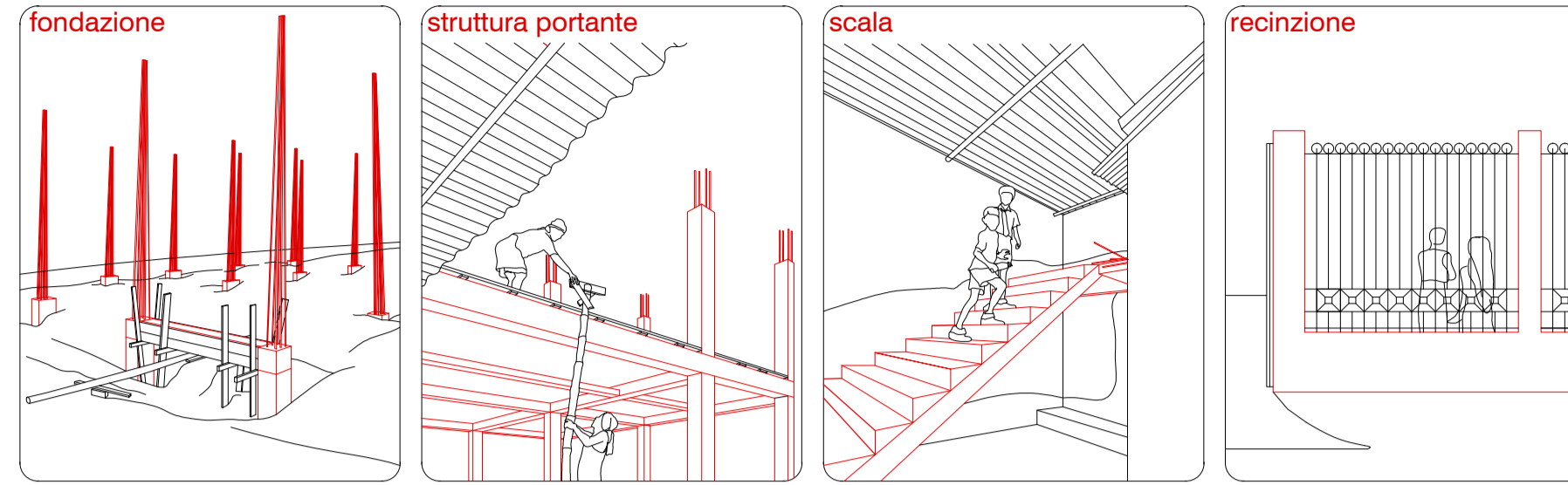
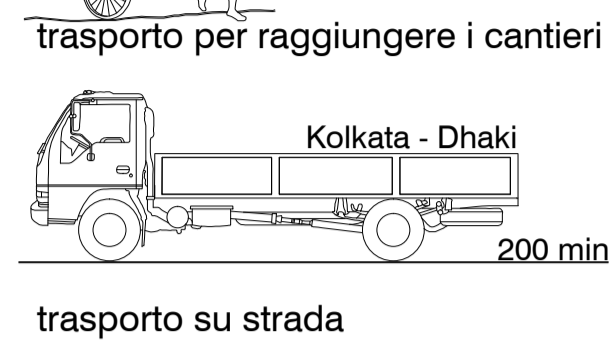
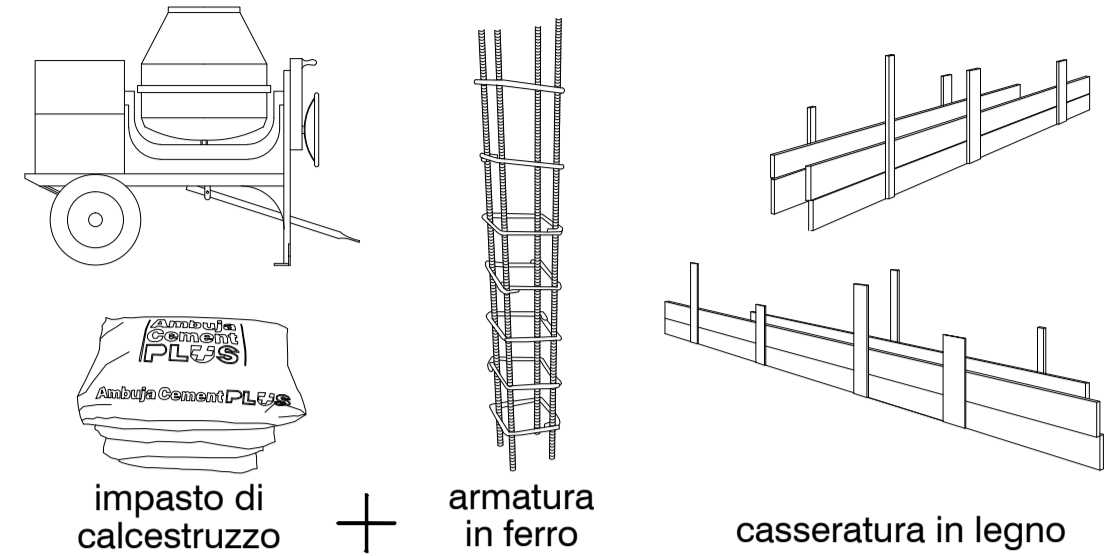
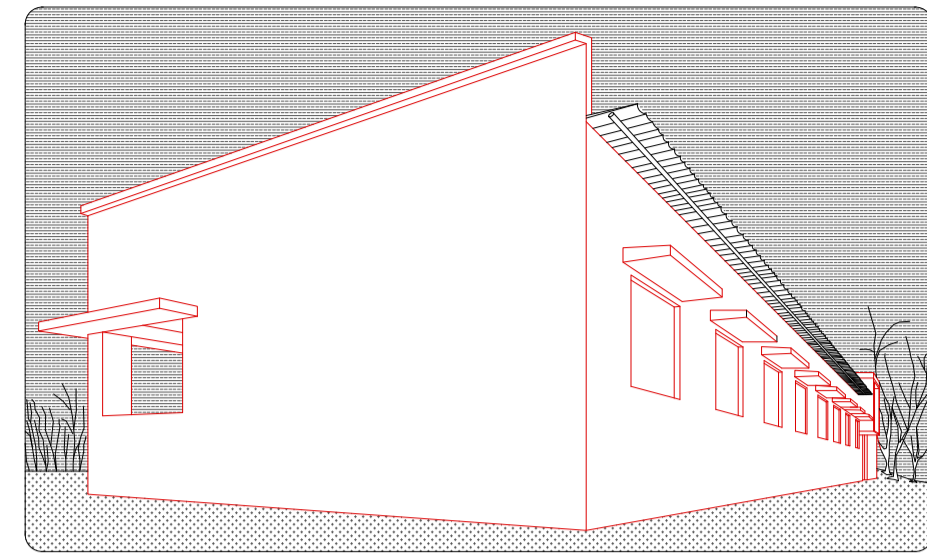


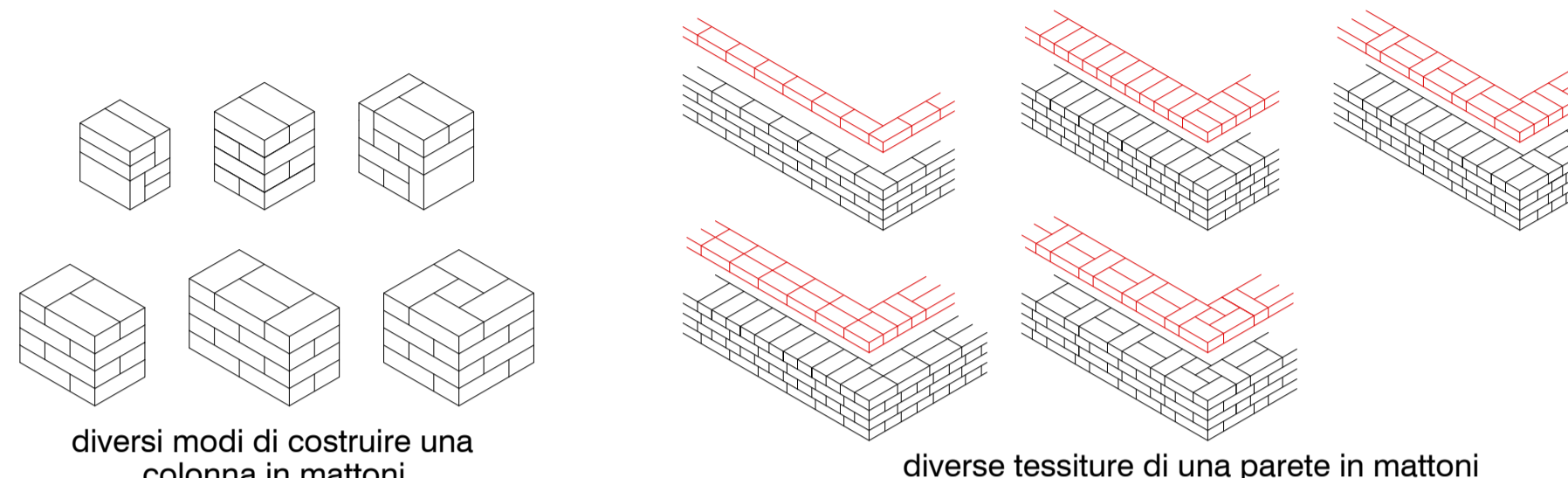
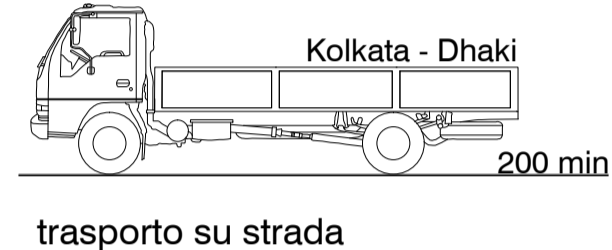
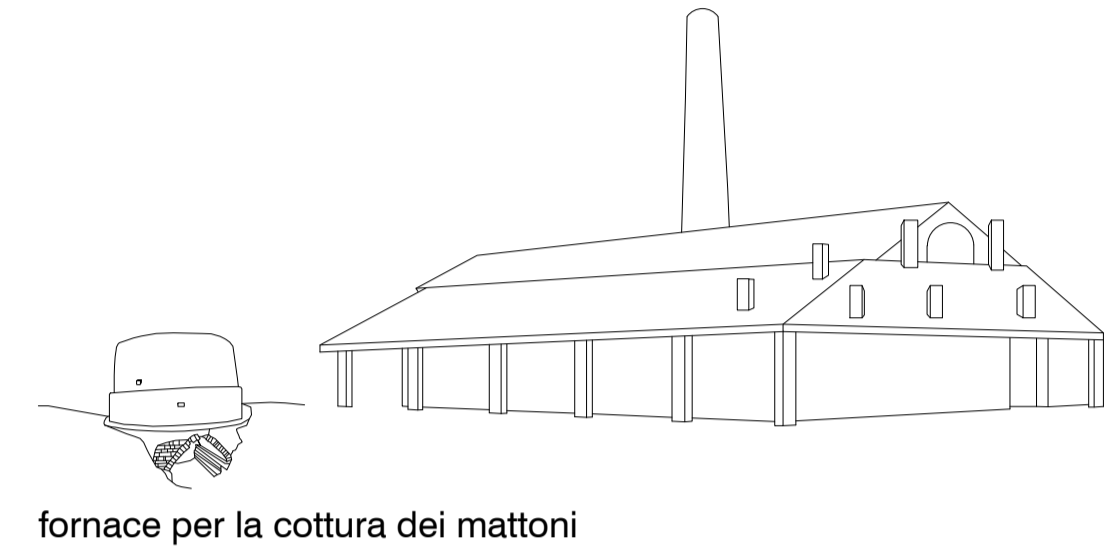
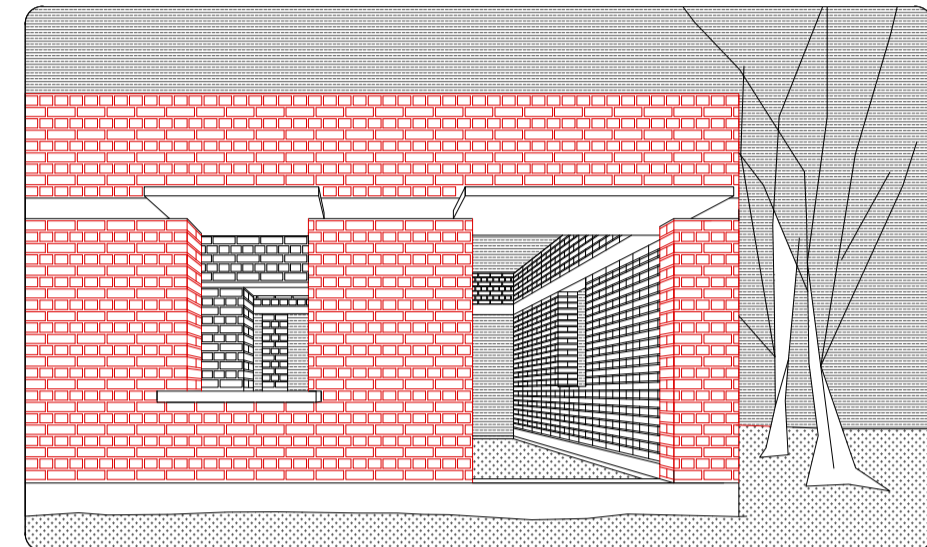


MATERIALI UTILIZZATI PER LA COSTRUZIONE NUOVI EDIFICI DA IIMC

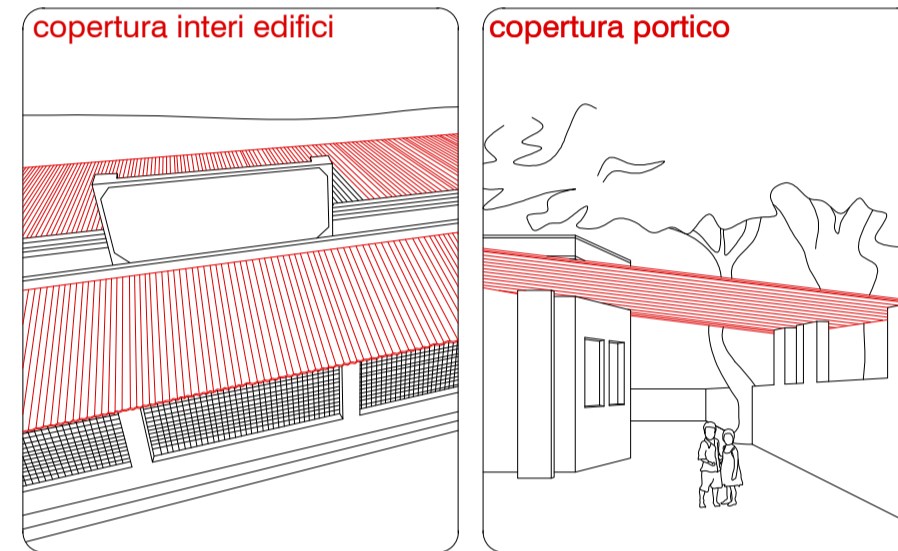
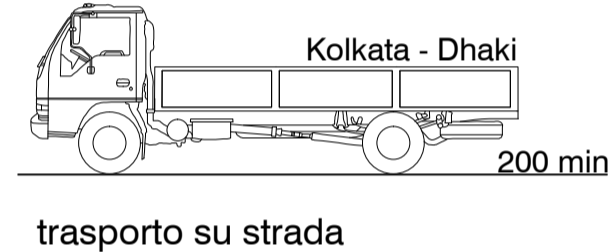
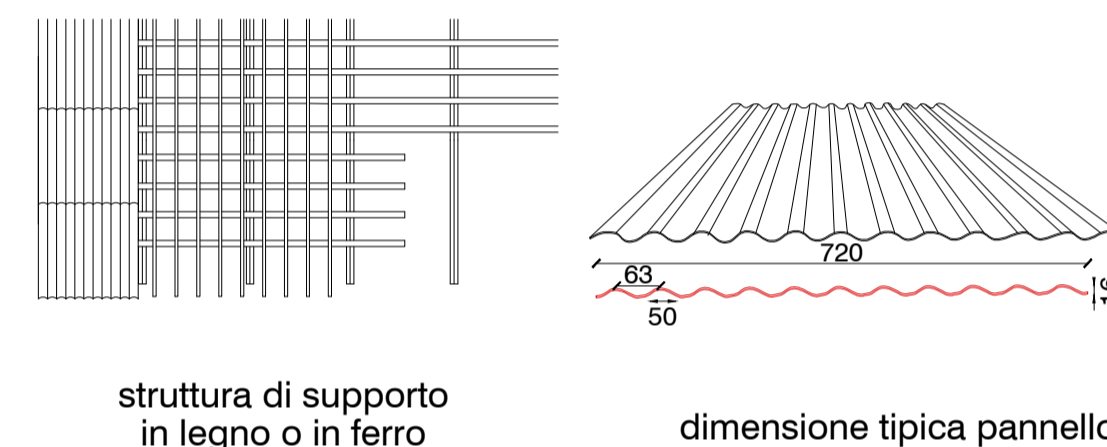
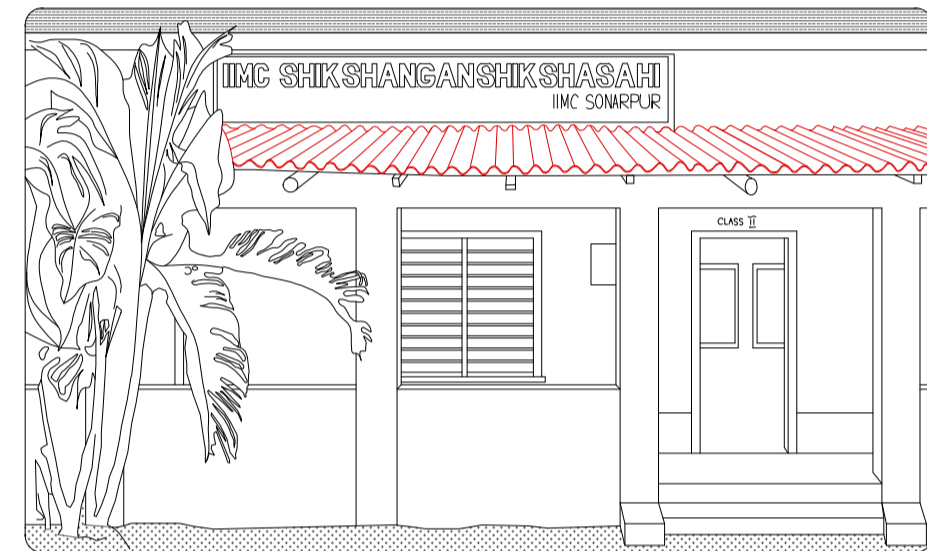
CLS ARMATO



LATERIZIO

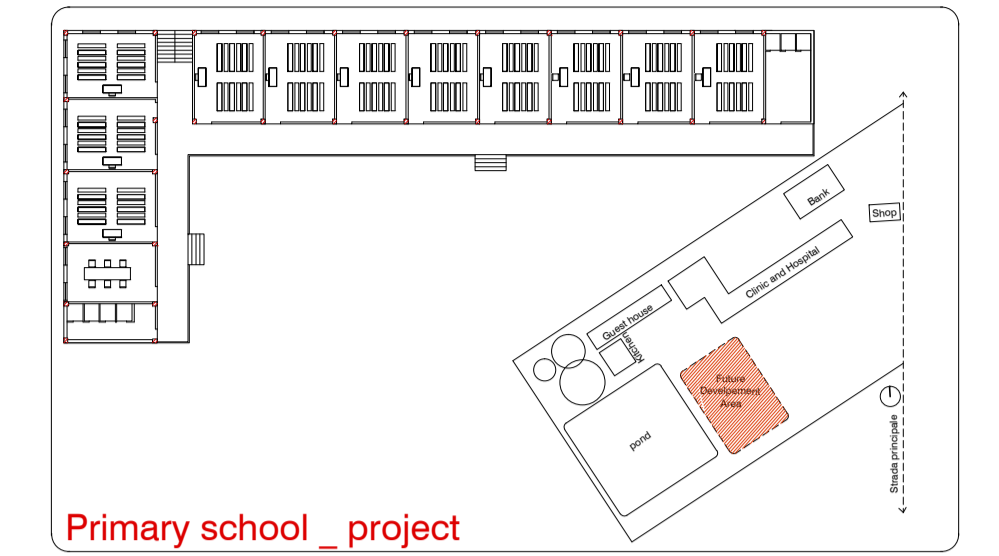


PANNELLI IN FIBROCEMENTO O LAMIERA ONDULATA

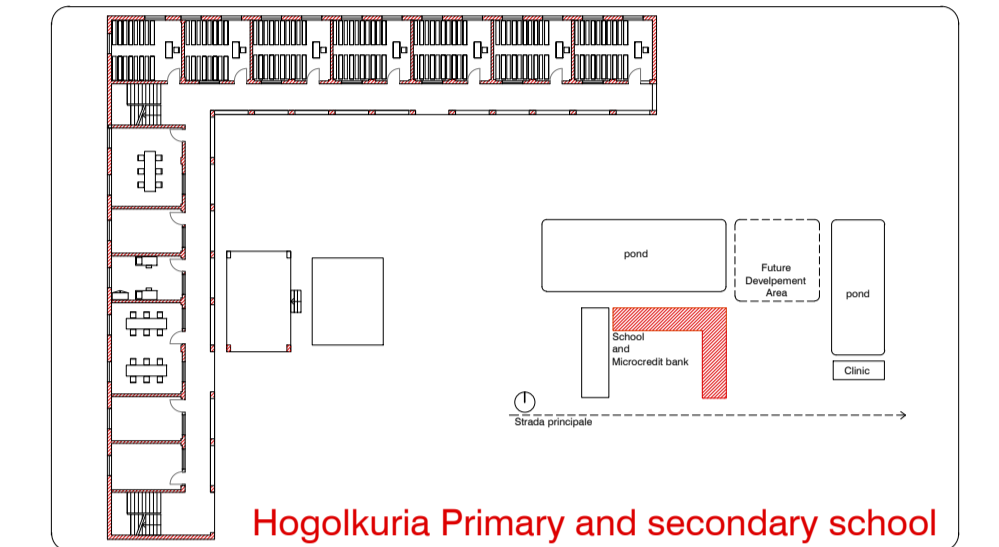


STRUTTURE IIMC

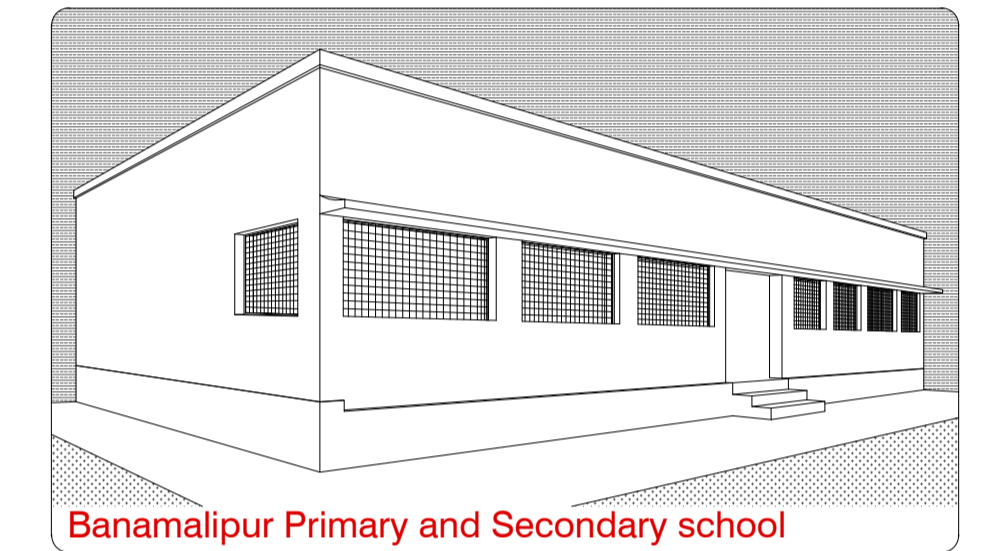
PROGETTO PREVISTO PER L'AREA DI DHAKI



ESEMPIO DI EDIFICIO COSTRUITO CON IMPIANTO A CORTE

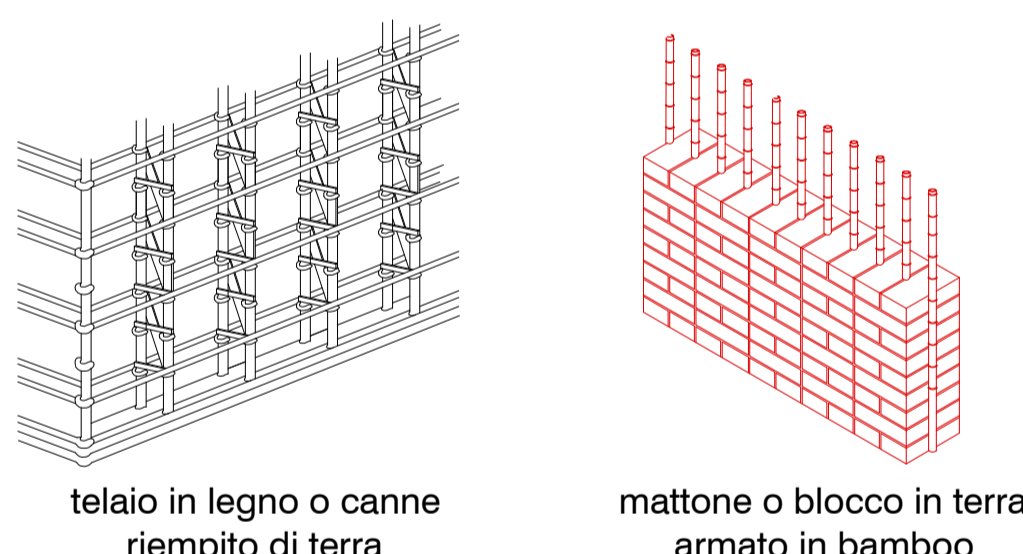
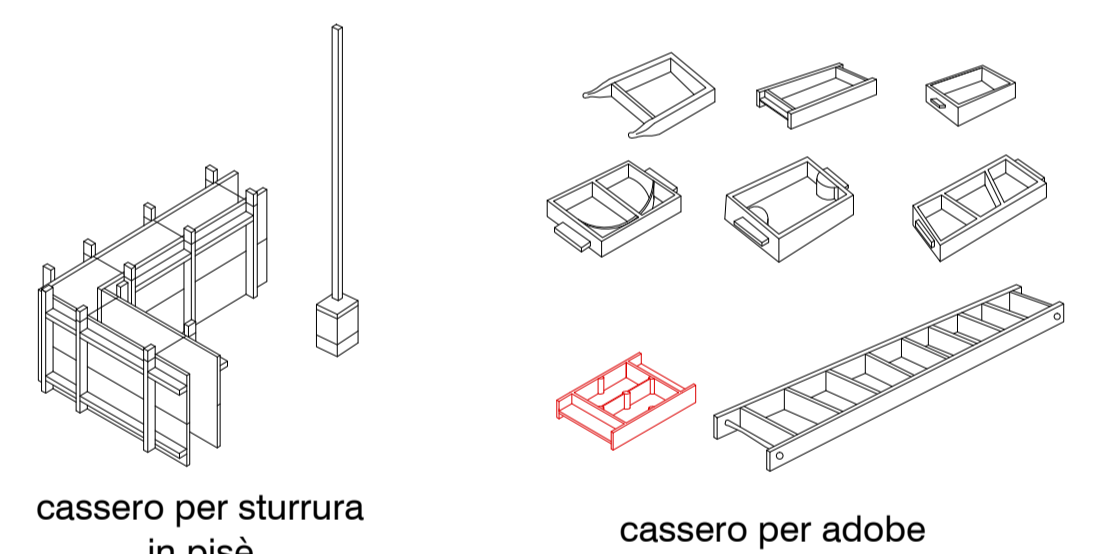
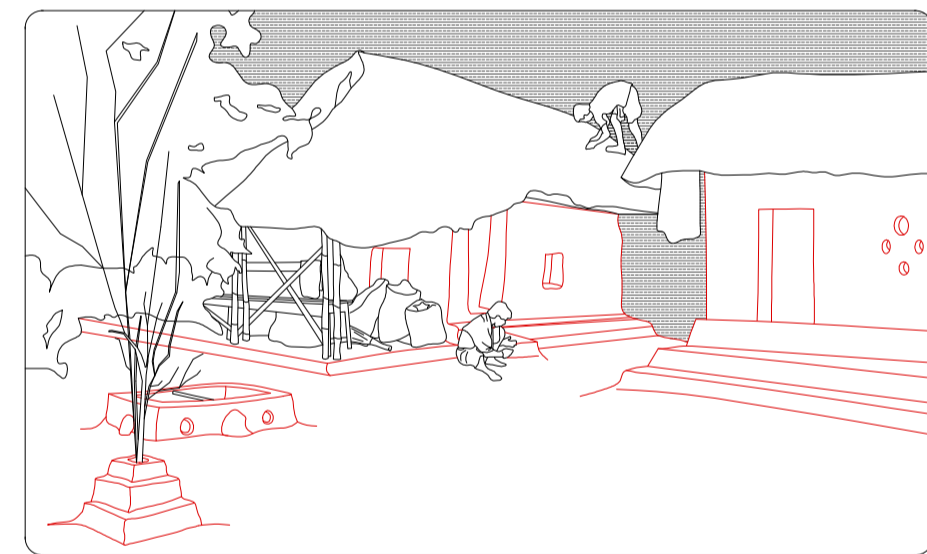


ESEMPIO DI EDIFICIO COSTRUITO CON IMPIANTO A STECCA

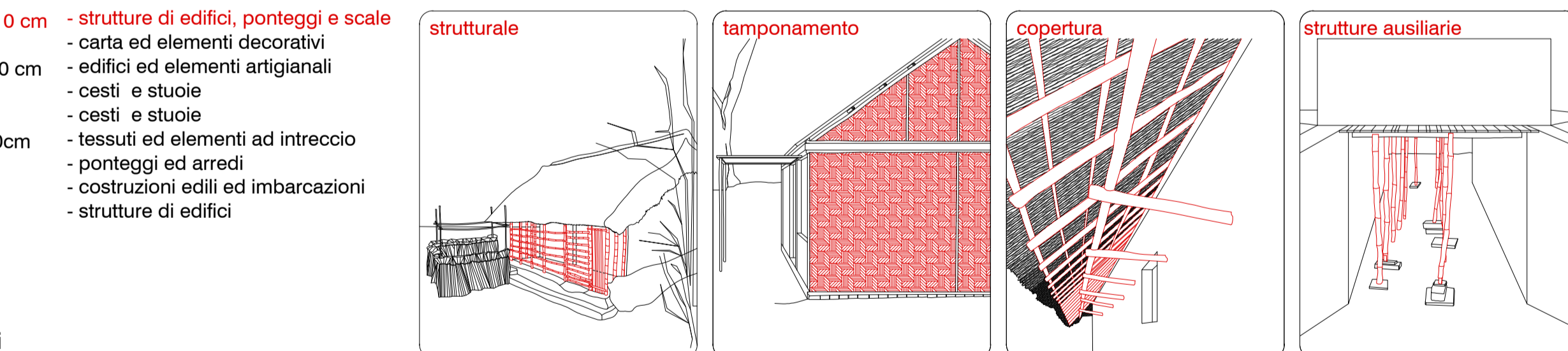
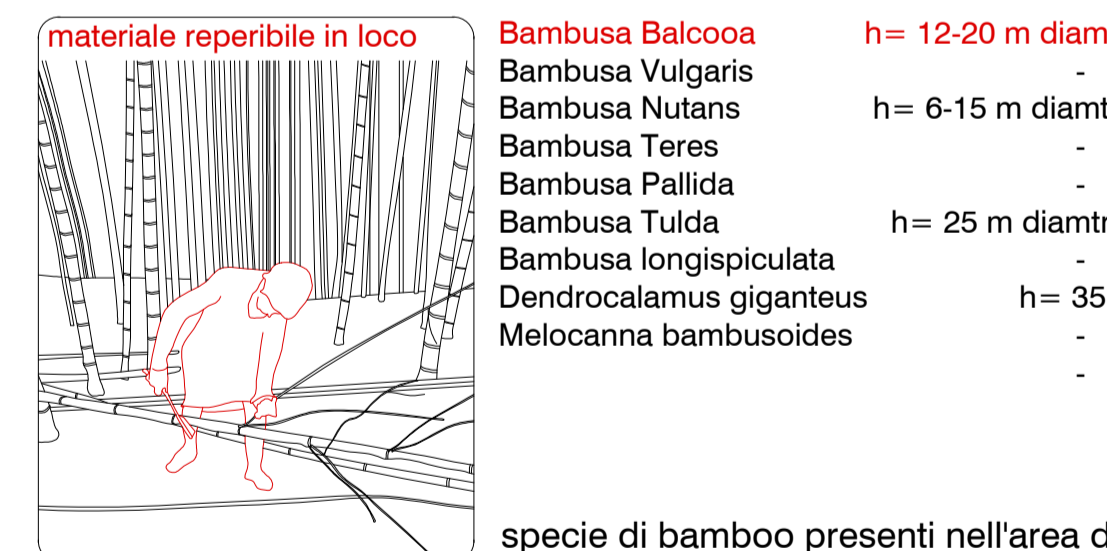
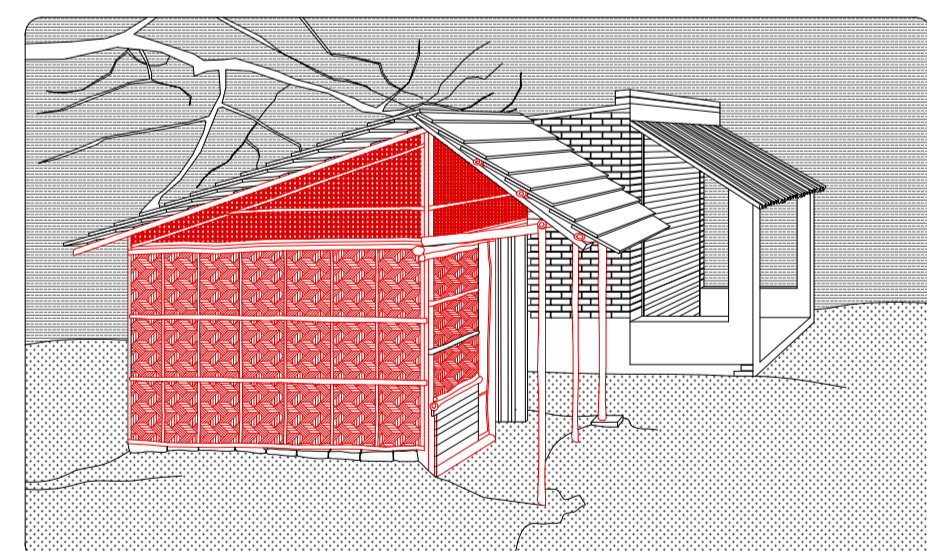


MATERIALI UTILIZZATI NEI VILLAGGI DOVE IIMC OPERA

TERRA CRUDA

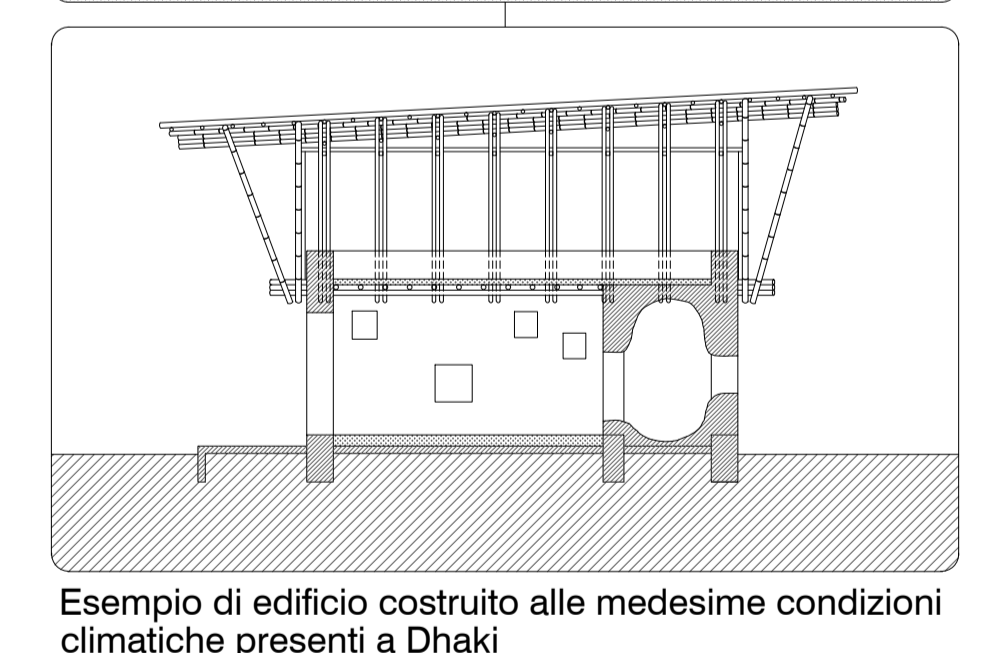
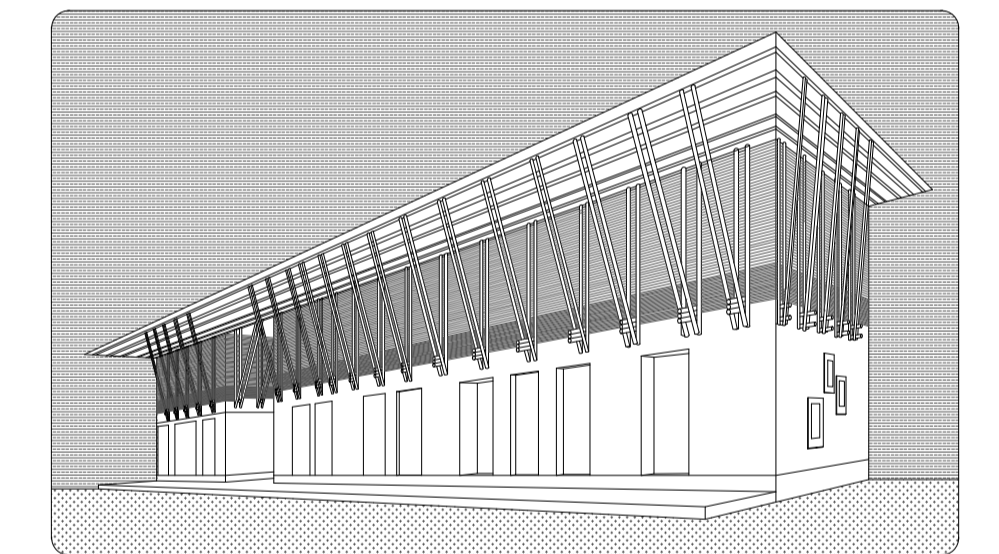


BAMBOO



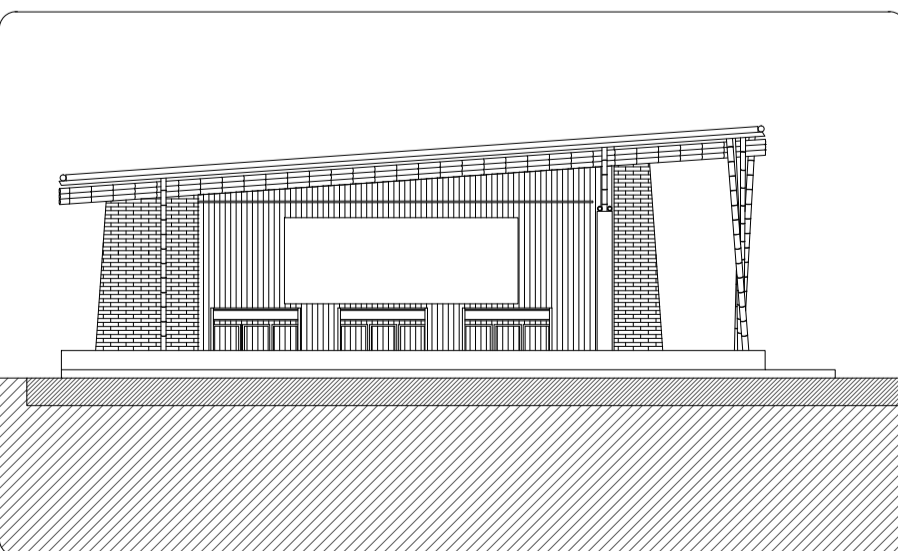
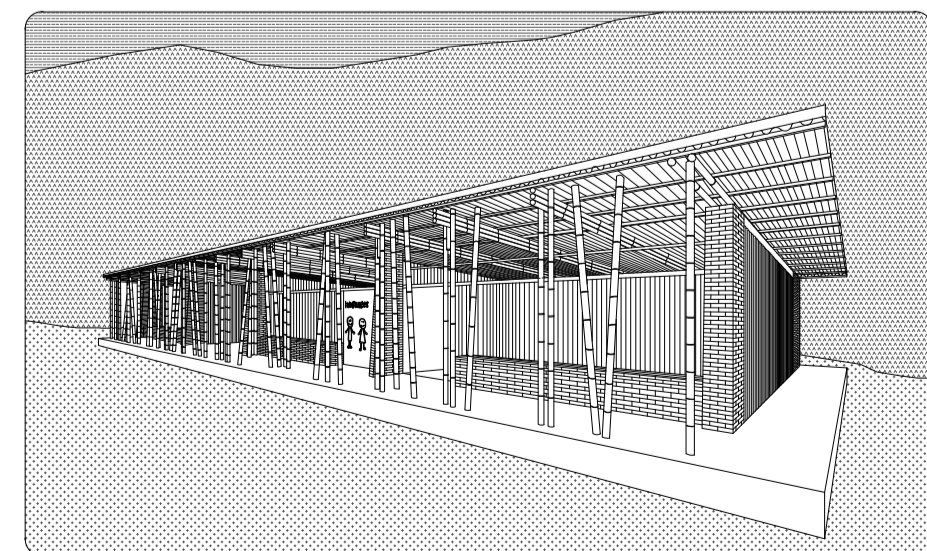
SCUOLA IN TERRA CRUDA E BAMBOO

HANDMADE SCHOOL OF A. Heringer & E. Roswag, Bangladesh



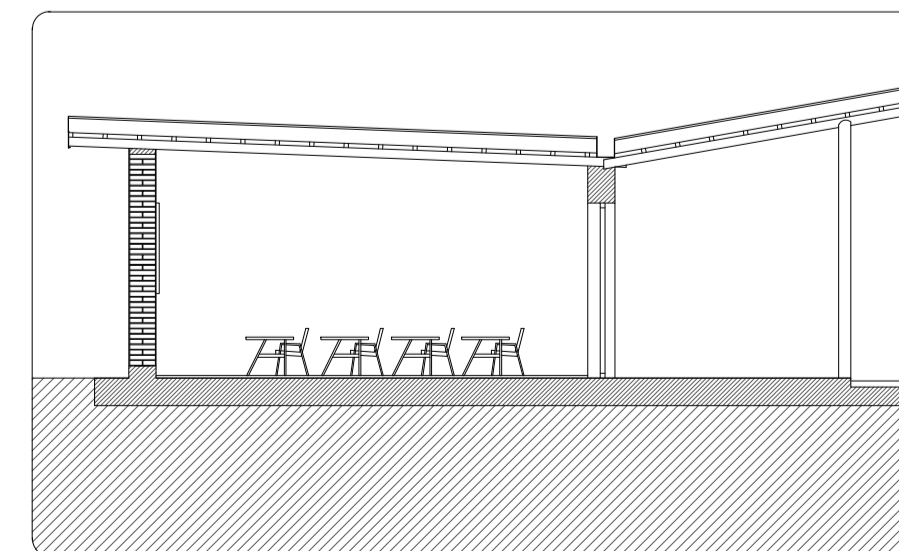
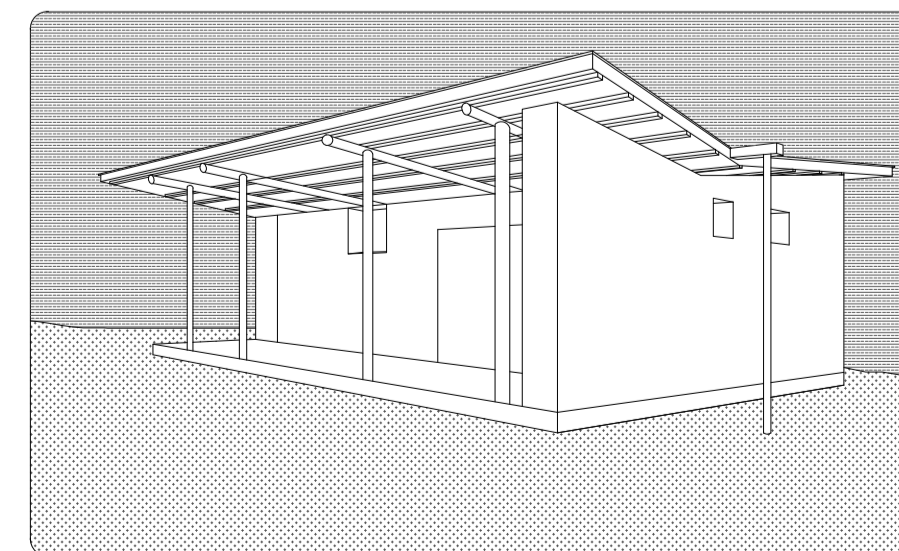
ALTRI RIFERIMENTI PROGETTUALI

TEKSING BAMBOOWOOD SCHOOL SCHOOL, Nepal



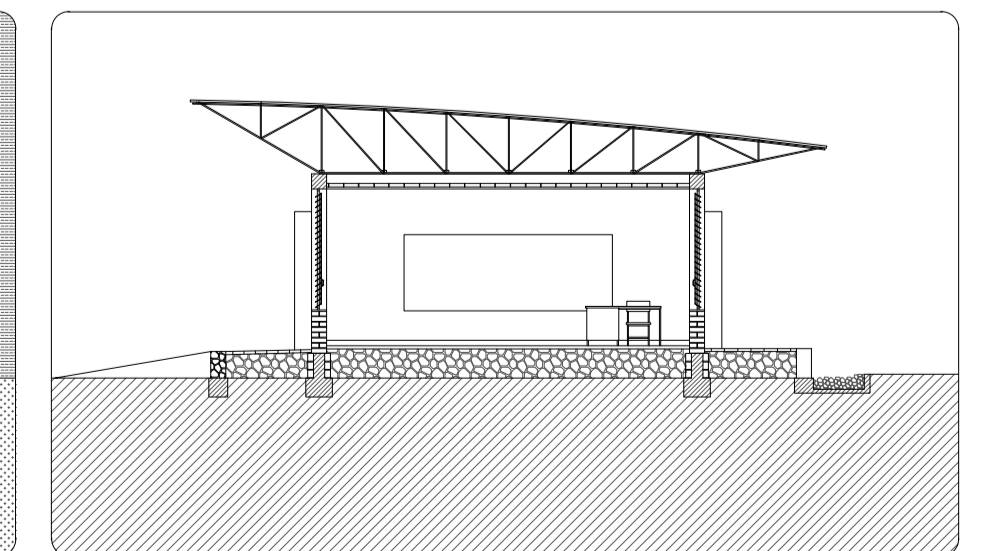
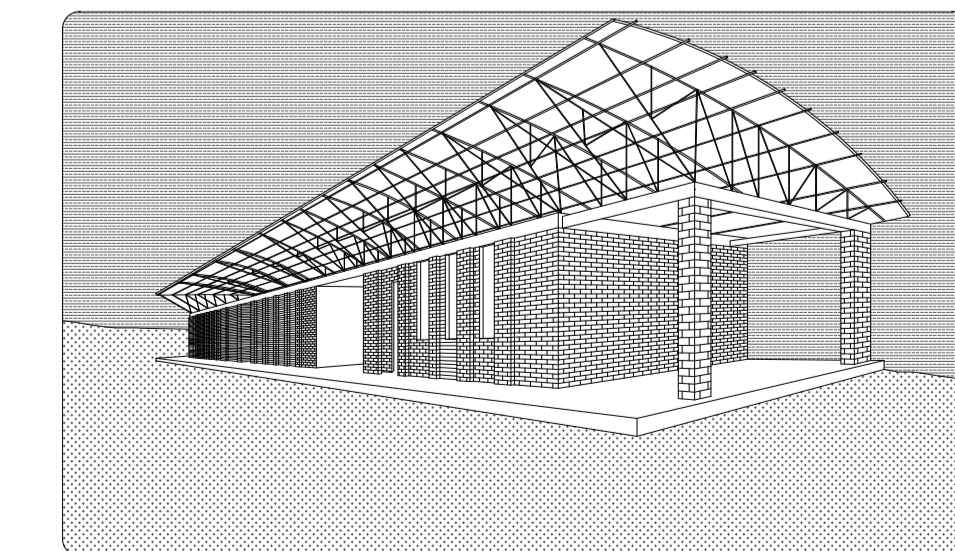
Esempio di edificio scolastico con impianto a stecca. la distribuzione delle aule e il loro ombreggiamento sono affidati ad un patio antistante in bamboo. I moduli delle aule sono in mattoni coperti da una struttura anche essa in baboo e lamiera ondulata.

MEDWED CLINIC AND SCHOOL di Michal Vital and Yuval Amir, Israel



Esempio di modulo scolastico con impianto di raccolta e riuso delle acque meteoriche. L'acqua raccolta, grazie alla particolare forma della copertura viene convogliata in serbatoi interrati per poi poter essere riutilizzata.

GANDO PRIMARY SCHOOL di Diebedo Francis Kéré _ Burkina Faso



Esempio di scuola con struttura modulare in mattoni. la struttura reticolare della copertura risulta dunque più leggera e si stacca dalla parte sottostante permettendo ventilazione passante.