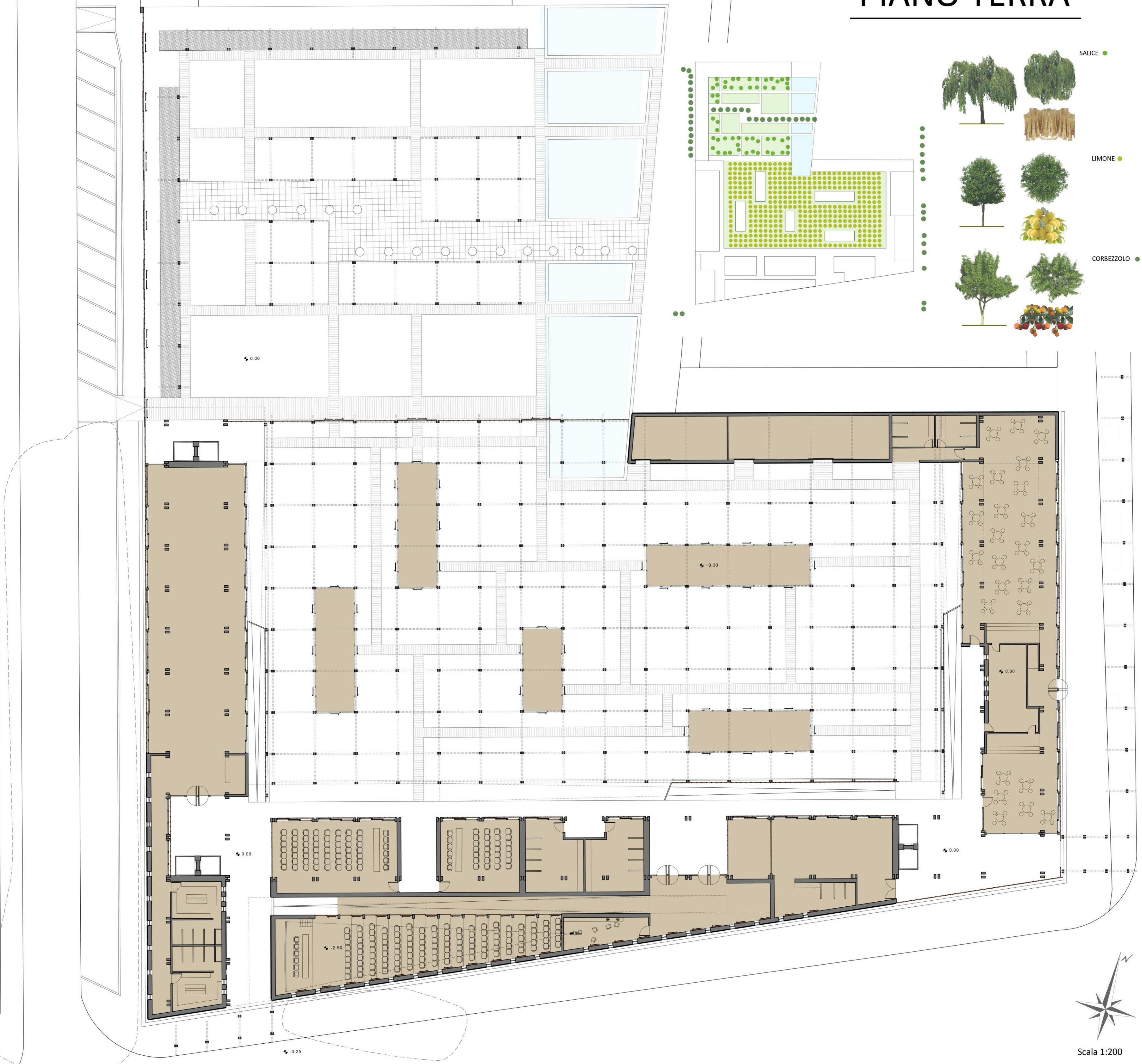


# PIANO TERRA



Scala 1:200

AREE RELAX

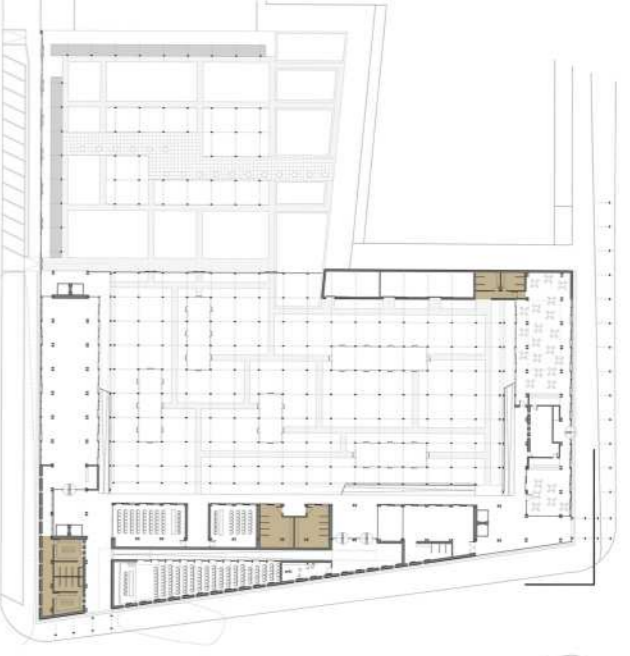
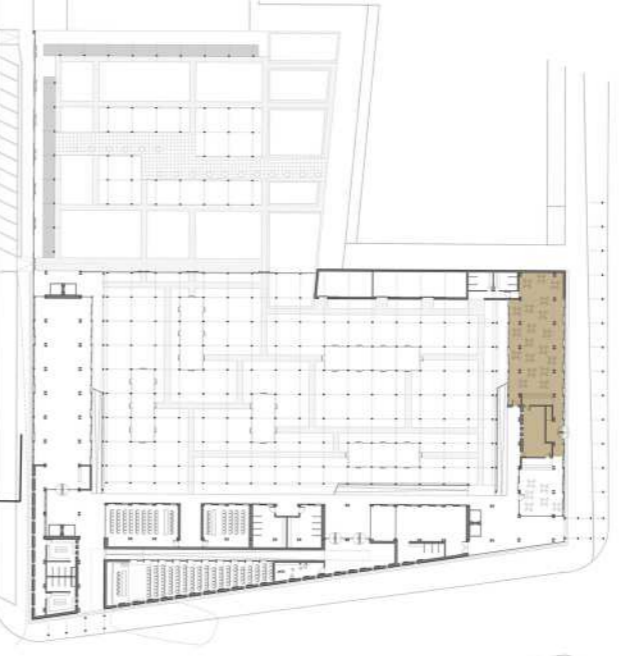
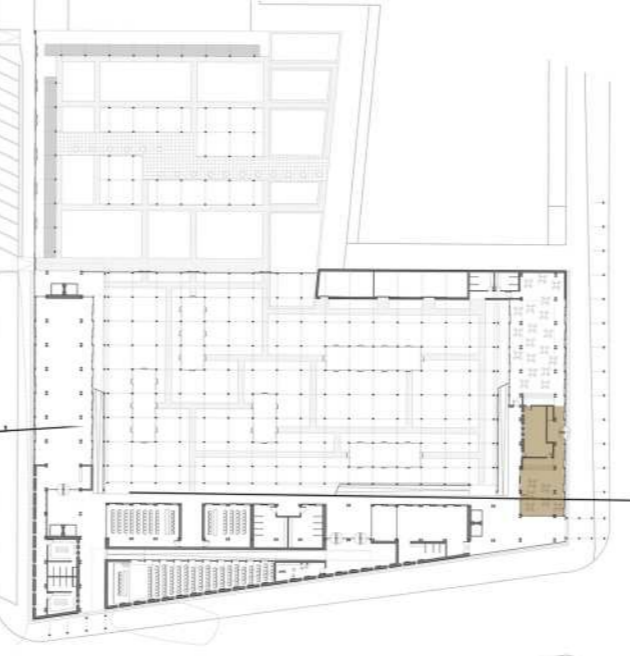
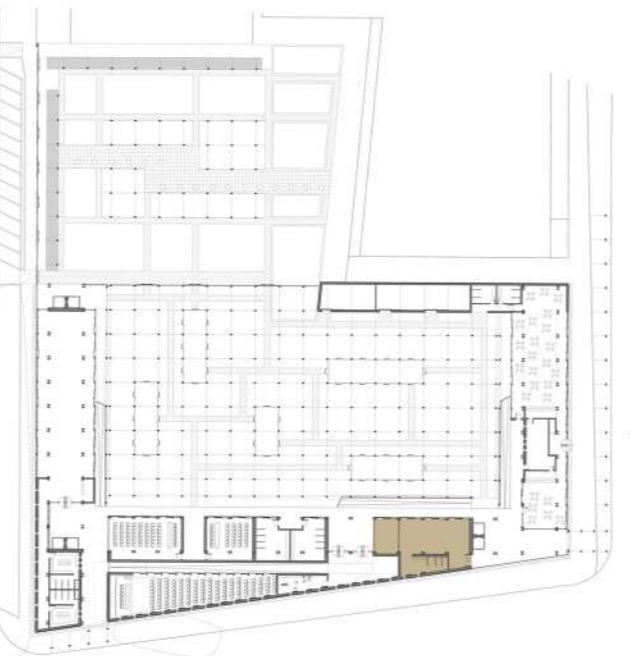
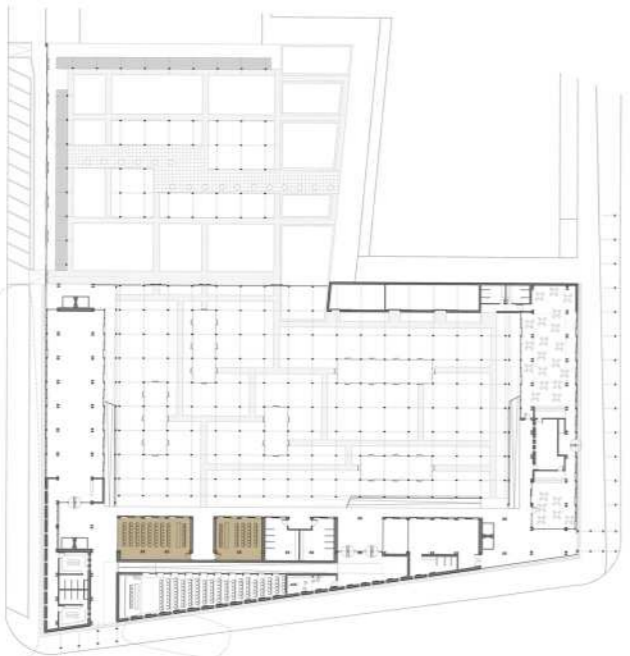
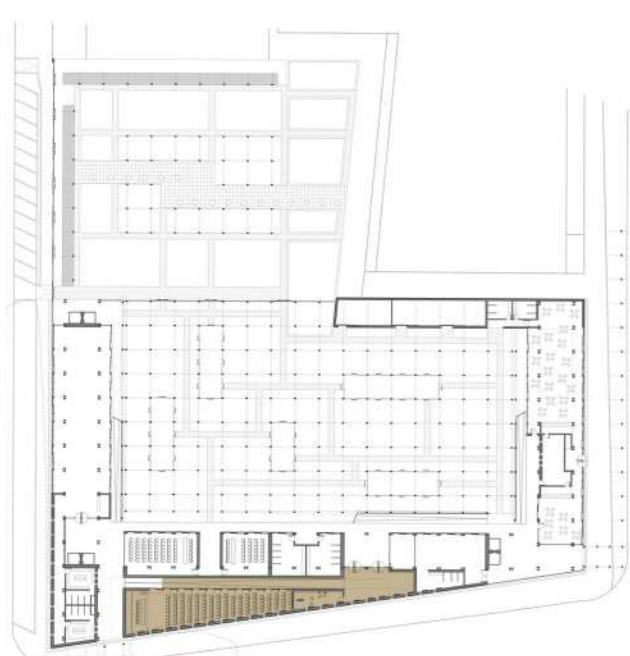
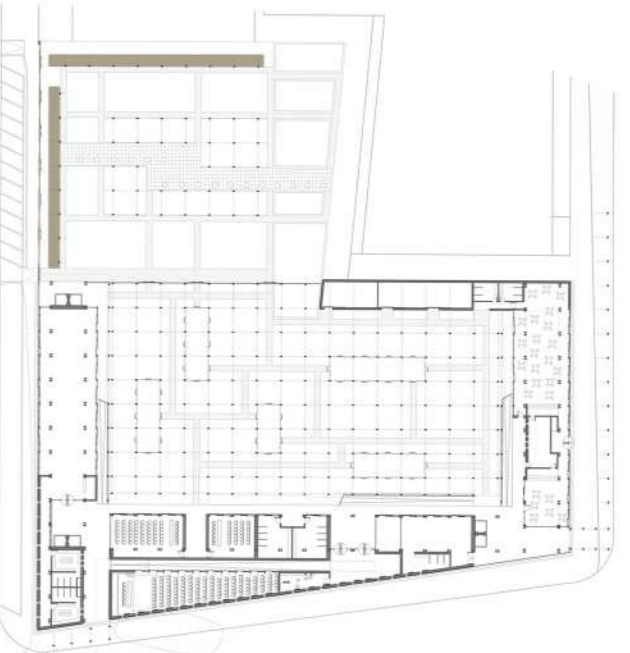
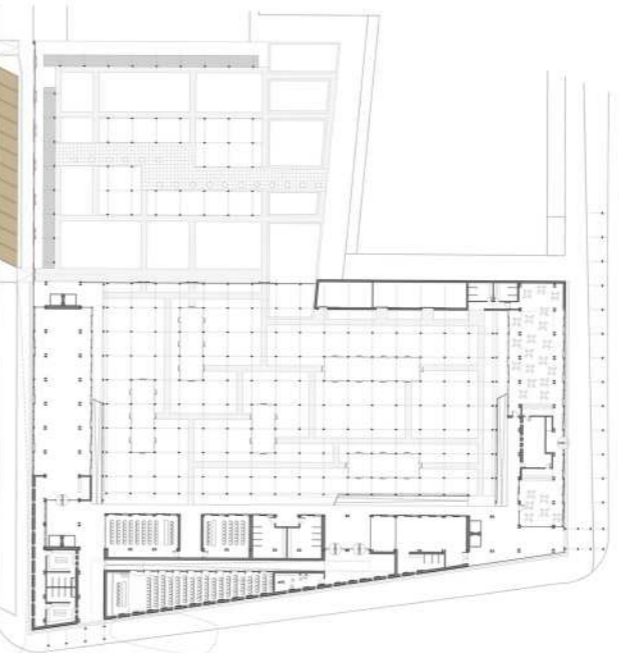
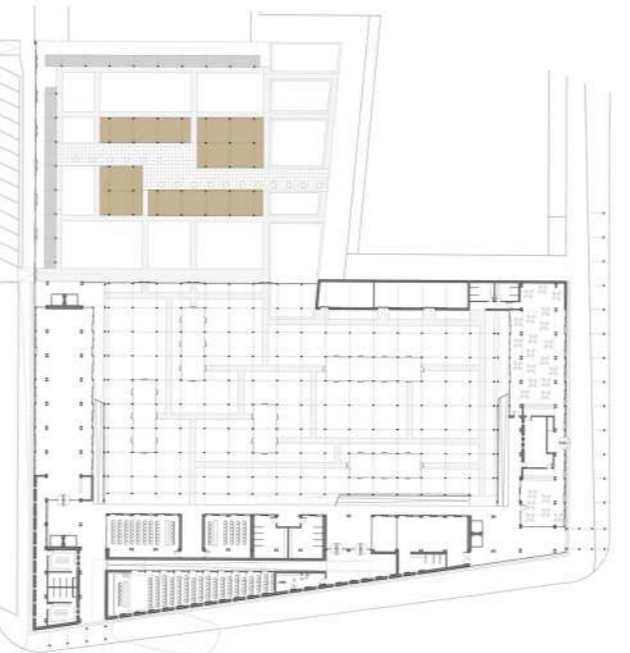
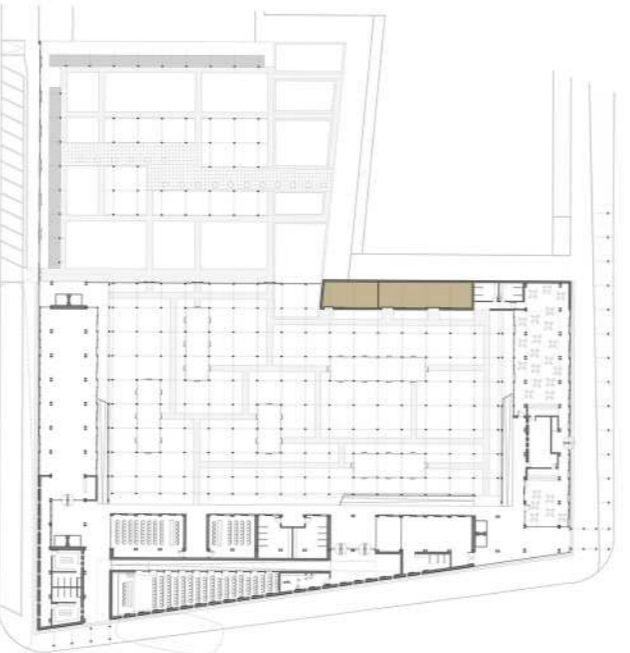
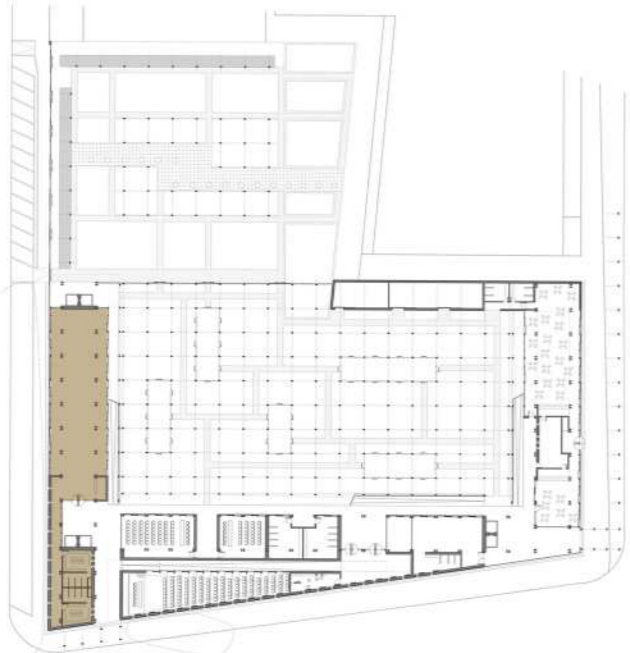
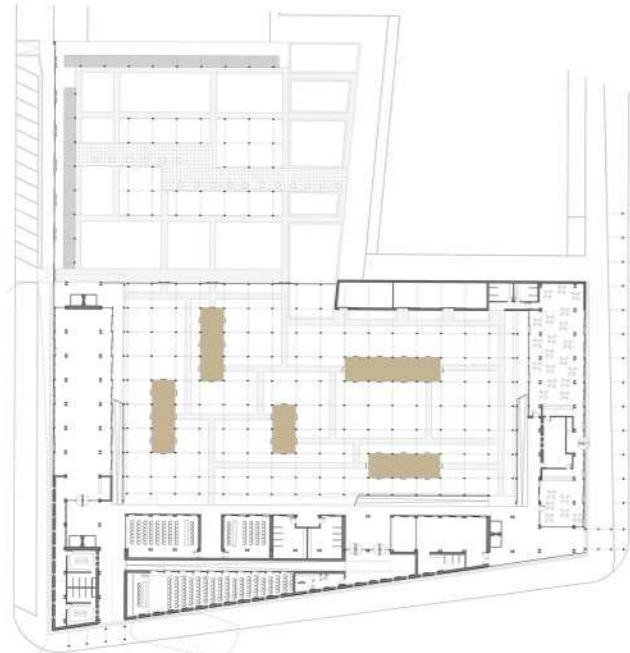
PALESTRA

MAGAZZINI / CENTRALE TERMICA

PLAYGROUND

PARCHEGGI AUTOMOBILI

PARCHEGGI BICICLETTE



AUDITORIUM

SALE RIUNIONI / CONFERENZE

NURSERY

CAFFETERIA

RISTORANTE

SERVIZI IGIENICI



Politecnico di Milano  
Scuola di Architettura e Società  
Corso di Laurea in Architettura

A.A. 2011-2012

TESI DI LAUREA MAGISTRALE IN  
PROGETTAZIONE DELL'ARCHITETTURA SOSTENIBILE:

**COWORKINGGARDEN**

RELATORE: PROF. LEONARDO BELLADELLI  
LAUREANDO: FRANCESCO CAZZANIGA  
755265

TAV. 06a  
PIANTA  
PIANO TERRA