

PROTECT TO PROTECT  
DARAKEH MOUNTAIN ROUTE



# INTRODUCTION

WHERE

IRAN > TEHRAN PROVINCE



WHERE

IRAN > TEHRAN PROVINCE > BETWEEN ALBORZ & TEHRAN



**ALBORZ MOUNTAINS**

**DARAKEH**

TEHRAN

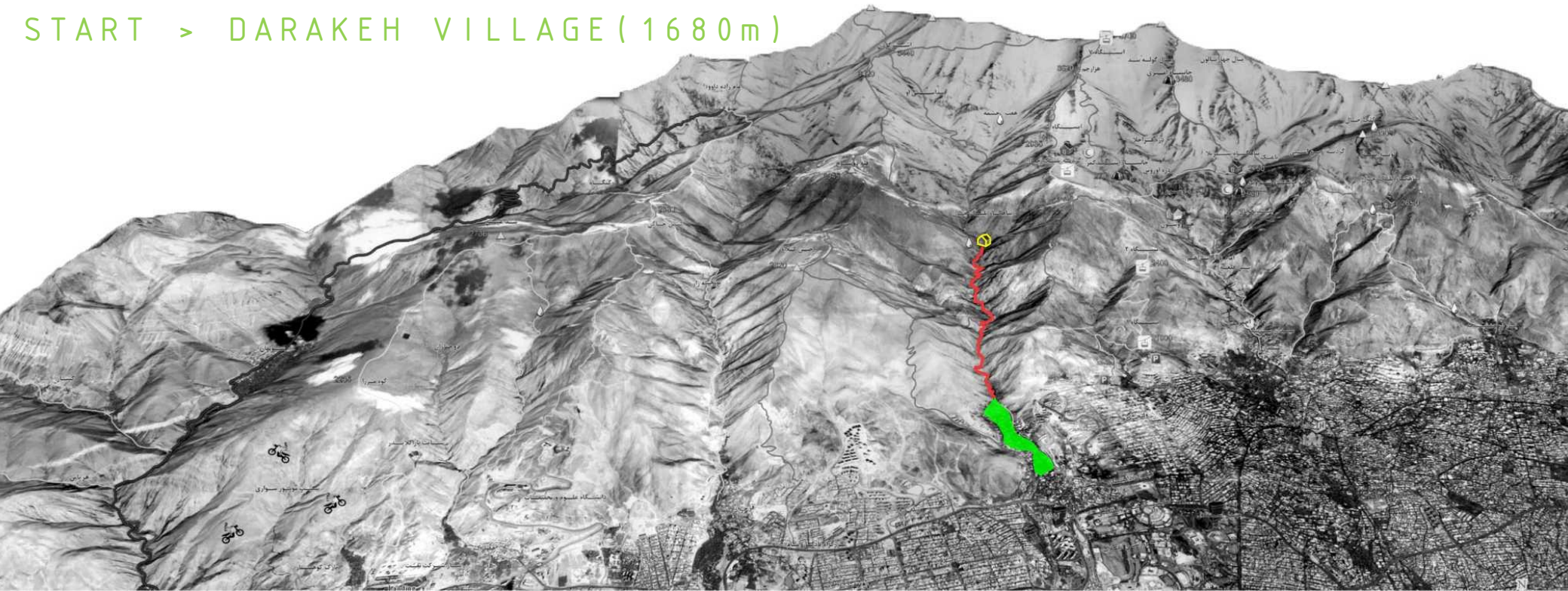
# WHERE

IRAN > TEHRAN PROVINCE > BETWEEN ALBORZ & TEHRAN

END > PALANGCHAL SHELTER (2240m)

> MOUNTAIN ROUTE >

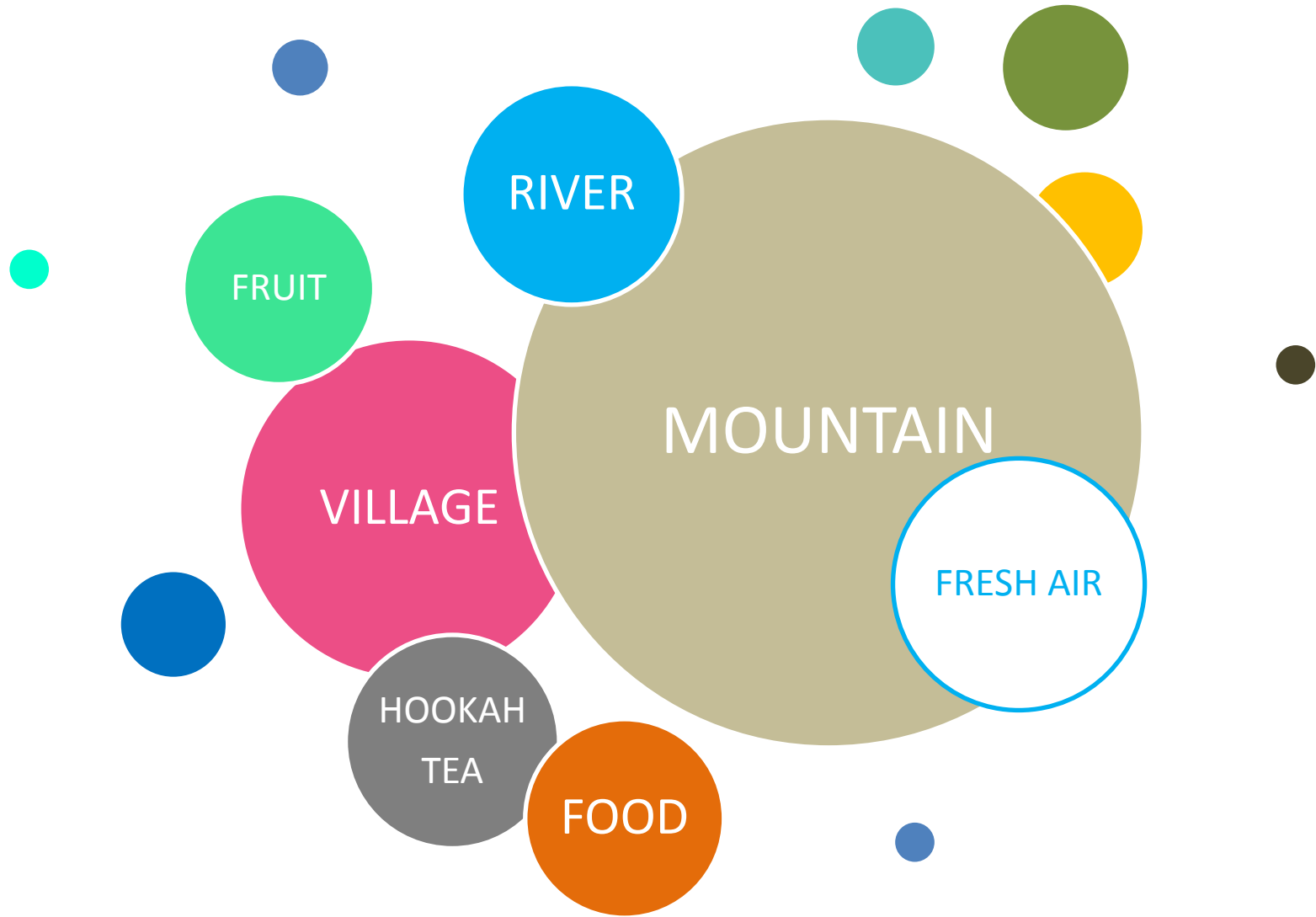
START > DARAKEH VILLAGE (1680m)



WHAT



WHAT

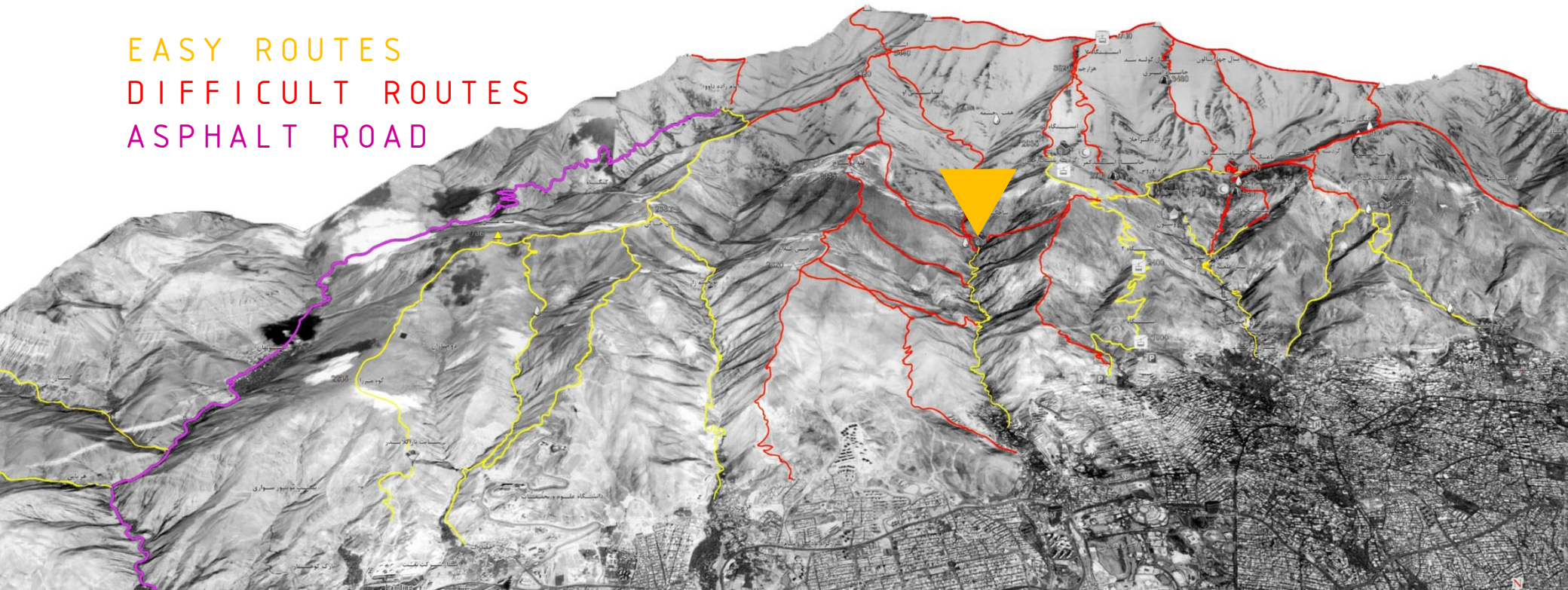


# WHAT

Tehran has 25 mountain routes  
and 1000,000 visitors each year



EASY ROUTES  
DIFFICULT ROUTES  
ASPHALT ROAD





# WHAT

Tehran has serious problem of pollutions in all types and specially air pollution. The fact that brings people to mountains for their free time.

FRESH AIR



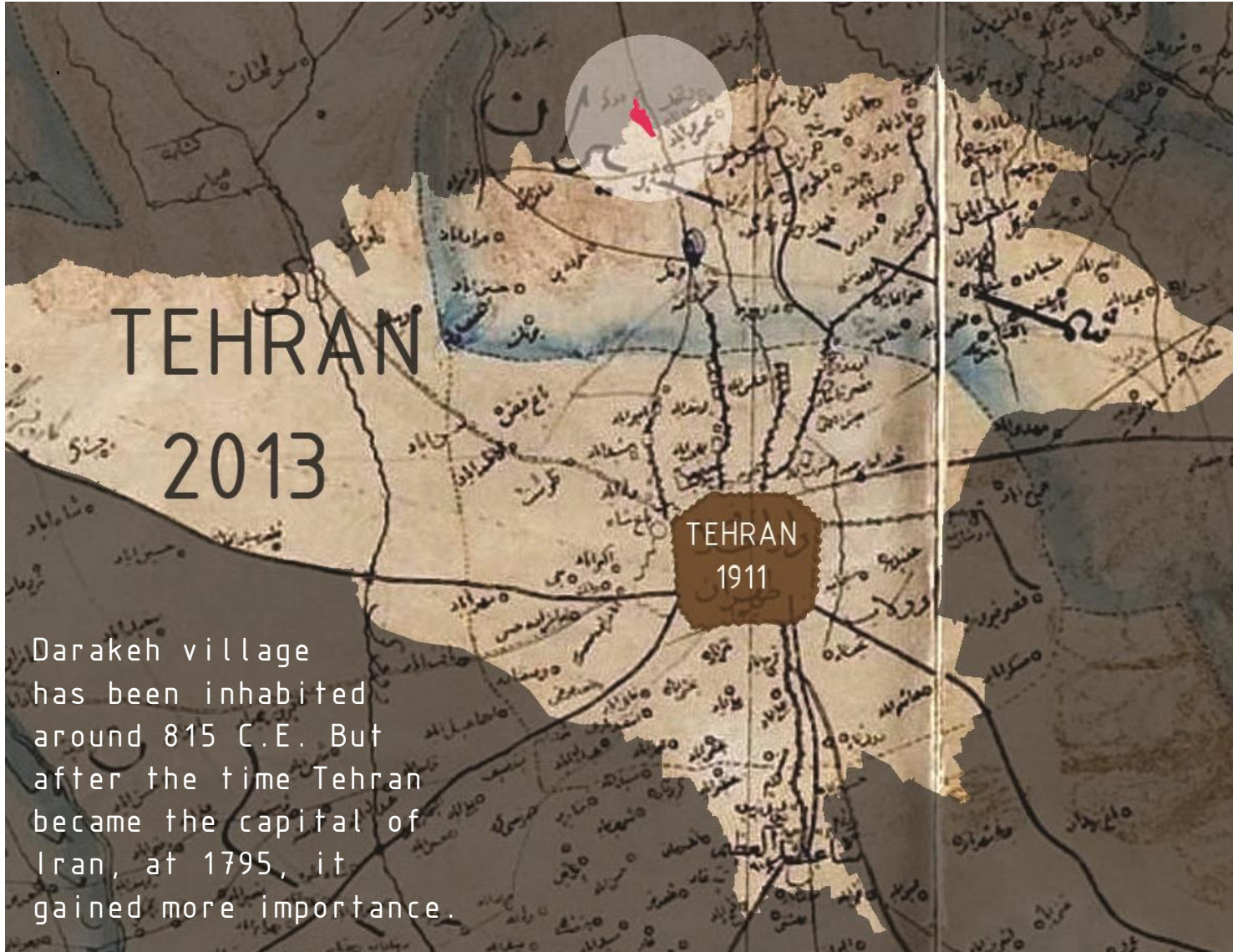
A topographic map of the Tehran region in Iran. The map shows the Alborz mountains in the north, with several rivers flowing southwards. A prominent river, the Darakeh River, is highlighted in a thick blue line. A blue circle with the word 'RIVER' inside is positioned in the upper right quadrant, with a line pointing to the Darakeh River. A white box with the word 'WHAT' is in the upper left. The map uses brown contour lines to indicate elevation and blue lines for rivers. The city of Tehran is outlined in black in the center.

WHAT

RIVER

Tehran has 9 rivers from Alborz mountains and they produce 135,000,000 mc annually.  
Darakeh river is the 3<sup>rd</sup> one and it produces 16,000,000mc water per year.

# WHAT

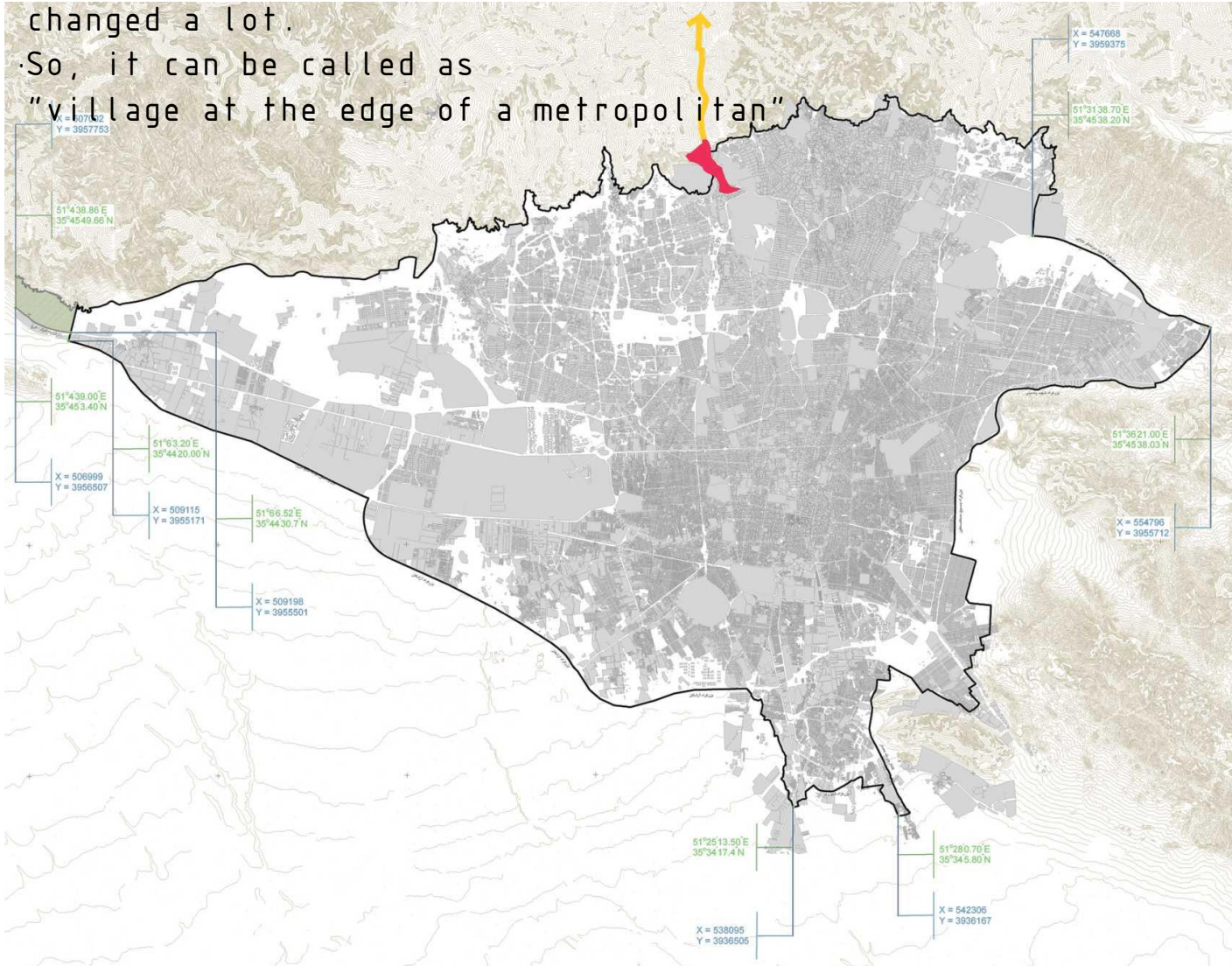


Darakeh village has been inhabited around 815 C.E. But after the time Tehran became the capital of Iran, at 1795, it gained more importance.

# WHAT

Today although Darakeh is attached to Tehran, it has not been changed a lot.

So, it can be called as "village at the edge of a metropolitan"



HOOKAH  
TEA

FOOD

## WHAT

There is an old Iranian tradition to go to " Ghahve-Khane" in free times. That is a old kind of restaurant which sells Persian food especially Kebab and also it is place to smoke hookah and drink tea with your companions.



# WHAT

HOOKAH  
TEA

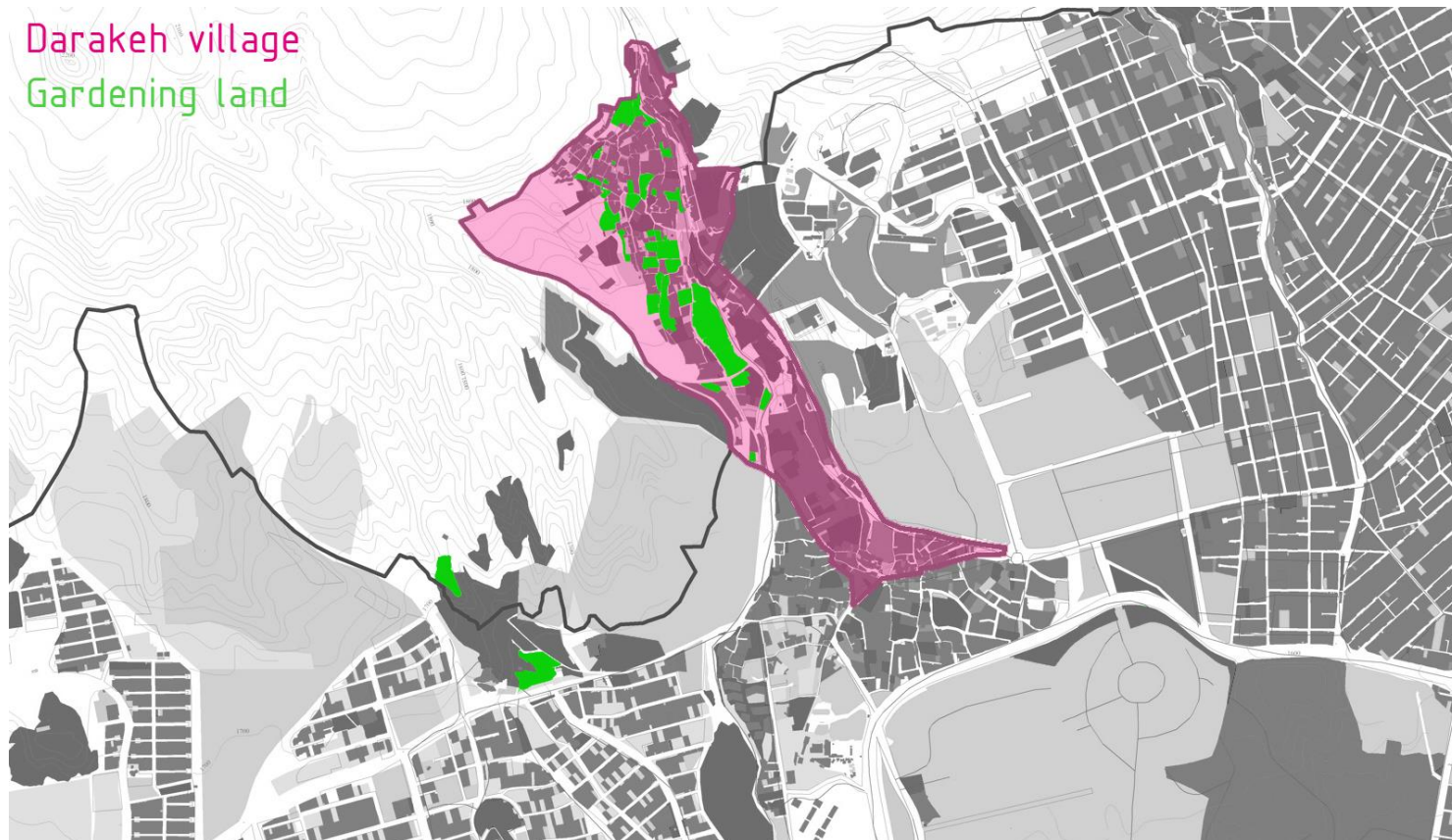
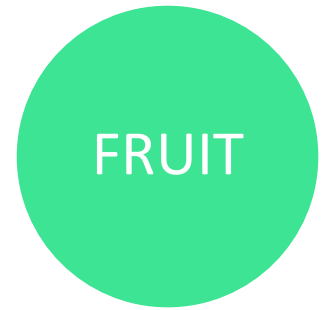
FOOD

Today people prefer to go out of the city for "Ghahve-Khane"



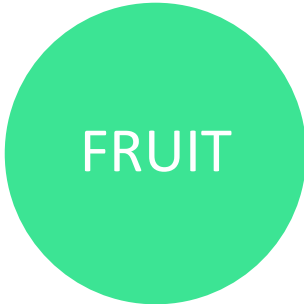
# WHAT

There is still many gardening for local fruit inside the village and also in mountains.



# WHAT

Some part of gardening production are sold at Darakeh to visitors

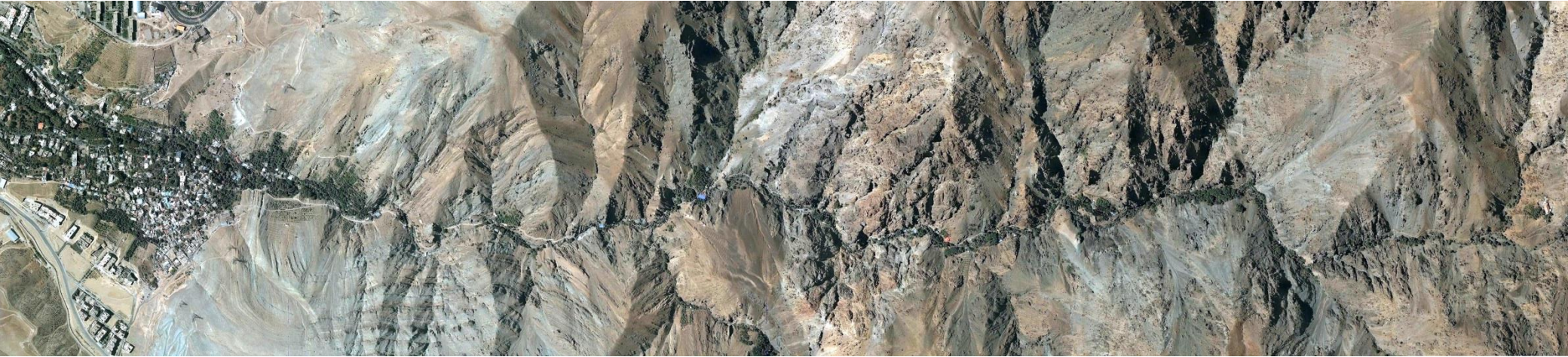




# WHO



# WHO



Part 1  
35%

Users type:

|          |     |
|----------|-----|
| Families | 35% |
| Couples  | 35% |
| Friend g | 20% |
| Hikers   | 10% |

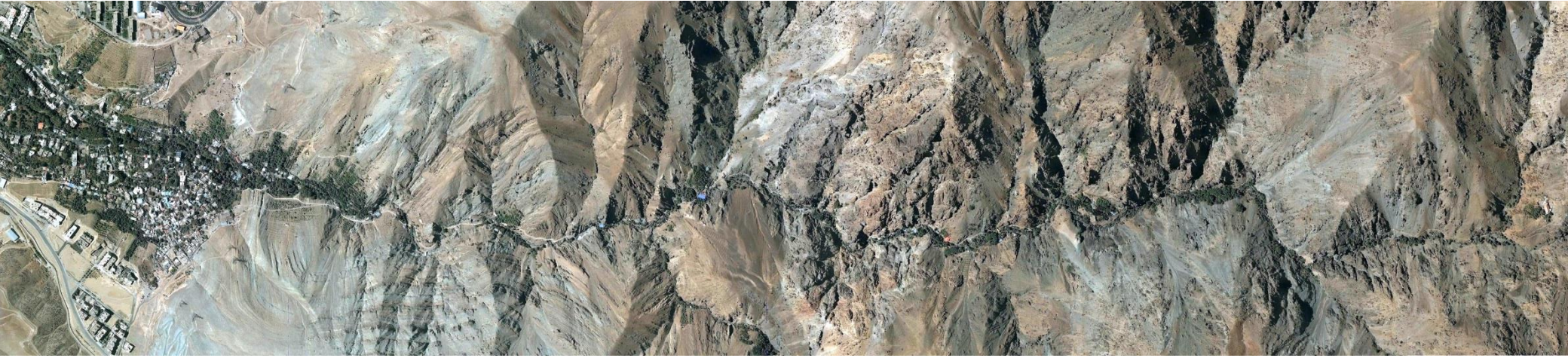
Part 2  
50%

|               |     |
|---------------|-----|
| Friend groups | 35% |
| Couples       | 35% |
| Families      | 20% |
| Hikers        | 10% |

Part 3  
15%

|               |     |
|---------------|-----|
| Hikers        | 70% |
| Friend groups | 20% |
| Couples       | 10% |
| Families      | 0   |

# WHICH



## Part 1

Number of  
Ghavekhaneh 19  
Vendor 8




## Part 2

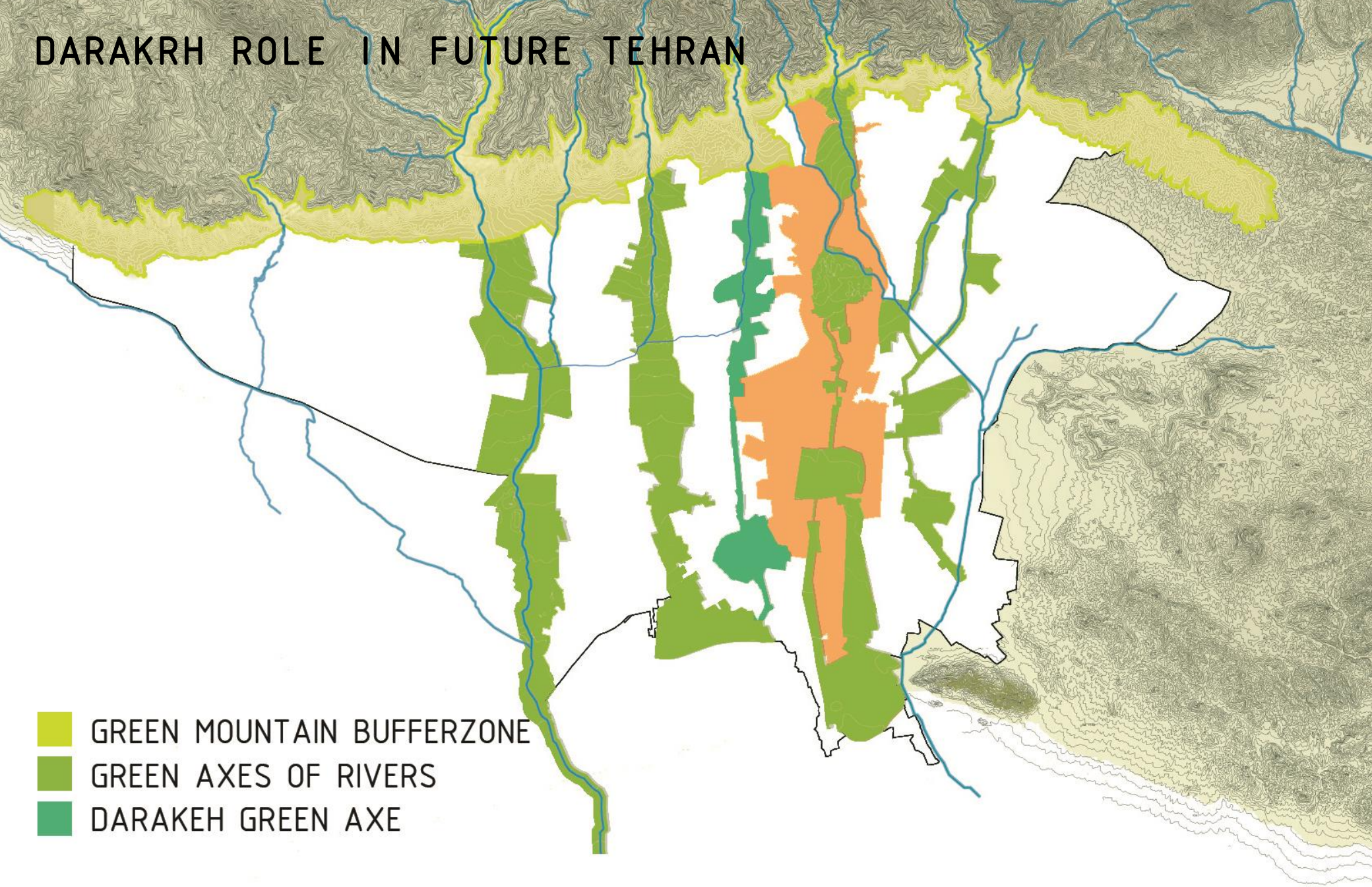
Ghaveh-khaneh 20  
Vendor 13

## Part 3

Ghaveh-khaneh 6  
Vendor 0

# DARAKRH ROLE IN FUTURE TEHRAN

-  GREEN MOUNTAIN BUFFERZONE
-  GREEN AXES OF RIVERS
-  DARAKEH GREEN AXE



# PROJECT

سفره خانه سنتی  
بابا رضا



# PART 1



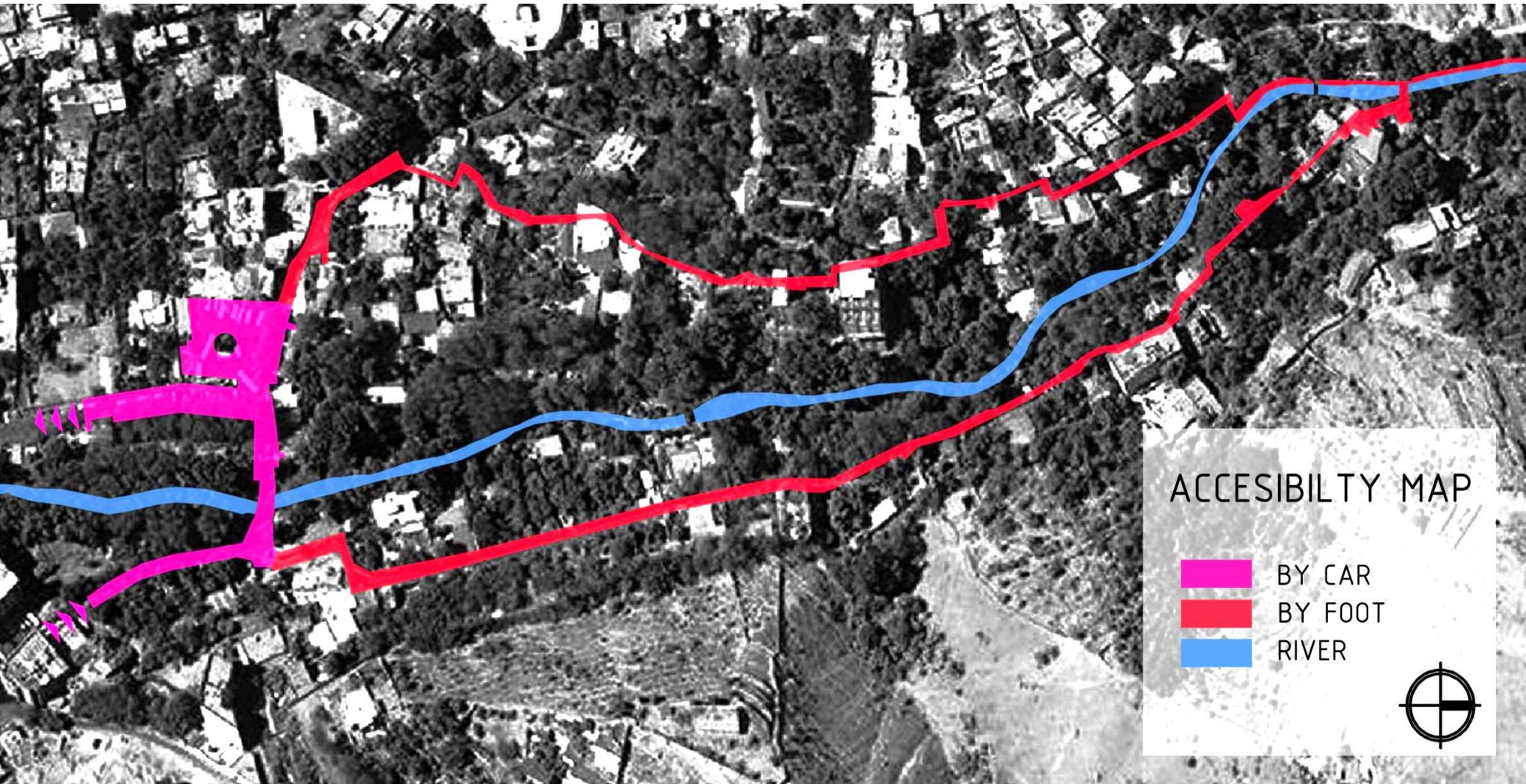
# PART 1

## DARAKEH SQUARE VIEW



# PART 1

## Existing access to Darakeh



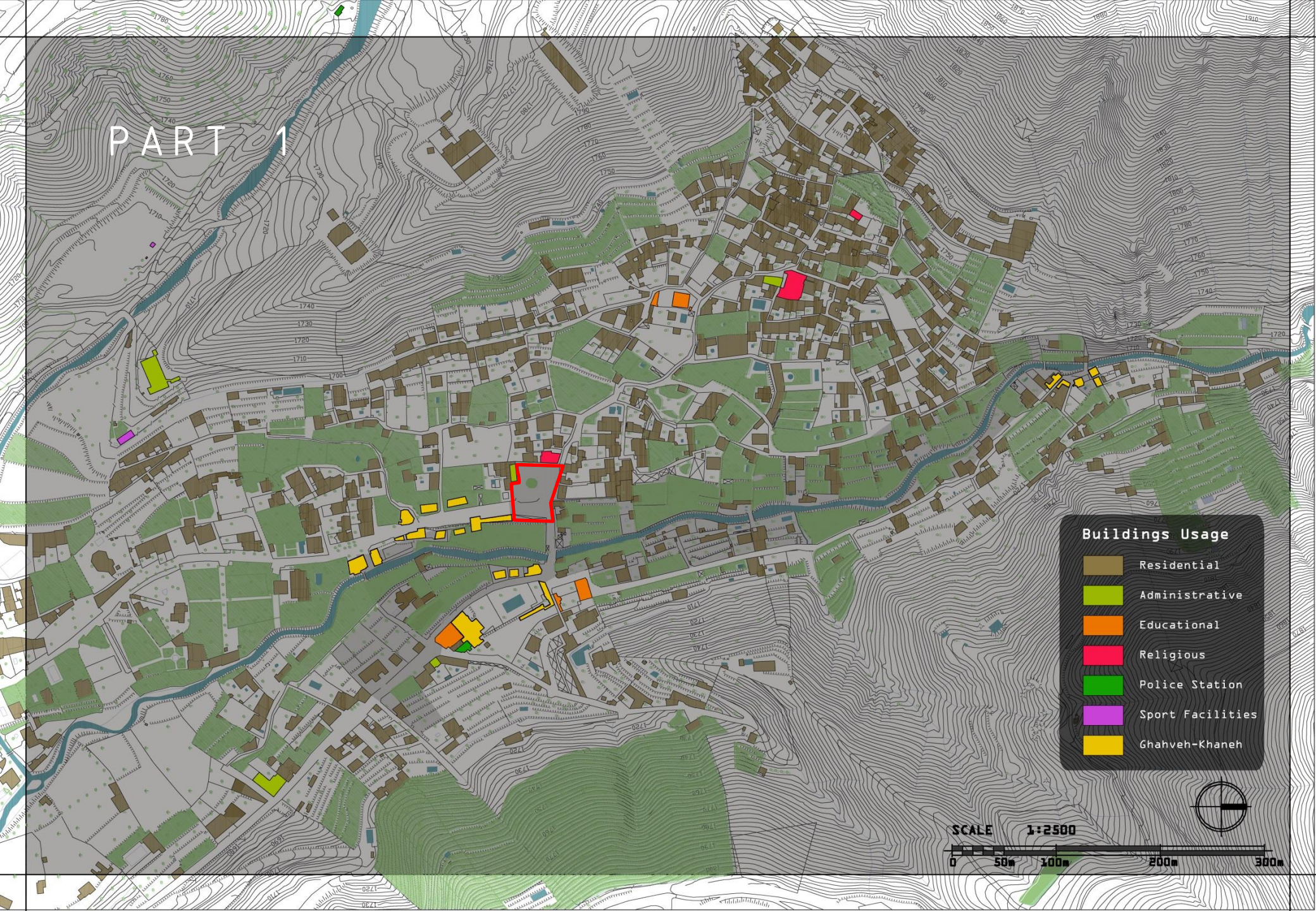
### ACCESSIBILITY MAP

- BY CAR
- BY FOOT
- RIVER



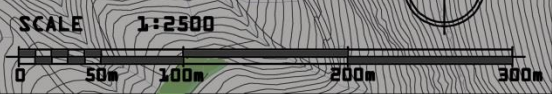


# PART 1

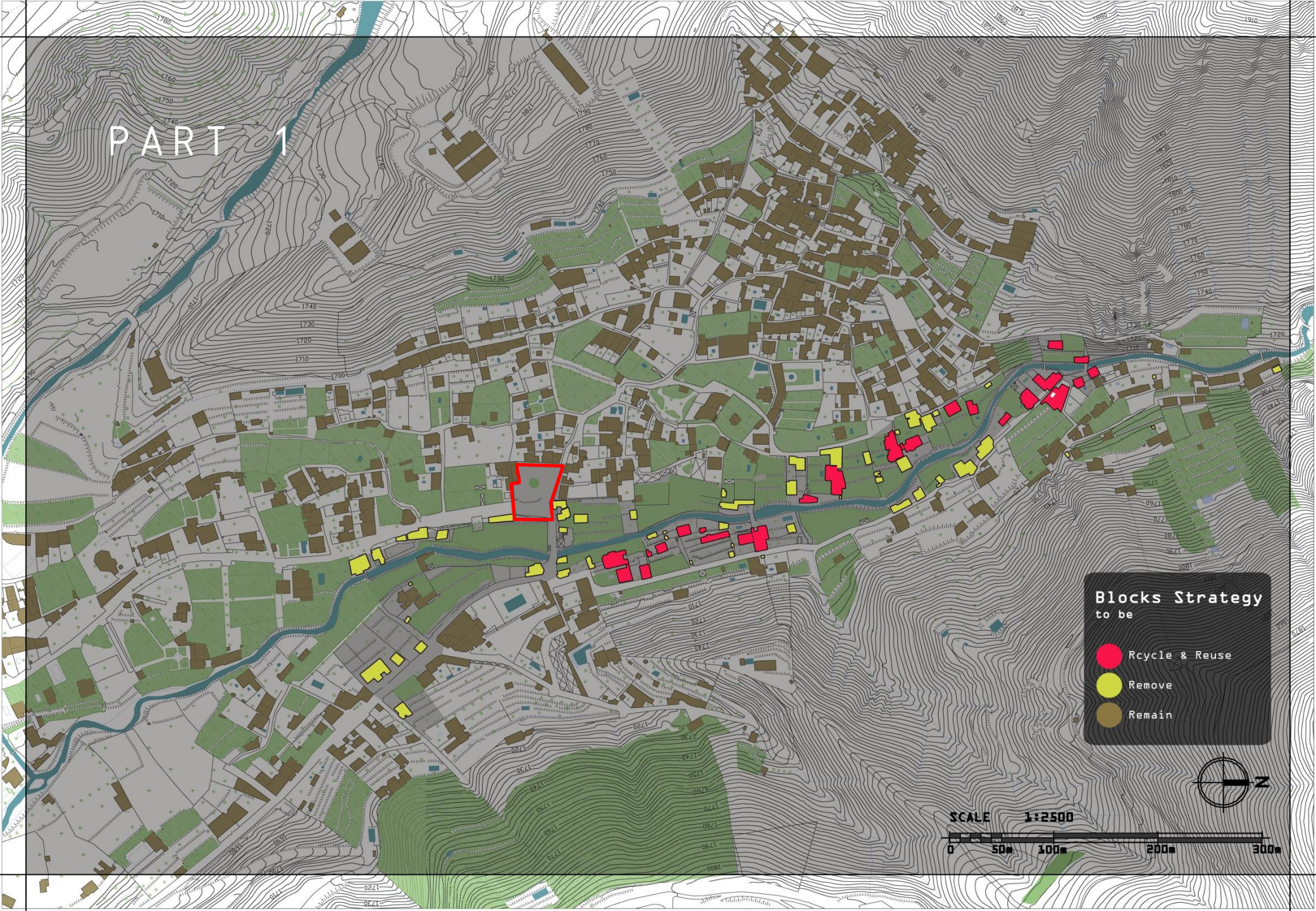


## Buildings Usage

- Residential
- Administrative
- Educational
- Religious
- Police Station
- Sport Facilities
- Ghahveh-Khaneh

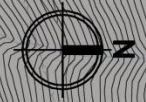


# PART 1



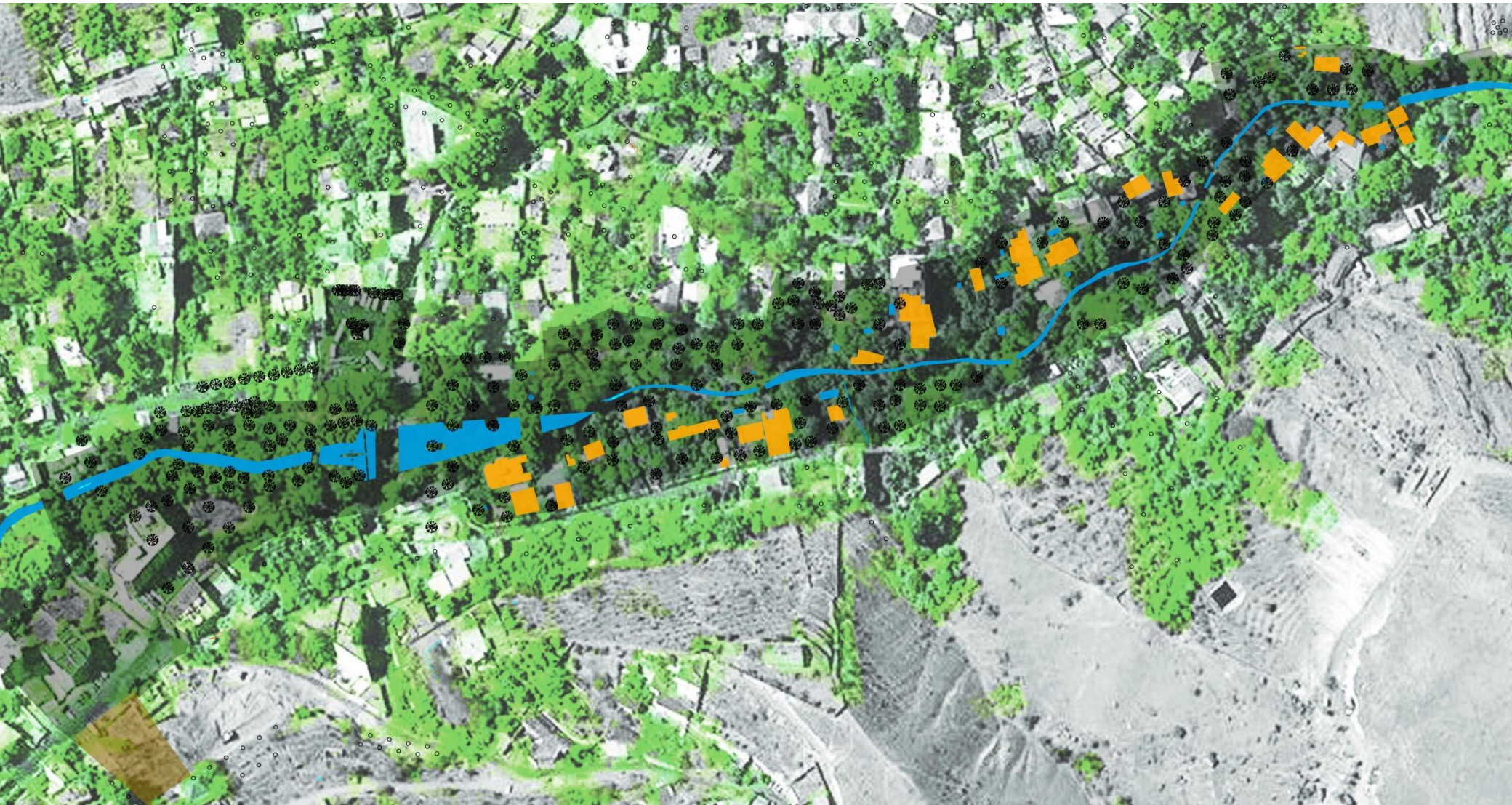
**Blocks Strategy**  
to be

- Recycle & Reuse
- Remove
- Remain



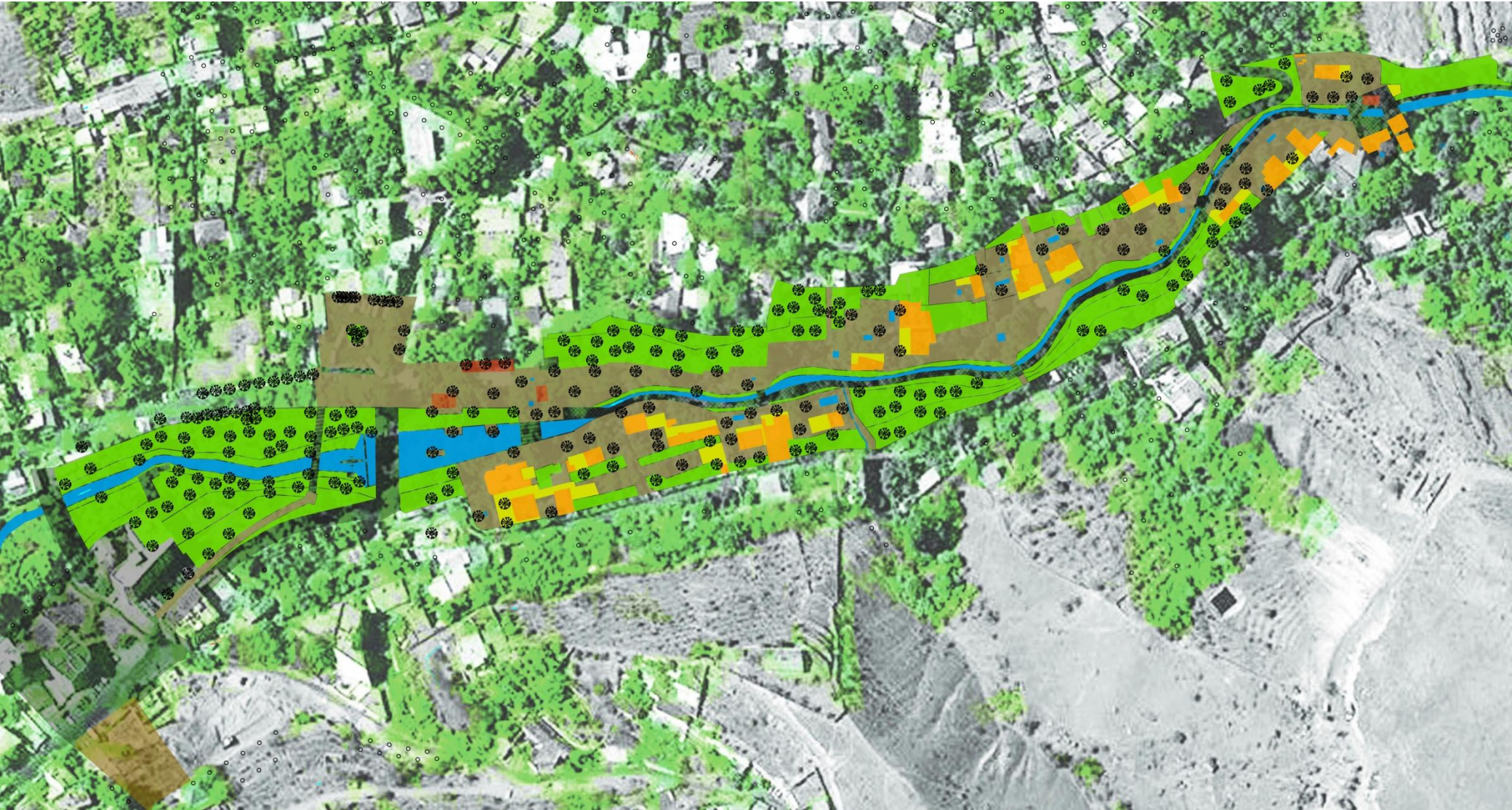
# PART 1

Layers: REMAIN {building to reuse, Tree}



# PART 1

Layers: ADD {Buffer zone, Ghahveh-Khaneh Extension, Vendor Stall}



# PART 1

Layers: ADD {New Threes, Openings}



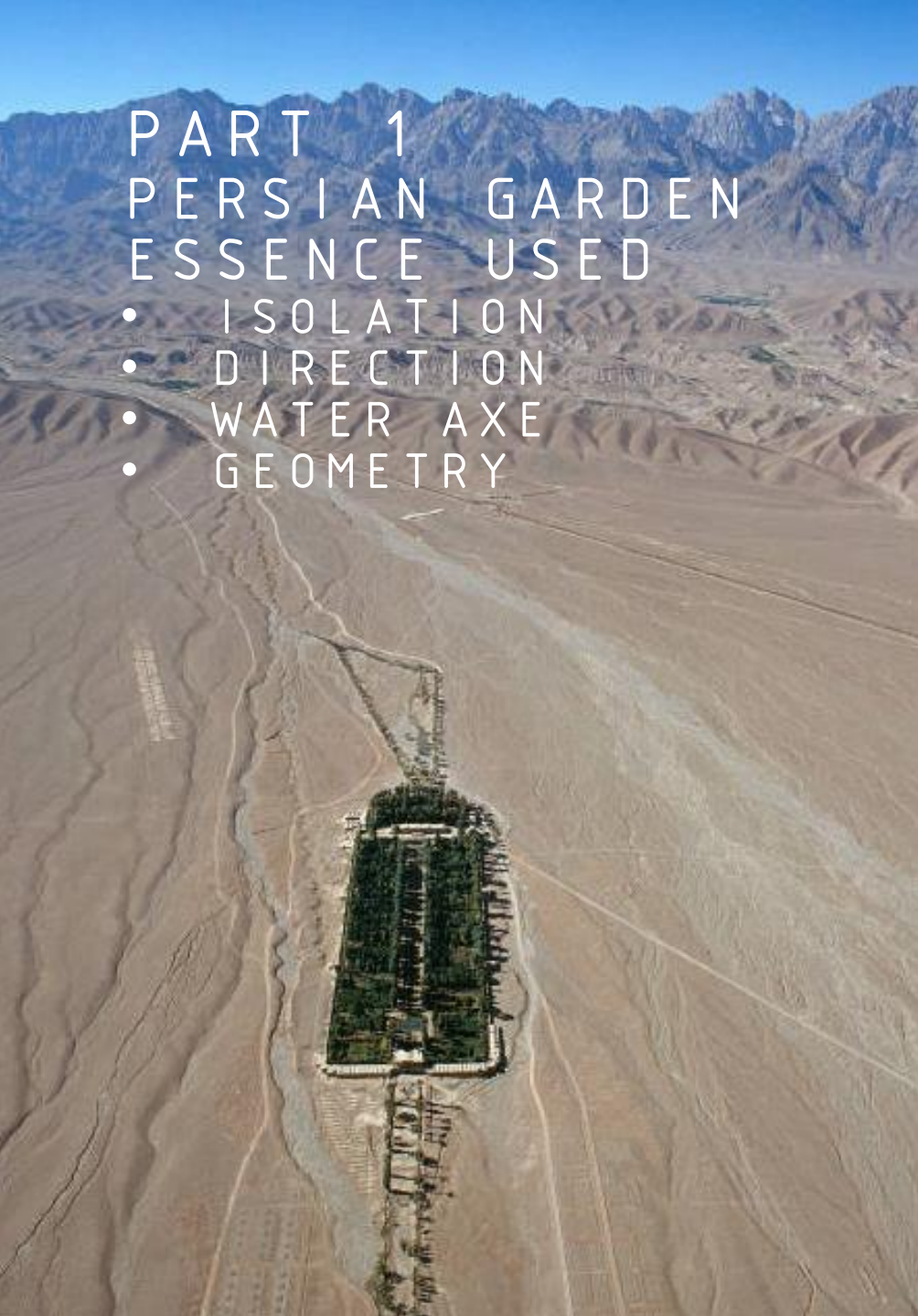
# PART 1

Layers: ADD {Walking bridge, New car bridge, Micro water turbine, Proposing parking lot}



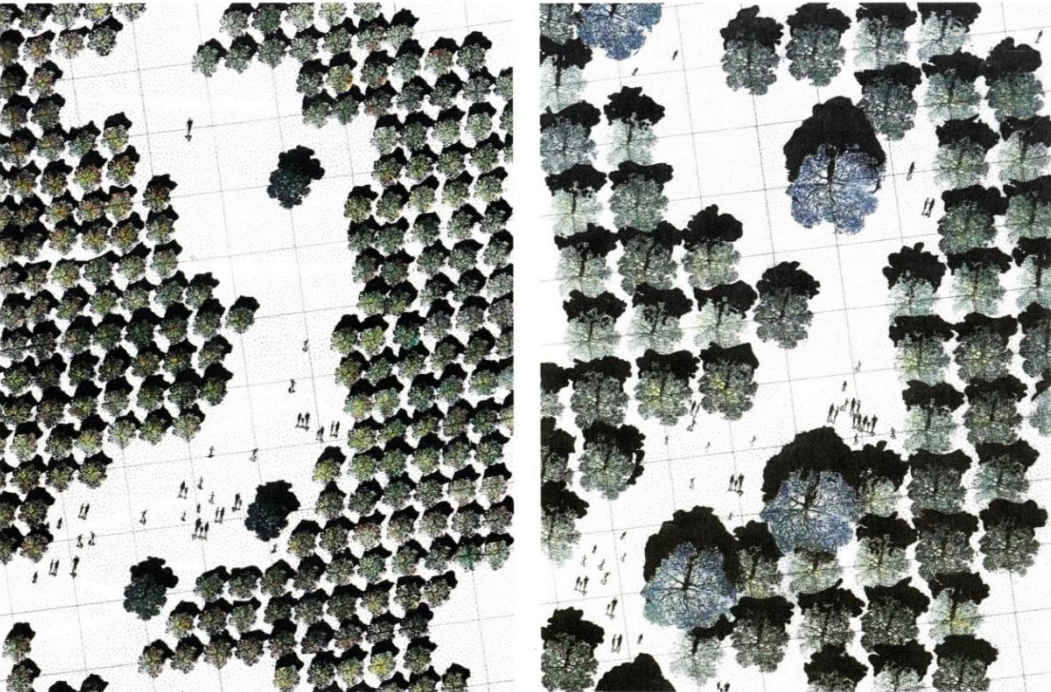
# PART 1 PERSIAN GARDEN ESSENCE USED

- ISOLATION
- DIRECTION
- WATER AXE
- GEOMETRY



# PART 1

## REVIEWED SAMPLES



Greenwich Peninsula by Michel Desvigne  
(2000)



Ørnesvingen viewpoint by 3RW Arkitekter  
(2005)



# PART 1

## REVIEWED SAMPLES



Vallparadís Footbridge by Pedelta Structural Engineers  
(2007)

The Laxey Wheel by Robert Casement  
(1854)



PART 2

# PART 2

## points and Lines



# PART 2

points are popular to sit



# PART 2 points are active



PART 2  
points have wide view



PART 2

and they are usually nice



## PART 2

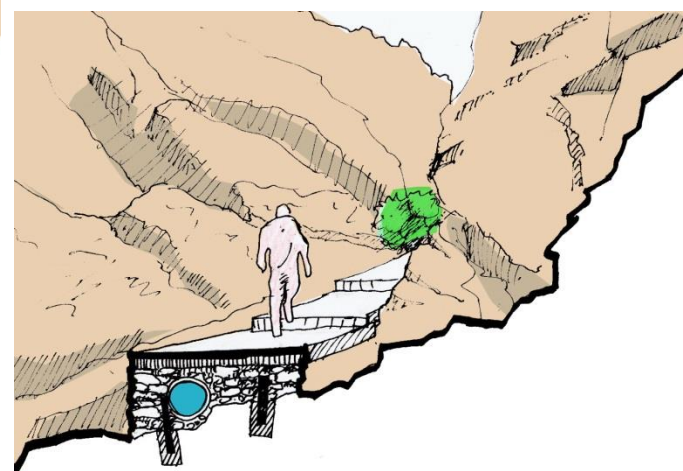
But they need to be improved





# PART 2

## Route problem solving



PART 2  
Point one



# PART 2

## REVIEWED SAMPLES



Tudela (club med) by MARTÍ FRANCH (2010)



Cardada Viewpoint by Paolo L. Bürgi (2010)

# PART 2

## REVIEWED SAMPLES



F.Q.S bridge by Carlo Scarpa (1963)



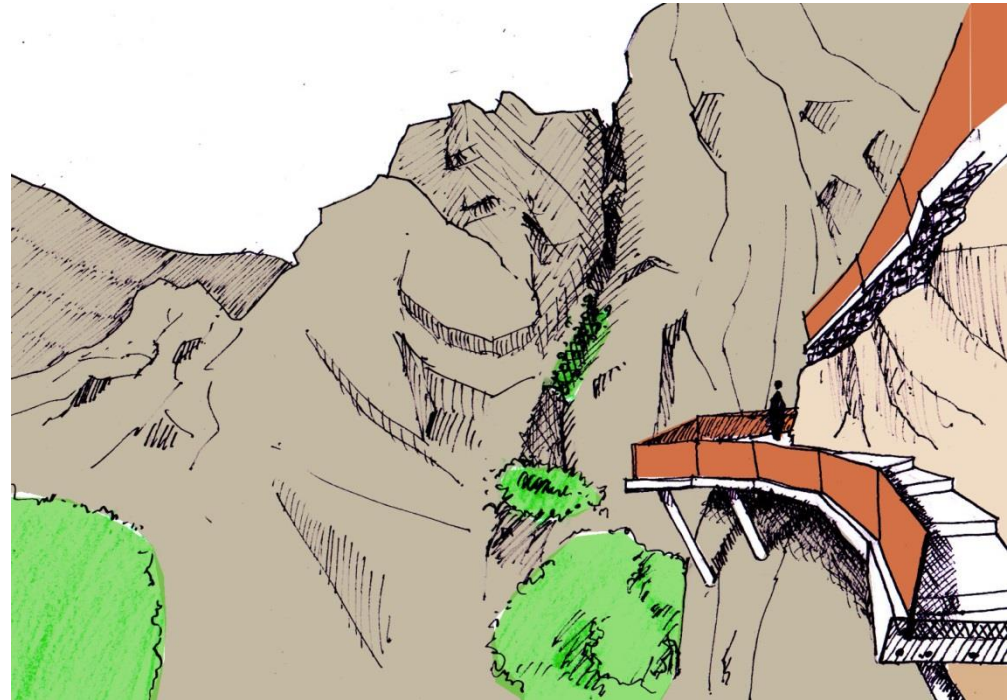
Vedahaugane by L.J. Berge, Z. Jelnicar (2010)



PART 3

# PART 3

Some essential modifications



THE END



DARAKEH MOUNTAIN ROUTE

PROTECT TO PROTECT