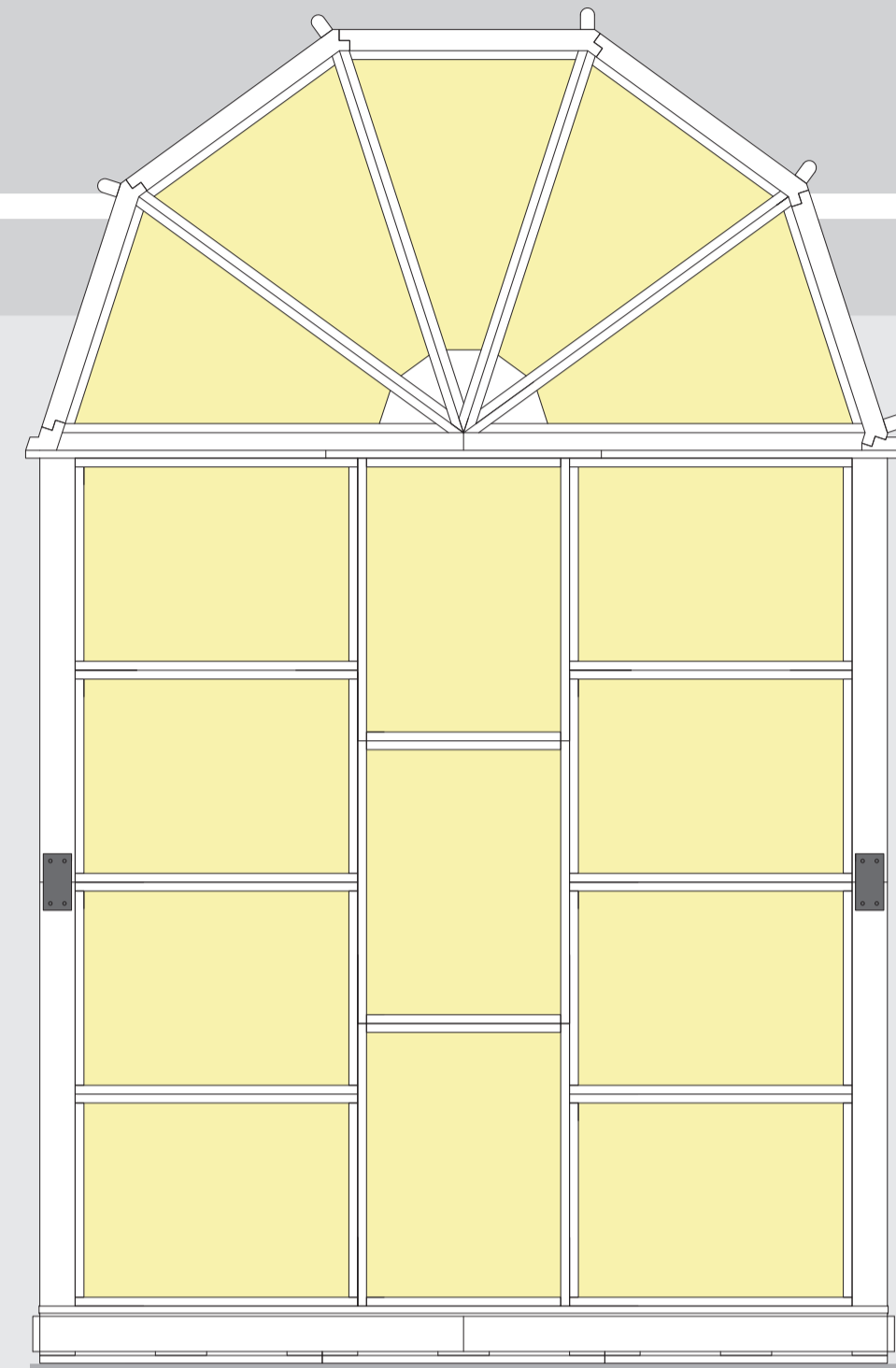
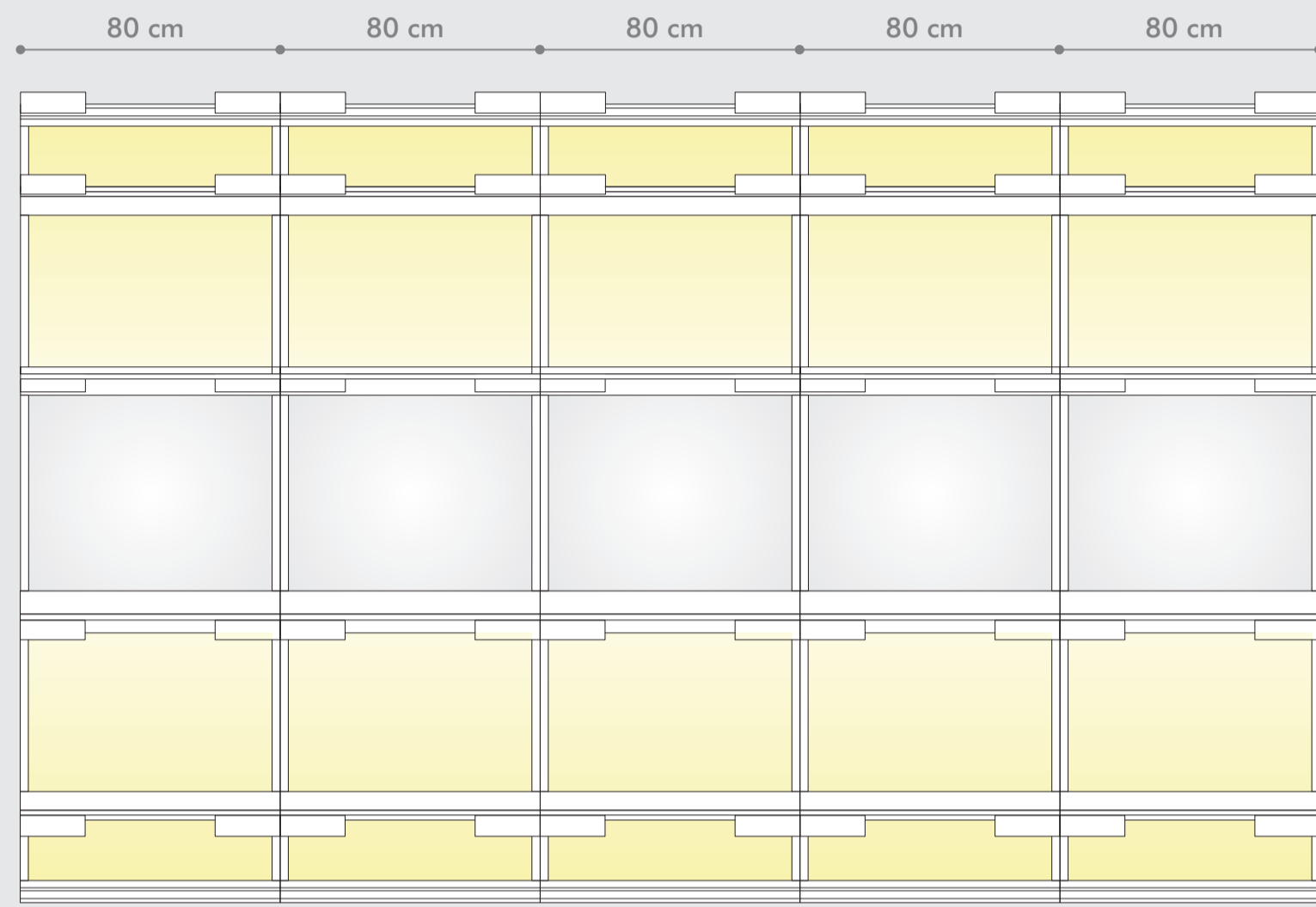


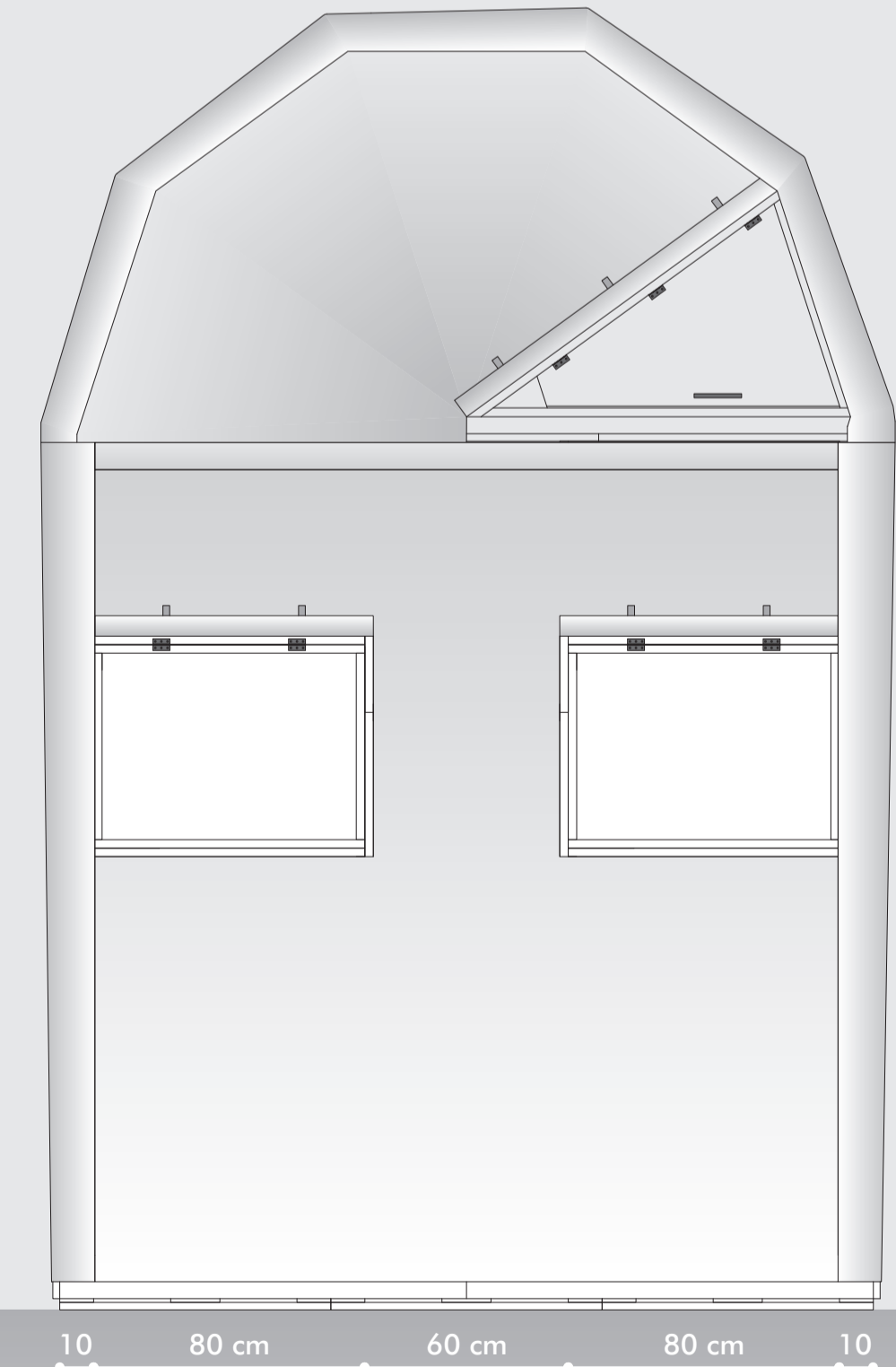
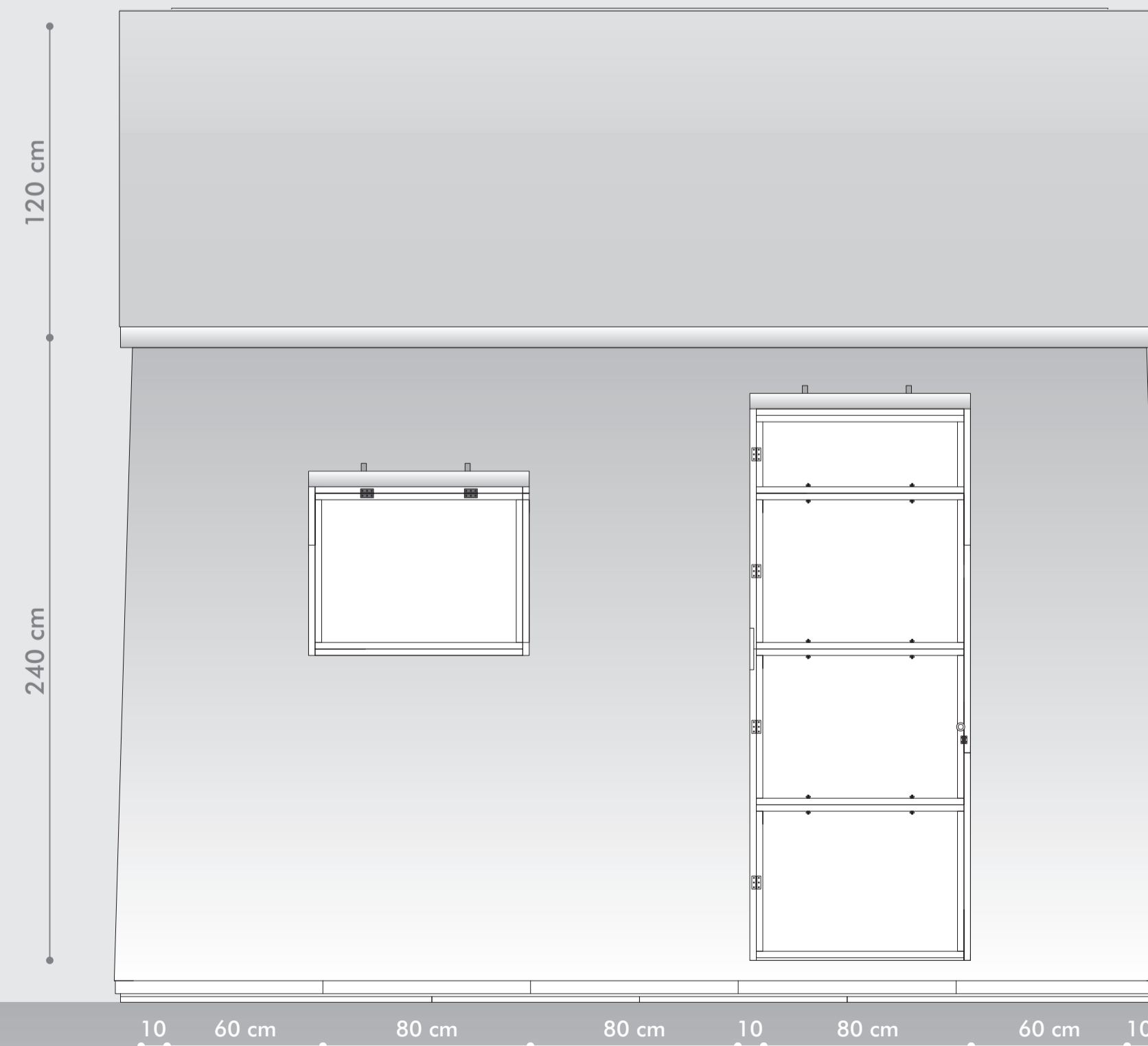
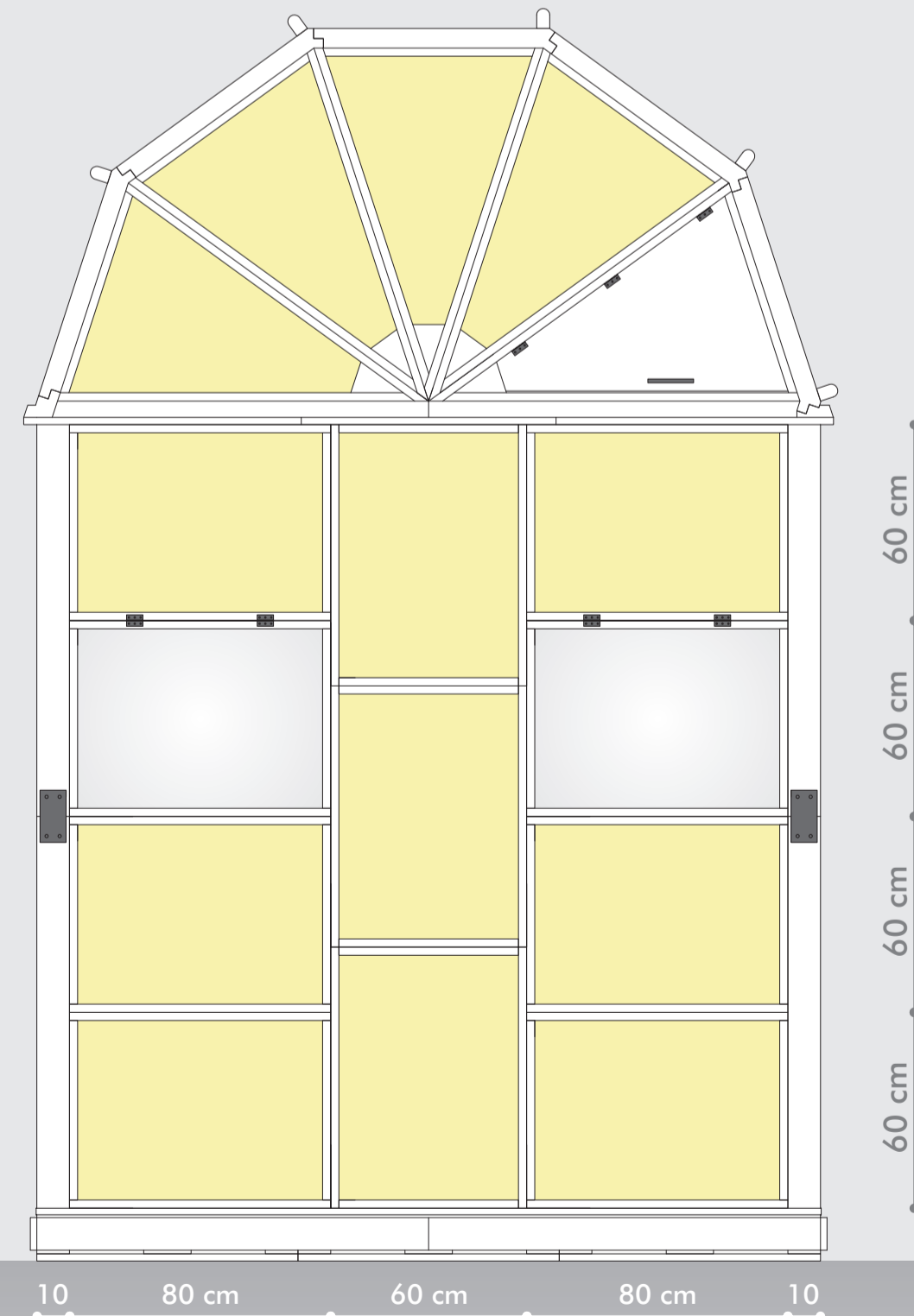
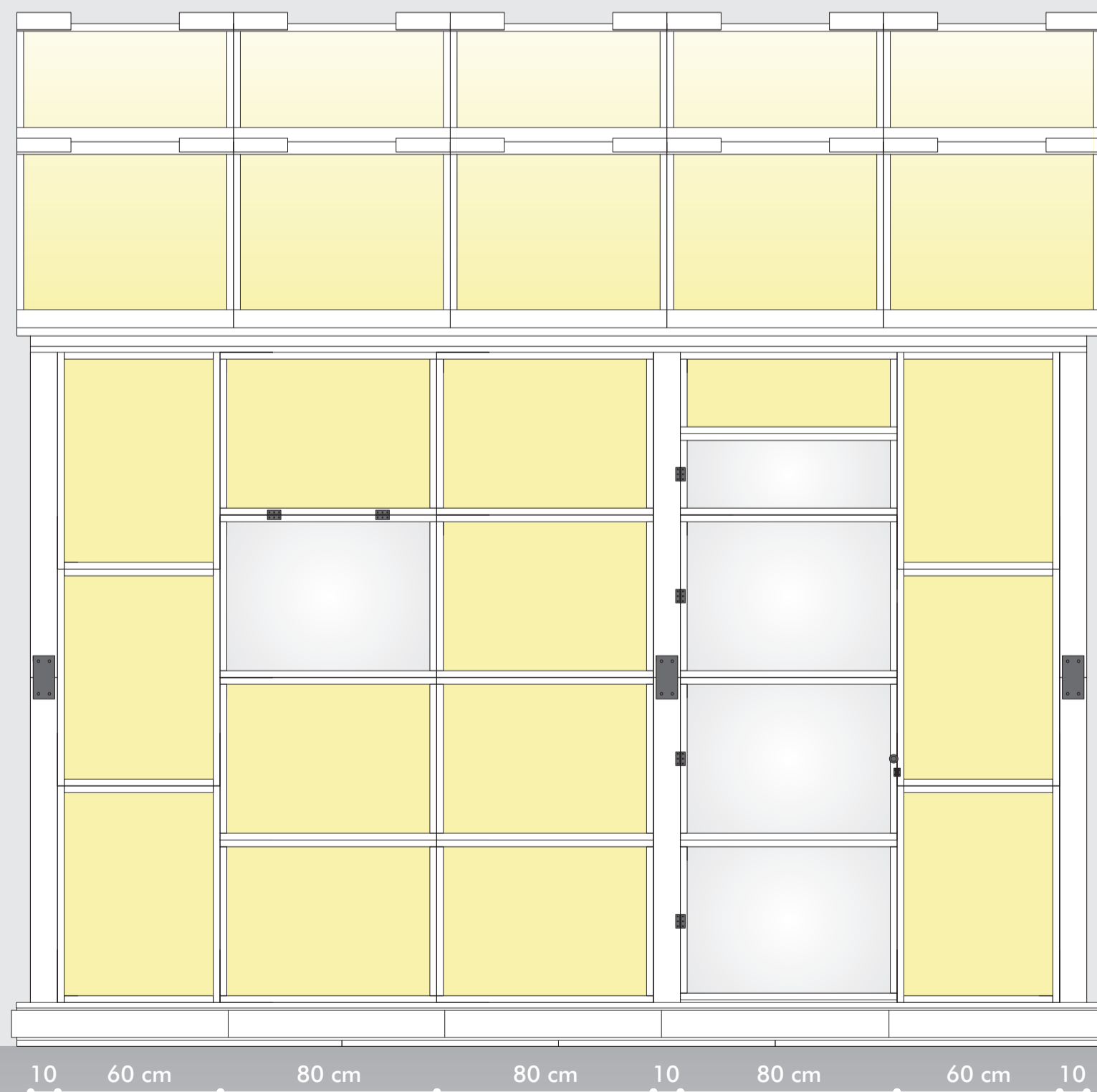
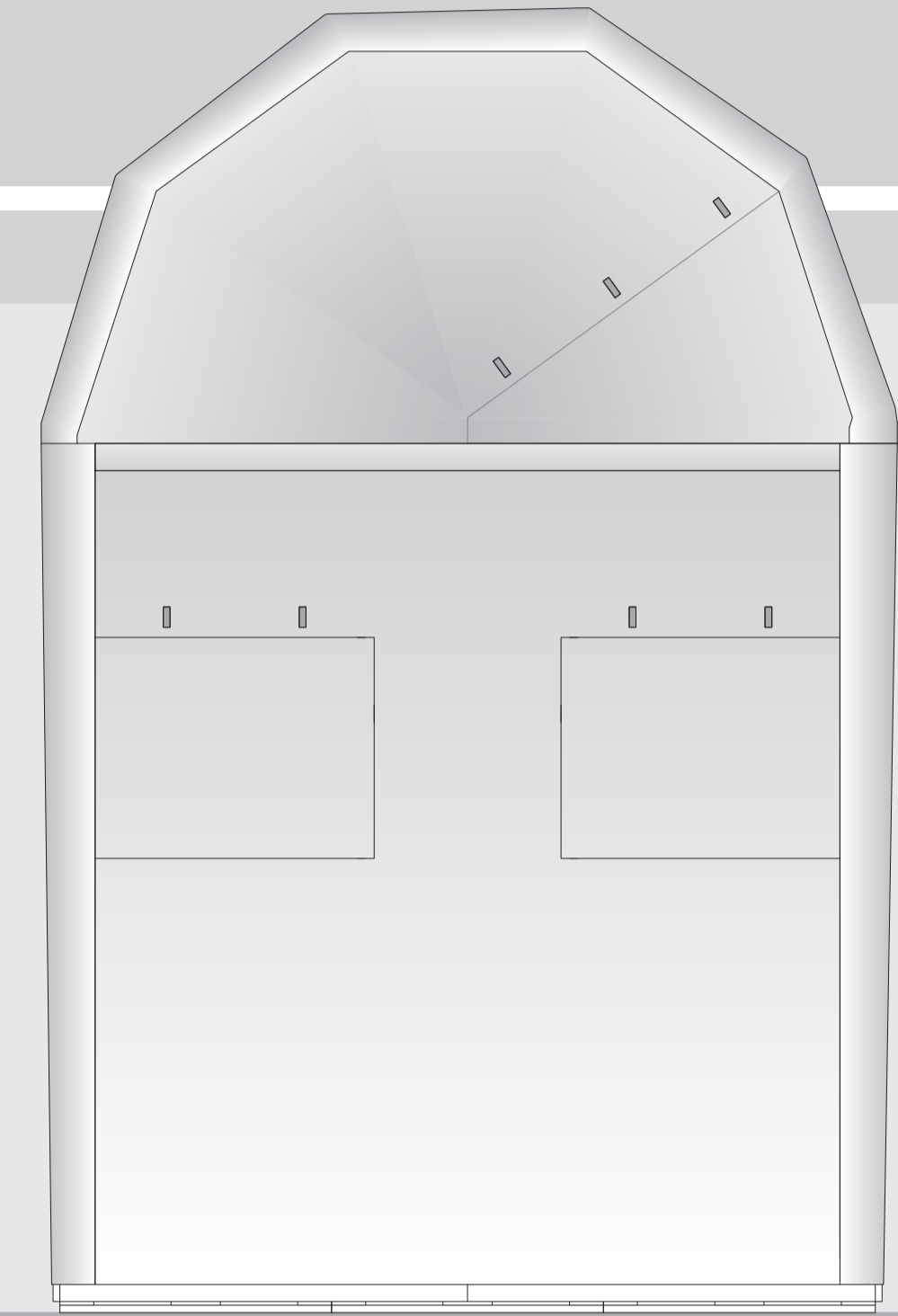
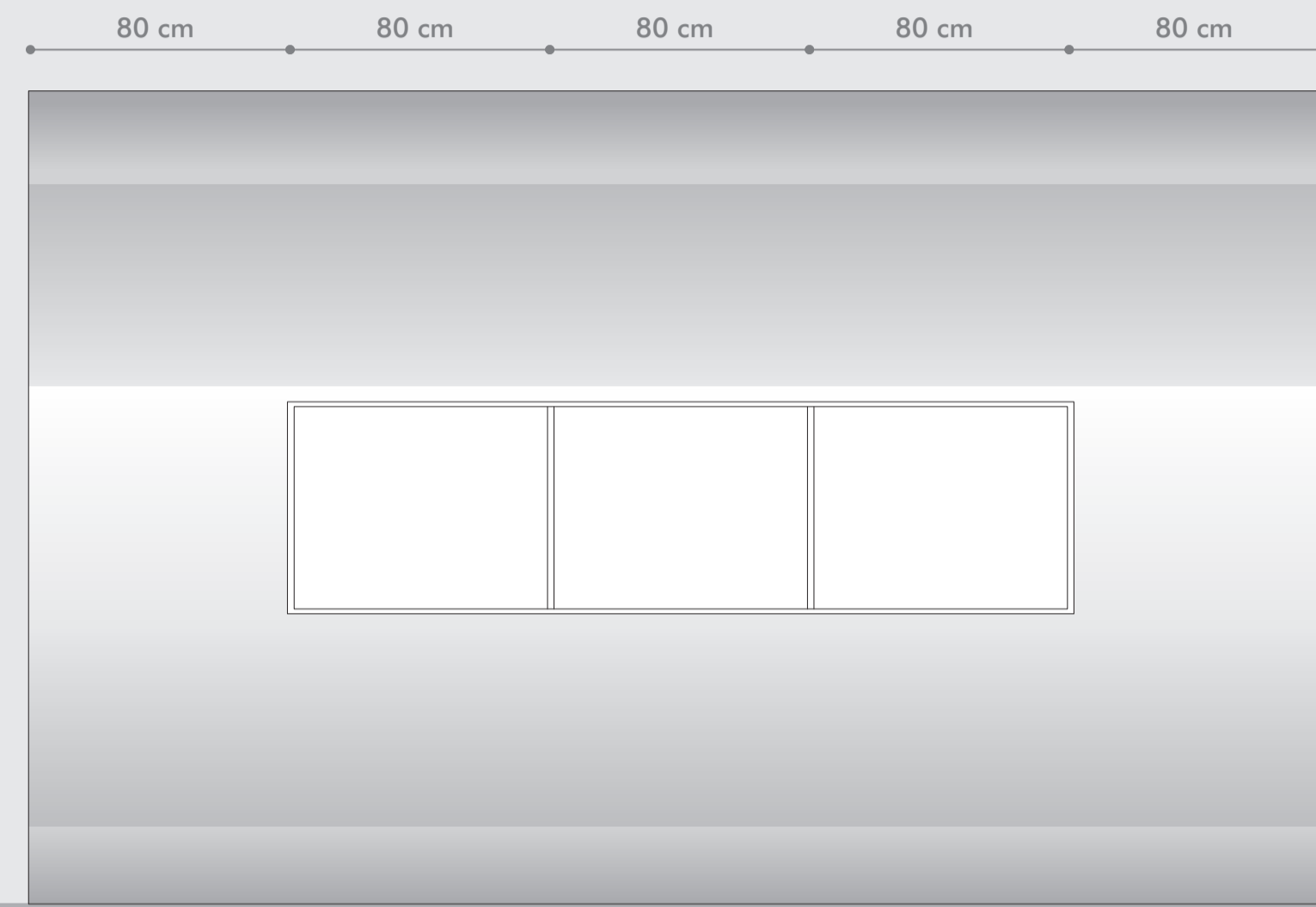
PROSPETTI ESTERNI STRUTTURA E TELO

APPROFONDIMENTO SU ALCUNI MATERIALI USATI

PROSPETTI STRUTTURA



PROSPETTI ESTERNO _ chiuso e aperto



PROSPETTI DELLA STRUTTURA E DEL TELO _ prospetti della struttura e del telo esterno in scala 1:20