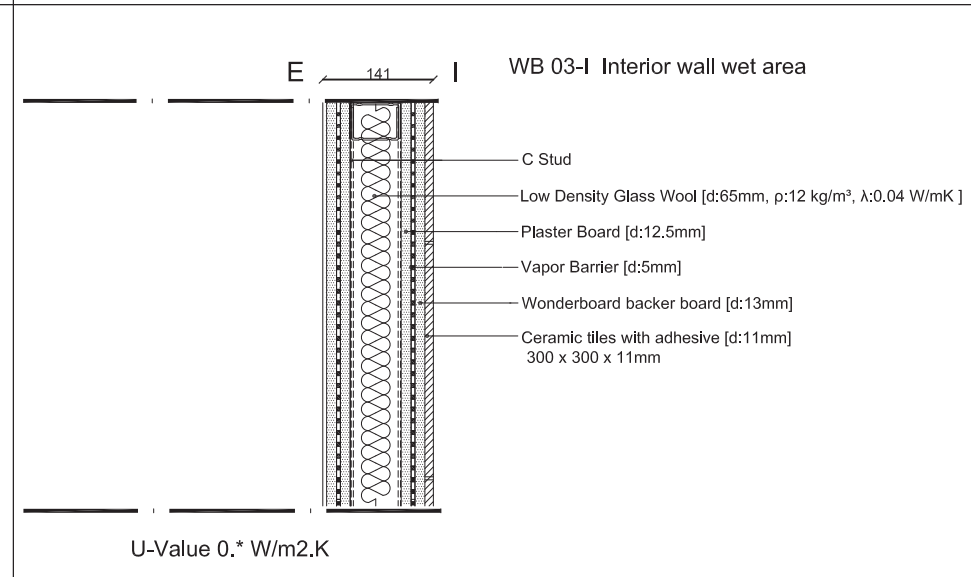
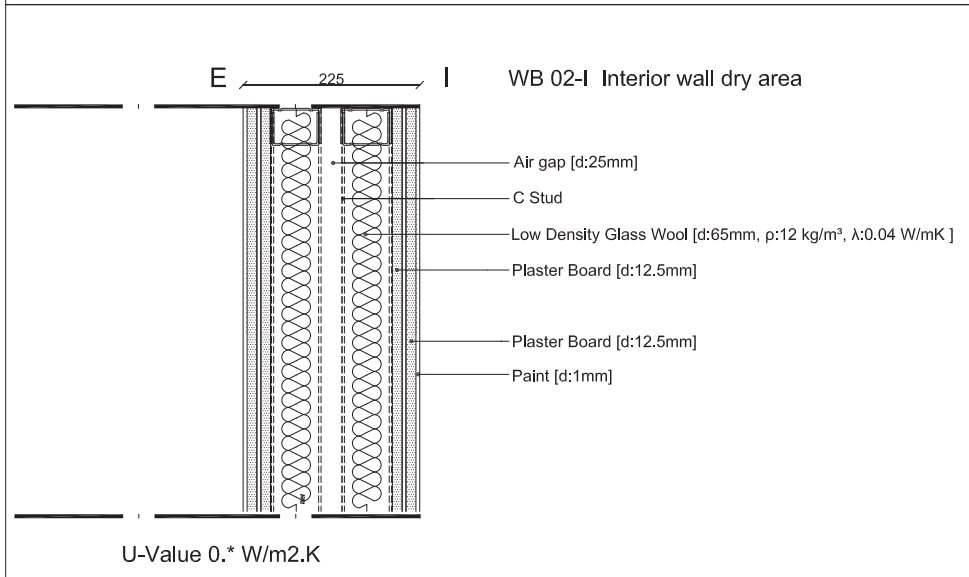
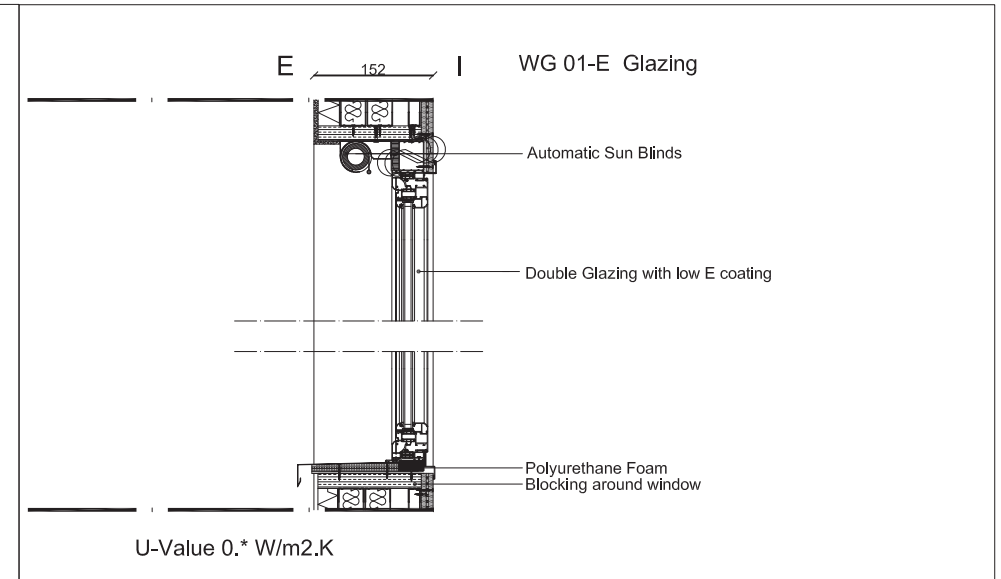
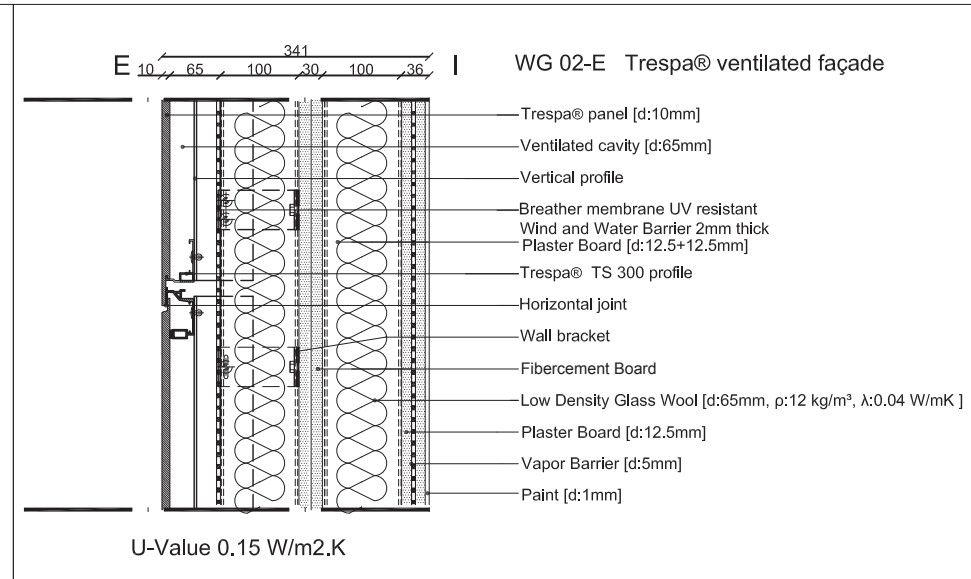
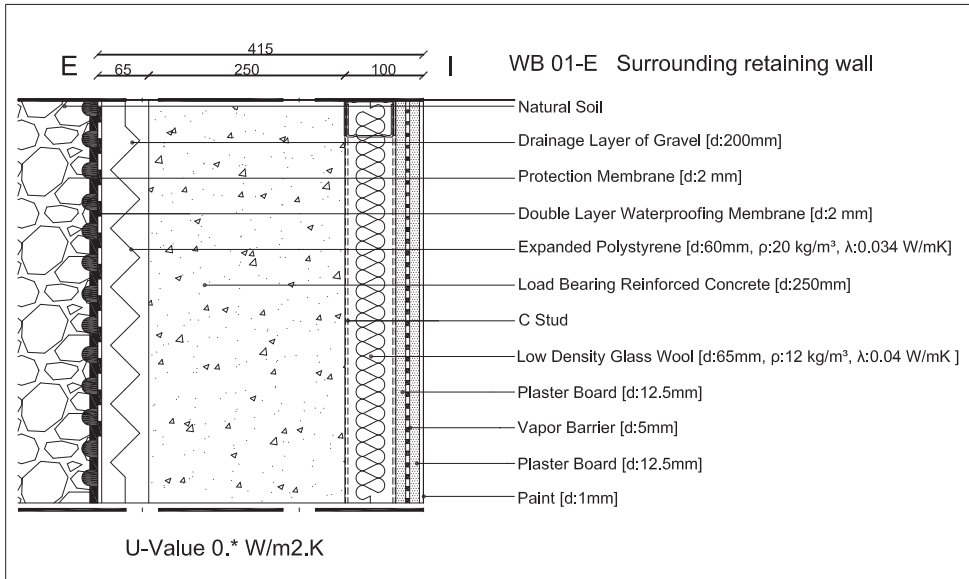
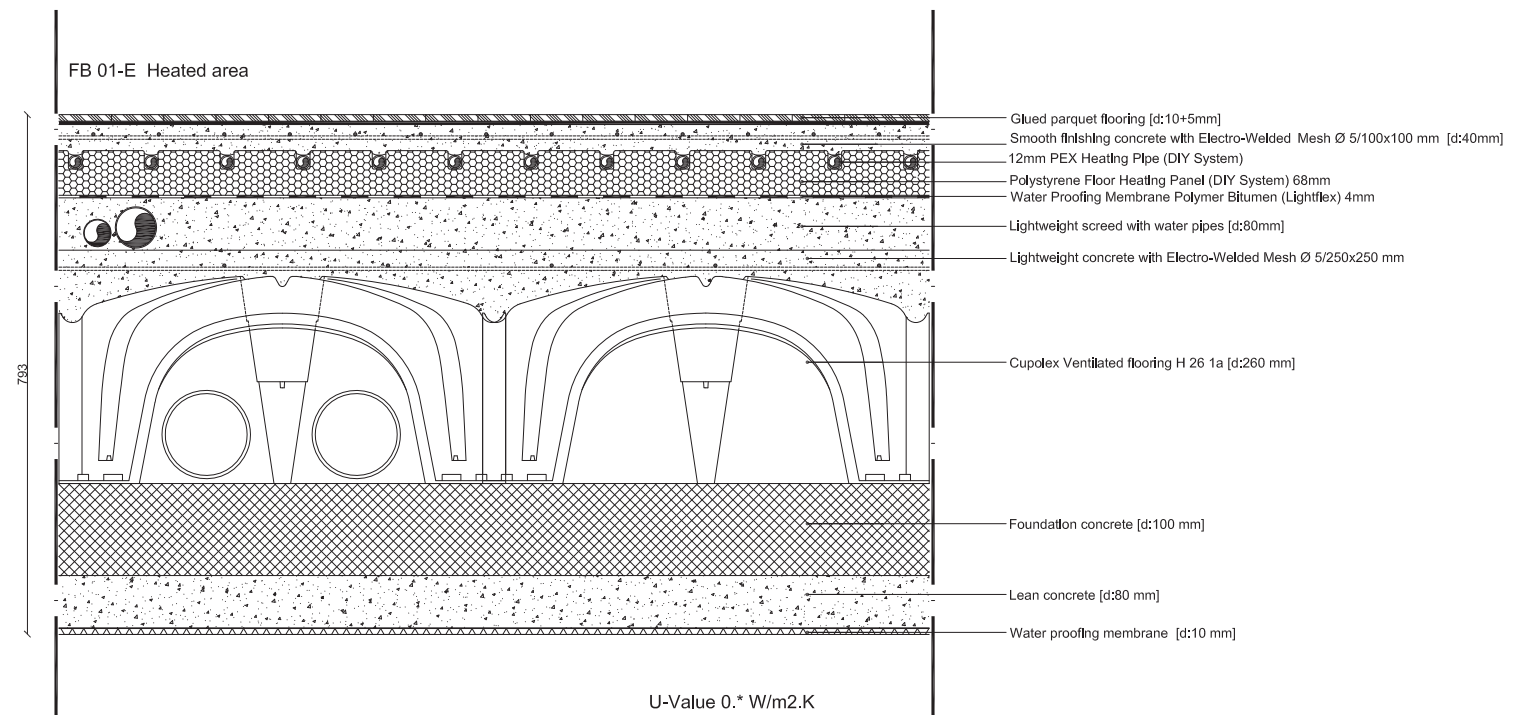
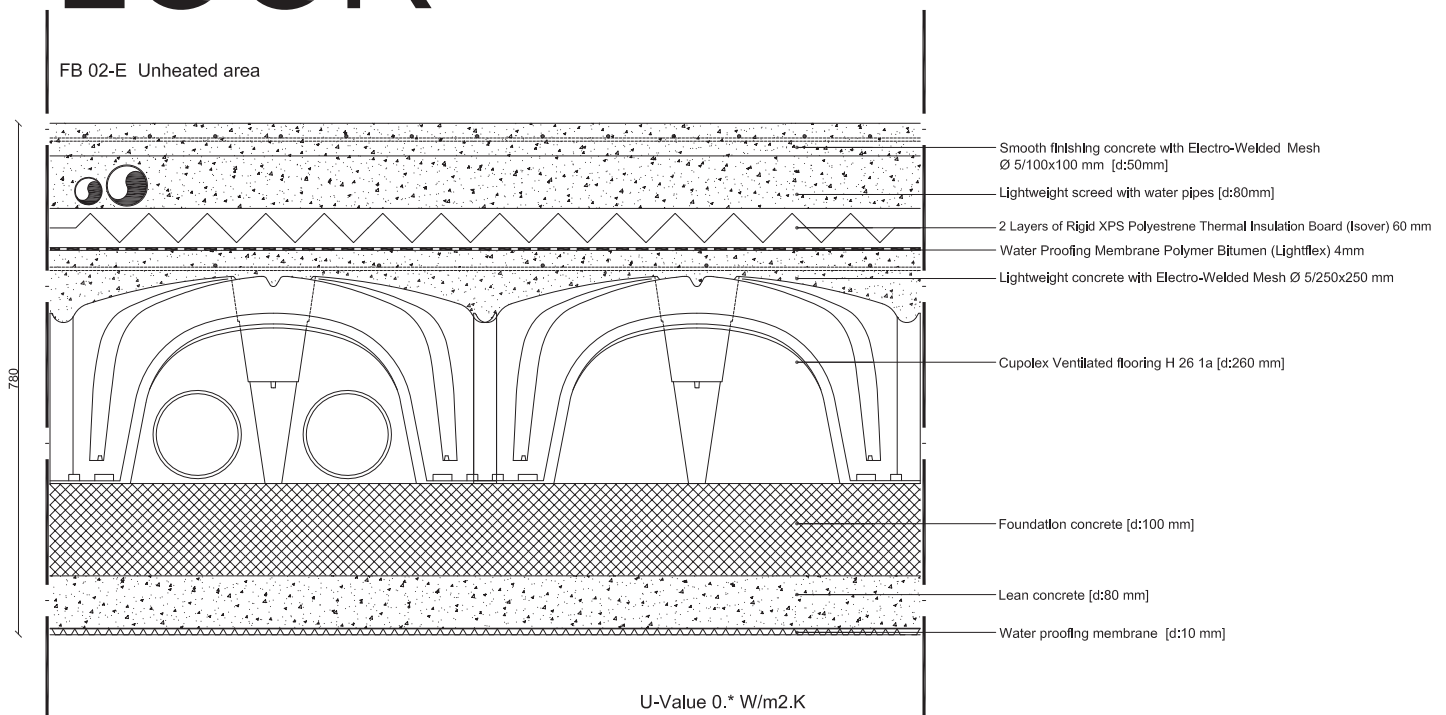


WALL

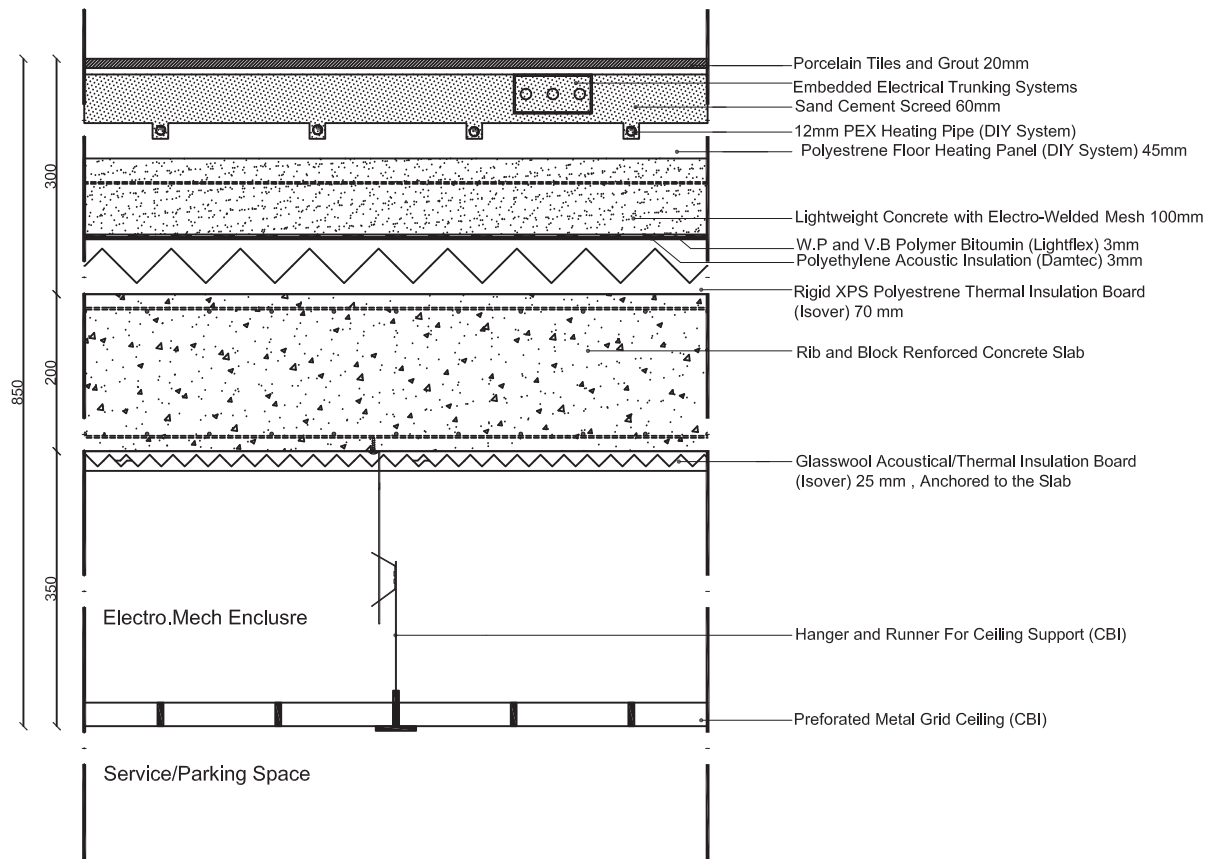


FLOOR



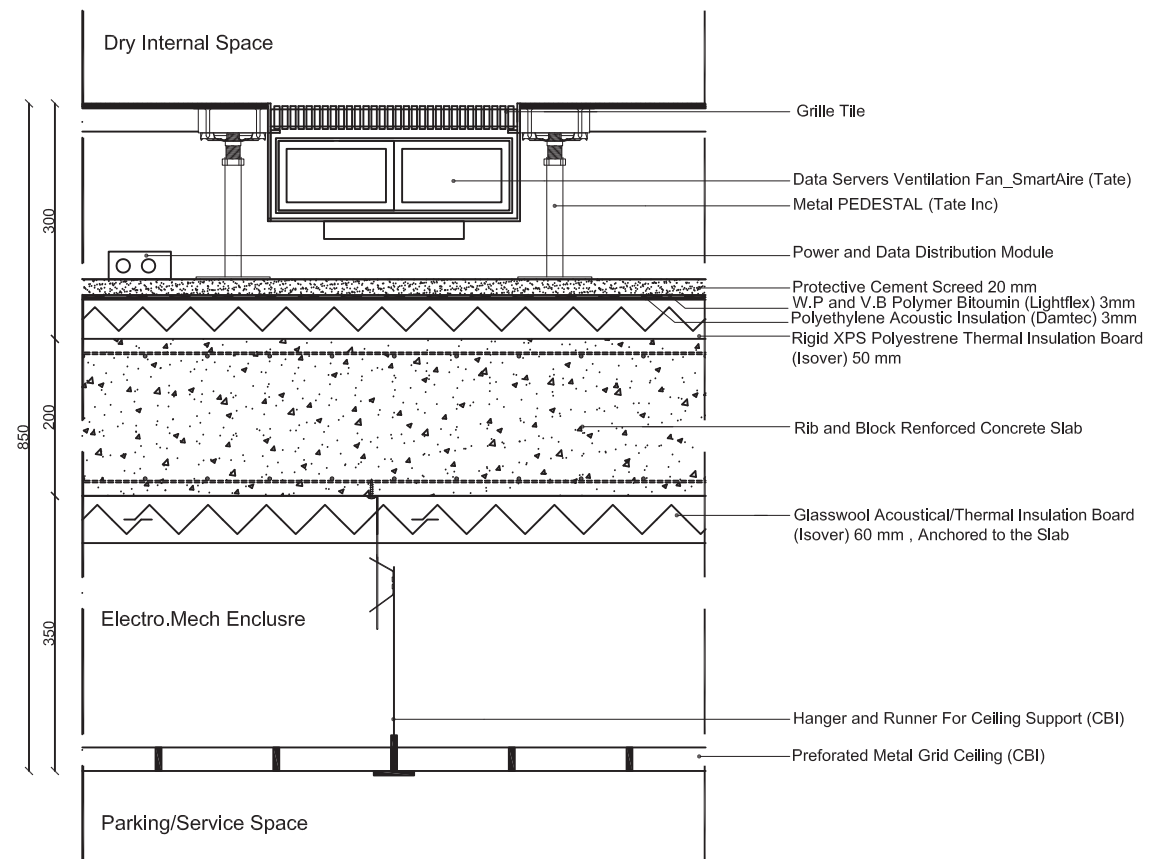
FLOOR

FG 01-1 Typical floor marble



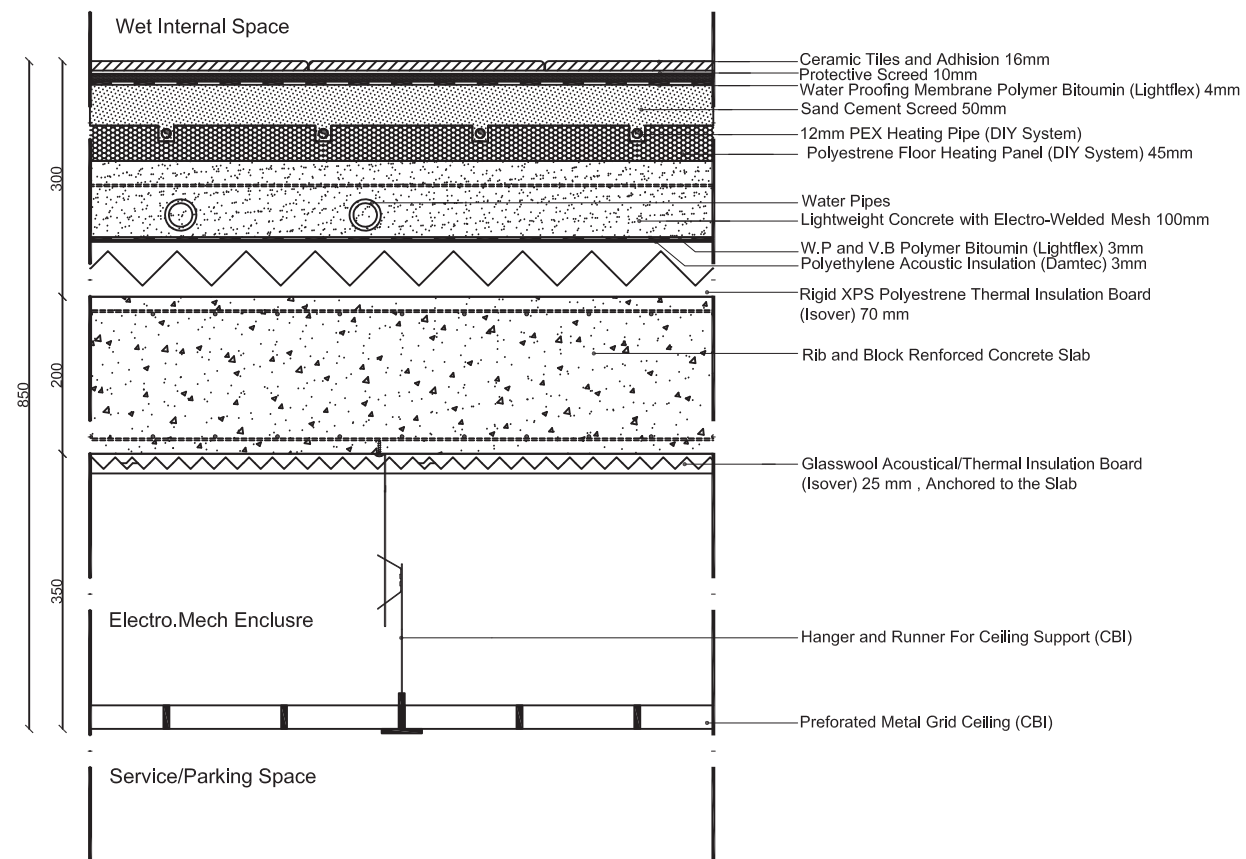
U-Value 0.2 W/m2.K

FG 03-I Raised floor for office



U-Value 0.2 W/m2.K

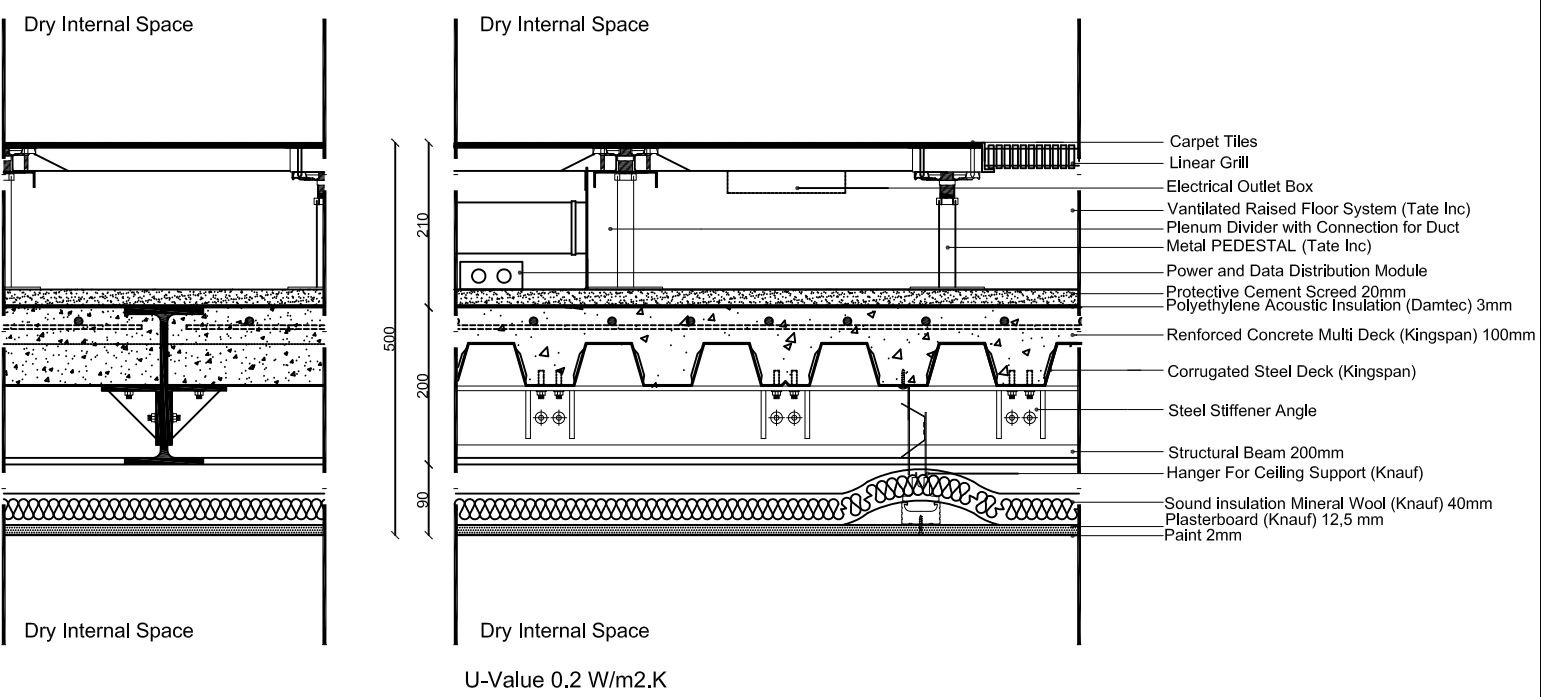
FG 02-I Wet area



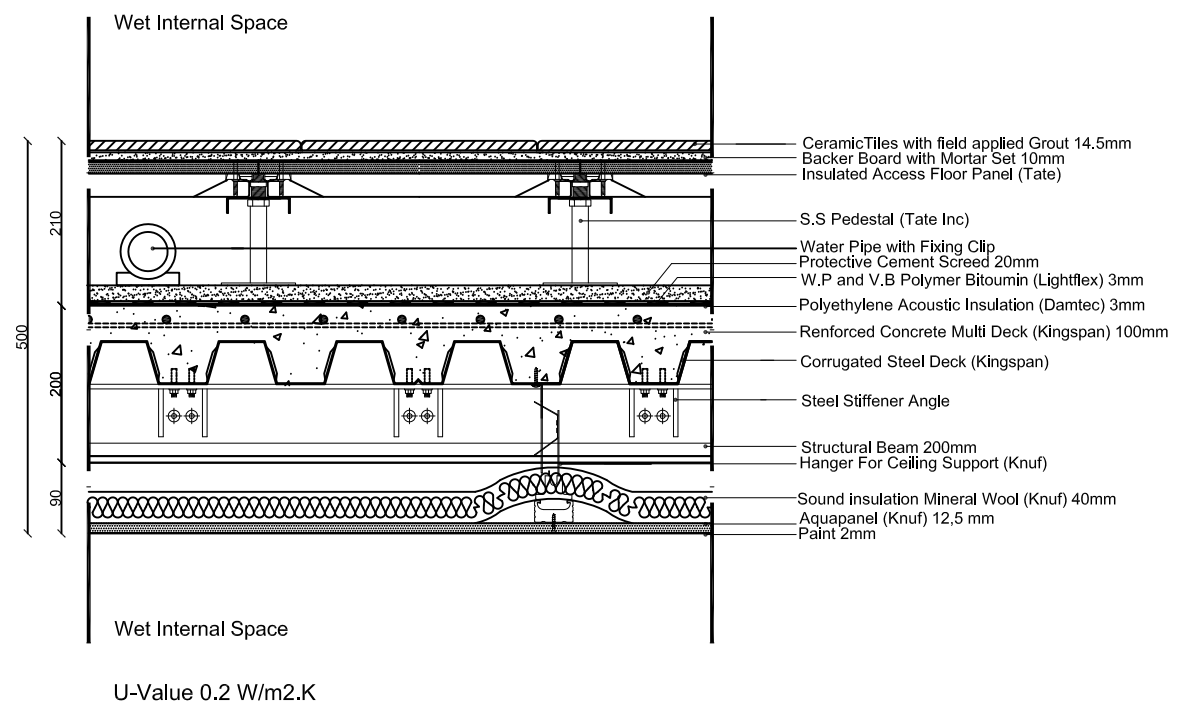
U-Value 0.2 W/m2.K

FLOOR

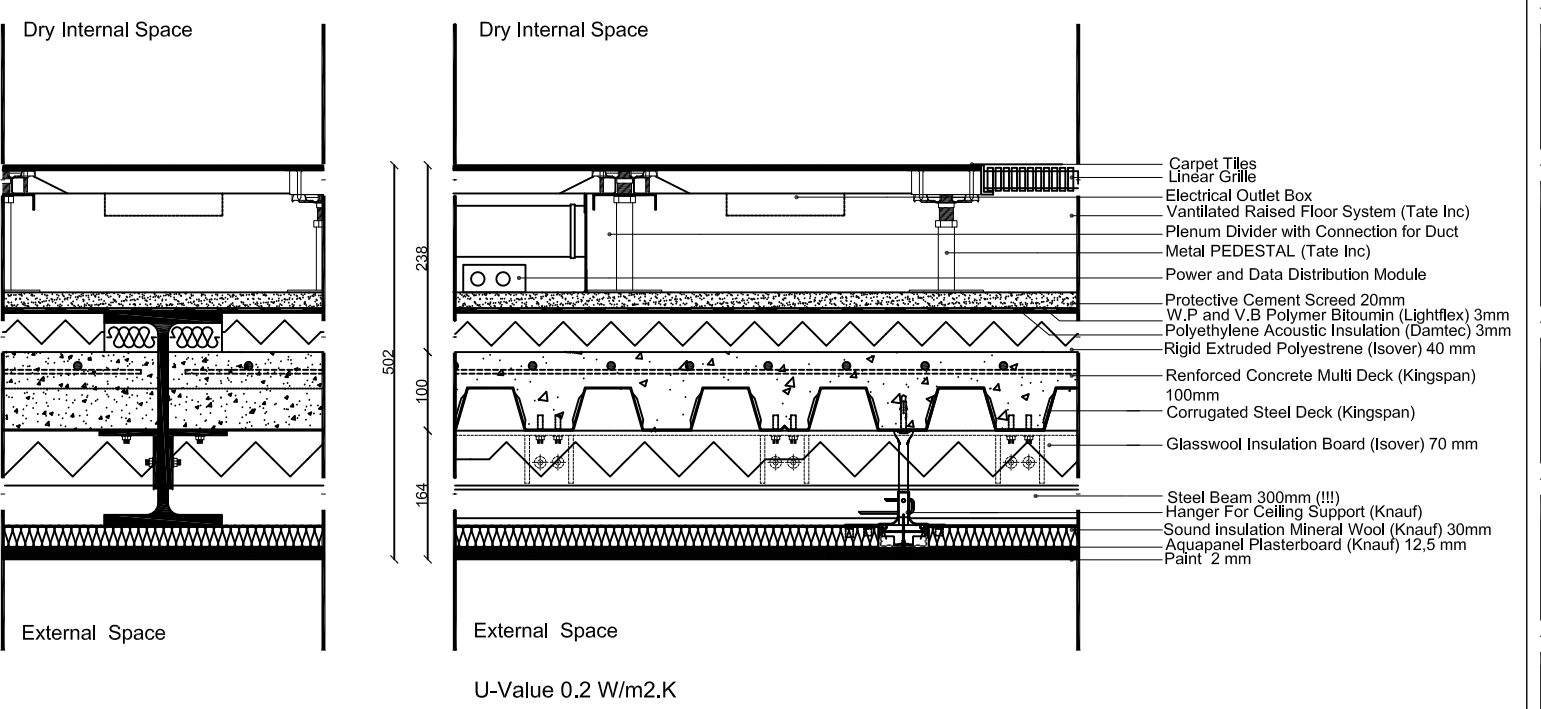
F01-01 Office raised floor



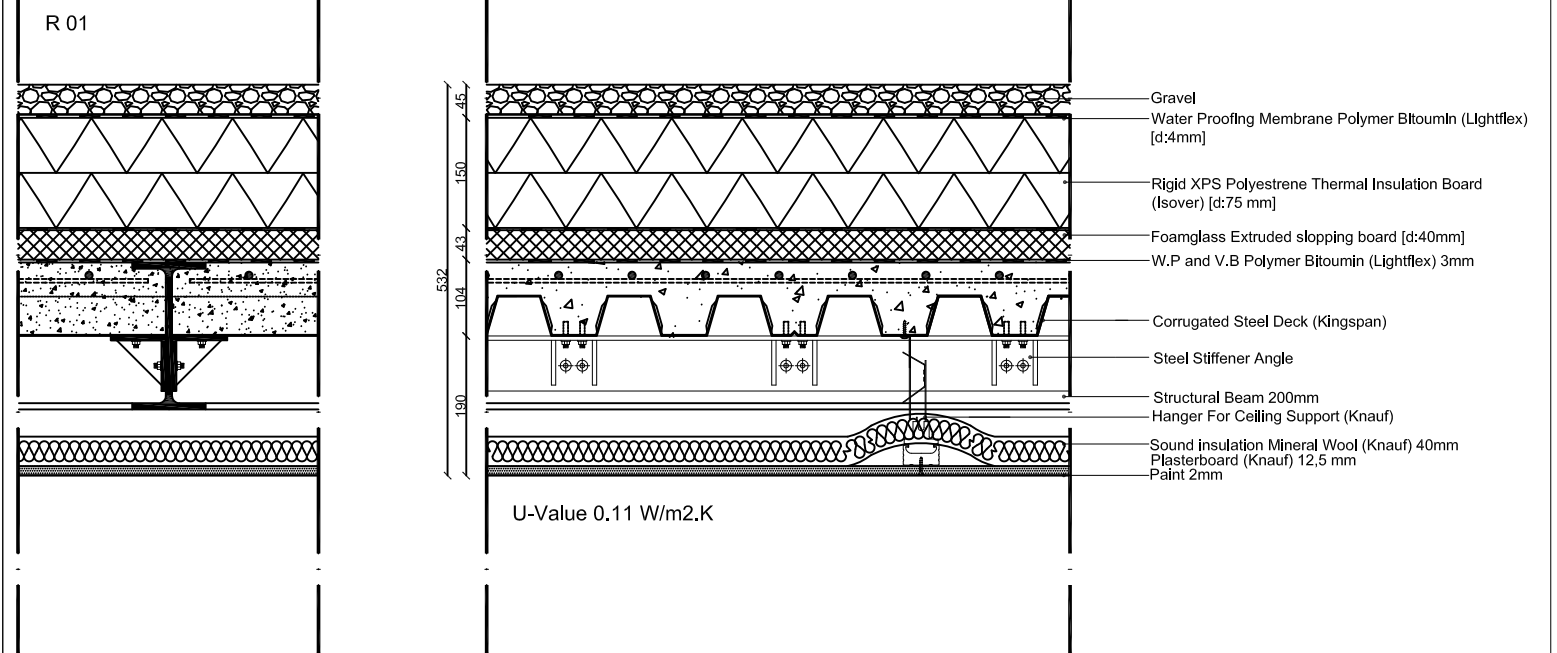
F01-02 Wet area

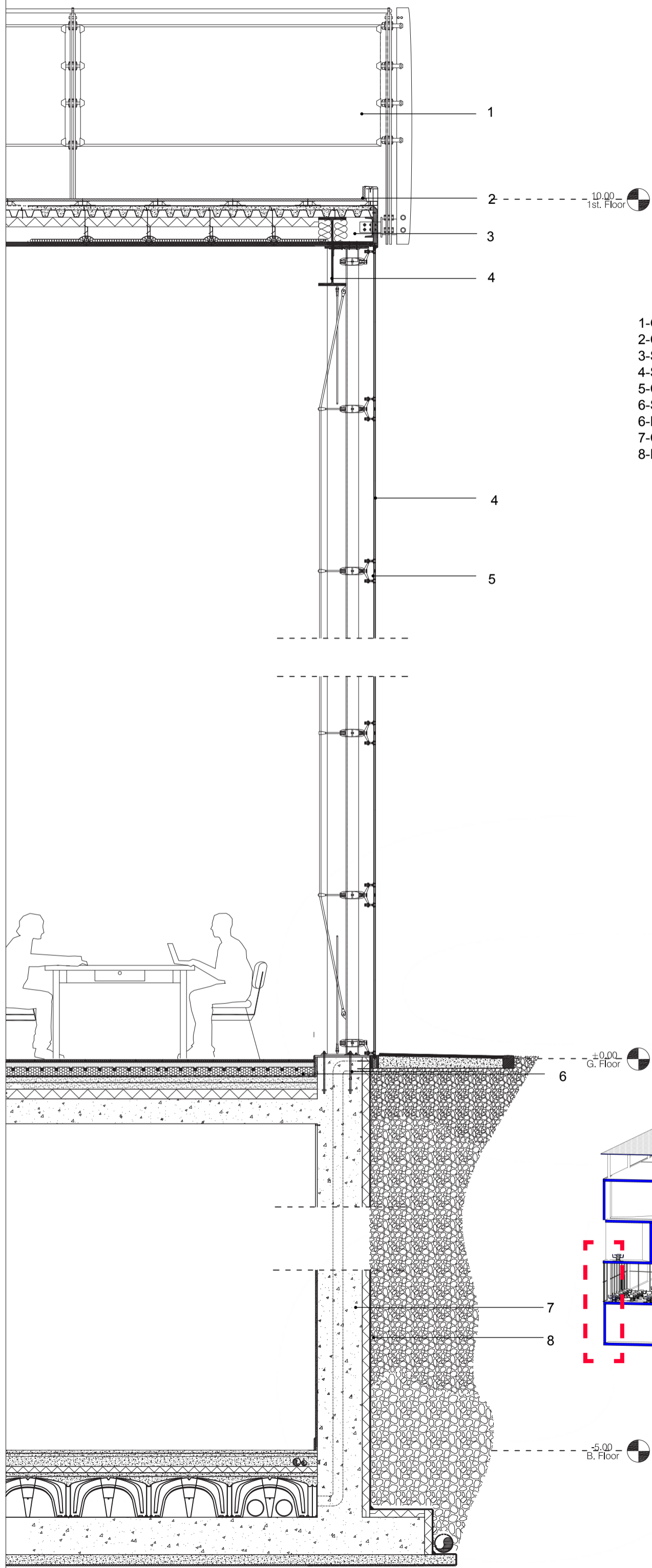


F01-03 Edge floor



ROOF

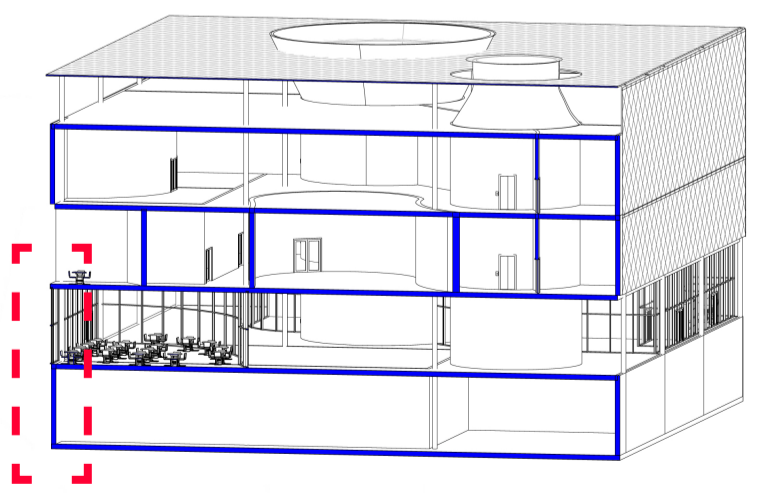


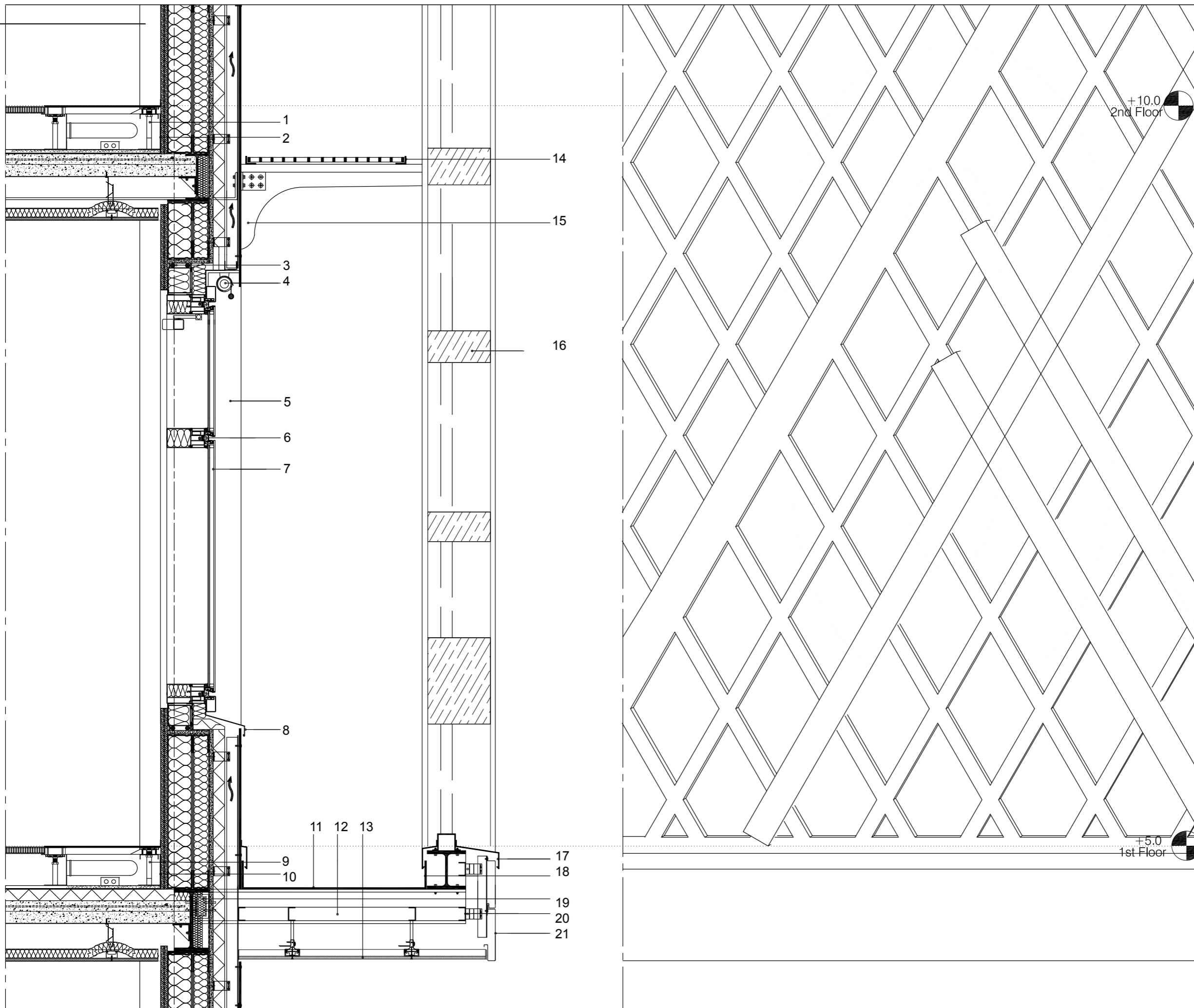


- 1-Glass Panel
- 2-Ceramic Tiles
- 3-Steel I-Beam 300mm
- 4-Steel I-Beam 550mm
- 5-Curtain wall
- 6-S.S.G Curtain wall Mullion (schuco)
- 6-Polyethylene Floor Heating Panel
- 7-Concret Retaining wall
- 8-Expanded Polystyrene Insulation

±0.00
G. Floor

-5.00
B. Floor





- 1-Ventilated Raised Floor system (Tate)
- 2-Polyethylene Acoustic Insulation (Damtec)
- 3-Sealant and backer rod
- 4-Automated Sun Blinds
- 5-Automated Operable Clear Glazed panel with Sensor and Timer Connected to BMS
- 6-S.S.G Insulated Curtain wall Mullion (schuco)
- 7-Ceramic Fritted (Dotes) Double Glazing with Low E Coating (Saint Gobain)
- 8-Aluminum Flashing
- 9-Ventilated Raised Floor system (Tate)
- 10-Polyethylene Acoustic Insulation (Damtec)
- 11- G.Steel Checker-plate
- 12-Steel I-Beam
- 13-Aquapanel Plasterboard (Knauf)
- 14-Steel Grid
- 15-Metal Bracket
- 16-Wood
- 17-Aluminum Flashing
- 18-G.Steel Checker-plate
- 19-IsoKorb Thermal Break (schoeck)
- 20-Supporting S.Steel chassis
- 21-Zinc Metal Cladding (Vmzinc)

