

- LEGENDA**
- PERCORSI**  
urbano ●●●●●  
extraurbano ○○○○○  
fiumi e canali ■■■■■  
ferrovia ———
- REFERIMENTI**  
primari ○  
secondari ○  
coni ottici AAAAA
- MARGINI**  
QUARTIERI ■■■■■  
industriali ■■■■■  
NODI  
piazze □  
stradali ○

foto\_1



foto\_2



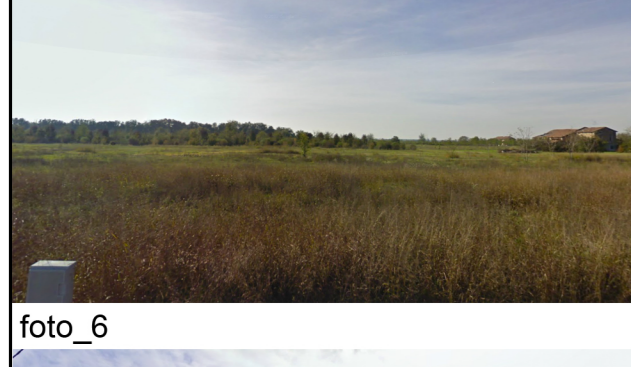
foto\_3



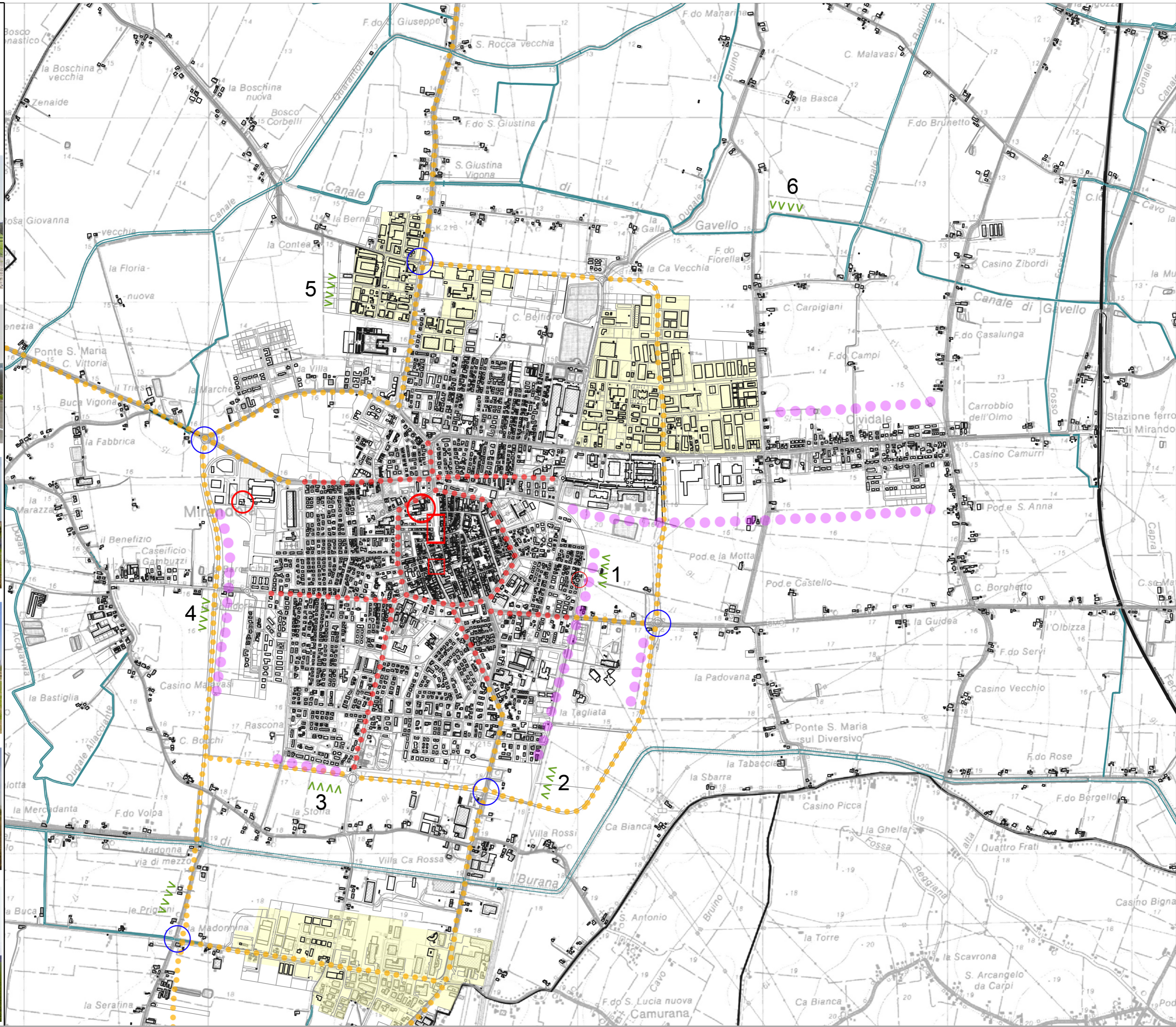
foto\_4



foto\_5

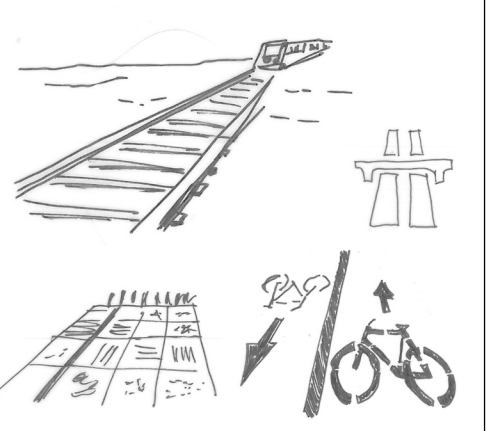


foto\_6

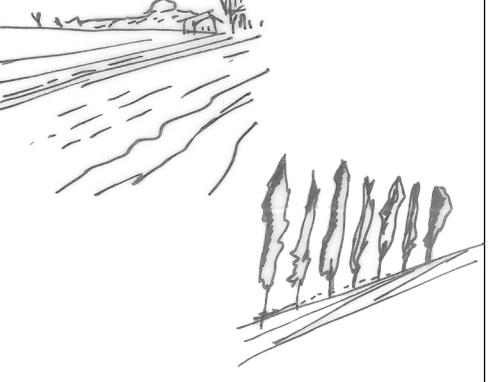


- LETTURA DEL PAESAGGIO**
- PATH ———  
EDGE ———  
DISTRICT ———  
NODE ———  
LANDMARK ———  
Kevin Lynch's - Image of the city

- PERCORSI**  
Ferrovia - Ciclabili - Strade - Tratti di campagna



- BORDI**  
Canali - Filari - Muri - Tangenziali



- DISTRETTI**  
Quartieri - Zone industriali - Centro storico



- NODI**  
Piazze - Incroci



- REFERIMENTI**  
Castello - Acquadotti - Duomo - Centro sportivo

