



Politecnico di Milano

Facoltà di Architettura e Società

Laurea Magistrale in Architettura

A.A. 2012 - 2013

Museo Archeologico nell'Area di Yenikapı a İstanbul

COLLEZIONE MUSEALE

Tesi di Laurea di

Nil Bıcak 755161

Relatore

Prof. Pier Federico Calıari

Correlatori

Prof. Francesco Leoni

Arch. Alessia Chiapperino

Arch. Paolo Conforti

Arch. Samuele Ossola

Arch. Sara Ghirardini

CONTENTS

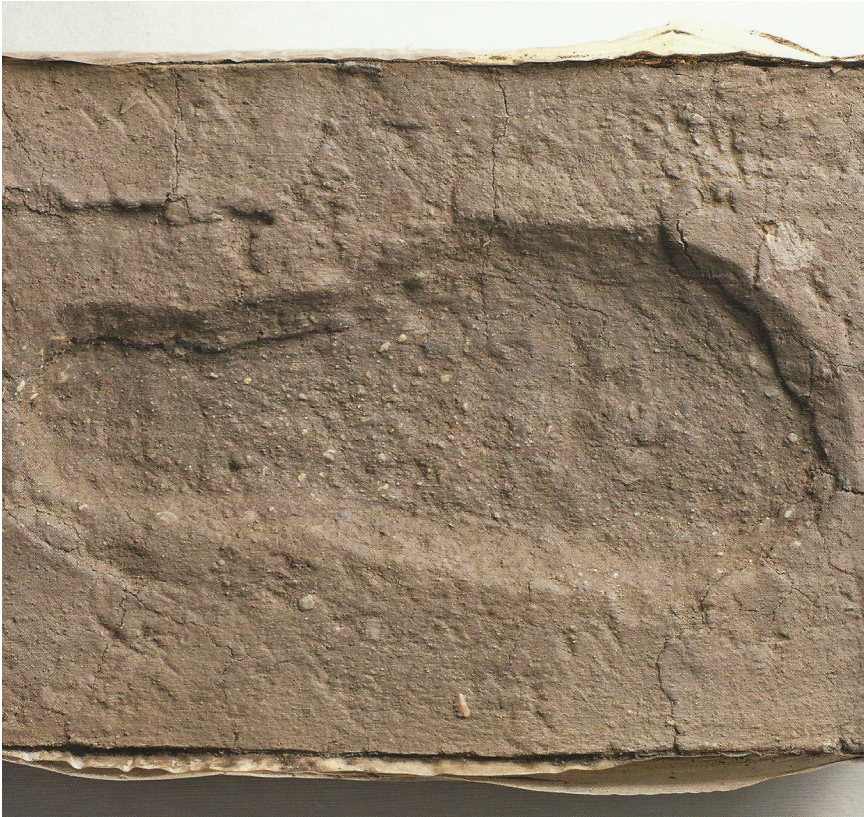
- NEOLITHIC PERIOD
- GREEK - ROMAN PERIOD
- BYZANTINE PERIOD
- OTTOMAN PERIOD
- THE GOLD COIN HOARD OF YENİKAPI



NEOLITHIC PERIOD

FOOTPRINTS

Footprints are located within the borders of the Neolithic Period settlement about 8 m below the sea level, in a context featuring a burial area, living areas, and tree roots. The depressions from the feet of people walking on the wet clayey ground were filled rapidly with sand, and the prints were all preserved. As the properties of the ground in the area of the footprints remained unchanged, the prints survived to the present. More than two thousand footprints were documented and removed from the area. The smallest footprint measures 15,9 cm from the toe tip to the heel, and the largest footprint measures 28,9cm. The footprints were identified in three superimposed levels, which altogether measure about 45 cm in depth.



SLING BULLET

6500-6000 B.C.

Baked Clay

L: 4.9 cm; W: 2.7 cm; D: 2.7 cm

YKM 12. 15643

Brick-red fabric with inclusions. Both ends are pointed and the middle is ovoid.



OBJECT

6500-6000 B.C.

Baked Clay

L: 8.3 cm; D: 4.5 cm

YKM 12. 15650

Clay shaped in thick, circular form and fired. Greenish and in placed black, due to structural properties and firing.



SPOON

6500-6000 B.C.

Bone

L: 20.2 cm; W: 2.9 cm; D: 2.3 cm

YKM 12.15624

Consists of a long handle narrow down towards the bowl, and a wide, flat, rectangular bowl with rounded corners. A small protrusion with a hooked tip and decoration in the form of “+” on the lower surface connects to the wide end of the handle. There is a circular depression on the upper surface.



Neolithic Period

LEG OF A FIGURINE

6500-6000 B.C.

Bone

L: 4.1 cm; W: 2.4 cm; D: 1 cm

YKM 10.12259

Surface shiny due to burnishing.
Fragment belonging to the left
leg of a figurine.



WHETSTONE

6500-6000 B.C.

Stone

L: 4.1 cm; W: 2.4 cm; D: 1 cm

YKM 12.15676

Thick rectangular form. The
edges are smoothed, with deep
shallow grooves for honing on
either edge.



BOX SHAPED VESSEL

6500-6000 B.C.

Baked Clay

H: 7.2 cm; W: 11.4 cm;

YKM 12.15653

Beige surface has blackened patches due to burning or firing; black fabric with common grit inclusions. Plain rim, Flat base, shape close to rectangular; one of the preserved side surfaces has incised checkerboard decoration, and another surface has geometric decoration.



BOWL

6200-6000 B.C.

Baked Clay

L: 8.7 cm; W: 9.4 cm; D: 0.7 cm

YKM 12.15855

Sand inclusions, beige fabric. Surface mostly beige, although there are brick-red patches due to burning. the rim is plain; the vessel widens slightly in a round base. Burial good from burial number.



BOWL

6200-6000 B.C.

Baked Clay

L:7.6cm; rim dia: 11.4 cm;

body dia: 13,8 cm

YKM 12.15651

Beige fabric with color varying in places. Grit inclusions. Plain rim is not symmetrical. The rim widens slightly towards the body and meets the carinated body. Four lug handles area regularly spaced along the sharp carination. Round base. Burial good from burial number. 2 found in Metro excavations.



Neolithic Period

BOWL

6000 B.C.

Baked Clay

H: 5.2 cm; rim dia: 8.3 cm;

Base dia: 7.3 cm

YKM 10.12261

Grey fabric with grit inclusions.



BOWL

6000 B.C.

Baked Clay

H: 5.0 cm; rim dia: 7.7 cm;

base dia: 7.2 cm

YKM 12.12260

Grey fabric with grit inclusions.
Plain rim, body narrows down
slightly towards the base.



Neolithic Period

NECKLACE BEADS

6000 - 5600B.C.

Stone / Shell

dia: 0.4 cm to 0.8 cm;

YKM 10.12264

38 preserved beads, half of one which is broken. Found scattered in cramation area.



JAR

6000 - 5600 B.C.

Baked Clay

rim dia: 9.6 cm;

body dia: 17.7 cm;

H: 14.2 cm

11.636 (ÇÇ)

Grey fabric with grit sand inclusions.



BLADE CORE

Flint

L: 2.7 cm; W: 1.9 cm; D:1.3 cm

YKM 12.15738

Black, small, thick, prismatic, and with single striking platform. Many narrow, long, mostly unbroken microlithic blades were extracted from the core surface.



DOUBLE SCRAPER

Flint

L: 5.6 cm; W: 2.5 cm; D:1 cm

YKM 12.15746

Brownish, flat and close to a rectangle in form. Both scraping edges are steep retouched and slightly rounded. Notches along both edges.



BOWL

Baked Clay

H: 4.4 cm; body dia: 8.3cm

11.716 (ÇÇ)

Dark buff fabric with sand inclusions; buff slip and burnished on the interior and exterior. Hadmade. Short, cylindrical body is carinated and connected to the flat base. Single horizontal handle on the body. The motifs are filled with white fill.



Neolithic Period

BLADE

Flint

L: 4.4 cm; W: 1.2 cm; D:0.4 cm

YKM 12.15736

Flat, shape close tu rectangle.

BLADE

Flint

L: 8.6 cm; W: 1.4 cm; D:0.5 cm

YKM 12.15750

Whitish, flat, long and rectangular form.

BLADE

Flint

L: 8.2 cm; W: 1.9 cm; D:0.7 cm

YKM 12.15748

Brownish, flat long and close to a rectangle in form.



An aerial photograph of an archaeological site, likely a beach or coastal area, showing a grid of excavation units. The terrain is sandy and covered with numerous small, dark, irregular objects, possibly pottery or other artifacts. A prominent orange horizontal line is drawn across the lower portion of the image, serving as a visual separator for the text below. The text "GREEK - ROMAN PERIOD" is written in white, uppercase letters, centered horizontally and positioned just above the orange line. The overall scene is brightly lit, suggesting a sunny day, with shadows cast by the objects and the grid lines.

GREEK - ROMAN PERIOD

ARYBALLOS

Greek, 575-550 B.C.

Baked Clay

H: 6.7 cm; body dia: 7.4 cm

11.366 (ÇÇ)

Aryballos with light buff clay, from Corinth. Neck and rim missing and type unknown. Globular body with round base. Brown painted water drop decoration on neck. Depiction of two palmattes details emphasized with incision. Beyond the palmattes a black and red rosette, hatched with diagonal incision.



OINOCHLE

Greek, 6th century B.C.

Baked Clay

H: 22.5 cm; rim dia: 9.1 cm;

W: 16 cm

07.21 (ÇÇ)

Beige slip over light-brick red fabric; trefoil rim. Short cylindrical neck; swollen body that narrows down towards the base. Vertical handle with oval cross-section from the rim to the shoulder. Decoration in the form of wide and narrow horizontal bands in black on the rim, neck, and body. Rosettes made up of black dots on the shoulder.



OINOCHLE

Greek, 6th century B.C.

Baked Clay

H: 27.1 cm; body dia: 17.9 cm

11.145 (ÇÇ)

Light brick-lead clay with trefoil rim. Cylindrical neck, swollen body that narrows down towards the base, and ring base. Handle with oval cross-section from rim to shoulder. Thick and narrow bands in brown as decoration on rim, neck and clay. Rosettes made of brown dots on shoulder.



ARYBALLOS

Greek, 575-550 BC

Baked Clay

H: 5.2 cm; rim dia: 3.1 cm;
W:4.6 cm

07.17 (ÇÇ)

Light buff fabric; flattened wide rim tray. Cylindrical, narrow and short neck; spherical body, round base.



ARYBALLOS

Greek, 575-550 BC

Baked Clay

H: 7.7 cm; body dia: 7.4 cm

11.142 (ÇÇ)

Aryballos with buff clay; flat and everted narrow rim; thin, short, cylindrical neck; globular body and round base; from Corinth.



PLATE

Greek, 5th - 4th centuries B.C.

Baked Clay

H: 2.5; rim dia: 14.4 cm

12.368 (ÇÇ)

Light brick-red clay, surface completely covered with black varnish. Slightly inverted, rolled rim. Shallow body with ring base. A circle in the center and palmettes around it inside tondo. Roulette decoration surrounding palmettes.



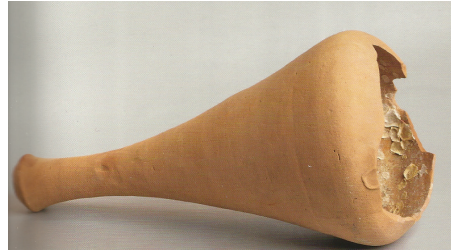
AMPHORA

Baked Clay

H: 53.2 cm; body dia: 24.5 cm

YKM 09.10325

Amphora with brick-red clay from Thasos; broken neck and rim.



AMPHORA

Baked Clay

H: 69.5 cm; body dia: 34.3 cm

YKM 10.11388

Amphora from Chios with brick-red clay.



AMPHORA

Baked Clay

H: 92,5 cm; rim dia: 11 cm

MRY 08.9500

Amphora with brick-red clay and beige slip from Chios.





KHANTAROS

Baked Clay

H: 8.1 cm; rim dia: 8.4 cm

11.252 (ÇÇ)

Brick-red clay, completely covered in black varnish. Everted cascading rim.



KHANTAROS

Baked Clay

H: 16.2 cm; body dia: 10.4 cm

YKM 11.14638

Light brick-red clay, covered with brownish gray-black varnish.



KHANTAROS

Baked Clay

H: 6,6 cm; body dia: 9.2 cm

YKM 08. 8889

Broken above the shoulder. Covered with black varnish.

BOWL

Greek, 5th century B.C.

Baked Clay

H: 5 cm; rim dia: 15.6 cm;

11.451 (ÇÇ)

Light brick-red clay, completely covered with black varnish. Slightly everted rim, shallow rounded body, ring based. Impressed palmette decorations and roulette in tondo.



HEAD OF STATUE


Roman, 2nd century A.D.

Marble

H: 20 cm; W: 15.5 cm

Head of statue of young woman. Head slightly turned to the right. The eyes are large, the eye sockets are not too deep, and inner corners of the eyes are distinct. Irises are made by drill. Cheekbones are prominent. The hair is depicted in thick, slightly wavy locks. Hair surrounds the head with a diadem decorated with leaves.



An aerial, grayscale photograph of ancient ruins, likely a Byzantine site. The image shows several large, rectangular structures with thick walls and some arched openings. The ruins are set against a light, sandy background. A prominent feature is a large, semi-circular structure in the upper left. The overall scene is one of archaeological excavation.

BYZANTINE PERIOD

HEAD OF A STATUE

Late Roman, Early Byzantine

Marble

H: 25 cm; W: 23.6 cm;

Figure of a man with a squarish, wide face and with short hair coming down to the forehead in curls. A wide nose, detailed pupils and eyelids. Fine incised lines give the impression of a recently grown beard.



Byzantine Period

MEDALLION

11th - 12th centuries

Lead

dia: 4.2 cm

Circular medallion with a suspension hole on its upper part. On one face is a man on a horse holding a spear and stylized animal is under the feet of the horse.



RING

11th - 12th centuries

Lead

Dia: 4.1cm

Circular form. There is a chain loop on the upper part. On one face at the center is the figure of a man on horseback, holding a spear in his left hand.



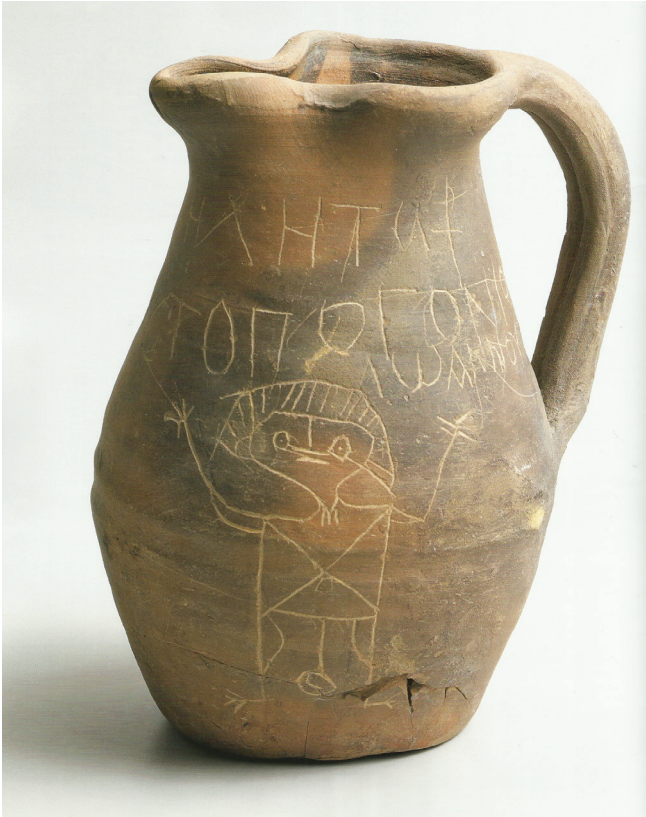
JUG

6th century

Baked Clay

H: 17.5 cm; body dia: 10.7 cm

Buff fabric, light brick-red and buff mottled slip. Trefoil mouth conical neck that widens towards the shoulder, oval body and flay base. Single handle with oval section from the rim to the body. Three grooves on the body. Has incised graffiti from the neck down and along the body.



Byzantine Period

LAMP

4th - 5th centuries

Baked Clay

H: 4.4 cm; dia: 3.9cm

Buff fabric, light brick-red slip. Round and oblate body, flat base.



LAMP

5th century

H: 3.4cm; dia: 4 cm

Buff fabric and slip. The nozzle part is broken and has burn marks. Oblate body, flat base.



LAMP

5th - 6th centuries

Baked Clay

H: 4.2 cm; L: 12 cm; W: 6.7 cm

Buff fabric. Round base, low oval body, long nozzle, lug handle.



Byzantine Period



LAMP

4th century

Baked Clay

H: 3.8 cm; dia: 4.2 cm

Buff fabric, the nozzle incomplete. Burn marks on the nozzle part. Oblate body, flat base. Double pouring holes and the figure of a man carrying a basket of grapes on the discus.



LAMP

4th - 5th centuries

Baked Clay

H: 4cm; dia: 3.9 cm

Buff fabric. The nozzle part is broken and has burn marks. Swollen shoulder, oblate body that narrows down towards the flat base. Figure riding an animal depicted in profile and in relief.

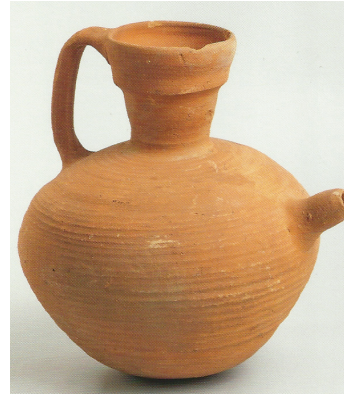
JUG

Early Byzantine

Baked Clay

H: 22.7 cm; rim dia: 7.6 cm;
body dia: 20.4 cm

Red fabric. Plain rim; short, conical neck; swollen, body with fine grooves; vertical handle from the rim to the body; ovoidal base.



JUG

Early Byzantine

Baked Clay

H: 18.1 cm; W: 12.2 cm

Dark red fabric. Plain rim; conical neck; swollen body with grooves; vertical handle from the neck to the body; concave disc base. Has spout on the body, and a lid connecting to a ring shaped section on the handle.





BOAT SHAPED VESSEL

8th century

Baked Clay

H: 8.2 cm; L: 22.2 cm

Brick-red fabric; yellowish glaze on the whole surface. The vessel is shaped like a boat and has a flat base.



MUG WITH A MAN'S FACE

7th - 8th centuries

Baked Clay

H: 5,6 cm; W: 11.8cm

Grey fabric; exterior completely glazed. Spherical body; horizontal handle with a circular section. Face of a man in relief under the vessel. The face is round-face and with slanted eyes. The figure has a cap that extends over the nose in a triangular shape.



Byzantine Period

VESSEL

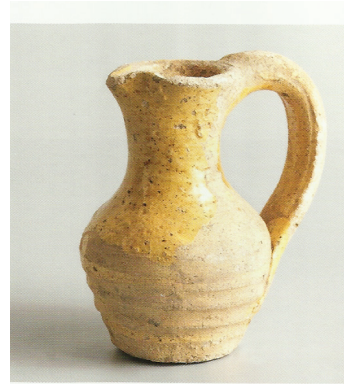
9th - 11th centuries

Baked Clay

H: 8.9 cm; rim dia: 3.7 cm;

body dia: 5.7 cm

White fabric, light yellow glaze.
Single handle from the rim to
the body. Flat base.



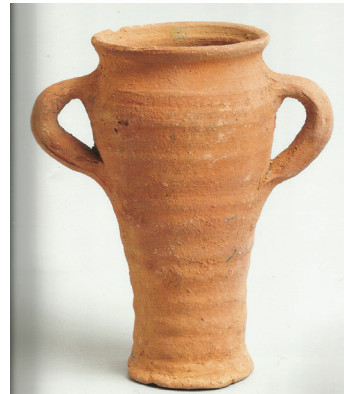
VESSEL

10th - 11th centuries

Baked Clay

H: 16.5 cm; rim dia: 8.5 cm

Red fabric. Everted rim;
cylindrical, grooved body
narrows down towards the
bottom; small, double handles
starting and ending on the body;
flat base.



AMPHORA

9th century

Baked Clay

H: 34 cm; W: 19 cm

YKM 07.4388

Brownish fabric. Cylindrical body that narrows down slightly towards the bottom. Graffiti in the form of a boat on the body.



TILE

11th - 12th centuries

Baked Clay

H: 7.8 cm; L: 4.6 cm;

11.237 (PT)

Brick-red fabric, same color slip. An elephant in relief on the front face.



HEAD OF A STATUE

Early Byzantine

Marble

H: 13.5 cm; W: 10.8 cm

Figure of a young man with his head slightly turned to the right. The hair comes down to the forehead in locks placed one on top of the other. The pupils and the eyelids are worked in detail; the face has a pathetic expression.



PLATE

11th centuries

Baked Clay

H: 5.2 cm; W: 16.8

White fabric, light yellow glaze. Simple rim; wide, low body; tallish foot. The rim surrounded by a fine groove with nine regular spaced, brown-glazed drop decoration.



PLATE

13th - 14th centuries

Baked Clay

H: 5 cm; W: 15.5 cm

Red fabric. Yellow, green and brown glaze. In the space bordered by a circle in tondo of the short piece is a fantastic figure with the face of a human and the body of a panther (?).



IVORY COMB

Early Byzantine

Ivory

H: 3.6 cm; W: 4 cm

Ivory comb with fine teeth on one end and thick teeth on the other; most of the teeth broken. In the middle section of the comb and on either side area decoration areas bordered by fine moldings. A roe deer crouching on the ground with its head turned back is depicted on one face of the decoration areas; on the other is a griffin.



SCALES BOX

6th - 8th centuries

Wood - Bronze

L: 20.4 cm; W: 8.4 cm;

Rectangular wooden scales box. Has a sliding lid on the top. The lid has geometric decorations. Another lid beneath the sliding lid divides the interior into two horizontal sections. In one of the sections are three circular divisions for weights. In the other section are bronze scales placed in sub-divisions carved on the wooden plate.



RELIQUARY

7th - 8th centuries

Ivory

W: 7.1 cm; L: 9.8 cm

Rectangular reliquary with flat bottom surface. On the inside is a small box with a cross in the middle and four small boxes around it in rectangular sections. On the lid of a reliquary are reliefs. A saint depicted frontally in front of an arcade and with a halo above his head holds a cross in one hand and blesses another figure with other hand. This other figure is a man, slightly bent forward, shown in profile.



BOWL

6th - 7th centuries

Glass

rim dia: 14.1 cm; H: 3,9 cm

Light green, transparent glass fabric. Air bubbles in fabric. Inverted plain rim, deep body, round base. On the interior at the center is a human figure with the body shown frontally and the face in profile. The figure is clothed, and wears a hat. The hands are extended on either side and on either side of the figure is a cross with crosshatched lines on it. Letters A and W between the figure and the crosses.



FIBULA

5th - 6th centuries

Gold

L: 5.9 cm; W: 2 cm

Crossbow-shaped. The foot is hexagonal in section. The middle bow is shaped by five sharp lines. The bow and the foot must hollow.



Byzantine Period

RING

5th centuries

Gold

H: 2.7 cm; dia: 2.5 cm; 7.33 g

Hoop round in section. Oval gold mounting. On the carnelian setting is an incised figure of pan (?).



RING

16th century

Gold

Dia: 2.7 cm

Oval setting on hoop with circular section; balls on four sides of the setting. The inside of setting is covered with stone with an eagle figure on the top.



Byzantine Period

JEWELLERY WITH MEDALLION

7th - 8th centuries

Gold

Medallion dia: 2.8 cm;

L of chain: 23,6 cm

Oval shaped medallion depicts the Annunciation. A golden ring, fixed to the medallion on four sides with 7 lapis lazuli beads, surrounds the medallion. On the upper part, two interlocking rings and the golden chain that is attached to the medallion join each other by two circular clasps.





OTTOMAN PERIOD



BOWL

14th - 15th century

Baked Clay, Glazed

Rim dia: 15.8 cm; H: 7.6 cm

Buff fabric, light green, brown and lemon yellow drip glazed. Round, plain rim; deep spherical body; ring base. The interior and exterior edges of the rim is light green glazed over thin white slip.



BOWL

16th century

Baked Clay, Glazed

Rim dia: 18.1 cm;

Base dia: 10.6 cm; H: 11 cm

Blue and white paint and trasparent slip over white fabric ad slip. Inturned rim, deep and spherical body narrows down.

PITCHER

16th century

Baked Clay, Glazed

Rim dia: 7.6 cm; b. dia: 13 cm;
base dia: 8 cm; H: 18.2 cm

Color slip and transparent glaze over white fabric and slip. Straight rim, cylindrical neck, swollen body, ring base. Handle from below the rim to shoulder.



VASE

16th century

Baked Clay, Glazed

rim dia: 6.6 cm, H: 12 cm

Turquoise blue and white paint over white fabric and slip; cobalt blue lines, transparent glaze. Straight rim, short cylindrical neck; distinct shoulder; body narrows down towards the base



MUG

16th century

Baked Clay, Glazed

body dia: 13 cm, base dia: 8 cm;

H: 18.6 cm

Cobalt blue paint and transparent glaze over white fabric and slip. Rim missing; cylindrical neck; spherical body; ring foot. The protrusion of a single handle visible on the shoulder. On background decorated with cobalt blue hatayis and rumis is a thuluth calligraphy band followed by borders consisting of wave motifs connected by meander and triangle rows on the neck. The body is decorated with large rumis, hatayis, curved branches and knots. On the lower part of the body, over braids and the foot, circular bands filled with S-shaped lines.



PLATE

16th - 17th centuries

Baked Clay, Glazed

rim dia: 25 cm; H: 4.8 cm

Blue paint and transparent glaze over white fabric and slip. Open, rounded rim, slightly deep body, ring base. Rosette with curved branches in pinwheel shape and stylized flowers at the center of the plate, and three rows of star-like motifs with six arms consisting of stylized plants. Two rows of lines and band with eyelets on the edge. A band of rings with dots surround the body. Band of stylized plant motifs on the rim. On the exterior of the body are six spiral rosettes with dots.





PIPE

18th - 19th century

Baked Clay

Rim dia: 3.5 cm; H: 3.8 cm

Red fabric and slip, burnished. The lip thickened on the exterior, decorated by small impressed star motifs placed on the tips of slices. On the stem and close to the lip are two incised lines and a stamp.



PIPE

18th - 19th centuries

Baked Clay

Rim dia: 3 cm; H: 4 cm

Red fabric and slip burnished. Cylindrical body; arched stem connects to the bowl by a triangular tip. Around the bowl is a wide band made with incised lines and filled with cream paint.

PIPE

19th century

Baked Clay

Rim dia: 1.7 cm; stem: 0.7 mm

White fabric with mica inclusions. European made. The pipe is bird-shaped, with incised decoration on the wings. Fine black line and relief decoration below the bird.



PIPE

18th - 19th centuries

Baked Clay

rim dia: 4.3 cm, H: 3.8 cm

Red fabric and slip. Wide flaring bowl rim, round lip. Band curved braces in between two rows of incised slanted lines on the lower body. The bottom of the bowl is wide and flat.





WATERPIPE BOWL

18th - 19th century

Baked Clay

Rim dia: 3.4cm; H: 4.3 cm

Red fabric burnished. Lip thickened on the exterior; flaring body; oblate swollen base. Pierced plate on the interior of the mouth.



PITCHER

19th century

Baked Clay

H: 23.2 cm; W: 11.2 cm

Light brick-red fabric, cream slip, drip glaze. The rim is missing. Pierced conical plate at the neck, which narrows down towards the body.

PLATE

18th - 19th centuries

Porcelain

rim dia: 19.3 cm; H: 3.6cm

White porcelain fabric. Wide everted rim, deep body and ring base. Blue line decoration on the rim and where the rim meets the body. A couple depicted at the center of the plate, with their names Josephine and Oscar written next to them. They are depicted frontally and down to the waist in ceremonial clothes and arm in arm.





THE GOLD COIN HOARD OF YENİKAPI

The Gold Coin Hoard of Yenikapı



The hoard was found during Yenikapı excavations in 2008, in Marmaray Area 1. The hoard consists 23 gold coins, 19 solidus and 4 tremisses, minted Constantinople. No containers or materials were found with the hoard, which was identified within the harbor fill. Black-grey mud accumulation was visible on the coins before their cleaning through conservation work.

The 23 coin hoard consist of 1 solidus coin from Honorius period; 16 solidus and 1 tremissis coin from Theodosius II period; 1 solidus and 1 tremissis coin minted in the same name of empress Aelia Eudocia, wife of Theodosius II; and 1 solidus and 2 trimissis coins from Marcianus period.

The Gold Coin Hoard of Yenikapı

COIN, GOLD *SOLIDUS*

Late Roman, 457-475

Leo I. Period,

Thessalonica Mint.

Found during Marmaray excavations in 2008 lodged in hull fragment of wreck Yk 22.

Obverse: Frontal bust of the emperor with helmet and armor, holding a spear in his right hand behind his head, with shield with rider figure over left shoulder.

Reverse: Victoria standing, holding a long cross resting on the ground to the left, a star each on the right and on the left, THSOB in exergue.



HOARD _ 85 PIECES

A coin hoard in a bronze container was found during the excavations, within the harbor fill that yielded finds dating to 5th - 7th centuries AD, in grid square M/34 at -4.60 m elevation. 85 coins and 1 bronze commercial weight were in heavily corroded and deformed container.



The Gold Coin Hoard of Yenikapı

TREASURE CONTAINER

6th century

H: 16.1 cm; W: 14.6 cm

Upper body and rim broken off and missing, deformed; flat, oval flask like form. The coin hoard was kept in this container. Conservation work resulted in the extraction and conservation of 85 bronze coins.



BRONZE WEIGHT

Byzantine 527-565, Justinian I.

dia.: 2.8 cm; H: 0.7 cm; 26 gr

Discus-shaped; convex prifile with two grooves. An indented point at the center of the top and bottom faces. n top face is an incised decorated circular border around a cross and the symbols, indicatinh that it weights one *uncia*.



