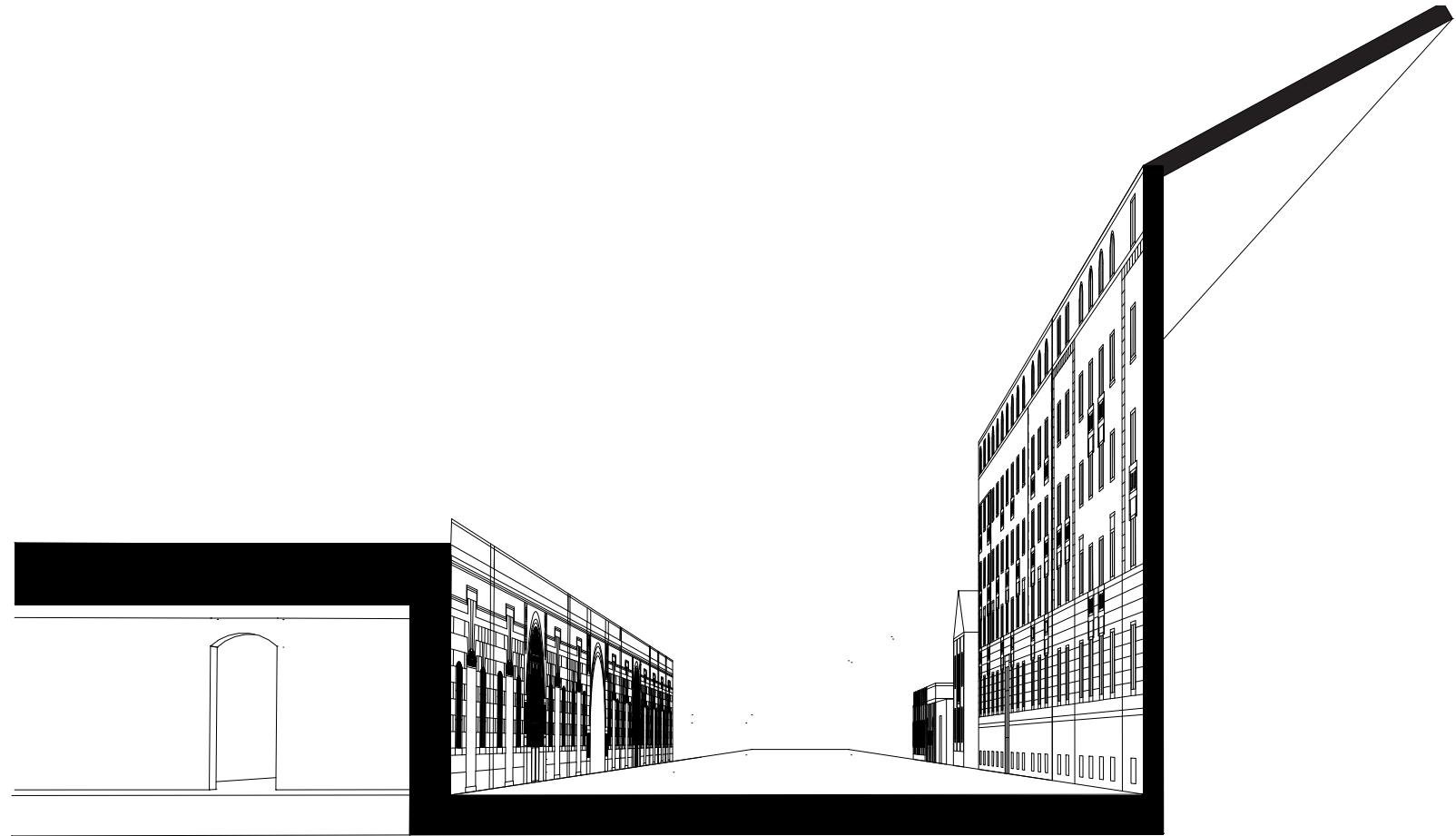
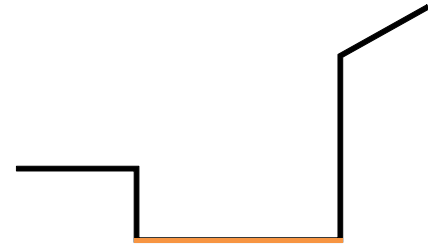


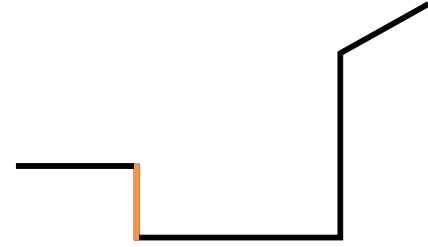
# TIPOLOGIA



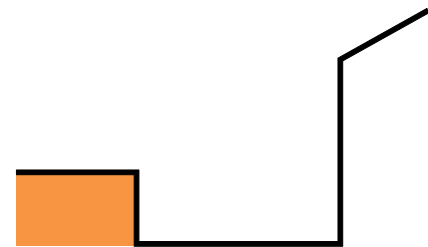
## STRADA



## FACCIATA



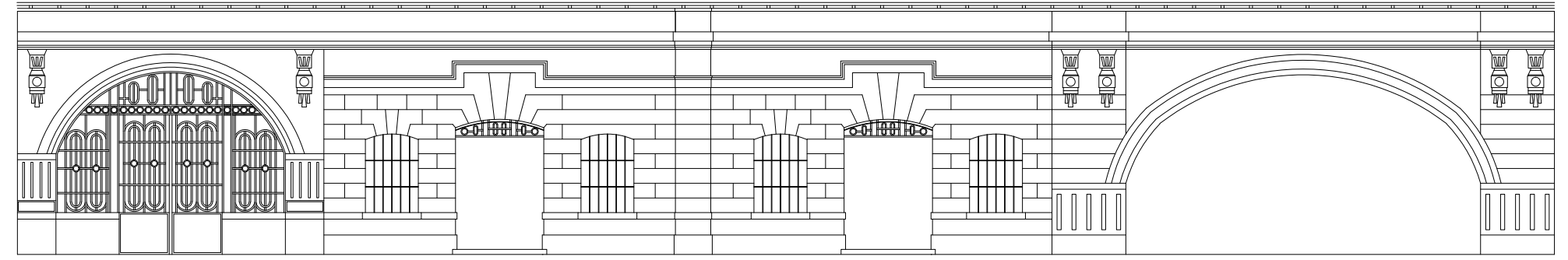
## MAGAZZINO



Piazza



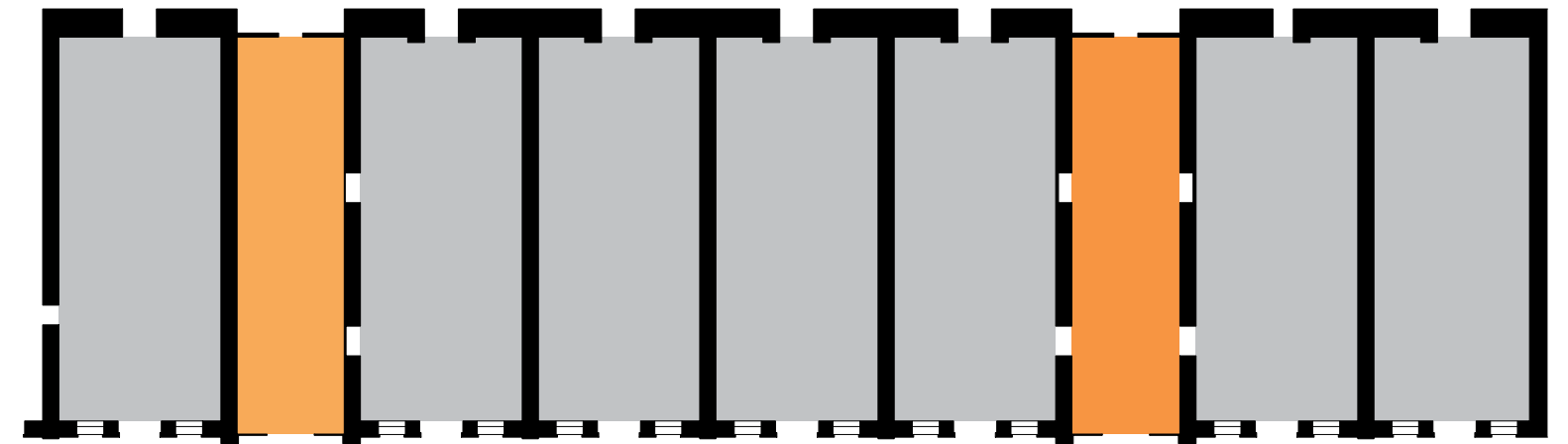
Strada



Tipologia 1 - 1 apertura

Tipologia 2 - 3 aperture

Tipologia 3 - tunnel carrabile



Tipologia A - 336 mq - 12x28 m

Tipologia B - 224 mq - 8x28 m